

**2025-26 PRESEASON SCHEDULE**

DATE	OPPONENT	SCORE	RECORD
5/6	vs. Sparks	82-83	L 0-1
5/11	@ Mercury	84-79	W 1-1

**2025-26 REG. SEASON SCHEDULE**

DATE	OPPONENT	SCORE	RECORD
5/16	vs. Sparks	67-84	L 0-1
5/21	vs. Mystics	76-74	W 1-1
5/23	@ Sparks	82-73	W 2-1
5/27	@ Liberty	67-95	L 2-2
5/29	@ Liberty	77-82	L 2-3
6/1	vs. Lynx	75-86	L 2-4
6/5	@ Mercury	77-86	L 2-5
6/7	vs. Aces	95-68	W 3-5
6/9	@ Sparks	89-81*	W 4-5
6/14	vs. Storm	76-70	W 5-5
6/17	@ Wings	71-80	L 5-6
6/19	vs. Fever	88-77	W 6-6
6/22	vs. Sun	87-63	W 7-6
6/25	vs. Liberty	78-81	L 7-7
6/27	vs. Sky	83-78	W 8-7
6/29	vs. Storm	84-57	W 9-7
7/5	@ Lynx	71-82	L 9-8
7/7	@ Dream	81-90	L 9-9
7/9	@ Fever	80-61	W 10-9
7/12	@ Aces	102-10	L 10-10
7/14	vs. Mercury	77-78	L 10-11
7/16	@ Storm	58-67	L 10-12
7/25	vs. Wings	86-76	W 11-12
7/27	@ Sun	64-95	L 11-13
7/29	@ Dream	77-75	W 12-13
7/31	@ Mystics	68-67	W 13-13
8/1	@ Sky	73-66	W 14-13
8/3	@ Aces	77-101	L 14-14
8/6	vs. Aces	72-78	L 14-15
8/9	vs. Sparks	72-59	W 15-15
8/11	vs. Sun	74-57	W 16-15
8/13	@ Mystics	88-83	W 17-15
8/15	@ Sky	90-59	W 18-15
8/17	vs. Dream	63-79	L 18-16
8/19	vs. Mercury	91-98	L 18-17
8/22	@ Mercury	72-81	L 18-18
8/24	@ Wings	90-81	W 19-18
8/30	vs. Mystics	99-62	W 20-18
8/31	vs. Fever	75-63	W 21-18
9/2	vs. Liberty	66-58	W 22-18
9/4	vs. Wings	84-80	W 23-18
9/6	vs. Lynx	72-78	L 23-19
9/9	@ Storm	7:00 pm	KPIX+
9/11	@ Lynx	5:00 pm	KMAX/KPIX X

All Times Golden State Time (PT)  
\* Overtime Periods

**2025-26 REG. SEASON RECORD BY MONTH**

May: (2-3); Jun: (7-4); Jul: (4-6); Aug: (8-5); Sep: (2-1)

**GOLDEN STATE VALKYRIES (23-19) @ SEATTLE STORM (22-21)**

Tuesday, September 9th, 2025 — Climate Pledge Arena —  
7:00 pm PDT — Regular Season Game #43 — Away Game #21



TV: KPYX (Kevin Danna and Morgan Ragan)  
Radio: 95.7 The Game, The Audacy App (Deuce Mason and Sophia Jones)



Pregame Press Conferences  
Natalie Nakase: 5:00 p.m.  
Noelle Quinn: 5:15 p.m.

**LAST GAME'S STARTING V**

PLAYER / 2025-26 REGULAR SEASON AVERAGES	NOTES
--	-------

**#13 Janelle Salaün**

F • 6-2 • /France • Rookie

GP/GS	PPG	RPG	APG	SPG	BPG	MPG
34/31	11.2	4.9	1.2	0.6	0.1	26.7

Fourth among WNBA rookies with 11.2 PPG, third with 4.9 RPG, fifth with a 36.9 3FG%, the only rookie to rank in the top 5 in all three categories...Averaging 14.8 points, 5.4 boards, 45.3 FG% and 1.7 3FG% her last five games...21 double-digit games this season, including 13 of her last 16. Shooting 69.6 percent at the rim this season (16-23)...All 58 of her threes this season have been assisted on...Started for France in its silver medal run at the 2024 Paris Olympics.

**#12 Iliana Rupert**

F/C • 6-4 • /France • 3rd Season

GP/GS	PPG	RPG	APG	SPG	BPG	MPG
19/9	9.5	3.7	1.6	0.6	0.5	23.4

Leads the W with a 44.7 3FG%, and has hit three-or-more threes nine times this season... Shooting 40.7 percent (11-27) from three her last five games... GSV is 4-0 when she hits four or more threes in a game this season...Posting a 53.7 FG% in the third quarter this season, and shooting 53.6 percent from three in the fourth... Drafted 12th overall by Las Vegas in the 2021 WNBA Draft, winning the 2021 WNBA Championship with the Aces.

**#14 Temi Fágbenlé**

C • 6-4 • Harvard/United Kingdom • 4th Season

GP/GS	PPG	RPG	APG	SPG	BPG	MPG
37/36	7.2	4.9	1.6	0.8	0.5	23.2

Posting a 52.2 FG% in the first quarter, as well as a first-half FG% of 53.3 (72-135) this season... Shooting 64.4 percent (38-59) at the rim... Shot 50.0 percent or better in 21 games this season... Posting 7.3 points, 4.9 rebounds and 1.6 assists per game as a starter (36 games)...Averaging career highs in points, rebounds and assists this season... WNBA Champion in 2017 with Minnesota.

**#6 Kaila Charles**

G • 6-1 • Maryland/USA • 5th Season

GP/GS	PPG	RPG	APG	SPG	BPG	MPG
33/10	6.2	4.0	1.0	0.8	0.2	17.1

Averaging 7.1 points, and 4.1 rebounds with a 47.8 FG% as a Valkyrie... Six double-digit scoring performances this season with Golden State... 79.2 percent of her field goals this season have been assisted on (57/72 - for both DAL and GSV)... Posting a 45.0 FG% in the fourth quarter this season...Drafted 23rd overall in the 2020 WNBA Draft by Connecticut... Has appeared in over 80 WNBA games for CON, ATL, SEA, DAL and GSV in four seasons.

**#22 Veronica Burton**

G • 5-9 • Northwestern/United States • 3rd Season

GP/GS	PPG	RPG	APG	SPG	BPG	MPG
42/42	12.0	4.5	5.9	1.0	0.6	29.2

Is averaging over 8 points, 5 assists and 3 rebounds a game from a season ago, no other WNBA player in league history has had this season-to-season increase...Is the only player in the W leading their team in total points, rebounds and assists...Fourth in the W with 5.9 APG, and eighth in A/T/O with 2.78 (min 10 games)... On 8/19 became the first WNBA player ever to have 24 points, 14 assists and 0 turnovers in a game...Started all 36 games this year, only GSV player to do so... Four assist-point double-doubles this season... Is the only player in the league this season with three games of 10+ assists and 0 turnovers...Has reached the postseason in all four WNBA seasons (Dallas: 2022, 2023; Connecticut: 2024; Golden State: 2025)

**2025-26 REGULAR SEASON VALKYRIES RECORDS**

	RECORD	HOME	ROAD	OT
OVERALL	23-19	14-8	9-11	1-0
WESTERN	9-13	6-6	3-7	1-0
EASTERN	14-6	8-2	6-4	--
	23-19	14-8	9-11	1-0

**UPCOMING GAMES**

DATE	OPPONENT	TIME (PT)	TV
Thu, Sep. 11	at MIN	5:00 pm	KMAX/KPIX
--	--	--	--
--	--	--	--
--	--	--	--

STREAKS	OVERALL:	LOST 1	HOME:	LOST 1	ROAD:	WON 1
---------	----------	--------	-------	--------	-------	-------

**GAME STATUS REPORT**

Cecilia Zandalasini - QUESTIONABLE - Left calf  
Tiffany Hayes - OUT - Left knee  
Kayla Thornton - OUT - Right knee

**RECENT TRANSACTIONS**

September 8: Elizabeth Kitley was released  
September 3: Elizabeth Kitley signed a seven-day hardship contract  
September 1: Bree Hall was released  
August 27: Bree Hall signed a seven-day hardship contract  
August 22: Kaila Charles signed a rest-of-season contract  
August 15: Kaila Charles signed a third seven-day hardship contract  
August 8: Kaila Charles signed a second seven-day hardship contract  
August 1: Kaila Charles signed a seven-day hardship contract

**HISTORY MADE**

The Valkyries became the first-ever WNBA expansion team to clinch a postseason berth in their inaugural season with the 84-80 win over Dallas on September 4.

One more victory this season secures the No. 6 seed for Golden State in the playoffs.

NO.	PLAYER	POS.	HT.	BIRTHDATE	PRIOR TO WNBA/HOME COUNTRY	WNBA EXP.
3	Laeticia Amihere	F	6-3	07/10/2001	South Carolina/Canada	2
25	Monique Billings	F	6-4	05/02/1996	UCLA/United States	7
22	Veronica Burton	G	5-9	07/12/2000	Northwestern/United States	3
6	Kaila Charles	G/F	6-1	03/23/1998	Maryland/USA	5
2	Kaitlyn Chen	G	5-9	02/22/2002	Connecticut/United States	R
14	Temi Fágbenlé	C	6-4	09/08/1992	Harvard/United Kingdom	4
15	Tiffany Hayes	G	5-10	09/20/1989	UConn/United States	12
0	Carla Leite	G	5-9	04/16/2004	Tarbes (France)/France	R
20	Kate Martin	G	6-0	06/05/2000	Iowa/United States	1
12	Iliana Rupert	C	6-4	07/12/2001	/France	3
13	Janelle Salaün	F	6-2	09/05/2001	/France	R
5	Kayla Thornton	F	6-1	10/20/1992	Texas-El Paso/United States	9
24	Cecilia Zandalasini	F	6-2	03/16/1996	PF Schio (Italy)/Italy	3

## STAFF

Head Coach: Natalie Nakase (UCLA – '03)  
Assistant Coach: Kasib Powell (Texas Tech – '03)  
Assistant Coach: Ta'Shauna "Sugar" Rodgers (Georgetown – '13)  
Assistant Coach: Landon Tatum (Idaho – '12)  
Head Video Coordinator/Coach Development: Sidney Dobner (Ashford – '18)  
Director of Player Development: Sidney Parsons (Bridgeport – '10)  
Assistant Video Coordinator: Daisy Feder (UC San Diego – '13)

## PRONUNCIATION GUIDE

**Laeticia Amihere** (Luh-tee-see-uh ah-ME-hear); **Kaila Charles** (KY-luh); **Temi Fágbenlé** (TEM-ee fag-BEN-lay); **Carla Leite** (Late); **Iliana Rupert** (ill-e-AH-nuh roo-PAIR); **Janelle Salaün** (Juh-nell Sa-LON); **Cecilia Zandalasini** (Che-CHEE-lee-uh ZAN-dah-leh-see-nee)  
Natalie Nakase: nuh-KAH-say  
Kasib Powell: Kuh-sib

Audio pronunciations can be found here: [bit.ly/GSV2025](https://bit.ly/GSV2025)

## NUMERICAL ROSTER

0	Carla Leite	2	Kaitlyn Chen
3	Laeticia Amihere	5	Kayla Thornton
6	Kaila Charles	12	Iliana Rupert
13	Janelle Salaün	14	Temi Fágbenlé
15	Tiffany Hayes	20	Kate Martin
22	Veronica Burton	24	Cecilia Zandalasini
25	Monique Billings		

## RECENT TRANSACTIONS

September 8: Elizabeth Kitley was released  
September 3: Elizabeth Kitley signed a seven-day hardship contract  
September 1: Bree Hall was released  
August 27: Bree Hall signed a seven-day hardship contract  
August 22: Kaila Charles signed a rest-of-season contract  
August 15: Kaila Charles signed a third seven-day hardship contract  
August 8: Kaila Charles signed a second seven-day hardship contract  
August 1: Kaila Charles signed a seven-day hardship contract  
July 17: Iliana Rupert signed a Rest-of-Season Contract  
July 13: Stephanie Talbot was waived  
July 1: Julie Vanloo are waived  
June 30: Janelle Salaün and Cecilia Zandalasini are re-activated, Chloe Bibby and Bree Hall are waived  
June 25: Temi Fágbenlé is re-activated, Aerial Powers was waived  
June 18: Bree Hall signed a Rest-of-Season Contract  
June 15: Temi Fágbenlé is temporarily suspended; Chloe Bibby and Kaitlyn Chen signed Rest-Of-Season Contracts  
June 11: Janelle Salaün is temporarily suspended.  
June 10: Julie Vanloo is temporarily suspended; Aerial Powers signed a Rest-of-Season Contract.  
June 8: Cecilia Zandalasini is temporarily suspended; Laeticia Amihere signed a Rest-of-Season Contract; Kyara Linskens was waived.

### How the Valkyries Were Built

Free Agent: Laeticia Amihere, Kaila Charles; Kaitlyn Chen, Tiffany Hayes

Hardship: Elizabeth Kitley

Rookie Scale Contract: Janelle Salaün

Expansion Draft: Iliana Rupert (Atlanta Dream), Veronica Burton (Connecticut Sun), Carla Leite (Dallas Wings), Temi Fágbenlé (Indiana Fever), Kate Martin (Las Vegas Aces), Cecilia Zandalasini (Minnesota Lynx), Kayla Thornton (New York Liberty) and Monique Billings (Phoenix Mercury).

**WOMEN'S NATIONAL BASKETBALL ASSOCIATION**

**OFFICIAL SCORER'S REPORT  
FINAL BOX**

Saturday, September 6, 2025 Chase Center, San Francisco, CA  
 Officials: #42 Roy Gulbeyan, #9 Tim Greene, #38 Gina Cross

Game Duration: 1:52  
 Attendance: 18064 (Sellout)

**VISITOR: Minnesota Lynx (33-9)**

	POS	MIN	FG	FGA	3P	3PA	FT	FTA	OR	DR	TOT	A	PF	ST	TO	BS	+/-	PTS	
6 Bridget Carleton	F	26:44	1	5	1	4	1	2	2	2	4	2	1	1	0	0	1	4	
24 Napheesa Collier	F	36:11	6	16	4	8	4	4	0	5	5	2	3	1	1	1	5	20	
15 Jessica Shepard	C	37:38	6	9	0	0	0	0	4	9	13	3	2	2	1	1	7	12	
21 Kayla McBride	G	31:49	1	11	0	5	2	2	0	1	1	3	3	2	2	1	8	4	
10 Courtney Williams	G	33:22	6	16	1	3	1	1	0	8	8	5	1	0	3	0	7	14	
2 Natisha Hiedeman		28:05	6	10	6	10	6	7	0	1	1	2	5	3	2	1	2	24	
77 Maria Kliundikova		06:11	0	1	0	0	0	0	2	2	4	0	0	0	1	1	0	0	
7 Anastasiia Olairi Kosu		DNP - Coach's Decision																	
00 Jaylyn Sherrrod		DNP - Coach's Decision																	
20 Camryn Taylor		DNP - Coach's Decision																	
			200:00	26	68	12	30	14	16	8	28	36	17	15	9	10	5	6	78
				38.2%		40%		87.5%		TM REB: 7			TOT TO: 11 (14 PTS)						

**HOME: GOLDEN STATE VALKYRIES (23-19)**

	POS	MIN	FG	FGA	3P	3PA	FT	FTA	OR	DR	TOT	A	PF	ST	TO	BS	+/-	PTS	
13 Janelle Salaün	F	34:04	5	14	3	8	2	2	3	5	8	2	3	1	4	0	-7	15	
12 Iliana Rupert	F	33:39	4	10	3	9	4	4	1	5	6	2	0	2	0	0	-5	15	
14 Temi Fágbenlé	C	23:42	3	7	0	2	0	0	3	0	3	0	3	0	1	0	-2	6	
6 Kaila Charles	G	28:46	7	17	1	5	0	0	0	8	8	3	2	1	2	1	2	15	
22 Veronica Burton	G	32:27	5	10	1	3	3	6	1	5	6	6	3	0	4	0	2	14	
20 Kate Martin		20:24	1	6	0	5	0	0	1	5	6	2	0	0	1	0	-7	2	
25 Monique Billings		18:03	2	4	1	2	0	0	0	1	1	0	2	0	0	1	-4	5	
0 Carla Leite		08:55	0	2	0	1	0	0	0	0	0	1	0	0	0	0	-9	0	
3 Laeticia Amihere		DNP - Coach's Decision																	
2 Kaitlyn Chen		DNP - Coach's Decision																	
33 Elizabeth Kitley		DNP - Coach's Decision																	
			200:00	27	70	9	35	9	12	9	29	38	16	13	4	12	2	-6	72
				38.6%		25.7%		75%		TM REB: 9			TOT TO: 12 (19 PTS)						

SCORE BY PERIOD	1	2	3	4	FINAL
Lynx	16	15	30	17	78
VALKYRIES	18	18	16	20	72

Inactive: Lynx - Carrington (Injury/Illness - L. Shoulder), Smith (Rest)  
 Inactive: Valkyries - Hayes (Injury/Illness - L. Knee), Thornton (Injury/Illness - R. Knee), Zandalasini (Injury/Illness - L. Calf)  
 Points in the Paint: Lynx 14 (7/16), VALKYRIES 34 (17/28)  
 2nd Chance Points: Lynx 5 (2/9), VALKYRIES 10 (4/13)  
 Fast Break Points: Lynx 11 (4/8), VALKYRIES 4 (2/3)  
 Biggest Lead: Lynx 9, VALKYRIES 7  
 Lead Changes: 5  
 Times Tied: 6

Flagrant Fouls  
 Lynx (0): NONE  
 VALKYRIES (1): 1:52 3rd Burton-FLG1

## NOTES

### Storm Connections

- Laeticia Amihere and Storm guard Zia Cooke won the 2022 NCAA Championship with South Carolina. The duo played together for four seasons (2019-20 to 2022-23).
- Head coaches Natalie Nakase and Noelle Quinn both grew up in the Southern California area and were guards at UCLA, Nakase from 1998-2003 and Quinn from 2003-07. Nakase helped recruit Quinn to the Bruins.
- Seattle's Alysha Clark played for the Las Vegas Aces from 2023-2024 when Natalie Nakase was an assistant coach at the time. Clark and Nakase were both a part of the 2023 Aces Championship team.
- Storm center Dominique Malonga, and Golden State's Janelle Salaün and Carla Leite represented the French National Team in FIBA Eurobasket Qualifiers (2023-2025).
- Kaila Charles played in four games for the Storm in 2023.
- Golden State's Kaitlyn Chen (2025) and Tiffany Hayes (2008 & 2009), and Seattle's Katie Lou Samuelson (2016) and Gabby Williams (2015 & 2016), all won a national championship with UConn during their tenure with the program.

### Current Roster Breakdown

- International: 6 players from 4 different countries (Canada, France, Italy, United Kingdom)
- Rookies: 3 (Chen, Leite, Salaün)
- Players with the team in their third year or more: 8 (Amihere, Billings, Burton, Charles, Fágbenlé, Hayes, Rupert, Thornton). Of these seven players, five have appeared in 100 or more games in their W career (Billings, Burton, Fágbenlé, Hayes and Thornton)
- Seven Valkyries who are on the current roster have been drafted in the top 20, including three the top 10: Veronica Burton (#17 overall in 2022), Laeticia Amihere (#8 - 2023), Carla Leite (#9 - 2024), Iliana Rupert (#12 - 2022), Tiffany Hayes (#14 - 2012), Monique Billings (#15 - 2018), and Kate Martin (#18 - 2024).

### Championship Pedigree

- Valkyries players, coaches and executives bring a strong championship pedigree to the organization, which includes eight WNBA Championships, three Olympic medals, and four NCAA Championships across 10 different players, coaches and executives:
  - WNBA Championships: 8
    - Ohemaa Nyanin - New York Liberty in 2024
    - Natalie Nakase - Las Vegas Aces in 2023 and 2022
    - Sugar Rodgers - Minnesota Lynx in 2013
    - Kayla Thornton - New York Liberty in 2024
    - Iliana Rupert - Las Vegas Aces in 2022
    - Temi Fágbenlé - Minnesota Lynx in 2017
    - Cecilia Zandalasini - Minnesota Lynx in 2017
  - Olympic Medals: 3
    - Ohemaa Nyanin - Gold in 2018 and 2016 with Team USA
    - Janelle Salaün - Silver in 2024 with Team France
  - NCAA Championships: 4
    - Tiffany Hayes - 2009 and 2008 with Connecticut
    - Laeticia Amihere - 2022 with South Carolina
    - Kaitlyn Chen - 2025 with Connecticut

### Notes

- Golden State has the fourth-toughest remaining schedule in the W (.647 opp. winning percentage)- per Elias.
- Golden State went 7-4 (.636) during the month of June, including three wins by 24 points or more, and wrapped up the month winning four of their last five. Golden State averaged a 46.1 field goal percentage to go with 82.1 points, 47.5 rebounds and 18.7 assists per game, while holding opponents to 75.1 points per game. The Valkyries became the first WNBA team this season to have five players in double figures for three straight games (June 5 at PHX, June 7 vs. LVA, and June 9 at LAS). The team's +6.9 plus/minus in June was the second highest in the league. Kayla Thornton was named the Western Conference Player of the Week for week 4 (June 9-15), and Natalie Nakase was named the league's Coach of the Month.
- Golden State is the second-fastest expansion team to reach 15 wins on the year (30 games); the 1998 Detroit Shock - 27 contests). The Valkyries were the third fastest expansion team to reach 10 wins (19 games); 1999 Minnesota Lynx - 16 games; 1998 Detroit Shock - 19 games), and the fourth fastest expansion to reach five wins (10 games; 1999 Orlando Miracle - 8 games, 1998 Detroit Shock - 9 games, 1999 Minnesota Lynx - 9 games).
- Golden State won its 17th game of the year on 8/13, tying them with the 1998 Detroit Shock for the most of any WNBA expansion team (excluding the 1997 WNBA inaugural season). The Shock reached 17 wins in 30 games (their final game of the season), while the Valkyries accomplished the feat in 32 games.
- The Valkyries' win over Chicago on 8/15 was their fourth straight, their longest win streak of the season. It's also the team's 18th, which is the most of any other WNBA expansion team, passing the 1998 Detroit Shock who went 17-13 during a 30-game season.
- Tiffany Hayes is currently 31st on the WNBA's all-time scoring list (4,926), tenth among active players, and 59 points away from passing former UConn teammate Maya Moore (4,984) for 30th all-time in W history. Hayes is one of five active players with over 4,900 career points, 1,200 rebounds, 900 assists and 350 steals, and became the 23rd player in league history to reach 10,000 minutes, 4,800 points, 1,200 rebounds and 350 steals in their career on versus Washington (7/31).
- Six Valkyries (Kayla Thornton - 5, Veronica Burton - 4, Temi Fágbenlé - 2, Laeticia Amihere - 1, Monique Billings - 1, Janelle Salaün - 1) have recorded doubles-doubles this season.
- Iliana Rupert is first (44.7 percent), Cecilia Zandalasini is second (44.6 percent), and Tiffany Hayes is tenth (40.6 percent) the W in 3FG%. Hayes' career high 3FG% in a season is 42.9 (2022 - Atlanta). Golden State is 5-0 when Zandalasini makes three-or-more threes in a game this season, and the Valkyries are 4-1 when shooting 42.0 percent or better from three this year.

- The Valkyries have four separate three-game winning streaks this season, the second of which came on three straight road wins. Golden State recently won four straight (8/9-8/15). Golden State is currently on a season-high five-game winning streak, four of which have come at home.
- Golden State is third in the league in rebounds per game (35.3), and have the second and third-most rebounds in a game among all WNBA teams this season, 51 (vs. CON on 6/22) and 49 (at LAS on 6/9). The Valkyries are 6-1 when posting 40+ rebounds. Additionally, the Valkyries are averaging 34.4 rebounds per game on the road this season (fifth best in the W).
- The Valkyries get 37.7 percent of their points from three, which is the highest clip in the

league, and 19.3 percent from the charity stripe, the second highest mark in the WNBA. 46.0 percent of Golden State's FGA have come from three-point range, which is the highest in the W.

- The Valkyries won both of their back-to-backs (7:31 at WASH, 8:1 at CHI - 8/30 vs WASH, 8:31 vs. IND).
- Golden State is 2-6 in games with 2 days of rest, however are posting a +/- of 0.4 in those games. The Valkyries are averaging 78.6 PPG, and giving up 79.0 PPG.
- Shooting the last five games FG% then 3FG%:

Rupert: 20 - 43 (46.5)	11-27 (40.7)
Salaün: 24 - 53 (45.3)	15-29 (51.7)
Charles: 22 - 45 (48.9)	5-16 (31.3)
Fágbenlé: 17 - 31 (54.8)	
- Iliana Rupert is shooting 41-80 (51.3 percent) in the second half this season, and 26-54 (48.1 percent) from three in the third and fourth quarters.
- The Valkyries are third in free throw percentage at 81.5. The Valkyries have seven players on the current roster who are shooting 80.0 percent or better from the line this season, including Iliana Rupert (93.8), Cecilia Zandalasini (89.7), and Veronica Burton (87.8).
- The Valkyries are shooting a WNBA-low 42.9 percent from the field in wins, however are stepping up defensively in these games, with a WNBA-best defensive rating of 90.5 an opponent eFG% of 42.8 (best in the W), an opponent FG% of 37.2 (best in the W), and an opponent points average of 69.0 - Golden State is the only team in the league holding opponents to an under 70 PPG average in wins.
- Golden State is holding opponents to a league-best 44.2 FG%, and just 31.7 PTPP in road games this season, both of which are WNBA bests. The Valkyries are limiting opponents to a league-best 71.8 PPG in wins on the road this season.
- Cecilia Zandalasini (7th - 63.3) & Iliana Rupert (13th - 61.5) are both in the top 15 in the league in true shooting percentage (min 10 games), (measures a player's efficiency at scoring, taking into account field goals, 3-pointers, and free throws).
- Veronica Burton is averaging 76 APG her last five games, which are the fourth-most APG in the league over a five-game span.
- Carla Leite is 7th in the W with a 93.3 defensive rating (min. 10 GP), and 4th among rookies. Additionally, Leite's usage percentage of 22.3 is the 5th highest among rookies (min 5 GP)
- Veronica Burton (89.0) is 7th all-time in WNBA history in free throw percentage among players with at least 150 career attempts. Burton has 19 games this season in which she hasn't missed a free throw.
- The Valkyries are 4th in defensive rating (99.9), and have a league-leading 91.4 defensive rating their last five games.
- Golden State is second in the W in opponent PPG at 76.5 and are holding opponents to a league-best 40.4 field goal percentage. The Valkyries are third in defensive rebounds per game 26.7. Additionally, Golden State is holding opponents to a league-best 28.8 points in the paint, and a 31.6 3FG% (second best in the league).

### Veronica Burton for WNBA Most Improved Player:

- Is averaging over 8 points, 5 assists and 3 rebounds a game from a season ago, no other WNBA player in league history has had this season-to-season increase
- The first WNBA player ever to have 24 points, 14 assists and 0 turnovers in a game (8/19)
- Is the third player all-time to have 30 points, seven rebounds, seven assists, and shoot 75.0 percent from the field or better (8/13)
- Is posting a WNBA-best 9.01 PPG and a 3.76 APG improvement from last season to this season, as well as a W-high 16:22 MPG increase.
- Ranks 4th with 5.9 assists per game, and 7th with a 2.78 assist to turnover ratio (min 10 games).
- Is the only player in the league this season with three games of 10+ assists and 0 turnovers, which she did on 6/7 vs. LVA, 6/25 vs. NYL and 8/19 vs. PHX, and is one of eight players all-time with multiple games of 10+ assists and 0 turnovers in the regular season
- Has four assists-points double-doubles this season
- Has the second-most games (7) this season with 10+ assists, trailing just Alyssa Thomas
- Is the only player in the W leading their team in total points, rebounds and assists
- 1st in APG Diff (Assists Per Game Difference); From 1.9 to 5.9 APG.
- 1st in PPG Diff (Points Per Game Difference); From 3.1 to 12 PPG.
- 4th in SPG Diff (Steals Per Game Difference); From 0.5 to 1.1 SPG.
- 2nd in RPG Diff (Rebounds Per Game Difference); From 1.4 to 4.5 RPG.
- 5th in BPG Diff (Blocks Per Game Difference); From 0.2 to 0.6 BPG

• Iliana Rupert (No. 15), Janalle Salaün (No. 17), Carla Leite (No. 22) and Laeticia Amihere (No. 25) headlined ESPN's WNBA 25 under 25 list. Golden State is tied with Connecticut and Dallas for the most players on this list (4).

• Golden State is one of four teams in the league to be undefeated in overtime this season, along with the Indiana Fever, Minnesota Lynx and Washington Mystics. The Valkyries' OT win came at Los Angeles on June 9.

• Golden State wrapped up its first-ever Commissioner's Cup with a 3-3 record, amounting to \$12,000, the team's beneficiary organization.

### Home Court Advantage

• The Golden State Valkyries set the all-time WNBA attendance record for average attendance (18,064) and total fans (397,408) during their inaugural regular season presented by Kaiser Permanente, and sold out all 22 regular-season home games at Chase Center in 2025.

• On March 26, 2025, the Golden State Valkyries eclipsed the 10,000 season ticket mark for the team's inaugural 2025 season, presented by Kaiser Permanente. The Valkyries, who are the first WNBA expansion team since 2008, became the first WNBA team on record to hit this milestone.

• The Valkyries drew a sellout attendance of 18,064 during their home opener on May 16, which is the second-highest attendance by a WNBA team in their first-ever home game (Washington Mystics - 20,674 on 6/19/1998). That attendance was also the sixth highest in a team's first home game of the season. Golden State followed up with two more sellouts, becoming the first WNBA franchise to have an attendance of 18,000+ in each of its first three home games.

### Milestone Watch

- Monique Billings is 6 points away from 1,500 in her career (at 1,494)
- Veronica Burton is 1 three-pointer away from 100 in her career (at 99).

## TONIGHT'S OPPONENT

2025-26 REGULAR SEASON	PPG	OPP. PPG	FG%	3FG%	FT%	RPG	APG	SPG	TO	BPG
<b>Valkyries</b>	78.4	76.5	.410	.329	.815	35.3	18.6	6.62	14.1	2.81
<b>Storm</b>	82.3	80.3	.451	.341	.772	30.8	21.4	8.58	12.2	5.02



2025-26 REGULAR SEASON INDIVIDUAL BESTS			2025-26 REGULAR SEASON STORM BESTS			2025-26 REGULAR SEASON TEAM		
Points	22	Kayla Thornton vs. SEA 6/14/25	Points	22	Nneka Ogumike @ SEA 7/16/25	Biggest Win	27	vs. SEA 6/29/25
Rebounds	12	Kayla Thornton vs. SEA 6/14/25	Rebounds	8	Nneka Ogumike @ SEA 7/16/25, Ezi Magbegor @ SEA 7/16/25	Biggest Loss	9	@ SEA 7/16/25
Assists	9	Veronica Burton vs. SEA 6/14/25	Assists	6	Skylar Diggins @ SEA 7/16/25, Skylar Diggins vs. SEA 6/29/25			

2025-26 REGULAR SEASON VS. STORM			2024-25 REGULAR SEASON VS. STORM			SERIES HISTORY VS. STORM				
DATE	SITE	TIME/RESULT	DATE	SITE	RESULT		ALL-TIME	STREAKS	LAST WIN	LAST LOSS
6/14/25	Golden State	W, 76-70			No Games	<b>Overall</b>	2-1	Lost 1	6/29/25	7/16/25
6/29/25	Golden State	W, 84-57				<b>Home</b>	2-0	Won 2	6/29/25	--
7/16/25	Seattle	L, 58-67				<b>Road</b>	0-1	Lost 1	--	7/16/25
9/9/25	Seattle	7:00 pm								

## PREVIOUS MEETING

### STORM 67, VALKYRIES 58 – JULY 16, 2025 – CLIMATE PLEDGE ARENA – SEATTLE, WA – GAME #22 (10-12, 3-8 AWAY)

TEAM	1	2	3	4	OT	FINAL	FG	FGA	FG%	3FG%	FT%	OR	DR	TR	A	PF	ST	TO	BS
<b>GSV</b>	15	16	13	14	-	<b>58</b>	19	60	.317	.226	.813	5	30	35	13	24	2	14	5
<b>SEA</b>	14	17	17	19	-	<b>67</b>	21	64	.328	.241	.818	6	27	33	13	20	7	8	4
TEAM	HIGH PTS		HIGH REB		HIGH AST		TEAM	HIGH PTS		HIGH REB		HIGH AST							
<b>GSV</b>	C. Zandalasini: 12		V. Burton: 8		V. Burton: 4		<b>SEA</b>	N. Ogumike: 22		E. Magbegor/N. Ogumike: 8		S. Diggins: 6							

SEATTLE (AP) — Nneka Ogumike scored 22 points to move into sixth place on the WNBA's all-time scoring list and the Seattle Storm beat the Golden State Valkyries 67-58 on Wednesday.

Ogumike passed Candice Dupree (6,895 points) by one point and is now behind Tamika Catchings, who scored 7,380 in her career.

The Storm (14-9) went to Ogumike quite often down the stretch. She had 11 of her 22 points in the fourth quarter, including a pivotal layup with 2:09 remaining and a pair of free throws at the 1:18 mark to put Seattle up 61-54.

Erica Wheeler had a strong third quarter, sinking back-to-back 3-pointers early and following with a running layup at the 7:41 mark to put the Storm up 39-33.

With 2:32 to go in the third, Wheeler converted a three-point play to give Seattle a 45-37 lead. The Valkyries (10-12) made it 56-54 with just 4:48 to go in regulation on a layup from Veronica Burton.

Ogumike's late efforts were enough to stymie the late Golden State push.

Wheeler had 15 points. Skylar Diggins scored 10 and Lexie Brown scored seven off the bench.

Cecilia Zandalasini had 12 points and Janelle Salaun scored 10 for the Valkyries.

DATE	OPPONENT	FORWARD	FORWARD	CENTER	GUARD	GUARD	SCORE	W/L
05/16/2025	vs. Los Angeles	#5 Kayla Thornton	#20 Kate Martin	#14 Temi Fágbenlé	#15 Tiffany Hayes	#22 Veronica Burton	84-67	L
05/21/2025	vs. Washington	#5 Kayla Thornton	#13 Janelle Salaün	#14 Temi Fágbenlé	#22 Veronica Burton	#15 Tiffany Hayes	76-74	W
05/23/2025	@ Los Angeles	#13 Janelle Salaün	#5 Kayla Thornton	#14 Temi Fágbenlé	#22 Veronica Burton	#35 Julie Vanloo	82-73	W
05/27/2025	@ New York	#5 Kayla Thornton	#7 Stephanie Talbot	#14 Temi Fágbenlé	#22 Veronica Burton	#13 Janelle Salaün	95-67	L
05/29/2025	@ New York	#5 Kayla Thornton	#7 Stephanie Talbot	#14 Temi Fágbenlé	#22 Veronica Burton	#13 Janelle Salaün	82-77	L
06/01/2025	vs. Minnesota	#5 Kayla Thornton	#13 Janelle Salaün	#14 Temi Fágbenlé	#22 Veronica Burton	#15 Tiffany Hayes	86-75	L
06/05/2025	@ Phoenix	#5 Kayla Thornton	#13 Janelle Salaün	#14 Temi Fágbenlé	#22 Veronica Burton	#24 Cecilia Zandalasini	86-77	L
06/07/2025	vs. Las Vegas	#5 Kayla Thornton	#13 Janelle Salaün	#14 Temi Fágbenlé	#22 Veronica Burton	#24 Cecilia Zandalasini	95-68	W
06/09/2025	@ Los Angeles	#5 Kayla Thornton	#13 Janelle Salaün	#14 Temi Fágbenlé	#22 Veronica Burton	#35 Julie Vanloo	89-81	W
06/14/2025	vs. Seattle	#5 Kayla Thornton	#7 Stephanie Talbot	#14 Temi Fágbenlé	#22 Veronica Burton	#0 Carla Leite	76-70	W
06/17/2025	@ Dallas	#5 Kayla Thornton	#7 Stephanie Talbot	#25 Monique Billings	#22 Veronica Burton	#0 Carla Leite	80-71	L
06/19/2025	vs. Indiana	#5 Kayla Thornton	#7 Stephanie Talbot	#25 Monique Billings	#22 Veronica Burton	#0 Carla Leite	88-77	W
06/22/2025	vs. Connecticut	#5 Kayla Thornton	#7 Stephanie Talbot	#25 Monique Billings	#22 Veronica Burton	#15 Tiffany Hayes	87-63	W
06/25/2025	vs. New York	#5 Kayla Thornton	#7 Stephanie Talbot	#25 Monique Billings	#22 Veronica Burton	#15 Tiffany Hayes	81-78	L
06/27/2025	vs. Chicago	#5 Kayla Thornton	#7 Stephanie Talbot	#25 Monique Billings	#22 Veronica Burton	#15 Tiffany Hayes	83-78	W
06/29/2025	vs. Seattle	#5 Kayla Thornton	#7 Stephanie Talbot	#25 Monique Billings	#22 Veronica Burton	#15 Tiffany Hayes	84-57	W
07/05/2025	@ Minnesota	#5 Kayla Thornton	#7 Stephanie Talbot	#14 Temi Fágbenlé	#22 Veronica Burton	#15 Tiffany Hayes	82-71	L
07/07/2025	@ Atlanta	#5 Kayla Thornton	#25 Monique Billings	#14 Temi Fágbenlé	#22 Veronica Burton	#15 Tiffany Hayes	90-81	L
07/09/2025	@ Indiana	#20 Kate Martin	#5 Kayla Thornton	#14 Temi Fágbenlé	#22 Veronica Burton	#15 Tiffany Hayes	80-61	W
07/12/2025	@ Las Vegas	#13 Janelle Salaün	#5 Kayla Thornton	#14 Temi Fágbenlé	#15 Tiffany Hayes	#22 Veronica Burton	104-102	L
07/14/2025	vs. Phoenix	#13 Janelle Salaün	#5 Kayla Thornton	#14 Temi Fágbenlé	#15 Tiffany Hayes	#22 Veronica Burton	78-77	L
07/16/2025	@ Seattle	#13 Janelle Salaün	#5 Kayla Thornton	#14 Temi Fágbenlé	#22 Veronica Burton	#15 Tiffany Hayes	67-58	L
07/25/2025	vs. Dallas	#24 Cecilia Zandalasini	#13 Janelle Salaün	#14 Temi Fágbenlé	#22 Veronica Burton	#15 Tiffany Hayes	86-76	W
07/27/2025	@ Connecticut	#24 Cecilia Zandalasini	#13 Janelle Salaün	#14 Temi Fágbenlé	#22 Veronica Burton	#15 Tiffany Hayes	95-64	L
07/29/2025	@ Atlanta	#13 Janelle Salaün	#25 Monique Billings	#14 Temi Fágbenlé	#22 Veronica Burton	#15 Tiffany Hayes	77-75	W
07/31/2025	@ Washington	#12 Iliana Rupert	#13 Janelle Salaün	#14 Temi Fágbenlé	#15 Tiffany Hayes	#22 Veronica Burton	68-67	W
08/01/2025	@ Chicago	#13 Janelle Salaün	#20 Kate Martin	#14 Temi Fágbenlé	#22 Veronica Burton	#0 Carla Leite	73-66	W
08/03/2025	@ Las Vegas	#13 Janelle Salaün	#12 Iliana Rupert	#14 Temi Fágbenlé	#0 Carla Leite	#22 Veronica Burton	101-77	L
08/06/2025	vs. Las Vegas	#13 Janelle Salaün	#24 Cecilia Zandalasini	#14 Temi Fágbenlé	#15 Tiffany Hayes	#22 Veronica Burton	78-72	L
08/09/2025	vs. Los Angeles	#13 Janelle Salaün	#24 Cecilia Zandalasini	#14 Temi Fágbenlé	#22 Veronica Burton	#15 Tiffany Hayes	72-59	W
08/11/2025	vs. Connecticut	#13 Janelle Salaün	#24 Cecilia Zandalasini	#14 Temi Fágbenlé	#22 Veronica Burton	#15 Tiffany Hayes	74-57	W
08/13/2025	@ Washington	#13 Janelle Salaün	#24 Cecilia Zandalasini	#14 Temi Fágbenlé	#15 Tiffany Hayes	#22 Veronica Burton	88-83	W
08/15/2025	@ Chicago	#13 Janelle Salaün	#24 Cecilia Zandalasini	#14 Temi Fágbenlé	#22 Veronica Burton	#15 Tiffany Hayes	90-59	W
08/17/2025	vs. Atlanta	#13 Janelle Salaün	#24 Cecilia Zandalasini	#14 Temi Fágbenlé	#15 Tiffany Hayes	#22 Veronica Burton	79-63	L
08/19/2025	vs. Phoenix	#20 Kate Martin	#13 Janelle Salaün	#14 Temi Fágbenlé	#22 Veronica Burton	#0 Carla Leite	98-91	L
08/22/2025	@ Phoenix	#12 Iliana Rupert	#13 Janelle Salaün	#14 Temi Fágbenlé	#15 Tiffany Hayes	#22 Veronica Burton	81-72	L
08/24/2025	@ Dallas	#12 Iliana Rupert	#13 Janelle Salaün	#14 Temi Fágbenlé	#6 Kaila Charles	#22 Veronica Burton	90-81	W
08/30/2025	vs. Washington	#13 Janelle Salaün	#12 Iliana Rupert	#14 Temi Fágbenlé	#22 Veronica Burton	#6 Kaila Charles	99-62	W
08/31/2025	vs. Indiana	#13 Janelle Salaün	#12 Iliana Rupert	#14 Temi Fágbenlé	#22 Veronica Burton	#6 Kaila Charles	75-63	W
09/02/2025	vs. New York	#13 Janelle Salaün	#12 Iliana Rupert	#14 Temi Fágbenlé	#22 Veronica Burton	#6 Kaila Charles	66-58	W
09/04/2025	vs. Dallas	#13 Janelle Salaün	#12 Iliana Rupert	#14 Temi Fágbenlé	#22 Veronica Burton	#6 Kaila Charles	84-80	W
09/06/2025	vs. Minnesota	#13 Janelle Salaün	#12 Iliana Rupert	#14 Temi Fágbenlé	#22 Veronica Burton	#6 Kaila Charles	78-72	L
09/09/2025	at Seattle	--	--	--	--	--	--	--
09/11/2025	at Minnesota	--	--	--	--	--	--	--

STARTING LINEUPS								
LAST USED	GAME	FORWARD	FORWARD	CENTER	GUARD	GUARD	RECORD	
5/29	at Liberty	Kayla Thornton	Stephanie Talbot	Temi Fágbenlé	Janelle Salaün	Veronica Burton	0-2	
6/7	vs. Aces	Kayla Thornton	Janelle Salaün	Temi Fágbenlé	Cecilia Zandalasini	Veronica Burton	1-1	
6/9	at Sparks	Kayla Thornton	Janelle Salaün	Temi Fágbenlé	Julie Vanloo	Veronica Burton	2-0	
6/14	vs. Storm	Kayla Thornton	Stephanie Talbot	Temi Fágbenlé	Carla Leite	Veronica Burton	1-0	
6/19	vs. Fever	Kayla Thornton	Stephanie Talbot	Monique Billings	Carla Leite	Veronica Burton	1-1	
6/29	vs. Storm	Kayla Thornton	Stephanie Talbot	Monique Billings	Tiffany Hayes	Veronica Burton	3-1	
7/5	at Lynx	Kayla Thornton	Stephanie Talbot	Temi Fágbenlé	Tiffany Hayes	Veronica Burton	0-1	
7/7	at Dream	Kayla Thornton	Monique Billings	Temi Fágbenlé	Tiffany Hayes	Veronica Burton	0-1	
7/9	at Fever	Kate Martin	Kayla Thornton	Temi Fágbenlé	Tiffany Hayes	Veronica Burton	1-1	
7/16	at Storm	Janelle Salaün	Kayla Thornton	Temi Fágbenlé	Tiffany Hayes	Veronica Burton	1-4	
7/29	at Dream	Janelle Salaün	Monique Billings	Temi Fágbenlé	Tiffany Hayes	Veronica Burton	1-0	
8/3	at Aces	Janelle Salaün	Iliana Rupert	Temi Fágbenlé	Veronica Burton	Carla Leite	0-1	
8/17	vs. Dream	Janelle Salaün	Cecilia Zandalasini	Temi Fágbenlé	Veronica Burton	Tiffany Hayes	5-3	
8/19	vs. Mercury	Kate Martin	Janelle Salaün	Temi Fágbenlé	Carla Leite	Veronica Burton	1-1	
8/22	at Mercury	Iliana Rupert	Janelle Salaün	Temi Fágbenlé	Veronica Burton	Tiffany Hayes	1-1	
9/6	vs. Lynx	Janelle Salaün	Iliana Rupert	Temi Fágbenlé	Kaila Charles	Veronica Burton	5-1	

## GAME-BY-GAME STATS & PLAYER STAT SUMMARY

DATE	OPPONENT	W/L	FG	FGA	PCT	3FG	3FGA	PCT	FT	FTA	PCT	OR	DR	REB	AST	PF	ST	TO	BS	PTS
5/16	Los Angeles	L	23	63	0.365	9	35	0.257	12	13	0.923	9	24	33	13	16	8	22	2	67
5/21	Washington	W	23	72	0.319	7	37	0.189	23	28	0.821	11	26	37	15	22	10	13	2	76
5/23	at Los Angeles	W	27	65	0.415	9	29	0.310	19	21	0.905	8	26	34	15	15	13	17	4	82
5/27	at New York	L	21	62	0.339	11	31	0.355	14	19	0.737	7	27	34	16	15	10	23	4	67
5/29	at New York	L	29	72	0.403	10	34	0.294	9	14	0.643	15	26	41	25	24	3	16	1	77
6/1	Minnesota	L	24	65	0.369	9	34	0.265	18	22	0.818	10	27	37	15	19	9	15	4	75
6/5	at Phoenix	L	25	60	0.417	9	29	0.310	18	25	0.720	8	21	29	17	16	11	19	3	77
6/7	Las Vegas	W	34	71	0.479	10	28	0.357	17	18	0.944	9	34	43	24	23	7	12	3	95
6/9	at Los Angeles	W	32	80	0.400	5	32	0.156	20	23	0.870	17	32	49	20	25	8	14	5	89
6/14	Seattle	W	28	58	0.483	3	18	0.167	17	19	0.895	6	27	33	21	19	9	20	2	76
6/17	at Dallas	L	24	59	0.407	7	20	0.350	16	23	0.696	5	23	28	17	19	5	17	6	71
6/19	Indiana	W	30	70	0.429	9	31	0.290	19	27	0.704	8	24	32	18	18	10	7	5	88
6/22	Connecticut	W	28	78	0.359	9	31	0.290	22	29	0.759	19	32	51	18	16	9	10	3	87
6/25	New York	L	28	72	0.389	12	35	0.343	10	12	0.833	10	28	38	20	14	5	12	3	78
6/27	Chicago	W	26	69	0.377	11	30	0.367	20	29	0.690	10	32	42	16	19	4	9	2	83
6/29	Seattle	W	31	64	0.484	8	27	0.296	14	18	0.778	6	35	41	20	10	5	17	4	84
7/5	at Minnesota	L	27	65	0.415	11	32	0.344	6	8	0.750	9	24	33	19	19	2	12	1	71
7/7	at Atlanta	L	30	63	0.476	12	29	0.414	9	9	1.000	4	25	29	19	22	5	21	0	81
7/9	at Indiana	W	26	70	0.371	12	32	0.375	16	21	0.762	11	36	47	18	16	7	17	2	80
7/12	at Las Vegas	L	35	68	0.515	12	32	0.375	20	24	0.833	9	19	28	23	25	4	10	2	102
7/14	Phoenix	L	25	74	0.338	14	33	0.424	13	15	0.867	11	25	36	23	16	7	11	1	77
7/16	at Seattle	L	19	60	0.317	7	31	0.226	13	16	0.813	5	30	35	13	24	2	14	5	58
7/25	Dallas	W	27	64	0.422	9	28	0.321	23	25	0.920	10	29	39	21	17	8	17	1	86
7/27	at Connecticut	L	20	59	0.339	9	32	0.281	15	23	0.652	8	16	24	15	17	9	24	3	64
7/29	at Atlanta	W	30	63	0.476	11	26	0.423	6	8	0.750	9	25	34	17	21	4	13	2	77
7/31	at Washington	W	22	57	0.386	11	26	0.423	13	15	0.867	6	32	38	21	15	3	16	3	68
8/1	at Chicago	W	24	65	0.369	10	30	0.333	15	16	0.938	5	27	32	19	16	6	10	3	73
8/3	at Las Vegas	L	25	73	0.342	10	34	0.294	17	18	0.944	17	22	39	19	15	10	14	1	77
8/6	Las Vegas	L	25	63	0.397	4	22	0.182	18	19	0.947	9	22	31	9	24	7	13	0	72
8/9	Los Angeles	W	27	61	0.443	12	34	0.353	6	10	0.600	6	31	37	20	13	5	15	3	72
8/11	Connecticut	W	26	63	0.413	13	33	0.394	9	13	0.692	7	25	32	22	18	4	9	2	74
8/13	at Washington	W	29	57	0.509	15	32	0.469	15	17	0.882	7	23	30	20	17	4	13	0	88
8/15	at Chicago	W	27	56	0.482	14	27	0.519	22	25	0.880	6	25	31	19	13	12	8	2	90
8/17	Atlanta	L	21	60	0.350	7	29	0.241	14	16	0.875	5	22	27	14	16	6	9	4	63
8/19	Phoenix	L	32	77	0.416	12	35	0.343	15	17	0.882	9	20	29	20	18	9	4	1	91
8/22	at Phoenix	L	25	67	0.373	8	31	0.258	14	19	0.737	6	25	31	20	14	7	9	5	72
8/24	at Dallas	W	28	62	0.452	16	38	0.421	18	18	1.000	9	32	41	24	14	2	14	7	90
8/30	Washington	W	33	60	0.550	12	31	0.387	21	24	0.875	1	30	31	25	17	9	12	4	99
8/31	Indiana	W	28	55	0.509	12	19	0.632	7	9	0.778	4	30	34	19	18	6	21	3	75
9/2	New York	W	22	59	0.373	7	26	0.269	15	20	0.750	9	26	35	15	17	5	15	1	66
9/4	Dallas	W	29	65	0.446	7	20	0.350	19	23	0.826	10	28	38	22	16	5	15	7	84
9/6	Minnesota	L	27	70	0.386	9	35	0.257	9	12	0.750	9	29	38	16	13	4	12	2	72
<b>2025-26 TOTALS</b>		<b>23-19</b>	<b>1,122</b>	<b>2,736</b>	<b>--</b>	<b>414</b>	<b>1,258</b>	<b>--</b>	<b>636</b>	<b>780</b>	<b>--</b>	<b>359</b>	<b>1,122</b>	<b>1,481</b>	<b>782</b>	<b>741</b>	<b>278</b>	<b>591</b>	<b>118</b>	<b>3,294</b>
<b>AVG/GAME</b>			<b>26.7</b>	<b>65.1</b>	<b>0.410</b>	<b>9.9</b>	<b>30.0</b>	<b>0.329</b>	<b>15.1</b>	<b>18.6</b>	<b>0.815</b>	<b>8.5</b>	<b>26.7</b>	<b>35.3</b>	<b>18.6</b>	<b>17.6</b>	<b>6.6</b>	<b>14.1</b>	<b>2.8</b>	<b>78.4</b>

DATE	OPPONENT	W/L	VALKYRIES											OPPONENTS										
			BENCH PTS	AVG	IN THE PAINT	AVG	SECOND CHANCE	AVG	FAST BREAK	AVG	POINTS OFFTO	AVG	BENCH PTS	AVG	IN THE PAINT	AVG	SECOND CHANCE	AVG	FAST BREAK	AVG	POINTS OFFTO	AVG		
5/16	Los Angeles	L	23	23.0	22	22.0	12	12.0	9	9.0	15	15.0	2	2.0	40	40.0	3	3.0	17	17.0	25	25.0		
5/21	Washington	W	18	20.5	28	25.0	9	10.5	10	9.5	17	16.0	20	11.0	32	36.0	14	8.5	9	13.0	7	16.0		
5/23	at Los Angeles	W	30	23.7	30	26.7	4	8.3	14	11.0	22	18.0	6	9.3	28	33.3	10	9.0	9	11.7	13	15.0		
5/27	at New York	L	19	22.5	16	24.0	7	8.0	15	12.0	19	18.3	37	16.3	40	35.0	9	9.0	24	14.8	32	19.3		
5/29	at New York	L	29	23.8	30	25.2	10	8.4	4	10.4	15	17.6	10	15.0	18	31.6	14	10.0	17	15.2	23	20.0		
6/1	Minnesota	L	24	23.8	26	25.3	12	9.0	21	12.2	10	16.3	14	14.8	18	29.3	10	10.0	15	15.2	15	19.2		
6/5	at Phoenix	L	20	23.3	26	25.4	7	8.7	6	11.3	19	16.7	41	18.6	28	29.1	17	11.0	5	13.7	20	19.3		
6/7	Las Vegas	W	30	24.1	38	27.0	10	8.9	22	12.6	10	15.9	25	19.4	26	28.8	4	10.1	6	12.8	7	17.8		
6/9	at Los Angeles	W	25	24.2	46	29.1	16	9.7	8	12.1	13	15.6	18	19.2	42	30.2	11	10.2	25	14.1	21	18.1		
6/14	Seattle	W	12	23.0	46	30.8	11	9.8	13	12.2	16	15.6	18	19.1	26	29.8	6	9.8	18	14.5	20	18.3		
6/17	at Dallas	L	24	23.1	30	30.7	6	9.5	6	11.6	18	15.8	23	19.5	32	30.0	20	10.7	14	14.5	14	17.9		
6/19	Indiana	W	45	24.9	34	31.0	17	10.1	12	11.7	10	15.3	17	19.3	38	30.7	10	10.7	6	13.8	7	17.0		
6/22	Connecticut	W	32	25.5	32	31.1	23	11.1	12	11.7	10	14.9	21	19.4	12	29.2	15	11.0	5	13.1	6	16.2		
6/25	New York	L	30	25.8	30	31.0	13	11.2	5	11.2	10	14.6	31	20.2	28	29.1	10	10.9	6	12.6	12	15.9		
6/27	Chicago	W	30	26.1	28	30.8	7	10.9	10	11.1	16	14.7	23	20.4	20	28.5	11	10.9	15	12.7	11	15.5		
6/29	Seattle	W	32	26.4	46	31.8	6	10.6	20	11.7	15	14.7	14	20.0	18	27.9	14	11.1	4	12.2	12	15.3		
7/5	at Minnesota	L	12	25.6	32	31.8	13	10.8	4	11.2	5	14.1	21	20.1	28	27.9	15	11.4	4	11.7	19	15.5		
7/7	at Atlanta	L	24	25.5	34	31.9	10	10.7	10	11.2	5	13.6	19	20.0	34	28.2	9	11.2	10	11.6	27	16.2		
7/9	at Indiana	W	23	25.4	26	31.6	13	10.8	4	10.8	12	13.5	22	20.1	26	28.1	13	11.3	10	11.5	6	15.6		
7/12	at Las Vegas	L	36	25.9	38	31.9	14	11.0	2	10.4	11	13.4	17	20.0	48	29.1	16	11.6	8	11.4	8	15.3		
7/14	Phoenix	L	25	25.9	10	30.9	15	11.2	8	10.2	10	13.2	27	20.3	22	28.8	6	11.3	17	11.6	8	14.9		
7/16	at Seattle	L	28	26.0	22	30.5	0	10.7	6	10.0	5	12.9	13	20.0	20	28.4	11	11.3	5	11.3	6	14.5		
7/25	Dallas	W	27	26.0	34	30.6	11	10.7	7	9.9	15	13.0	27	20.3	28	28.3	10	11.2	11	11.3	20	14.7		
7/27	at Connecticut	L	34	26.3	22	30.3	5	10.5	2	9.6	17	13.1	28	20.6	36	28.7	6	11.0	14	11.4	34	15.5		

7/29	at Atlanta	W	39	26.8	32	30.3	15	10.6	4	9.4	12	13.1	16	20.4	26	28.6	9	10.9	6	11.2	22	15.8	
7/31	at Washington	W	28	26.9	16	29.8	11	10.7	6	9.2	3	12.7	16	20.2	32	28.7	10	10.9	13	11.3	17	15.8	
8/1	at Chicago	W	21	26.7	22	29.5	13	10.7	0	8.9	14	12.7	10	19.9	32	28.8	7	10.7	9	11.2	10	15.6	
8/3	at Las Vegas	L	32	26.9	26	29.4	27	11.3	2	8.6	13	12.8	50	20.9	28	28.8	28	11.4	6	11.0	15	15.6	
8/6	Las Vegas	L	24	26.8	34	29.5	6	11.1	6	8.6	7	12.6	18	20.8	32	28.9	9	11.3	9	10.9	8	15.3	
8/9	Los Angeles	W	15	26.4	30	29.5	7	11.0	3	8.4	6	12.3	18	20.7	24	28.7	7	11.1	4	10.7	13	15.3	
8/11	Connecticut	W	15	26.0	22	29.3	10	11.0	0	8.1	16	12.5	20	20.7	20	28.5	5	10.9	10	10.7	11	15.1	
8/13	at Washington	W	11	25.5	22	29.1	7	10.8	7	8.1	7	12.3	24	20.8	40	28.8	9	10.9	9	10.6	17	15.2	
8/15	at Chicago	W	28	25.6	22	28.8	6	10.7	8	8.1	16	12.4	7	20.4	28	28.8	6	10.7	7	10.5	11	15.1	
8/17	Atlanta	L	19	25.4	26	28.8	6	10.6	2	7.9	9	12.3	22	20.4	38	29.1	17	10.9	7	10.4	12	15.0	
8/19	Phoenix	L	18	25.2	34	28.9	15	10.7	2	7.7	13	12.3	24	20.5	40	29.4	16	11.1	14	10.5	4	14.7	
8/22	at Phoenix	L	28	25.3	24	28.8	4	10.5	14	7.9	17	12.4	23	20.6	26	29.3	7	10.9	9	10.5	10	14.5	
8/24	at Dallas	W	14	25.0	20	28.5	18	10.7	12	8.0	7	12.3	27	20.8	44	29.7	15	11.1	8	10.4	17	14.6	
8/30	Washington	W	36	25.3	38	28.8	8	10.6	6	7.9	19	12.5	19	20.7	20	29.4	6	10.9	6	10.3	15	14.6	
8/31	Indiana	W	21	25.2	30	28.8	9	10.6	7	7.9	15	12.5	19	20.7	24	29.3	15	11.0	4	10.1	16	14.6	
9/2	New York	W	22	25.1	24	28.7	6	10.5	3	7.8	18	12.7	12	20.5	20	29.1	11	11.0	10	10.1	10	14.5	
9/4	Dallas	W	35	25.3	32	28.8	4	10.3	6	7.8	12	12.7	7	20.1	36	29.2	6	10.9	6	10.0	12	14.5	
9/6	Minnesota	L	7	24.9	34	28.9	10	10.3	4	7.7	14	12.7	24	20.2	14	28.9	5	10.8	11	10.0	19	14.6	
<b>2025-26 TOTALS</b>			<b>23-19</b>	<b>1,045</b>	<b>24.9</b>	<b>1,214</b>	<b>28.9</b>	<b>433</b>	<b>10.3</b>	<b>322</b>	<b>7.7</b>	<b>533</b>	<b>12.7</b>	<b>850</b>	<b>20.2</b>	<b>1,212</b>	<b>28.9</b>	<b>452</b>	<b>10.8</b>	<b>422</b>	<b>10.0</b>	<b>612</b>	<b>14.6</b>

PLAYER	GP-GS	MIN	MPG	FG-ATT	FG%	3FG-ATT	3FG%	FT-FTA	FT%	OFF	DEF	TOT/AVG	AST	APG	PF-D	STL	SPG	TO	BLK	BPG	PTS	AVG
Burton	42-42	1,228	29.2	142-360	.394	61-170	.359	158-180	.878	47	140	187/4.5	247	5.9	97-183	44	1.05	89	26	0.62	503	12.0
Salaün	34-31	909	26.7	138-337	.409	58-159	.365	46-56	.821	27	139	166/4.9	41	1.2	69-70	20	0.59	52	3	0.09	380	11.2
Thornton	22-22	662	30.1	100-276	.362	40-142	.282	68-82	.829	40	114	154/7.0	33	1.5	52-56	29	1.32	36	5	0.23	308	14.0
Hayes	26-24	700	26.9	99-237	.418	41-101	.406	64-80	.800	18	82	100/3.8	77	3.0	58-79	14	0.54	49	4	0.15	303	11.7
Fágbéné	37-36	860	23.2	116-231	.502	11-58	.190	25-34	.735	64	116	180/4.9	59	1.6	112-55	31	0.84	55	20	0.54	268	7.2
Leite	35-6	619	17.7	86-217	.396	13-73	.178	82-97	.845	9	38	47/1.3	72	2.1	54-84	24	0.69	54	3	0.09	267	7.6
Martin	40-4	669	16.7	86-259	.332	57-180	.317	32-41	.780	18	91	109/2.7	40	1.0	47-30	17	0.43	34	4	0.10	261	6.5
Zandalasini	17-10	423	24.9	64-138	.464	37-83	.446	26-29	.897	5	48	53/3.1	32	1.9	32-28	16	0.94	20	4	0.24	191	11.2
Rupert	19-9	444	23.4	62-140	.443	42-94	.447	15-16	.938	17	53	70/3.7	30	1.6	44-21	11	0.58	16	10	0.53	181	9.5
Billings	24-8	434	18.1	68-144	.472	9-34	.265	34-51	.667	35	75	110/4.6	12	0.5	41-48	14	0.58	20	20	0.83	179	7.5
Amihere	28-0	380	13.6	51-113	.451	2-20	.100	49-63	.778	35	89	124/4.4	27	1.0	36-44	17	0.61	30	13	0.46	153	5.5
Charles	16-6	296	18.5	43-90	.478	14-37	.378	13-17	.765	18	47	65/4.1	14	0.9	30-18	16	1.00	17	2	0.13	113	7.1
Talbot	16-10	268	16.7	20-59	.339	8-32	.250	9-14	.643	14	39	53/3.3	32	2.0	21-11	9	0.56	19	1	0.06	57	3.6
Chen	23-0	242	10.5	19-50	.380	5-15	.333	5-7	.714	5	17	22/1.0	24	1.0	16-9	5	0.22	18	0	0.00	48	2.1
Vanloo	9-2	180	20.0	14-48	.292	8-38	.211	5-6	.833	2	15	17/1.9	37	4.1	16-10	6	0.67	23	0	0.00	41	4.6
Bibby	5-0	66	13.2	11-27	.407	8-19	.421	2-2	1.000	3	11	14/2.8	3	0.6	6-3	3	0.60	0	0	0.00	32	6.4
Linskens	4-0	27	6.7	2-5	.400	0-1	.000	0-0	.000	1	5	6/1.5	1	0.3	7-1	1	0.25	2	3	0.75	4	1.0
Hall	3-0	12	4.1	1-3	.333	0-2	.000	1-3	.333	0	2	2/0.7	0	0.0	3-1	0	0.00	3	0	0.00	3	1.0
Powers	2-0	7	3.5	0-2	.000	0-0	.000	2-2	1.000	1	1	2/1.0	1	0.5	0-2	1	0.50	0	0	0.00	2	1.0
<b>VALKYRIES</b>	<b>42</b>	<b>8,414</b>	<b>200.3</b>	<b>1,122-2,736</b>	<b>.410</b>	<b>414-1,258</b>	<b>.329</b>	<b>636-780</b>	<b>.815</b>	<b>359</b>	<b>1,122</b>	<b>1,481/35.3</b>	<b>782</b>	<b>18.6</b>	<b>741-753</b>	<b>278</b>	<b>6.62</b>	<b>537</b>	<b>118</b>	<b>2.81</b>	<b>3,294</b>	<b>78.4</b>
<b>OPPONENTS</b>	<b>42</b>	<b>8,414</b>	<b>200.3</b>	<b>1,118-2,768</b>	<b>.404</b>	<b>373-1,181</b>	<b>.316</b>	<b>604-765</b>	<b>.790</b>	<b>343</b>	<b>1,046</b>	<b>1,389/33.1</b>	<b>807</b>	<b>19.2</b>	<b>753-741</b>	<b>317</b>	<b>7.55</b>	<b>494</b>	<b>170</b>	<b>4.05</b>	<b>3,213</b>	<b>76.5</b>

	POINTS PER GAME		FIELD GOAL PERCENTAGE		TURNOVERS PER GAME		REBOUND PERCENTAGE			BELOW 100 PTS.		OVERTIME GAMES		DECIDED 3 PTS. OR LESS		DECIDED 10 PTS. OR MORE	
	OWN	OPP	OWN	OPP	OWN	OPP	OFF	DEF	TOT.	OWN	OPP.	W	L	W	L	W	L
Atlanta	83.0	76.1	.441	.433	12.3	12.1	.269	.801	.813	41	43	0	1	5	4	17	3
Chicago	75.9	85.6	.425	.449	17.1	12.0	.295	.746	.756	42	40	0	0	0	1	6	22
Connecticut	75.2	84.6	.415	.464	13.9	14.7	.242	.724	.696	42	36	0	1	2	3	6	21
Dallas	81.3	88.3	.421	.460	14.0	13.4	.272	.755	.725	42	37	0	1	2	4	4	18
Golden State	78.4	76.5	.410	.404	14.1	12.7	.256	.766	.782	41	40	1	0	3	3	11	7
Indiana	84.9	81.7	.456	.449	14.0	15.3	.262	.760	.743	40	41	1	0	1	5	14	9
Las Vegas	83.0	81.3	.435	.438	13.1	13.5	.235	.742	.736	38	38	0	0	5	1	13	9
Los Angeles	85.9	88.0	.459	.453	15.1	13.5	.244	.738	.753	37	38	1	1	7	2	8	11
Minnesota	86.7	77.1	.473	.425	12.9	15.3	.255	.744	.766	37	42	1	0	1	1	20	4
New York	84.5	80.5	.453	.422	14.0	13.8	.207	.729	.776	40	38	0	0	3	1	13	8
Phoenix	83.0	79.5	.434	.425	13.4	15.3	.244	.761	.745	38	41	0	0	3	4	10	7
Seattle	82.3	80.3	.451	.444	12.2	16.2	.196	.743	.720	40	42	0	1	3	3	12	7
Washington	77.4	81.7	.439	.445	15.4	13.7	.239	.774	.775	41	43	1	0	3	6	5	13
<b>552 GAMES</b>	<b>81.6</b>	<b>81.6</b>	<b>.439</b>	<b>.439</b>	<b>14.0</b>	<b>14.0</b>	<b>.247</b>	<b>.753</b>	<b>.753</b>	<b>519</b>	<b>519</b>	<b>5</b>	<b>38</b>	<b>38</b>	<b>38</b>	<b>139</b>	<b>139</b>

DATE	OPPONENT	OVERALL REC	W/L	VALKYRIES										OPPONENTS							POINT DIFF.	
				1ST	2ND	1ST HALF	3RD	4TH	2ND HALF	1ST OT	BIGGEST LEAD	TOTAL	1ST	2ND	1ST HALF	3RD	4TH	2ND HALF	1ST OT	BIGGEST LEAD		TOTAL
5/16	Los Angeles	0-1	L	20	19	39	21	7	28	--	4	67	19	23	42	24	18	42	--	17	84	-17
5/21	Washington	1-1	W	11	20	31	16	29	45	--	7	76	14	16	30	16	28	44	--	9	74	2
5/23	at Los Angeles	2-1	W	24	25	49	19	14	33	--	20	82	26	9	35	18	20	38	--	11	73	9
5/27	at New York	2-2	L	10	19	29	22	16	38	--	0	67	27	21	48	19	28	47	--	33	95	-28
5/29	at New York	2-3	L	18	19	37	19	21	40	--	4	77	20	17	37	20	25	45	--	6	82	-5
6/1	Minnesota	2-4	L	23	29	52	8	15	23	--	5	75	27	24	51	17	18	35	--	22	86	-11
6/5	at Phoenix	2-5	L	16	22	38	23	16	39	--	8	77	21	16	37	24	25	49	--	9	86	-9
6/7	Las Vegas	3-5	W	15	34	49	22	24	46	--	29	95	13	15	28	21	19	40	--	0	68	27
6/9	at Los Angeles	4-5	W	25	15	40	25	13	38	11	9	89	23	21	44	21	13	34	3	6	81	8
6/14	Seattle	5-5	W	21	23	44	20	12	32	--	22	76	15	16	31	19	20	39	--	4	70	6
6/17	at Dallas	5-6	L	16	20	36	21	14	35	--	3	71	23	16	39	19	22	41	--	10	80	-9
6/19	Indiana	6-6	W	12	26	38	17	33	50	--	11	88	21	23	44	15	18	33	--	13	77	11
6/22	Connecticut	7-6	W	23	36	59	14	14	28	--	30	87	20	12	32	13	18	31	--	1	63	24
6/25	New York	7-7	L	32	11	43	18	17	35	--	6	78	29	17	46	18	17	35	--	6	81	-3
6/27	Chicago	8-7	W	20	19	39	17	27	44	--	9	83	22	12	34	20	24	44	--	5	78	5
6/29	Seattle	9-7	W	23	11	34	31	19	50	--	30	84	14	13	27	17	13	30	--	0	57	27
7/5	at Minnesota	9-8	L	18	18	36	24	11	35	--	5	71	25	16	41	28	13	41	--	15	82	-11
7/7	at Atlanta	9-9	L	26	19	45	23	13	36	--	12	81	16	27	43	21	26	47	--	10	90	-9
7/9	at Indiana	10-9	W	21	20	41	23	16	39	--	23	80	23	9	32	19	10	29	--	9	61	19
7/12	at Las Vegas	10-10	L	21	25	46	26	30	56	--	7	102	23	22	45	31	28	59	--	9	104	-2
7/14	Phoenix	10-11	L	20	12	32	26	19	45	--	8	77	16	20	36	23	19	42	--	10	78	-1
7/16	at Seattle	10-12	L	15	16	31	13	14	27	--	5	58	14	17	31	17	19	36	--	9	67	-9
7/25	Dallas	11-12	W	10	20	30	33	23	56	--	10	86	21	15	36	24	16	40	--	12	76	10
7/27	at Connecticut	11-13	L	15	18	33	16	15	31	--	2	64	23	26	49	26	20	46	--	31	95	-31
7/29	at Atlanta	12-13	W	20	19	39	30	8	38	--	13	77	16	23	39	17	19	36	--	5	75	2
7/31	at Washington	13-13	W	30	16	46	16	6	22	--	17	68	20	14	34	21	12	33	--	1	67	1
8/1	at Chicago	14-13	W	14	23	37	15	21	36	--	8	73	15	22	37	17	12	29	--	8	66	7
8/3	at Las Vegas	14-14	L	14	11	25	25	27	52	--	2	77	27	23	50	26	25	51	--	28	101	-24
8/6	Las Vegas	14-15	L	14	24	38	16	18	34	--	7	72	16	27	43	21	14	35	--	10	78	-6
8/9	Los Angeles	15-15	W	19	14	33	23	16	39	--	19	72	14	9	23	25	11	36	--	1	59	13
8/11	Connecticut	16-15	W	14	18	32	23	19	42	--	20	74	10	16	26	18	13	31	--	2	57	17
8/13	at Washington	17-15	W	30	16	46	24	18	42	--	25	88	12	16	28	24	31	55	--	2	83	5
8/15	at Chicago	18-15	W	27	15	42	27	21	48	--	31	90	23	17	40	9	10	19	--	7	59	31
8/17	Atlanta	18-16	L	15	10	25	17	21	38	--	5	63	12	13	25	28	26	54	--	22	79	-16
8/19	Phoenix	18-17	L	31	28	59	14	18	32	--	12	91	28	19	47	21	30	51	--	9	98	-7
8/22	at Phoenix	18-18	L	15	16	31	23	18	41	--	4	72	17	24	41	26	14	40	--	20	81	-9
8/24	at Dallas	19-18	W	23	13	36	25	29	54	--	19	90	12	26	38	17	26	43	--	4	81	9
8/30	Washington	20-18	W	19	32	51	27	21	48	--	37	99	8	14	22	21	19	40	--	3	62	37
8/31	Indiana	21-18	W	25	19	44	11	20	31	--	20	75	14	18	32	16	15	31	--	1	63	12
9/2	New York	22-18	W	14	26	40	16	10	26	--	24	66	18	8	26	18	14	32	--	5	58	8
9/4	Dallas	23-18	W	21	11	32	26	26	52	--	5	84	20	21	41	21	18	39	--	13	80	4
9/6	Minnesota	23-19	L	18	18	36	16	20	36	--	7	72	16	15	31	30	17	47	--	9	78	-6
9/9	at Seattle	--	--	--	--	--	--	--	--	--	--	--	--	--	--	--	--	--	--	--	--	--
9/11	at Minnesota	--	--	--	--	--	--	--	--	--	--	--	--	--	--	--	--	--	--	--	--	--
<b>2025-26 TOTALS</b>		<b>23-19</b>	<b>--</b>	<b>818</b>	<b>825</b>	<b>1,643</b>	<b>871</b>	<b>769</b>	<b>1,640</b>	<b>11</b>	<b>--</b>	<b>3,294</b>	<b>793</b>	<b>748</b>	<b>1,541</b>	<b>866</b>	<b>803</b>	<b>1,669</b>	<b>3</b>	<b>--</b>	<b>3,213</b>	<b>81</b>
<b>AVG/GAME</b>		<b>--</b>	<b>--</b>	<b>19.5</b>	<b>19.6</b>	<b>39.1</b>	<b>20.7</b>	<b>18.3</b>	<b>39.0</b>	<b>11.0</b>	<b>13.0</b>	<b>78.4</b>	<b>18.9</b>	<b>17.8</b>	<b>36.7</b>	<b>20.6</b>	<b>19.1</b>	<b>39.7</b>	<b>3.0</b>	<b>9.7</b>	<b>76.5</b>	<b>1.9</b>

TEAM TREND	TTL	LAST GAME	TEAM TREND	TTL	LAST GAME
<4 Valkyries w/ 10+ pts	4-9	vs. IND 8/31/25	Valkyries shoot 50.0% or better	3-1	vs. IND 8/31/25
4+ Valkyries w/ 10+ pts	19-10	vs. MIN 9/6/25	Opp shoots 50.0% or better	0-3	@ CON 7/27/25
5+ Valkyries w/ 10+ pts	8-4	vs. DAL 9/4/25	Valkyries shoot 45.0% or better	9-2	vs. IND 8/31/25
6+ Valkyries w/ 10+ pts	0-1	@ LVA 7/12/25	Valkyries shoot 44.0% or below	12-17	vs. MIN 9/6/25
7+ Valkyries w/ 10+ pts	0-0		Valkyries shoot 40.0% or below	8-12	vs. MIN 9/6/25
8+ Valkyries w/ 10+ pts	0-0		Opp shoots 45.0% or better	1-11	vs. PHO 8/19/25
Valkyries no 20+ pt scorer	10-15	vs. MIN 9/6/25	Opp shoots 40.0% or below	16-5	vs. MIN 9/6/25
Opp no 20+ pt scorer	16-2	vs. NYL 9/2/25	Valkyries w/10+ 3-pointers made	13-9	vs. IND 8/31/25
2+ Valkyries w/20+ pt scorer	1-0	@ WAS 8/13/25	Opp w/10+ 3-pointers made	3-13	vs. MIN 9/6/25
2+ Opp w/20+ pt scorer	1-6	vs. MIN 9/6/25	Valkyries w/15+ 3-pointers made	2-0	@ DAL 8/24/25
3+ Valkyries w/20+ pt scorer	0-0		Opp w/15+ 3-pointers made	0-1	@ LVA 8/3/25
3+ Opp w/20+ pt scorer	0-0		Valkyries 3FG% 40.0% or better	6-2	vs. IND 8/31/25
Valkyries w/30+ pt scorer	1-0	@ WAS 8/13/25	Opp 3FG% 40.0% or better	0-8	vs. MIN 9/6/25
Opp w/30+ pt scorer	1-2	@ LVA 7/12/25	Valkyries FT% 80.0 or better	13-11	vs. DAL 9/4/25
All 5 Starters w/10+ pts	0-1	@ LVA 7/12/25	Opp FT% 80.0 or better	7-12	vs. MIN 9/6/25
Opp 5 Starters w/10+ pts	0-0		Valkyries FT% below 70.0	3-3	vs. CON 8/11/25
2+ reserves w/10+ pts	9-3	vs. DAL 9/4/25	Opp FT% below 70.0	4-2	@ CHI 8/1/25
Opp 2+ reserves w/10+ pts	2-1	@ DAL 8/24/25	Valkyries FTM >= Opp FTA	13-3	vs. WAS 8/30/25
3+ reserves w/10+ pts	1-0	vs. IND 6/19/25	Opp FTM >= Valkyries FTA	4-10	vs. MIN 9/6/25
Opp 3+ reserves w/10+ pts	0-0		Valkyries FG% >= Opp FG%	17-4	vs. DAL 9/4/25
Valkyries <20 pts. in 1st qtr	10-12	vs. MIN 9/6/25	Opp FG% >= Valkyries FG%	3-14	@ PHO 8/22/25
Opp <20 pts. in 1st qtr	14-8	vs. MIN 9/6/25	Valkyries w/30+ FTA	0-0	
Valkyries w/30+ pts in 1st qtr	2-2	vs. PHO 8/19/25	Opp w/30+ FTA	0-1	@ LVA 7/12/25
Opp w/30+ pts in 1st qtr	0-0		Valkyries w/20+ asts	12-6	vs. DAL 9/4/25
Valkyries under 50 pts 1st half	20-17	vs. MIN 9/6/25	Opp w/20+ asts	8-12	vs. DAL 9/4/25
Opp under 50 pts 1st half	23-17	vs. MIN 9/6/25	Valkyries w/25+ asts	1-1	vs. WAS 8/30/25
Valkyries 50+ pts 1st half	3-2	vs. WAS 8/30/25	Opp w/25+ asts	0-3	@ PHO 8/22/25
Opp 50+ pts 1st half	0-2	@ LVA 8/3/25	Valkyries w/30+ asts	0-0	
Valkyries 60+ pts in 1st half	0-0		Opp w/30+ asts	0-1	@ NYL 5/27/25
Opp 60+ pts in 1st half	0-0		Valkyries asts >= Opp asts	14-4	vs. DAL 9/4/25
Valkyries lead by 10+ pts	18-2	vs. NYL 9/2/25	Opp asts >= Valkyries asts	8-13	vs. MIN 9/6/25

Opp leads by 10+ pts	4-12	vs. DAL 9/4/25	Valkyries w/12 or fewer TOs	10-10	vs. MIN 9/6/25
Games decided by 10+ points	11-7	vs. IND 8/31/25	Opp w/12 or fewer TOs	10-11	vs. MIN 9/6/25
Games decided by 4-9 points	9-9	vs. MIN 9/6/25	Valkyries w/20+ TOs	0-4	@ CON 7/27/25
Games decided by 3 or less points	3-3	@ WAS 7/31/25	Opp w/20+ TOs	0-0	
Both teams score 100+ pts	0-1	@ LVA 7/12/25	Valkyries TO >= Opp TO	11-12	vs. MIN 9/6/25
Both teams under 100 pts	23-17	vs. MIN 9/6/25	Opp TO >= Valkyries TO	10-5	vs. WAS 8/30/25
Valkyries score under 100 pts	23-18	vs. MIN 9/6/25	Valkyries w/50+ REB	5-1	@ IND 7/9/25
Opp scores under 100 pts	23-17	vs. MIN 9/6/25	Opp w/50+ REB	2-4	vs. PHO 8/19/25
Valkyries score 100+ pts	0-1	@ LVA 7/12/25	Valkyries REB >= Opp REB	18-7	vs. MIN 9/6/25
Opp scores 100+ pts	0-2	@ LVA 8/3/25	Opp REB >= Valkyries REB	5-11	vs. PHO 8/19/25
Valkyries score 110+ pts	0-0		Valkyries w/10+ more REB than Opp	5-1	@ DAL 8/24/25
Opp scores 110+ pts	0-0		Opp w/10+ more REB than GSV	0-5	vs. PHO 8/19/25
Valkyries tied or lead after the 3rd qtr	20-3	vs. NYL 9/2/25	Valkyries w/10+ stls	4-3	@ CHI 8/15/25
Valkyries tied or lead at halftime	19-9	vs. MIN 9/6/25	Opp w/10+ stls	4-7	vs. DAL 9/4/25
Valkyries tied or lead after 1st qtr	15-8	vs. MIN 9/6/25	2+ Valkyries w/double-double	2-0	@ LAS 6/9/25
Valkyries trailing after the 3rd qtr	3-16	vs. MIN 9/6/25	2+ Opp w/double-double	0-1	vs. PHO 7/14/25
Valkyries trailing at halftime	4-10	vs. DAL 9/4/25	3+ Valkyries w/double-double	1-0	vs. LVA 6/7/25
Valkyries trailing after 1st qtr	8-11	vs. NYL 9/2/25	3+ Opp w/double-double	0-0	
1st game Back-to-Back	2-0	vs. WAS 8/30/25	Valkyries PITP >= Opp PITP	14-7	vs. MIN 9/6/25
2nd game Back-to-Back	2-0	vs. IND 8/31/25	Opp PITP >= Valkyries PITP	8-11	vs. DAL 9/4/25
1st game after a win	14-9	vs. MIN 9/6/25	Valkyries 2CP >= Opp 2CP	12-6	vs. MIN 9/6/25
1st game after a loss	9-9	@ DAL 8/24/25	Opp 2CP >= Valkyries 2CP	8-13	vs. DAL 9/4/25
On Monday	2-2	vs. CON 8/11/25	Valkyries FB Pts >= Opp FB Pts	9-4	vs. IND 8/31/25
On Tuesday	2-3	vs. NYL 9/2/25	Opp FB Pts >= Valkyries FB Pts	12-13	vs. MIN 9/6/25
On Wednesday	3-3	@ WAS 8/13/25	+3 Blocks	13-9	vs. DAL 9/4/25
On Thursday	3-2	vs. DAL 9/4/25	+5 Blocks	4-3	vs. DAL 9/4/25
On Friday	5-2	@ PHO 8/22/25			
On Saturday	4-3	vs. MIN 9/6/25			
On Sunday	4-4	vs. IND 8/31/25			
May	2-3	@ NYL 5/29/25			
June	7-4	vs. SEA 6/29/25			
July	4-6	@ WAS 7/31/25			
August	8-5	vs. IND 8/31/25			
September	2-1	vs. MIN 9/6/25			

	GOLDEN STATE VALKYRIES		OPPONENTS	
<b>Points</b>	30	Burton at WAS 8/13	37	Plum vs. LAS 5/16
<b>Points in a Quarter</b>	14	Martin (4th) vs. NYL 6/25	17	Plum (3rd) vs. LAS 5/16
	14	Thornton (2nd) vs. CON 6/22		
	14	Martin (2nd) vs. MIN 6/1		
	14	Burton (4th) vs. WAS 5/21		
<b>Points in a Half</b>	21	Burton (2nd) at DAL 8/24	26	Plum (2nd) vs. LAS 5/16
<b>Field Goals</b>	10	Burton at WAS 8/13	12	Wilson at LVA 7/12
<b>Field Goal Attempts</b>	19	Martin vs. PHO 8/19	21	Ionescu at NYL 5/29
	19	Salaün at NYL 5/29		
<b>Field Goal Percentage</b>	1.000	Leite (5-5) vs. WAS 8/30	1.000	Mack (7-7) vs. PHO 8/19
	1.000	Fágbénié (5-5) at NYL 5/27		
<b>3-PT Field Goal</b>	6	Zandalasini at WAS 8/13	7	Loyd at LVA 8/3
	6	Burton at WAS 8/13		
<b>3-PT FG Attempts</b>	16	Martin vs. PHO 8/19	15	Ionescu at NYL 5/29
<b>3-PT FG Percentage</b>	1.000	Rupert (4-4) at CHI 8/15	1.000	Engstler (3-3) at WAS 8/13
<b>Free Throws</b>	10	Burton vs. PHO 8/19	15	Stewart at NYL 5/29
<b>Free Throw Attempts</b>	11	Burton at PHO 6/5	19	Stewart at NYL 5/29
<b>Free Throw Percentage</b>	1.000	Burton (10-10) vs. PHO 8/19	1.000	Wilson (11-11) vs. LVA 8/6
			1.000	Young (11-11) at LVA 7/12
			1.000	Plum (11-11) vs. LAS 5/16
<b>Offensive Rebounds</b>	8	Fágbénié at LAS 6/9	7	Reese vs. CHI 6/27
<b>Defensive Rebounds</b>	10	Thornton vs. SEA 6/14	11	Morrow vs. CON 8/11
			11	Wilson at LVA 7/12
			11	Reese vs. CHI 6/27
<b>Total Rebounds</b>	13	Fágbénié at LAS 6/9	18	Reese vs. CHI 6/27
	13	Salaün at NYL 5/29		
<b>Assists</b>	14	Burton vs. PHO 8/19	16	Thomas at PHO 8/22
<b>Steals</b>	5	Burton at LAS 5/23	6	Lacan at CON 7/27
<b>Blocks</b>	4	Burton at DAL 8/24	5	Nelson-Ododa vs. CON 6/22
	4	Amihere vs. IND 6/19		
	4	Fágbénié at LAS 6/9		
<b>Minutes</b>	38:39	Salaün at LAS 6/9	40:49	Plum at LAS 6/9
<b>Points in Paint</b>	14	Fágbénié vs. SEA 6/14	22	Wilson at LVA 7/12
<b>Second Chance Points</b>	8	Hayes at ATL 7/29	10	Young at LVA 8/3
	8	Fágbénié vs. LAS 5/16		
<b>Fast Break Points</b>	11	Thornton vs. LVA 6/7	9	Hamby at LAS 6/9
			9	Plum vs. LAS 5/16

VALKYRIES HIGHS	VALKYRIES LOWS	CATEGORY	OPPONENTS HIGHS	OPPONENTS LOWS
102 at LVA 7/12	58 at SEA 7/16	<b>Points</b>	104 at LVA 7/12	57 (2) vs. CON 8/11
32 vs. NYL 6/25	10 (2) vs. DAL 7/25	<b>Points/1st Qtr.</b>	29 vs. NYL 6/25	8 vs. WAS 8/30
36 vs. CON 6/22	10 vs. ATL 8/17	<b>Points/2nd Qtr.</b>	27 (2) vs. LVA 8/6	8 vs. NYL 9/2
59 (2) vs. CON 6/22	25 (2) vs. ATL 8/17	<b>Points/1st Half</b>	51 vs. MIN 6/1	22 vs. WAS 8/30
33 vs. DAL 7/25	8 vs. MIN 6/1	<b>Points/3rd Qtr.</b>	31 at LVA 7/12	9 at CHI 8/15
33 vs. IND 6/19	6 at WAS 7/31	<b>Points/4th Qtr.</b>	31 at WAS 8/13	10 (2) at CHI 8/15
56 (2) vs. DAL 7/25	22 at WAS 7/31	<b>Points/2nd Half</b>	59 at LVA 7/12	19 at CHI 8/15
35 at LVA 7/12	19 at SEA 7/16	<b>Field Goals</b>	37 at NYL 5/27	18 vs. NYL 9/2
80 at LAS 6/9	55 vs. IND 8/31	<b>Field Goal Attempts</b>	76 at LVA 8/3	57 (2) vs. NYL 9/2
.550 vs. WAS 8/30	.317 at SEA 7/16	<b>Field Goal Percentage</b>	.548 at LVA 7/12	.270 vs. SEA 6/29
16 at DAL 8/24	3 vs. SEA 6/14	<b>3-PT Field Goal</b>	18 at LVA 8/3	5 (3) vs. DAL 9/4
38 at DAL 8/24	18 vs. SEA 6/14	<b>3-PT FG Attempts</b>	40 at LVA 8/3	19 vs. LAS 5/16
.632 vs. IND 8/31	.156 at LAS 6/9	<b>3-PT FG Percentage</b>	.450 at LVA 8/3	.185 vs. LVA 8/6
23 (2) vs. DAL 7/25	6 (3) vs. LAS 8/9	<b>Free Throws</b>	30 at LVA 7/12	6 (2) at CHI 8/15
29 (2) vs. CHI 6/27	8 (2) at ATL 7/29	<b>Free Throw Attempts</b>	35 at LVA 7/12	6 at CHI 8/15
1.000 (2) at DAL 8/24	.600 vs. LAS 8/9	<b>Free Throw Percentage</b>	1.000 at CHI 8/15	.538 at NYL 5/27
19 vs. CON 6/22	1 vs. WAS 8/30	<b>Offensive Rebounds</b>	18 at LVA 8/3	3 (4) vs. WAS 8/30
36 at IND 7/9	16 at CON 7/27	<b>Defensive Rebounds</b>	36 vs. WAS 5/21	17 (2) vs. WAS 8/30
51 vs. CON 6/22	24 at CON 7/27	<b>Total Rebounds</b>	46 at LVA 8/3	20 (2) vs. WAS 8/30
25 (2) vs. WAS 8/30	9 vs. LVA 8/6	<b>Assists</b>	30 at NYL 5/27	11 vs. LVA 6/7
13 at LAS 5/23	2 (3) at DAL 8/24	<b>Steals</b>	16 vs. LAS 5/16	1 vs. PHO 8/19
16 (42) at SEA 7/16	16 (42) at SEA 7/16	<b>Team Fouls</b>	15 (42) vs. DAL 7/25	15 (42) vs. DAL 7/25
25 (2) at LVA 7/12	10 vs. SEA 6/29	<b>Personal Fouls</b>	24 vs. DAL 7/25	11 at ATL 7/29
22 at CON 7/27	3 vs. PHO 8/19	<b>Turnovers</b>	17 (3) at PHO 6/5	3 at DAL 8/24
7 (2) vs. DAL 9/4	0 (3) at WAS 8/13	<b>Blocks</b>	10 vs. CON 6/22	1 (2) vs. IND 8/31
46 (3) vs. SEA 6/29	10 vs. PHO 7/14	<b>Points in Paint</b>	48 at LVA 7/12	12 vs. CON 6/22
27 at LVA 8/3	0 at SEA 7/16	<b>Second Chance Points</b>	28 at LVA 8/3	3 vs. LAS 5/16
22 vs. LVA 6/7	0 (2) vs. CON 8/11	<b>Fast Break Points</b>	25 at LAS 6/9	4 (4) vs. IND 8/31
37 vs. WAS 8/30	0 at NYL 5/27	<b>Biggest Lead</b>	33 at NYL 5/27	0 (2) vs. SEA 6/29
45 vs. IND 6/19	7 vs. MIN 9/6	<b>Bench Points</b>	50 at LVA 8/3	2 vs. LAS 5/16
22 at LAS 5/23	3 at WAS 7/31	<b>Points Off Turnovers</b>	34 at CON 7/27	4 vs. PHO 8/19

VALKYRIES RECORD WHEN...	OVERALL	HOME	ROAD
Outrebounding opponent	18-7	12-4	6-3
Outrebounded by opponent	5-11	2-3	3-8
Tied in Rebounding	0-1	0-1	0-0
Shooting better than opponent	19-5	11-2	8-3
Shooting worse than opponent	3-14	2-6	1-8
Shooting same than opponent	1-0	1-0	0-0
More FTM than opponent	16-8	9-2	7-6
Less FTM than opponent	6-10	4-5	2-5
Same FTM than opponent	1-1	1-1	0-0
More 3FGM than opponent	15-5	9-3	6-2
Less 3FGM than opponent	4-10	3-4	1-6
Same 3FGM than opponent	4-4	2-1	2-3
More assists than opponent	14-4	11-1	3-3
Less assists than opponent	8-13	2-6	6-7
Same assists than opponent	1-2	1-1	0-1
More turnovers than opponent	11-12	6-4	5-8
Less turnovers than opponent	10-5	7-3	3-2
Same turnovers than opponent	2-2	1-1	1-1
Bench outscores opponent bench	16-10	9-3	7-7
Opponent bench outscores GSV	6-9	4-5	2-4
Bench scoring equal	1-0	1-0	0-0
Scoring less than 80 points	9-16	6-7	3-9
Scoring between 80-89 points	10-1	6-0	4-1
Scoring between 90-99 points	4-1	2-1	2-0
Scoring between 100-109	0-1	0-0	0-1
Scoring 110 or more points	0-0	0-0	0-0
Opponent scores less than 80	19-5	13-4	6-1
Opponent scores between 80-89	4-8	1-3	3-5
Opponent scores between 90-99	0-4	0-1	0-3
Opponent scores between 100-109	0-2	0-0	0-2
Opponent scores 110 or more	0-0	0-0	0-0

	POINTS			REB	AST	BLK	STL	DD	TD
	10+	20+	30+						
Laeticia Amihere	7	--	--	1	--	1	2	1	--
Chloe Bibby	2	--	--	--	--	--	--	--	--
Monique Billings	6	--	--	1	--	1	1	1	--
Veronica Burton	27	6	1	--	7	1	5	4	--
Kaila Charles	6	--	--	--	--	--	2	--	--
Kaitlyn Chen	1	--	--	--	--	--	--	--	--
Temi Fágbenlé	9	--	--	2	--	1	2	2	--
Bree Hall	--	--	--	--	--	--	--	--	--
Tiffany Hayes	17	2	--	--	--	--	--	--	--
Elizabeth Kitley	--	--	--	--	--	--	--	--	--
Carla Leite	12	--	--	--	--	--	1	--	--
Kyara Linskens	--	--	--	--	--	--	--	--	--
Kate Martin	12	1	--	--	--	--	--	--	--
Aerial Powers	--	--	--	--	--	--	--	--	--
Iliana Rupert	10	1	--	--	--	1	--	--	--
Janelle Salaün	21	2	--	1	--	--	1	1	--
Stephanie Talbot	2	--	--	1	--	--	1	--	--
Kayla Thornton	18	4	--	5	--	--	3	5	--
Julie Vanloo	2	--	--	--	--	--	--	--	--
Cecilia Zandalasini	11	2	--	--	--	--	2	--	--

	NUMBER OF TIMES LEADING TEAM IN... (INCLUDES TIES)					
	PTS	REB	AST	BLK	STL	MIN
Laeticia Amihere	--	9	--	8	4	--
Chloe Bibby	--	--	--	--	1	--
Monique Billings	2	7	--	14	6	--
Veronica Burton	12	8	28	17	12	11
Kaila Charles	1	3	--	4	5	--
Kaitlyn Chen	--	--	1	3	2	--
Temi Fágbenlé	1	5	3	14	9	2
Bree Hall	--	--	--	--	--	--
Tiffany Hayes	7	4	6	7	5	5
Elizabeth Kitley	--	--	--	--	--	--
Carla Leite	1	--	3	5	5	1
Kyara Linskens	--	--	--	2	--	--
Kate Martin	2	--	--	6	7	1
Aerial Powers	--	--	--	--	--	--
Iliana Rupert	4	2	1	6	4	--
Janelle Salaün	7	10	2	6	5	11
Stephanie Talbot	--	1	2	2	2	--
Kayla Thornton	6	11	--	7	10	11
Julie Vanloo	--	--	4	--	--	--
Cecilia Zandalasini	4	2	1	5	4	--

#### GAMES MISSED DUE TO INJURIES/SUSPENSIONS

NAME	INJURY/ILLNESS	DATES OUT	GAMES MISSED
Monique Billings	Right Ankle	5/23; 8/1 through 8/3/25; 8/17 through 8/31/25	9
	Right Foot	5/27 through 5/29/25; 8/6 through 8/11/25	5
	Rt Ankle	7/25	1
	Left Ankle	7/27; 7/31	2
	OUT-Right Ankle	8/13	1
Temi Fágbenlé	Nkle	8/15	1
	Inactive - Rest	6/25 through 6/27/25	2
Tiffany Hayes	Nose	5/23 through 5/27/25; 6/5 through 6/14/25	6
	Left Leg	8/1 through 8/3/25	2
	Inactive - Rest	8/19	1
	Left Knee	8/24; 8/31 through 9/4/25	4
	Illness/Left Knee	8/30	1
Carla Leite	L. Knee	9/6	1
	Back	6/25 through 7/5/25	4
Iliana Rupert	Right Ankle	8/24	1
	Head	8/19	1
Janelle Salaün	Inactive - Rest	5/16	1
Stephanie Talbot	Right Quad	5/16	1
Kayla Thornton	Lower Leg	7/25	1
	Left Leg	7/27	1
	Right Knee	7/29 through 8/11/25; 8/17 through 8/19/25; 8/24 through 9/4/25	14
	OUT-Right Knee	8/13	1
	Knee	8/15	1
Cecilia Zandalasini	R. Knee	9/6	1
	Right Foot	5/16 through 5/29/25	5
	Left Foot	7/31 through 8/3/25	3
	Left Calf	8/19; 8/24 through 9/4/25	6
	L. Calf	9/6	1
<b>TOTAL GAMES MISSED</b>			<b>78</b>

## HEAD COACH NATALIE NAKASE

**SCHOOL:** UCLA - '03    **EXPERIENCE:** 1st Season



Natalie Nakase enters her first season as head coach of the Golden State Valkyries. Nakase takes the helm of the Valkyries following over 16 years of coaching professional basketball, including 10 seasons in the NBA with the Los Angeles Clippers, and three seasons as first assistant coach with the Las Vegas Aces. Nakase will report to Valkyries General Manager Ohemaa Nyanin, and began her tenure with the team on October 21.

Nakase is the first Asian American head coach in the WNBA, and was the first female coach to sit on an NBA team's bench when she was an assistant coach for the Los Angeles Clippers during the 2014 summer league.

Nakase spent the last three years (2022-2024) as first assistant coach with the Aces, where she played a critical role guiding the team to back-to-back WNBA Championships (2022, 2023). During her tenure, Las Vegas topped the WNBA's defensive rating charts in

2023, with a rating of 97.7. She assisted with in-game adjustments, substitution rotations, end of game decisions, time out strategies, head coach's challenge usages, clock management and organizing the team on both ends of the court. Nakase also served as the Aces top scout for college and international athletes. With Nakase on the sideline, the Aces went 87-29 over the last three seasons, including a 19-6 mark in the playoffs.

Prior to her time with the Aces, Nakase spent 10 seasons in various capacities with the Clippers, most recently as an assistant coach and player development coach in a dual role with the NBA team and their G League affiliate, the Agua Caliente Clippers. There, she assisted then-Head Coach Tyronn Lue with in-game planning on offense and defense, and assisted with player development and defensive scouting reports.

Nakase got her coaching start in 2008 with the Women's Professional Basketball German League, serving as head coach for the Wolfenbuttel Wildcats for two seasons (2008-10). She then served as an assistant coach for the Tokyo Apache for one season (2010-11) in the Men's Professional Basketball Japan League, followed by acting as head coach for the Saitama Broncos from 2011-12, making her the first woman to serve as head coach in the league.

Nakase was a walk-on women's basketball player at University of California, Los Angeles (UCLA) from 1998-2003, where she played her way into the starting lineup and served as team captain for three seasons. A native of Los Angeles, she graduated with her bachelor of science in psychology. After graduation, she played professionally for two years in the National Women's Basketball League (NWBL) with the San Jose Spiders and San Diego Siege. Nakase also competed for one season in Germany, where she suffered a career-ending knee injury in 2008.

### CAREER ACCOLADES AND HIGHLIGHTS

- First female coach to sit on an NBA team's bench (assistant coach for the Los Angeles Clippers during the 2014 summer league)
- Two-time WNBA Champion as an assistant coach (2022 & 2023 with the Las Vegas Aces)
- First Asian American head coach in the WNBA
- WNBA Coach of the Month - June 2025
- Under Nakase's tutelage, the Valkyres are the fourth-fastest WNBA expansion team to reach five wins (excluding the 1997 season):

ORL	1999	5	3	(8 Games)
DET	1998	5	4	(9 Games)
MIN	1999	5	4	(9 Games)
<b>GSV</b>	<b>2025</b>	<b>5</b>	<b>5</b>	<b>(10 Games)</b>

- Golden State is the third WNBA expansion team all-time to reach 10 wins in 20 or fewer games (1999 Minnesota Lynx - 16 games; 1998 Detroit Shock - 19 games; 2025 Golden State - 19 games).





# LAETICIA AMIHERE

# 3

**HT:** 6-3  
**DOB:** 7/10/2001  
**POSITION:** Forward  
**ACQUIRED:** Free Agent

**COLLEGE:** South Carolina  
**EXPERIENCE:** 2 Seasons

### QUICK FACTS

- Signed a rest-of-season contract with Golden State on June 8
- Averaged 17.4 minutes, 12.5 points and 1.5 rebounds per game on 60.0 percent (9-15) shooting in two preseason games this season for the Valkyries
- Led South Carolina to three SEC Regular-Season championships, three SEC Tournament titles and three NCAA Final Four showings, including the 2022 National Championship title
- 3x SEC Academic Honor Roll (2020, 2021, 2022); 3x SEC Women's Basketball Community Service Team (2020, 2021, 2022)
- Was first Gamecock women's basketball player to compete in an Olympics during her college career (Canada - 2020 Games).
- Played for Perth of the WNBL (Australia) in 2024-25 and was named All-WNBL First Team
- Represented Canada at the 2022 FIBA World Cup, 2020 Tokyo Olympic Games, 2021 FIBA AmeriCup, 2020 FIBA Olympic Qualifying Tournament, 2017 FIBA U19 World Cup (bronze medal), 2017 FIBA U19 World Cup (All-Tournament Team), 2016 FIBA U17 World Cup, 2015 FIBA U16 Americas Cup (gold medal)
- First player of Ghanaian-Ivorian descent drafted into the WNBA

## LAETICIA AMIHERE - WNBA REGULAR SEASON STATISTICS

SEASON	TEAM	GP	GS	MIN	FG	FGA	FG%	3PM	3PA	3P%	FT	FTA	FT%	OR	DR	TOT	A	ST	TO	BS	PTS	PPG
2023-24	ATL	21	0	147	17	42	.405	0	1	.000	22	41	.537	5	15	20	4	5	11	9	56	2.7
2024-25	ATL	17	0	83	7	26	.269	0	0	.000	5	17	.294	12	15	27	3	2	8	3	19	1.1
2025-26	GSV	28	0	380	51	113	.451	2	20	.100	49	63	.778	35	89	124	27	17	30	13	153	5.5
<b>TOTALS</b>		<b>66</b>	<b>0</b>	<b>609</b>	<b>75</b>	<b>181</b>	<b>.414</b>	<b>2</b>	<b>21</b>	<b>.095</b>	<b>76</b>	<b>121</b>	<b>.628</b>	<b>52</b>	<b>119</b>	<b>171</b>	<b>34</b>	<b>24</b>	<b>49</b>	<b>25</b>	<b>228</b>	<b>3.5</b>
<b>AVERAGE</b>		<b>--</b>	<b>--</b>	<b>9.2</b>	<b>1.1</b>	<b>2.7</b>	<b>--</b>	<b>0.0</b>	<b>0.3</b>	<b>--</b>	<b>1.2</b>	<b>1.8</b>	<b>--</b>	<b>0.8</b>	<b>1.8</b>	<b>2.6</b>	<b>0.5</b>	<b>0.4</b>	<b>0.7</b>	<b>0.4</b>	<b>3.5</b>	<b>--</b>

REG CAREER HIGHS		2025-26 REG HIGHS	
PTS	15 vs. SEA 6/29/25	PTS	15 vs. SEA 6/29/25
FGM	6 2 times (vs. SEA, 6/29/25)	FGM	6 2 times (vs. SEA, 6/29/25)
FGA	9 4 times (@ PHO, 8/22/25)	FGA	9 3 times (@ PHO, 8/22/25)
3FGM	1 2 times (vs. WAS, 8/30/25)	3FGM	1 2 times (vs. WAS, 8/30/25)
3FGA	4 at WAS 7/31/25	3FGA	4 at WAS 7/31/25
FTM	8 at LVA 8/3/25	FTM	8 at LVA 8/3/25
FTA	12 at WAS 6/28/23	FTA	8 2 times (@ LVA, 8/3/25)
OREB	6 at CON 7/7/24	OREB	4 3 times (vs. PHO, 8/19/25)
DREB	8 vs. CON 6/22/25	DREB	8 vs. CON 6/22/25
TREB	12 vs. CON 6/22/25	TREB	12 vs. CON 6/22/25
ASTS	4 at ATL 7/7/25	ASTS	4 at ATL 7/7/25
STLS	4 2 times (vs. WAS, 8/30/25)	STLS	4 2 times (vs. WAS, 8/30/25)
BLKS	4 vs. IND 6/19/25	BLKS	4 vs. IND 6/19/25
MINS	24 at DAL 6/17/25	MINS	24 at DAL 6/17/25

## 2025-26 GAME-BY-GAME REGULAR SEASON STATISTICS ( GSV )

DATE	OPP	P/S	MIN	FG	FGA	FG%	3PM	3PA	3P%	FT	FTA	FT%	OR	DR	TOT	A	ST	BS	TO	PF	+/-	PTS	W/L	SCORE
06/09/25	at LAS																							89-81 (OT)
06/14/25	SEA	P	14:39	1	2	.500	0	0	.000	0	0	.000	0	1	1	0	0	0	2	2	-3	2	W	76-70
06/17/25	at DAL	P	24:15	6	7	.857	0	0	.000	2	3	.667	3	3	6	2	0	1	2	4	-17	14	L	71-80
06/19/25	IND	P	19:03	3	6	.500	0	0	.000	4	8	.500	1	2	3	3	1	4	0	2	13	10	W	88-77
06/22/25	CON	P	23:22	3	9	.333	0	2	.000	4	5	.800	4	8	12	1	1	1	6	4	6	10	W	87-63
06/25/25	NYL	P	12:38	2	7	.286	0	1	.000	2	2	1.000	2	3	5	0	1	1	1	0	0	6	L	78-81
06/27/25	CHI	P	16:52	1	2	.500	0	0	.000	1	2	.500	2	7	9	3	0	0	1	2	1	3	W	83-78
06/29/25	SEA	P	17:36	6	8	.750	0	1	.000	3	3	1.000	1	7	8	1	1	1	2	1	10	15	W	84-57
07/05/25	at MIN																							71-82
07/07/25	at ATL	P	16:34	2	2	1.000	0	0	.000	0	0	.000	0	6	6	4	0	0	2	2	6	4	L	81-90
07/09/25	at IND	P	9:36	2	3	.667	0	0	.000	0	0	.000	1	5	6	2	0	0	2	3	8	4	W	80-61
07/12/25	at LVA	P	03:21	0	0	.000	0	0	.000	2	2	1.000	0	0	0	0	0	0	0	1	-5	2	L	102-104
07/14/25	PHO	P	8:40	1	2	.500	0	0	.000	0	0	.000	1	1	2	1	1	0	0	0	-6	2	L	77-78
07/16/25	at SEA	P	09:21	1	2	.500	0	1	.000	2	4	.500	1	3	4	1	0	0	0	0	0	4	L	58-67
07/25/25	DAL	P	12:33	1	6	.167	0	1	.000	2	2	1.000	1	1	2	0	1	0	1	0	-10	4	W	86-76
07/27/25	at CON	P	15:51	1	7	.143	0	1	.000	2	3	.667	1	0	1	2	4	1	3	3	-9	4	L	64-95
07/29/25	at ATL	P	14:32	3	6	.500	0	2	.000	0	0	.000	0	4	4	1	1	0	0	2	11	6	W	77-75
07/31/25	at WAS	P	13:21	1	6	.167	1	4	.250	5	6	.833	1	4	5	1	0	0	1	3	6	8	W	68-67
08/01/25	at CHI	P	9:01	0	0	.000	0	0	.000	2	2	1.000	0	2	2	0	0	0	2	1	0	2	W	73-66
08/03/25	at LVA	P	21:54	3	6	.500	0	2	.000	8	8	1.000	4	5	9	3	0	0	1	1	-11	14	L	77-101
08/06/25	LVA																							72-78
08/09/25	LAS	P	1:34	0	0	.000	0	0	.000	0	0	.000	1	0	1	0	0	0	1	0	-4	0	W	72-59
08/11/25	CON	P	1:58	0	0	.000	0	0	.000	0	0	.000	0	2	2	0	0	0	0	0	-3	0	W	74-57
08/13/25	at WAS																							88-83
08/15/25	at CHI	P	2:52	0	0	.000	0	0	.000	0	0	.000	0	0	0	0	0	0	0	0	2	0	W	90-59
08/17/25	ATL	P	13:42	3	4	.750	0	0	.000	1	2	.500	1	4	5	1	1	2	1	0	-7	7	L	63-79
08/19/25	PHO	P	23:10	5	9	.556	0	1	.000	1	2	.500	4	3	7	0	0	1	0	2	2	11	L	91-98
08/22/25	at PHO	P	22:26	1	9	.111	0	2	.000	4	5	.800	3	5	8	0	0	0	0	1	-12	6	L	72-81
08/24/25	at DAL	P	7:17	0	0	.000	0	0	.000	0	0	.000	0	0	0	0	0	1	0	0	-8	0	W	90-81
08/30/25	WAS	P	23:44	4	7	.571	1	2	.500	2	2	1.000	0	6	6	1	4	0	0	0	17	11	W	99-62
08/31/25	IND	P	9:46	1	3	.333	0	0	.000	2	2	1.000	1	4	5	0	0	0	1	0	-3	4	W	75-63
09/02/25	NYL																							66-58
09/04/25	DAL	P	10:10	0	0	.000	0	0	.000	0	0	.000	2	3	5	0	1	0	1	2	8	0	W	84-80
09/06/25	MIN																							72-78
2025	TTL	28-0	380	51	113	.451	2	20	.100	49	63	.778	35	89	124	27	17	13	30	36	-8	153	20-14	
2025	AVG	--	13.6	1.8	4.0	--	0.1	0.7	--	1.8	2.2	--	1.2	3.2	4.4	1.0	0.6	0.5	1.1	1.3	-0.3	5.5	--	--

No



# MONIQUE BILLINGS

# 25

**HT:** 6-4  
**DOB:** 5/2/1996  
**POSITION:** Forward  
**ACQUIRED:** Expansion Draft

**COLLEGE:** UCLA  
**EXPERIENCE:** 7 Seasons

### QUICK FACTS

- Has appeared in over 230 games and recorded over 4,500 minutes across seven+ WNBA seasons (Atlanta, Dallas, Phoenix and Golden State)
- Ranked fourth in the league with 58 total offensive rebounds and 2.6 offensive boards per game, while her 187 total and 8.5 rebounds per game both ranked seventh in the league in 2020
- Two-time All-Pac-12 and two-time All-Defensive Team Honoree by coaches and media with UCLA
- Ranks first in UCLA history with 228 blocks, and became only the third player in UCLA history and the 14th in the Pac-12 to score over 1,500 points and grab over 1,000 rebounds
- UCLA's all-time leader in games played with 141, also ranks second in school history with 1,159 rebounds and 677 free throws attempted, is fourth in UCLA history with 435 free throws made, and 11th in career scoring with 1,761 points
- Played for the Guangdong Vermilion Birds of the WCBA (China) in 2024-25, appearing in five games and averaging 12.0 points, 5.4 rebounds and 1.2 assists while shooting 57.1 percent from the field

## MONIQUE BILLINGS - WNBA REGULAR SEASON STATISTICS

SEASON	TEAM	GP	GS	MIN	FG	FGA	FG%	3PM	3PA	3P%	FT	FTA	FT%	OR	DR	TOT	A	ST	TO	BS	PTS	PPG
2018-19	ATL	32	0	353	41	93	.441	0	0	.000	24	32	.750	37	51	88	12	14	14	1	106	3.3
2019-20	ATL	29	2	553	56	144	.389	1	1	1.000	47	60	.783	61	140	201	16	17	45	12	160	5.5
2020-21	ATL	22	16	596	68	170	.400	0	0	.000	51	67	.761	58	129	187	27	24	42	18	187	8.5
2021-22	ATL	31	9	739	100	202	.495	0	2	.000	52	77	.675	88	112	200	32	37	44	32	252	8.1
2022-23	ATL	23	8	401	55	117	.470	0	1	.000	39	51	.765	45	101	146	26	19	31	8	149	6.5
2023-24	ATL	39	9	653	68	167	.407	0	4	.000	51	61	.836	53	141	194	30	16	38	12	187	4.8
2024-25	DAL	24	12	609	84	177	.475	1	7	.143	41	51	.804	45	114	159	46	15	51	13	210	8.8
Went from DAL to PHO.																						
2024-25	PHO	13	2	235	23	53	.434	2	7	.286	16	20	.800	20	34	54	7	12	14	6	64	4.9
2024-25	TOT	37	14	842	107	230	.465	3	14	.214	57	71	.803	65	148	213	53	27	65	19	274	7.4
2025-26	GSV	24	8	434	68	144	.472	9	34	.265	34	51	.667	35	75	110	12	14	20	20	179	7.5
<b>TOTALS</b>		<b>237</b>	<b>66</b>	<b>4,572</b>	<b>563</b>	<b>1,267</b>	<b>.444</b>	<b>13</b>	<b>56</b>	<b>.232</b>	<b>355</b>	<b>470</b>	<b>.755</b>	<b>442</b>	<b>897</b>	<b>1,339</b>	<b>208</b>	<b>168</b>	<b>299</b>	<b>122</b>	<b>1,494</b>	<b>6.3</b>
<b>AVERAGE</b>		--	--	19.3	2.4	5.3	--	0.1	0.2	--	1.5	2.0	--	1.9	3.8	5.6	0.9	0.7	1.3	0.5	6.3	--

	REG CAREER HIGHS
PTS	30 vs. DAL 7/26/20
FGM	10 vs. DAL 7/26/20
FGA	15 at ATL 5/21/24
3FGM	2 at DAL 6/17/25
3FGA	4 2 times (vs. NYL, 9/2/25)
FTM	10 vs. DAL 7/26/20
FTA	12 vs. DAL 7/26/20
OREB	9 vs. LAS 7/14/19
DREB	12 2 times (vs. SEA, 9/6/23)
TREB	16 vs. LAS 7/14/19
ASTS	9 at MIN 6/17/24
STLS	4 vs. NYL 6/26/21
BLKS	4 3 times (@ PHO, 5/25/24)
MINS	47 vs. PHO 6/9/24

	2025-26 REG HIGHS
PTS	19 at ATL 7/7/25
FGM	7 2 times (@ ATL, 7/7/25)
FGA	13 at DAL 6/17/25
3FGM	2 at DAL 6/17/25
3FGA	4 2 times (vs. NYL, 9/2/25)
FTM	4 at ATL 7/7/25
FTA	6 at DAL 6/17/25
OREB	4 at NYL 5/29/25
DREB	9 vs. LVA 6/7/25
TREB	11 vs. LVA 6/7/25
ASTS	3 vs. DAL 9/4/25
STLS	3 vs. SEA 6/14/25
BLKS	3 vs. DAL 9/4/25
MINS	34 at DAL 6/17/25

## 2025-26 GAME-BY-GAME REGULAR SEASON STATISTICS ( GSV )

DATE	OPP	P/S	MIN	FG	FGA	FG%	3PM	3PA	3P%	FT	FTA	FT%	OR	DR	TOT	A	ST	BS	TO	PF	+/-	PTS	W/L	SCORE
05/16/25	LAS	P	23:33	2	7	.286	1	4	.250	2	2	1.000	1	7	8	0	0	1	2	1	-8	7	L	67-84
05/21/25	WAS	P	23:33	3	7	.429	0	3	.000	1	3	.333	2	1	3	1	1	0	0	2	-6	7	W	76-74
05/23/25	at LAS												Inactive - Injury										W	82-73
05/27/25	at NYL												DND - Injury										L	67-95
05/29/25	at NYL	P	20:20	4	9	.444	0	2	.000	2	3	.667	4	3	7	2	0	0	0	1	0	10	L	77-82
06/01/25	MIN	P	15:22	2	5	.400	0	0	.000	3	4	.750	3	3	6	0	0	1	1	1	-12	7	L	75-86
06/05/25	at PHO	P	1:57	0	0	.000	0	0	.000	0	0	.000	0	0	0	1	0	0	0	0	-6	0	L	77-86
06/07/25	LVA	P	25:18	5	9	.556	1	3	.333	3	4	.750	2	9	11	0	2	2	1	3	9	14	W	95-68
06/09/25	at LAS	P	16:59	5	9	.556	0	0	.000	0	0	.000	2	2	4	0	0	1	1	1	-6	10	W	89-81 (OT)
06/14/25	SEA	P	12:42	2	3	.667	0	0	.000	1	2	.500	1	3	4	0	3	1	1	3	3	5	W	76-70
06/17/25	at DAL	S	34:18	7	13	.538	2	3	.667	2	6	.333	1	7	8	0	1	2	1	1	-7	18	L	71-80
06/19/25	IND	S	18:52	4	7	.571	0	2	.000	0	1	.000	3	0	3	1	1	0	2	4	-14	8	W	88-77
06/22/25	CON	S	20:02	2	4	.500	0	1	.000	0	0	.000	1	5	6	1	1	2	2	3	22	4	W	87-63
06/25/25	NYL	S	20:23	1	5	.200	0	2	.000	0	0	.000	2	5	7	1	1	0	1	1	2	2	L	78-81
06/27/25	CHI	S	27:58	4	9	.444	0	1	.000	1	2	.500	0	4	4	0	1	2	1	3	5	9	W	83-78
06/29/25	SEA	S	14:46	3	4	.750	0	0	.000	3	5	.600	0	3	3	0	0	1	0	1	11	9	W	84-57
07/05/25	at MIN	P	14:25	2	3	.667	1	1	1.000	0	0	.000	1	3	4	0	0	0	0	2	-9	5	L	71-82
07/07/25	at ATL	S	28:42	7	12	.583	1	3	.333	4	4	1.000	2	4	6	1	1	0	2	3	-1	19	L	81-90
07/09/25	at IND	P	11:30	2	4	.500	1	1	1.000	0	0	.000	0	2	2	0	0	2	1	1	3	5	W	80-61
07/12/25	at LVA	P	09:20	1	2	.500	0	0	.000	3	4	.750	2	0	2	0	0	0	1	1	-6	5	L	102-104
07/14/25	PHO	P	18:40	3	8	.375	1	2	.500	2	2	1.000	3	6	9	1	1	0	0	2	21	9	L	77-78
07/16/25	at SEA	P	5:44	1	1	1.000	0	0	.000	0	0	.000	0	1	1	0	0	0	0	1	-3	2	L	58-67
07/25/25	DAL												Inactive - Injury										W	86-76
07/27/25	at CON												DND - Injury										L	64-95
07/29/25	at ATL	S	8:52	1	2	.500	0	0	.000	1	2	.500	1	0	1	0	0	1	0	1	1	3	W	77-75
07/31/25	at WAS												DND - Injury										W	68-67
08/01/25	at CHI												DND - Injury										W	73-66
08/03/25	at LVA												DND - Injury										L	77-101
08/06/25	LVA												Inactive - Injury										L	72-78
08/09/25	LAS												Inactive - Injury										W	72-59
08/11/25	CON												Inactive - Injury										W	74-57
08/13/25	at WAS												Inactive - Injury										W	88-83
08/15/25	at CHI												DND - Injury										W	90-59
08/17/25	ATL												Inactive - Injury										L	63-79
08/19/25	PHO												Inactive - Injury										L	91-98
08/22/25	at PHO												DND - Injury										L	72-81
08/24/25	at DAL												Inactive - Injury										W	90-81
08/30/25	WAS												Inactive - Injury										W	99-62
08/31/25	IND												Inactive - Injury										W	75-63
09/02/25	NYL	P	19:34	1	7	.143	0	4	.000	3	3	1.000	3	0	3	0	0	0	0	1	-7	5	W	66-58
09/04/25	DAL	P	23:09	4	10	.400	0	0	.000	3	4	.750	1	6	7	3	1	3	3	2	17	11	W	84-80
09/06/25	MIN	P	18:03	2	4	.500	1	2	.500	0	0	.000	0	1	1	0	0	1	0	2	-4	5	L	72-78
2025	TTL	24-8	434	68	144	.472	9	34	.265	34	51	.667	35	75	110	12	14	20	20	41	5	179	23-19	
2025	AVG	--	18.1	2.8	6.0	--	0.4	1.4	--	1.4	2.1	--	1.5	3.1	4.6	0.5	0.6	0.8	0.8	1.7	0.2	7.5	--	

No



# VERONICA BURTON

# 22

**HT:** 5-9  
**DOB:** 7/12/2000  
**POSITION:** Guard  
**ACQUIRED:** Expansion Draft

**COLLEGE:** Northwestern  
**EXPERIENCE:** 3 Seasons

### QUICK FACTS

- Started every game this season for Golden State.
- 10+ games this season without missing a free throw attempt.
- Is the only player in the league this season with multiple games of 10+ assists and 0 turnovers (6/7 vs. LVA and 6/25 vs. NYL)
- Has reached the postseason in all three WNBA seasons (Dallas: 2022, 2023; Connecticut: 2024)
- Became just the second player in WNBA history to have a perfect free throw percentage in 2022 (min. 30 attempts) on the year (Becky Hammon - 2014, 35/35)
- Finished third amongst rookies (2022) in steals per game (0.9)
- WBCA Defensive Player of the Year and AP Third Team All-American for Northwestern in 2022, three-time Big-Ten Defensive Player of the Year (2020, 2021, 2022), also led the NCAA in steals (2021, 2022)

## VERONICA BURTON - WNBA REGULAR SEASON STATISTICS

SEASON	TEAM	GP	GS	MIN	FG	FGA	FG%	3PM	3PA	3P%	FT	FTA	FT%	OR	DR	TOT	A	ST	TO	BS	PTS	PPG
2022-23	DAL	36	6	548	25	76	.329	12	43	.279	32	32	1.000	17	36	53	68	34	35	11	94	2.6
2023-24	DAL	40	13	555	25	85	.294	13	48	.271	31	34	.912	22	48	70	88	29	17	10	94	2.4
2024-25	CON	31	1	393	26	72	.361	13	37	.351	31	37	.838	13	31	44	58	14	15	7	96	3.1
2025-26	GSV	42	42	1,228	142	360	.394	61	170	.359	158	180	.878	47	140	187	247	44	89	26	503	12.0
<b>TOTALS</b>		<b>149</b>	<b>62</b>	<b>2,724</b>	<b>218</b>	<b>593</b>	<b>.368</b>	<b>99</b>	<b>298</b>	<b>.332</b>	<b>252</b>	<b>283</b>	<b>.890</b>	<b>99</b>	<b>255</b>	<b>354</b>	<b>461</b>	<b>121</b>	<b>156</b>	<b>54</b>	<b>787</b>	<b>5.3</b>
<b>AVERAGE</b>		<b>--</b>	<b>--</b>	<b>18.3</b>	<b>1.5</b>	<b>4.0</b>	<b>--</b>	<b>0.7</b>	<b>2.0</b>	<b>--</b>	<b>1.7</b>	<b>1.9</b>	<b>--</b>	<b>0.7</b>	<b>1.7</b>	<b>2.4</b>	<b>3.1</b>	<b>0.8</b>	<b>1.0</b>	<b>0.4</b>	<b>5.3</b>	<b>--</b>

	REG CAREER HIGHS		2025-26 REG HIGHS
PTS	30 at WAS 8/13/25	PTS	30 at WAS 8/13/25
FGM	10 at WAS 8/13/25	FGM	10 at WAS 8/13/25
FGA	17 at DAL 8/24/25	FGA	17 at DAL 8/24/25
3FGM	6 at WAS 8/13/25	3FGM	6 at WAS 8/13/25
3FGA	10 at DAL 8/24/25	3FGA	10 at DAL 8/24/25
FTM	10 vs. PHO 8/19/25	FTM	10 vs. PHO 8/19/25
FTA	11 at PHO 6/5/25	FTA	11 at PHO 6/5/25
OREB	6 at IND 9/1/23	OREB	4 vs. WAS 5/21/25
DREB	7 4 times (vs. NYL, 9/2/25)	DREB	7 4 times (vs. NYL, 9/2/25)
TREB	9 3 times (vs. NYL, 9/2/25)	TREB	9 3 times (vs. NYL, 9/2/25)
ASTS	14 vs. PHO 8/19/25	ASTS	14 vs. PHO 8/19/25
STLS	5 at LAS 5/23/25	STLS	5 at LAS 5/23/25
BLKS	4 at DAL 8/24/25	BLKS	4 at DAL 8/24/25
MINS	39 at DAL 8/24/25	MINS	39 at DAL 8/24/25

## 2025-26 GAME-BY-GAME REGULAR SEASON STATISTICS ( GSV )

DATE	OPP	P/S	MIN	FG	FGA	FG%	3PM	3PA	3P%	FT	FTA	FT%	OR	DR	TOT	A	ST	BS	TO	PF	+/-	PTS	W/L	SCORE	
05/16/25	LAS	S	17:13	0	4	.000	0	2	.000	2	2	1.000	2	0	2	3	2	0	1	0	-6	2	L	67-84	
05/21/25	WAS	S	29:15	6	11	.545	3	4	.750	7	8	.875	4	5	9	5	2	0	3	2	0	22	W	76-74	
05/23/25	at LAS	S	33:15	3	8	.375	0	2	.000	6	6	1.000	1	1	2	3	5	0	2	4	8	12	W	82-73	
05/27/25	at NYL	S	30:18	3	11	.273	2	7	.286	5	5	1.000	1	3	4	6	3	0	3	1	-21	13	L	67-95	
05/29/25	at NYL	S	30:40	1	7	.143	0	4	.000	0	0	.000	1	5	6	5	0	1	0	3	-4	2	L	77-82	
06/01/25	MIN	S	23:31	7	11	.636	3	5	.600	4	5	.800	2	3	5	3	0	1	4	2	8	21	L	75-86	
06/05/25	at PHO	S	28:09	3	9	.333	1	5	.200	9	11	.818	0	2	2	2	2	2	0	2	4	-2	16	L	77-86
06/07/25	LVA	S	32:19	4	10	.400	0	2	.000	6	6	1.000	1	6	7	12	0	1	0	4	40	14	W	95-68	
06/09/25	at LAS	S	31:31	1	5	.200	0	2	.000	7	8	.875	0	2	2	6	0	0	2	5	3	9	W	89-81 (OT)	
06/14/25	SEA	S	34:21	2	8	.250	0	1	.000	4	4	1.000	0	2	2	9	4	1	5	1	1	8	W	76-70	
06/17/25	at DAL	S	27:02	1	8	.125	1	4	.250	1	2	.500	0	3	3	5	1	1	2	5	0	4	L	71-80	
06/19/25	IND	S	31:30	2	11	.182	1	6	.167	6	6	1.000	0	5	5	3	0	1	0	0	10	11	W	88-77	
06/22/25	CON	S	23:55	3	8	.375	2	5	.400	2	3	.667	0	0	0	2	1	0	0	0	1	10	W	87-63	
06/25/25	NYL	S	33:56	3	10	.300	1	4	.250	0	1	.000	3	2	5	10	0	1	0	4	-2	7	L	78-81	
06/27/25	CHI	S	22:22	0	5	.000	0	2	.000	2	3	.667	2	1	3	4	1	0	1	1	1	2	W	83-78	
06/29/25	SEA	S	25:25	5	9	.556	2	5	.400	3	3	1.000	2	3	5	5	0	2	2	22	15	W	84-57		
07/05/25	at MIN	S	31:22	2	9	.222	1	3	.333	1	2	.500	1	2	3	4	0	0	3	2	-8	6	L	71-82	
07/07/25	at ATL	S	26:25	4	7	.571	3	4	.750	0	0	.000	0	3	3	7	1	0	4	1	-2	11	L	81-90	
07/09/25	at IND	S	33:56	6	11	.545	5	6	.833	4	6	.667	3	5	8	6	1	0	2	22	21	W	80-61		
07/12/25	at LVA	S	28:09	3	6	.500	2	5	.400	3	3	1.000	1	4	5	8	0	0	0	6	4	11	L	102-104	
07/14/25	PHO	S	31:06	5	10	.500	4	8	.500	3	3	1.000	1	1	2	6	2	1	2	4	-10	17	L	77-78	
07/16/25	at SEA	S	31:27	3	9	.333	0	3	.000	2	2	1.000	1	7	8	4	0	1	4	3	-13	8	L	58-67	
07/25/25	DAL	S	31:03	0	7	.000	0	5	.000	5	6	.833	3	6	9	3	0	0	2	2	-1	5	W	86-76	
07/27/25	at CON	S	22:15	2	3	.667	0	1	.000	6	7	.857	2	0	2	3	1	0	3	3	-17	10	L	84-95	
07/29/25	at ATL	S	26:04	3	8	.375	2	3	.667	2	2	1.000	1	3	4	1	0	0	5	0	-1	10	W	77-75	
07/31/25	at WAS	S	30:28	4	7	.571	2	3	.667	0	0	.000	2	5	7	10	0	1	4	1	-4	10	W	68-67	
08/01/25	at CHI	S	30:37	4	9	.444	1	3	.333	9	9	1.000	0	4	4	7	2	1	1	1	19	18	W	73-66	
08/03/25	at LVA	S	22:46	3	8	.375	2	5	.400	0	0	.000	0	1	1	3	3	0	0	2	-6	8	L	77-101	
08/06/25	LVA	S	22:59	2	6	.333	2	3	.667	0	0	.000	1	2	3	0	0	0	3	2	-14	6	L	72-78	
08/09/25	LAS	S	34:08	5	9	.556	3	5	.600	3	3	1.000	2	3	5	5	0	1	1	0	14	16	W	72-59	
08/11/25	CON	S	30:08	0	3	.000	0	1	.000	3	4	.750	2	4	6	10	0	1	1	0	16	3	W	74-57	
08/13/25	at WAS	S	35:41	10	13	.769	6	9	.667	4	6	.667	0	7	7	7	1	0	3	4	4	30	W	88-83	
08/15/25	at CHI	S	29:57	3	7	.429	2	4	.500	3	4	.750	2	3	5	2	3	0	1	2	24	11	W	90-59	
08/17/25	ATL	S	30:46	4	10	.400	1	5	.200	7	7	1.000	1	0	1	5	2	0	1	3	-7	16	L	63-79	
08/19/25	PHO	S	34:08	6	13	.462	2	5	.400	10	10	1.000	0	2	2	14	2	0	0	4	-10	24	L	91-98	
08/22/25	at PHO	S	24:52	5	10	.500	1	5	.200	0	0	.000	0	5	5	8	1	2	2	0	-12	11	L	72-81	
08/24/25	at DAL	S	38:30	7	17	.412	3	10	.300	8	8	1.000	1	4	5	13	0	4	3	3	13	25	W	90-81	
08/30/25	WAS	S	21:56	3	5	.600	2	3	.667	7	7	1.000	0	5	5	5	1	2	2	23	15	W	99-62		
08/31/25	IND	S	34:33	3	9	.333	0	1	.000	2	2	1.000	0	7	7	13	1	2	5	3	13	8	W	75-63	
09/02/25	NYL	S	33:03	1	9	.111	0	4	.000	4	5	.800	2	7	9	9	2	0	4	4	16	6	W	66-58	
09/04/25	DAL	S	24:23	5	10	.500	0	3	.000	5	5	1.000	1	2	3	5	0	1	2	2	-13	15	W	84-80	
09/06/25	MIN	S	32:27	5	10	.500	1	3	.333	3	6	.500	1	5	6	6	0	0	4	3	2	14	L	72-78	
2025	TTL	42-42	1,228	142	360	.394	61	170	.359	158	180	.878	47	140	187	247	44	26	89	97	111	503	23-19		
2025	AVG	--	29.2	3.4	8.6	--	1.5	4.0	--	3.8	4.3	--	1.1	3.3	4.5	5.9	1.0	0.6	2.1	2.3	2.6	12.0	--		

No



# KAILA CHARLES

# 6

**HT:** 6-1  
**DOB:** 3/23/1998  
**POSITION:** Guard/Forward  
**ACQUIRED:** Hardship Contract

**COLLEGE:** Maryland  
**EXPERIENCE:** 5 Seasons

## QUICK FACTS

- Appeared in 17 games for Dallas this season, averaging 5.3 points, 4.0 rebounds and 1.1 assists in 15.8 MPG.
- Spent the 2023 season with Seattle and 2022 campaign with Atlanta, playing in five games over that stretch.
- Drafted 23rd overall by Connecticut in the 2020 WNBA Draft out of Maryland, shooting 41.2 percent from the field her first season with the Sun (21 games) for 5.4 PPG, 2.6 RPG and 0.9 APG.
- Started four games and appeared in 30 for the Sun in 2021, averaging 16.3 minutes, 4.3 points, 2.8 rebounds and 1.1 assists per game.
- Third-Team All-American (AP, USBWA) in 2020 for Maryland, three-time First-Team All-Big Ten (2018-2020), Big Ten All-Freshman Team (2017).
- Tallied 1,984 points, 930 rebounds and 263 assists during her Terp tenure.

## KAILA CHARLES - WNBA REGULAR SEASON STATISTICS

SEASON	TEAM	GP	GS	MIN	FG	FGA	FG%	3PM	3PA	3P%	FT	FTA	FT%	OR	DR	TOT	A	ST	TO	BS	PTS	PPG
2020-21	CON	21	7	376	40	97	.412	11	30	.367	22	31	.710	23	31	54	19	16	19	7	113	5.4
2021-22	CON	30	4	489	49	133	.368	10	33	.303	21	24	.875	33	51	84	33	14	26	11	129	4.3
2022-23	NYL	0	0	0	0	0	0	0	0	0	0	0	0	0	0	0	0	0	0	0	0	0.0
Went from <b>NYL</b> to <b>ATL</b> .																						
2022-23	ATL	1	0	2	0	0	.000	0	0	.000	0	0	.000	0	0	0	0	0	0	0	0	0.0
2022-23	TOT	1	0	1	0	0	.000	0	0	.000	0	0	.000	0	0	0	0	0	0	0	0	0.0
2023-24	SEA	4	0	41	3	12	.250	0	2	.000	0	0	.000	3	2	5	1	1	0	0	6	1.5
2025-26	DAL	17	4	269	29	80	.363	10	30	.333	22	27	.815	25	43	68	18	9	16	4	90	5.3
Went from <b>DAL</b> to <b>GSV</b> .																						
2025-26	GSV	16	6	296	43	90	.478	14	37	.378	13	17	.765	18	47	65	14	16	17	2	113	7.1
2025-26	TOT	33	10	564	72	170	.424	24	67	.358	35	44	.795	43	90	133	32	25	33	6	203	6.2
<b>TOTALS</b>		<b>89</b>	<b>21</b>	<b>1,473</b>	<b>164</b>	<b>412</b>	<b>.398</b>	<b>45</b>	<b>132</b>	<b>.341</b>	<b>78</b>	<b>99</b>	<b>.788</b>	<b>102</b>	<b>174</b>	<b>276</b>	<b>85</b>	<b>56</b>	<b>78</b>	<b>24</b>	<b>451</b>	<b>5.1</b>
<b>AVERAGE</b>		<b>--</b>	<b>--</b>	<b>16.6</b>	<b>1.8</b>	<b>4.6</b>	<b>--</b>	<b>0.5</b>	<b>1.5</b>	<b>--</b>	<b>0.9</b>	<b>1.1</b>	<b>--</b>	<b>1.1</b>	<b>2.0</b>	<b>3.1</b>	<b>1.0</b>	<b>0.6</b>	<b>0.9</b>	<b>0.3</b>	<b>5.1</b>	<b>--</b>

	REG CAREER HIGHS	2025-26 REG HIGHS
PTS	16 3 times (vs. WAS, 8/30/25)	16 2 times (vs. WAS, 8/30/25)
FGM	7 2 times (vs. MIN, 9/6/25)	7 2 times (vs. MIN, 9/6/25)
FGA	17 vs. MIN 9/6/25	17 vs. MIN 9/6/25
3FGM	3 2 times (@ LVA, 8/3/25)	3 at LVA 8/3/25
3FGA	6 vs. WAS 8/30/25	6 vs. WAS 8/30/25
FTM	6 2 times (@ CHI, 6/17/21)	5 vs. GSV 6/17/25
FTA	6 5 times (@ PHO, 8/22/25)	6 2 times (@ PHO, 8/22/25)
OREB	6 vs. DAL 6/22/21	5 at LVA 8/3/25
DREB	8 vs. MIN 9/6/25	8 vs. MIN 9/6/25
TREB	12 vs. DAL 6/22/21	8 2 times (vs. MIN, 9/6/25)
ASTS	4 2 times (vs. GSV, 6/17/25)	4 vs. GSV 6/17/25
STLS	3 5 times (vs. IND, 8/31/25)	3 4 times (vs. IND, 8/31/25)
BLKS	2 5 times (vs. LAS, 6/6/25)	2 vs. LAS 6/6/25
MINS	34 vs. PHO 9/9/20	34 at DAL 8/24/25





# KAITLYN CHEN

# 2

**HT:** 5-9  
**DOB:** 2/22/2002  
**POSITION:** Guard  
**ACQUIRED:** Free Agent

**COLLEGE:** Connecticut  
**EXPERIENCE:** Rookie

### QUICK FACTS

- Signed a rest-of-season contract on June 15 with Golden State
- Selected 30th overall by Golden State in 2025, is the first person of Taiwanese descent to be drafted by a WNBA team
- NCAA Champion with Connecticut in 2025
- 2024 WBCA All-American Honorable Mention and CSC
- Academic All-American, 2023 Ivy League Player of the Year, Two-time First Team All-Ivy (2023, '24), Three-time Ivy League Tournament Most Outstanding Player (2022, '23, '24), Three-time Ivy League All-Tournament Team (2022, '23, '24)
- Compiled 1,276 points, 313 rebounds and 359 assists in three seasons at Princeton, and is third in Princeton history in career assists and 12th in career points

## KAITLYN CHEN - WNBA REGULAR SEASON STATISTICS

SEASON	TEAM	GP	GS	MIN	FG	FGA	FG%	3PM	3PA	3P%	FT	FTA	FT%	OR	DR	TOT	A	ST	TO	BS	PTS	PPG
2025-26	GSV	23	0	242	19	50	.380	5	15	.333	5	7	.714	5	17	22	24	5	18	0	48	2.1
<b>TOTALS</b>		<b>23</b>	<b>0</b>	<b>242</b>	<b>19</b>	<b>50</b>	<b>.380</b>	<b>5</b>	<b>15</b>	<b>.333</b>	<b>5</b>	<b>7</b>	<b>.714</b>	<b>5</b>	<b>17</b>	<b>22</b>	<b>24</b>	<b>5</b>	<b>18</b>	<b>0</b>	<b>48</b>	<b>2.1</b>
<b>AVERAGE</b>		<b>--</b>	<b>--</b>	<b>10.5</b>	<b>0.8</b>	<b>2.2</b>	<b>--</b>	<b>0.2</b>	<b>0.7</b>	<b>--</b>	<b>0.2</b>	<b>0.3</b>	<b>--</b>	<b>0.2</b>	<b>0.7</b>	<b>1.0</b>	<b>1.0</b>	<b>0.2</b>	<b>0.8</b>	<b>0.0</b>	<b>2.1</b>	<b>--</b>

REG CAREER HIGHS		2025-26 REG HIGHS	
PTS	10 vs. CHI 6/27/25	PTS	10 vs. CHI 6/27/25
FGM	3 2 times (@ ATL, 7/7/25)	FGM	3 2 times (@ ATL, 7/7/25)
FGA	5 2 times (@ LVA, 8/3/25)	FGA	5 2 times (@ LVA, 8/3/25)
3FGM	1 5 times (@ LVA, 8/3/25)	3FGM	1 5 times (@ LVA, 8/3/25)
3FGA	3 at CHI 8/1/25	3FGA	3 at CHI 8/1/25
FTM	3 vs. CHI 6/27/25	FTM	3 vs. CHI 6/27/25
FTA	5 vs. CHI 6/27/25	FTA	5 vs. CHI 6/27/25
OREB	1 5 times (vs. DAL, 9/4/25)	OREB	1 5 times (vs. DAL, 9/4/25)
DREB	5 vs. SEA 6/29/25	DREB	5 vs. SEA 6/29/25
TREB	6 vs. SEA 6/29/25	TREB	6 vs. SEA 6/29/25
ASTS	5 at LVA 8/3/25	ASTS	5 at LVA 8/3/25
STLS	2 at IND 7/9/25	STLS	2 at IND 7/9/25
BLKS	--	BLKS	--
MINS	25 vs. CHI 6/27/25	MINS	25 vs. CHI 6/27/25

## 2025-26 GAME-BY-GAME REGULAR SEASON STATISTICS ( GSV )

DATE	OPP	P/S	MIN	FG	FGA	FG%	3PM	3PA	3P%	FT	FTA	FT%	OR	DR	TOT	A	ST	BS	TO	PF	+/-	PTS	W/L	SCORE
06/17/25	at DAL																						L	71-80
06/19/25	IND																						W	88-77
06/22/25	CON	P	20:55	2	3	.667	0	0	.000	1	1	1.000	0	1	1	1	0	0	1	0	15	5	W	87-63
06/25/25	NYL	P	8:54	0	2	.000	0	1	.000	0	0	.000	0	0	0	0	0	0	0	0	-6	0	L	78-81
06/27/25	CHI	P	24:48	3	4	.750	1	1	1.000	3	5	.600	1	1	2	2	0	0	1	2	5	10	W	83-78
06/29/25	SEA	P	22:36	1	1	1.000	0	0	.000	0	0	.000	1	5	6	3	1	0	2	1	10	2	W	84-57
07/05/25	at MIN	P	03:38	0	1	.000	0	0	.000	0	0	.000	0	0	0	1	0	0	0	1	0	0	L	71-82
07/07/25	at ATL	P	14:45	3	5	.600	1	2	.500	0	0	.000	0	0	0	0	0	0	1	1	-3	7	L	81-90
07/09/25	at IND	P	14:08	2	3	.667	1	1	1.000	0	0	.000	1	0	1	3	2	0	2	0	-1	5	W	80-61
07/12/25	at LVA	P	10:39	1	3	.333	0	1	.000	1	1	1.000	0	0	0	2	1	0	1	2	-6	3	L	102-104
07/14/25	PHO																						L	77-78
07/16/25	at SEA	P	12:19	1	3	.333	0	1	.000	0	0	.000	0	0	0	0	0	0	0	2	-4	2	L	58-67
07/25/25	DAL	P	3:42	0	0	.000	0	0	.000	0	0	.000	0	0	0	0	0	0	0	-2	0	0	W	86-76
07/27/25	at CON	P	16:02	1	1	1.000	1	1	1.000	0	0	.000	0	2	2	1	0	0	3	2	-5	3	L	64-95
07/29/25	at ATL																						W	77-75
07/31/25	at WAS	P	3:21	1	1	1.000	0	0	.000	0	0	.000	0	0	0	0	0	0	0	1	-6	2	W	68-67
08/01/25	at CHI	P	23:38	0	4	.000	0	3	.000	0	0	.000	0	2	2	3	0	0	2	2	3	0	W	73-66
08/03/25	at LVA	P	18:13	1	5	.200	1	2	.500	0	0	.000	0	0	0	5	1	0	1	0	-11	3	L	77-101
08/06/25	LVA																						L	72-78
08/09/25	LAS	P	1:34	0	0	.000	0	0	.000	0	0	.000	0	0	0	0	0	0	1	0	-4	0	W	72-59
08/11/25	CON	P	1:58	0	2	.000	0	0	.000	0	0	.000	0	0	0	0	0	0	0	-3	0	0	W	74-57
08/13/25	at WAS																						W	88-83
08/15/25	at CHI	P	2:52	1	1	1.000	0	0	.000	0	0	.000	0	0	0	1	0	0	0	2	2	2	W	90-59
08/17/25	ATL	P	1:52	0	0	.000	0	0	.000	0	0	.000	0	1	1	0	0	0	0	0	4	0	L	63-79
08/19/25	PHO	P	13:38	1	3	.333	0	0	.000	0	0	.000	1	3	4	1	0	0	0	1	-4	2	L	91-98
08/22/25	at PHO	P	6:39	0	0	.000	0	0	.000	0	0	.000	0	0	0	0	0	0	2	0	5	0	L	72-81
08/24/25	at DAL	P	4:58	1	2	.500	0	1	.000	0	0	.000	0	1	1	0	0	0	0	0	-11	2	W	90-81
08/30/25	WAS	P	8:53	0	3	.000	0	1	.000	0	0	.000	0	0	0	1	0	0	0	1	3	0	W	99-62
08/31/25	IND																						W	75-63
09/02/25	NYL																						W	66-58
09/04/25	DAL	P	2:02	0	3	.000	0	0	.000	0	0	.000	1	1	2	0	0	0	1	0	-4	0	W	84-80
09/06/25	MIN																						L	72-78
2025	TTL		23-0	242	19	50	.380	5	15	.333	5	7	.714	5	17	22	24	5	0	18	16	-23	48	18-14
2025	AVG		--	10.5	0.8	2.2	--	0.2	0.7	--	0.2	0.3	--	0.2	0.7	1.0	1.0	0.2	0.0	0.8	0.7	-1.0	2.1	--



# TEMI FÁGBÉNLÉ

# 14

**HT:** 6-4  
**DOB:** 9/8/1992  
**POSITION:** Center  
**ACQUIRED:** Expansion Draft

**COLLEGE:** Harvard  
**EXPERIENCE:** 4 Seasons

## QUICK FACTS

- Shot 50.0 percent or better in every season of her career, and has 13 games in which she's shot 50.0 percent or better.
- Had her most impactful season in her WNBA career, averaging 6.4 points, 4.7 rebounds, shot 50.9 percent from the floor and started two games in 22 games played in 2024 for Indiana
- WNBA Champion in 2017 with Minnesota, and made 21 appearances her rookie season, averaging 1.2 points and 1.0 rebounds
- A team captain, full-time starter, All-Pac-12 Team honoree and Pac-12 All-Defensive Honorable Mention selection for USC, recorded 10 double-doubles and led USC in scoring (13.6 ppg), rebounding (8.7 rpg), blocks (1.2 bpg), steals (1.8 spg), free throws made (93) and minutes played (30.3 mpg) in 2015-16
- All-Ivy League Second Team selection in her final season at Harvard (2014-15), started in all 28 games played that season and averaged 14.4 points, 10.4 rebounds, 2.0 assists and 1.0 blocks per game
- Posted 13 double-doubles and ranked first in the Ivy League and 37th in the country in rebounds per game (10.1) in 2014-15
- Represented Great Britain in the FIBA EuroBasket Women 2025 and 2012 Olympic games and averaged 4.8 points and 4.0 rebounds during the tournament

## TEMI FÁGBÉNLÉ - WNBA REGULAR SEASON STATISTICS

SEASON	TEAM	GP	GS	MIN	FG	FGA	FG%	3PM	3PA	3P%	FT	FTA	FT%	OR	DR	TOT	A	ST	TO	BS	PTS	PPG
2017-18	MIN	21	0	89	9	18	.500	0	0	.000	7	9	.778	5	16	21	1	3	8	4	25	1.2
2018-19	MIN	30	2	283	39	77	.506	0	0	.000	16	23	.696	28	32	60	17	8	22	9	94	3.1
2019-20	MIN	18	0	271	42	81	.519	1	6	.167	13	18	.722	22	30	52	15	6	32	6	98	5.4
2024-25	IND	22	2	415	58	114	.509	2	12	.167	22	28	.786	31	73	104	20	11	27	15	140	6.4
2025-26	GSV	37	36	860	116	231	.502	11	58	.190	25	34	.735	64	116	180	59	31	55	20	268	7.2
<b>TOTALS</b>		<b>128</b>	<b>40</b>	<b>1,917</b>	<b>264</b>	<b>521</b>	<b>.507</b>	<b>14</b>	<b>76</b>	<b>.184</b>	<b>83</b>	<b>112</b>	<b>.741</b>	<b>150</b>	<b>267</b>	<b>417</b>	<b>112</b>	<b>59</b>	<b>144</b>	<b>54</b>	<b>625</b>	<b>4.9</b>
<b>AVERAGE</b>		<b>--</b>	<b>--</b>	<b>15.0</b>	<b>2.1</b>	<b>4.1</b>	<b>--</b>	<b>0.1</b>	<b>0.6</b>	<b>--</b>	<b>0.6</b>	<b>0.9</b>	<b>--</b>	<b>1.2</b>	<b>2.1</b>	<b>3.3</b>	<b>0.9</b>	<b>0.5</b>	<b>1.1</b>	<b>0.4</b>	<b>4.9</b>	<b>--</b>

	REG CAREER HIGHS		2025-26 REG HIGHS
PTS	17 at LAS 5/24/24	PTS	16 2 times (vs. NYL, 9/2/25)
FGM	8 vs. SEA 6/14/25	FGM	8 vs. SEA 6/14/25
FGA	14 vs. SEA 6/14/25	FGA	14 vs. SEA 6/14/25
3FGM	2 vs. LAS 5/16/25	3FGM	2 vs. LAS 5/16/25
3FGA	4 2 times (@ LAS, 6/9/25)	3FGA	4 2 times (@ LAS, 6/9/25)
FTM	5 at LVA 5/25/24	FTM	4 at LAS 6/9/25
FTA	5 3 times (@ LAS, 6/9/25)	FTA	5 at LAS 6/9/25
OREB	8 at LAS 6/9/25	OREB	8 at LAS 6/9/25
DREB	6 7 times (@ DAL, 8/24/25)	DREB	6 4 times (@ DAL, 8/24/25)
TREB	13 at LAS 6/9/25	TREB	13 at LAS 6/9/25
ASTS	4 3 times (@ NYL, 5/27/25)	ASTS	4 2 times (@ NYL, 5/27/25)
STLS	4 2 times (@ LAS, 6/9/25)	STLS	4 2 times (@ LAS, 6/9/25)
BLKS	4 at LAS 6/9/25	BLKS	4 at LAS 6/9/25
MINS	38 vs. NYL 9/2/25	MINS	38 vs. NYL 9/2/25

## 2025-26 GAME-BY-GAME REGULAR SEASON STATISTICS ( GSV )

DATE	OPP	P/S	MIN	FG	FGA	FG%	3PM	3PA	3P%	FT	FTA	FT%	OR	DR	TOT	A	ST	BS	TO	PF	+/-	PTS	W/L	SCORE
05/16/25	LAS	S	31:38	6	8	.750	2	4	.500	1	1	1.000	2	3	5	4	2	0	1	3	-17	15	L	67-84
05/21/25	WAS	S	27:02	3	10	.300	0	2	.000	0	0	.000	2	5	7	2	4	0	2	5	6	6	W	76-74
05/23/25	at LAS	S	26:50	4	6	.667	0	1	.000	0	0	.000	1	5	6	3	0	1	2	4	-6	8	W	82-73
05/27/25	at NYL	S	31:22	5	5	1.000	1	1	1.000	0	1	.000	2	1	3	4	0	1	2	3	-20	11	L	67-95
05/29/25	at NYL	S	19:40	4	6	.667	1	2	.500	0	0	.000	2	3	5	0	0	0	4	5	-5	9	L	77-82
06/01/25	MIN	S	24:38	1	4	.250	0	3	.000	3	4	.750	0	3	3	1	2	1	0	3	1	5	L	75-86
06/05/25	at PHO	S	28:18	5	12	.417	1	3	.333	1	2	.500	5	6	11	1	2	2	1	1	-13	12	L	77-86
06/07/25	LVA	S	13:23	3	4	.750	0	0	.000	1	1	1.000	1	0	1	1	1	1	4	18	7	W	95-68	
06/09/25	at LAS	S	28:01	5	12	.417	0	4	.000	4	5	.800	8	5	13	1	4	4	5	3	14	14	W	89-81 (OT)
06/14/25	SEA	S	27:18	8	14	.571	0	2	.000	0	0	.000	2	5	7	2	0	0	0	3	3	16	W	76-70
06/25/25	NYL																						L	78-81
06/27/25	CHI																						W	83-78
06/29/25	SEA	P	20:25	2	4	.500	0	0	.000	0	1	.000	1	3	4	2	0	0	1	2	14	4	W	84-57
07/05/25	at MIN	S	25:35	3	6	.500	0	2	.000	1	2	.500	2	4	6	2	0	1	2	5	-2	7	L	71-82
07/07/25	at ATL	S	24:52	0	3	.000	0	1	.000	0	0	.000	2	2	4	2	1	0	4	5	-9	0	L	81-90
07/09/25	at IND	S	18:54	2	4	.500	0	1	.000	3	4	.750	2	3	5	2	1	0	2	4	8	7	W	80-61
07/12/25	at LVA	S	27:19	6	7	.857	0	0	.000	1	3	.333	1	2	3	1	1	0	0	5	9	13	L	102-104
07/14/25	PHO	S	11:19	0	2	.000	0	1	.000	0	0	.000	3	0	3	1	0	0	0	0	-15	0	L	77-78
07/16/25	at SEA	S	25:33	2	2	1.000	1	1	1.000	0	0	.000	2	2	4	1	1	1	0	5	-7	5	L	58-67
07/25/25	DAL	S	25:16	5	9	.556	0	1	.000	1	1	1.000	2	6	8	1	1	1	2	1	9	11	W	86-76
07/27/25	at CON	S	20:59	3	8	.375	1	2	.500	0	0	.000	1	3	4	3	1	0	2	1	-24	7	L	64-95
07/29/25	at ATL	S	24:27	2	4	.500	0	1	.000	0	0	.000	2	3	5	2	0	1	0	4	-2	4	W	77-75
07/31/25	at WAS	S	26:35	5	11	.455	0	2	.000	0	0	.000	1	5	6	3	1	0	0	1	-9	10	W	68-67
08/01/25	at CHI	S	18:12	2	7	.286	0	1	.000	0	0	.000	2	2	4	2	0	0	0	2	8	4	W	73-66
08/03/25	at LVA	S	18:05	0	1	.000	0	1	.000	0	0	.000	1	5	6	2	2	0	3	2	-3	0	L	77-101
08/06/25	LVA	S	27:09	4	8	.500	0	2	.000	0	0	.000	1	4	5	1	1	0	1	4	8	8	L	72-78
08/09/25	LAS	S	25:19	4	8	.500	0	1	.000	0	0	.000	1	5	6	2	0	0	3	2	13	8	W	72-59
08/11/25	CON	S	20:38	3	6	.500	0	1	.000	0	0	.000	3	6	9	1	1	1	1	2	15	6	W	74-57
08/13/25	at WAS	S	13:35	1	2	.500	0	0	.000	0	0	.000	0	0	0	1	0	0	2	2	-5	2	W	88-83
08/15/25	at CHI	S	20:31	0	4	.000	0	2	.000	3	3	1.000	2	3	5	1	0	1	0	1	15	3	W	90-59
08/17/25	ATL	S	14:24	4	9	.444	0	2	.000	0	0	.000	0	3	3	0	0	1	1	5	-10	8	L	63-79
08/19/25	PHO	S	16:50	3	6	.500	1	3	.333	0	0	.000	1	1	2	0	0	0	0	5	-9	7	L	91-98
08/22/25	at PHO	S	15:30	1	3	.333	0	1	.000	2	2	1.000	0	0	0	1	1	1	0	1	-5	4	L	72-81
08/24/25	at DAL	S	36:11	3	5	.600	1	3	.333	2	2	1.000	3	6	9	3	1	1	4	3	11	9	W	90-81
08/30/25	WAS	S	19:21	2	4	.500	1	2	.500	0	0	.000	0	3	3	2	0	2	2	4	9	5	W	99-62
08/31/25	IND	S	30:47	3	5	.600	0	0	.000	0	0	.000	2	4	6	2	1	0	5	5	10	6	W	75-63
09/02/25	NYL	S	38:08	7	10	.700	1	2	.500	1	1	1.000	1	4	5	2	2	0	1	3	14	16	W	66-58
09/04/25	DAL	S	12:13	2	5	.400	0	1	.000	1	1	1.000	0	1	1	0	0	0	0	1	-6	5	W	84-80
09/06/25	MIN	S	23:42	3	7	.429	0	2	.000	0	0	.000	3	0	3	0	0	0	1	3	-2	6	L	72-78
2025	TTL	37-36	860	116	231	.502	11	58	.190	25	34	.735	64	116	180	59	31	20	55	112	16	268	21-18	
2025	AVG	--	23.2	3.1	6.2	--	0.3	1.6	--	0.7	0.9	--	1.7	3.1	4.9	1.6	0.8	0.5	1.5	3.0	0.4	7.2	--	

No



# TIFFANY HAYES

# 15

**HT:** 5-10  
**DOB:** 9/20/1989  
**POSITION:** Guard  
**ACQUIRED:** Free Agent

**COLLEGE:** UConn  
**EXPERIENCE:** 12 Seasons

### QUICK FACTS

- One of five active players with over 4,900 career points, 1,200 rebounds, 900 assists and 350 steals
- Sixth Woman of the Year in (2024 - Las Vegas Aces), All-WNBA and All-Defensive Team (2018 - Atlanta Dream), All-Star Starter and Eastern Conference Player of the Month (May 2017 - Atlanta), All-Rookie Team (2012 - Atlanta Dream)
- Became the seventh-fastest player to record at least 4,000 points, 1,000 rebounds, 750 assists, 300 steals and 350 three-point field goals in WNBA history - 307 games
- Shot 40.5% from the three-point line in 2021 for, making her one of five players in the league in 2021 to shoot at least 40% from beyond the arc while averaging at least four attempted three-pointers per game
- Finished sixth in MVP balloting and fourth in Defensive Player of the Year voting when she was a three-time pick Eastern Conference Player of the Week honoree in 2018
- Led Connecticut to two national championships (2009 & 2010) and four Final Four appearances
- Two-time All-Big East First Team selection (2011-12 & 2010-11), and finished her Husky career with 147-7 record

## TIFFANY HAYES - WNBA REGULAR SEASON STATISTICS

SEASON	TEAM	GP	GS	MIN	FG	FGA	FG%	3PM	3PA	3P%	FT	FTA	FT%	OR	DR	TOT	A	ST	TO	BS	PTS	PPG
2012-13	ATL	34	17	787	90	231	.390	21	77	.273	92	117	.786	24	81	105	73	28	51	12	293	8.6
2013-14	ATL	23	4	513	80	197	.406	23	61	.377	76	102	.745	20	66	86	39	27	40	3	259	11.3
2014-15	ATL	34	32	966	143	308	.464	40	112	.357	111	146	.760	31	70	101	86	34	40	9	437	12.9
2015-16	ATL	28	27	836	115	293	.392	31	113	.274	99	123	.805	29	55	84	62	29	47	11	360	12.9
2016-17	ATL	33	33	1,016	153	347	.441	32	117	.274	156	194	.804	33	79	112	78	40	59	8	494	15.0
2017-18	ATL	33	33	992	166	381	.436	48	129	.372	158	185	.854	31	96	127	80	41	62	8	538	16.3
2018-19	ATL	31	29	897	177	401	.441	42	131	.321	138	169	.817	28	84	112	83	36	50	7	534	17.2
2019-20	ATL	29	29	817	147	374	.393	36	117	.308	97	127	.764	21	66	87	82	29	70	8	427	14.7
2021-22	ATL	21	19	595	105	240	.438	34	84	.405	64	75	.853	14	53	67	63	33	31	4	308	14.7
2022-23	ATL	11	11	303	66	121	.545	18	42	.429	28	41	.683	3	37	40	23	8	22	1	178	16.2
2023-24	CON	40	40	1,082	168	353	.476	48	131	.366	98	126	.778	38	82	120	105	34	56	3	482	12.1
2024-25	LVA	33	5	708	110	220	.500	33	82	.402	60	84	.714	27	65	92	69	25	28	9	313	9.5
2025-26	GSV	26	24	700	99	237	.418	41	101	.406	64	80	.800	18	82	100	77	14	49	4	303	11.7
<b>TOTALS</b>		<b>376</b>	<b>303</b>	<b>10,212</b>	<b>1,619</b>	<b>3,703</b>	<b>.437</b>	<b>447</b>	<b>1,297</b>	<b>.345</b>	<b>1,241</b>	<b>1,569</b>	<b>.791</b>	<b>317</b>	<b>916</b>	<b>1,233</b>	<b>920</b>	<b>378</b>	<b>605</b>	<b>87</b>	<b>4,926</b>	<b>13.1</b>
<b>AVERAGE</b>		<b>--</b>	<b>--</b>	<b>27.2</b>	<b>4.3</b>	<b>9.8</b>	<b>--</b>	<b>1.2</b>	<b>3.4</b>	<b>--</b>	<b>3.3</b>	<b>4.2</b>	<b>--</b>	<b>0.8</b>	<b>2.4</b>	<b>3.3</b>	<b>2.4</b>	<b>1.0</b>	<b>1.6</b>	<b>0.2</b>	<b>13.1</b>	<b>--</b>

	REG CAREER HIGHS
PTS	34 at IND 8/10/19
FGM	12 at IND 8/10/19
FGA	24 vs. CHI 8/20/19
3FGM	6 at MIN 8/5/18
3FGA	11 at MIN 8/5/18
FTM	14 at IND 8/28/15
FTA	15 3 times (@ DAL, 8/25/19)
OREB	4 2 times (@ CHI, 7/12/23)
DREB	9 vs. CON 8/25/15
TREB	11 at NYL 5/24/16
ASTS	8 2 times (@ WAS, 5/23/23)
STLS	5 2 times (@ WAS, 6/17/21)
BLKS	3 at LAS 7/16/15
MINS	46 at MIN 7/22/14

	2025-26 REG HIGHS
PTS	23 at MIN 7/5/25
FGM	8 2 times (@ MIN, 7/5/25)
FGA	16 vs. LAS 5/16/25
3FGM	5 at MIN 7/5/25
3FGA	7 at LVA 7/12/25
FTM	8 at WAS 8/13/25
FTA	8 at WAS 8/13/25
OREB	3 at WAS 8/13/25
DREB	8 2 times (vs. LVA, 8/6/25)
TREB	9 2 times (vs. LVA, 8/6/25)
ASTS	6 vs. LAS 8/9/25
STLS	2 2 times (vs. ATL, 8/17/25)
BLKS	1 4 times (@ CHI, 8/15/25)
MINS	34 vs. NYL 6/25/25

## 2025-26 GAME-BY-GAME REGULAR SEASON STATISTICS ( GSV )

DATE	OPP	P/S	MIN	FG	FGA	FG%	3PM	3PA	3P%	FT	FTA	FT%	OR	DR	TOT	A	ST	BS	TO	PF	+/-	PTS	W/L	SCORE
05/16/25	LAS	S	30:21	7	16	.438	2	5	.400	3	3	1.000	2	7	9	1	1	1	4	4	-21	19	L	67-84
05/21/25	WAS	S	13:24	0	4	.000	0	2	.000	2	2	1.000	0	1	1	1	0	0	0	1	4	2	W	76-74
05/23/25	at LAS																						W	82-73
05/27/25	at NYL																						L	67-95
05/29/25	at NYL																						L	77-82
06/01/25	MIN	S	15:25	3	6	.500	1	3	.333	2	2	1.000	2	0	2	2	1	0	0	4	7	9	L	75-86
06/05/25	at PHO																						L	77-86
06/07/25	LVA																						W	95-68
06/09/25	at LAS																						W	89-81 (OT)
06/14/25	SEA																						W	76-70
06/17/25	at DAL	P	22:24	3	10	.300	2	4	.500	2	2	1.000	1	1	2	1	0	0	1	0	-19	10	L	71-80
06/19/25	IND	P	32:13	4	9	.444	0	2	.000	6	6	1.000	0	3	3	5	1	0	1	3	20	14	W	88-77
06/22/25	CON	S	26:59	5	12	.417	2	4	.500	2	2	1.000	0	4	4	2	0	0	0	1	21	14	W	87-63
06/25/25	NYL	S	33:39	4	12	.333	2	6	.333	5	6	.833	1	4	5	3	1	1	3	5	-3	15	L	78-81
06/27/25	CHI	S	26:25	4	13	.308	1	5	.200	4	7	.571	0	5	5	4	1	0	2	1	4	13	W	83-78
06/29/25	SEA	S	25:39	8	13	.615	3	6	.500	2	2	1.000	0	3	3	4	0	0	1	0	18	21	W	84-57
07/05/25	at MIN	S	33:17	8	11	.727	5	6	.833	2	2	1.000	1	2	3	4	0	0	1	3	-6	23	L	71-82
07/07/25	at ATL	S	27:24	4	10	.400	2	5	.400	2	2	1.000	0	3	3	1	0	0	6	3	-3	12	L	81-90
07/09/25	at IND	S	27:57	3	6	.500	0	1	.000	0	0	.000	0	8	8	2	1	0	6	0	22	6	W	80-61
07/12/25	at LVA	S	25:51	5	8	.625	4	7	.571	2	2	1.000	0	2	2	5	0	1	1	1	2	16	L	102-104
07/14/25	PHO	S	33:24	5	12	.417	4	5	.800	1	2	.500	0	3	3	4	1	0	3	2	3	15	L	77-78
07/16/25	at SEA	S	20:17	1	3	.333	1	2	.500	0	0	.000	0	2	2	1	0	0	1	2	-7	3	L	58-67
07/25/25	DAL	S	31:10	5	8	.625	2	4	.500	5	6	.833	0	3	3	5	0	0	2	5	14	17	W	86-76
07/27/25	at CON	S	21:27	0	8	.000	0	4	.000	4	6	.667	2	2	4	2	0	0	2	1	-20	4	L	64-95
07/29/25	at ATL	S	32:21	6	12	.500	3	5	.600	0	0	.000	1	2	3	5	2	0	3	2	-3	15	W	77-75
07/31/25	at WAS	S	19:44	0	2	.000	0	1	.000	0	0	.000	1	1	2	4	0	0	1	2	-4	0	W	68-67
08/01/25	at CHI																						W	73-66
08/03/25	at LVA																						L	77-101
08/06/25	LVA	S	30:29	4	10	.400	0	2	.000	6	7	.857	1	8	9	1	0	0	1	4	5	14	L	72-78
08/09/25	LAS	S	29:00	4	10	.400	0	4	.000	0	2	.000	1	6	7	6	1	0	3	1	7	8	W	72-59
08/11/25	CON	S	31:49	6	13	.462	3	6	.500	2	4	.500	1	4	5	4	0	0	2	3	26	17	W	74-57
08/13/25	at WAS	S	31:42	3	7	.429	0	1	.000	8	8	1.000	3	3	6	2	1	0	0	2	3	14	W	88-83
08/15/25	at CHI	S	28:00	4	8	.500	2	3	.667	3	5	.600	1	4	5	2	1	1	3	2	10	13	W	90-59
08/17/25	ATL	S	28:26	1	9	.111	1	5	.200	1	2	.500	0	0	0	3	2	0	1	2	-8	4	L	63-79
08/19/25	PHO																						L	91-98
08/22/25	at PHO	S	20:57	2	5	.400	1	3	.333	0	0	.000	0	1	1	3	0	0	1	4	-2	5	L	72-81
08/24/25	at DAL																						W	90-81
08/30/25	WAS																						W	99-62
08/31/25	IND																						W	75-63
09/02/25	NYL																						W	66-58
09/04/25	DAL																						W	84-80
09/06/25	MIN																						L	72-78
2025	TTL	26-24	700	99	237	.418	41	101	.406	64	80	.800	18	82	100	77	14	4	49	58	70	303	23-19	
2025	AVG	--	26.9	3.8	9.1	--	1.6	3.9	--	2.5	3.1	--	0.7	3.2	3.8	3.0	0.5	0.2	1.9	2.2	2.7	11.7	--	--

No



# CARLA LEITE

# O

**HT:** 5-9  
**DOB:** 4/16/2004  
**POSITION:** Guard  
**ACQUIRED:** Expansion Draft

**COLLEGE:** Tarbes (France)  
**EXPERIENCE:** Rookie

## QUICK FACTS

- Did not play in the WNBA in 2024, remained overseas
- Played for VILLENEUVE d'Ascq LM of the LFB (France) in 2024-25, ranking first on the team with 16.6 points and 5.5 assists per game, averaged a team-best 17.1 points across seven EuroCup games, and shot 59.6 percent from the field and 35.0 percent from deep
- Led France to the 2023 FIBA U20 Women's European Championship title, leading her team and ranking fourth among all players with 18.4 points per game during the tournament, paced all players with 20 points in the gold-medal game and was named tournament MVP
- After her performance in the French Cup, Leite signed her first professional contract at age 18 in 2022 with Tarbes in the Ligue Féminine de Basketball (LFB), the top women's league in France
- Averaged 11.8 points and 2.9 assists per game and was named the league's best young player during the 2022-23 campaign for Tarbes
- Tallied 15.8 points, 5.5 assists and 2.5 rebounds and was named to the league All-star team in 2023-24

## CARLA LEITE - WNBA REGULAR SEASON STATISTICS

SEASON	TEAM	GP	GS	MIN	FG	FGA	FG%	3PM	3PA	3P%	FT	FTA	FT%	OR	DR	TOT	A	ST	TO	BS	PTS	PPG
2025-26	GSV	35	6	619	86	217	.396	13	73	.178	82	97	.845	9	38	47	72	24	54	3	267	7.6
<b>TOTALS</b>		<b>35</b>	<b>6</b>	<b>619</b>	<b>86</b>	<b>217</b>	<b>.396</b>	<b>13</b>	<b>73</b>	<b>.178</b>	<b>82</b>	<b>97</b>	<b>.845</b>	<b>9</b>	<b>38</b>	<b>47</b>	<b>72</b>	<b>24</b>	<b>54</b>	<b>3</b>	<b>267</b>	<b>7.6</b>
<b>AVERAGE</b>		<b>--</b>	<b>--</b>	<b>17.7</b>	<b>2.5</b>	<b>6.2</b>	<b>--</b>	<b>0.4</b>	<b>2.1</b>	<b>--</b>	<b>2.3</b>	<b>2.8</b>	<b>--</b>	<b>0.3</b>	<b>1.1</b>	<b>1.3</b>	<b>2.1</b>	<b>0.7</b>	<b>1.5</b>	<b>0.1</b>	<b>7.6</b>	<b>--</b>

	REG CAREER HIGHS		2025-26 REG HIGHS
PTS	19 2 times (vs. WAS, 8/30/25)	PTS	19 2 times (vs. WAS, 8/30/25)
FGM	7 at LAS 5/23/25	FGM	7 at LAS 5/23/25
FGA	16 at LAS 6/9/25	FGA	16 at LAS 6/9/25
3FGM	2 3 times (vs. PHO, 8/19/25)	3FGM	2 3 times (vs. PHO, 8/19/25)
3FGA	7 at LAS 6/9/25	3FGA	7 at LAS 6/9/25
FTM	8 vs. WAS 8/30/25	FTM	8 vs. WAS 8/30/25
FTA	9 vs. WAS 8/30/25	FTA	9 vs. WAS 8/30/25
OREB	2 2 times (@ LAS, 6/9/25)	OREB	2 2 times (@ LAS, 6/9/25)
DREB	5 vs. PHO 7/14/25	DREB	5 vs. PHO 7/14/25
TREB	5 2 times (vs. PHO, 7/14/25)	TREB	5 2 times (vs. PHO, 7/14/25)
ASTS	6 vs. WAS 8/30/25	ASTS	6 vs. WAS 8/30/25
STLS	4 vs. PHO 8/19/25	STLS	4 vs. PHO 8/19/25
BLKS	1 3 times (@ CHI, 8/1/25)	BLKS	1 3 times (@ CHI, 8/1/25)
MINS	33 at LVA 8/3/25	MINS	33 at LVA 8/3/25

## 2025-26 GAME-BY-GAME REGULAR SEASON STATISTICS ( GSV )

DATE	OPP	P/S	MIN	FG	FGA	FG%	3PM	3PA	3P%	FT	FTA	FT%	OR	DR	TOT	A	ST	BS	TO	PF	+/-	PTS	W/L	SCORE
05/16/25	LAS	P	11:50	0	3	.000	0	3	.000	2	3	.667	0	1	1	1	0	0	3	2	9	2	L	67-84
05/21/25	WAS	P	20:39	2	7	.286	1	6	.167	5	6	.833	2	0	2	3	0	0	0	4	17	10	W	76-74
05/23/25	at LAS	P	23:18	7	10	.700	2	2	1.000	3	4	.750	1	1	2	3	1	0	1	0	17	19	W	82-73
05/27/25	at NYL	P	18:27	1	7	.143	0	2	.000	2	2	1.000	0	2	2	1	2	0	2	3	-16	4	L	67-95
05/29/25	at NYL	P	8:16	1	3	.333	0	2	.000	0	0	.000	0	0	0	3	0	0	1	0	1	2	L	77-82
06/01/25	MIN	P	3:19	0	2	.000	0	2	.000	0	0	.000	0	0	0	0	0	0	0	0	-9	0	L	75-86
06/05/25	at PHO	P	7:23	0	1	.000	0	0	.000	1	2	.500	0	0	0	1	1	0	2	0	-5	1	L	77-86
06/07/25	LVA	P	1:19	0	0	.000	0	0	.000	0	0	.000	0	0	0	0	0	0	0	0	0	0	W	95-68
06/09/25	at LAS	P	26:04	6	16	.375	0	7	.000	3	3	1.000	2	3	5	3	1	0	1	4	11	15	W	89-81 (OT)
06/14/25	SEA	S	32:02	6	10	.600	0	2	.000	2	2	1.000	0	0	0	3	1	0	4	2	15	14	W	76-70
06/17/25	at DAL	S	27:22	2	6	.333	0	1	.000	4	4	1.000	0	2	2	4	1	1	3	4	2	8	L	71-80
06/19/25	IND	S	19:43	4	7	.571	0	1	.000	0	0	.000	0	1	1	4	1	0	2	2	-6	8	W	88-77
06/22/25	CON																						W	87-63
06/25/25	NYL																						L	78-81
06/27/25	CHI																						W	83-78
06/29/25	SEA																						W	84-57
07/05/25	at MIN																						L	71-82
07/07/25	at ATL																						L	81-90
07/09/25	at IND	P	12:53	1	6	.167	0	5	.000	3	3	1.000	0	0	0	0	1	0	0	2	8	5	W	80-61
07/12/25	at LVA	P	15:01	2	6	.333	0	1	.000	2	2	1.000	0	0	0	2	1	0	4	1	-10	6	L	102-104
07/14/25	PHO	P	15:29	2	8	.250	0	1	.000	2	2	1.000	0	5	5	1	0	0	1	2	5	6	L	77-78
07/16/25	at SEA	P	15:58	2	5	.400	1	3	.333	0	0	.000	0	0	0	2	0	1	1	2	4	5	L	58-67
07/25/25	DAL	P	17:14	4	6	.667	0	1	.000	6	6	1.000	1	1	2	3	1	0	3	3	6	14	W	86-76
07/27/25	at CON	P	20:16	1	4	.250	0	3	.000	3	5	.600	0	1	1	1	1	0	0	1	-20	5	L	64-95
07/29/25	at ATL	P	17:59	4	6	.667	2	2	1.000	2	2	1.000	1	3	4	2	0	0	3	2	3	12	W	77-75
07/31/25	at WAS	P	13:40	1	4	.250	1	3	.333	1	2	.500	0	2	2	1	0	0	2	0	8	4	W	68-67
08/01/25	at CHI	S	21:36	4	11	.364	1	5	.200	2	2	1.000	0	1	1	1	1	1	1	0	-11	11	W	73-66
08/03/25	at LVA	S	33:23	5	15	.333	0	2	.000	4	4	1.000	0	2	2	3	1	0	1	1	-17	14	L	77-101
08/06/25	LVA	P	23:31	4	12	.333	0	4	.000	3	3	1.000	0	3	3	2	2	0	4	3	3	11	L	72-78
08/09/25	LAS	P	15:18	3	7	.429	1	1	1.000	2	3	.667	1	2	3	1	0	0	1	2	9	9	W	72-59
08/11/25	CON	P	14:45	0	3	.000	0	1	.000	0	0	.000	0	0	0	1	1	0	0	1	3	0	W	74-57
08/13/25	at WAS	P	12:37	1	3	.333	1	2	.500	2	2	1.000	0	0	0	1	0	0	1	1	3	5	W	88-83
08/15/25	at CHI	P	19:11	1	3	.333	0	1	.000	5	5	1.000	0	1	1	1	1	0	1	2	26	7	W	90-59
08/17/25	ATL	P	16:18	0	1	.000	0	1	.000	2	2	1.000	0	2	2	2	0	0	1	2	-13	2	L	63-79
08/19/25	PHO	S	32:01	5	12	.417	2	3	.667	3	4	.750	0	1	1	3	4	0	1	1	0	15	L	91-98
08/22/25	at PHO	P	15:58	1	6	.167	0	2	.000	4	5	.800	0	1	1	3	1	0	0	1	-13	6	L	72-81
08/24/25	at DAL																						W	90-81
08/30/25	WAS	P	19:11	5	5	1.000	1	1	1.000	8	9	.889	0	0	0	6	0	0	1	2	29	19	W	99-62
08/31/25	IND	P	20:30	3	7	.429	0	0	.000	1	2	.500	0	2	2	1	1	0	2	2	8	7	W	75-63
09/02/25	NYL	P	15:31	2	5	.400	0	1	.000	2	3	.667	0	0	0	3	0	0	4	0	-10	6	W	66-58
09/04/25	DAL	P	22:06	6	8	.750	0	1	.000	3	5	.600	1	1	2	5	0	0	3	2	28	15	W	84-80
09/06/25	MIN	P	8:55	0	2	.000	0	1	.000	0	0	.000	0	0	0	1	0	0	0	0	-9	0	L	72-78
2025	TTL	35-6	619	86	217	.396	13	73	.178	82	97	.845	9	38	47	72	24	3	54	54	76	267	23-19	
2025	AVG	--	17.7	2.5	6.2	--	0.4	2.1	--	2.3	2.8	--	0.3	1.1	1.3	2.1	0.7	0.1	1.5	1.5	2.2	7.6	--	--



# KATE MARTIN

# 20

**HT:** 6-0  
**DOB:** 6/5/2000  
**POSITION:** Guard  
**ACQUIRED:** Expansion Draft

**COLLEGE:** Iowa  
**EXPERIENCE:** 1 Seasons

### QUICK FACTS

- Appeared in 34 games (two starts), averaging 2.6 points (30.7 FG%, 35.5 3P%, 91.7 FT%), 1.6 rebounds, 0.9 assists in 11.5 minutes per game in 2024 (Las Vegas)
- Led Iowa to a 132-37 (.781) record during her five seasons
- Advanced to four-straight NCAA Tournaments, including the 2023 and 2024 NCAA championship games, and a 2021 Sweet 16 appearance
- Became the first Hawkeye women's player to collect 900+ points, 400+ assists, 120+ steals and 60+ blocks in a career
- Earned 2020, 2021 and 2022 Big Ten Sportsmanship Awards, and named to the 2024 All-Big 10 second team

## KATE MARTIN - WNBA REGULAR SEASON STATISTICS

SEASON	TEAM	GP	GS	MIN	FG	FGA	FG%	3PM	3PA	3P%	FT	FTA	FT%	OR	DR	TOT	A	ST	TO	BS	PTS	PPG
2024-25	LVA	34	2	392	27	88	.307	22	62	.355	11	12	.917	6	48	54	30	7	21	8	87	2.6
2025-26	GSV	40	4	669	86	259	.332	57	180	.317	32	41	.780	18	91	109	40	17	34	4	261	6.5
<b>TOTALS</b>		<b>74</b>	<b>6</b>	<b>1,061</b>	<b>113</b>	<b>347</b>	<b>.326</b>	<b>79</b>	<b>242</b>	<b>.326</b>	<b>43</b>	<b>53</b>	<b>.811</b>	<b>24</b>	<b>139</b>	<b>163</b>	<b>70</b>	<b>24</b>	<b>55</b>	<b>12</b>	<b>348</b>	<b>4.7</b>
<b>AVERAGE</b>		<b>--</b>	<b>--</b>	<b>14.3</b>	<b>1.5</b>	<b>4.7</b>	<b>--</b>	<b>1.1</b>	<b>3.3</b>	<b>--</b>	<b>0.6</b>	<b>0.7</b>	<b>--</b>	<b>0.3</b>	<b>1.9</b>	<b>2.2</b>	<b>0.9</b>	<b>0.3</b>	<b>0.7</b>	<b>0.2</b>	<b>4.7</b>	<b>--</b>

	REG CAREER HIGHS		2025-26 REG HIGHS
PTS	21 vs. NYL 6/25/25	PTS	21 vs. NYL 6/25/25
FGM	7 vs. NYL 6/25/25	FGM	7 vs. NYL 6/25/25
FGA	19 vs. PHO 8/19/25	FGA	19 vs. PHO 8/19/25
3FGM	4 3 times (@ DAL, 8/24/25)	3FGM	4 3 times (@ DAL, 8/24/25)
3FGA	16 vs. PHO 8/19/25	3FGA	16 vs. PHO 8/19/25
FTM	5 vs. SEA 6/14/25	FTM	5 vs. SEA 6/14/25
FTA	5 2 times (vs. SEA, 6/14/25)	FTA	5 2 times (vs. SEA, 6/14/25)
OREB	3 vs. CON 6/22/25	OREB	3 vs. CON 6/22/25
DREB	7 vs. LVA 6/7/25	DREB	7 vs. LVA 6/7/25
TREB	7 2 times (vs. LVA, 6/7/25)	TREB	7 vs. LVA 6/7/25
ASTS	5 vs. WAS 8/30/25	ASTS	5 vs. WAS 8/30/25
STLS	2 4 times (vs. PHO, 8/19/25)	STLS	2 2 times (vs. PHO, 8/19/25)
BLKS	2 2 times (vs. DAL, 7/7/24)	BLKS	1 4 times (@ CHI, 8/1/25)
MINS	35 vs. PHO 8/19/25	MINS	35 vs. PHO 8/19/25

## 2025-26 GAME-BY-GAME REGULAR SEASON STATISTICS ( GSV )

DATE	OPP	P/S	MIN	FG	FGA	FG%	3PM	3PA	3P%	FT	FTA	FT%	OR	DR	TOT	A	ST	BS	TO	PF	+/-	PTS	W/L	SCORE
05/16/25	LAS	S	20:37	0	3	.000	0	1	.000	2	2	1.000	0	0	0	1	0	0	1	0	-9	2	L	67-84
05/21/25	WAS	P	9:22	0	2	.000	0	2	.000	0	0	.000	0	3	3	0	0	1	0	2	-15	0	W	76-74
05/23/25	at LAS	P	10:11	2	5	.400	2	2	1.000	0	0	.000	0	1	1	0	0	0	1	0	9	6	W	82-73
05/27/25	at NYL	P	17:58	3	9	.333	2	7	.286	2	4	.500	0	3	3	0	1	1	1	0	-19	10	L	67-95
05/29/25	at NYL																						L	77-82
06/01/25	MIN	P	19:04	4	8	.500	2	4	.500	4	5	.800	0	4	4	0	0	0	2	1	2	14	L	75-86
06/05/25	at PHO	P	13:38	2	3	.667	2	3	.667	1	2	.500	1	3	4	1	0	0	1	1	4	7	L	77-86
06/07/25	LVA	P	26:07	5	11	.455	2	7	.286	0	0	.000	0	7	7	1	0	0	1	2	30	12	W	95-68
06/09/25	at LAS	P	16:22	0	3	.000	0	2	.000	0	0	.000	0	1	1	0	1	0	1	3	0	0	W	89-81 (OT)
06/14/25	SEA	P	14:59	0	3	.000	0	3	.000	5	5	1.000	0	2	2	1	0	0	0	1	1	5	W	76-70
06/17/25	at DAL	P	7:44	0	1	.000	0	0	.000	0	0	.000	0	0	0	1	0	0	2	0	-7	0	L	71-80
06/19/25	IND	P	20:14	4	7	.571	1	4	.250	0	0	.000	0	5	5	1	1	0	1	1	12	9	W	88-77
06/22/25	CON	P	16:50	0	8	.000	0	2	.000	1	2	.500	3	1	4	2	0	0	0	2	-5	1	W	87-63
06/25/25	NYL	P	24:06	7	15	.467	4	10	.400	3	3	1.000	0	2	2	0	1	0	2	1	-9	21	L	78-81
06/27/25	CHI	P	20:00	4	11	.364	3	7	.429	0	0	.000	0	3	3	0	0	0	0	2	1	11	W	83-78
06/29/25	SEA	P	26:27	4	11	.364	2	6	.333	1	2	.500	0	3	3	2	2	0	2	0	22	11	W	84-57
07/05/25	at MIN	P	15:01	2	7	.286	1	4	.250	0	0	.000	0	2	2	1	0	0	1	2	-7	5	L	71-82
07/07/25	at ATL	P	17:51	4	7	.571	3	5	.600	0	0	.000	0	1	1	1	1	0	1	1	-4	11	L	81-90
07/09/25	at IND	S	18:43	2	7	.286	1	4	.250	0	0	.000	0	2	2	0	0	0	1	2	-2	5	W	80-61
07/12/25	at LVA	P	13:25	3	5	.600	2	4	.500	0	0	.000	0	1	1	0	0	0	0	1	-4	8	L	102-104
07/14/25	PHO	P	4:40	0	0	.000	0	0	.000	0	0	.000	0	0	0	1	1	1	0	0	-1	0	L	77-78
07/16/25	at SEA	P	15:12	1	7	.143	1	6	.167	0	0	.000	0	4	4	2	1	0	3	1	-8	3	L	58-67
07/25/25	DAL																						W	86-76
07/27/25	at CON	P	21:02	3	11	.273	3	10	.300	0	0	.000	0	1	1	1	0	0	1	1	-7	9	L	64-95
07/29/25	at ATL	P	6:12	1	2	.500	1	1	1.000	0	0	.000	0	0	0	1	0	0	1	0	1	3	W	77-75
07/31/25	at WAS	P	22:56	4	10	.400	3	6	.500	3	3	1.000	0	5	5	2	0	1	2	1	3	14	W	68-67
08/01/25	at CHI	S	20:51	1	9	.111	1	7	.143	0	0	.000	1	3	4	2	1	1	2	3	-4	3	W	73-66
08/03/25	at LVA	P	24:33	1	12	.083	0	7	.000	0	0	.000	2	2	4	0	1	0	0	3	-14	2	L	77-101
08/06/25	LVA	P	6:49	0	1	.000	0	0	.000	0	0	.000	0	0	0	1	0	0	0	0	-8	0	L	72-78
08/09/25	LAS	P	1:34	0	2	.000	0	2	.000	0	0	.000	0	0	0	0	0	0	0	1	-4	0	W	72-59
08/11/25	CON	P	15:43	1	5	.200	1	5	.200	0	0	.000	0	4	4	1	1	0	0	3	0	3	W	74-57
08/13/25	at WAS	P	12:18	1	3	.333	1	3	.333	0	0	.000	1	2	3	1	0	0	0	1	1	3	W	88-83
08/15/25	at CHI	P	11:27	1	3	.333	1	2	.500	2	2	1.000	1	1	2	2	0	0	0	1	0	5	W	90-59
08/17/25	ATL	P	21:08	3	6	.500	1	3	.333	0	0	.000	2	1	3	0	0	0	2	1	-11	7	L	63-79
08/19/25	PHO	S	34:32	5	19	.263	4	16	.250	0	0	.000	2	3	5	2	2	0	0	1	-4	14	L	91-98
08/22/25	at PHO	P	11:59	3	6	.500	1	4	.250	0	0	.000	1	3	4	2	0	0	0	1	4	7	L	72-81
08/24/25	at DAL	P	17:27	4	8	.500	4	7	.571	0	0	.000	1	4	5	2	1	0	2	1	-6	12	W	90-81
08/30/25	WAS	P	21:18	2	6	.333	0	4	.000	2	3	.667	1	1	2	5	1	0	0	1	22	6	W	99-62
08/31/25	IND	P	15:19	3	4	.750	3	3	1.000	1	1	1.000	0	2	2	0	0	0	0	1	8	10	W	75-63
09/02/25	NYL	P	14:47	3	7	.429	3	6	.500	2	4	.500	0	3	3	0	0	0	1	3	6	11	W	66-58
09/04/25	DAL	P	20:15	2	6	.333	2	6	.333	3	3	1.000	1	3	4	1	1	0	1	1	11	9	W	84-80
09/06/25	MIN	P	20:24	1	6	.167	0	5	.000	0	0	.000	1	5	6	2	0	0	1	0	-7	2	L	72-78
2025	TTL	40-4	669	86	259	.332	57	180	.317	32	41	.780	18	91	109	40	17	4	34	47	-18	261	23-19	
2025	AVG	--	16.7	2.1	6.5	--	1.4	4.5	--	0.8	1.0	--	0.5	2.3	2.7	1.0	0.4	0.1	0.8	1.2	-0.5	6.5	--	--

No



# ILIANA RUPERT

# 12

**HT:** 6-4  
**DOB:** 7/12/2001  
**POSITION:** Center  
**ACQUIRED:** Expansion Draft

**EXPERIENCE:** 3 Seasons

### QUICK FACTS

- Selected by Golden State from Atlanta in the 2024 Expansion Draft; sat out the 2024 regular season to focus on the Olympic Games
- Represented the French National Team at the FIBA EuroBasket Women 2025
- Appeared in 20 games in 2023 for the Atlanta Dream, averaging 1.8 points, 2.0 rebounds and 0.5 assists per game.
- WNBA Champion in 2022 with Las Vegas
- Suited up for CBK Mersin of the KBSL (Turkey) in 2024-25, leading the team to a ING Women's Turkish Cup title while averaging 17.9 points, 8.6 rebounds and 3.1 assists per contest
- Won Silver at the 2024 Olympic Games for France, and Bronze in 2021 Tokyo Olympics
- Daughter of Thierry Rupert, former power forward of the French national team
- Brother is Rayan Rupert of the Portland Trail Blazers

## ILIANA RUPERT - WNBA REGULAR SEASON STATISTICS

SEASON	TEAM	GP	GS	MIN	FG	FGA	FG%	3PM	3PA	3P%	FT	FTA	FT%	OR	DR	TOT	A	ST	TO	BS	PTS	PPG
2022-23	LVA	17	0	223	25	54	.463	14	38	.368	1	3	.333	11	28	39	15	7	9	0	65	3.8
2023-24	ATL	20	0	158	12	34	.353	6	22	.273	5	8	.625	7	32	39	10	7	10	7	35	1.8
2025-26	GSV	19	9	444	62	140	.443	42	94	.447	15	16	.938	17	53	70	30	11	16	10	181	9.5
<b>TOTALS</b>		<b>56</b>	<b>9</b>	<b>826</b>	<b>99</b>	<b>228</b>	<b>.434</b>	<b>62</b>	<b>154</b>	<b>.403</b>	<b>21</b>	<b>27</b>	<b>.778</b>	<b>35</b>	<b>113</b>	<b>148</b>	<b>55</b>	<b>25</b>	<b>35</b>	<b>17</b>	<b>281</b>	<b>5.0</b>
<b>AVERAGE</b>		<b>--</b>	<b>--</b>	<b>14.7</b>	<b>1.8</b>	<b>4.1</b>	<b>--</b>	<b>1.1</b>	<b>2.8</b>	<b>--</b>	<b>0.4</b>	<b>0.5</b>	<b>--</b>	<b>0.6</b>	<b>2.0</b>	<b>2.6</b>	<b>1.0</b>	<b>0.4</b>	<b>0.6</b>	<b>0.3</b>	<b>5.0</b>	<b>--</b>

	REG CAREER HIGHS		2025-26 REG HIGHS
PTS	21 vs. IND 8/31/25	PTS	21 vs. IND 8/31/25
FGM	8 vs. IND 8/31/25	FGM	8 vs. IND 8/31/25
FGA	12 3 times (vs. IND, 8/31/25)	FGA	12 3 times (vs. IND, 8/31/25)
3FGM	5 2 times (vs. IND, 8/31/25)	3FGM	5 2 times (vs. IND, 8/31/25)
3FGA	9 2 times (vs. MIN, 9/6/25)	3FGA	9 2 times (vs. MIN, 9/6/25)
FTM	4 2 times (vs. MIN, 9/6/25)	FTM	4 2 times (vs. MIN, 9/6/25)
FTA	4 3 times (vs. MIN, 9/6/25)	FTA	4 2 times (vs. MIN, 9/6/25)
OREB	3 3 times (@ LVA, 8/3/25)	OREB	3 3 times (@ LVA, 8/3/25)
DREB	7 vs. PHO 7/25/23	DREB	6 2 times (@ DAL, 8/24/25)
TREB	8 at LVA 8/3/25	TREB	8 at LVA 8/3/25
ASTS	4 vs. DAL 9/4/25	ASTS	4 vs. DAL 9/4/25
STLS	2 5 times (vs. MIN, 9/6/25)	STLS	2 3 times (vs. MIN, 9/6/25)
BLKS	3 vs. DAL 9/4/25	BLKS	3 vs. DAL 9/4/25
MINs	36 at DAL 8/24/25	MINs	36 at DAL 8/24/25

## 2025-26 GAME-BY-GAME REGULAR SEASON STATISTICS ( GSV )

DATE	OPP	P/S	MIN	FG	FGA	FG%	3PM	3PA	3P%	FT	FTA	FT%	OR	DR	TOT	A	ST	BS	TO	Pf	+/-	PTS	W/L	SCORE
07/25/25	DAL	P	14:44	3	7	.429	2	4	.500	1	1	1.000	3	2	5	2	1	0	1	3	1	9	W	86-76
07/27/25	at CON	P	22:11	5	7	.714	3	4	.750	0	0	.000	1	3	4	1	1	1	4	2	-15	13	L	64-95
07/29/25	at ATL	P	16:30	0	4	.000	0	3	.000	0	0	.000	3	1	4	2	0	0	0	3	0	0	W	77-75
07/31/25	at WAS	S	33:07	3	7	.429	3	5	.600	2	2	1.000	1	6	7	0	2	0	3	4	7	11	W	68-67
08/01/25	at CHI	P	24:11	5	8	.625	4	5	.800	0	0	.000	0	1	1	0	1	0	0	2	5	14	W	73-66
08/03/25	at LVA	S	22:59	5	12	.417	3	8	.375	4	4	1.000	3	5	8	1	0	0	1	2	-11	17	L	77-101
08/06/25	LVA	P	12:19	1	2	.500	0	1	.000	0	0	.000	0	1	1	0	0	0	1	2	-14	2	L	72-78
08/09/25	LAS	P	13:07	1	6	.167	1	6	.167	1	2	.500	0	1	1	2	0	0	0	3	4	4	W	72-59
08/11/25	CON	P	18:10	4	7	.571	2	4	.500	0	0	.000	0	1	1	1	1	0	0	2	2	10	W	74-57
08/13/25	at WAS	P	25:22	1	6	.167	0	4	.000	1	1	1.000	0	2	2	3	0	0	1	4	9	3	W	88-83
08/15/25	at CHI	P	20:07	5	6	.833	4	4	1.000	0	0	.000	0	2	2	3	0	0	1	2	21	14	W	90-59
08/17/25	ATL	P	11:54	1	4	.250	1	4	.250	0	0	.000	0	3	3	0	0	1	0	1	1	3	L	63-79
08/19/25	PHO																						L	91-98
08/22/25	at PHO	S	26:11	3	9	.333	3	6	.500	0	0	.000	1	4	5	2	0	2	0	3	7	9	L	72-81
08/24/25	at DAL	S	36:22	5	12	.417	5	9	.556	2	2	1.000	0	6	6	2	0	1	0	3	17	17	W	90-81
08/30/25	WAS	S	27:23	3	6	.500	1	4	.250	0	0	.000	0	5	5	3	2	0	1	1	36	7	W	99-62
08/31/25	IND	S	32:15	8	12	.667	5	8	.625	0	0	.000	1	0	1	1	0	1	1	3	15	21	W	75-63
09/02/25	NYL	S	24:08	1	5	.200	0	2	.000	0	0	.000	2	5	7	1	0	1	1	3	7	2	W	66-58
09/04/25	DAL	S	29:47	4	10	.400	2	4	.500	0	0	.000	1	0	1	4	1	3	1	1	-10	10	W	84-80
09/06/25	MIN	S	33:39	4	10	.400	3	9	.333	4	4	1.000	1	5	6	2	2	0	0	0	-5	15	L	72-78
2025	TTL		19-9	444	62	140	.443	42	94	.447	15	16	.938	17	53	70	30	11	10	16	44	77	181	13-7
2025	AVG		--	23.4	3.3	7.4	--	2.2	4.9	--	0.8	0.8	--	0.9	2.8	3.7	1.6	0.6	0.5	0.8	2.3	4.1	9.5	--

No



# JANELLE SALAÜN

# 13

**HT:** 6-2  
**DOB:** 9/5/2001  
**POSITION:** Forward

**EXPERIENCE:** Rookie

### QUICK FACTS

- Top five among rookies in PPG and RPG
- Represented the French National Team at the FIBA EuroBasket Women 2025
- Competed in the Italy-Serie A1 for Beretta Famila Schio in 2024-25, averaging 13.2 points, including 14.4 in 14 EuroLeague games
- Won the 2024-25 Lega Basket Femminile Championship for Beretta Famila Schio in Italy, scoring 11 points and adding eight rebounds in the title game.
- Started for France in their silver medal run at the 2024 Paris Olympics
- Averaged 14.8 points per game and is shooting 37.3 percent from the three-point line for Famila Schio in Italian Serie A1
- Led Villeneuve-d'Ascq to the 2024 French League National Championship
- Brother, Tidjane, plays for the Charlotte Hornets

## JANELLE SALAÜN - WNBA REGULAR SEASON STATISTICS

SEASON	TEAM	GP	GS	MIN	FG	FGA	FG%	3PM	3PA	3P%	FT	FTA	FT%	OR	DR	TOT	A	ST	TO	BS	PTS	PPG
2025-26	GSV	34	31	909	138	337	.409	58	159	.365	46	56	.821	27	139	166	41	20	52	3	380	11.2
<b>TOTALS</b>		<b>34</b>	<b>31</b>	<b>909</b>	<b>138</b>	<b>337</b>	<b>.409</b>	<b>58</b>	<b>159</b>	<b>.365</b>	<b>46</b>	<b>56</b>	<b>.821</b>	<b>27</b>	<b>139</b>	<b>166</b>	<b>41</b>	<b>20</b>	<b>52</b>	<b>3</b>	<b>380</b>	<b>11.2</b>
<b>AVERAGE</b>		<b>--</b>	<b>--</b>	<b>26.7</b>	<b>4.1</b>	<b>9.9</b>	<b>--</b>	<b>1.7</b>	<b>4.7</b>	<b>--</b>	<b>1.4</b>	<b>1.6</b>	<b>--</b>	<b>0.8</b>	<b>4.1</b>	<b>4.9</b>	<b>1.2</b>	<b>0.6</b>	<b>1.5</b>	<b>0.1</b>	<b>11.2</b>	<b>--</b>

	REG CAREER HIGHS	2025-26 REG HIGHS
PTS	21 at LAS 6/9/25	21 at LAS 6/9/25
FGM	7 4 times (vs. WAS, 8/30/25)	7 4 times (vs. WAS, 8/30/25)
FGA	19 at NYL 5/29/25	19 at NYL 5/29/25
3FGM	4 3 times (vs. WAS, 8/30/25)	4 3 times (vs. WAS, 8/30/25)
3FGA	8 5 times (vs. MIN, 9/6/25)	8 5 times (vs. MIN, 9/6/25)
FTM	5 vs. LVA 8/6/25	5 vs. LVA 8/6/25
FTA	5 2 times (vs. DAL, 9/4/25)	5 2 times (vs. DAL, 9/4/25)
OREB	4 at NYL 5/29/25	4 at NYL 5/29/25
DREB	9 at NYL 5/29/25	9 at NYL 5/29/25
TREB	13 at NYL 5/29/25	13 at NYL 5/29/25
ASTS	3 5 times (@ CHI, 8/15/25)	3 5 times (@ CHI, 8/15/25)
STLS	3 vs. DAL 7/25/25	3 vs. DAL 7/25/25
BLKS	1 3 times (@ WAS, 7/31/25)	1 3 times (@ WAS, 7/31/25)
MIN	39 at LAS 6/9/25	39 at LAS 6/9/25

## 2025-26 GAME-BY-GAME REGULAR SEASON STATISTICS ( GSV )

DATE	OPP	P/S	MIN	FG	FGA	FG%	3PM	3PA	3P%	FT	FTA	FT%	OR	DR	TOT	A	ST	BS	TO	PF	+/-	PTS	W/L	SCORE
05/16/25	LAS														Inactive - Rest								L	67-84
05/21/25	WAS	S	28:25	4	11	.364	1	4	.250	1	1	1.000	0	4	4	0	1	0	3	2	0	10	W	76-74
05/23/25	at LAS	S	30:26	5	11	.455	4	8	.500	4	4	1.000	0	8	8	1	2	1	-2	18	W	82-73		
05/27/25	at NYL	S	28:14	3	12	.250	3	5	.600	0	0	.000	2	4	6	2	0	0	4	1	-16	9	L	67-95
05/29/25	at NYL	S	30:27	7	19	.368	3	8	.375	1	2	.500	4	9	13	3	1	0	2	5	0	18	L	77-82
06/01/25	MIN	S	27:58	2	10	.200	1	7	.143	0	0	.000	2	4	6	3	0	0	1	2	9	5	L	75-86
06/05/25	at PHO	S	22:10	4	6	.667	1	2	.500	0	0	.000	0	0	0	1	0	0	2	2	-5	9	L	77-86
06/07/25	LVA	S	20:46	2	7	.286	0	2	.000	0	0	.000	0	2	2	0	0	0	1	2	14	4	W	95-68
06/09/25	at LAS	S	38:39	7	11	.636	3	4	.750	4	4	1.000	2	6	8	1	0	0	2	5	17	21	W	89-81 (OT)
07/05/25	at MIN	P	9:25	0	2	.000	0	2	.000	0	0	.000	0	1	1	0	0	0	2	1	-10	0	L	71-82
07/07/25	at ATL	P	3:36	0	2	.000	0	2	.000	0	0	.000	0	0	0	0	0	0	0	2	-9	0	L	81-90
07/09/25	at IND	P	25:04	2	11	.182	0	3	.000	0	0	.000	1	6	7	1	0	0	0	1	15	4	W	80-61
07/12/25	at LVA	S	20:56	6	13	.462	1	5	.200	3	4	.750	2	4	6	2	1	0	1	5	1	16	L	102-104
07/14/25	PHO	S	18:44	4	12	.333	1	4	.250	3	3	1.000	2	1	3	1	1	0	0	0	-9	12	L	77-78
07/16/25	at SEA	S	13:59	3	9	.333	1	4	.250	3	4	.750	0	4	4	0	0	0	0	0	0	10	L	58-67
07/25/25	DAL	S	34:05	6	14	.429	3	8	.375	1	1	1.000	0	7	7	3	3	0	3	0	17	16	W	86-76
07/27/25	at CON	S	24:50	4	9	.444	1	5	.200	0	2	.000	1	2	3	0	0	1	1	3	-19	9	L	64-95
07/29/25	at ATL	S	23:12	3	8	.375	0	4	.000	0	0	.000	0	1	1	0	0	0	1	4	-8	6	W	77-75
07/31/25	at WAS	S	36:49	3	9	.333	1	2	.500	2	2	1.000	0	4	4	0	0	1	2	4	9	9	W	68-67
08/01/25	at CHI	S	35:19	6	14	.429	2	4	.500	2	3	.667	1	8	9	2	1	0	1	3	7	16	W	73-66
08/03/25	at LVA	S	16:09	2	6	.333	1	3	.333	1	2	.500	2	1	3	0	1	0	1	1	-24	6	L	77-101
08/06/25	LVA	S	29:58	4	11	.364	0	3	.000	5	5	1.000	1	2	3	3	1	0	1	6	-17	13	L	72-78
08/09/25	LAS	S	32:03	4	9	.444	3	8	.375	0	0	.000	0	8	8	1	2	0	1	1	13	11	W	72-59
08/11/25	CON	S	26:40	6	10	.600	4	7	.571	0	0	.000	1	0	1	2	0	0	1	3	13	16	W	74-57
08/13/25	at WAS	S	29:21	5	9	.556	1	3	.333	0	0	.000	1	3	4	1	1	0	3	2	2	11	W	88-83
08/15/25	at CHI	S	28:47	5	11	.455	3	7	.429	2	2	1.000	0	6	6	3	1	0	1	1	15	15	W	90-59
08/17/25	ATL	S	28:52	2	7	.286	1	4	.250	0	0	.000	0	5	5	1	1	0	1	1	-21	5	L	63-79
08/19/25	PHO	S	36:52	5	11	.455	2	4	.500	1	1	1.000	0	6	6	0	1	0	2	2	-3	13	L	91-98
08/22/25	at PHO	S	28:59	7	12	.583	1	5	.200	0	1	.000	0	2	2	1	1	0	1	0	-8	15	L	72-81
08/24/25	at DAL	S	25:10	3	8	.375	1	3	.333	2	2	1.000	2	7	9	2	0	0	0	1	12	9	W	90-81
08/30/25	WAS	S	28:55	7	11	.636	4	7	.571	2	2	1.000	0	6	6	1	0	0	4	1	25	20	W	99-62
08/31/25	IND	S	28:59	3	8	.375	3	5	.600	1	2	.500	0	4	4	2	0	0	2	2	4	10	W	75-63
09/02/25	NYL	S	23:35	3	10	.300	2	5	.400	2	2	1.000	0	3	3	0	0	0	1	2	-2	10	W	66-58
09/04/25	DAL	S	37:10	6	10	.600	3	4	.750	4	5	.800	0	6	6	1	0	0	2	2	-2	19	W	84-80
09/06/25	MIN	S	34:04	5	14	.357	3	8	.375	2	2	1.000	3	5	8	2	1	0	4	3	-7	15	L	72-78
2025	TTL		34-31	909	138	337	.409	58	159	.365	46	56	.821	27	139	166	41	20	3	52	69	6	380	18-17
2025	AVG		--	26.7	4.1	9.9	--	1.7	4.7	--	1.4	1.6	--	0.8	4.1	4.9	1.2	0.6	0.1	1.5	2.0	0.2	11.2	--



# KAYLA THORNTON

# 5

**HT:** 6-1  
**DOB:** 10/20/1992  
**POSITION:** Forward  
**ACQUIRED:** Expansion Draft

**COLLEGE:** Texas-El Paso  
**EXPERIENCE:** 9 Seasons

### QUICK FACTS

- 2025 WNBA All-Star selection, the first in Golden State history and the first undrafted player to become a WNBA All-Star since 2019, and just the seventh undrafted player in league history to be named an All-Star
- Western Conference Player of the Week for Week 4 this season after averaging 20.0 points, 11.5 rebounds and 1.0 assist while shooting 43.8 percent (14-32) from the field, and recording two double-doubles for her first-ever WNBA Player of the Week award
- WNBA Champion in 2024 (New York)
- Ranked second in the league in free throw percentage (.931) in 2019 (Dallas)
- Ranks first all-time at UTEP in career made field goals (600), points (1,679), rebounds (1,032) and double-doubles (40), is second in steals (217); named an AP Honorable Mention All-American in 2014, three-time C-USA All-Conference honoree, two-time C-USA All-Defensive Team member
- Has played professionally in Australia, Egypt, Israel, Italy, Puerto Rico, Russia, South Korea and Turkey

## KAYLA THORNTON - WNBA REGULAR SEASON STATISTICS

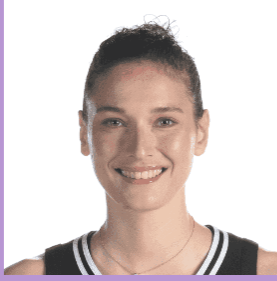
SEASON	TEAM	GP	GS	MIN	FG	FGA	FG%	3PM	3PA	3P%	FT	FTA	FT%	OR	DR	TOT	A	ST	TO	BS	PTS	PPG
2015-16	WAS	10	0	88	9	27	.333	0	1	.000	4	6	.667	12	9	21	1	3	5	3	22	2.2
2017-18	DAL	34	1	586	73	177	.412	17	61	.279	68	85	.800	40	72	112	29	22	24	8	231	6.8
2018-19	DAL	34	32	971	114	255	.447	43	121	.355	43	50	.860	44	93	137	62	35	37	12	314	9.2
2019-20	DAL	27	25	822	99	289	.343	28	103	.272	54	58	.931	49	94	143	48	24	44	8	280	10.4
2020-21	DAL	22	14	557	54	127	.425	25	72	.347	28	32	.875	32	81	113	17	20	25	4	161	7.3
2021-22	DAL	31	25	857	83	197	.421	22	63	.349	45	53	.849	65	108	173	45	26	30	7	233	7.5
2022-23	DAL	36	35	1,050	97	207	.469	25	77	.325	68	82	.829	65	146	211	65	39	42	20	287	8.0
2023-24	NYL	40	0	693	65	150	.433	25	80	.313	23	30	.767	48	93	141	27	28	20	10	178	4.5
2024-25	NYL	40	11	809	77	203	.379	45	126	.357	22	26	.846	39	64	103	27	29	23	9	221	5.5
2025-26	GSV	22	22	662	100	276	.362	40	142	.282	68	82	.829	40	114	154	33	29	36	5	308	14.0
<b>TOTALS</b>		<b>296</b>	<b>165</b>	<b>7,096</b>	<b>771</b>	<b>1,908</b>	<b>.404</b>	<b>270</b>	<b>846</b>	<b>.319</b>	<b>423</b>	<b>504</b>	<b>.839</b>	<b>434</b>	<b>874</b>	<b>1,308</b>	<b>354</b>	<b>255</b>	<b>286</b>	<b>86</b>	<b>2,235</b>	<b>7.6</b>
<b>AVERAGE</b>		<b>--</b>	<b>--</b>	<b>24.0</b>	<b>2.6</b>	<b>6.4</b>	<b>--</b>	<b>0.9</b>	<b>2.9</b>	<b>--</b>	<b>1.4</b>	<b>1.7</b>	<b>--</b>	<b>1.5</b>	<b>3.0</b>	<b>4.4</b>	<b>1.2</b>	<b>0.9</b>	<b>1.0</b>	<b>0.3</b>	<b>7.6</b>	<b>--</b>

	REG CAREER HIGHS		2025-26 REG HIGHS
PTS	29 vs. CHI 6/27/25	PTS	29 vs. CHI 6/27/25
FGM	9 at ATL 7/30/22	FGM	8 2 times (vs. CHI, 6/27/25)
FGA	18 at LAS 6/9/25	FGA	18 at LAS 6/9/25
3FGM	6 vs. LAS 6/22/24	3FGM	5 vs. IND 6/19/25
3FGA	11 vs. WAS 5/31/24	3FGA	10 at IND 7/9/25
FTM	10 vs. IND 8/6/22	FTM	9 vs. CHI 6/27/25
FTA	12 vs. IND 8/6/22	FTA	10 vs. CHI 6/27/25
OREB	6 2 times (@ LVA, 6/5/22)	OREB	5 2 times (vs. CON, 6/22/25)
DREB	10 2 times (vs. SEA, 6/14/25)	DREB	10 vs. SEA 6/14/25
TREB	15 at LVA 6/5/22	TREB	12 vs. SEA 6/14/25
ASTS	6 vs. NYL 7/17/18	ASTS	4 vs. PHO 7/14/25
STLS	5 vs. WAS 5/31/24	STLS	4 2 times (@ NYL, 5/27/25)
BLKS	3 2 times (vs. PHO, 6/25/22)	BLKS	1 5 times (@ SEA, 7/16/25)
MINS	40 vs. IND 8/6/22	MINS	38 vs. PHO 7/14/25

## 2025-26 GAME-BY-GAME REGULAR SEASON STATISTICS ( GSV )

DATE	OPP	P/S	MIN	FG	FGA	FG%	3PM	3PA	3P%	FT	FTA	FT%	OR	DR	TOT	A	ST	BS	TO	PF	+/-	PTS	W/L	SCORE
05/16/25	LAS	S	34:17	3	11	.273	0	6	.000	0	0	.000	1	3	4	1	1	0	1	2	-17	6	L	67-84
05/21/25	WAS	S	26:52	5	14	.357	2	8	.250	6	6	1.000	0	5	5	1	2	1	1	4	19	18	W	76-74
05/23/25	at LAS	S	30:15	4	15	.267	1	9	.111	5	5	1.000	4	6	10	1	4	1	5	2	1	14	W	82-73
05/27/25	at NYL	S	28:22	3	10	.300	2	5	.400	5	7	.714	1	5	6	0	4	0	2	2	-15	13	L	67-95
05/29/25	at NYL	S	30:46	4	11	.364	0	4	.000	2	2	1.000	3	3	6	1	1	0	2	2	1	10	L	77-82
06/01/25	MIN	S	27:17	4	8	.500	1	3	.333	2	2	1.000	1	5	6	2	3	0	1	1	-2	11	L	75-86
06/05/25	at PHO	S	31:33	4	13	.308	1	7	.143	1	3	.333	1	2	3	1	1	0	3	1	-1	10	L	77-86
06/07/25	LVA	S	35:30	8	16	.500	4	8	.500	2	2	1.000	5	6	11	2	2	0	2	2	17	22	W	95-68
06/09/25	at LAS	S	34:59	7	18	.389	2	8	.250	2	3	.667	3	8	11	1	1	0	0	2	-1	18	W	89-81 (OT)
06/14/25	SEA	S	35:59	7	14	.500	3	9	.333	5	6	.833	2	10	12	1	0	0	3	4	-2	22	W	76-70
06/17/25	at DAL	S	35:28	5	11	.455	2	6	.333	5	6	.833	0	5	5	0	1	1	4	3	-3	17	L	71-80
06/19/25	IND	S	19:54	5	11	.455	5	8	.625	1	4	.250	2	4	6	0	1	0	1	4	3	16	W	88-77
06/22/25	CON	S	22:12	6	14	.429	2	6	.333	7	7	1.000	5	3	8	2	2	0	0	1	31	21	W	87-63
06/25/25	NYL	S	34:22	5	12	.417	1	5	.200	0	0	.000	1	6	7	3	1	0	1	2	-4	11	L	78-81
06/27/25	CHI	S	30:03	8	15	.533	4	7	.571	9	10	.900	0	6	6	1	1	0	3	4	5	29	W	83-78
06/29/25	SEA	S	19:03	1	9	.111	0	5	.000	0	0	.000	1	4	5	0	0	0	2	1	7	2	W	84-57
07/05/25	at MIN	S	33:49	6	15	.400	1	7	.143	0	0	.000	3	7	10	3	2	0	0	1	-8	13	L	71-82
07/07/25	at ATL	S	33:37	5	14	.357	2	7	.286	3	3	1.000	0	6	6	3	1	0	1	3	-13	15	L	81-90
07/09/25	at IND	S	27:19	4	15	.267	4	10	.400	6	8	.750	3	5	8	2	1	0	0	1	12	18	W	80-61
07/12/25	at LVA	S	27:46	3	9	.333	1	4	.250	3	3	1.000	3	6	9	2	0	1	1	2	-2	10	L	102-104
07/14/25	PHO	S	38:15	2	12	.167	2	8	.250	2	3	.667	1	5	6	4	0	0	2	4	-7	8	L	77-78
07/16/25	at SEA	S	24:48	1	9	.111	0	2	.000	2	2	1.000	0	4	4	2	0	1	1	4	-1	4	L	58-67
07/25/25	DAL																						W	86-76
07/27/25	at CON																						L	64-95
07/29/25	at ATL																						W	77-75
07/31/25	at WAS																						W	68-67
08/01/25	at CHI																						W	73-66
08/03/25	at LVA																						L	77-101
08/06/25	LVA																						L	72-78
08/09/25	LAS																						W	72-59
08/11/25	CON																						W	74-57
08/13/25	at WAS																						W	88-83
08/15/25	at CHI																						W	90-59
08/17/25	ATL																						L	63-79
08/19/25	PHO																						L	91-98
08/22/25	at PHO																						L	72-81
08/24/25	at DAL																						W	90-81
08/30/25	WAS																						W	99-62
08/31/25	IND																						W	75-63
09/02/25	NYL																						W	66-58
09/04/25	DAL																						W	84-80
09/06/25	MIN																						L	72-78
2025	TTL	22-22	662	100	276	.362	40	142	.282	68	82	.829	40	114	154	33	29	5	36	52	20	308	23-19	
2025	AVG	--	30.1	4.5	12.5	--	1.8	6.5	--	3.1	3.7	--	1.8	5.2	7.0	1.5	1.3	0.2	1.6	2.4	0.9	14.0	--	--

No



# CECILIA ZANDALASINI

# 24

**HT:** 6-2  
**DOB:** 3/16/1996  
**POSITION:** Forward  
**ACQUIRED:** Expansion Draft

**COLLEGE:** PF Schio (Italy)  
**EXPERIENCE:** 3 Seasons

### QUICK FACTS

- Represented the Italian National Team at FIBA Women's EuroBasket 2025
- WNBA Champion in 2017 (Minnesota)
- Played 10 games for Galatasaray (Gala) of the KBSL (Turkey) in 2024-25, averaging 8.7 points, 3.9 rebounds and 2.3 assists
- Represented Italy at EuroBasket 2017 where she earned All-Star Five honors after averaging 19.0 ppg and 9.6 rpg in seven games (30.9 mpg). Ranked second in the tournament in scoring, third in rebounding, third in FG percentage (51.0%), second in three-point percentage (50.0%), second in FT percentage (88.9%) and second in double-doubles with three
- Named Most Valuable Player of the 2016 U20 European Championship, guiding Italy to a silver medal after tallying 31 points and 11 rebounds in the quarterfinal win over Latvia. Scored 27 points in the semifinal win over Serbia, and 28 points and 10 rebounds in the gold-medal game loss to Spain. Ranked first in scoring (22.0 ppg), sixth in rebounding (9.0 rpg), second in steals (2.86 spg) and third in blocks (1.43 bpg) for the tournament
- Was Italy's top scorer at the 2013 U18 European Championships, netting 13.9 ppg (38.8 FG%) and 6.3 rpg in nine contests

## CECILIA ZANDALASINI - WNBA REGULAR SEASON STATISTICS

SEASON	TEAM	GP	GS	MIN	FG	FGA	FG%	3PM	3PA	3P%	FT	FTA	FT%	OR	DR	TOT	A	ST	TO	BS	PTS	PPG
2017-18	MIN	3	0	19	1	4	.250	0	0	.000	0	0	.000	0	1	1	0	0	2	0	2	0.7
2018-19	MIN	29	6	478	61	149	.409	23	60	.383	21	25	.840	6	48	54	32	8	31	1	166	5.7
2024-25	MIN	40	0	487	67	148	.453	31	70	.443	18	29	.621	5	41	46	43	15	31	9	183	4.6
2025-26	GSV	17	10	423	64	138	.464	37	83	.446	26	29	.897	5	48	53	32	16	20	4	191	11.2
<b>TOTALS</b>		<b>89</b>	<b>16</b>	<b>1,407</b>	<b>193</b>	<b>439</b>	<b>.440</b>	<b>91</b>	<b>213</b>	<b>.427</b>	<b>65</b>	<b>83</b>	<b>.783</b>	<b>16</b>	<b>138</b>	<b>154</b>	<b>107</b>	<b>39</b>	<b>84</b>	<b>14</b>	<b>542</b>	<b>6.1</b>
<b>AVERAGE</b>		<b>--</b>	<b>--</b>	<b>15.8</b>	<b>2.2</b>	<b>4.9</b>	<b>--</b>	<b>1.0</b>	<b>2.4</b>	<b>--</b>	<b>0.7</b>	<b>0.9</b>	<b>--</b>	<b>0.2</b>	<b>1.6</b>	<b>1.7</b>	<b>1.2</b>	<b>0.4</b>	<b>0.9</b>	<b>0.2</b>	<b>6.1</b>	<b>--</b>

REG CAREER HIGHS		2025-26 REG HIGHS	
PTS	20 2 times (@ CHI, 8/15/25)	PTS	20 2 times (@ CHI, 8/15/25)
FGM	7 3 times (@ CHI, 8/15/25)	FGM	7 3 times (@ CHI, 8/15/25)
FGA	14 vs. CON 8/11/25	FGA	14 vs. CON 8/11/25
3FGM	6 at WAS 8/13/25	3FGM	6 at WAS 8/13/25
3FGA	8 3 times (@ WAS, 8/13/25)	3FGA	8 3 times (@ WAS, 8/13/25)
FTM	8 at CON 6/9/18	FTM	5 vs. LVA 6/7/25
FTA	8 at CON 6/9/18	FTA	5 vs. LVA 6/7/25
OREB	1 16 times (vs. ATL, 8/17/25)	OREB	1 5 times (vs. ATL, 8/17/25)
DREB	8 at ATL 7/29/25	DREB	8 at ATL 7/29/25
TREB	8 at ATL 7/29/25	TREB	8 at ATL 7/29/25
ASTS	4 2 times (@ WAS, 8/13/25)	ASTS	4 2 times (@ WAS, 8/13/25)
STLS	4 2 times (@ CHI, 8/15/25)	STLS	4 2 times (@ CHI, 8/15/25)
BLKS	2 2 times (vs. LAS, 8/9/25)	BLKS	2 vs. LAS 8/9/25
MINS	36 vs. WAS 8/19/18	MINS	35 at WAS 8/13/25

## 2025-26 GAME-BY-GAME REGULAR SEASON STATISTICS ( GSV )

DATE	OPP	P/S	MIN	FG	FGA	FG%	3PM	3PA	3P%	FT	FTA	FT%	OR	DR	TOT	A	ST	BS	TO	PF	+/-	PTS	W/L	SCORE
05/16/25	LAS																						L	67-84
05/21/25	WAS																						W	76-74
05/23/25	at LAS																						W	82-73
05/27/25	at NYL																						L	67-95
05/29/25	at NYL	P	14:49	3	8	.375	2	6	.333	1	2	.500	0	1	1	2	0	0	2	2	-1	9	L	77-82
06/01/25	MIN	P	17:03	1	3	.333	1	3	.333	0	0	.000	0	2	2	0	0	0	2	1	-22	3	L	75-86
06/05/25	at PHO	S	30:20	4	8	.500	2	4	.500	0	0	.000	1	4	5	1	4	1	1	5	-18	10	L	77-86
06/07/25	LVA	S	29:43	5	9	.556	3	4	.750	5	5	1.000	0	1	1	3	1	0	2	4	12	18	W	95-68
07/05/25	at MIN	P	9:17	0	3	.000	0	2	.000	2	2	1.000	0	0	0	0	0	0	1	0	-8	2	L	71-82
07/07/25	at ATL																						L	81-90
07/09/25	at IND																						W	80-61
07/12/25	at LVA	P	18:14	5	9	.556	2	5	.400	0	0	.000	0	0	0	1	0	0	1	0	7	12	L	102-104
07/14/25	PHO	P	19:42	3	8	.375	2	4	.500	0	0	.000	0	3	3	3	0	0	1	2	14	8	L	77-78
07/16/25	at SEA	P	25:22	3	10	.300	2	8	.250	4	4	1.000	1	3	4	0	0	1	1	4	-6	12	L	58-67
07/25/25	DAL	S	30:13	3	7	.429	2	4	.500	2	2	1.000	0	3	3	4	1	0	3	3	16	10	W	86-76
07/27/25	at CON	S	15:07	0	1	.000	0	1	.000	0	0	.000	0	2	2	1	1	0	3	0	-19	0	L	64-95
07/29/25	at ATL	P	29:51	7	11	.636	3	5	.600	1	2	.500	0	8	8	2	1	0	0	3	8	18	W	77-75
07/31/25	at WAS																						W	68-67
08/01/25	at CHI																						W	73-66
08/03/25	at LVA																						L	77-101
08/06/25	LVA	S	24:01	2	8	.250	1	6	.167	2	2	1.000	1	2	3	1	1	0	2	1	8	7	L	72-78
08/09/25	LAS	S	32:56	5	7	.714	4	6	.667	0	0	.000	0	2	2	3	2	2	0	3	13	14	W	72-59
08/11/25	CON	S	31:32	6	14	.429	3	8	.375	2	3	.667	0	4	4	2	0	0	2	2	21	17	W	74-57
08/13/25	at WAS	S	35:15	7	10	.700	6	8	.750	0	0	.000	1	6	7	4	0	0	1	0	18	20	W	88-83
08/15/25	at CHI	S	28:32	7	12	.583	2	4	.500	4	4	1.000	0	4	4	3	4	0	0	1	27	20	W	90-59
08/17/25	ATL	S	30:46	3	10	.300	2	5	.400	3	3	1.000	1	3	4	2	0	0	0	1	-12	11	L	63-79
08/19/25	PHO																						L	91-98
08/22/25	at PHO																						L	72-81
08/24/25	at DAL																						W	90-81
08/30/25	WAS																						W	99-62
08/31/25	IND																						W	75-63
09/02/25	NYL																						W	66-58
09/04/25	DAL																						W	84-80
09/06/25	MIN																						L	72-78
2025	TTL	17-10	423	64	138	.464	37	83	.446	26	29	.897	5	48	53	32	16	4	20	32	58	191	17-17	
2025	AVG	--	24.9	3.8	8.1	--	2.2	4.9	--	1.5	1.7	--	0.3	2.8	3.1	1.9	0.9	0.2	1.2	1.9	3.4	11.2	--	--

No

## SPOTTER'S CHART



#3 Laeticia Amihere  
6-3 | Forward | 3rd Season



#25 Monique Billings  
6-4 | Forward | 8th Season



#22 Veronica Burton  
5-9 | Guard | 4th Season



#6 Kaila Charles  
6-1 | Guard | 5th Season



#2 Kaitlyn Chen  
5-9 | Guard | 1st Season



#14 Temi Fágbenlé  
6-4 | Center | 5th Season



#15 Tiffany 'Tip' Hayes  
5-10 | Guard | 13th Season



#0 Carla Leite  
5-9 | Guard | 1st Season



#20 Kate Martin  
6-0 | Guard | 2nd Season



#12 Iliana Rupert  
6-4 | Center | 4th Season



#13 Janelle Salaün  
6-2 | Forward | 1st Season



#5 Kayla Thornton  
6-1 | Forward | 10th Season



#24 Cecilia Zandalasini  
6-2 | Forward | 4th Season



Natalie Nakase  
Head Coach | 1st Season



Kasib Powell  
Assistant Coach | 1st Season



Sugar Rodgers  
Assistant Coach | 1st Season



Landon Tatum  
Assistant Coach | 1st Season

### PRONUNCIATION GUIDE

Laeticia Amihere: Luh-tee-see-uh ah-ME-hear

Kaila Charles: KY-luh

Temi Fabgenle: TEM-ee Fahg-ben-leh

Carla Leite: Late

Natalie Nakase: nuh-KAH-say

Kasib Powell: Kuh-sib

Iliana Rupert: ill-e-AH-nuh roo-PAIR

Janelle Salaün: Juh-nell Sa-LON

Cecilia Zandalasini: Che-CHEE-lee-uh ZAN-dah-leh-see-nee