

ATLANTA DREAM BASKETBALL

2021 GAME NOTES

#DoltForTheDream

2021 REGULAR SEASON SCHEDULE

| Date | Opponent | Time (ET)/Result | TV |
|-------------------|-----------------|------------------|--------------|
| May 14 | Connecticut* | L, 67-78 | Twitter |
| May 19 | Chicago* | L, 77-85 | Facebook |
| May 21 | at Indiana* | W, 83-79 | Twitter |
| May 25 | at Chicago* | W, 90-83 | CBSSN |
| May 27 | Dallas | W, 101-95 | BSSO |
| May 29 | at New York* | W, 90-87 (OT) | Prime Video |
| June 4 | at Minnesota | L, 84-86 | Facebook |
| June 6 | at Minnesota | L, 80-100 | BSSE |
| June 9 | Seattle | L, 71-95 | BSSE |
| June 11 | Seattle | L, 75-86 | CBSSN |
| June 13 | Washington* | W, 101-78 | BSSO/NBA TV |
| June 17 | at Washington* | L, 93-96 | League Pass |
| June 23 | Minnesota | L, 85-87 | BSSE Alt |
| June 26 | New York* | L, 78-101 | BSSO |
| June 29 | New York | W, 73-69 | BSSE/ESPN3 |
| July 2 | at Seattle | L, 88-91 | Twitter |
| July 4 | at Las Vegas | L, 95-118 | NBA TV |
| July 9 | at Connecticut* | L, 84-72 | CBSSN |
| July 11 | Indiana* | L, 79-68 | BSSO/FB |
| - Olympic Break - | | | |
| Aug. 15 | at Phoenix | L, 81-92 | CBSSN |
| Aug. 17 | at Los Angeles | L, 80-85 (OT) | NBA TV |
| Aug. 19 | at Los Angeles | L, 64-66 | NBA TV |
| Aug. 21 | Phoenix | L, 69-84 | ESPN2 |
| Aug. 24 | Chicago | L, 79-86 | BSSE/ESPN3 |
| Aug. 26 | Las Vegas | L, 71-78 | BSSE/NBA TV |
| Sept. 2 | at Dallas | L, 68-72 | Facebook/BSS |
| Sept. 5 | at Dallas | W, 69-64 | CBSSN |
| Sept. 8 | Phoenix | W, 76-75 | NBA TV |
| Sept. 10 | at Washington | L, 74-82 | NBA TV |
| ★ Sept. 14 | Indiana | 7:00 p.m. | BSSE/NBA TV |
| Sept. 16 | Los Angeles | 7:00 p.m. | Prime Video |
| Sept. 19 | at Connecticut | 1:00 p.m. | NBA TV |

* Commissioner's Cup game
BSSO = Bally Sports South
BSSE = Bally Sports Southeast
CBSSN = CBS Sports Network

WNBA Standings (as of 9/12)

| | | |
|-----|---------------------|-------|
| #1 | Connecticut Sun - x | 24-6 |
| #2 | Las Vegas Aces - x | 21-8 |
| #3 | Minnesota Lynx - x | 20-10 |
| #4 | Seattle Storm - x | 20-11 |
| #5 | Phoenix Mercury - x | 19-11 |
| #6 | Chicago Sky | 15-15 |
| #7 | Dallas Wings | 13-17 |
| #8 | Washington Mystics | 12-18 |
| #9 | Los Angeles Sparks | 11-19 |
| #10 | New York Liberty | 11-19 |
| #11 | Atlanta Dream - o | 7-22 |
| #12 | Indiana Fever - o | 6-23 |



ATLANTA DREAM vs INDIANA FEVER

Atlanta, Ga. • Gateway Center Arena @ College Park
Tuesday, September 14 at 7:00 p.m. ET
Game 30 • NBA TV/Bally Sports Southeast

PxP: Angel Gray • Color: Tabitha Turner • Sideline: Autumn Johnson



PROBABLE STARTERS

G #0 ODYSSEY SIMS 5-8 | 163 | Baylor

2021: WNBA record 13 assists off the bench on 7/4 at Las Vegas ... Season-best all-around performance came against Washington (6/13), where she scored 20 points with 5 total rebounds, 4 steals and 4 assists ... Season-high 26 points at Los Angeles (8/17), 16 of which were scored in the first half (best this season) ... Has led team in assists 7 times this season.

G #10 COURTNEY WILLIAMS 5-8 | 133 | South Florida

2021: 2021 All-Star ... Season: 2 30-point games, 8 20-point games, 5 double-doubles | Career: 4 30-point games, 25 20-point games, 14 double-doubles ... Recorded her 10th career double-double and 5th with the Dream with 31 points and 12 rebounds at New York (5/29), and 19th career game with 20+ points ... AP Player of the Week (6/2) ... 30 points at Phoenix (8/15).

G #15 TIFFANY HAYES 5-10 | 155 | UConn

2021: 51 career 20-point games ... Returned for her first WNBA game since 2019, picking up 3 steals, 2 assists and 5 points against Chicago (5/19). ... Third straight 20-point outing (49th career) with 22 points against Seattle (6/9) ... Recorded a career-high 5 steals at Washington (6/17), the first Dream player since Renee Montgomery in 2018 to record at least 5 in a game.

F #25 MONIQUE BILLINGS 6-4 | 192 | UCLA

2021: First double-double of the season and 6th of her career with 10 points and 11 rebounds against Dallas (5/27) ... Became the fourth different Dream player to record 4+ steals in a single quarter and the second this season ... Season-high 21 points against Las Vegas (8/26), her second career 20-point game ... Back-to-back double-doubles at Dallas: 15 pts/11 reb (9/2), 12 pts/14 reb (9/5).

C #1 ELIZABETH WILLIAMS 6-3 | 192 | Duke

2020 WNBA First Team All-Defense | 2021: Started in the Dream's opener against CON (5/14), scoring 6 points with 4 rebounds, 2 steals and a block ... Has recorded at least 1 block in all six of the Dream's games so far, two games with 2 blocks ... Season-high 2 blocks and 3 steals at CHI (5/25) ... 13th career double-double with 12 points and 11 rebounds at New York (5/29).

2021 RECORDS

| 2021 | Record | Home | Road | OT |
|---------|--------|------|------|-----|
| Overall | 7-22 | 3-11 | 4-11 | 1-1 |
| Eastern | 4-8 | 2-5 | 3-3 | 1-0 |
| Western | 2-14 | 1-6 | 1-8 | 0-1 |

INJURIES AND INACTIVES

| | |
|--|---|
| Candice Dupree - Probable (Back) - <i>day-to-day</i> | Crystal Bradford - OUT (Right Foot) - NWT |
| Tianna Hawkins - Doubtful (Right Foot) | Chennedy Carter - OUT (Suspended) - NWT |
| | Cheyenne Parker - OUT (Pregnancy) |

RECENT TRANSACTIONS

July 6: Atlanta suspended Chennedy Carter (partial season).
July 24: Atlanta named Darius Taylor interim head coach.
July 26: Atlanta signed Candice Dupree to contract.
August 24: Atlanta signed Blake Dietrick to rest-of-season contract.

2021 ATLANTA DREAM ROSTER

| # | Player | Pos | Ht | Wt | DOB | Exp | From | Twitter |
|----|--------------------|-----|------|-----|--------------------|-----|-------------------|------------------|
| 0 | Odyssey Sims | G | 5-8 | 150 | July 13, 1992 | 7 | Baylor/USA | @Lucky_Lefty0 |
| 1 | Elizabeth Williams | C-F | 6-3 | 200 | June 23, 1993 | 6 | Duke/USA | @E_Williams_1 |
| 3 | Chennedy Carter | G | 5-9 | 145 | November 14, 1998 | 1 | Texas A&M/USA | @ChennedyCarter |
| 4 | Aari McDonald | G | 5-6 | 141 | August 20, 1998 | R | Arizona/USA | @AariMcdonald |
| 9 | Crystal Bradford | G | 6-0 | 170 | November 1, 1993 | 1 | Central Mich./USA | @get_em_cb |
| 10 | Courtney Williams | G | 5-8 | 133 | May 11, 1994 | 5 | South Florida/USA | @CourtMWilliams |
| 11 | Blake Dietrick | G | 5-10 | 169 | July 19, 1993 | 4 | Princeton/USA | N/A |
| 15 | Tiffany Hayes | G | 5-10 | 155 | September 20, 1989 | 8 | Connecticut/USA | @tiphayes3 |
| 21 | Tianna Hawkins | F | 6-3 | 181 | March 2, 1991 | 7 | Maryland/USA | @t_hawk21 |
| 24 | Candice Dupree | F | 6-2 | 173 | August 16, 1984 | 15 | Temple/USA | N/A |
| 25 | Monique Billings | F | 6-4 | 185 | May 2, 1996 | 3 | UCLA/USA | @moniquebillings |
| 32 | Cheyenne Parker | F | 6-4 | 198 | August 22, 1992 | 6 | Middle Tenn./USA | N/A |
| 40 | Shekinna Stricklen | F | 6-2 | 229 | July 30, 1990 | 9 | Tennessee/USA | @strick40 |

| # | Player | Pos | Ht | Wt | DOB | Exp | From | Twitter |
|----|--------------------|-----|------|-----|--------------------|-----|-------------------|------------------|
| 25 | Monique Billings | F | 6-4 | 185 | May 2, 1996 | 3 | UCLA/USA | @moniquebillings |
| 9 | Crystal Bradford | G | 6-0 | 170 | November 1, 1993 | 1 | Central Mich./USA | @get_em_cb |
| 3 | Chennedy Carter | G | 5-9 | 145 | November 14, 1998 | 1 | Texas A&M/USA | @ChennedyCarter |
| 11 | Blake Dietrick | G | 5-10 | 169 | July 19, 1993 | 4 | Princeton/USA | N/A |
| 24 | Candice Dupree | F | 6-2 | 173 | August 16, 1984 | 15 | Temple/USA | N/A |
| 21 | Tianna Hawkins | F | 6-3 | 181 | March 2, 1991 | 7 | Maryland/USA | @t_hawk21 |
| 15 | Tiffany Hayes | G | 5-10 | 155 | September 20, 1989 | 8 | Connecticut/USA | @tiphayes3 |
| 4 | Aari McDonald | G | 5-6 | 141 | August 20, 1998 | R | Arizona/USA | @AariMcdonald |
| 32 | Cheyenne Parker | F | 6-4 | 198 | August 22, 1992 | 6 | Middle Tenn./USA | N/A |
| 0 | Odyssey Sims | G | 5-8 | 150 | July 13, 1992 | 7 | Baylor/USA | @Lucky_Lefty0 |
| 40 | Shekinna Stricklen | F | 6-2 | 229 | July 30, 1990 | 9 | Tennessee/USA | @strick40 |
| 10 | Courtney Williams | G | 5-8 | 133 | May 11, 1994 | 5 | South Florida/USA | @CourtMWilliams |
| 1 | Elizabeth Williams | C-F | 6-3 | 200 | June 23, 1993 | 6 | Duke/USA | @E_Williams_1 |

Interim Head Coach – Darius Taylor (fourth season, Michigan)

Assistant Coach - La’Keshia Frett (first season, Georgia)

Assistant Coach - Daynia La-Force (first season, Georgetown)

Athletic Trainer - Natalie Trotter (second season, Valdosta State/Troy)

Strength and Conditioning Coach - Drew Williams (first season, UCF/Georgia State)

Video Coordinator & Scouting Director - Sydney Durrah (second season, Maryland)

Director of Operations - Brooklyn Cartwright (first season, Georgia Southern)

PRONUNCIATION GUIDE

Chennedy Carter – KEN-eh-dee

Blake Dietrick – dee-TRICK

Tianna Hawkins - tee-AWN-uh

Daynia La-Force - DAY-ñia

Aari McDonald - AIR-ee

Shekinna Stricklen – sheh-KEE-nuh

How The Team Was Built

| | |
|--------------------|---|
| Through the Draft: | Tiffany Hayes, 14 th overall pick, 2012 Monique Billings, 15 th overall pick, 2018 Chennedy Carter, 4 th overall pick, 2020 Aari McDonald, 3 rd overall pick, 2021 |
| Via Trade: | Elizabeth Williams from Connecticut, 2015 Courtney Williams from Connecticut, 2020 |
| Via Free Agency: | Shekinna Stricklen, 2/16/2020 Cheyenne Parker, 2/1/21 Tianna Hawkins, 2/4/21 Odyssey Sims, 3/1/21 Crystal Bradford, 4/17/21 Candice Dupree, 6/26/21 Blake Dietrick, 8/24/21 |

QUICK FACTS

GENERAL

Full Name: Atlanta Dream
 Location: Atlanta, Ga.
 Inaugural Season: 2008
 Colors: Red, Gray, Blue
 Owners: Larry Gottesdiener, Suzanne Abair, Renee Montgomery
 Dream Pursued, LLC
 TV: ESPN2/CBS Sports Network/Bally Sports/Twitter

COACHING STAFF

Interim Head Coach: Darius Taylor
 Years with Dream: Fourth season (1st as HC)
 Career Record as HC: 1-9
 Record with Dream as HC: 1-9
 Alma Mater: Michigan
 Assistant Coach: LaKeshia Frett (Georgia)
 Assistant Coach: Daynia La-Force (Georgetown)
 Head Athletic Trainer: Natalie Trotter (Valdosta State)
 Director of Basketball Ops: Brooklyn Cartwright (Georgia Southern)
 Dir of Scouting & Video Production: Sydney Durrah (Maryland)

TEAM INFORMATION

2020 Record: 7-15
 2020 Home Record: 3-8
 2020 Road Record: 4-7
 2020 vs Eastern Conference: 6-6

DREAM HISTORY

First Year: 2008 (14th Season)
 Regular Season Record: 205-254
 Regular Season Home Record: 124-105
 Regular Season Road Record: 81-149
 Playoff Record: 15-19 (9 Appearances)
 Best Finish: WNBA Finals (2010, 2011, 2013)
 WNBA Championships: 0
 Eastern Conference Championships: 3 (2010, 2011, 2013)



WHY WE BOUGHT THE DREAM

LARRY GOTTESDIENER, SUZANNE AB AIR AND
 RENEE MONTGOMERY, FOR THE AJC

In 2020, The Atlanta Dream altered the course of history while navigating a pandemic and professional sports in a bubble, presenting an awe-inspiring profile in courage to the nation and the world. We invested in The Dream to support, protect, and honor the fearless legacy of these elite athletes.

The Dream franchise will be stewarded by two highly accomplished women, Dream President Suzanne Abair and Vice President Renee Montgomery.

...

On January 5th, we watched as The Dream's activism was pivotal in changing the balance of power in our government. We embraced the euphoria that ensued, until the next day when insurrectionists stormed our Capitol and attempted to subvert our democracy. We felt compelled to take a stand to amplify the message of the Atlanta Dream and promote change and social justice. We called WNBA Commissioner Cathy Engelbert to inquire whether the WNBA had a deep-pocketed and like-minded owner-investor ready to close before the start of the historic 25th season.

We articulated our vision of a long-term commitment to the team, the city of Atlanta, and the league. As Cathy shared her own infectious excitement for the future of the league, she encouraged us to pursue our interest in The Dream with a clear message that the upfront investment would be significant, a long-term horizon critical, and a progressive culture, essential. In a bit of a whirlwind, we closed two months later.

So, what is our mission? Our mission is to create the flagship franchise in the WNBA, to respect our players as athletes and people, to give back to the community, and to build an organization that honors the legacy of our name – The Atlanta Dream – by rising to meet the fierce urgency of now.

What about "The Game?" Women's hoops is an extraordinary blend of speed, skill, and grit. The 2021 Dream is loaded with incredible talent. Equally impressive, though, is the professionalism with which the players have embraced us and their passion to create a championship culture.

To our current and future players, to the legions of worldwide Dream fans, to the city of Atlanta we say: We are here to elevate, win, inspire, and captivate. Together. We are excited about this journey, and we are in it for the long run.

Read the rest of this piece in the Atlanta Journal Constitution.

DREAM PUBLIC RELATIONS AND SOCIAL MEDIA

Public Relations Manager Kelsey Bibik
 Phone: 404-920-2545(O) / 858-361-9855 (C)
 Email: Kelsey.Bibik@AtlantaDream.net
 Twitter: @kelseybibik
 Director of Digital Media & Marketing: Dan Goldberger
 Phone: 404-920-2544 (O) / 646-872-7568 (C)
 Email: Dan.Goldberger@AtlantaDream.net
 Twitter: @DanGoldberger
 Twitter @AtlantaDream
 Instagram atlantadream
 Facebook /AtlantaDream
 PR Twitter @ATLDreamPR

NOTES AND STORYLINES

Atlanta Dream names NFL Executive and Sports Industry Veteran Morgan Shaw Parker as President and Chief Operating Officer

The Atlanta Dream announced today that NFL Executive Morgan Shaw Parker will join the team as President and Chief Operating Officer. Shaw Parker brings over 25 years of experience and values-driven leadership at all levels of the sports industry.

Most recently she served as Vice President and Chief Marketing Officer at Arthur M. Blank Sports & Entertainment (AMBSE) where she led marketing and communications initiatives for the Atlanta Falcons and Mercedes-Benz Stadium.

Prior to AMBSE, Shaw Parker spent over a decade at Nike, Inc., five years with the Kansas City Chiefs and several years with two industry-leading sports marketing agencies.

"It is an incredible honor to join the WNBA and the Atlanta Dream, an organization whose new leadership celebrates its players and embraces their powerful roles both on the court and in the Atlanta community," said Shaw Parker.

Dream Sign Blake Dietrick to Rest of Season

The Atlanta Dream signed guard Blake Dietrick to a rest-of-season contract on Tuesday, August 24.

The 5-10 guard out of Princeton will play her third season with the Dream in 2021, returning after her career performance in the 2020 WNBA Bubble in Bradenton, Fla. Last year, Dietrick averaged 5.9 points, 3.4 assists and 1.6 rebounds per game, shooting 44.8 percent from beyond the arc – setting the Atlanta Dream single-season record.

Most recently, Dietrick represented the United States earlier this week at the FIBA 3x3 Women's Series in Constanta, Romania, helping her team to a fourth-place finish in the tournament.

Candice Dupree Comes Back Down South

The Atlanta Dream most recently signed seven-time WNBA All-Star Candice Dupree to a contract on July 26. The Tampa, Fla. native is in her 16th year in the league and ranks as one of the top players in WNBA history in the all-time records books.

WNBA All-Time Leaders**Total Points**

1. Diana Taurasi* - 9,174
2. Tina Thompson - 7,488
3. Tamika Catchings - 7,380
4. **Candice Dupree* - 6,870**
5. Cappie Pondexter - 6,811

Total Rebounds

1. Sylvia Fowles* - 3,689
2. Rebekkah Brunson - 3,356
3. Tina Charles* - 3,356
4. Tamika Catchings - 3,316
5. Lisa Leslie - 3,307
6. **Candice Dupree* - 3,138**

Two-Point Field Goals Made

1. **Candice Dupree* - 2,801**
2. Tina Charles* - 2,518
3. Sylvia Fowles* - 2,335
4. Lisa Leslie - 2,210
5. Seimone Augustus - 2,162

***Active player**

Dupree has 69 career double-doubles, which stands as the 12th-most double-doubles in WNBA history and 5th-best among active players. She has recorded a double-double in 14.3% of all games she has played (484).

Against Los Angeles (8/17), she recorded her 900th assist in the WNBA, joining Tamika Catchings as just the second player in league history with 6,000+ PTS, 3,000+ REB and 900+ AST (via Across the Timeline).

Aari McDonald Sets Dream Free Throw Record

Aari McDonald most recently set the Atlanta Dream franchise record with 31 consecutive made free throws. Her 31-straight stood as the longest streak among active players in the league until she missed her second free throw against Phoenix on 8/15.

| | | |
|----|-------------------|--------------------------|
| 31 | Aari McDonald | 05/25/2021 to 08/15/2021 |
| 30 | Tiffany Hayes | 06/22/2016 07/10/2016 |
| 30 | Damiris Dantas | 08/09/2015 05/13/2017 |
| 26 | Layshia Clarendon | 07/02/2017 07/19/2017 |

McDonald has been reliable at the charity stripe for the Dream all season, shooting 91.5% from the line so far this season. She is one of only six players this season to shoot above 90% with at least 45 attempts, and the only rookie to do it this year. The other five are Kayla McBride (MIN), Aerial Powers (WAS), Sabrina Ionescu (NYL), Allie Quigley (CHI) and Kelsey Plum (LVA).

Darius Taylor Named Interim Assistant Coach

Prior to the team retuning to Atlanta from the Olympic hiatus, Mike Petersen stepped down from his role as the Dream's Interim Head Coach. "For health reasons that the grind of the WNBA season will not allow me to adequately address, I have decided to step down from my coaching duties with the Dream," Petersen said. "I want to thank the Atlanta Dream players, staff and ownership for the opportunity to be part of an amazing organization."

Darius Taylor was elevated to the head coaching role and will lead the team as a head coach for the first time in his career as the Dream faces Phoenix on August 15.

Taylor's career began at Temple University in the early 2000's as an assistant coach under Dawn Staley (where he coached Candice Dupree). Prior to joining former head coach Nicki Collen's staff in Atlanta along with Mike Petersen, Taylor had left the coaching world, following his now-wife Joni Taylor to Athens as she took over the Georgia Bulldogs women's basketball program.

NOTES AND STORYLINES

Ball Thieves

Atlanta is averaging 9.3 steals per game, the most in the league. It's the 14th-highest average all-time by any team and the highest in the WNBA since 2012, when the Dream averaged 9.8 steals per game. (Indiana: 6.1, 10th).

Only two teams this season have picked up more steals in a game than the Dream when playing Atlanta this season - Minnesota on June 6 (12-7) and Dallas on both May 27 (8-5) and September 2 (10-5).

Four Dream players are ranked in the top 20 in the league in steals per game, three are ranked in the top 15 for total steals (official leaders):

Tiffany Hayes - 1.7 SPG (4th)
Odyssey Sims - 1.3 SPG (13th), 37 STL (t-10th)
Monique Billings - 1.2 SPG (20th), 33 STL (t-17th)
Elizabeth Williams - 33 STL (t-17th)

Tiffany Hayes recorded five steals at Washington (6/17) and Cheyenne Parker recorded five against Minnesota (6/23).

- Hayes was the first Dream player to record five in a game since Renee Montgomery did it in 2018.
 - The last time two different Dream players had five-steal games was in 2016 (Bria Holmes, Sancho Lyttle) (via Elias).
- The franchise record is four players with 5+ steals in a season.

The Dream is averaging 12.0 turnovers per game this season, the second-fewest in the league this year and on track for the fewest in franchise record (current all-time low: 12.2 in 2017) (Washington: 12.8, 4th). Atlanta also owns the second-lowest turnover percentage rate this year at 14.8%, behind only Las Vegas's 14.1% (Washington: 15.9, 4th).

Protecting the Glass

The Dream rank second in the league with 9.8 offensive rebounds per game, behind only Dallas' 10.1 per game (Indiana: 9.4, 3rd).

Monique Billings ranks fourth in the league with 2.7 offensive rebounds per game (a career best for her) and 8th with a 9.8% offensive rebound percentage.

Courtney Williams leads all guards with 1.5 offensive rebounds per game and 43 total o-boards so far this season. She also leads all true guards with 6.6 total rebounds per game (behind only Connecticut's DeWanna Bonner, who is listed as a forward-guard).

Backcourt Trio

The backcourt trio of Courtney Williams, Tiffany Hayes and Chennedy Carter averaged a combined 51.8 points per game in the five games they played together.

Injuries and Rotating Lineups

The Dream have yet to have a fully healthy roster this season, with Crystal Bradford, Tianna Hawkins, Candice Dupree, Cheyenne Parker, Chennedy Carter, Shekinna Stricklen, Tiffany Hayes and Odyssey Sims all landing on the inactives list at some point this season. Atlanta has not played one game with an empty injury report yet this season.

Upcoming Milestones

Through 29 games (as of 9/10):

Tianna Hawkins needs

- 3 defensive rebounds to reach 500 career (current: 497)

Tiffany Hayes needs

- 5 steals to reach 300 career (current: 295)

Achieved Milestones

Most recently, Tiffany Hayes reached 300 career made three-pointers at Washington (9/10).

Courtney Williams reached 100 career three-pointers made against Phoenix (9/8).

Odyssey Sims reached 1,000 career made field goals against Chicago (8/24), a game which also marked Elizabeth Williams' 200th career game.

Elizabeth Williams reached 500 career rebounds with 1 against Los Angeles (8/19).

Tianna Hawkins reached 100 career steals with 1 against Los Angeles (8/17).

Courtney Williams reached 2,000 career points against Indiana (7/11).

Shekinna Stricklen played her 300th career game against Indiana (7/11) and Monique Billings played in her 100th career game at Connecticut (7/9).

Elizabeth Williams reached 300 career blocks in a Dream uniform with a season-best 3 against Minnesota (6/23).

In the same game, Cheyenne Parker reached 100 career steals with her first steal against Minnesota (6/23). She went on to record 5 in that game, a Dream record for the season.

Tianna Hawkins reached 500 career made field goals with four against Washington (6/13), bringing her to 502 after the game. Monique Billings reached 500 career rebounds with a team-leading 7 against Chicago (5/25), bringing her to 503 after the game. Billings also reached 500 career points with 2 against Minnesota (6/6).

Elizabeth Williams, All-Time Blocks Leader

Dream veteran Elizabeth Williams took over as the Dream's all-time blocks leader, currently sitting at 324 total blocks with the Dream through 29 games this season.

Atlanta's All-Time Leaders, Blocks

1. Elizabeth Williams (2016-21) - 324
2. Erika de Souza (2008-15) - 295
3. Angel McCoughtry (2009-16, 2018-19) - 185
4. Sancho Lyttle (2009-17) - 156
5. Alison Bales (2008, 2010-11) - 121

She also holds three of the top 5 records for most blocks in a season

NOTES AND STORYLINES

in Dream history:

Most blocked shots, season

79 - Elizabeth Williams, 2016

67 - Elizabeth Williams, 2017

65 - Jessica Breland, 2018

61 - Erika de Souza, 2013

59 - Elizabeth Williams, 2018

Williams set the single game record for the 2020 WNBA season with 6 blocks against New York (9/3).

Crystal Bradford

Guard Crystal Bradford came back to the league this season for the first time since her rookie season in 2015 with Los Angeles, making her way into the Dream's starting lineup halfway through the season. Bradford previously played for Ramat Hasharon in Israel and Besiktas in Turkey.

Bradford suffered a Jones fracture in her right foot during the Dream's game against Chicago on August 24 and underwent surgery on August 30 to repair the fracture. She will remain out for the rest of the Dream's 2021 season.

Pro Baller, Mother, and Software Engineer Tianna Hawkins

When Dream forward Tianna Hawkins isn't playing, she is juggling one of her many other responsibilities. Not only is she a mother to her five-year-old son, Emanuel, she is also a part-time software engineer with Microsoft. A graduate of the University of Maryland with a degree in Criminology and Criminal Justice, Hawkins would like to become a federal agent after her professional career. While in college, she even had the opportunity to intern with the Secret Service.

Dream Draft Three in 2021 WNBA Draft

The Dream drafted three players in the 2021 WNBA Draft, picking guard Aari McDonald out of Arizona with the third overall selection, Spanish star Raquel Carrera with the 15th overall pick and Lindsey Pulliam out of Northwestern with the 27th pick.

At Arizona, McDonald led the Wildcats to the team's first NCAA Finals appearance in 2021, averaging 24.8 points in their six games of the NCAA Tournament, including dropping 33 points against Indiana in the Elite Eight. The 5-6 guard earned Pac-12 Player of the Year and Defensive Player of the Year awards her redshirt senior year before becoming the first Wildcat to ever be drafted in the first round of a WNBA Draft. McDonald is still working to finish her masters degree at Arizona, studying Applied Behavior Analysis.

2021 Dream Uniforms

Entering the 2021 season, the WNBA and Nike have joined forces to tell H.E.R. story. The Dream worked with Nike to create three special uniforms that convey a message around the unique characteristics of Atlanta and to tell our story. The three uniforms have been given the names Heroine, Explorer and Rebel to highlight the power, potential and attitude of the WNBA athlete.

Atlanta Dream's Nike Heroine Edition in white and Atlanta Dream's Nike Explorer Edition in red uniforms capture the passion, courage and heart of the Georgians who championed the Civil Rights Movement. The belief in a more equitable tomorrow is amplified, represented by shimmering rays cast over a striking, bold red field — details that symbolize hope.

The colorful Atlanta Dream's Rebel Edition pays homage to the sound of Atlanta, defined by the city's unmatched impact on Hip-Hop and R&B. The legacy of the scene's legendary female recording artists is celebrated with vibrant colors, strapping side-stripping, and confident lettering—a salute to the swagger, creativity and iconicity of ATL's most influential female musicians. The large ATL wordmark represents the city, while the side-panel design lines invoke vinyl records of the past and the ever-evolving sound of today's female artists. The subtle hints of silver in the uniform — such as the silver star and logo detailing — are symbolic of the platinum and gold records produced by the women of the city.

New Ownership Group

WNBA and NBA Boards of Governors unanimously approved the sale of the Atlanta Dream to Larry Gottesdiener, Chairman of Northland, an industry-leading national real estate firm on February 26, 2021. The three-member investor group is comprised of former Dream star Renee Montgomery, Northland President and Chief Operating Officer Suzanne Abair, and Gottesdiener.

The sale made two-time WNBA champion Renee Montgomery the first former player to become both an owner and executive of a WNBA team. Montgomery sat out the 2020 season to focus on social justice issues and recently announced her retirement from the league after 11 seasons.

DREAM-FEVER SERIES HISTORY

| SERIES RECORD | | | |
|--------------------------|------------------|-----|-------------|
| Overall..... | ATL leads, 26-24 | | |
| at Atlanta..... | ATL leads, 16-7 | | |
| at Indiana..... | IND leads, 17-10 | | |
| Current Streak..... | ATL, W2 | | |
| at Atlanta..... | ATL, W8 | | |
| at Indiana..... | ATL, W1 | | |
| Largest Atlanta Win..... | 21 (7/7/17) | | |
| Largest Indiana Win..... | 32 (6/16/18) | | |
| DATE | H/A | W/L | SCORE |
| 5/13/08 | H | L | 67-100 |
| 7/16/08 | A | W | 101-109(OT) |
| 8/30/08 | A | L | 72-98 |
| 9/8/08 | H | L | 67-72 |
| 6/6/09 | H | W | 68-82 |
| 7/5/09 | A | L | 72-67 |
| 7/17/09 | A | L | 88-64 |
| 5/16/10 | H | W | 97-82 |
| 6/19/10 | A | L | 80-96 |
| 7/16/10 | A | L | 94-62 |
| 8/1/10 | H | W | 92-99 |
| 8/6/10 | A | L | 96-88(OT) |
| 7/19/11 | H | W | 87-96 |
| 8/27/11 | A | W | 85-74 |
| 8/30/11 | H | W | 73-92 |
| 9/11/11 | A | W | 73-75 |
| 5/19/12 | A | L | 87-80 |
| 5/27/12 | H | L | 72-92 |
| 6/26/12 | H | W | 78-77 |
| 8/18/12 | A | L | 74-65 |
| 9/5/12 | H | W | 86-88 |
| 5/31/13 | A | W | 88-57 |
| 6/25/13 | H | W | 77-78 |
| 8/10/13 | A | L | 76-85 |
| 9/4/13 | H | W | 83-71 |
| 5/17/14 | A | W | 89-80 |
| 5/25/14 | H | L | 55-84 |
| 6/29/14 | A | W | 70-75 |
| 7/1/14 | H | L | 64-82 |
| 7/12/14 | A | W | 90-77 |
| 6/16/15 | H | L | 71-57 |
| 8/7/15 | A | L | 78-67 |
| 8/28/15 | A | W | 83-77 |
| 9/11/15 | H | L | 93-87 |
| 5/20/16 | A | L | 67-73 |
| 5/29/16 | H | W | 87-73 |
| 7/15/16 | A | L | 72-78 |
| 6/15/17 | A | L | 74-85 |
| 7/7/17 | H | W | 89-68 |
| 8/26/17 | H | W | 79-74 |
| 6/14/18 | H | W | 72-68 |
| 6/16/18 | A | L | 64-96 |
| 7/1/18 | A | W | 87-83 |
| 7/13/18 | H | W | 98-74 |
| 6/19/19 | H | W | 88-78 |
| 7/31/19 | A | L | 59-61 |
| 8/10/19 | A | L | 82-87 |
| 8/2/20 | A | L | 77-93 |
| 9/1/20 | H | W | 102-90 |
| 5/21/21 | A | W | 83-79 |
| 7/11/21 | H | L | 68-79 |

| WOMEN'S NATIONAL BASKETBALL ASSOCIATION | | | | | | | | | | OFFICIAL SCORER'S REPORT FINAL BOX | | | | | | | | | | |
|--|-----|-------|--------|-------|----|-------|----|-------|----|---|-----|----|----|----|----|----|-----|-----|----|--|
| Sunday, July 11, 2021 Gateway Center Arena @ College Park, Atlanta, GA | | | | | | | | | | Game Duration: 1:58 Attendance: 1897 | | | | | | | | | | |
| Officials: #5 Tiara Cruse, #18 Kurt Walker, #12 Karleena Tobin | | | | | | | | | | | | | | | | | | | | |
| VISITOR: Indiana Fever (4-16) | | | | | | | | | | | | | | | | | | | | |
| | POS | MIN | FG | FGA | 3P | 3PA | FT | FTA | OR | DR | TOT | A | PF | ST | TO | BS | +/- | PTS | | |
| 25 Tiffany Mitchell | F | 27:22 | 2 | 5 | 0 | 1 | 10 | 11 | 0 | 8 | 8 | 2 | 2 | 0 | 4 | 0 | 2 | 14 | | |
| 51 Jessica Breland | F | 23:32 | 5 | 14 | 0 | 2 | 0 | 0 | 4 | 3 | 7 | 2 | 2 | 0 | 3 | 1 | -8 | 10 | | |
| 15 Teaira McCowan | C | 26:43 | 6 | 11 | 0 | 0 | 9 | 13 | 7 | 7 | 14 | 0 | 4 | 0 | 3 | 3 | 10 | 21 | | |
| 0 Kelsey Mitchell | G | 30:40 | 4 | 13 | 3 | 8 | 0 | 0 | 1 | 4 | 5 | 1 | 4 | 0 | 4 | 0 | 8 | 11 | | |
| 3 Danielle Robinson | G | 33:08 | 6 | 9 | 0 | 0 | 0 | 0 | 0 | 3 | 3 | 9 | 2 | 1 | 2 | 0 | 6 | 12 | | |
| 35 Victoria Vivians | | 29:29 | 2 | 6 | 1 | 4 | 1 | 2 | 0 | 7 | 7 | 1 | 2 | 0 | 1 | 0 | 19 | 6 | | |
| 10 Chelsey Perry | | 11:24 | 2 | 3 | 1 | 2 | 0 | 0 | 0 | 4 | 4 | 0 | 1 | 1 | 0 | 0 | 7 | 5 | | |
| 1 Aaliyah Wilson | | 08:13 | 0 | 4 | 0 | 0 | 0 | 0 | 0 | 1 | 1 | 0 | 0 | 0 | 1 | 0 | 5 | 0 | | |
| 12 Lindsay Allen | | 07:08 | 0 | 0 | 0 | 0 | 0 | 0 | 0 | 0 | 0 | 0 | 3 | 0 | 0 | 0 | 7 | 0 | | |
| 4 Kysre Gondrezick | | 02:21 | 0 | 0 | 0 | 0 | 0 | 0 | 0 | 0 | 0 | 0 | 1 | 0 | 1 | 0 | -1 | 0 | | |
| | | | 200:00 | 27 | 65 | 5 | 17 | 20 | 26 | 12 | 37 | 49 | 18 | 18 | 2 | 19 | 4 | 11 | 79 | |
| | | | | 41.5% | | 29.4% | | 76.9% | | | | | | | | | | | | |
| | | | | | | | | | | | | | | | | | | | | |
| | | | | | | | | | | | | | | | | | | | | |
| | | | | | | | | | | | | | | | | | | | | |
| | | | | | | | | | | | | | | | | | | | | |
| | | | | | | | | | | | | | | | | | | | | |
| | | | | | | | | | | | | | | | | | | | | |
| | | | | | | | | | | | | | | | | | | | | |
| | | | | | | | | | | | | | | | | | | | | |
| | | | | | | | | | | | | | | | | | | | | |
| | | | | | | | | | | | | | | | | | | | | |
| | | | | | | | | | | | | | | | | | | | | |
| | | | | | | | | | | | | | | | | | | | | |
| | | | | | | | | | | | | | | | | | | | | |
| | | | | | | | | | | | | | | | | | | | | |
| | | | | | | | | | | | | | | | | | | | | |
| | | | | | | | | | | | | | | | | | | | | |
| | | | | | | | | | | | | | | | | | | | | |
| | | | | | | | | | | | | | | | | | | | | |
| | | | | | | | | | | | | | | | | | | | | |
| | | | | | | | | | | | | | | | | | | | | |
| | | | | | | | | | | | | | | | | | | | | |
| | | | | | | | | | | | | | | | | | | | | |
| | | | | | | | | | | | | | | | | | | | | |
| | | | | | | | | | | | | | | | | | | | | |
| | | | | | | | | | | | | | | | | | | | | |
| | | | | | | | | | | | | | | | | | | | | |
| | | | | | | | | | | | | | | | | | | | | |
| | | | | | | | | | | | | | | | | | | | | |
| | | | | | | | | | | | | | | | | | | | | |
| | | | | | | | | | | | | | | | | | | | | |
| | | | | | | | | | | | | | | | | | | | | |
| | | | | | | | | | | | | | | | | | | | | |
| | | | | | | | | | | | | | | | | | | | | |
| | | | | | | | | | | | | | | | | | | | | |
| | | | | | | | | | | | | | | | | | | | | |
| | | | | | | | | | | | | | | | | | | | | |
| | | | | | | | | | | | | | | | | | | | | |
| | | | | | | | | | | | | | | | | | | | | |
| | | | | | | | | | | | | | | | | | | | | |
| | | | | | | | | | | | | | | | | | | | | |
| | | | | | | | | | | | | | | | | | | | | |
| | | | | | | | | | | | | | | | | | | | | |
| | | | | | | | | | | | | | | | | | | | | |
| | | | | | | | | | | | | | | | | | | | | |
| | | | | | | | | | | | | | | | | | | | | |
| | | | | | | | | | | | | | | | | | | | | |
| | | | | | | | | | | | | | | | | | | | | |
| | | | | | | | | | | | | | | | | | | | | |
| | | | | | | | | | | | | | | | | | | | | |
| | | | | | | | | | | | | | | | | | | | | |
| | | | | | | | | | | | | | | | | | | | | |
| | | | | | | | | | | | | | | | | | | | | |
| | | | | | | | | | | | | | | | | | | | | |
| | | | | | | | | | | | | | | | | | | | | |
| | | | | | | | | | | | | | | | | | | | | |
| | | | | | | | | | | | | | | | | | | | | |
| | | | | | | | | | | | | | | | | | | | | |

RECENT MEETINGS WITH INDIANA

JULY 11, 2021

COLLEGE PARK, Ga. (AP) Teaira McCowan had 21 points and 14 rebounds to help the Indiana Fever beat the Atlanta Dream 79-68 on Sunday.

The Fever (4-16) won their third in a row after 12 straight losses.

Tiffany Mitchell added 14 points, Danielle Robinson scored 12, Kelsey Mitchell 11 and Jessica Breland 10.

Indiana pulled away with 14 straight points for a 77-61 lead on Robinson's basket with 3:53 left. Crystal Bradford stopped the run with 1 of 2 free throws and Aari McDonald's 3-pointer with 2:08 left was the first of the game by the Dream (6-13). Atlanta finished 1 of 13 from 3-point range.

Odyssey Sims had 20 points and Bradford added 14 for Atlanta, which opened the game on a 12-2 run.

MAY 21, 2021

INDIANAPOLIS (AP) Chennedy Carter scored 23 points, Courtney Williams added 16 and Atlanta beat the Indiana Fever 83-79 on Friday night for the Dream's first victory of the season.

Carter made 1 of 2 free throws with 4.5 seconds left for a four-point lead. Indiana, without a timeout, turned it over near mid-court as time expired.

Tiffany Hayes had 14 points for Atlanta (1-2). Williams made four of the Dream's 11 3-pointers.

Kelsey Mitchell scored 19 points for Indiana (0-4). Jessica Breland had 15 points and 16 rebounds, and Bernadett Hatar scored 12 points. Teaira McCowan became the eighth fastest WNBA player to reach 500 career rebounds, doing so in just 60 games.

Hayes and Carter each scored 12 points in the first half and Atlanta led 41-34 at the break. Shekinna Stricklen scored nine points in just five second-half minutes for Atlanta, making 3-pointers on back-to-back possessions late in the third for a 57-55 lead.

SEPTEMBER 1, 2020

BRADENTON, Fla. (AP) Courtney Williams and rookie Chennedy Carter each scored 22 points and the Atlanta Dream beat the Indiana Fever 102-90 on Tuesday night.

Williams also had six rebounds and four assists, and Carter added six assists. Carter has combined for 48 points in her last two games since returning from an injury.

Betnijah Laney chipped in with 16 points for Atlanta (4-13). Glory Johnson had 13 points and eight rebounds, and Elizabeth Williams scored 10 points. The Dream have won two of their last four games following a 10-game losing streak.

Atlanta shot 53.6% from the field, including 10 of 20 from 3-point range, and made 18 of 22 free throws. Johnson made three 3-pointers and Carter was 8 of 10 at the stripe.

Kelsey Mitchell and Teaira McCowan each scored 20 points for Indiana (5-12), which has lost five straight games. McCowan also had seven rebounds and three blocks, and Tiffany Mitchell added 14 points.

ALL-TIME RECORDS

Wins-Losses by Year

| Year | Overall | Home | Away | Conference Place |
|-------|---------|------|------|------------------|
| 2008 | 4-30 | 1-16 | 3-14 | 7 th |
| 2009 | 18-16 | 12-5 | 6-11 | 2 nd |
| 2010 | 19-15 | 10-7 | 9-8 | 4 th |
| 2011 | 20-14 | 11-6 | 9-8 | 3 rd |
| 2012 | 19-15 | 11-6 | 8-9 | 3 rd |
| 2013 | 17-17 | 13-4 | 4-13 | 2 nd |
| 2014 | 19-15 | 13-4 | 6-11 | 1 st |
| 2015 | 15-19 | 9-8 | 6-11 | 5 th |
| 2016 | 17-17 | 11-6 | 6-11 | 4 th |
| 2017 | 12-22 | 9-8 | 3-14 | 5 th |
| 2018 | 23-11 | 13-4 | 10-7 | 1 st |
| 2019 | 8-26 | 5-12 | 3-14 | 6 th |
| 2020* | 7-15 | 3-8 | 4-7 | 4 th |
| 2021 | 7-22 | 3-11 | 4-11 | - |

All-Time Dream Records vs. Opponents

| Team | 2008 | 2009 | 2010 | 2011 | 2012 | 2013 | 2014 | 2015 | 2016 | 2017 | 2018 | 2019 | 2020 | 2021 | Overall |
|-------------|------|-------|-------|-------|-------|-------|-------|-------|-------|-------|-------|------|------|------|---------|
| Chicago | 1-3 | 0-3 | 2-3 | 3-1 | 3-2 | 1-3 | 2-3 | 1-3 | 2-1 | 1-3 | 2-1 | 0-3 | 1-1 | 1-2 | 20-32 |
| Connecticut | 0-3 | 3-1 | 3-1 | 2-2 | 1-3 | 3-2 | 2-2 | 3-2 | 4-0 | 1-2 | 3-0 | 1-3 | 1-1 | 0-2 | 25-25 |
| Dallas | ---- | ---- | ---- | ---- | ---- | ---- | ---- | ---- | 3-0 | 1-2 | 1-2 | 2-1 | 1-1 | 2-1 | 10-7 |
| Detroit | 0-3 | 3-1 | ---- | ---- | ---- | ---- | ---- | ---- | ---- | ---- | ---- | ---- | ---- | ---- | 3-4 |
| Houston | 0-2 | ---- | ---- | ---- | ---- | ---- | ---- | ---- | ---- | ---- | ---- | ---- | ---- | ---- | 0-2 |
| Indiana | 1-3 | 1-2 | 2-3 | 4-0 | 2-3 | 3-1 | 3-2 | 1-3 | 1-2 | 2-1 | 3-1 | 1-2 | 1-1 | 1-1 | 26-25 |
| Las Vegas | ---- | ---- | ---- | ---- | ---- | ---- | ---- | ---- | ---- | ---- | 3-0 | 1-2 | 0-2 | 0-2 | 4-6 |
| Los Angeles | 1-1 | 1-1 | 2-0 | 2-0 | 1-1 | 1-1 | 1-1 | 2-0 | 2-1 | 1-2 | 2-1 | 0-3 | 0-2 | 0-2 | 16-15 |
| Minnesota | 1-1 | 1-1 | 1-1 | 0-2 | 0-2 | 1-1 | 1-1 | 0-2 | 0-3 | 0-3 | 2-1 | 1-2 | 1-1 | 0-3 | 9-24 |
| New York | 0-3 | 1-3 | 2-2 | 2-3 | 2-2 | 2-2 | 1-3 | 1-4 | 1-2 | 1-2 | 2-1 | 1-2 | 2-0 | 2-1 | 20-30 |
| Phoenix | 0-2 | 1-1 | 2-0 | 0-2 | 2-0 | 0-2 | 1-1 | 0-2 | 1-2 | 1-2 | 1-2 | 0-3 | 0-2 | 0-3 | 9-24 |
| Sacramento | 0-2 | 2-0 | ---- | ---- | ---- | ---- | ---- | ---- | ---- | ---- | ---- | ---- | ---- | ---- | 2-2 |
| San Antonio | 0-2 | 2-0 | 2-0 | 0-2 | 1-1 | 1-1 | 2-0 | 1-1 | 1-2 | 2-1 | ---- | ---- | ---- | ---- | 12-8 |
| Seattle | 0-2 | 1-1 | 0-2 | 2-0 | 2-0 | 1-1 | 1-1 | 1-1 | 1-2 | 2-1 | 2-1 | 1-2 | 0-2 | 0-3 | 14-19 |
| Tulsa | ---- | ---- | 2-0 | 2-0 | 1-1 | 1-1 | 2-0 | 1-1 | ---- | ---- | ---- | ---- | ---- | ---- | 9-3 |
| Washington | 0-3 | 2-2 | 1-3 | 3-2 | 4-0 | 3-2 | 3-1 | 4-0 | 1-2 | 0-3 | 2-1 | 0-3 | 0-2 | 1-2 | 23-24 |
| TOTALS | 4-30 | 18-16 | 19-15 | 20-14 | 19-15 | 17-17 | 19-15 | 15-19 | 17-17 | 12-22 | 23-11 | 8-26 | 7-15 | 7-22 | 205-253 |

All-Time Coaches

| Coach | Years | W-L | Percentage |
|------------------|-----------|-------|------------|
| Marynell Meadors | 2008-12 | 73-87 | 0.456 |
| Fred Williams | 2012-13 | 24-20 | 0.545 |
| Michael Cooper | 2014-17 | 63-73 | 0.463 |
| Nicki Collen | 2018-2020 | 38-52 | 0.422 |
| Mike Petersen | 2021 | 6-13 | 0.316 |
| Darius Taylor | 2021 | 1-9 | 0.100 |

2021 ATLANTA DREAM STATS

2021 Records In...

| | |
|----------------------|------|
| 1-point games..... | 0-1 |
| 2-3 point games..... | 1-5 |
| 4-5 point games..... | 3-2 |
| 6-7 point games..... | 2-2 |
| 8-9 point games..... | 0-2 |
| 10+ point games..... | 1-10 |

Starting Lineup Records

| | |
|--|-----|
| Carter, Sims, C. Williams, Hawkins, E. Williams..... | 0-1 |
| Carter, C. Williams, Hayes, Hawkins, E. Williams..... | 4-1 |
| Sims, C. Williams, Hayes, Hawkins, E. Williams..... | 0-2 |
| Sims, C. Williams, Hayes, Parker, E. Williams..... | 1-3 |
| Sims, C. Williams, Carter, Parker, E. Williams..... | 1-2 |
| Carter, C. Williams, Bradford, Parker, E. Williams..... | 0-2 |
| Sims, C. Williams, Bradford, Parker, E. Williams..... | 0-2 |
| Sims, C. Williams, Bradford, Dupree, E. Williams..... | 0-4 |
| Sims, C. Williams, Bradford, Billings, E. Williams..... | 0-1 |
| Sims, C. Williams, Hayes, Billings, E. Williams..... | 1-3 |
| McDonald, C. Williams, Hayes, Billings, E. Williams..... | 0-1 |

Record When Starting...

| Player | W-L | Pct. |
|-------------------------|------|------|
| Monique Billings..... | 1-5 | .167 |
| Crystal Bradford..... | 0-9 | .000 |
| Chennedy Carter..... | 5-6 | .455 |
| Candice Dupree..... | 0-4 | .000 |
| Tianna Hawkins..... | 4-4 | .500 |
| Tiffany Hayes..... | 6-10 | .375 |
| Aari McDonald..... | 0-1 | .000 |
| Cheyenne Parker..... | 2-9 | .182 |
| Odyssey Sims..... | 3-17 | .176 |
| Courtney Williams..... | 7-22 | .241 |
| Elizabeth Williams..... | 7-22 | .241 |

2021 Double Digit Games

| Player | Pts. | Reb. | Ast. | Dble-Dbls |
|--------------------|------|------|------|-----------|
| Monique Billings | 10 | 4 | - | 4 |
| Crystal Bradford | 8 | - | - | - |
| Chennedy Carter | 7 | - | - | - |
| Candice Dupree | 3 | - | - | - |
| Tianna Hawkins | 5 | - | - | - |
| Tiffany Hayes | 11 | - | - | - |
| Aari McDonald | 6 | - | - | - |
| Cheyenne Parker | 8 | - | - | - |
| Odyssey Sims | 9 | - | 1 | 1 |
| Courtney Williams | 23 | 5 | - | 5 |
| Elizabeth Williams | 5 | 2 | - | 1 |

2021 Game Leaders

| Led Atlanta In... | Pts. | Reb. | Ast. | Stl. | Blk. |
|--------------------|------|------|------|------|------|
| Monique Billings | 1 | 13 | - | 6 | 10 |
| Crystal Bradford | - | 2 | 1 | 6 | 2 |
| Chennedy Carter | 2 | - | 3 | - | 1 |
| Blake Dietrick | - | - | - | 1 | - |
| Candice Dupree | - | - | - | 1 | - |
| Tianna Hawkins | - | - | - | 2 | 5 |
| Tiffany Hayes | 6 | 1 | 3 | 7 | 1 |
| Aari McDonald | - | - | 2 | 4 | 3 |
| Cheyenne Parker | 1 | 3 | 1 | 3 | 6 |
| Odyssey Sims | 6 | 1 | 8 | 7 | - |
| Shekinna Stricklen | - | - | - | 3 | - |
| Courtney Williams | 14 | 11 | 18 | 4 | 3 |
| Elizabeth Williams | - | 4 | - | 6 | 16 |

2021 Records When...

| | |
|----------------------------------|------|
| Leading after the 1st Half..... | 6-6 |
| Tied after the 1st Half..... | 1-0 |
| Trailing after the 1st Half..... | 0-16 |

| | |
|----------------------|-----|
| Overtime..... | 1-1 |
| Double Overtime..... | 0-0 |

| | |
|-----------------------------|------|
| Outrebounding opponent..... | 3-7 |
| Tied in rebounding..... | 1-0 |
| Being outrebounded..... | 3-15 |

| | |
|------------------------------|------|
| Shooting at least 50%..... | 1-0 |
| Shooting between 40-50%..... | 4-13 |
| Shooting under 40%..... | 1-9 |

| | |
|-------------------------------------|------|
| Opponent shoots at least 50%..... | 0-10 |
| Opponent shoots between 40-50%..... | 4-11 |
| Opponent shoots under 40%..... | 3-1 |

| | |
|---------------------------------|-----|
| Scoring 50-59 points..... | 0-0 |
| Scoring 60-69 points..... | 1-5 |
| Scoring 70-79 points..... | 1-9 |
| Scoring 80-89 points..... | 1-6 |
| Scoring 90-99 points..... | 2-2 |
| Scoring 100 points or more..... | 2-0 |

| | |
|----------------------------------|-----|
| Allowing 50-59 points..... | 0-0 |
| Allowing 60-69 points..... | 2-2 |
| Allowing 70-79 points..... | 2-4 |
| Allowing 80-89 points..... | 2-9 |
| Allowing 90-99 points..... | 1-3 |
| Allowing 100 points or more..... | 0-3 |

| | |
|-------------------------|------|
| Making more FTs..... | 2-5 |
| Same number of FTs..... | 1-1 |
| Making fewer FTs..... | 4-17 |

| | |
|-------------------------|------|
| Making more 3Ps..... | 3-6 |
| Same number of 3Ps..... | 0-1 |
| Making fewer 3Ps..... | 4-15 |

| | |
|---------------------------|------|
| Committing more TOs..... | 1-3 |
| Same number of TOs..... | 0-1 |
| Committing fewer TOs..... | 6-18 |

2021 ATLANTA DREAM OVERALL STATISTICS

| Player | G | GS | MPG | PPG | OREB | DREB | RPG | APG | SPG | BPG | FG% | 3P% | FT% | TO | PF |
|--------------------|----|----|------|------|------|------|-----|-----|-----|-----|------|------|------|-----|-----|
| Courtney Williams | 29 | 29 | 34.3 | 16.7 | 1.5 | 5.1 | 6.6 | 4.2 | 1.1 | 0.5 | 41.7 | 38.9 | 61.2 | 1.9 | 1.7 |
| Chennedy Carter | 11 | 11 | 25.5 | 14.2 | 0.5 | 0.8 | 1.3 | 3.3 | 0.7 | 0.4 | 45.5 | 11.1 | 87.5 | 2.1 | 3.0 |
| Tiffany Hayes | 18 | 16 | 28.0 | 13.9 | 0.6 | 2.6 | 3.1 | 3.1 | 1.7 | 0.2 | 43.1 | 40.3 | 82.8 | 1.4 | 3.0 |
| Odyssey Sims | 28 | 21 | 25.7 | 8.9 | 0.5 | 2.1 | 2.6 | 3.7 | 1.3 | 0.1 | 36.6 | 22.7 | 71.7 | 1.6 | 1.4 |
| Crystal Bradford | 24 | 9 | 18.3 | 8.8 | 1.3 | 2.5 | 3.8 | 1.5 | 1.2 | 0.4 | 42.9 | 35.8 | 46.2 | 1.0 | 2.3 |
| Monique Billings | 28 | 6 | 23.5 | 8.0 | 2.7 | 3.8 | 6.5 | 1.0 | 1.2 | 1.0 | 51.4 | 0.0 | 66.7 | 1.4 | 2.5 |
| Candice Dupree | 7 | 4 | 20.6 | 6.9 | 0.6 | 3.3 | 3.9 | 0.6 | 0.7 | 0.1 | 42.3 | 0.0 | 50.0 | 0.7 | 0.9 |
| Aari McDonald | 27 | 1 | 15.2 | 6.4 | 0.3 | 1.3 | 1.6 | 1.8 | 0.8 | 0.1 | 32.9 | 33.3 | 91.5 | 1.0 | 1.8 |
| Elizabeth Williams | 29 | 29 | 23.4 | 5.8 | 2.1 | 2.8 | 4.9 | 1.2 | 1.1 | 1.2 | 51.1 | 0.0 | 51.1 | 0.8 | 1.9 |
| Tianna Hawkins | 25 | 8 | 16.6 | 5.2 | 0.6 | 2.8 | 3.4 | 0.7 | 0.4 | 0.5 | 39.5 | 25.4 | 91.3 | 1.2 | 2.3 |
| Blake Dietrick | 6 | 0 | 18.5 | 2.7 | 0.3 | 1.8 | 2.2 | 1.7 | 0.8 | 0.0 | 28.6 | 28.6 | 0.0 | 0.8 | 1.8 |
| Shekinna Stricklen | 22 | 0 | 9.9 | 2.6 | 0.1 | 0.6 | 0.7 | 0.4 | 0.5 | 0.2 | 26.9 | 21.7 | 40.0 | 0.1 | 1.2 |

DREAM SCORING

| Dream Scoring | High | Low |
|---------------|-------------------------|---------------------------|
| 1st Quarter | 31 (2 times) | 9 (at Los Angeles - 8/19) |
| 2nd Quarter | 32 (vs. WAS - 6/13) | 13 (2 times) |
| 3rd Quarter | 30 (vs. MIN - 6/23) | 14 (vs. Las Vegas - 8/26) |
| 4th Quarter | 26 (at Chicago - 5/25) | 8 (vs. Indiana - 7/11) |
| 1st Half | 53 (vs. Dallas - 5/27) | 26 (vs. Chicago - 5/19) |
| 2nd Half | 51 (vs. Chicago - 5/19) | 23 (vs. Las Vegas - 8/26) |
| 1OT | 8 (at New York - 5/29) | 6 (at Los Angeles - 8/17) |
| 2OT | | |

OPPONENT SCORING

| Opponent Scoring | High | Low |
|------------------|----------------------------|----------------------------|
| 1st Quarter | 29 (3 times) | 12 (at Dallas - 9/5) |
| 2nd Quarter | 28 (at New York - 5/29) | 9 (vs. New York - 6/29) |
| 3rd Quarter | 33 (at Las Vegas - 7/4) | 11 (at Dallas - 9/2) |
| 4th Quarter | 34 (at Las Vegas - 7/4) | 10 (at Los Angeles - 8/19) |
| 1st Half | 52 (at Minnesota - 6/6) | 30 (at Los Angeles - 8/17) |
| 2nd Half | 61 (at Las Vegas - 7/4) | 29 (vs. WAS - 6/13) |
| 1OT | 11 (at Los Angeles - 8/17) | 5 (at New York - 5/29) |
| 2OT | | |

2021 TEAM HIGHS AND LOWS

Dream Highs

| | | |
|--------------------|------|-----------------------|
| Points | 101 | 2 times |
| Scoring Margin | +23 | vs. Washington - 6/13 |
| Field Goals Made | 40 | at New York - 5/29 |
| Field Goals Att. | 90 | at Phoenix - 8/15 |
| Field Goal Pct. | 50.7 | vs. Washington - 6/13 |
| 3-Point FGs Made | 13 | vs. Washington - 6/13 |
| 3-Point FGs Att. | 29 | 2 times |
| 3-Point FG Pct. | 50 | at Indiana - 5/21 |
| Free Throws Made | 23 | vs. Dallas - 5/27 |
| Free Throws Att. | 33 | vs. Dallas - 5/27 |
| Free Throw Pct. | 86.4 | vs. Seattle - 6/11 |
| Offensive Rebounds | 17 | at Los Angeles - 8/17 |
| Defensive Rebounds | 35 | at New York - 5/29 |
| Total Rebounds | 48 | at Los Angeles - 8/17 |
| Assists | 26 | at Seattle - 7/2 |
| Steals | 17 | vs. Chicago - 5/19 |
| Turnovers | 21 | at Los Angeles - 8/19 |
| Blocked Shots | 9 | at Dallas - 9/2 |
| Personal Fouls | 28 | vs. Chicago - 5/19 |

Dream Lows

| | | |
|--------------------|------|------------------------|
| Points | 67 | vs. Connecticut - 5/14 |
| Scoring Margin | -24 | vs. Seattle - 6/9 |
| Field Goals Made | 23 | vs. Connecticut - 5/14 |
| Field Goals Att. | 64 | 2 times |
| Field Goal Pct. | 35.5 | 2 times |
| 3-Point FGs Made | 1 | vs. Indiana - 7/11 |
| 3-Point FGs Att. | 7 | at Dallas - 9/5 |
| 3-Point FG Pct. | 7.7 | vs. Indiana - 7/11 |
| Free Throws Made | 4 | 4 times |
| Free Throws Att. | 7 | 2 times |
| Free Throw Pct. | 38.9 | at Los Angeles - 8/17 |
| Offensive Rebounds | 3 | at Connecticut - 7/9 |
| Defensive Rebounds | 16 | at Indiana - 5/21 |
| Total Rebounds | 24 | vs. Phoenix - 8/21 |
| Assists | 11 | vs. Phoenix - 8/21 |
| Steals | 3 | vs. Chicago - 8/24 |
| Turnovers | 5 | 2 times |
| Blocked Shots | 1 | at Minnesota - 6/6 |
| Personal Fouls | 12 | vs. New York - 6/29 |

2021 OPPONENT HIGHS AND LOWS

Opponent Highs

| | | |
|--------------------|------|-----------------------|
| Points | 118 | at Las Vegas - 7/4 |
| Scoring Margin | +24 | vs. Seattle - 6/9 |
| Field Goals Made | 43 | at Las Vegas - 7/4 |
| Field Goals Att. | 80 | at Los Angeles - 8/17 |
| Field Goal Pct. | 59.7 | at Las Vegas - 7/4 |
| 3-Point FGs Made | 14 | 2 times |
| 3-Point FGs Att. | 34 | at New York - 5/29 |
| 3-Point FG Pct. | 64.7 | at Las Vegas - 7/4 |
| Free Throws Made | 28 | vs. Chicago - 5/19 |
| Free Throws Att. | 36 | vs. Chicago - 5/19 |
| Free Throw Pct. | 96.4 | at Chicago - 5/25 |
| Offensive Rebounds | 14 | 3 times |
| Defensive Rebounds | 37 | 2 times |
| Total Rebounds | 49 | vs. Indiana - 7/11 |
| Assists | 31 | at Las Vegas - 7/4 |
| Steals | 10 | at Dallas - 9/2 |
| Turnovers | 24 | 2 times |
| Blocked Shots | 10 | at Phoenix - 8/15 |
| Personal Fouls | 26 | vs. Dallas - 5/27 |

Opponent Lows

| | | |
|--------------------|------|-----------------------|
| Points | 78 | 2 times |
| Scoring Margin | -23 | vs. Washington - 6/13 |
| Field Goals Made | 23 | vs. Washington - 6/13 |
| Field Goals Att. | 57 | at Minnesota - 6/4 |
| Field Goal Pct. | 33.3 | at Dallas - 9/5 |
| 3-Point FGs Made | 1 | vs. Chicago - 5/19 |
| 3-Point FGs Att. | 13 | 2 times |
| 3-Point FG Pct. | 7.7 | vs. Chicago - 5/19 |
| Free Throws Made | 3 | at Dallas - 9/5 |
| Free Throws Att. | 5 | at Dallas - 9/5 |
| Free Throw Pct. | 61.5 | at Connecticut - 7/9 |
| Offensive Rebounds | 3 | vs. Seattle - 6/9 |
| Defensive Rebounds | 21 | vs. Washington - 6/13 |
| Total Rebounds | 31 | at Washington - 6/17 |
| Assists | 11 | at Dallas - 9/2 |
| Steals | 0 | at Indiana - 5/21 |
| Turnovers | 3 | at Minnesota - 6/4 |
| Blocked Shots | 0 | vs. Seattle - 6/11 |
| Personal Fouls | 9 | at New York - 5/29 |

2021 GAME-BY-GAME COMPARISON

| | TEAM | FG | FGA | FG% | 3P | 3PA | 3P% | FT | FTA | FT% | OR | DR | TOT | A | PF | ST | TO | BS | PT |
|------|---------------|----------|----------|--------------|----------|----------|--------------|----------|----------|--------------|----------|----------|----------|----------|----------|---------|----------|----------|-----------|
| 5/14 | SUN DREAM | 27 23 | 61 64 | 44.3 35.9 | 10 3 | 23 18 | 43.5 16.7 | 14 18 | 22 21 | 63.6 85.7 | 12 8 | 30 18 | 42 26 | 20 14 | 20 13 | 7 14 | 4 7 | 21 17 | 78 67 |
| 5/19 | SKY DREAM | 28 30 | 70 77 | 40.0 39.0 | 1 5 | 13 15 | 7.7 33.3 | 28 12 | 36 24 | 77.8 50.0 | 14 12 | 33 23 | 47 35 | 18 16 | 24 18 | 8 17 | 6 7 | 21 28 | 85 77 |
| 5/21 | DREAM FEVER | 30 31 | 75 67 | 40.0 46.3 | 11 6 | 22 18 | 50.0 33.3 | 12 11 | 16 13 | 75.0 84.6 | 11 6 | 16 28 | 27 34 | 20 20 | 5 16 | 7 0 | 6 4 | 19 16 | 83 79 |
| 5/25 | DREAM SKY | 31 25 | 74 62 | 41.9 40.3 | 8 6 | 18 17 | 44.4 35.3 | 20 27 | 25 28 | 80.0 96.4 | 15 13 | 17 28 | 32 41 | 17 22 | 10 21 | 11 5 | 6 5 | 21 22 | 90 83 |
| 5/27 | WINGS DREAM | 30 36 | 66 75 | 45.5 48.0 | 10 6 | 25 20 | 40.0 30.0 | 25 23 | 30 33 | 83.3 69.7 | 7 14 | 25 31 | 32 45 | 17 19 | 26 20 | 8 5 | 10 11 | 3 3 | 95 101 |
| 5/29 | DREAM LIBERTY | 40 27 | 87 69 | 46.0 39.1 | 6 14 | 21 34 | 28.6 41.2 | 4 19 | 8 21 | 50.0 90.5 | 10 4 | 35 32 | 45 36 | 21 23 | 19 9 | 11 9 | 17 20 | 8 3 | 90 87 |
| 6/4 | DREAM LYNX | 30 30 | 70 57 | 42.9 52.6 | 12 8 | 29 21 | 41.4 38.1 | 12 18 | 20 24 | 60.0 75.0 | 7 5 | 25 26 | 32 31 | 20 20 | 18 20 | 9 9 | 2 3 | 25 21 | 84 86 |
| 6/6 | DREAM LYNX | 28 35 | 64 68 | 43.8 51.5 | 10 11 | 25 25 | 40.0 44.0 | 14 19 | 19 24 | 73.7 79.2 | 13 10 | 20 22 | 33 32 | 16 26 | 18 10 | 7 12 | 1 1 | 22 20 | 80 100 |
| 6/9 | STORM DREAM | 35 29 | 64 82 | 54.7 35.4 | 12 3 | 22 26 | 54.5 11.5 | 13 10 | 16 13 | 81.3 76.9 | 3 16 | 29 26 | 32 42 | 27 18 | 12 12 | 7 9 | 9 2 | 16 18 | 95 71 |
| 6/11 | STORM DREAM | 31 26 | 61 72 | 50.8 36.1 | 10 4 | 21 18 | 47.6 22.2 | 14 19 | 16 22 | 87.5 86.4 | 5 8 | 36 25 | 41 33 | 22 14 | 13 6 | 2 5 | 0 2 | 20 15 | 86 75 |
| 6/13 | MYSTICS DREAM | 23 36 | 61 71 | 37.7 50.7 | 11 13 | 27 29 | 40.7 44.8 | 21 16 | 26 21 | 80.8 76.2 | 12 10 | 21 23 | 33 33 | 15 20 | 19 22 | 8 10 | 17 13 | 4 2 | 78 101 |
| 6/17 | DREAM MYSTICS | 34 33 | 70 67 | 48.6 49.3 | 8 13 | 21 31 | 38.1 41.9 | 17 17 | 21 20 | 81.0 85.0 | 8 5 | 29 26 | 37 31 | 23 22 | 17 17 | 14 7 | 13 15 | 6 1 | 93 96 |
| 6/23 | LYNX DREAM | 34 33 | 65 69 | 52.3 47.8 | 7 5 | 24 13 | 29.2 38.5 | 12 14 | 15 17 | 80.0 82.4 | 11 6 | 24 21 | 35 27 | 24 17 | 17 10 | 7 13 | 6 5 | 19 15 | 87 85 |
| 6/26 | LIBERTY DREAM | 32 29 | 59 71 | 54.2 40.8 | 13 4 | 32 17 | 40.6 23.5 | 24 16 | 28 19 | 85.7 84.2 | 6 7 | 30 18 | 36 25 | 22 14 | 18 14 | 5 13 | 5 2 | 15 21 | 101 78 |
| 6/29 | LIBERTY DREAM | 24 27 | 60 76 | 40.0 35.5 | 9 7 | 24 18 | 37.5 38.9 | 12 12 | 15 16 | 80.0 75.0 | 7 12 | 29 22 | 36 34 | 14 17 | 15 8 | 4 10 | 3 6 | 14 12 | 69 73 |
| 7/2 | DREAM STORM | 37 30 | 78 62 | 47.4 48.4 | 8 14 | 20 22 | 40.0 63.6 | 6 17 | 8 22 | 75.0 77.3 | 7 6 | 24 27 | 31 33 | 26 23 | 9 15 | 11 6 | 3 4 | 17 11 | 88 91 |
| 7/4 | DREAM ACES | 38 43 | 81 72 | 46.9 59.7 | 7 11 | 19 17 | 36.8 64.7 | 12 21 | 16 28 | 75.0 75.0 | 8 10 | 20 33 | 28 43 | 24 31 | 6 11 | 5 4 | 2 2 | 22 14 | 95 118 |
| 7/9 | DREAM SUN | 25 35 | 65 68 | 38.5 51.5 | 8 6 | 25 19 | 32.0 31.6 | 14 8 | 20 13 | 70.0 61.5 | 3 5 | 25 33 | 28 38 | 15 22 | 10 11 | 6 5 | 4 1 | 18 12 | 72 84 |
| 7/11 | FEVER DREAM | 27 27 | 65 76 | 41.5 35.5 | 5 1 | 17 13 | 29.4 7.7 | 20 13 | 26 20 | 76.9 65.0 | 12 8 | 37 22 | 49 30 | 18 16 | 19 6 | 2 10 | 4 5 | 18 22 | 79 68 |
| 8/15 | DREAM MERCURY | 37 35 | 90 70 | 41.1 50.0 | 3 10 | 17 25 | 17.6 40.0 | 4 12 | 7 17 | 57.1 70.6 | 15 11 | 25 34 | 40 45 | 18 27 | 9 17 | 8 3 | 4 10 | 23 12 | 81 92 |
| 8/17 | DREAM SPARKS | 34 36 | 88 80 | 38.6 45.0 | 5 5 | 20 22 | 25.0 22.7 | 7 8 | 18 10 | 38.9 80.0 | 17 6 | 31 35 | 48 41 | 20 29 | 13 14 | 10 9 | 2 5 | 13 18 | 80 85 |
| 8/19 | DREAM SPARKS | 26 25 | 66 56 | 39.4 44.6 | 8 5 | 25 14 | 32.0 35.7 | 4 11 | 7 17 | 57.1 64.7 | 11 8 | 23 24 | 34 32 | 15 16 | 18 19 | 7 6 | 5 2 | 21 15 | 64 66 |
| 8/21 | MERCURY DREAM | 30 29 | 57 72 | 52.6 40.3 | 9 5 | 19 21 | 47.4 23.8 | 15 6 | 22 8 | 68.2 75.0 | 10 6 | 37 18 | 47 24 | 22 11 | 22 9 | 4 13 | 5 5 | 14 19 | 84 69 |
| 8/24 | SKY DREAM | 34 33 | 66 79 | 51.5 41.8 | 8 7 | 17 22 | 47.1 31.8 | 10 6 | 14 9 | 71.4 66.7 | 4 14 | 31 24 | 35 38 | 24 19 | 12 7 | 3 6 | 4 6 | 17 13 | 86 79 |
| 8/26 | ACES DREAM | 32 26 | 73 72 | 43.8 36.1 | 3 7 | 13 23 | 23.1 30.4 | 11 12 | 15 15 | 73.3 80.0 | 9 5 | 34 29 | 43 34 | 26 19 | 10 8 | 6 8 | 5 6 | 13 20 | 78 71 |
| 9/2 | DREAM WINGS | 28 27 | 65 74 | 43.1 36.5 | 7 6 | 21 28 | 33.3 21.4 | 5 12 | 8 16 | 62.5 75.0 | 7 14 | 27 29 | 34 43 | 19 16 | 14 9 | 5 10 | 9 6 | 14 11 | 68 72 |
| 9/5 | DREAM WINGS | 28 26 | 70 78 | 40.0 33.3 | 2 9 | 7 25 | 28.6 36.0 | 11 3 | 13 5 | 84.6 60.0 | 9 13 | 33 32 | 42 45 | 17 11 | 11 16 | 5 5 | 9 14 | 6 4 | 69 64 |
| 9/8 | MERCURY DREAM | 26 33 | 60 70 | 43.3 47.1 | 8 3 | 18 13 | 44.4 23.1 | 16 6 | 18 10 | 88.9 60.0 | 4 4 | 28 27 | 32 31 | 16 19 | 16 8 | 7 12 | 3 3 | 14 14 | 76 75 |
| 9/10 | DREAM MYSTICS | 32 29 | 78 70 | 41.0 41.4 | 6 9 | 22 24 | 27.3 37.5 | 4 15 | 8 19 | 50.0 78.9 | 11 11 | 30 35 | 41 46 | 12 20 | 7 10 | 8 6 | 5 2 | 16 6 | 74 82 |

2021 INDIVIDUAL HIGHS

| Dream Highs | | | Opponent Highs | | |
|--------------------------------------|-----------------------|----|--------------------------------------|----------------------|----|
| Points | | | Points | | |
| Courtney Williams | at New York - 5/29 | 31 | Ariel Atkins | at Washington - 6/17 | 32 |
| Minutes | | | Minutes | | |
| Courtney Williams | at New York - 5/29 | 43 | Betnijah Laney | at New York - 5/29 | 41 |
| Field Goals Made | | | Field Goals Made | | |
| Courtney Williams | at New York - 5/29 | 14 | Sylvia Fowles | vs. Minnesota - 6/23 | 11 |
| Courtney Williams | at Phoenix - 8/15 | 14 | Jonquel Jones | at Connecticut - 7/9 | 11 |
| Field Goals Attempted | | | Field Goals Attempted | | |
| Courtney Williams | at Phoenix - 8/15 | 27 | Tina Charles | at Washington - 9/10 | 28 |
| Odyssey Sims | at Los Angeles - 8/17 | 27 | 3-Point Field Goals Made | | |
| 3-Point Field Goals Made | | | Sami Whitcomb | vs. New York - 6/26 | 7 |
| Nine times, most recent: | | | 3-Point Field Goals Attempted | | |
| Aari McDonald | at Los Angeles - 8/19 | 4 | Michaela Onyenwere | at New York - 5/29 | 14 |
| 3-Point Field Goals Attempted | | | Free Throws Made | | |
| Shekinna Stricklen | vs. Las Vegas - 8/26 | 10 | Betnijah Laney | at New York - 5/29 | 12 |
| Free Throws Made | | | Free Throws Attempted | | |
| Chennedy Carter | vs. Dallas - 5/27 | 11 | Napheesa Collier | at Minnesota - 6/4 | 13 |
| Free Throws Attempted | | | Rebounds | | |
| Chennedy Carter | vs. Dallas - 5/27 | 11 | Sylvia Fowles | vs. Minnesota - 6/23 | 19 |
| Rebounds | | | Assists | | |
| Monique Billings | at Dallas - 9/5 | 14 | Betnijah Laney | at New York - 5/29 | 11 |
| Courtney Williams | vs. Phoenix - 9/8 | 14 | Natasha Cloud | at Washington - 6/17 | 11 |
| Assists | | | Steals | | |
| Odyssey Sims | at Las Vegas - 7/4 | 13 | Sylvia Fowles | at Minnesota - 6/6 | 5 |
| Steals | | | Turnovers | | |
| Tiffany Hayes | at Washington - 6/17 | 5 | Courtney Vandersloot | at Chicago - 5/25 | 8 |
| Cheyenne Parker | vs. Minnesota - 6/23 | 5 | Blocked Shots | | |
| Turnovers | | | Sylvia Fowles | vs. Minnesota - 6/23 | 5 |
| Chennedy Carter | vs. Chicago - 5/19 | 6 | | | |
| Tiffany Hayes | at Minnesota - 6/4 | 6 | | | |
| Courtney Williams | at Los Angeles - 8/19 | 6 | | | |
| Blocked Shots | | | | | |
| Monique Billings | vs. Connecticut | 4 | | | |
| Elizabeth Williams | vs. Chicago - 5/19 | 4 | | | |
| Monique Billings | vs. Las Vegas - 8/26 | 4 | | | |
| Elizabeth Williams | at Dallas - 9/2 | 4 | | | |
| Elizabeth Williams | at Dallas - 9/5 | 4 | | | |

| 2021 DREAM RECORD BY TEAM | | | | | | | |
|---------------------------|------|------|------------|------------------|------|------|------------|
| Team | Home | Away | OVR (PCT.) | Team | Home | Away | OVR (PCT.) |
| Chicago (1-2) | 0-2 | 1-0 | 1-2 (.333) | Minnesota (0-3) | 0-0 | 0-3 | 0-3 (.000) |
| Connecticut (0-2) | 0-1 | 0-1 | 0-2 (.000) | New York (2-1) | 1-1 | 1-0 | 2-1 (.667) |
| Dallas (2-1) | 1-0 | 1-1 | 2-1 (.667) | Phoenix (0-3) | 0-2 | 0-1 | 0-3 (.000) |
| Indiana (1-1) | 0-1 | 1-0 | 1-1 (.500) | Seattle (0-3) | 0-2 | 0-3 | 0-3 (.000) |
| Las Vegas (0-2) | 0-1 | 0-1 | 0-2 (.000) | Washington (1-2) | 1-0 | 0-2 | 1-2 (.333) |
| Los Angeles (0-2) | 0-0 | 0-2 | 0-2 (.000) | | | | |

| 2021 DREAM WIN-LOSS MARGIN | | | | | | | | | | | | | | | | | | | | |
|----------------------------|---|---|---|---|---|---|---|---|---|----|----|----|----|----|----|----|----|----|----|-----|
| Margin | 1 | 2 | 3 | 4 | 5 | 6 | 7 | 8 | 9 | 10 | 11 | 12 | 13 | 14 | 15 | 16 | 17 | 18 | 19 | 20+ |
| Games Won By | | | 1 | 2 | 1 | 1 | 1 | | | | | | | | | | | | | 2 |
| Games Lost By | 1 | 3 | 2 | 1 | 1 | | 2 | 2 | | | 4 | 1 | | | 1 | | | | | 3 |

| 2021 DREAM RECORD BY DAY | | | |
|--------------------------|------|------|------------|
| Day | Home | Away | OVR (PCT.) |
| Sunday | 1-2 | 1-3 | 2-5 (.286) |
| Monday | - | - | - |
| Tuesday | 1-1 | 1-1 | 2-2 (.500) |
| Wednesday | 0-4 | 0-0 | 0-4 (.000) |
| Thursday | 1-1 | 0-3 | 1-4 (.200) |
| Friday | 0-2 | 1-4 | 1-6 (.143) |
| Saturday | 0-1 | 1-0 | 1-1 (.500) |

| 2021 DREAM RECORD BY MONTH | | | |
|----------------------------|------|------|------------|
| Month | Home | Away | OVR (PCT.) |
| May | 1-2 | 3-0 | 4-2 (.667) |
| June | 2-4 | 0-3 | 2-7 (.222) |
| July | 0-1 | 0-3 | 0-4 (.000) |
| August | 0-4 | 1-5 | 1-9 (.100) |

| 2021 MISC STATS | | | | | | | | | | | | | |
|----------------------|-----------------|-----------------------|---------------------|----------------------------------|----------------------|--------------------|---------------|---------------------|----------------------|--------------------------------|--------------------|------------------|--|
| | Dream Bench Pts | Dream Largest Deficit | Dream Pts the Paint | Dream 2 nd Chance Pts | Dream Fast Break Pts | Dream Pts off TO's | Opp Bench Pts | Opp Largest Deficit | Opp Pts in the Paint | Opp 2 nd Chance Pts | Opp Fast Break Pts | Opp Pts off TO's | |
| 5/14 vs. Connecticut | 12 | 20 | 28 | 9 | 9 | 18 | 8 | 1 | 28 | 13 | 10 | 15 | |
| 5/9 vs. Chicago | 18 | 23 | 40 | 16 | 10 | 25 | 6 | 0 | 48 | 14 | 14 | 17 | |
| 5/21 at Indiana | 30 | 5 | 28 | 11 | 12 | 17 | 30 | 8 | 24 | 10 | 8 | 2 | |
| 5/25 at Chicago | 28 | 2 | 36 | 12 | 10 | 19 | 15 | 15 | 28 | 16 | 5 | 7 | |
| 5/27 vs. Dallas | 30 | 3 | 52 | 11 | 10 | 10 | 19 | 11 | 30 | 5 | 13 | 21 | |
| 5/29 at New York | 21 | 3 | 38 | 6 | 7 | 23 | 8 | 13 | 20 | 2 | 7 | 24 | |
| 6/4 at Minnesota | 30 | 8 | 18 | 14 | 4 | 25 | 21 | 9 | 40 | 11 | 8 | 25 | |
| 6/6 at Minnesota | 41 | 21 | 32 | 15 | 6 | 26 | 38 | 0 | 30 | 17 | 20 | 9 | |
| 6/9 vs. Seattle | 19 | 26 | 46 | 16 | 13 | 9 | 30 | 2 | 28 | 2 | 3 | 13 | |
| 6/11 vs. Seattle | 18 | 18 | 24 | 2 | 6 | 15 | 26 | 2 | 30 | 11 | 0 | 4 | |
| 6/13 vs. Washington | 25 | 11 | 32 | 13 | 9 | 27 | 27 | 23 | 18 | 10 | 7 | 18 | |
| 6/17 at Washington | 32 | 4 | 34 | 6 | 12 | 19 | 13 | 14 | 34 | 8 | 5 | 15 | |
| 6/23 vs. Minnesota | 22 | 5 | 40 | 8 | 10 | 21 | 9 | 18 | 46 | 15 | 4 | 12 | |
| 6/26 vs. New York | 24 | 26 | 38 | 10 | 13 | 23 | 9 | 0 | 36 | 9 | 2 | 18 | |
| 6/29 vs. New York | 25 | 4 | 26 | 12 | 10 | 22 | 15 | 8 | 24 | 3 | 0 | 11 | |
| 7/2 at Seattle | 26 | 10 | 40 | 13 | 14 | 16 | 39 | 5 | 30 | 7 | 21 | 18 | |
| 7/4 at Las Vegas | 39 | 25 | 46 | 6 | 4 | 11 | 21 | 8 | 60 | 12 | 6 | 9 | |
| 7/9 at Connecticut | 36 | 15 | 26 | 2 | 11 | 8 | 6 | 2 | 46 | 6 | 5 | 13 | |
| 7/11 vs. Indiana | 15 | 17 | 32 | 6 | 17 | 21 | 11 | 10 | 36 | 14 | 4 | 11 | |
| 8/15 at Phoenix | 21 | 16 | 42 | 16 | 14 | 14 | 26 | 0 | 40 | 5 | 14 | 7 | |
| 8/17 at Los Angeles | 19 | 6 | 50 | 21 | 12 | 13 | 14 | 10 | 44 | 8 | 12 | 12 | |
| 8/19 at Los Angeles | 17 | 17 | 18 | 10 | 6 | 19 | 13 | 3 | 34 | 14 | 11 | 16 | |
| 8/21 vs. Phoenix | 30 | 17 | 40 | 8 | 12 | 19 | 9 | 1 | 32 | 13 | 6 | 10 | |
| 8/24 vs. Chicago | 25 | 15 | 34 | 16 | 6 | 20 | 13 | 2 | 42 | 8 | 8 | 5 | |
| 8/26 vs. Las Vegas | 20 | 7 | 32 | 7 | 5 | 13 | 20 | 10 | 50 | 12 | 6 | 6 | |
| 9/2 at Dallas | 19 | 11 | 26 | 11 | 17 | 14 | 14 | 4 | 32 | 8 | 19 | 18 | |
| 9/5 at Dallas | 2 | 3 | 36 | 10 | 10 | 12 | 24 | 9 | 26 | 26 | 9 | 13 | |
| 9/8 vs. Phoenix | 14 | 1 | 28 | 9 | 15 | 21 | 25 | 16 | 30 | 6 | 5 | 8 | |
| 9/10 at Washington | 11 | 16 | 38 | 6 | 4 | 13 | 24 | 6 | 34 | 16 | 0 | 12 | |



#25 MONIQUE BILLINGS F • 6-4 • 185 • 3 yrs • UCLA

2021 Highlights with Atlanta:

- » Started off the 2021 season setting a new career-high record with four blocks against Connecticut (5/14) and tying her career high record of 3 steals. She also went 6-for-6 from the charity stripe to lead both teams in free throws.
- » Her four blocks opening night was tied for the most of any player in opening weekend, current Dream season record.
- » Became the fourth different Dream player to record 4+ steals in a single quarter and the second this season (recorded all 4 of her steals against New York, 6/26, in the first quarter).
- » Back-to-back double-doubles on Dallas road trip: 15 PTS/11 REB (9/2) and 12 PTS/14 REB (9/5).
- » Three of her four double-doubles this season came against Dallas, one at Washington (9/10).

BILLINGS 2021 GAME-BY-GAME

| Date | Opp | GS | MP | FGM-A | 3PM-A | FTM-A | OREB | DREB | REB | AST | STL | BLK | TO | PF | PTS |
|------|-------|----|----|--|-------|-------|------|------|-----|-----|-----|-----|----|----|-----|
| 5/14 | CON | | 20 | 1-4 | 0-0 | 6-6 | 1 | 4 | 5 | 0 | 3 | 4 | 2 | 1 | 8 |
| 5/19 | CHI | | 26 | 1-5 | 0-0 | 1-4 | 4 | 4 | 8 | 1 | 0 | 3 | 2 | 5 | 3 |
| 5/21 | @ IND | | 27 | 2-7 | 0-0 | 1-2 | 2 | 5 | 7 | 2 | 2 | 1 | 0 | 4 | 5 |
| 5/25 | @ CHI | | 20 | 2-5 | 0-0 | 6-6 | 4 | 3 | 7 | 0 | 2 | 1 | 0 | 4 | 10 |
| 5/27 | DAL | | 26 | 4-6 | 0-0 | 2-4 | 5 | 6 | 11 | 3 | 0 | 1 | 2 | 2 | 10 |
| 5/29 | @ NYL | | 27 | 3-6 | 0-0 | 1-3 | 1 | 7 | 8 | 1 | 1 | 2 | 2 | 1 | 7 |
| 6/4 | @ MIN | | 25 | 1-2 | 0-0 | 0-0 | 3 | 2 | 5 | 0 | 0 | 1 | 3 | 3 | 2 |
| 6/6 | @ MIN | | 20 | 1-2 | 0-0 | 0-0 | 4 | 2 | 6 | 0 | 1 | 0 | 2 | 0 | 2 |
| 6/9 | SEA | | 21 | 1-3 | 0-0 | 3-4 | 0 | 4 | 4 | 2 | 1 | 0 | 1 | 3 | 5 |
| 6/11 | SEA | | 17 | 1-4 | 0-0 | 0-0 | 2 | 4 | 6 | 1 | 1 | 0 | 1 | 2 | 2 |
| 6/13 | WAS | | 14 | 2-5 | 0-0 | 2-3 | 2 | 0 | 2 | 0 | 0 | 0 | 2 | 3 | 6 |
| 6/17 | @ WAS | | 13 | 2-3 | 0-0 | 1-2 | 2 | 1 | 3 | 2 | 2 | 2 | 2 | 2 | 5 |
| 6/23 | MIN | | | Did Not Play - Injury/Illness (Non-Covid-19 Related Illness) | | | | | | | | | | | |
| 6/26 | NYL | | 28 | 3-6 | 0-0 | 0-0 | 4 | 5 | 9 | 1 | 4 | 1 | 4 | 3 | 6 |
| 6/29 | NYL | | 21 | 3-8 | 0-0 | 1-2 | 5 | 2 | 7 | 1 | 0 | 2 | 1 | 1 | 7 |
| 7/2 | @ SEA | | 19 | 2-3 | 0-0 | 4-4 | 2 | 6 | 8 | 1 | 2 | 0 | 0 | 2 | 8 |
| 7/4 | @ LVA | | 21 | 6-7 | 0-0 | 0-2 | 3 | 3 | 6 | 0 | 2 | 0 | 1 | 3 | 12 |
| 7/9 | @ CON | | 17 | 1-3 | 0-0 | 4-4 | 1 | 0 | 1 | 1 | 0 | 1 | 1 | 2 | 6 |
| 7/11 | IND | | 16 | 2-6 | 0-1 | 0-0 | 4 | 2 | 6 | 1 | 2 | 0 | 1 | 5 | 4 |
| 8/15 | @ PHO | | 19 | 3-6 | 0-0 | 0-0 | 5 | 3 | 8 | 0 | 1 | 0 | 2 | 4 | 6 |
| 8/17 | @ LAS | | 24 | 5-8 | 0-0 | 0-3 | 5 | 3 | 8 | 2 | 1 | 1 | 0 | 1 | 10 |
| 8/19 | @ LAS | | 17 | 1-4 | 0-0 | 0-0 | 0 | 1 | 1 | 1 | 1 | 0 | 0 | 4 | 2 |
| 8/21 | PHO | | 29 | 6-12 | 0-0 | 3-3 | 1 | 3 | 4 | 0 | 2 | 1 | 1 | 2 | 15 |
| 8/24 | CHI | * | 31 | 4-11 | 0-1 | 0-0 | 3 | 5 | 8 | 2 | 0 | 0 | 0 | 3 | 8 |
| 8/26 | LVA | * | 34 | 8-12 | 0-0 | 5-7 | 2 | 4 | 6 | 2 | 1 | 4 | 2 | 1 | 21 |
| 9/2 | @ DAL | * | 34 | 6-9 | 0-0 | 3-5 | 4 | 7 | 11 | 1 | 0 | 3 | 2 | 2 | 15 |
| 9/5 | @ DAL | * | 29 | 6-9 | 0-0 | 0-0 | 3 | 11 | 14 | 1 | 1 | 1 | 3 | 4 | 12 |
| 9/8 | PHO | * | 33 | 6-9 | 0-0 | 1-2 | 1 | 1 | 2 | 2 | 3 | 0 | 0 | 1 | 13 |
| 9/10 | @ WAS | * | 28 | 7-10 | 0-0 | 0-0 | 3 | 7 | 10 | 0 | 0 | 0 | 2 | 2 | 14 |
| 9/14 | IND | | | | | | | | | | | | | | |
| 9/16 | LAS | | | | | | | | | | | | | | |
| 9/19 | @ CON | | | | | | | | | | | | | | |

SEASON/CAREER HIGHS

| | |
|-------------------------|--------------|
| Points (2021) | 21 (8/26) |
| Points (Career) | 30 (7/26/20) |
| FG Made (2021) | 8 (8/26) |
| FG Made (Career) | 10 (7/26/20) |
| FG Attempted (2021) | 12 (2 times) |
| FG Attempted (Career) | 14 (2 times) |
| FT Made (2021) | 6 (2 times) |
| FT Made (Career) | 10 (7/26/20) |
| FT Attempted (2021) | 7 (8/26) |
| FT Attempted (Career) | 12 (7/26/20) |
| 3PT FG Made (2021) | NONE |
| 3PT FG Made (Career) | 1 (2019) |
| 3PT FG Attempt. (2021) | NONE |
| 3PT FG Att. (Career) | 1 (2019) |
| Off. Rebounds (2021) | 5 (4 times) |
| Off. Rebounds (Career) | 9 (7/14/19) |
| Def. Rebounds (2021) | 11 (9/5) |
| Def. Rebounds (Career) | 12 (9/5/19) |
| Total Rebounds (2021) | 14 (9/5) |
| Total Rebounds (Career) | 16 (7/14/19) |
| Assists (2021) | 3 (5/27) |
| Assists (Career) | 5 (8/19/20) |
| Blocks (2021) | 4 (2 times) |
| Blocks (Career) | 4 (2 times) |
| Steals (2021) | 4 (6/26) |
| Steals (Career) | 4 (6/26/21) |
| Minutes (2021) | 34 (2 times) |
| Minutes (Career) | 38 (8/19/20) |
| Double-Doubles (2021) | 4 |
| Double-Doubles (Career) | 9 |

BILLINGS CAREER

| Season | Team | G | GS | MIN | FGM-A | 3PM-A | FTM-A | OR | DR | TOT | AST | STL | BS | TO | PF | PTS |
|--------|------|-----|----|------|---------|-------|---------|-----|-----|-----|-----|-----|----|-----|-----|-----|
| 2018 | ATL | 32 | 0 | 353 | 41-93 | 0-0 | 24-32 | 37 | 51 | 88 | 12 | 14 | 1 | 14 | 37 | 106 |
| 2019 | ATL | 29 | 2 | 553 | 56-144 | 1-1 | 47-60 | 61 | 140 | 201 | 16 | 17 | 12 | 46 | 66 | 160 |
| 2020 | ATL | 22 | 16 | 596 | 68-170 | 0-0 | 51-67 | 58 | 129 | 187 | 27 | 24 | 18 | 42 | 62 | 187 |
| 2021 | ATL | 28 | 6 | 658 | 90-175 | 0-2 | 44-66 | 76 | 105 | 181 | 28 | 33 | 29 | 39 | 70 | 224 |
| Career | | 111 | 24 | 2160 | 255-582 | 1-3 | 166-225 | 232 | 425 | 657 | 83 | 88 | 60 | 140 | 235 | 677 |



#9 CRYSTAL BRADFORD

G • 6-0 • 171 • 1 yr • Central Michigan

2021 Highlights:

- » Checked in to her first WNBA game since 2015 against Connecticut (5/14), playing for 10 minutes and pulling down a team-high five boards and adding on 3 points from the free throw line, 2 assists and a steal. She tied her career records in defensive rebounds (5), total rebounds (5) and assists (2).
- » Career night against the Sky (5/19) saw career-high records in points (12), made field goals (5) and steals (4); tied career-high records in three point field goals made (2) and offensive rebounds (2). She became the first Dream player since 2016 to record at least 4 steals in a single quarter and the third different Atlanta player to do it.
- » Career stretch saw back-to-back career-record-setting nights against New York (6/29) and at Seattle (7/2), where she put up 17 points on 7 made field goals, 7 assists and 4 steals.
- » Started in her first game for the Dream against Seattle (7/2), setting new career-high records with 17 points and 7 assists, and recording 4 steals for the second time this season.

BRADFORD 2021 GAME-BY-GAME

| Date | Opp | GS | MP | FGM-A | 3PM-A | FTM-A | OREB | DREB | REB | AST | STL | BLK | TO | PF | PTS |
|------|-------|----|----|--------|-------|--|------|------|-----|-----|-----|-----|----|----|-----|
| 5/14 | CON | | 10 | 0 - 1 | 0 - 0 | 3 - 4 | 0 | 5 | 5 | 2 | 1 | 0 | 0 | 0 | 3 |
| 5/19 | CHI | | 18 | 5 - 8 | 2 - 4 | 0 - 0 | 2 | 2 | 4 | 1 | 4 | 1 | 1 | 5 | 12 |
| 5/21 | @ IND | | 12 | 3 - 8 | 2 - 4 | 0 - 0 | 2 | 1 | 3 | 3 | 1 | 1 | 0 | 2 | 8 |
| 5/25 | @ CHI | | 20 | 4 - 8 | 1 - 3 | 0 - 0 | 1 | 5 | 6 | 2 | 1 | 1 | 1 | 1 | 9 |
| 5/27 | DAL | | 10 | 2 - 7 | 0 - 3 | 0 - 2 | 2 | 2 | 4 | 0 | 1 | 0 | 0 | 4 | 4 |
| 5/29 | @ NYL | | 14 | 2 - 5 | 1 - 2 | 0 - 2 | 0 | 2 | 2 | 1 | 2 | 1 | 2 | 3 | 5 |
| 6/4 | @ MIN | | 10 | 4 - 6 | 4 - 5 | 0 - 0 | 0 | 1 | 1 | 0 | 0 | 0 | 0 | 3 | 12 |
| 6/6 | @ MIN | | 18 | 5 - 12 | 1 - 4 | 1 - 3 | 3 | 1 | 4 | 2 | 1 | 0 | 3 | 3 | 12 |
| 6/9 | SEA | | 14 | 1 - 4 | 0 - 1 | 0 - 0 | 0 | 2 | 2 | 0 | 1 | 0 | 1 | 0 | 2 |
| 6/11 | SEA | | 3 | 2 - 3 | 1 - 2 | 2 - 2 | 0 | 1 | 1 | 0 | 1 | 0 | 0 | 0 | 7 |
| 6/13 | WAS | | 6 | 2 - 6 | 1 - 4 | 1 - 2 | 1 | 1 | 2 | 0 | 1 | 0 | 0 | 0 | 6 |
| 6/17 | @ WAS | | 17 | 3 - 8 | 0 - 2 | 0 - 0 | 3 | 0 | 3 | 2 | 1 | 0 | 2 | 4 | 6 |
| 6/23 | MIN | | 16 | 3 - 4 | 1 - 1 | 0 - 2 | 0 | 0 | 0 | 1 | 0 | 0 | 0 | 1 | 7 |
| 6/26 | NYL | | 18 | 2 - 5 | 1 - 3 | 3 - 3 | 1 | 1 | 2 | 1 | 3 | 0 | 1 | 3 | 8 |
| 6/29 | NYL | | 24 | 5 - 10 | 4 - 6 | 0 - 0 | 3 | 4 | 7 | 2 | 1 | 0 | 0 | 1 | 14 |
| 7/2 | @ SEA | * | 29 | 7 - 15 | 3 - 7 | 0 - 0 | 0 | 3 | 3 | 7 | 4 | 0 | 1 | 4 | 17 |
| 7/4 | @ LVA | * | 31 | 3 - 12 | 1 - 4 | 0 - 0 | 2 | 4 | 6 | 2 | 0 | 0 | 3 | 1 | 7 |
| 7/9 | @ CON | * | 22 | 4 - 8 | 2 - 6 | 2 - 4 | 0 | 5 | 5 | 0 | 1 | 0 | 1 | 3 | 12 |
| 7/11 | IND | * | 25 | 5 - 8 | 0 - 1 | 4 - 7 | 0 | 1 | 1 | 1 | 1 | 1 | 1 | 3 | 14 |
| 8/15 | @ PHO | * | 27 | 4 - 15 | 0 - 3 | 1 - 2 | 4 | 3 | 7 | 1 | 0 | 0 | 0 | 4 | 9 |
| 8/17 | @ LAS | * | 33 | 4 - 11 | 1 - 4 | 1 - 4 | 3 | 5 | 8 | 3 | 0 | 0 | 2 | 2 | 10 |
| 8/19 | @ LAS | * | 22 | 3 - 7 | 1 - 4 | 0 - 1 | 0 | 5 | 5 | 2 | 1 | 2 | 2 | 3 | 7 |
| 8/21 | PHO | * | 28 | 6 - 13 | 1 - 4 | 0 - 1 | 2 | 3 | 5 | 1 | 3 | 2 | 1 | 5 | 13 |
| 8/24 | CHI | * | 14 | 3 - 7 | 1 - 4 | 0 - 0 | 2 | 3 | 5 | 2 | 0 | 0 | 1 | 1 | 7 |
| 8/26 | LVA | | | | | Did not play - Injury/Illness (Right Foot) | | | | | | | | | |
| 9/2 | @ DAL | | | | | Did not play - Injury/Illness (Right Foot) | | | | | | | | | |
| 9/5 | @ DAL | | | | | Did not play - Injury/Illness (Right Foot) | | | | | | | | | |
| 9/8 | PHO | | | | | Did not play - Injury/Illness (Right Foot) | | | | | | | | | |
| 9/10 | @ WAS | | | | | Did not play - Injury/Illness (Right Foot) | | | | | | | | | |
| 9/14 | IND | | | | | | | | | | | | | | |
| 9/16 | LAS | | | | | | | | | | | | | | |
| 9/19 | @ CON | | | | | | | | | | | | | | |

SEASON/CAREER HIGHS

| | |
|-------------------------|--------------|
| Points (2021) | 17 (7/2) |
| Points (Career) | 17 (7/2/21) |
| FG Made (2021) | 7 (7/2) |
| FG Made (Career) | 7 (7/2/21) |
| FG Attempted (2021) | 15 (2 times) |
| FG Attempted (Career) | 15 (2 times) |
| FT Made (2021) | 3 (2 times) |
| FT Made (Career) | |
| FT Attempted (2021) | 4 (2 times) |
| FT Attempted (Career) | |
| 3PT FG Made (2021) | 4 (2 times) |
| 3PT FG Made (Career) | 4 (2 times) |
| 3PT FG Attempt. (2021) | 7 (7/2) |
| 3PT FG Att. (Career) | 7 (7/2/21) |
| Off. Rebounds (2021) | 4 (8/15) |
| Off. Rebounds (Career) | 4 (8/15/21) |
| Def. Rebounds (2021) | 5 (4 times) |
| Def. Rebounds (Career) | 5 (5 times) |
| Total Rebounds (2021) | 8 (8/17) |
| Total Rebounds (Career) | 8 (8/17/21) |
| Assists (2021) | 7 (7/2) |
| Assists (Career) | 7 (7/2/21) |
| Blocks (2021) | 2 (2 times) |
| Blocks (Career) | 2 (3 times) |
| Steals (2021) | 4 (2 times) |
| Steals (Career) | 4 (2 times) |
| Minutes (2021) | 33 (8/17) |
| Minutes (Career) | 33 (8/17/21) |
| Double-Doubles (2021) | NONE |
| Double-Doubles (Career) | N/A |

BRADFORD CAREER

| Season | Team | G | GS | MIN | FGM-A | 3PM-A | FTM-A | OR | DR | TOT | AST | STL | BS | TO | PF | PTS |
|--------|------|----|----|-----|----------|---------|---------|----|----|-----|-----|-----|----|----|----|-----|
| 2015 | LAS | 15 | 1 | 142 | 15 - 54 | 6 - 26 | 5 - 7 | 4 | 16 | 20 | 7 | 6 | 2 | 5 | 20 | 41 |
| 2021 | ATL | 22 | 7 | 399 | 73 - 171 | 27 - 73 | 18 - 38 | 27 | 54 | 81 | 33 | 26 | 7 | 21 | 50 | 191 |
| Career | | 37 | 8 | 541 | 88 - 225 | 33 - 99 | 23 - 45 | 31 | 70 | 101 | 40 | 32 | 9 | 26 | 70 | 232 |



#3 CHENNEDY CARTER

G • 5-9 • 145 • 1 yr • Texas A&M

Chennedy Carter - Kennedy

2021 Highlights:

- » Scored 10 points in the team's season opener against Connecticut (5/14), adding on 2 assists and a steal.
- » Scored 21 points against Chicago (5/19) for her sixth career 20-point performance.
- » Led the team with 23 points against Indiana (5/21) for her seventh career 20-point outing.
- » Scored 21 points and went 11-for-11 from the free throw line (career high) against Dallas (5/27) for her 8th career 20-point game.
- » Left the game at New York (5/29) with a hyperextended elbow after scoring 12 points.
- » Returned for her first game back on June 23 against Minnesota, scoring 16 points with 4 assists.
- » Scored a season-best 24 points against New York (6/26) in a season-high 33 minutes, making 10 field goals with four free throws.

CARTER 2021 GAME-BY-GAME

| Date | Opp | GS | MP | FGM-A | 3PM-A | FTM-A | OREB | DREB | REB | AST | STL | BLK | TO | PF | PTS |
|------|-------|----|----|---------|---|---------|------|------|-----|-----|-----|-----|----|----|-----|
| 5/14 | CON | * | 26 | 4 - 12 | 0 - 2 | 2 - 2 | 1 | 0 | 1 | 2 | 1 | 0 | 3 | 3 | 10 |
| 5/19 | CHI | * | 29 | 8 - 15 | 0 - 0 | 5 - 5 | 1 | 3 | 4 | 6 | 1 | 0 | 6 | 4 | 21 |
| 5/21 | @ IND | * | 32 | 9 - 17 | 1 - 1 | 4 - 6 | 1 | 0 | 1 | 4 | 1 | 1 | 2 | 3 | 23 |
| 5/25 | @ CHI | * | 22 | 3 - 8 | 0 - 0 | 1 - 1 | 0 | 0 | 0 | 3 | 2 | 1 | 1 | 4 | 7 |
| 5/27 | DAL | * | 29 | 5 - 10 | 0 - 1 | 11 - 11 | 2 | 2 | 4 | 4 | 0 | 1 | 1 | 4 | 21 |
| 5/29 | @ NYL | * | 19 | 6 - 12 | 0 - 2 | 0 - 0 | 0 | 1 | 1 | 2 | 1 | 0 | 4 | 2 | 12 |
| 6/4 | @ MIN | | | | Did not play - Injury/Illness (Right Elbow) | | | | | | | | | | |
| 6/6 | @ MIN | | | | Did not play - Injury/Illness (Right Elbow) | | | | | | | | | | |
| 6/9 | SEA | | | | Did not play - Injury/Illness (Right Elbow) | | | | | | | | | | |
| 6/11 | SEA | | | | Did not play - Injury/Illness (Right Elbow) | | | | | | | | | | |
| 6/13 | WAS | | | | Did not play - Injury/Illness (Right Elbow) | | | | | | | | | | |
| 6/17 | @ WAS | | | | Did not play - Injury/Illness (Right Elbow) | | | | | | | | | | |
| 6/23 | MIN | * | 26 | 7 - 12 | 0 - 0 | 2 - 2 | 0 | 1 | 1 | 4 | 0 | 0 | 4 | 2 | 16 |
| 6/26 | NYL | * | 33 | 10 - 19 | 0 - 1 | 4 - 5 | 0 | 1 | 1 | 2 | 1 | 0 | 0 | 5 | 24 |
| 6/29 | NYL | * | 34 | 3 - 13 | 0 - 1 | 5 - 6 | 0 | 1 | 1 | 4 | 1 | 1 | 0 | 2 | 11 |
| 7/2 | @ SEA | * | 26 | 4 - 12 | 0 - 0 | 1 - 2 | 0 | 0 | 0 | 3 | 0 | 0 | 2 | 2 | 9 |
| 7/4 | @ LVA | * | 6 | 1 - 2 | 0 - 1 | 0 - 0 | 0 | 0 | 0 | 2 | 0 | 0 | 0 | 2 | 2 |
| 7/9 | @ CON | | | | Did not play - Suspended | | | | | | | | | | |
| 7/11 | IND | | | | Did not play - Suspended | | | | | | | | | | |
| 8/15 | @ PHO | | | | Did not play - Suspended | | | | | | | | | | |
| 8/17 | @ LAS | | | | Did not play - Suspended | | | | | | | | | | |
| 8/19 | @ LAS | | | | Did not play - Suspended | | | | | | | | | | |
| 8/21 | PHO | | | | Did not play - Suspended | | | | | | | | | | |
| 8/24 | CHI | | | | Did not play - Suspended | | | | | | | | | | |
| 8/26 | LVA | | | | Did not play - Suspended | | | | | | | | | | |
| 9/2 | @ DAL | | | | Did not play - Suspended | | | | | | | | | | |
| 9/5 | @ DAL | | | | Did not play - Suspended | | | | | | | | | | |
| 9/8 | PHO | | | | Did not play - Suspended | | | | | | | | | | |
| 9/10 | @ WAS | | | | Did not play - Suspended | | | | | | | | | | |
| 9/14 | IND | | | | | | | | | | | | | | |
| 9/16 | LAS | | | | | | | | | | | | | | |
| 9/19 | @ CON | | | | | | | | | | | | | | |

SEASON/CAREER HIGHS

| | |
|-------------------------|--------------|
| Points (2021) | 24 (6/26) |
| Points (Career) | 35 (8/6/20) |
| FG Made (2021) | 10 (6/26) |
| FG Made (Career) | 12 (9/13/20) |
| FG Attempted (2021) | 19 (6/26) |
| FG Attempted (Career) | 22 (9/13/20) |
| FT Made (2021) | 11 (5/27) |
| FT Made (Career) | 11 (5/27/21) |
| FT Attempted (2021) | 11 (5/27) |
| FT Attempted (Career) | 11 (5/27/21) |
| 3PT FG Made (2021) | 1 (5/21) |
| 3PT FG Made (Career) | 3 (8/6/20) |
| 3PT FG Attempt. (2021) | 2 (5/14) |
| 3PT FG Att. (Career) | 4 (2 times) |
| Off. Rebounds (2021) | 2 (5/27) |
| Off. Rebounds (Career) | 2 (3 times) |
| Def. Rebounds (2021) | 3 (5/19) |
| Def. Rebounds (Career) | 5 (7/26/20) |
| Total Rebounds (2021) | 4 (2 times) |
| Total Rebounds (Career) | 5 (2 times) |
| Assists (2021) | 6 (5/19) |
| Assists (Career) | 8 (7/26/20) |
| Blocks (2021) | 1 (4 times) |
| Blocks (Career) | 1 (7 times) |
| Steals (2021) | 2 (5/25) |
| Steals (Career) | 2 (4 times) |
| Minutes (2021) | 34 (6/29) |
| Minutes (Career) | 36 (8/6/20) |
| Double-Doubles (2021) | NONE |
| Double-Doubles (Career) | NONE |

CARTER CAREER

| Season | Team | G | GS | MIN | FGM-A | 3PM-A | FTM-A | OR | DR | TOT | AST | STL | BS | TO | PF | PTS |
|--------|------|----|----|-----|-----------|---------|----------|----|----|-----|-----|-----|----|----|----|-----|
| 2020 | ATL | 16 | 16 | 406 | 106 - 224 | 12 - 32 | 55 - 67 | 8 | 28 | 36 | 54 | 14 | 5 | 43 | 51 | 279 |
| 2021 | ATL | 11 | 11 | 280 | 60 - 132 | 1 - 9 | 35 - 40 | 5 | 9 | 14 | 36 | 8 | 4 | 23 | 33 | 156 |
| Career | | 27 | 27 | 686 | 166 - 356 | 13 - 41 | 90 - 107 | 13 | 37 | 50 | 91 | 22 | 9 | 66 | 90 | 435 |



#11 BLAKE DIETRICK

G • 5-10 • 169 • 4 yrs • Princeton

2021 Highlights:

- » Put up 8 points with 2 made three's in her 2021 Dream debut, adding on 2 defensive rebounds, 2 assists and a steal.
- » Dished out a season-high 3 assists with 3 defensive rebounds in a season-most 27 minutes at Dallas (9/2).

DIETRICK 2021 GAME-BY-GAME

| Date | Opp | GS | MP | FGM-A | 3PM-A | FTM-A | OREB | DREB | REB | AST | STL | BLK | TO | PF | PTS |
|------|-------|----|----|-------|-------|-------|------|------|-----|-----|-----|-----|----|----|-----|
| 8/24 | CHI | | 23 | 3 - 5 | 2 - 4 | 0 - 0 | 0 | 2 | 2 | 2 | 1 | 0 | 0 | 3 | 8 |
| 8/26 | LVA | | 17 | 0 - 5 | 0 - 4 | 0 - 0 | 0 | 2 | 2 | 1 | 1 | 0 | 2 | 1 | 0 |
| 9/2 | @ DAL | | 27 | 1 - 3 | 1 - 2 | 0 - 0 | 0 | 3 | 3 | 3 | 2 | 0 | 1 | 1 | 3 |
| 9/5 | @ DAL | | 13 | 0 - 1 | 0 - 0 | 0 - 0 | 0 | 2 | 2 | 1 | 0 | 0 | 1 | 1 | 0 |
| 9/8 | PHO | | 16 | 1 - 3 | 1 - 2 | 0 - 0 | 0 | 1 | 1 | 2 | 1 | 0 | 1 | 2 | 3 |
| 9/10 | @ WAS | | 15 | 1 - 4 | 0 - 2 | 0 - 0 | 2 | 1 | 3 | 1 | 0 | 0 | 0 | 3 | 2 |
| 9/14 | IND | | | | | | | | | | | | | | |
| 9/16 | LAS | | | | | | | | | | | | | | |
| 9/19 | @ CON | | | | | | | | | | | | | | |

SEASON/CAREER HIGHS

| | |
|-------------------------|--------------|
| Points (2020) | 8 (8/24) |
| Points (Career) | 16 (8/12/20) |
| FG Made (2020) | 3 (8/24) |
| FG Made (Career) | 6 (2 times) |
| FG Attempted (2020) | 5 (8/24) |
| FG Attempted (Career) | 13 (6/29/20) |
| FT Made (2020) | N/A |
| FT Made (Career) | 3 (6/27/18) |
| FT Attempted (2020) | N/A |
| FT Attempted (Career) | 4 (2 times) |
| 3PT FG Made (2020) | 2 (8/24) |
| 3PT FG Made (Career) | 4 (8/12/20) |
| 3PT FG Attempt. (2020) | 4 (8/24) |
| 3PT FG Att. (Career) | 9 (8/12/20) |
| Off. Rebounds (2020) | N/A |
| Off. Rebounds (Career) | 2 (2 times) |
| Def. Rebounds (2020) | 3 (2 times) |
| Def. Rebounds (Career) | 4 (7/26/20) |
| Total Rebounds (2020) | 3 (9/2) |
| Total Rebounds (Career) | 5 (8/12/20) |
| Assists (2020) | 3 (9/2) |
| Assists (Career) | 7 (8/14/20) |
| Blocks (2020) | N/A |
| Blocks (Career) | 3 (8/14/20) |
| Steals (2020) | 2 (9/2) |
| Steals (Career) | 3 (2 times) |
| Minutes (2020) | 27 (9/2) |
| Minutes (Career) | 40 (8/12/20) |
| Double-Doubles (2020) | NONE |
| Double-Doubles (Career) | NONE |

DIETRICK CAREER

| Season | Team | G | GS | MIN | FGM-A | 3PM-A | FTM-A | OR | DR | TOT | AST | STL | BS | TO | PF | PTS |
|--------|------|----|----|-----|----------|----------|---------|----|----|-----|-----|-----|----|----|----|-----|
| 2016 | TOT | 3 | 0 | 14 | 1 - 2 | 0 - 1 | 2 - 2 | 0 | 3 | 3 | 0 | 0 | 0 | 1 | 1 | 4 |
| 2018 | ATL | 26 | 0 | 186 | 12 - 35 | 9 - 23 | 4 - 6 | 2 | 12 | 14 | 11 | 7 | 0 | 12 | 21 | 37 |
| 2019 | SEA | 17 | 1 | 106 | 1 - 10 | 0 - 6 | 4 - 6 | 1 | 9 | 10 | 16 | 3 | 2 | 10 | 14 | 6 |
| 2020 | ATL | 21 | 4 | 445 | 49 - 102 | 26 - 57 | 5 - 8 | 8 | 26 | 34 | 71 | 18 | 3 | 39 | 42 | 129 |
| 2021 | ATL | 6 | 0 | 111 | 6 - 21 | 4 - 14 | 0 - 0 | 2 | 11 | 13 | 10 | 5 | 0 | 5 | 11 | 16 |
| Career | | 74 | 5 | 880 | 69 - 172 | 39 - 102 | 15 - 22 | 13 | 63 | 76 | 112 | 33 | 5 | 68 | 89 | 192 |



#24 CANDICE DUPREE F • 6-2 • 178 • 15 yrs • Temple

2021 Highlights (SEA):

- » Played in 16 games with two starts for Seattle to open the season.
- » Scored a season-high 12 points against Las Vegas (5/14) in the first game of the season, tying that record against Minnesota (5/28).
- » Season-best performance on the boards came at Dallas (5/22), recording three offensive, 5 defensive and 8 total rebounds in a win over the Wings.

2021 Highlights (ATL):

- » Signed as a free agent by the Dream on July 26, 2021.
- » Scored 9 points with 4 rebounds in her debut with Atlanta.
- » Season-best performance at Los Angeles (8/17) with 12 points, 8 rebounds and 3 steals in a season-high 36 minutes.

DUPREE 2021 GAME-BY-GAME - SEATTLE

| Date | Opp | GS | MP | FGM-A | 3PM-A | FTM-A | OREB | DREB | REB | AST | STL | BLK | TO | PF | PTS |
|------|-------|----|----|-------|-------|-------|------|------|-----|-----|-----|-----|----|----|-----|
| 5/14 | LVA | * | 30 | 6-16 | 0-0 | 0-0 | 2 | 3 | 5 | 0 | 1 | 2 | 2 | 1 | 12 |
| 5/18 | LVA | | 15 | 1-4 | 0-1 | 0-0 | 0 | 1 | 1 | 1 | 0 | 0 | 1 | 2 | 2 |
| 5/20 | @ MIN | | 21 | 5-7 | 0-0 | 0-0 | 0 | 4 | 4 | 3 | 0 | 1 | 2 | 1 | 10 |
| 5/22 | @ DAL | * | 23 | 3-8 | 0-0 | 2-2 | 3 | 5 | 8 | 1 | 1 | 0 | 1 | 0 | 8 |
| 5/25 | CON | | 8 | 3-4 | 1-1 | 1-1 | 0 | 0 | 0 | 0 | 0 | 0 | 1 | 0 | 8 |
| 5/28 | MIN | | 24 | 6-9 | 0-1 | 0-0 | 0 | 3 | 3 | 1 | 2 | 0 | 0 | 2 | 12 |
| 6/1 | IND | | 15 | 4-8 | 0-1 | 0-0 | 0 | 2 | 2 | 0 | 1 | 0 | 1 | 1 | 8 |
| 6/4 | DAL | | 12 | 1-3 | 0-0 | 0-0 | 0 | 2 | 2 | 0 | 0 | 0 | 1 | 1 | 2 |
| 6/6 | DAL | | 10 | 0-3 | 0-0 | 0-0 | 0 | 3 | 3 | 0 | 0 | 0 | 0 | 2 | 0 |
| 6/9 | @ ATL | | 20 | 2-6 | 0-0 | 0-0 | 0 | 3 | 3 | 1 | 1 | 0 | 0 | 2 | 4 |
| 6/11 | @ ATL | | 19 | 2-7 | 0-0 | 2-2 | 0 | 3 | 3 | 0 | 0 | 0 | 3 | 2 | 6 |
| 6/13 | @ CON | | 16 | 2-6 | 0-0 | 2-2 | 0 | 1 | 1 | 1 | 0 | 0 | 1 | 3 | 6 |
| 6/15 | @ IND | | 13 | 1-2 | 0-0 | 2-2 | 1 | 2 | 3 | 3 | 0 | 0 | 0 | 1 | 4 |
| 6/17 | @ IND | | 11 | 0-3 | 0-0 | 0-0 | 0 | 0 | 0 | 0 | 0 | 0 | 0 | 0 | 0 |
| 6/22 | WAS | | 16 | 4-7 | 0-0 | 2-2 | 1 | 0 | 1 | 0 | 1 | 0 | 0 | 2 | 10 |
| 6/27 | @ LVA | | 7 | 1-1 | 0-0 | 0-0 | 1 | 0 | 1 | 0 | 0 | 0 | 0 | 1 | 2 |

DUPREE 2021 GAME-BY-GAME - ATLANTA

| Date | Opp | GS | MP | FGM-A | 3PM-A | FTM-A | OREB | DREB | REB | AST | STL | BLK | TO | PF | PTS |
|------|-------|----|----|-------|-------|--------------------------------------|------|------|-----|-----|-----|-----|----|----|-----|
| 8/15 | @ PHO | * | 26 | 4-12 | 0-0 | 1-1 | 1 | 3 | 4 | 0 | 0 | 0 | 1 | 2 | 9 |
| 8/17 | @ LAS | * | 36 | 6-11 | 0-0 | 0-0 | 0 | 8 | 8 | 1 | 3 | 0 | 1 | 1 | 12 |
| 8/19 | @ LAS | * | 32 | 4-7 | 0-1 | 2-2 | 2 | 3 | 5 | 1 | 0 | 0 | 0 | 1 | 10 |
| 8/21 | PHO | * | 2 | 0-1 | 0-0 | 0-0 | 0 | 0 | 0 | 0 | 0 | 0 | 0 | 0 | 0 |
| 8/24 | CHI | | | | | Did not play - Injury/Illness (Back) | | | | | | | | | |
| 8/26 | LVA | | | | | Did not play - Injury/Illness (Back) | | | | | | | | | |
| 9/2 | @ DAL | | | | | Did not play - Injury/Illness (Back) | | | | | | | | | |
| 9/5 | @ DAL | | 8 | 0-3 | 0-0 | 0-0 | 0 | 4 | 4 | 1 | 0 | 0 | 1 | 0 | 0 |
| 9/8 | PHO | | 15 | 5-8 | 0-0 | 1-3 | 0 | 1 | 1 | 0 | 1 | 0 | 1 | 0 | 11 |
| 9/10 | @ WAS | | 25 | 3-10 | 0-0 | 0-2 | 1 | 4 | 5 | 1 | 1 | 1 | 1 | 2 | 6 |
| 9/14 | IND | | | | | | | | | | | | | | |
| 9/16 | LAS | | | | | | | | | | | | | | |
| 9/19 | @ CON | | | | | | | | | | | | | | |

DUPREE CAREER

| Season | Team | G | GS | MIN | FGM-A | 3PM-A | FTM-A | OR | DR | TOT | AST | STL | BS | TO | PF | PTS |
|--------|------|-----|-----|-------|-----------|--------|-----------|-----|------|------|-----|-----|-----|-----|-----|------|
| 2006 | CHI | 34 | 31 | 1032 | 186-407 | 0-5 | 95-122 | 55 | 133 | 188 | 60 | 43 | 25 | 60 | 72 | 467 |
| 2007 | CHI | 33 | 33 | 1078 | 210-471 | 0-5 | 124-160 | 79 | 175 | 254 | 46 | 29 | 41 | 81 | 82 | 544 |
| 2008 | CHI | 34 | 34 | 1124 | 208-455 | 1-7 | 138-177 | 77 | 193 | 270 | 78 | 36 | 45 | 98 | 78 | 555 |
| 2009 | CHI | 34 | 34 | 1186 | 204-476 | 24-62 | 102-130 | 76 | 192 | 268 | 75 | 35 | 41 | 81 | 54 | 534 |
| 2010 | PHO | 34 | 34 | 1014 | 231-348 | 0-1 | 73-78 | 75 | 182 | 257 | 45 | 35 | 28 | 65 | 84 | 535 |
| 2011 | PHO | 34 | 34 | 1075 | 198-361 | 1-6 | 98-115 | 86 | 193 | 279 | 61 | 19 | 25 | 67 | 74 | 495 |
| 2012 | PHO | 13 | 12 | 345 | 71-147 | 0-1 | 30-37 | 16 | 46 | 62 | 17 | 8 | 7 | 27 | 20 | 172 |
| 2013 | PHO | 32 | 32 | 1057 | 204-396 | 0-3 | 78-87 | 48 | 156 | 204 | 61 | 34 | 13 | 65 | 58 | 486 |
| 2014 | PHO | 34 | 34 | 1062 | 210-394 | 0-0 | 73-86 | 41 | 216 | 257 | 80 | 29 | 18 | 48 | 47 | 493 |
| 2015 | PHO | 33 | 33 | 1028 | 192-375 | 0-1 | 81-101 | 40 | 128 | 168 | 55 | 34 | 12 | 48 | 46 | 465 |
| 2016 | PHO | 32 | 32 | 930 | 152-281 | 0-1 | 57-72 | 39 | 132 | 171 | 61 | 26 | 5 | 34 | 58 | 361 |
| 2017 | IND | 33 | 33 | 1049 | 214-433 | 0-2 | 67-76 | 35 | 156 | 191 | 54 | 31 | 15 | 45 | 62 | 495 |
| 2018 | IND | 32 | 32 | 1006 | 198-406 | 0-1 | 59-72 | 37 | 169 | 206 | 54 | 30 | 11 | 51 | 55 | 455 |
| 2019 | IND | 34 | 34 | 1043 | 174-369 | 0-3 | 47-56 | 25 | 146 | 171 | 86 | 15 | 19 | 51 | 34 | 395 |
| 2020 | IND | 22 | 22 | 665 | 116-251 | 3-18 | 41-48 | 27 | 98 | 125 | 55 | 16 | 9 | 28 | 27 | 276 |
| 2021 | TOT | 23 | 6 | 404 | 63-146 | 1-5 | 15-19 | 12 | 55 | 67 | 15 | 12 | 4 | 18 | 27 | 142 |
| Career | | 491 | 470 | 15098 | 2831-5716 | 30-121 | 1178-1436 | 768 | 2370 | 3138 | 903 | 432 | 318 | 867 | 878 | 6870 |

SEASON/CAREER HIGHS

| | |
|-------------------------|--------------|
| Points (2021) | 12 (3 times) |
| Points (Career) | 32 (7/24/10) |
| FG Made (2021) | 6 (3 times) |
| FG Made (Career) | 15 (8/6/17) |
| FG Attempted (2021) | 16 (5/15) |
| FG Attempted (Career) | 26 (8/26/17) |
| FT Made (2021) | 2 (6 times) |
| FT Made (Career) | 11 (2 times) |
| FT Attempted (2021) | 3 (9/8) |
| FT Attempted (Career) | 13 (8/2/15) |
| 3PT FG Made (2021) | 1 (5/25) |
| 3PT FG Made (Career) | 3 (2 times) |
| 3PT FG Attempt. (2021) | 1 (4 times) |
| 3PT FG Att. (Career) | 5 (2 times) |
| Off. Rebounds (2021) | 3 (5/22) |
| Off. Rebounds (Career) | 8 (2 times) |
| Def. Rebounds (2021) | 8 (8/17) |
| Def. Rebounds (Career) | 17 (8/7/14) |
| Total Rebounds (2021) | 8 (2 times) |
| Total Rebounds (Career) | 20 (8/7/14) |
| Assists (2021) | 3 (2 times) |
| Assists (Career) | 7 (3 times) |
| Blocks (2021) | 2 (5/15) |
| Blocks (Career) | 4 (4 times) |
| Steals (2021) | 3 (8/17) |
| Steals (Career) | 5 (7/7/09) |
| Minutes (2021) | 36 (8/17) |
| Minutes (Career) | 52 (7/14/10) |
| Double-Doubles (2021) | NONE |
| Double-Doubles (Career) | 69 |



#21 TIANNA HAWKINS

F • 6-3 • 181 • 7 yrs • Maryland

Tianna Hawkins - tee-AWN-uh

2021 Highlights:

- » Scored in double-digits in her Dream debut against Connecticut (5/14), tallying 11 points and picking up two steals, a block and three assists.
- » Pulled down two defensive rebounds against Chicago (5/19).
- » Blocked a team-high two shots against Indiana (5/21).
- » Recorded a season-best two offensive rebounds against Seattle (6/9).
- » Second double-figure scoring game came against Washington, her former team, when she scored 10 points off two made three-pointers and pulled down a season-best 6 rebounds (6/13).
- » Saw another top performance of the season in Washington (6/17), where she scored a season-high 17 points with 9 total rebounds (2 offensive).

HAWKINS 2021 GAME-BY-GAME

| Date | Opp | GS | MP | FGM-A | 3PM-A | FTM-A | OREB | DREB | REB | AST | STL | BLK | TO | PF | PTS |
|------|-------|----|----|--------|-------|-------|--|------|-----|-----|-----|-----|----|----|-----|
| 5/14 | CON | * | 31 | 5 - 12 | 0 - 5 | 1 - 1 | 1 | 0 | 1 | 3 | 2 | 1 | 1 | 2 | 11 |
| 5/19 | CHI | * | 18 | 1 - 5 | 0 - 3 | 0 - 0 | 0 | 2 | 2 | 1 | 2 | 0 | 2 | 4 | 2 |
| 5/21 | @ IND | * | 16 | 0 - 5 | 0 - 2 | 0 - 0 | 0 | 2 | 2 | 2 | 0 | 2 | 0 | 1 | 0 |
| 5/25 | @ CHI | * | 16 | 2 - 3 | 0 - 0 | 0 - 0 | 1 | 4 | 5 | 1 | 0 | 0 | 0 | 3 | 4 |
| 5/27 | DAL | * | 20 | 1 - 4 | 0 - 2 | 2 - 2 | 0 | 5 | 5 | 0 | 1 | 0 | 2 | 2 | 4 |
| 5/29 | @ NYL | * | 20 | 1 - 3 | 0 - 2 | 0 - 0 | 1 | 3 | 4 | 0 | 1 | 1 | 3 | 1 | 2 |
| 6/4 | @ MIN | * | 17 | 2 - 4 | 1 - 3 | 0 - 0 | 0 | 4 | 4 | 1 | 0 | 0 | 1 | 3 | 5 |
| 6/6 | @ MIN | * | 10 | 0 - 0 | 0 - 0 | 0 - 0 | 1 | 0 | 1 | 0 | 0 | 0 | 0 | 0 | 0 |
| 6/9 | SEA | | 17 | 2 - 4 | 1 - 1 | 0 - 0 | 2 | 3 | 5 | 0 | 0 | 1 | 1 | 3 | 5 |
| 6/11 | SEA | | 18 | 2 - 4 | 1 - 2 | 0 - 0 | 1 | 3 | 4 | 0 | 1 | 0 | 0 | 3 | 5 |
| 6/13 | WAS | | 17 | 4 - 7 | 2 - 5 | 0 - 0 | 1 | 5 | 6 | 2 | 1 | 0 | 2 | 3 | 10 |
| 6/17 | @ WAS | | 27 | 6 - 10 | 1 - 3 | 4 - 4 | 2 | 7 | 9 | 1 | 0 | 1 | 0 | 1 | 17 |
| 6/23 | MIN | | 21 | 1 - 2 | 1 - 2 | 2 - 2 | 0 | 4 | 4 | 0 | 0 | 0 | 1 | 2 | 5 |
| 6/26 | NYL | | 14 | 1 - 1 | 1 - 1 | 4 - 4 | 0 | 2 | 2 | 0 | 0 | 0 | 3 | 3 | 7 |
| 6/29 | NYL | | 14 | 1 - 3 | 0 - 1 | 2 - 2 | 0 | 3 | 3 | 1 | 1 | 0 | 1 | 1 | 4 |
| 7/2 | @ SEA | | 17 | 4 - 7 | 2 - 4 | 0 - 0 | 0 | 2 | 2 | 1 | 0 | 2 | 1 | 2 | 10 |
| 7/4 | @ LVA | | 16 | 2 - 6 | 2 - 6 | 2 - 2 | 0 | 3 | 3 | 0 | 0 | 1 | 0 | 2 | 8 |
| 7/9 | @ CON | | 19 | 2 - 8 | 1 - 5 | 1 - 2 | 0 | 0 | 0 | 2 | 0 | 0 | 1 | 5 | 6 |
| 7/11 | IND | | 23 | 3 - 8 | 0 - 2 | 0 - 0 | 0 | 5 | 5 | 0 | 0 | 2 | 0 | 3 | 6 |
| 8/15 | @ PHO | | 13 | 2 - 5 | 1 - 3 | 0 - 0 | 1 | 4 | 5 | 1 | 0 | 2 | 2 | 2 | 5 |
| 8/17 | @ LAS | | 8 | 1 - 4 | 0 - 2 | 0 - 0 | 1 | 3 | 4 | 0 | 1 | 0 | 3 | 1 | 2 |
| 8/19 | @ LAS | | 8 | 0 - 2 | 0 - 1 | 0 - 0 | 0 | 0 | 0 | 0 | 0 | 0 | 3 | 2 | 0 |
| 8/21 | PHO | | 17 | 1 - 5 | 0 - 4 | 0 - 0 | 0 | 3 | 3 | 1 | 0 | 0 | 1 | 3 | 2 |
| 8/24 | CHI | | 16 | 3 - 6 | 2 - 3 | 1 - 2 | 2 | 2 | 4 | 0 | 1 | 0 | 2 | 4 | 9 |
| 8/26 | LVA | | 2 | 0 - 1 | 0 - 1 | 2 - 2 | 0 | 1 | 1 | 0 | 0 | 0 | 0 | 2 | 2 |
| 9/2 | @ DAL | | | | | | Did not play - Injury/Illness (Right Foot) | | | | | | | | |
| 9/5 | @ DAL | | | | | | Did not play - Injury/Illness (Right Foot) | | | | | | | | |
| 9/8 | PHO | | | | | | Did not play - Injury/Illness (Right Foot) | | | | | | | | |
| 9/10 | @ WAS | | | | | | Did not play - Injury/Illness (Right Foot) | | | | | | | | |
| 9/14 | IND | | | | | | | | | | | | | | |
| 9/16 | LAS | | | | | | | | | | | | | | |
| 9/19 | @ CON | | | | | | | | | | | | | | |

HAWKINS CAREER

| Season | Team | G | GS | MIN | FGM-A | 3PM-A | FTM-A | OR | DR | TOT | AST | STL | BS | TO | PF | PTS |
|--------|------|-----|----|------|------------|-----------|-----------|-----|-----|-----|-----|-----|----|-----|-----|------|
| 2013 | SEA | 33 | 0 | 321 | 48 - 91 | 5 - 21 | 11 - 13 | 17 | 35 | 52 | 6 | 9 | 4 | 22 | 59 | 112 |
| 2014 | WAS | 34 | 0 | 360 | 57 - 119 | 5 - 17 | 23 - 32 | 49 | 54 | 103 | 17 | 14 | 7 | 33 | 69 | 142 |
| 2016 | WAS | 24 | 0 | 252 | 42 - 85 | 11 - 22 | 18 - 21 | 24 | 35 | 59 | 10 | 5 | 4 | 23 | 52 | 113 |
| 2017 | WAS | 33 | 1 | 547 | 88 - 187 | 12 - 46 | 41 - 43 | 43 | 95 | 138 | 11 | 18 | 8 | 25 | 78 | 229 |
| 2018 | WAS | 32 | 4 | 532 | 81 - 183 | 25 - 70 | 14 - 17 | 36 | 77 | 113 | 24 | 16 | 12 | 36 | 79 | 201 |
| 2019 | WAS | 31 | 1 | 477 | 113 - 220 | 33 - 91 | 37 - 40 | 47 | 83 | 130 | 23 | 14 | 4 | 35 | 77 | 296 |
| 2020 | WAS | 17 | 5 | 329 | 53 - 130 | 17 - 57 | 22 - 26 | 12 | 48 | 60 | 17 | 14 | 6 | 20 | 44 | 145 |
| 2021 | ATL | 25 | 8 | 415 | 47 - 119 | 16 - 63 | 21 - 23 | 14 | 70 | 84 | 17 | 11 | 13 | 30 | 58 | 131 |
| Career | | 229 | 19 | 3233 | 529 - 1134 | 124 - 387 | 187 - 215 | 242 | 497 | 739 | 125 | 101 | 58 | 224 | 516 | 1369 |

SEASON/CAREER HIGHS

| | |
|-------------------------|--------------|
| Points (2021) | 17 (6/17) |
| Points (Career) | 24 (2 times) |
| FG Made (2021) | 6 (6/17) |
| FG Made (Career) | 11 (7/10/19) |
| FG Attempted (2021) | 12 (5/14) |
| FG Attempted (Career) | 17 (7/10/19) |
| FT Made (2021) | 4 (2 times) |
| FT Made (Career) | |
| FT Attempted (2021) | 4 (2 times) |
| FT Attempted (Career) | |
| 3PT FG Made (2021) | 2 (6/13) |
| 3PT FG Made (Career) | 4 (9/8/19) |
| 3PT FG Attempt. (2021) | 6 (7/4) |
| 3PT FG Att. (Career) | 7 (4 times) |
| Off. Rebounds (2021) | 2 (2 times) |
| Off. Rebounds (Career) | 4 (5 times) |
| Def. Rebounds (2021) | 7 (6/17) |
| Def. Rebounds (Career) | 9 (2 Times) |
| Total Rebounds (2021) | 9 (6/17) |
| Total Rebounds (Career) | 12 (5/30/18) |
| Assists (2021) | 3 (5/14) |
| Assists (Career) | 5 (8/25/19) |
| Blocks (2021) | 2 (4 times) |
| Blocks (Career) | 3 (6/13/18) |
| Steals (2021) | 2 (2 times) |
| Steals (Career) | 4 (6/29/17) |
| Minutes (2021) | 31 (5/14) |
| Minutes (Career) | 35 (5/29/18) |
| Double-Doubles (2021) | NONE |
| Double-Doubles (Career) | |



#15 TIFFANY HAYES

G • 5-10 • 155 • 8 yrs • UConn

2021 Highlights:

- » Returned for her first WNBA game since 2019, picking up 3 steals, 2 assists and 5 points against Chicago (5/19).
- » Recorded her 46th career 20-point game with 26 points at Chicago (5/25), the second-most in franchise history.
- » Recorded her 47th career 20-point game with 23 points and a season-high 8 rebounds at Minnesota (6/4), and her 48th two days later with 21 points at Minnesota again (6/6).
- » Third straight 20-point outing (49th career) with 22 points against Seattle (6/9).
- » Recorded a career-high 5 steals at Washington (6/17), the first Dream player since Renee Montgomery in 2018 to record at least 5 in a game.
- » 51st career 20-point game at Dallas (9/5) with 22 PTS, added 8 REB and 3 STL

HAYES 2021 GAME-BY-GAME

| Date | Opp | GS | MP | FGM-A | 3PM-A | FTM-A | OREB | DREB | REB | AST | STL | BLK | TO | PF | PTS |
|------|-------|----|----|---|-------|-------|------|------|-----|-----|-----|-----|----|----|-----|
| 5/14 | CON | | | Did not play - Injury/Illness (Health and Safety Protocols) | | | | | | | | | | | |
| 5/19 | CHI | * | 26 | 1 - 10 | 1 - 2 | 2 - 2 | 0 | 0 | 0 | 2 | 3 | 1 | 1 | 5 | 5 |
| 5/21 | @ IND | * | 25 | 3 - 8 | 1 - 3 | 7 - 8 | 1 | 2 | 3 | 2 | 2 | 0 | 2 | 5 | 14 |
| 5/25 | @ CHI | * | 34 | 8 - 16 | 3 - 5 | 7 - 9 | 2 | 2 | 4 | 2 | 3 | 0 | 1 | 3 | 26 |
| 5/27 | DAL | * | 36 | 11 - 16 | 2 - 2 | 2 - 3 | 0 | 1 | 1 | 3 | 0 | 0 | 0 | 3 | 26 |
| 5/29 | @ NYL | * | 34 | 5 - 18 | 1 - 6 | 1 - 1 | 1 | 3 | 4 | 6 | 0 | 0 | 1 | 5 | 12 |
| 6/4 | @ MIN | * | 32 | 8 - 17 | 2 - 7 | 5 - 6 | 0 | 8 | 8 | 1 | 1 | 0 | 6 | 3 | 23 |
| 6/6 | @ MIN | * | 22 | 7 - 12 | 4 - 5 | 3 - 4 | 0 | 1 | 1 | 0 | 1 | 0 | 3 | 5 | 21 |
| 6/9 | SEA | * | 26 | 9 - 15 | 2 - 6 | 2 - 4 | 2 | 1 | 3 | 4 | 2 | 0 | 0 | 4 | 22 |
| 6/11 | SEA | * | 34 | 3 - 12 | 0 - 1 | 5 - 5 | 0 | 2 | 2 | 4 | 0 | 0 | 0 | 0 | 11 |
| 6/13 | WAS | * | 34 | 5 - 12 | 3 - 7 | 5 - 7 | 0 | 2 | 2 | 6 | 0 | 0 | 2 | 4 | 18 |
| 6/17 | @ WAS | * | 33 | 5 - 8 | 3 - 5 | 3 - 3 | 0 | 1 | 1 | 6 | 5 | 0 | 2 | 2 | 16 |
| 6/23 | MIN | | | Did Not Play - Injury/Illness (Right ACL Tear) | | | | | | | | | | | |
| 6/26 | NYL | | | Did Not Play - Injury/Illness (Right ACL Tear) | | | | | | | | | | | |
| 6/29 | NYL | | | Did Not Play - Injury/Illness (Right ACL Tear) | | | | | | | | | | | |
| 7/2 | @ SEA | | | Did Not Play - Injury/Illness (Right ACL Tear) | | | | | | | | | | | |
| 7/4 | @ LVA | | | Did Not Play - Injury/Illness (Right ACL Tear) | | | | | | | | | | | |
| 7/9 | @ CON | | | Did Not Play - Injury/Illness (Right ACL Tear) | | | | | | | | | | | |
| 7/11 | IND | | | Did Not Play - Injury/Illness (Right ACL Tear) | | | | | | | | | | | |
| 8/15 | @ PHO | | | Did Not Play - Injury/Illness (Right ACL Tear) | | | | | | | | | | | |
| 8/17 | @ LAS | | | Did Not Play - Injury/Illness (Right ACL Tear) | | | | | | | | | | | |
| 8/19 | @ LAS | | 16 | 0 - 3 | 0 - 2 | 0 - 0 | 0 | 2 | 2 | 0 | 2 | 0 | 0 | 1 | 0 |
| 8/21 | PHO | | | Did Not Play - Injury/Illness (Right Knee) | | | | | | | | | | | |
| 8/24 | CHI | | 12 | 0 - 0 | 0 - 0 | 0 - 0 | 0 | 1 | 1 | 2 | 1 | 1 | 0 | 1 | 0 |
| 8/26 | LVA | | 30 | 3 - 10 | 2 - 4 | 3 - 4 | 1 | 7 | 8 | 3 | 2 | 0 | 1 | 3 | 11 |
| 9/2 | @ DAL | | 15 | 1 - 4 | 0 - 1 | 0 - 0 | 1 | 3 | 4 | 1 | 0 | 0 | 3 | 4 | 2 |
| 9/5 | @ DAL | | 36 | 8 - 16 | 1 - 2 | 5 - 5 | 2 | 6 | 8 | 4 | 3 | 0 | 3 | 1 | 22 |
| 9/8 | PHO | | 27 | 3 - 5 | 1 - 2 | 1 - 1 | 0 | 1 | 1 | 3 | 2 | 1 | 0 | 3 | 8 |
| 9/10 | @ WAS | | 33 | 5 - 15 | 1 - 7 | 2 - 2 | 0 | 3 | 3 | 6 | 4 | 0 | 1 | 2 | 13 |
| 9/14 | IND | | | | | | | | | | | | | | |
| 9/16 | LAS | | | | | | | | | | | | | | |
| 9/19 | @ CON | | | | | | | | | | | | | | |

HAYES CAREER

| Season | Team | G | GS | MIN | FGM-A | 3PM-A | FTM-A | OR | DR | TOT | AST | STL | BS | TO | PF | PTS |
|--------|------|-----|-----|------|-------------|-----------|------------|-----|-----|-----|-----|-----|----|-----|-----|------|
| 2012 | ATL | 34 | 17 | 787 | 90 - 231 | 21 - 77 | 92 - 117 | 24 | 81 | 105 | 73 | 28 | 12 | 51 | 89 | 293 |
| 2013 | ATL | 23 | 4 | 513 | 80 - 197 | 23 - 61 | 76 - 102 | 20 | 66 | 86 | 39 | 27 | 3 | 40 | 52 | 259 |
| 2014 | ATL | 34 | 32 | 966 | 143 - 308 | 40 - 112 | 111 - 146 | 31 | 70 | 101 | 86 | 34 | 9 | 40 | 83 | 437 |
| 2015 | ATL | 28 | 27 | 836 | 115 - 293 | 31 - 113 | 99 - 123 | 29 | 55 | 84 | 62 | 29 | 11 | 47 | 97 | 360 |
| 2016 | ATL | 33 | 33 | 1016 | 153 - 347 | 32 - 117 | 156 - 194 | 33 | 79 | 112 | 78 | 40 | 8 | 59 | 94 | 494 |
| 2017 | ATL | 33 | 33 | 989 | 166 - 381 | 48 - 129 | 158 - 185 | 31 | 96 | 127 | 80 | 41 | 8 | 62 | 102 | 538 |
| 2018 | ATL | 31 | 29 | 897 | 177 - 401 | 42 - 131 | 138 - 169 | 28 | 84 | 112 | 83 | 36 | 7 | 50 | 65 | 534 |
| 2019 | ATL | 29 | 29 | 817 | 147 - 374 | 36 - 117 | 97 - 127 | 21 | 66 | 87 | 82 | 29 | 8 | 70 | 71 | 427 |
| 2021 | ATL | 18 | 16 | 504 | 85 - 197 | 27 - 67 | 53 - 64 | 10 | 46 | 56 | 55 | 31 | 3 | 26 | 54 | 250 |
| Career | | 263 | 220 | 7322 | 1156 - 2729 | 300 - 924 | 980 - 1227 | 227 | 643 | 870 | 638 | 295 | 69 | 445 | 707 | 3592 |

SEASON/CAREER HIGHS

| | |
|-------------------------|----------------|
| Points (2021) | 26 (2 times) |
| Points (Career) | 34 (8/10/19) |
| FG Made (2021) | 11 (5/27) |
| FG Made (Career) | 12 (8/10/19) |
| FG Attempted (2021) | 18 (5/29) |
| FG Attempted (Career) | 24 (8/20/2019) |
| FT Made (2021) | 7 (2 times) |
| FT Made (Career) | |
| FT Attempted (2021) | 9 (5/25) |
| FT Attempted (Career) | |
| 3PT FG Made (2021) | 4 (6/6) |
| 3PT FG Made (Career) | 6 (8/5/2018) |
| 3PT FG Attempt. (2021) | 7 (2 times) |
| 3PT FG Att. (Career) | 11 (8/5/2018) |
| Off. Rebounds (2021) | 2 (3 times) |
| Off. Rebounds (Career) | 4 (7/13/2014) |
| Def. Rebounds (2021) | 8 (6/4) |
| Def. Rebounds (Career) | 9 (8/25/2015) |
| Total Rebounds (2021) | 8 (3 times) |
| Total Rebounds (Career) | 11 (5/24/2016) |
| Assists (2021) | 6 (3 times) |
| Assists (Career) | 8 (6/16/2013) |
| Blocks (2021) | 1 (2 times) |
| Blocks (Career) | 3 (7/16/2015) |
| Steals (2021) | 5 (6/17) |
| Steals (Career) | 5 (2 times) |
| Minutes (2021) | 36 (2 times) |
| Minutes (Career) | 46 (7/22/2014) |
| Double-Doubles (2021) | NONE |
| Double-Doubles (Career) | 1 |



#4 AARI McDONALD G • 5-6 • 141 • R • Arizona

Aari McDonald - AIR-ee

2021 Highlights:

- » Scored 9 points with one made three-pointer and a team-leading 5 assists against Chicago (5/25).
- » Breakout game at Minnesota (6/4) saw her score 15 points (first double-digit performance of the season) with four made three-pointers, the most of any Dream player this season.
- » Recorded 15 points two days later at Minnesota again (6/6), playing in a season-high 24 minutes and going 6-of-6 from the charity stripe.
- » Played a season-high 24 minutes at Connecticut (7/9), scoring 10 points and keeping her streak of free throws alive, going 4-of-4 from the line.
- » Recorded a season-high 4 steals and tied her season records with 4 rebounds and 5 assists against Phoenix (8/15), her first return to Arizona since leading the U of A Wildcats to the NCAA Finals in 2021.

McDONALD 2021 GAME-BY-GAME

| Date | Opp | GS | MP | FGM-A | 3PM-A | FTM-A | OREB | DREB | REB | AST | STL | BLK | TO | PF | PTS |
|------|-------|----|----|-------|-------|----------------------------------|------|------|-----|-----|-----|-----|----|----|-----|
| 5/14 | CON | | 16 | 0-4 | 0-2 | 1-2 | 0 | 2 | 2 | 1 | 2 | 0 | 0 | 3 | 1 |
| 5/19 | CHI | | 11 | 0-3 | 0-1 | 0-0 | 0 | 0 | 0 | 2 | 0 | 0 | 2 | 1 | 0 |
| 5/21 | @ IND | | | | | Did not play (Coaches' Decision) | | | | | | | | | |
| 5/25 | @ CHI | | 17 | 3-8 | 1-5 | 2-3 | 0 | 1 | 1 | 5 | 0 | 0 | 1 | 2 | 9 |
| 5/27 | DAL | | 10 | 2-4 | 1-2 | 4-4 | 1 | 3 | 4 | 2 | 1 | 0 | 1 | 0 | 9 |
| 5/29 | @ NYL | | 7 | 1-3 | 1-3 | 0-0 | 1 | 0 | 1 | 0 | 0 | 0 | 0 | 2 | 3 |
| 6/4 | @ MIN | | 23 | 5-12 | 4-9 | 1-1 | 0 | 1 | 1 | 3 | 2 | 1 | 1 | 2 | 15 |
| 6/6 | @ MIN | | 24 | 4-10 | 1-4 | 6-6 | 1 | 1 | 2 | 2 | 0 | 0 | 2 | 5 | 15 |
| 6/9 | SEA | | 14 | 1-5 | 0-1 | 5-5 | 0 | 0 | 0 | 1 | 0 | 0 | 3 | 0 | 7 |
| 6/11 | SEA | | 19 | 2-6 | 0-2 | 0-0 | 1 | 1 | 2 | 1 | 0 | 1 | 1 | 2 | 4 |
| 6/13 | WAS | | 6 | 1-3 | 0-0 | 1-1 | 0 | 0 | 0 | 1 | 0 | 1 | 0 | 0 | 3 |
| 6/17 | @ WAS | | 11 | 1-3 | 0-2 | 2-2 | 0 | 1 | 1 | 2 | 0 | 0 | 1 | 2 | 4 |
| 6/23 | MIN | | 7 | 2-4 | 2-3 | 4-4 | 0 | 1 | 1 | 1 | 1 | 0 | 0 | 1 | 10 |
| 6/26 | NYL | | 14 | 1-3 | 1-2 | 0-0 | 0 | 1 | 1 | 0 | 1 | 0 | 3 | 2 | 3 |
| 6/29 | NYL | | 2 | 0-1 | 0-0 | 0-0 | 0 | 0 | 0 | 0 | 1 | 0 | 0 | 0 | 0 |
| 7/2 | @ SEA | | | | | Did not play (Coaches' Decision) | | | | | | | | | |
| 7/4 | @ LVA | | 11 | 1-5 | 1-4 | 2-2 | 0 | 0 | 0 | 1 | 0 | 0 | 0 | 2 | 5 |
| 7/9 | @ CON | | 24 | 2-6 | 2-4 | 4-4 | 0 | 4 | 4 | 3 | 2 | 0 | 2 | 1 | 10 |
| 7/11 | IND | | 15 | 1-3 | 1-1 | 0-0 | 0 | 0 | 0 | 2 | 0 | 0 | 1 | 1 | 3 |
| 8/15 | @ PHO | | 21 | 2-7 | 0-2 | 1-2 | 1 | 3 | 4 | 5 | 4 | 0 | 1 | 4 | 5 |
| 8/17 | @ LAS | | 16 | 1-6 | 0-3 | 3-3 | 1 | 0 | 1 | 1 | 1 | 0 | 1 | 2 | 5 |
| 8/19 | @ LAS | | 19 | 5-10 | 4-8 | 1-2 | 2 | 2 | 4 | 3 | 1 | 0 | 2 | 4 | 15 |
| 8/21 | PHO | | 19 | 5-9 | 3-6 | 0-0 | 0 | 0 | 0 | 2 | 3 | 0 | 2 | 5 | 13 |
| 8/24 | CHI | | 10 | 2-5 | 2-5 | 2-2 | 0 | 0 | 0 | 0 | 0 | 0 | 0 | 1 | 8 |
| 8/26 | LVA | | 16 | 3-6 | 1-2 | 2-2 | 0 | 3 | 3 | 4 | 1 | 0 | 1 | 1 | 9 |
| 9/2 | @ DAL | | 21 | 2-8 | 2-6 | 0-0 | 0 | 4 | 4 | 1 | 0 | 1 | 2 | 1 | 6 |
| 9/5 | @ DAL | | 13 | 0-3 | 0-1 | 0-0 | 0 | 1 | 1 | 2 | 0 | 0 | 0 | 0 | 0 |
| 9/8 | PHO | | 11 | 0-3 | 0-3 | 0-0 | 0 | 1 | 1 | 1 | 1 | 0 | 0 | 1 | 0 |
| 9/10 | @ WAS | * | 33 | 3-12 | 3-9 | 2-2 | 0 | 5 | 5 | 2 | 0 | 0 | 1 | 3 | 11 |
| 9/14 | IND | | | | | | | | | | | | | | |
| 9/16 | LAS | | | | | | | | | | | | | | |
| 9/19 | @ CON | | | | | | | | | | | | | | |

SEASON/CAREER HIGHS

| | |
|-------------------------|--------------|
| Points (2021) | 15 (2 times) |
| Points (Career) | 15 (2 times) |
| FG Made (2021) | 5 (3 times) |
| FG Made (Career) | 5 (3 times) |
| FG Attempted (2021) | 12 (6/4) |
| FG Attempted (Career) | 12 (6/4) |
| FT Made (2021) | 6 (6/6) |
| FT Made (Career) | 6 (6/6) |
| FT Attempted (2021) | 6 (6/6) |
| FT Attempted (Career) | 6 (6/6) |
| 3PT FG Made (2021) | 4 (6/4) |
| 3PT FG Made (Career) | 4 (6/4) |
| 3PT FG Attempt. (2021) | 9 (6/4) |
| 3PT FG Att. (Career) | 9 (6/4) |
| Off. Rebounds (2021) | 1 (4 times) |
| Off. Rebounds (Career) | 1 (4 times) |
| Def. Rebounds (2021) | 5 (9/10) |
| Def. Rebounds (Career) | 5 (9/10/21) |
| Total Rebounds (2021) | 5 (9/10) |
| Total Rebounds (Career) | 5 (9/10/21) |
| Assists (2021) | 5 (2 times) |
| Assists (Career) | 5 (2 times) |
| Blocks (2021) | 1 (4 times) |
| Blocks (Career) | 1 (4 times) |
| Steals (2021) | 4 (8/15) |
| Steals (Career) | 4 (8/15/21) |
| Minutes (2021) | 33 (9/10) |
| Minutes (Career) | 33 (9/10/21) |
| Double-Doubles (2021) | NONE |
| Double-Doubles (Career) | NONE |

McDONALD CAREER

| Season | Team | G | GS | MIN | FGM-A | 3PM-A | FTM-A | OR | DR | TOT | AST | STL | BS | TO | PF | PTS |
|--------|------|----|----|-----|----------|---------|---------|----|----|-----|-----|-----|----|----|----|-----|
| 2021 | ATL | 27 | 1 | 411 | 50 - 152 | 30 - 90 | 43 - 47 | 8 | 35 | 43 | 48 | 21 | 4 | 28 | 48 | 173 |
| Career | | 27 | 1 | 411 | 50 - 152 | 30 - 90 | 43 - 47 | 8 | 35 | 43 | 48 | 21 | 4 | 28 | 48 | 173 |



#32 CHEYENNE PARKER

F • 6-4 • 198 • 6 yrs • Middle Tennessee

2021 Highlights:

- » Played her first game for the Dream at Minnesota (6/4), playing for 14 minutes and recording three assists, a defensive rebound and a steal.
- » First double-figure scoring outing came in her second game back, when she put up 12 points with 2 made three pointers and pulled down 3 defensive rebounds at Minnesota (6/6/).
- » Played a season-high 27 minutes against Seattle in her second start of the season, scoring 17 points with 4 rebounds (2 offensive), recording a block for the third-straight game.
- » Recorded 5 steals against Minnesota (6/23), the second player to record five in a game this season after Tiffany Hayes did it against Washington (6/17). Hayes was the first Dream player to do it since 2018.
- » Season-high 18 points off 7 made free throws at Las Vegas (7/4), going 3-for-3 from the charity stripe and pulling down 7 rebounds.
- » Led the team with 15 points and 6 rebounds at Connecticut (7/9).

PARKER 2021 GAME-BY-GAME

| Date | Opp | GS | MP | FGM-A | 3PM-A | FTM-A | OREB | DREB | REB | AST | STL | BLK | TO | PF | PTS |
|------|-------|----|----|---|-------|-------|------|------|-----|-----|-----|-----|----|----|-----|
| 5/14 | CON | | | Did not play - Injury/Illness (Health and Safety Protocols) | | | | | | | | | | | |
| 5/19 | CHI | | | Did not play - Injury/Illness (Health and Safety Protocols) | | | | | | | | | | | |
| 5/21 | @ IND | | | Did not play - Injury/Illness (Health and Safety Protocols) | | | | | | | | | | | |
| 5/25 | @ CHI | | | Did not play - Injury/Illness (Health and Safety Protocols) | | | | | | | | | | | |
| 5/27 | DAL | | | Did not play - Injury/Illness (Health and Safety Protocols) | | | | | | | | | | | |
| 5/29 | @ NYL | | | Did not play - Injury/Illness (Health and Safety Protocols) | | | | | | | | | | | |
| 6/4 | @ MIN | | 14 | 0 - 2 | 0 - 1 | 1 - 2 | 0 | 1 | 1 | 3 | 1 | 0 | 3 | 0 | 1 |
| 6/6 | @ MIN | | 20 | 4 - 6 | 2 - 3 | 2 - 3 | 0 | 3 | 3 | 0 | 1 | 1 | 2 | 3 | 12 |
| 6/9 | SEA | * | 18 | 3 - 10 | 0 - 3 | 0 - 0 | 0 | 6 | 6 | 0 | 0 | 1 | 2 | 4 | 6 |
| 6/11 | SEA | * | 27 | 5 - 10 | 1 - 2 | 6 - 6 | 2 | 2 | 4 | 0 | 0 | 1 | 2 | 2 | 17 |
| 6/13 | WAS | * | 22 | 4 - 8 | 2 - 4 | 1 - 1 | 2 | 4 | 6 | 0 | 0 | 0 | 2 | 1 | 11 |
| 6/17 | @ WAS | * | 14 | 4 - 6 | 0 - 1 | 2 - 3 | 0 | 3 | 3 | 1 | 0 | 2 | 1 | 2 | 10 |
| 6/23 | MIN | * | 28 | 3 - 10 | 0 - 2 | 0 - 0 | 3 | 4 | 7 | 5 | 5 | 2 | 1 | 4 | 6 |
| 6/26 | NYL | * | 18 | 5 - 10 | 0 - 3 | 4 - 5 | 1 | 3 | 4 | 1 | 1 | 1 | 0 | 2 | 14 |
| 6/29 | NYL | * | 24 | 4 - 8 | 1 - 3 | 2 - 2 | 0 | 1 | 1 | 2 | 3 | 0 | 1 | 3 | 11 |
| 7/2 | @ SEA | * | 24 | 3 - 5 | 0 - 0 | 0 - 0 | 0 | 6 | 6 | 2 | 0 | 1 | 1 | 3 | 6 |
| 7/4 | @ LVA | * | 22 | 7 - 13 | 3 - 3 | 1 - 2 | 2 | 5 | 7 | 0 | 2 | 1 | 0 | 2 | 18 |
| 7/9 | @ CON | * | 23 | 6 - 14 | 1 - 2 | 2 - 2 | 1 | 5 | 6 | 1 | 1 | 1 | 1 | 1 | 15 |
| 7/11 | IND | * | 16 | 2 - 9 | 0 - 3 | 1 - 2 | 2 | 2 | 4 | 1 | 1 | 1 | 0 | 1 | 5 |
| 8/15 | @ PHO | | | Did not play - Personal (Pregnancy) | | | | | | | | | | | |
| 8/17 | @ LAS | | | Did not play - Personal (Pregnancy) | | | | | | | | | | | |
| 8/19 | @ LAS | | | Did not play - Personal (Pregnancy) | | | | | | | | | | | |
| 8/21 | PHO | | | Did not play - Inactive - Personal (Pregnancy) | | | | | | | | | | | |
| 8/24 | CHI | | | Did not play - Inactive - Personal (Pregnancy) | | | | | | | | | | | |
| 8/26 | LVA | | | Did not play - Inactive - Personal (Pregnancy) | | | | | | | | | | | |
| 9/2 | @ DAL | | | Did not play - Inactive - Personal (Pregnancy) | | | | | | | | | | | |
| 9/5 | @ DAL | | | Did not play - Inactive - Personal (Pregnancy) | | | | | | | | | | | |
| 9/8 | PHO | | | Did not play - Inactive - Personal (Pregnancy) | | | | | | | | | | | |
| 9/10 | @ WAS | | | Did not play - Inactive - Personal (Pregnancy) | | | | | | | | | | | |
| 9/14 | IND | | | | | | | | | | | | | | |
| 9/16 | LAS | | | | | | | | | | | | | | |
| 9/19 | @ CON | | | | | | | | | | | | | | |

SEASON/CAREER HIGHS

| | |
|-------------------------|---------------|
| Points (2021) | 18 (7/4) |
| Points (Career) | 24 (9/6/2020) |
| FG Made (2021) | 7 (7/4) |
| FG Made (Career) | 10 (9/6/2020) |
| FG Attempted (2021) | 14 (7/9) |
| FG Attempted (Career) | 17 (9/6/2020) |
| FT Made (2021) | 6 (6/11) |
| FT Made (Career) | |
| FT Attempted (2021) | 6 (6/11) |
| FT Attempted (Career) | |
| 3PT FG Made (2021) | 2 (6/6) |
| 3PT FG Made (Career) | 3 (9/11/2020) |
| 3PT FG Attempt. (2021) | 4 (6/13) |
| 3PT FG Att. (Career) | 4 (2 times) |
| Off. Rebounds (2021) | 2 (2 times) |
| Off. Rebounds (Career) | 6 (6/9/2019) |
| Def. Rebounds (2021) | 6 (2 times) |
| Def. Rebounds (Career) | 10 (2 times) |
| Total Rebounds (2021) | 7 (2 times) |
| Total Rebounds (Career) | 15 (9/2/2020) |
| Assists (2021) | 5 (6/23) |
| Assists (Career) | 5 (6/23/21) |
| Blocks (2021) | 2 (2 times) |
| Blocks (Career) | 6 (8/27/2019) |
| Steals (2021) | 5 (6/23) |
| Steals (Career) | 5 (6/23/21) |
| Minutes (2021) | 28 (6/23) |
| Minutes (Career) | 31 (2 Times) |

PARKER CAREER

| Season | Team | G | GS | MIN | FGM-A | 3PM-A | FTM-A | OR | DR | TOT | AST | STL | BS | TO | PF | PTS |
|--------|------|-----|----|------|-----------|----------|-----------|-----|-----|-----|-----|-----|-----|-----|-----|------|
| 2015 | CHI | 30 | 0 | 279 | 28 - 70 | 0 - 0 | 10 - 26 | 30 | 44 | 74 | 6 | 7 | 22 | 16 | 40 | 66 |
| 2016 | CHI | 25 | 7 | 315 | 42 - 83 | 0 - 1 | 17 - 32 | 35 | 46 | 81 | 6 | 12 | 5 | 19 | 42 | 101 |
| 2017 | CHI | 23 | 0 | 286 | 32 - 69 | 0 - 3 | 23 - 36 | 31 | 47 | 78 | 13 | 8 | 15 | 21 | 38 | 87 |
| 2018 | CHI | 34 | 5 | 671 | 128 - 241 | 6 - 19 | 77 - 108 | 60 | 136 | 196 | 23 | 19 | 36 | 48 | 94 | 339 |
| 2019 | CHI | 34 | 0 | 670 | 107 - 233 | 5 - 18 | 80 - 95 | 62 | 135 | 197 | 30 | 25 | 42 | 45 | 81 | 299 |
| 2020 | CHI | 20 | 13 | 498 | 97 - 175 | 15 - 32 | 59 - 69 | 47 | 81 | 128 | 30 | 26 | 18 | 55 | 63 | 268 |
| 2021 | ATL | 13 | 11 | 270 | 50 - 111 | 10 - 30 | 22 - 28 | 13 | 45 | 58 | 16 | 15 | 12 | 16 | 28 | 132 |
| Career | | 179 | 36 | 2989 | 484 - 982 | 36 - 103 | 288 - 394 | 278 | 534 | 812 | 124 | 112 | 150 | 220 | 386 | 1292 |

| | |
|-------------------------|--|
| Double-Doubles (2021) | |
| Double-Doubles (Career) | |



#0 ODYSSEY SIMS

G • 5-8 • 150 • 7 yrs • Baylor

2021 Highlights:

- » Led the team with 14 points in her Dream debut against Connecticut (5/14), adding on four rebounds, two assists and a steal.
- » Season-high five rebounds (three offensive) and four steals against Seattle (6/9).
- » Scored 20 points with 5 total rebounds, 4 steals and 4 assists against Washington (6/13).
- » Topped that performance at Washington (6/17), scoring 22 points on 4 made three-pointers with 7 assists.
- » Set a WNBA record with 13 assists off the bench at Las Vegas (7/4), recording her third career double-double and first of the season with 10 points.
- » Season-high 26 points on a career-high 27 attempted field goals with 4 made three-pointers at Los Angeles (8/17), adding on 6 assists and 3 rebounds in a season-high 39 minutes (OT).

SIMS 2021 GAME-BY-GAME

| Date | Opp | GS | MP | FGM-A | 3PM-A | FTM-A | OREB | DREB | REB | AST | STL | BLK | TO | PF | PTS |
|------|-------|----|----|---------|-------|-------|------|------|-----|-----|-----|-----|----|----|-----|
| 5/14 | CON | * | 27 | 5 - 10 | 1 - 2 | 3 - 4 | 1 | 3 | 4 | 2 | 1 | 0 | 3 | 0 | 14 |
| 5/19 | CHI | | 17 | 1 - 6 | 0 - 2 | 1 - 2 | 1 | 2 | 3 | 1 | 2 | 0 | 2 | 2 | 3 |
| 5/21 | @ IND | | 27 | 3 - 7 | 0 - 1 | 0 - 0 | 0 | 1 | 1 | 2 | 0 | 0 | 0 | 0 | 6 |
| 5/25 | @ CHI | | 11 | 0 - 4 | 0 - 1 | 0 - 0 | 1 | 0 | 1 | 0 | 0 | 0 | 0 | 1 | 0 |
| 5/27 | DAL | | 9 | 3 - 4 | 1 - 1 | 0 - 0 | 1 | 3 | 4 | 2 | 0 | 0 | 4 | 1 | 7 |
| 5/29 | @ NYL | | 33 | 3 - 6 | 0 - 1 | 0 - 0 | 0 | 2 | 2 | 4 | 2 | 1 | 0 | 2 | 6 |
| 6/4 | @ MIN | * | 20 | 4 - 8 | 1 - 2 | 0 - 2 | 0 | 1 | 1 | 6 | 1 | 0 | 1 | 5 | 9 |
| 6/6 | @ MIN | * | 19 | 0 - 5 | 0 - 1 | 0 - 0 | 1 | 2 | 3 | 3 | 2 | 0 | 1 | 0 | 0 |
| 6/9 | SEA | * | 30 | 4 - 17 | 0 - 6 | 0 - 0 | 3 | 2 | 5 | 5 | 4 | 0 | 0 | 1 | 8 |
| 6/11 | SEA | * | 21 | 1 - 7 | 0 - 2 | 2 - 2 | 0 | 0 | 0 | 4 | 1 | 0 | 0 | 1 | 4 |
| 6/13 | WAS | * | 36 | 8 - 14 | 1 - 3 | 3 - 3 | 1 | 4 | 5 | 4 | 4 | 0 | 2 | 2 | 20 |
| 6/17 | @ WAS | * | 34 | 7 - 13 | 4 - 6 | 4 - 6 | 1 | 3 | 4 | 7 | 3 | 0 | 4 | 1 | 22 |
| 6/23 | MIN | * | 36 | 5 - 14 | 1 - 4 | 2 - 2 | 0 | 2 | 2 | 2 | 1 | 0 | 2 | 2 | 13 |
| 6/26 | NYL | * | 19 | 0 - 2 | 0 - 1 | 0 - 0 | 0 | 0 | 0 | 4 | 0 | 0 | 0 | 0 | 0 |
| 6/29 | NYL | * | 23 | 3 - 8 | 1 - 2 | 0 - 0 | 1 | 2 | 3 | 2 | 1 | 0 | 3 | 1 | 7 |
| 7/2 | @ SEA | | 22 | 2 - 7 | 0 - 2 | 0 - 0 | 0 | 2 | 2 | 4 | 3 | 0 | 1 | 1 | 4 |
| 7/4 | @ LVA | | 31 | 4 - 10 | 0 - 0 | 2 - 2 | 0 | 1 | 1 | 13 | 1 | 0 | 1 | 3 | 10 |
| 7/9 | @ CON | * | 26 | 2 - 7 | 0 - 2 | 0 - 0 | 1 | 5 | 6 | 3 | 0 | 0 | 3 | 3 | 4 |
| 7/11 | IND | * | 32 | 7 - 14 | 0 - 1 | 6 - 7 | 0 | 1 | 1 | 3 | 2 | 1 | 3 | 2 | 20 |
| 8/15 | @ PHO | * | 21 | 4 - 10 | 0 - 4 | 0 - 0 | 0 | 4 | 4 | 5 | 0 | 0 | 2 | 3 | 8 |
| 8/17 | @ LAS | * | 39 | 10 - 27 | 4 - 8 | 2 - 5 | 1 | 2 | 3 | 6 | 0 | 0 | 2 | 1 | 26 |
| 8/19 | @ LAS | * | 21 | 0 - 6 | 0 - 2 | 1 - 2 | 1 | 1 | 2 | 3 | 0 | 0 | 4 | 1 | 1 |
| 8/21 | PHO | * | 35 | 7 - 14 | 0 - 2 | 2 - 2 | 0 | 1 | 1 | 3 | 1 | 0 | 1 | 0 | 16 |
| 8/24 | CHI | * | 30 | 8 - 21 | 0 - 4 | 1 - 1 | 1 | 5 | 6 | 5 | 2 | 0 | 1 | 0 | 17 |
| 8/26 | LVA | * | 27 | 3 - 8 | 1 - 1 | 0 - 0 | 0 | 3 | 3 | 1 | 1 | 0 | 1 | 1 | 7 |
| 9/2 | @ DAL | * | 19 | 2 - 8 | 0 - 1 | 0 - 0 | 0 | 1 | 1 | 3 | 1 | 0 | 1 | 1 | 4 |
| 9/5 | @ DAL | * | 27 | 2 - 8 | 0 - 1 | 2 - 4 | 0 | 3 | 3 | 3 | 1 | 0 | 1 | 1 | 6 |
| 9/8 | PHO | * | 28 | 3 - 11 | 0 - 3 | 2 - 2 | 0 | 2 | 2 | 3 | 3 | 0 | 3 | 4 | 8 |
| 9/10 | @ WAS | | | | | | | | | | | | | | |
| 9/14 | IND | | | | | | | | | | | | | | |
| 9/16 | LAS | | | | | | | | | | | | | | |
| 9/19 | @ CON | | | | | | | | | | | | | | |

Did not play - Personal

SEASON/CAREER HIGHS

| | |
|-------------------------|----------------|
| Points (2021) | 26 (8/17) |
| Points (Career) | 39 (7/22/2014) |
| FG Made (2021) | 10 (8/17) |
| FG Made (Career) | 15 (7/22/2014) |
| FG Attempted (2021) | 27 (8/17) |
| FG Attempted (Career) | 27 (2 times) |
| FT Made (2021) | 6 (7/11) |
| FT Made (Career) | |
| FT Attempted (2021) | 7 (7/11) |
| FT Attempted (Career) | |
| 3PT FG Made (2021) | 4 (2 times) |
| 3PT FG Made (Career) | 5 (2 times) |
| 3PT FG Attempt. (2021) | 8 (8/17) |
| 3PT FG Att. (Career) | 12 (8/16/2014) |
| Off. Rebounds (2021) | 3 (6/9) |
| Off. Rebounds (Career) | 3 (6 times) |
| Def. Rebounds (2021) | 4 (6/13) |
| Def. Rebounds (Career) | 7 (2 times) |
| Total Rebounds (2021) | 6 (8/24) |
| Total Rebounds (Career) | 7 (7 times) |
| Assists (2021) | 13 (7/4) |
| Assists (Career) | 13 (7/4/21) |
| Blocks (2021) | 1 (2 times) |
| Blocks (Career) | 2 (3 times) |
| Steals (2021) | 4 (2 times) |
| Steals (Career) | 5 (2 times) |
| Minutes (2021) | 39 (8/17) |
| Minutes (Career) | 47 (6/18/2016) |
| Double-Doubles (2021) | 1 |
| Double-Doubles (Career) | 3 |

SIMS CAREER

| Season | Team | G | GS | MIN | FGM-A | 3PM-A | FTM-A | OR | DR | TOT | AST | STL | BS | TO | PF | PTS |
|--------|------|-----|-----|------|-------------|-----------|-----------|-----|-----|-----|-----|-----|----|-----|-----|------|
| 2014 | TUL | 34 | 31 | 1169 | 201 - 495 | 47 - 136 | 120 - 143 | 28 | 68 | 96 | 142 | 44 | 10 | 70 | 87 | 569 |
| 2015 | TUL | 23 | 19 | 723 | 114 - 309 | 18 - 87 | 122 - 144 | 16 | 62 | 78 | 88 | 25 | 1 | 64 | 55 | 368 |
| 2016 | DAL | 34 | 30 | 1074 | 153 - 433 | 42 - 150 | 128 - 145 | 20 | 66 | 86 | 131 | 37 | 7 | 86 | 78 | 476 |
| 2017 | LAS | 31 | 14 | 752 | 113 - 253 | 11 - 58 | 62 - 70 | 14 | 45 | 59 | 108 | 45 | 5 | 44 | 60 | 299 |
| 2018 | LAS | 34 | 24 | 867 | 104 - 268 | 15 - 55 | 57 - 79 | 14 | 70 | 84 | 95 | 20 | 1 | 52 | 56 | 280 |
| 2019 | MIN | 34 | 34 | 1083 | 189 - 455 | 25 - 93 | 89 - 112 | 24 | 90 | 114 | 185 | 46 | 4 | 112 | 68 | 492 |
| 2020 | MIN | 13 | 7 | 240 | 42 - 104 | 8 - 24 | 30 - 33 | 8 | 18 | 26 | 45 | 7 | 1 | 25 | 22 | 122 |
| 2021 | ATL | 28 | 21 | 719 | 101 - 276 | 15 - 66 | 33 - 46 | 15 | 58 | 73 | 103 | 37 | 2 | 46 | 40 | 250 |
| Career | | 231 | 180 | 6627 | 1017 - 2593 | 181 - 669 | 641 - 772 | 139 | 477 | 616 | 897 | 261 | 31 | 499 | 466 | 2856 |



#40 SHEKINNA STRICKLEN

F • 6-2 • 229 • 9 yrs • Tennessee

Shekinna Stricklen – sheh-KEE-nuh

2021 Highlights:

- » Checked in for the Dream's opening game against Connecticut (5/14).
- » Knocked down 3 three-pointers on four attempts in only five minutes of play at Indiana (5/21) for a season-best 9 points.
- » Played a season-high 13 minutes at Minnesota (6/6), pulling down three rebounds (1 offensive) and handing out 2 assists.
- » Played 18 minutes and scored 7 points at Connecticut (7/9), making two three-pointers and dishing out two assists.
- » Picked up a season-best 3 steals against Indiana (7/11).
- » Tied season-high record of 9 points against Las Vegas (8/26).

STRICKLEN 2021 GAME-BY-GAME

| Date | Opp | GS | MP | FGM-A | 3PM-A | FTM-A | OREB | DREB | REB | AST | STL | BLK | TO | PF | PTS |
|------|-------|----|----|--------|--------------------------------------|-------|------|------|-----|-----|-----|-----|----|----|-----|
| 5/14 | CON | | 12 | 0 - 3 | 0 - 3 | 0 - 0 | 0 | 0 | 0 | 0 | 0 | 0 | 0 | 3 | 0 |
| 5/19 | CHI | | | | Did not play - Injury/Illness (Knee) | | | | | | | | | | |
| 5/21 | @ IND | 5 | | 3 - 4 | 3 - 4 | 0 - 0 | 0 | 0 | 0 | 0 | 0 | 0 | 0 | 2 | 9 |
| 5/25 | @ CHI | | | | Did not play - Injury/Illness (Knee) | | | | | | | | | | |
| 5/27 | DAL | 7 | | 0 - 3 | 0 - 3 | 0 - 0 | 0 | 0 | 0 | 0 | 1 | 0 | 0 | 1 | 0 |
| 5/29 | @ NYL | | | | Did not play (Coaches' Decision) | | | | | | | | | | |
| 6/4 | @ MIN | | | | Did not play (Coaches' Decision) | | | | | | | | | | |
| 6/6 | @ MIN | 13 | | 0 - 3 | 0 - 2 | 0 - 0 | 1 | 2 | 3 | 2 | 0 | 0 | 0 | 1 | 0 |
| 6/9 | SEA | 5 | | 0 - 3 | 0 - 3 | 0 - 0 | 0 | 0 | 0 | 0 | 1 | 0 | 0 | 0 | 0 |
| 6/11 | SEA | 10 | | 0 - 3 | 0 - 3 | 0 - 0 | 0 | 1 | 1 | 0 | 0 | 0 | 0 | 1 | 0 |
| 6/13 | WAS | 4 | | 0 - 0 | 0 - 0 | 0 - 0 | 0 | 0 | 0 | 0 | 0 | 0 | 0 | 0 | 0 |
| 6/17 | @ WAS | | | | Did not play (Coaches' Decision) | | | | | | | | | | |
| 6/23 | MIN | | | | Did not play (Coaches' Decision) | | | | | | | | | | |
| 6/26 | NYL | 7 | | 0 - 2 | 0 - 2 | 0 - 0 | 0 | 0 | 0 | 1 | 1 | 0 | 0 | 2 | 0 |
| 6/29 | NYL | 5 | | 0 - 2 | 0 - 2 | 0 - 0 | 0 | 1 | 1 | 1 | 0 | 1 | 1 | 1 | 0 |
| 7/2 | @ SEA | 11 | | 1 - 3 | 1 - 3 | 1 - 2 | 0 | 0 | 0 | 1 | 1 | 0 | 1 | 1 | 4 |
| 7/4 | @ LVA | 9 | | 2 - 4 | 0 - 0 | 0 - 0 | 1 | 0 | 1 | 0 | 0 | 0 | 0 | 1 | 4 |
| 7/9 | @ CON | 18 | | 2 - 6 | 2 - 5 | 1 - 3 | 0 | 1 | 1 | 2 | 1 | 0 | 0 | 1 | 7 |
| 7/11 | IND | 15 | | 1 - 5 | 0 - 3 | 0 - 0 | 0 | 2 | 2 | 0 | 3 | 0 | 0 | 0 | 2 |
| 8/15 | @ PHO | 13 | | 2 - 4 | 1 - 3 | 0 - 0 | 0 | 0 | 0 | 0 | 0 | 1 | 0 | 1 | 5 |
| 8/17 | @ LAS | 10 | | 1 - 4 | 0 - 2 | 0 - 0 | 0 | 1 | 1 | 0 | 1 | 0 | 0 | 2 | 2 |
| 8/19 | @ LAS | 5 | | 0 - 0 | 0 - 0 | 0 - 0 | 0 | 0 | 0 | 0 | 1 | 0 | 0 | 0 | 0 |
| 8/21 | PHO | 9 | | 0 - 2 | 0 - 2 | 0 - 0 | 0 | 1 | 1 | 0 | 0 | 0 | 0 | 1 | 0 |
| 8/24 | CHI | 9 | | 0 - 2 | 0 - 2 | 0 - 0 | 0 | 1 | 1 | 0 | 0 | 0 | 0 | 1 | 0 |
| 8/26 | LVA | 16 | | 3 - 12 | 3 - 10 | 0 - 0 | 0 | 1 | 1 | 0 | 0 | 1 | 0 | 2 | 9 |
| 9/2 | @ DAL | 19 | | 4 - 8 | 2 - 6 | 0 - 0 | 0 | 1 | 1 | 1 | 0 | 1 | 0 | 3 | 10 |
| 9/5 | @ DAL | 10 | | 1 - 3 | 0 - 2 | 0 - 0 | 0 | 1 | 1 | 0 | 0 | 0 | 0 | 2 | 2 |
| 9/8 | PHO | 2 | | 0 - 0 | 0 - 0 | 0 - 0 | 0 | 0 | 0 | 0 | 0 | 0 | 0 | 0 | 0 |
| 9/10 | @ WAS | 12 | | 1 - 4 | 1 - 2 | 0 - 0 | 0 | 2 | 2 | 0 | 0 | 0 | 0 | 1 | 3 |
| 9/14 | IND | | | | | | | | | | | | | | |
| 9/16 | LAS | | | | | | | | | | | | | | |
| 9/19 | @ CON | | | | | | | | | | | | | | |

SEASON/CAREER HIGHS

| | |
|-------------------------|--------------|
| Points (2021) | 10 (9/2) |
| Points (Career) | 26 (9/12/13) |
| FG Made (2021) | 4 (9/2) |
| FG Made (Career) | 10 (2 times) |
| FG Attempted (2021) | 12 (8/26) |
| FG Attempted (Career) | 17 (8/4/13) |
| FT Made (2021) | NONE |
| FT Made (Career) | 6 (8/9/15) |
| FT Attempted (2021) | NONE |
| FT Attempted (Career) | 6 (3 times) |
| 3PT FG Made (2021) | 3 (2 times) |
| 3PT FG Made (Career) | 8 (7/22/18) |
| 3PT FG Attempt. (2021) | 10 (8/26) |
| 3PT FG Att. (Career) | 13 (8/16/19) |
| Off. Rebounds (2021) | 1 (2 times) |
| Off. Rebounds (Career) | 4 (3 times) |
| Def. Rebounds (2021) | 2 (3 times) |
| Def. Rebounds (Career) | 8 (3 times) |
| Total Rebounds (2021) | 3 (6/6) |
| Total Rebounds (Career) | 11 (7/13/12) |
| Assists (2021) | 2 (2 times) |
| Assists (Career) | 6 (7/30/19) |
| Blocks (2021) | 1 (4 times) |
| Blocks (Career) | 3 (8/9/13) |
| Steals (2021) | 3 (7/11) |
| Steals (Career) | 5 (8/8/17) |
| Minutes (2021) | 18 (7/9) |
| Minutes (Career) | 37 (2 times) |
| Double-Doubles (2021) | NONE |
| Double-Doubles (Career) | 1 (7/13/12) |

STRICKLEN CAREER

| Season | Team | G | GS | MIN | FGM-A | 3PM-A | FTM-A | OR | DR | TOT | AST | STL | BS | TO | PF | PTS |
|--------|------|-----|-----|------|------------|------------|-----------|-----|-----|-----|-----|-----|----|-----|-----|------|
| 2012 | SEA | 34 | 3 | 784 | 100 - 253 | 37 - 117 | 36 - 52 | 28 | 119 | 147 | 40 | 24 | 8 | 35 | 70 | 273 |
| 2013 | SEA | 34 | 21 | 797 | 131 - 319 | 54 - 157 | 25 - 39 | 28 | 68 | 96 | 28 | 25 | 13 | 40 | 54 | 341 |
| 2014 | SEA | 33 | 10 | 578 | 86 - 200 | 47 - 122 | 19 - 26 | 9 | 60 | 69 | 23 | 20 | 3 | 27 | 65 | 238 |
| 2015 | CON | 34 | 0 | 599 | 95 - 231 | 51 - 142 | 22 - 28 | 25 | 38 | 63 | 22 | 19 | 8 | 20 | 46 | 263 |
| 2016 | CON | 28 | 0 | 306 | 38 - 104 | 27 - 77 | 9 - 14 | 9 | 29 | 38 | 15 | 12 | 2 | 3 | 20 | 112 |
| 2017 | CON | 34 | 29 | 926 | 95 - 232 | 71 - 173 | 32 - 37 | 17 | 90 | 107 | 37 | 42 | 4 | 29 | 56 | 293 |
| 2018 | CON | 34 | 30 | 639 | 77 - 179 | 58 - 135 | 12 - 14 | 9 | 68 | 77 | 16 | 20 | 4 | 19 | 46 | 224 |
| 2019 | CON | 34 | 34 | 804 | 104 - 255 | 76 - 199 | 22 - 27 | 9 | 56 | 65 | 39 | 34 | 7 | 28 | 79 | 306 |
| 2020 | ATL | 22 | 15 | 477 | 47 - 138 | 33 - 99 | 8 - 8 | 4 | 38 | 42 | 14 | 7 | 1 | 15 | 43 | 135 |
| 2021 | ATL | 22 | 0 | 218 | 21 - 78 | 13 - 60 | 2 - 5 | 2 | 14 | 16 | 8 | 10 | 4 | 2 | 26 | 57 |
| Career | | 309 | 142 | 6129 | 794 - 1989 | 467 - 1281 | 187 - 250 | 140 | 580 | 720 | 242 | 213 | 54 | 218 | 505 | 2242 |



#10 COURTNEY WILLIAMS

G • 5-8 • 133 • 5 yrs • South Florida

2021 Highlights:

- » Led the team with 14 points in the Dream's season opener against Connecticut (5/14), making a team-high 5 field goals and 2 three-pointers.
- » Saw her fourth-straight double-digit scoring game at Chicago, scoring 18 points by going 3-of-4 from range and adding on 5 rebounds and 3 assists.
- » Led the Dream in points (31), made three-pointers (3), defensive rebounds (10), total rebounds (12), assists (7) and steals (2) against New York (5/29), picking up her first double-double of the season (10th career, 3rd with ATL). It marked her 3rd career 30-point game and 19th career 20-point game. Scored 6 of the Dream's 8 points in OT to win the game.
- » AP Player of the Week (6/2).
- » First ever back-to-back double-doubles with a second at Minnesota (6/4).
- » Second 30-piece of the season came against Phoenix (8/15) off a season-high 14 made field goals off 27 attempts; also led the team with 6 assists and picked up two steals.

C. WILLIAMS 2021 GAME-BY-GAME

| Date | Opp | GS | MP | FGM-A | 3PM-A | FTM-A | OREB | DREB | REB | AST | STL | BLK | TO | PF | PTS |
|------|-------|----|----|---------|-------|-------|------|------|-----|-----|-----|-----|----|----|-----|
| 5/14 | CON | * | 37 | 5 - 14 | 2 - 4 | 2 - 2 | 3 | 1 | 4 | 4 | 2 | 1 | 3 | 3 | 14 |
| 5/19 | CHI | * | 37 | 10 - 19 | 2 - 3 | 2 - 5 | 1 | 7 | 8 | 2 | 3 | 1 | 1 | 2 | 24 |
| 5/21 | @ IND | * | 31 | 6 - 14 | 4 - 7 | 0 - 0 | 2 | 4 | 6 | 4 | 0 | 0 | 1 | 0 | 16 |
| 5/25 | @ CHI | * | 36 | 6 - 15 | 3 - 4 | 3 - 3 | 3 | 2 | 5 | 3 | 0 | 1 | 5 | 1 | 18 |
| 5/27 | DAL | * | 35 | 5 - 17 | 2 - 6 | 2 - 5 | 3 | 5 | 8 | 5 | 0 | 0 | 1 | 1 | 14 |
| 5/29 | @ NYL | * | 43 | 14 - 26 | 3 - 5 | 0 - 0 | 2 | 10 | 12 | 7 | 2 | 1 | 4 | 2 | 31 |
| 6/4 | @ MIN | * | 36 | 6 - 18 | 0 - 2 | 3 - 5 | 4 | 6 | 10 | 4 | 2 | 0 | 3 | 3 | 15 |
| 6/6 | @ MIN | * | 33 | 5 - 12 | 2 - 6 | 1 - 1 | 0 | 5 | 5 | 5 | 0 | 0 | 2 | 1 | 13 |
| 6/9 | SEA | * | 31 | 4 - 15 | 0 - 5 | 0 - 0 | 2 | 3 | 5 | 6 | 0 | 0 | 3 | 3 | 8 |
| 6/11 | SEA | * | 35 | 7 - 20 | 1 - 4 | 4 - 7 | 2 | 9 | 11 | 3 | 1 | 0 | 2 | 1 | 19 |
| 6/13 | WAS | * | 34 | 8 - 13 | 4 - 6 | 1 - 2 | 0 | 3 | 3 | 2 | 3 | 0 | 1 | 5 | 21 |
| 6/17 | @ WAS | * | 37 | 5 - 17 | 0 - 2 | 0 - 0 | 0 | 8 | 8 | 2 | 3 | 1 | 0 | 2 | 10 |
| 6/23 | MIN | * | 36 | 11 - 19 | 0 - 1 | 2 - 3 | 0 | 5 | 5 | 2 | 3 | 0 | 1 | 0 | 24 |
| 6/26 | NYL | * | 32 | 5 - 17 | 1 - 4 | 1 - 2 | 0 | 5 | 5 | 4 | 1 | 0 | 3 | 1 | 12 |
| 6/29 | NYL | * | 36 | 8 - 17 | 1 - 3 | 1 - 2 | 0 | 5 | 5 | 4 | 1 | 0 | 1 | 2 | 18 |
| 7/2 | @ SEA | * | 33 | 9 - 18 | 2 - 4 | 0 - 0 | 3 | 5 | 8 | 7 | 0 | 0 | 1 | 1 | 20 |
| 7/4 | @ LVA | * | 33 | 9 - 18 | 0 - 1 | 1 - 2 | 0 | 3 | 3 | 5 | 0 | 0 | 1 | 3 | 19 |
| 7/9 | @ CON | * | 30 | 4 - 10 | 0 - 1 | 0 - 1 | 0 | 2 | 2 | 3 | 0 | 0 | 0 | 0 | 8 |
| 7/11 | IND | * | 33 | 3 - 16 | 0 - 1 | 0 - 0 | 0 | 4 | 4 | 5 | 1 | 0 | 0 | 3 | 6 |
| 8/15 | @ PHO | * | 38 | 14 - 27 | 1 - 2 | 1 - 2 | 1 | 4 | 5 | 6 | 2 | 0 | 1 | 2 | 30 |
| 8/17 | @ LAS | * | 37 | 2 - 13 | 0 - 1 | 0 - 0 | 1 | 8 | 9 | 5 | 0 | 0 | 2 | 0 | 4 |
| 8/19 | @ LAS | * | 36 | 10 - 22 | 3 - 7 | 0 - 0 | 5 | 6 | 11 | 4 | 1 | 1 | 6 | 3 | 23 |
| 8/21 | PHO | * | 30 | 4 - 16 | 1 - 3 | 0 - 0 | 3 | 4 | 7 | 4 | 1 | 2 | 2 | 1 | 9 |
| 8/24 | CHI | * | 34 | 8 - 17 | 0 - 1 | 0 - 0 | 1 | 5 | 6 | 4 | 1 | 1 | 2 | 0 | 16 |
| 8/26 | LVA | * | 30 | 3 - 11 | 0 - 1 | 0 - 0 | 1 | 7 | 8 | 5 | 2 | 0 | 1 | 5 | 6 |
| 9/2 | @ DAL | * | 34 | 11 - 23 | 2 - 5 | 1 - 1 | 2 | 2 | 4 | 7 | 1 | 0 | 4 | 2 | 25 |
| 9/5 | @ DAL | * | 31 | 6 - 16 | 1 - 1 | 4 - 4 | 1 | 4 | 5 | 2 | 0 | 1 | 0 | 1 | 17 |
| 9/8 | PHO | * | 36 | 9 - 21 | 1 - 3 | 1 - 2 | 2 | 12 | 14 | 5 | 0 | 1 | 2 | 0 | 20 |
| 9/10 | @ WAS | * | 34 | 11 - 18 | 1 - 2 | 0 - 0 | 1 | 5 | 6 | 2 | 1 | 2 | 1 | 0 | 23 |
| 9/14 | IND | | | | | | | | | | | | | | |
| 9/16 | LAS | | | | | | | | | | | | | | |
| 9/19 | @ CON | | | | | | | | | | | | | | |

SEASON/CAREER HIGHS

| | |
|-------------------------|--------------|
| Points (2021) | 31 (5/29) |
| Points (Career) | 34 (6/13/18) |
| FG Made (2021) | 14 (2 times) |
| FG Made (Career) | 15 (6/13/18) |
| FG Attempted (2021) | 27 (8/15) |
| FG Attempted (Career) | 29 (6/13/18) |
| FT Made (2021) | 4 (2 times) |
| FT Made (Career) | 5 (2 times) |
| FT Attempted (2021) | 7 (6/11) |
| FT Attempted (Career) | 7 (6/11/21) |
| 3PT FG Made (2021) | 4 (2 times) |
| 3PT FG Made (Career) | 6 (9/29/19) |
| 3PT FG Attempt. (2021) | 7 (2 times) |
| 3PT FG Att. (Career) | 10 (6/13/18) |
| Off. Rebounds (2021) | 5 (8/19) |
| Off. Rebounds (Career) | 6 (8/14/20) |
| Def. Rebounds (2021) | 12 (9/8) |
| Def. Rebounds (Career) | 12 (2 times) |
| Total Rebounds (2021) | 14 (9/8) |
| Total Rebounds (Career) | 14 (2 times) |
| Assists (2021) | 7 (3 times) |
| Assists (Career) | 9 (9/6/19) |
| Blocks (2021) | 2 (8/21) |
| Blocks (Career) | 2 (3 times) |
| Steals (2021) | 3 (4 times) |
| Steals (Career) | 6 (8/16/19) |
| Minutes (2021) | 43 (5/29) |
| Minutes (Career) | 43 (5/29) |

C. WILLIAMS CAREER

| Season | Team | G | GS | MIN | FGM-A | 3PM-A | FTM-A | OR | DR | TOT | AST | STL | BS | TO | PF | PTS |
|--------|------|-----|-----|------|------------|-----------|-----------|-----|-----|-----|-----|-----|----|-----|-----|------|
| 2016 | TOT | 25 | 0 | 351 | 68 - 166 | 8 - 27 | 12 - 21 | 28 | 48 | 76 | 30 | 12 | 3 | 21 | 30 | 156 |
| 2017 | CON | 34 | 28 | 884 | 185 - 390 | 12 - 37 | 36 - 41 | 45 | 97 | 142 | 71 | 19 | 8 | 48 | 55 | 418 |
| 2018 | CON | 30 | 29 | 812 | 171 - 375 | 20 - 53 | 17 - 25 | 46 | 132 | 178 | 90 | 23 | 2 | 54 | 47 | 379 |
| 2019 | CON | 34 | 34 | 988 | 187 - 430 | 16 - 35 | 60 - 75 | 48 | 141 | 189 | 129 | 46 | 13 | 56 | 47 | 450 |
| 2020 | ATL | 20 | 14 | 609 | 134 - 307 | 8 - 34 | 16 - 23 | 37 | 106 | 143 | 63 | 13 | 2 | 54 | 39 | 292 |
| 2021 | ATL | 29 | 29 | 996 | 208 - 499 | 37 - 95 | 30 - 49 | 43 | 149 | 192 | 121 | 31 | 14 | 54 | 48 | 483 |
| Career | | 172 | 134 | 4640 | 953 - 2167 | 101 - 281 | 171 - 234 | 247 | 673 | 921 | 504 | 144 | 42 | 287 | 266 | 2178 |

| | |
|-------------------------|----|
| Double-Doubles (2021) | 4 |
| Double-Doubles (Career) | 13 |



#1 ELIZABETH WILLIAMS

C-F • 6-3 • 200 • 6 yrs • Duke

2021 Highlights:

- » Started in the Dream's opener against Connecticut (5/14) and scored 6 points with 4 rebounds, 2 steals and a block.
- » First double-double of the season and 13th of her career with 12 points and 11 rebounds at New York (5/29) in a season-high 29 minutes.
- » Season-best 12 total rebounds (7 offensive) against Seattle (6/9), tying her career high record of 10 rebounds in the first half for the third time.
- » Has recorded seven games so far this season with two or more blocks, seven games with two or more steals.

E. WILLIAMS 2020 GAME-BY-GAME

| Date | Opp | GS | MP | FGM-A | 3PM-A | FTM-A | OREB | DREB | REB | AST | STL | BLK | TO | PF | PTS |
|------|-------|----|----|-------|-------|-------|------|------|-----|-----|-----|-----|----|----|-----|
| 5/14 | CON | * | 20 | 3-4 | 0-0 | 0-0 | 1 | 3 | 4 | 0 | 2 | 1 | 1 | 2 | 6 |
| 5/19 | CHI | * | 18 | 3-6 | 0-0 | 1-6 | 3 | 3 | 6 | 0 | 2 | 1 | 1 | 0 | 7 |
| 5/21 | @ IND | * | 20 | 0-2 | 0-0 | 0-0 | 3 | 1 | 4 | 1 | 1 | 1 | 0 | 2 | 0 |
| 5/25 | @ CHI | * | 24 | 3-7 | 0-0 | 1-3 | 3 | 0 | 3 | 1 | 3 | 2 | 1 | 2 | 7 |
| 5/27 | DAL | * | 19 | 3-4 | 0-0 | 0-2 | 0 | 4 | 4 | 0 | 1 | 1 | 0 | 2 | 6 |
| 5/29 | @ NYL | * | 29 | 5-8 | 0-0 | 2-2 | 4 | 7 | 11 | 0 | 2 | 2 | 1 | 1 | 12 |
| 6/4 | @ MIN | * | 24 | 0-1 | 0-0 | 2-4 | 0 | 1 | 1 | 2 | 2 | 0 | 0 | 3 | 2 |
| 6/6 | @ MIN | * | 22 | 2-2 | 0-0 | 1-2 | 2 | 3 | 5 | 2 | 1 | 0 | 3 | 4 | 5 |
| 6/9 | SEA | * | 24 | 4-6 | 0-0 | 0-0 | 7 | 5 | 12 | 0 | 0 | 0 | 1 | 0 | 8 |
| 6/11 | SEA | * | 16 | 3-3 | 0-0 | 0-0 | 0 | 2 | 2 | 1 | 0 | 0 | 0 | 3 | 6 |
| 6/13 | WAS | * | 28 | 2-3 | 0-0 | 2-2 | 3 | 4 | 7 | 5 | 1 | 1 | 2 | 4 | 6 |
| 6/17 | @ WAS | * | 13 | 1-2 | 0-0 | 1-1 | 0 | 5 | 5 | 0 | 0 | 0 | 1 | 1 | 3 |
| 6/23 | MIN | * | 31 | 1-4 | 0-0 | 2-2 | 3 | 4 | 7 | 2 | 3 | 3 | 1 | 3 | 4 |
| 6/26 | NYL | * | 17 | 2-6 | 0-0 | 0-0 | 1 | 0 | 1 | 0 | 1 | 0 | 0 | 0 | 4 |
| 6/29 | NYL | * | 17 | 0-6 | 0-0 | 1-2 | 3 | 3 | 6 | 0 | 1 | 2 | 0 | 0 | 1 |
| 7/2 | @ SEA | * | 20 | 5-8 | 0-0 | 0-0 | 2 | 0 | 2 | 0 | 1 | 0 | 1 | 1 | 10 |
| 7/4 | @ LVA | * | 21 | 3-4 | 0-0 | 4-4 | 0 | 1 | 1 | 1 | 0 | 0 | 0 | 3 | 10 |
| 7/9 | @ CON | * | 21 | 2-3 | 0-0 | 0-0 | 0 | 3 | 3 | 0 | 1 | 2 | 1 | 2 | 4 |
| 7/11 | IND | * | 25 | 3-7 | 0-0 | 2-4 | 2 | 5 | 7 | 3 | 0 | 0 | 0 | 4 | 8 |
| 8/15 | @ PHO | * | 22 | 2-4 | 0-0 | 0-0 | 2 | 1 | 3 | 0 | 1 | 1 | 0 | 1 | 4 |
| 8/17 | @ LAS | * | 21 | 4-4 | 0-0 | 1-3 | 5 | 1 | 6 | 2 | 3 | 1 | 2 | 3 | 9 |
| 8/19 | @ LAS | * | 23 | 3-5 | 0-0 | 0-0 | 1 | 3 | 4 | 1 | 0 | 2 | 1 | 2 | 6 |
| 8/21 | PHO | * | 33 | 0-0 | 0-0 | 1-2 | 0 | 3 | 3 | 0 | 3 | 0 | 1 | 2 | 1 |
| 8/24 | CHI | * | 29 | 2-7 | 0-0 | 2-4 | 5 | 1 | 6 | 2 | 0 | 4 | 1 | 0 | 6 |
| 8/26 | LVA | * | 27 | 3-7 | 0-0 | 0-0 | 1 | 1 | 2 | 3 | 0 | 1 | 0 | 4 | 6 |
| 9/2 | @ DAL | * | 31 | 1-2 | 0-0 | 1-2 | 0 | 6 | 6 | 2 | 1 | 4 | 1 | 0 | 3 |
| 9/5 | @ DAL | * | 33 | 5-11 | 0-0 | 0-0 | 3 | 1 | 4 | 3 | 0 | 4 | 0 | 1 | 10 |
| 9/8 | PHO | * | 32 | 6-10 | 0-0 | 0-0 | 1 | 8 | 9 | 3 | 1 | 1 | 1 | 3 | 12 |
| 9/10 | @ WAS | * | 19 | 1-5 | 0-0 | 0-2 | 4 | 3 | 7 | 0 | 2 | 2 | 1 | 3 | 2 |
| 9/14 | IND | | | | | | | | | | | | | | |
| 9/16 | LAS | | | | | | | | | | | | | | |
| 9/19 | @ CON | | | | | | | | | | | | | | |

SEASON/CAREER HIGHS

| | |
|-------------------------|--------------|
| Points (2021) | 12 (2 times) |
| Points (Career) | 22 (8/7/18) |
| FG Made (2021) | 6 (9/8) |
| FG Made (Career) | 11 (8/7/18) |
| FG Attempted (2021) | 11 (9/5) |
| FG Attempted (Career) | 16 (4 times) |
| FT Made (2021) | 4 (7/4) |
| FT Made (Career) | 9 (7/31/20) |
| FT Attempted (2021) | 6 (5/19) |
| FT Attempted (Career) | 12 (7/31/20) |
| 3PT FG Made (2021) | N/A |
| 3PT FG Made (Career) | N/A |
| 3PT FG Attempt. (2021) | N/A |
| 3PT FG Att. (Career) | 1 (2 times) |
| Off. Rebounds (2021) | 7 (6/9) |
| Off. Rebounds (Career) | 8 (8/8/17) |
| Def. Rebounds (2021) | 8 (9/8) |
| Def. Rebounds (Career) | 13 (8/26/17) |
| Total Rebounds (2021) | 12 (6/9) |
| Total Rebounds (Career) | 16 (9/11/16) |
| Assists (2021) | 5 (6/13) |
| Assists (Career) | 6 (2 times) |
| Blocks (2021) | 4 (3 times) |
| Blocks (Career) | 8 (9/5/19) |
| Steals (2021) | 3 (4 times) |
| Steals (Career) | 4 (7/9/17) |
| Minutes (2021) | 33 (2 times) |
| Minutes (Career) | 45 (6/22/16) |
| Double-Doubles (2021) | 1 |
| Double-Doubles (Career) | 13 |

E WILLIAMS CAREER

| Season | Team | G | GS | MIN | FGM-A | 3PM-A | FTM-A | OR | DR | TOT | AST | STL | BS | TO | PF | PTS |
|--------|------|-----|-----|------|----------|-------|---------|-----|-----|------|-----|-----|-----|-----|-----|------|
| 2015 | CON | 21 | 0 | 246 | 28-53 | 0-0 | 14-25 | 22 | 46 | 68 | 8 | 6 | 19 | 11 | 20 | 70 |
| 2016 | ATL | 34 | 34 | 1179 | 157-355 | 0-1 | 92-133 | 106 | 170 | 276 | 42 | 26 | 79 | 42 | 105 | 406 |
| 2017 | ATL | 34 | 34 | 1069 | 149-307 | 0-1 | 54-82 | 107 | 139 | 246 | 46 | 36 | 67 | 46 | 81 | 352 |
| 2018 | ATL | 33 | 32 | 885 | 121-221 | 0-0 | 58-103 | 71 | 119 | 190 | 46 | 26 | 59 | 41 | 88 | 300 |
| 2019 | ATL | 32 | 32 | 909 | 107-235 | 0-0 | 82-112 | 99 | 109 | 208 | 37 | 24 | 53 | 41 | 71 | 296 |
| 2020 | ATL | 22 | 22 | 642 | 87-178 | 0-0 | 49-66 | 49 | 76 | 125 | 31 | 17 | 30 | 25 | 57 | 223 |
| 2021 | ATL | 29 | 29 | 680 | 72-141 | 0-0 | 24-47 | 60 | 82 | 142 | 34 | 33 | 36 | 23 | 56 | 168 |
| Career | | 205 | 183 | 5610 | 721-1490 | 0-2 | 373-568 | 514 | 741 | 1255 | 244 | 168 | 343 | 229 | 478 | 1815 |

Atlanta Dream (7-21) vs. Washington Mystics (10-18)

| | Atlanta | | Washington | | 2021 | | 2020 | |
|------------------|---------------|---------------|---------------|---------------|---------------------|----------------------|----------------------|----------------------|
| | 2021 | 2020 | 2021 | 2020 | Best | Worst | Best | Worst |
| Pts/Game | 79.5 8th | 81.0 9th | 79.8 7th | 80.0 11th | 89.1 Las Vegas | 72.6 Los Angeles | 88.7 Las Vegas | 71.9 New York |
| Opp Pts/Game | 85.0 11th | 87.6 11th | 84.2 10th | 81.5 6th | 70.7 Connecticut | 85.6 New York | 76.0 Seattle | 89.5 Indiana |
| Net Pts/Game | -5.5 10th | -6.7 10th | -4.4 8th | -1.5 8th | 8.5 Connecticut | -9.3 Indiana | 11.5 Seattle | -14.0 New York |
| Poss/40 Min | 82.1 4th | 83.4 5th | 81.3 6th | 80.1 12th | 83.6 Las Vegas | 77.5 Connecticut | 84.3 New York | 80.1 Washington |
| Pts/100 Poss | 95.4 9th | 96.4 11th | 97.4 8th | 98.1 9th | 105.3 Las Vegas | 89.6 Los Angeles | 106.4 Las Vegas | 85.6 New York |
| Opp Pts/100 Poss | 103.2 10th | 104.7 10th | 103.4 11th | 101.4 8th | 91.1 Connecticut | 104.7 Indiana | 91.8 Seattle | 110.1 Indiana |
| Margin/100 Poss | -7.8 11th | -8.4 10th | -6.0 9th | -3.3 8th | 10.1 Las Vegas | -12.3 Indiana | 14.2 Seattle | -15.9 New York |
| Field Goal % | 41.7% 9th | 44.2% 7th | 40.6% 11th | 43.3% 9th | 46.9% Las Vegas | 40.4% Los Angeles | 49.1% Chicago | 37.2% New York |
| Free Throw % | 71.6% 12th | 75.8% 11th | 81.1% 6th | 82.5% 2nd | 84.7% Chicago | 71.6% Atlanta | 82.5% Phoenix | 75.5% Connecticut |
| 2-Point % | 45.4% 10th | 47.1% 10th | 45.9% 8th | 48.3% 7th | 50.2% Minnesota | 43.8% Los Angeles | 55.7% Chicago | 43.9% New York |
| 3-Point % | 31.7% 11th | 35.0% 6th | 32.5% 10th | 34.1% 9th | 38.2% Seattle | 27.8% Indiana | 39.8% Los Angeles | 27.7% New York |
| Eff Field Goal % | 46.0% 10th | 48.4% 9th | 47.1% 9th | 49.3% 8th | 51.3% Seattle | 44.7% Indiana | 54.7% Chicago | 43.0% New York |
| Pts/Scoring Att | 0.98 12th | 1.04 10th | 1.03 9th | 1.06 8th | 1.11 Seattle | 0.98 Atlanta | 1.16 Chicago | 0.97 New York |
| Points per Play | 0.85 10th | 0.87 10th | 0.88 7th | 0.90 8th | 0.97 Las Vegas | 0.83 Indiana | 0.97 Seattle | 0.78 New York |
| Free Throw Rate | 11.8% 12th | 11.6% 12th | 15.3% 2nd | 13.2% 9th | 16.5% Phoenix | 11.8% Atlanta | 17.8% Phoenix | 11.6% Atlanta |
| Three Point Rate | 24.5% 10th | 21.6% 11th | 35.6% 2nd | 32.4% 3rd | 38.7% New York | 16.3% Las Vegas | 37.0% New York | 14.6% Las Vegas |
| % Pts from FT | 14.6% 12th | 15.1% 11th | 17.7% 4th | 15.5% 10th | 20.6% Las Vegas | 14.6% Atlanta | 21.5% Las Vegas | 14.0% Chicago |
| % Pts from 2 | 61.7% 10th | 63.0% 11th | 48.6% 2nd | 53.3% 5th | 45.5% New York | 63.2% Las Vegas | 47.2% New York | 64.2% Las Vegas |
| % Pts from 3 | 23.7% 10th | 21.9% 11th | 33.7% 2nd | 31.2% 3rd | 39.2% New York | 16.3% Las Vegas | 32.0% Dallas | 14.3% Las Vegas |

Atlanta Dream (7-21) vs. Washington Mystics (10-18)

| | Atlanta | | Washington | | 2021 | | 2020 | |
|---------------------|---------------|---------------|---------------|---------------|----------------------|----------------------|--------------------|----------------------|
| | 2021 | 2020 | 2021 | 2020 | Best | Worst | Best | Worst |
| Opp Field Goal % | 46.3% 11th | 45.7% 9th | 46.6% 12th | 46.4% 10th | 40.7% Connecticut | 46.6% Washington | 40.1% Seattle | 47.2% Indiana |
| Opp Free Throw % | 78.6% 3rd | 81.6% 7th | 80.3% 5th | 79.6% 4th | 77.7% Dallas | 82.7% New York | 77.7% Chicago | 82.9% New York |
| Opp 2-Point % | 49.9% 10th | 51.0% 12th | 49.9% 11th | 50.9% 10th | 44.9% Connecticut | 50.1% Dallas | 45.0% Seattle | 51.0% Atlanta |
| Opp 3-Point % | 39.2% 12th | 34.8% 7th | 38.8% 11th | 36.8% 9th | 30.2% Las Vegas | 39.2% Atlanta | 30.6% Seattle | 37.3% Los Angeles |
| Opp Eff FG % | 52.8% 12th | 51.4% 9th | 52.4% 11th | 52.3% 12th | 46.0% Connecticut | 52.8% Atlanta | 45.4% Seattle | 52.3% Washington |
| Opp Pts/Scoring Att | 1.14 12th | 1.12 9th | 1.13 11th | 1.13 10th | 0.99 Phoenix | 1.14 Atlanta | 1.00 Seattle | 1.14 Dallas |
| Opp Pts/Play | 0.94 10th | 0.95 10th | 0.95 11th | 0.93 8th | 0.85 Connecticut | 0.96 Indiana | 0.82 Seattle | 1.00 Indiana |
| Opp FT Rate | 16.7% 11th | 15.6% 9th | 14.2% 7th | 15.3% 6th | 11.4% Phoenix | 17.2% Los Angeles | 11.9% Las Vegas | 15.7% Dallas |
| Opp 3P Rate | 29.4% 11th | 29.0% 8th | 27.2% 3rd | 28.6% 7th | 23.5% Chicago | 29.6% Connecticut | 23.4% Indiana | 32.2% Las Vegas |
| % Opp Pts from FT | 18.4% 9th | 18.4% 8th | 16.8% 4th | 17.2% 4th | 14.9% Phoenix | 21.6% Los Angeles | 13.9% Las Vegas | 19.8% Dallas |
| % Opp Pts from 2 | 51.3% 11th | 54.6% 8th | 55.2% 7th | 54.7% 7th | 58.9% Phoenix | 50.4% Los Angeles | 58.6% Chicago | 53.0% Los Angeles |
| % Opp Pts from 3 | 30.3% 12th | 27.1% 7th | 28.0% 8th | 28.1% 8th | 23.7% Chicago | 30.3% Atlanta | 22.8% Indiana | 30.4% Los Angeles |

Atlanta Dream (7-21) vs. Washington Mystics (10-18)

| | Atlanta | | Washington | | 2021 | | 2020 | |
|--------------------|----------------------|----------------------|----------------------|----------------------|----------------------|----------------------|---------------------|----------------------|
| | 2021 | 2020 | 2021 | 2020 | Best | Worst | Best | Worst |
| Off Reb/Game | 9.7 2nd | 9.0 3rd | 8.3 6th | 7.3 10th | 10.1 Dallas | 6.1 New York | 10.0 Connecticut | 6.4 Los Angeles |
| Off Reb Rate | 24.5% 5th | 25.3% 4th | 22.1% 7th | 21.2% 11th | 30.1% Connecticut | 17.3% Los Angeles | 30.4% Minnesota | 19.5% Los Angeles |
| Def Reb/Game | 24.2 11th | 25.8 6th | 24.8 10th | 24.2 11th | 31.4 Las Vegas | 23.1 Los Angeles | 29.3 Las Vegas | 23.7 Dallas |
| Def Reb Rate | 74.5% 10th | 75.7% 7th | 76.5% 7th | 76.1% 5th | 82.3% Connecticut | 70.4% Los Angeles | 78.9% Las Vegas | 73.1% Phoenix |
| Total Reb/Game | 33.9 9th | 34.9 4th | 33.1 11th | 31.5 11th | 38.7 Las Vegas | 29.4 Los Angeles | 37.4 Las Vegas | 31.4 Los Angeles |
| Total Reb Rate | 47.1% 11th | 49.9% 7th | 47.3% 10th | 47.6% 11th | 57.0% Connecticut | 42.7% Los Angeles | 53.3% Las Vegas | 47.3% Dallas |
| Assists/Game | 18.0 9th | 16.9 10th | 18.4 7th | 19.7 7th | 21.9 Chicago | 15.5 Los Angeles | 21.9 Seattle | 14.9 New York |
| Turnovers/Game | 12.0 2nd | 14.9 7th | 12.8 4th | 13.7 3rd | 11.8 Las Vegas | 16.9 New York | 12.4 Dallas | 17.8 New York |
| Assists/Turnovers | 1.50 3rd | 1.13 11th | 1.44 5th | 1.44 3rd | 1.77 Las Vegas | 1.10 Indiana | 1.65 Las Vegas | 0.83 New York |
| Assisted Shot Rate | 58.4% 9th | 53.7% 11th | 65.0% 6th | 66.6% 3rd | 70.8% Chicago | 57.4% Los Angeles | 68.8% Seattle | 53.1% Dallas |
| Steals/Game | 9.3 1st | 6.9 9th | 7.0 6th | 7.9 6th | 9.3 Atlanta | 4.6 Phoenix | 10.0 Seattle | 5.1 Indiana |
| Steal Rate | 10.2% 1st | 7.5% 9th | 7.8% 5th | 8.9% 6th | 10.2% Atlanta | 5.1% Phoenix | 10.9% Seattle | 5.7% Indiana |
| Blocks/Game | 4.5 4th | 3.3 5th | 3.1 12th | 2.2 12th | 5.4 Phoenix | 3.1 Washington | 5.6 Phoenix | 2.2 Washington |
| Block Rate | 10.2% 3rd | 7.1% 5th | 6.7% 12th | 5.1% 12th | 10.7% Phoenix | 6.7% Washington | 11.3% Phoenix | 5.1% Washington |
| Fouls/Game | 18.5 9th | 18.5 8th | 17.5 4th | 17.0 4th | 14.9 Las Vegas | 19.5 Chicago | 15.0 Las Vegas | 19.7 Phoenix |
| Foul Rate | 20.4% 8th | 20.2% 7th | 19.7% 5th | 19.3% 4th | 16.1% Las Vegas | 21.7% Connecticut | 16.4% Las Vegas | 21.8% Dallas |

Atlanta Dream (7-21) vs. Washington Mystics (10-18)

| | Atlanta | | Washington | | 2021 | | 2020 | |
|----------------------|---------------|---------------|---------------|---------------|----------------------|----------------------|---------------------|----------------------|
| | 2021 | 2020 | 2021 | 2020 | Best | Worst | Best | Worst |
| Opp Off Reb/Game | 8.3 8th | 8.3 8th | 7.6 5th | 7.6 2nd | 5.8 Connecticut | 9.7 Los Angeles | 7.0 Connecticut | 9.7 Phoenix |
| Opp Off Reb Rate | 25.5% 10th | 24.3% 7th | 23.5% 7th | 23.9% 5th | 17.7% Connecticut | 29.6% Los Angeles | 21.1% Las Vegas | 26.9% Phoenix |
| Opp Def Reb/Game | 29.8 12th | 26.8 9th | 29.2 10th | 27.1 10th | 21.7 Connecticut | 29.8 Atlanta | 22.7 Minnesota | 28.9 New York |
| Opp Def Reb Rate | 75.5% 5th | 74.7% 4th | 77.9% 7th | 78.8% 11th | 69.9% Connecticut | 82.7% Los Angeles | 69.6% Minnesota | 80.5% Los Angeles |
| Opp Total Reb/Game | 38.0 11th | 35.0 9th | 36.9 10th | 34.7 8th | 27.5 Connecticut | 39.4 Los Angeles | 30.9 Minnesota | 37.0 New York |
| Opp Total Reb Rate | 52.9% 11th | 50.1% 7th | 52.7% 10th | 52.4% 11th | 43.0% Connecticut | 57.3% Los Angeles | 46.7% Las Vegas | 52.7% Dallas |
| Opp Assists/Game | 21.2 12th | 20.1 11th | 19.6 7th | 17.8 1st | 17.0 Los Angeles | 21.2 Atlanta | 17.8 Washington | 20.5 Dallas |
| Opp Turnovers/Game | 16.3 2nd | 13.6 10th | 14.5 4th | 15.6 4th | 18.3 Los Angeles | 10.9 Phoenix | 17.5 Los Angeles | 11.1 Indiana |
| Opp Assists/Turnover | 1.30 4th | 1.47 10th | 1.35 5th | 1.14 2nd | 0.93 Los Angeles | 1.61 Indiana | 1.09 Seattle | 1.73 Indiana |
| Opp Assisted Shot % | 69.7% 12th | 63.1% 7th | 63.0% 6th | 59.5% 3rd | 56.4% Phoenix | 69.7% Atlanta | 57.7% New York | 68.0% Los Angeles |
| Opp Steals/Game | 6.0 1st | 8.3 9th | 6.9 8th | 6.3 2nd | 6.0 Atlanta | 8.1 Minnesota | 5.8 Dallas | 9.5 New York |
| Opp Steal Rate | 6.4% 1st | 8.9% 7th | 7.7% 6th | 7.1% 3rd | 6.4% Atlanta | 9.1% Minnesota | 6.3% Dallas | 10.3% New York |
| Opp Blocks/Game | 4.0 6th | 3.8 9th | 3.8 4th | 2.8 2nd | 3.5 Phoenix | 5.4 Dallas | 2.3 Los Angeles | 4.7 Las Vegas |
| Opp Block Rate | 7.3% 2nd | 7.0% 5th | 9.0% 7th | 6.4% 3rd | 6.4% Las Vegas | 11.4% Dallas | 4.7% Los Angeles | 12.2% New York |
| Opp Fouls/Game | 16.5 11th | 16.7 9th | 17.5 7th | 16.7 9th | 19.3 Las Vegas | 16.0 Dallas | 20.6 Las Vegas | 16.3 Chicago |
| Opp Foul Rate | 17.7% 11th | 18.0% 12th | 19.4% 7th | 18.8% 9th | 21.3% Phoenix | 17.3% Dallas | 22.6% Las Vegas | 18.0% Atlanta |

2021 ATLANTA DREAM SPOTTERS GUIDE

WITH TWITTER HANDLES



0

Odyssey Sims

G • 5-8 • 120
@Lucky_Lefty0



1

Elizabeth Williams

C-F • 6-3 • 200
@E_Williams_1



3

Chennedy Carter

G • 5-9 • 145
@ChennedyCarter



4

Aari McDonald

G • 5-6 • 141
@AariMcdonald



9

Crystal Bradford

G • 6-0 • 170
@get_em_cb



10

Courtney Williams

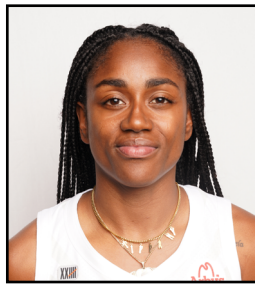
G • 5-8 • 133
@CourtMWilliams



11

Blake Dietrick

G • 5-10 • 169



15

Tiffany Hayes

G • 5-10 • 155
@tiphayes3



21

Tianna Hawkins

F • 6-3 • 181
@t_hawk21



24

Candice Dupree

F • 6-2 • 178



25

Monique Billings

F • 6-4 • 185
@moniquebillings



32

Cheyenne Parker

F • 6-4 • 198



40

Shekinna Stricklen

F • 6-2 • 229
@strick40



Darius Taylor

Interim Head Coach
@DariusTaylor



La'Keshia Frett

Assistant Coach
@LakeshiaFrett



Daynia La-Force

Assistant Coach
@CoachLaForce



Natalie Trotter

Athletic Trainer



Brooklyn Cartwright

Director of Operations
@bkcartwright



Sydney Durrah

Video Coordinator/
Director of Scouting
@VcSyd



Drew Williams

Strength and
Conditioning Coach