



SEATTLE STORM 2019 GAME NOTES

3-TIME WNBA CHAMPION • 2004, 2010, 2018

2019 SCHEDULE/RESULTS

HOME: 1-0 ROAD: 0-1 OVERALL: 1-1

PRESEASON

Date	Opponent	Result
5/15	PHOENIX*	L, 87-84
5/17	at Los Angeles	L, 92-85

REGULAR SEASON

Date	Opponent	Time/Result	Record
5/25	PHOENIX*	12:30 p.m.	W, 77-68
5/29	at Minnesota	5 p.m.	L, 72-61
5/31	at Atlanta	4:30 p.m.	--
6/1	at Chicago	5 p.m.	--
6/4	MINNESOTA*	7 p.m.	--
6/9	at Chicago	3 p.m.	--
6/11	at Indiana	4 p.m.	--
6/14	at Washington	4 p.m.	--
6/16	at Connecticut	12:30 p.m.	--
6/21	LOS ANGELES*	7:30 p.m.	--
6/23	INDIANA^	4 p.m.	--
6/25	at Las Vegas	7 p.m.	--
6/28	CHICAGO^	7 p.m.	--
6/30	PHOENIX^	4 p.m.	--
7/3	NEW YORK^	12 p.m.	--
7/5	ATLANTA^	7 p.m.	--
7/12	DALLAS^	7 p.m.	--
7/14	NEW YORK^	4 p.m.	--
7/17	at Minnesota	5 p.m.	--
7/19	LAS VEGAS^	7 p.m.	--
7/23	at Las Vegas	7 p.m.	--
8/2	WASHINGTON*	7 p.m.	--
8/4	at Los Angeles	2 p.m.	--
8/8	DALLAS*	7 p.m.	--
8/11	at New York	12 p.m.	--
8/14	at Washington	5 p.m.	--
8/16	at Connecticut	4:30 p.m.	--
8/18	MINNESOTA^	4 p.m.	--
8/25	INDIANA^	4 p.m.	--
8/27	CONNECTICUT^	7 p.m.	--
9/1	ATLANTA^	4 p.m.	--
9/3	at Phoenix	7 p.m.	--
9/5	at Los Angeles	7 p.m.	--
8/8	at Dallas	1 p.m.	--

*Angel of the Winds Arena

^Alaska Airlines Arena

- ALL TIMES PACIFIC -

SEATTLE ROSTER NOTES

Sue Bird (OUT - Knee)
Sami Whitcomb (OUT - Rest)
Alysha Clark (Probable - Rest)

STORM PR CONTACTS

Riley Foreman
Manager, Public Relations
rforeman@StormBasketball.com
O: (206) 272-2706 | M: (425) 246-2614

Jillian Anderson
Communications Coordinator
janderson@StormBasketball.com

TONIGHT'S MATCHUP



VS



SEATTLE STORM (1-1) at ATLANTA DREAM (1-0)

Overall Game #3, Away Game #2
State Farm Arena | Atlanta, Georgia
Friday, May 31, 2019 | 4:30 p.m. PT
Broadcast: CBS Sports Network

TONIGHT'S PROBABLE STARTERS



KALEENA MOSQUEDA-LEWIS (5-11 · 180 · Forward · 5th Season · Connecticut)

GP/S 2/2 PTS 6.0 REB 2.5 AST 1.0 STL 1.0 FG% 50.0 3FG% 40.0 MIN 18.9

2019 SEASON HIGHLIGHTS:

- Through two games, Seattle owns a 37.5% 3-pt FG pct in 38 minutes with Mosqueda-Lewis on the floor (11.1% in 42 minutes with her on the bench)



CRYSTAL LANGHORNE (6-2 · 180 · Forward · 12th Season · Maryland)

GP/S 2/2 PTS 8.5 REB 3.5 AST 0.5 STL 0 FG% 40.0 3FG% 0.0 MIN 28.1

2019 SEASON HIGHLIGHTS:

- 10 points on 5/25/19 vs. Phoenix... her third game scoring in double-figures since the start of 2018



NATASHA HOWARD (6-2 · 155 · Forward · 6th Season · Florida State)

GP/S 2/2 PTS 19.5 REB 10.5 AST 0.5 STL 3.0 FG% 47.1 3FG% 20.0 MIN 32.7

2019 SEASON HIGHLIGHTS:

- Recorded career-high 16 rebounds on 5/25/19 vs. Phoenix and tied personal best with 5 steals (also 8/3/18 vs. Minnesota & 8/6/18 vs. New York)
- Scored 14 of her 18 points in the paint on 5/29/19 at Minnesota



JEWELL LOYD (5-10 · 165 · Guard · 5th Season · Notre Dame)

GP/S 2/2 PTS 15.0 REB 4.0 AST 3.0 STL 2.0 FG% 29.0 3FG% 25.0 MIN 34.3

2019 SEASON HIGHLIGHTS:

- Scored 14 of her 17 points in the second half on 5/25/19 vs. Phoenix
- Was 7-7 from the free throw line on 5/25/19 vs. Phoenix... her 10th perfect game from the foul line (minimum 7 FTA)



JORDIN CANADA (5-6 · 135 · Guard · 2nd Season · UCLA)

GP/S 2/2 PTS 11.5 REB 2.5 AST 5.0 STL 2.5 FG% 42.9 3FG% 0.0 MIN 31.0

2019 SEASON HIGHLIGHTS:

- Recorded career-high 16 points on 5/25/19 vs. Phoenix
- Two starts in 2019 matches her 2018 total

SEATTLE RESERVES

NO.	NAME	POS.	HT.	COLLEGE	EXP	PPG	RPG	MPG
10	Sue Bird	G	5-9	Connecticut	17	--	--	--
32	Alysha Clark	F	5-11	MTSU	7	--	--	--
5	Anriel Howard	F	5-11	MSST	R	3.0	1.0	10.1
3	Courtney Paris	C	6-4	Oklahoma	9	0	2.0	6.9
2	Mercedes Russell	C	6-6	Tennessee	1	2.0	3.5	15.7
33	Sami Whitcomb	G	5-10	Washington	2	4.0	0.5	13.5
11	Shavonte Zellous	G	5-10	Pittsburgh	10	1.0	0.5	17.3

PREGAME MEDIA AVAILABILITY

Per WNBA rules, the Storm will hold pregame media from 90:00 - 60:00 on the pregame countdown clock. There are preset times for the following athletes and acting head coach Gary Kloppenburg, but please notify a member of the Storm PR department if you wish to speak with an athlete not listed below.

90:00 - Gary Kloppenburg

75:00 - Jordin Canada



2019 SEASON ROSTER (ALPHABETICAL)

NO	PLAYER	POS	HT	WT	DOB	FROM	EXP
10	Sue Bird	G	5-9	148	10/16/80	Connecticut	17
21	Jordin Canada	G	5-6	135	8/11/95	UCLA	1
32	Alysha Clark	F	5-11	167	7/7/87	Middle Tennessee St.	7
5	Anriel Howard	F	5-11	176	5/6/97	Mississippi St.	R
6	Natasha Howard	F	6-2	155	9/2/91	Florida St.	5
1	Crystal Langhorne	F	6-2	180	10/27/86	Maryland	11
24	Jewell Loyd	G	5-10	150	10/5/93	Notre Dame	4
23	Kaleena Mosqueda-Lewis	F	5-11	180	11/3/93	Connecticut	4
3	Courtney Paris	C	6-4	250	9/21/87	Oklahoma	9
2	Mercedes Russell	C	6-6	195	4/27/95	Tennessee	1
33	Sami Whitcomb	G	5-10	150	7/20/88	Washington	2
11	Shavonte Zellous	G	5-10	188	8/28/86	Pittsburgh	10

2019 BROADCAST SCHEDULE

DAY	DATE	OPPONENT	TIME (LOCAL)	BROADCAST
MAY				
Sat.	25	PHOENIX	12:30 p.m.	ABC
Wed.	29	at Minnesota	7 p.m.	CBS Sports Network
Fri.	31	at Atlanta	7:30 p.m.	CBS Sports Network
JUNE				
Sat.	1	at Chicago	7 p.m.	
Tue.	4	MINNESOTA	7 p.m.	JOEtv/Twitter
Sun.	9	at Chicago	5 p.m.	NBA TV
Tue.	11	at Indiana	7 p.m.	Twitter
Fri.	14	at Washington	7 p.m.	CBS Sports Network
Sun.	16	at Connecticut	3:30 p.m.	ABC
Fri.	21	LOS ANGELES	7:30 p.m.	JOEtv/CBS Sports Network
Sun.	23	INDIANA	4 p.m.	JOEtv
Tue.	25	at Las Vegas	7 p.m.	Twitter
Fri.	28	CHICAGO	7 p.m.	JOEtv/NBA TV
Sun.	30	PHOENIX	4 p.m.	JOEtv
JULY				
Wed.	3	NEW YORK	Noon	JOEtv
Fri.	5	ATLANTA	7 p.m.	JOEtv
Fri.	12	DALLAS	7 p.m.	JOEtv/CBS Sports Network
Sun.	14	NEW YORK	4 p.m.	JOEtv
Wed.	17	at Minnesota	7 p.m.	NBA TV
Fri.	19	LAS VEGAS	7 p.m.	JOEtv/NBA TV
Tue.	23	At Las Vegas	7 p.m.	ESPN2
AUG.				
Fri.	2	WASHINGTON	7 p.m.	JOEtv/NBA TV
Sun.	4	at Los Angeles	2 p.m.	NBA TV
Thu.	8	DALLAS	7 p.m.	JOEtv/NBA TV
Sun.	11	at New York	3 p.m.	
Wed.	14	at Washington	8 p.m.	CBS Sports Network
Fri.	16	at Connecticut	7:30 p.m.	
Sun.	18	MINNESOTA	4 p.m.	JOEtv
Sun.	25	INDIANA	4 p.m.	JOEtv
Tue.	27	CONNECTICUT	7 p.m.	JOEtv/Twitter
SEPT.				
Sun.	1	ATLANTA	4 p.m.	JOEtv/NBA TV
Tue.	3	at Phoenix	7 p.m.	ESPN2
Thu.	5	at Los Angeles	7:30 p.m.	CBS Sports Network
Sun.	8	at Dallas	3 p.m.	

BASKETBALL OPERATIONS STAFF

Head Coach.....Dan Hughes (Muskingum College '77)
 Asst Coach.....Gary Kloppenburg (UC San Diego '81)
 Asst Coach.....Noelle Quinn (UCLA '07)
 Player Development.....Ryan Webb (Seattle '07)
 Asst GM.....Talisa Rhea (Seattle U '12)
 Analytics & Video.....Perry Huang (Fresno Pacific '09)
 Athletic Trainer.....Todd Champlin (Daemen College '82)
 Team Doctor.....Dr. Adam Pourcho (Michigan State)
 Team Doctor.....Dr. Jeff Cary (Colorado)
 Physical Therapist.....Abby Gordon (Connecticut '07)
 Chiropractor.....Dana McCracken (Hawaii-Hilo)
 Nutritionist.....Susan Kleiner (Hiram College '79)
 Massage Therapist.....Erica Nash (Barnard College '99)
 Sports Performance.....Susan Borchardt (Stanford '05)
 Sports Performance.....Emily Blurton (Alaska-Fairbanks '12)

PRONUNCIATION GUIDE

Kaleena Mosqueda-Lewis (kuh-LEEN-uh)
 Anriel Howard (ANN-ree-el)

2019 TRANSACTIONS

May 23... Waived G Presley Hudson, G Macy Miller and G Reece' Caldwell
 May 16... Waived F Zykeria Rice
 May 11... Waived G Brooke Salas
 May 1... Announced the signing of G Brooke Salas to training camp contract
 April 18... Announced the signing of F Zykeria Rice, G Presley Hudson, G Reece' Caldwell to training camp contracts
 April 11... Signed free agent G Shavonte Zellous
 April 10... Drafted F Ezi Magbegor (12th overall), F Anriel Howard (24th overall), Macy Miller (36th overall)
 February 21... Announced the signing of Noelle Quinn as an assistant coach
 February 7... Announced the signing of F Teana Muldrow to training camp contract
 February 1... Re-signed F Crystal Langhorne and C Mercedes Russell

2019 SEASON SOCIAL MEDIA ROSTER

NO	PLAYER	TWITTER	INSTAGRAM	WEBSITE
10	Sue Bird	@S10Bird	sbird10	suebirdonline.com
21	Jordin Canada	@jaecee3	jaecean	
32	Alysha Clark	@alyshaclark	alyshaclark	alyshaclark.com
5	Anriel Howard	@lashe5_	lashe5	
6	Natasha Howard			
1	Crystal Langhorne	@crystalanghorne	crystalanghorne	
24	Jewell Loyd	@jewellloyd	jewellloyd	jewellloyd.com
23	Kaleena Mosqueda-Lewis	@Kaleena_23	kaleena23	
3	Courtney Paris	@courtney_paris	courtneyparis3	
2	Mercedes Russell	@MerSladezz	mersladezz	
33	Sami Whitcomb	@SamBam32		
11	Shavonte Zellous	@SZellous1	szellous1	shavontezellous.com
	Dan Hughes			
	Gary Kloppenburg	@CoachKlop		
	Ryan Webb	@RyanWebb54		
	Noelle Quinn	@IAmSoLA45		
	Seattle Storm Official	@seattlestorm	seattlestorm	stormbasketball.com



TONIGHT'S OPPONENT

ATLANTA DREAM (regular season only)



Storm All-Time Record vs. Atlanta: 12-14
 Storm All-Time Home Record vs. Atlanta: 9-4
 Storm All-Time Road Record vs. Atlanta: 3-10
 Current Streak: 2 Dream wins
 Current Streak at Home: 1 Dream Win
 Current Streak on the Road: 1 Dream Win

Largest Storm Win: 20 points, 88-68 (8/7/14)
 Largest Dream Win: 29 points, 92-63 (8/13/11)

Longest Storm Win Streak: 6 games (8/29/09-9/16/10)
 Longest Dream Win Streak: 4 games (8/7/11-9/11/12)

MATCHUP NOTES

- The Storm finished 1-2 last year vs. the Atlanta Dream, with its only win coming on the road. All three meetings occurred prior to the 2018 WNBA All-Star break.
- Like the Storm, the Dream secured a double-bye in the 2018 playoffs as the No. 2 overall seed. Atlanta came within one game of its first trip to the WNBA Finals since 2013, but ultimately fell short in a winner-take-all Game 5 against the Washington Mystics.
- In her first season at the helm of the Dream, head coach Nicki Collen led Atlanta to an 11-win improvement. Similarly, Dan Hughes helped the Storm to an 11-win improvement in 2018, his first year as head coach of the Storm.
- The Dream remain without Angel McCoughtry, who suffered a season-ending knee injury on Aug. 7. At that time, she ranked 15th in scoring (16.5 PPG) and was averaging a career-high 6.0 rebounds per game. The Dream managed to finish the regular season 4-1 despite missing McCoughtry.
- Last season, the Dream shot a league-best 47.6 percent from the field in clutch time (defined as the last five minutes of the fourth quarter/OT with score within five points). Atlanta was 9-0 in games decided by five points last year.
- 2018 WNBA All-Star Jewell Loyd is coming off a season in which she led the league averaging 4.1 points per game off opponents' turnovers. Atlanta's Tiffany Hayes was tied for second on the list, scoring 3.8 points per game off turnovers.

STRENGTH vs. STRENGTH (2018 RANKS)

	SEA OFFENSE	ATL DEFENSE
PPG	87.2 (2nd)	79.6 (3rd)
FG pct	46.8% (1st)	42.4% (1st)
3-pt FG pct	37.6% (1st)	32.5% (2nd)
Efficiency	108.5 (2nd)	97.6 (1st)

- This matchup will pit a high-powered offense against a lockdown defense. Seattle's offense and Atlanta's defense ranked among the top three in the league in scoring, shooting and efficiency.

- Jessica Breland was named to the All-Defensive First Team in 2018 for the first time in her WNBA career. She was the third-leading shot blocker in the league behind Brittney Griner and Natasha Howard. Breland's Dream teammate Elizabeth Williams ranked fourth in the WNBA with 1.8 blocks per game.

SCOUTING THE STORM'S NEXT OPPONENT

- After playing in Atlanta, the Storm heads to Chicago to face the Sky in the second night of a back-to-back. The Storm is 26-33 all time in the second game of back-to-backs.
- The Storm also played a back-to-back on the road last year, going 2-0 on Aug. 6-7, 2018 at New York and Indiana. Seattle's 15-point win at Indiana was the second-largest road win on zero days of rest in franchise history.
- Seattle swept the 2018 regular-season series with Chicago, 3-0, which included an overtime win on 5/25/18 at KeyArena. The Storm has won six of its last seven games against the Sky.
- Jewell Loyd, an Illinois native, averaged 22.7 points, 7.7 rebounds and 5.3 assists in three games vs. Chicago last season.
- Courtney Vandersloot averaged a WNBA single-season record 8.6 assists per game last year. It marked the second straight season she had led the league in assists. Seattle's Sue Bird ranked second in the league with a career-high 7.1 dimes per game.

2019 HEAD-TO-HEAD WIN GRID

	ATL	CHI	CON	DAL	IND	LAS	LAV	MIN	NYL	PHO	WAS
WIN										1	
LOSS								1			



LAST TIME OUT

Minnesota 72, Seattle 61 - Target Center (5/29/19)

Despite a solid second half from Natasha Howard, the Storm couldn't overcome a sluggish start against the Minnesota Lynx, falling in its first road contest of the 2019 campaign, 72-61. With both teams missing stars from their respective 2017 and 2018 WNBA title runs, Lynx guard Odyssey Sims led her new team with 15 points and five assists, while Seattle's Natasha Howard tallied a game-high 18 points, including 14 points in the paint. Sylvia Fowles, the 2017 WNBA MVP and Finals MVP, led the efforts on the glass with 13 rebounds, finishing three points shy of a double-double. Relinquishing an early 4-2 lead, Seattle entered the second frame down by 13 points. Jewell Loyd put together a particularly strong second quarter for the Storm with eight points on 4-of-8 shooting. Yet after 20 minutes of action, the Storm had tallied just 24 points on 30.3% (10-33) shooting, marking its fewest points in either half since Sept. 13, 2015 (24 points in the second half vs. San Antonio). Though at one point trailing by as many as 20 points, the Storm was able to finish within 11 points of Minnesota thanks to a strong effort from Natasha Howard, who poured in 14 points (6-9 FG) in the second half.

May 29, 2019	SCORE	HI SCORER	HI REBOUND	HI ASSISTS	FG%	FT%	REB (O-D-T)
Seattle	61	N. Howard, 18	N. Howard, 5 J. Loyd, 5 Fowles, 13	Canada, 4	24-66 (36.4)	11-14 (78.6)	8-14-22
@ Minnesota	72	Sims, 15		Sims, 5	27-61 (44.3)	12-15 (80.0)	11-29-40

PREVIOUS GAME

Seattle 77, Phoenix 68 - Angel of the Winds Arena (5/25/19)

The Seattle Storm, playing its first regular-season game at Angel of the Winds Arena in front of a sellout crowd of 8,500, tipped off its 20th season in franchise history with a 77-68 win against the Phoenix Mercury. With three of its 2018 Finals starters sidelined, the Storm began the game with Kaleena Mosqueda-Lewis, Crystal Langhorne, Natasha Howard, Jewell Loyd and Jordin Canada on the floor - a quintet that had shared the court for all of four minutes in 2018. Phoenix, without WNBA all-time scoring leader Diana Taurasi, capitalized early on Storm mistakes, converting eight turnovers into eight points in the first 10 minutes of play. Facing an 11-point deficit at the 7:37 mark of the 2nd quarter, the Storm went on a 14-3 run to enter halftime tied, 32-32. After making just 34 percent of its field goal attempts in the first half, the Storm shot 50 percent the rest of the way. Jewell Loyd delivered a three-pointer in the third quarter (8:19) to give the Storm its first lead (34-37) since the 5:50 mark of the first quarter. Phoenix's DeWanna Bonner scored 15 straight points for the Mercury to bring the game within two points, but the Storm never relinquished the lead. With 40.5 seconds left in the game, Howard recorded her 16th rebound, surpassing her previous career high of 15 set on June 10 vs. Atlanta last season. Jordin Canada also recorded a personal best with 16 points. With the win, the Storm improved to 10-10 all-time in season openers and 12-8 in home openers.

May 25, 2019	SCORE	HI SCORER	HI REBOUND	HI ASSISTS	FG%	FT%	REB (O-D-T)
Phoenix	68	Bonner, 31	Bonner, 8 Griner, 8	Bonner, 4 Y. Turner, 4	27-61 (44.3)	8-8 (100)	6-23-29
@ Seattle	77	Howard, 21	Howard, 16	Canada, 6	28-67 (41.8)	15-23 (65.2)	13-23-36

2018 RESULTS vs ATLANTA

Atlanta 87, Seattle 74 - McCamish Pavilion (7/22/18)

The Seattle Storm dropped its first road game in nearly a month, falling 87-74 to the Atlanta Dream in a Sunday afternoon matinee. Storm veteran Sue Bird played in her 500th-career game, breaking DeLisha Milton-Jones' previous record (499) for the most games played in WNBA history. Breanna Stewart posted 31 points for Seattle in the loss, marking her third 30-plus point game in the last four contests. Elizabeth Williams led the way for the Dream with 17 points and nine rebounds. After battling a small deficit the majority of the first two periods, Seattle went scoreless the final three minutes of the first half, allowing Atlanta to take a 13-point lead into the break at 47-34. Seattle began to chip away in the third and cut the Dream lead to just eight before Atlanta extended its lead back to 12 at the end of the third at 70-58. The Storm could not put together any sort of run in the final period, ultimately leading to the seventh-straight victory for the Dream.

July 22, 2018	SCORE	HI SCORER	HI REBOUND	HI ASSISTS	FG%	FT%	REB (O-D-T)
Seattle	74	Stewart, 31	Stewart, 8	Bird, 6	29-71 (40.8)	7-9 (77.8)	9-26-35
@ Atlanta	87	Williams, 17	Williams, 8 Breland, 8	Hayes, 5	35-71 (49.3)	15-23 (65.2)	13-28-41

Atlanta 67, Seattle 64 - KeyArena (6/10/18)

The Seattle Storm dropped the first of five straight games at home as they fell to the Atlanta Dream by a final score of 67-64. Natasha Howard led the way for Seattle with 15 points and a career-high 15 rebounds. Jewell Loyd chipped in 14 points and eight rebounds for the Storm as well. After battling from behind for the majority of the game, Seattle cut the lead to just two points at 43-41 with 4:05 left in the third period. Atlanta then went on an 11-2 run to extend its lead to nine points entering the fourth quarter. A 10-0 run from the Storm trimmed the lead to just two points at 58-56 with 4:34 remaining in the game. Both teams traded buckets for the next minute until a Loyd three-pointer gave Seattle its first lead since of the second half at 61-60. Atlanta answered Loyd's three with a 6-0 run to reclaim the lead at 66-61 with 31 seconds remaining. Breanna Stewart then converted on a bucket plus the foul with 24 seconds left to cut the lead back to two points at 66-64. The Storm fouled Damiris Dantas at the 19-second mark and she split the pair, giving Seattle the ball down three with a chance to tie the game. Seattle was unable to convert in the final moments, eventually falling by three.

June 10, 2018	SCORE	HI SCORER	HI REBOUND	HI ASSISTS	FG%	FT%	REB (O-D-T)
Atlanta	67	Hayes 23	Breland, 14	4 with 2	28-69 (40.6)	8-11 (72.7)	7-29-36
@ Seattle	64	Howard, 15	Howard, 15	Bird, 3	25-74 (33.8)	10-17 (58.8)	15-29-44

Seattle 95, Atlanta 86 - McCamish Pavilion (7/6/18)

The Seattle Storm concluded its road trip by defeating the Atlanta Dream, 95-86, to extend its winning streak to four games and improve to 14-5 on the season. Breanna Stewart led the way for Seattle, netting 29 points to go along with nine rebounds. Sue Bird tallied her 26th-career double posting 18 points and 10 assists. Bird's performance marked a season-high in points as well as her sixth-straight game with nine assists or more. The Storm rattled off a 14-0 run near the end of the second period to take a 19-point lead into the third quarter. Alysha Clark (11), Stewart (15) and Bird (10) all posted double-digit points in the first half. Atlanta was able to get the offense going in the third quarter, at one point cut the lead to six points late in the third period. Kaleena Mosqueda-Lewis knocked down a big three-pointer to close out the third to extend the Storm lead back to nine entering the fourth. The Storm and Dream went back and forth for the opening five minutes of the period, with the Seattle lead hovering around 10 points. A 5-0 Storm run extended the lead to 15 with around four minutes left in the third, putting the game out of reach. Atlanta cut the lead to 10 multiple times in the final minutes but couldn't foster a comeback.

July 6, 2018	SCORE	HI SCORER	HI REBOUND	HI ASSISTS	FG%	FT%	REB (O-D-T)
Seattle	95	Stewart, 29	Howard, 11	Bird, 10	36-70 (51.4)	14-21 (66.7)	7-30-37
@ Atlanta	86	McCoughtry, 26	Sykes, 6	Dantas, 5	28-73 (38.4)	20-24 (83.3)	6-24-30



NOTES

BIRD: FLYIN' UP THE RECORD BOOKS

THE ALL-TIME BEST DISHIN' THE ROCK

At age 38, Sue Bird is the WNBA's all-time assist leader with 2,831 dimes. She passed Ticha Penicheiro (2,599) on Sept. 1, 2017 at Washington and averaged a career-best 7.1 assists per game last season, finishing second in the WNBA. Since 2016, Bird has tallied more assists (616) than she did in her first three years in the league (596).

RK.	NAME	ASSISTS
1	Sue Bird (SEA)	2,831
2	Ticha Penicheiro (Ret.)	2,599
3	Lindsay Whalen (Ret.)	2,348
4	Diana Taurasi (PHO)	1,835
5	Becky Hammon (Ret.)	1,708

No. 7 AND COUNTING

In Seattle's victory over Washington on July 8, 2018, Sue Bird moved past Lauren Jackson to become number seven all-time in WNBA history for points as well as becoming the all-time leading scorer in Seattle Storm history. Bird has 6,154 career points, the eighth player in WNBA history to eclipse the 6,000-point mark.

RK.	NAME	POINTS
5	Katie Smith (Ret.)	6,452
6	Lisa Leslie (Ret.)	6,253
7	Sue Bird (SEA)	6,154
8	Candice Dupree	6,057
9	Lauren Jackson (Ret.)	6,007

SEATTLE'S FG QUEEN

With three made field goals at Los Angeles on July 25, 2017, Bird became the Storm's all-time leader in field goals made with 2,091, passing Lauren Jackson (2,090). Not only did Bird pass Jackson in the franchise rankings, she also passed the Aussie on the WNBA's all-time rankings, moving to No. 8, now with 2,247 buckets.

RK.	NAME	FG
4	Candice Dupree	2,478
5	Cappie Pondexter (Ret.)	2,446
6	Lisa Leslie (Ret.)	2,332
7	Seimone Augustus (MIN)	2,381
8	Sue Bird (SEA)	2,247

SHE'S A THIEF!

Entering her 17th active season in the WNBA, Sue Bird is fifth in career steals with 652. She enters the 2019 campaign six steals shy of passing Sheryl Swoopes for sole possession of fourth place.

RK.	NAME	STEALS
1	Tamika Catchings (Ret.)	1,074
2	Ticha Penicheiro (Ret.)	764
3	Alana Beard (LAS)	698
4	Sheryl Swoopes (Ret.)	657
5	Sue Bird (SEA)	652

FIRST TO 500

Bird played her 500th career game against Atlanta on July 22, 2018 to become the all-time leader in WNBA history in games played, passing Delisha Milton-Jones. Bird has started all 508 games in which she has appeared. She is also the all-time leader in minutes played, clocking in at 16,171.

RK.	NAME	GAMES
1	Sue Bird (SEA)	508
2	Delisha Milton-Jones (Ret.)	499
3	Tina Thompson (Ret.)	496
4	Katie Smith (Ret.)	482
5	Swin Cash (Ret.)	279

NBA CROSSOVER

Excluding the 2013 season that she missed due to injury, Sue Bird has appeared in 93% of possible regular-season games since entering the WNBA, playing just under 80% of possible minutes. Those participation rates over an 82-game season with 48-minute games would equate to more than 17,000 points and 8,000 assists over 16 seasons. There are only nine NBA players ever to reach those numbers: Isiah Thomas, John Stockton, Oscar Robertson, Gary Payton, Steve Nash, Jason Kidd, Magic Johnson, LeBron James and Chris Paul.

DEEP BALL SPECIALIST

Bird hit her 800th career three-pointer against the Las Vegas Aces on May 27, 2018 and currently sits No. 3 on the WNBA all-time three-pointers made list.

RK.	NAME	3-PT FG
1	Diana Taurasi (PHO)	1,102
2	Katie Smith	906
3	Sue Bird (SEA)	852

LIVING LEGEND

Drafted No. 1 overall by the Storm in 2002, Sue Bird has spent her entire WNBA career in Seattle, winning her third WNBA championship in 2018 at the age of 37. Bird, the oldest active player in the WNBA, is part of a group of notable figures to win a championship with their original franchise at age 37, joining Tim Duncan (Spurs, 2014 NBA Championship), Yogi Berra (Yankees, 1963 World Series), Jean Beliveau (Canadiens, 1971 Stanley Cup Final) and Tom Brady (Patriots, Super Bowls XLIX, LI & LIII). *NOTE: This is not a complete list, just notable names.

A TRUE SPORT

Following the 2018 regular season, Sue Bird was awarded the 2018 Kim Perrot Sportsmanship award. The award is presented each season to a player who exemplifies the ideals of sportsmanship on the court, including ethical behavior, fair play and integrity. This was the third time that Bird has received such honor, who also received the award in 2017 and shared the accolade with Ruth Riley in 2011.

HEY NOW, ALL STAR

Sue Bird earned her 11th All-Star nod in 2018, breaking a tie with Tamika Catchings for the most All-Star selections in WNBA history. The year prior, Bird set the WNBA All-Star game record with 11 assists in front of a crowd of over 15,000 at KeyArena.

Bird was joined at the 2018 WNBA All-Star Game by Storm teammates Breanna Stewart and Jewell Loyd, as well as head coach Dan Hughes. Team Parker defeated Team Delle Donne by a final margin of 119-112. Stewart posted 10 points and five rebounds and Bird notched five points and eight assists as starters for Team Delle Donne. Loyd chipped in 12 points and four assists off the bench for Team Parker.



STEWIE: BY THE NUMBERS

Last season, Breanna Stewart added both the 2018 WNBA regular-season MVP and 2018 WNBA Finals MVP awards to her already cluttered trophy shelf. She is the six player in WNBA history to win both awards in the same season, and the first Storm player since Lauren Jackson did so in 2010. Both Stewart and Jackson earned their first MVP awards in their third WNBA seasons.

The Storm will be without Stewart for the 2019 season due to an Achilles injury. Stewart missed just one game in her first three seasons with the Storm: the 2017 season opener at Los Angeles, a 78-68 loss to the Sparks. She had started the last 67 consecutive games for Seattle, just two shy of fifth-most consecutive starts in franchise history.

BREANNA STEWART IN 2018

		WNBA RANK
PPG	21.8	2nd
Win shares	7.8	1st
RPG	8.4	3rd
Blocks PG	1.4	7th

BACK-TO-BACK

The Storm embarks on a road back-to-back series at Atlanta and Chicago (5/31-6/1). The Storm also played a back-to-back on the road last year, going 2-0 on Aug. 6-7, 2018 at New York and Indiana. Seattle's 15-point win at Indiana was the second-largest road win on zero days of rest in franchise history.

WELCOME, SHAVONTE

Seattle added a veteran presence to the squad, signing Shavonte Zellous as a free agent in April. Over 10 seasons in the WNBA, Zellous has averaged 9.4 points, 2.8 rebounds and 2.0 assists, helping her teams reach the playoffs nine times. The 2013 WNBA Most Improved Player averaged 8.2 points and 3.0 assists in 22 games before suffering a season-ending ankle injury with the New York Liberty last season.

THREE-PEAT

USA Basketball has presented its Female Athlete of the Year award annually since 1980. In December, Breanna Stewart joined Diana Taurasi (4), Teresa Edwards (4) and Lisa Leslie (3) as the only players to receive the honor on at least three occasions. Stewart previously earned the distinction in 2011 and 2013.

HAPPY 20th!

Seattle is one of two franchises celebrating its 20th season in the WNBA, joined by the Indiana Fever. The Storm played its very first game on May 31, 2000 – a 76-60 loss at the Sacramento Monarchs. The now-defunct Portland Fire and Miami Sol also debuted in 2000.

ROAD WARRIORS

The Storm plays just two of its first nine games in the Pacific Northwest. After opening the season at home, Seattle visits Minnesota, Atlanta and Chicago before returning home for one game on June 4. The Storm then heads back to Chicago to start a four-game trip which also includes visits to Indiana, Washington and Connecticut. All said, Seattle will log just shy of 10,000 miles over an eight-game, 23-day stretch.

HUGHES COACHING TREE

Seattle Storm head coach Dan Hughes will go up against four of his former assistant coaches this season. His extensive WNBA head coaching tree includes: Chicago's James Wade, Minnesota's Cheryl Reeve, Dallas' Brian Agler, and Phoenix's Sandy Brondello, whom he also drafted. While the head coach of the San Antonio Stars, Hughes coached Becky Hammon, an assistant coach on Greg Popovich's San Antonio Spurs staff.

NO BIRD, NO STEWIE

The Storm began the 2019 season without Breanna Stewart or Sue Bird for the second time in four years together. In 2017, the Storm lost its season opener in Los Angeles, 78-68.

HELPING OUT

Last year, Sue Bird's passes to Breanna Stewart resulted in 214 points, the highest total of assisted points by any teammates in a single season in WNBA history (per the Elias Sports Bureau).

EYEING GOLD

Shortly after winning the 2018 WNBA Finals, Storm head coach Dan Hughes, Jewell Loyd, Sue Bird and Breanna Stewart joined the USA Women's Basketball Team in Tenerife, Spain for the 2018 FIBA Women's World Cup. Stewart garnered MVP honors for the gold medal-winning squad, starting all six games and Apacing the team with 26.8 minutes and 16.3 points per game, as well as a 58.0 field goal percentage. With the win, the USA earned an automatic berth in the Tokyo 2020 Games.

CLARK vs WHITCOMB

Alysha Clark (Lyon) defeated Storm teammate Sami Whitcomb (BLMA) in a winner-take-all Game 5 to decide the French League championship on Thursday, May 23. Both immediately returned to Seattle for the Storm's ring ceremony and season opener on Saturday, May 25. In 32 French League games, Whitcomb averaged 13.2 points, 5.5 rebounds and 3.3 assists per game, and attempted a whopping 256 shots from beyond the arc. Clark, in 27 French League games, averaged 12.9 points, 6.6 rebounds and 3.1 assists per game while shooting 52.1% from the field. Clark's team is owned by NBA legend Tony Parker.

AUSSIE ATTRACTION

With the No. 12 pick in the 2019 WNBA Draft, the Seattle Storm selected 19-year old Australian Eziyoda "Ezi" Magbegor. The 6-foot-4 forward logged 10 minutes for the Australian Opals in the 2018 FIBA Women's World Cup championship game against the United States, collecting six points and four rebounds while facing Sue Bird, Jewell Loyd and Breanna Stewart. As planned, Magbegor will continue to develop her game in Australia this season and report to the Storm in 2020.

MOST IMPROVED PLAYER

In her first season as a member of the Seattle Storm, Natasha Howard more than tripled her scoring average, as it rose from 4.3 to 13.2 points per game year over year. She also set career bests in rebounding (4.1), blocks (2.0) and field goal percentage (54.7). After playing a total of 39 minutes in the 2017 playoffs with the Minnesota Lynx, Howard started all eight playoffs games for the Storm en route to her second straight WNBA championship.

5 TEAMS, 10 CHAMPIONSHIPS

Including Seattle's two most recent championships 2010 and 2018, the first four home games of the Storm's 2019 campaign will feature the five teams that have combined to win the last 10 WNBA titles: Phoenix (2009 and 2014), Minnesota (2011, 2013, 2015, 2017), Los Angeles (2016) and Indiana (2014).

REPEAT READY

The Storm is seeking to become the first WNBA team to win back-to-back championships since the Los Angeles Sparks won its second title in 2002. The Houston is the only other WNBA franchise to win championships in consecutive years, as the Comets took home the first four trophies in league history behind four-time Finals MVP Cynthia Cooper.

ON THE REBOUND

After dropping its road opener on 5/29 against Minnesota, the Storm seeks to avoid consecutive losses for the first time since 2017 - a three-game losing streak that began with an 89-83 loss in Atlanta.



2019 SEATTLE STATISTICS

Through May 29 (1-1)

SEATTLE STORM

2019 REGULAR SEASON STATISTICS

PLAYER	G	GS	MIN	-FIELD GOALS-			-3-POINT FG--			-FREE THROWS-			--REBOUNDS--			PF	DQ	STL	TO	BLK	PTS	AVG
				FG	FGA	PCT	FG	FGA	PCT	FT	FTA	PCT	OFF	DEF	TOT							
N. Howard	2	2	65	16	34	.471	1	5	.200	6	12	.500	9	12	21	1	7	0	6	3	39	19.5
Loyd	2	2	69	9	31	.290	2	8	.250	10	10	1.000	2	6	8	6	4	0	4	1	30	15.0
Canada	2	2	62	9	21	.429	0	3	.000	5	8	.625	1	4	5	10	5	0	5	8	23	11.5
Langhorne	2	2	56	6	15	.400	0	3	.000	5	6	.833	3	4	7	1	3	0	1	1	17	8.5
Mosqueda-Lewis	2	2	38	5	10	.500	2	5	.400	0	0	---	1	4	5	2	4	0	2	4	12	6.0
Whitcomb	2	0	27	3	8	.375	2	7	.286	0	0	---	0	1	1	3	4	0	2	0	8	4.0
A. Howard	1	0	10	1	2	.500	1	1	1.000	0	0	---	1	0	1	0	3	0	1	2	3	3.0
Russell	2	0	31	2	4	.500	0	0	---	0	0	---	3	4	7	0	6	0	2	3	4	2.0
Zellous	2	0	35	1	8	.125	0	2	.000	0	1	.000	0	1	1	5	5	0	0	4	2	1.0
Paris	1	0	7	0	0	---	0	0	---	0	0	---	1	1	2	0	1	0	0	1	0	0.0
STORM	2	-	400	52	133	.391	8	34	.235	26	37	.703	21	37	58	28	42	0	22	30	138	69.0
OPPONENTS	2	-	400	54	122	.443	12	34	.353	20	23	.870	17	52	69	38	39	0	15	42	140	70.0

PLAYER	-- SINGLE-GAME HIGHS --							AVERAGE PER GAME							-CAREER HIGHS (C=SET, T=TIED THIS SEASON)-						
	MIN	REB	AST	ST	TO	BL	PTS	MIN	REB	AST	STL	TO	BLK	PTS	FG	FGA	FT	FTA	REB	AST	PTS
N. Howard	36	16	1	5	2	3	21	32.7	10.5	0.5	3.00	1.5	1.50	19.5	10	19C	7	9C	16C	4	25
Loyd	36	5	4	4	4	1	17	34.4	4.0	3.0	2.00	2.0	0.50	15.0	12	22	14	16	10	10	33
Canada	34	3	6	3	7	1	16	31.0	2.5	5.0	2.50	4.0	0.50	11.5	7C	13C	6	7	5	9	16C
Langhorne	32	6	1	0	1	1	10	28.1	3.5	0.5	0.00	0.5	0.50	8.5	13	24	9	13	16	5	31
Mosqueda-Lewis	19	3	2	1	2	0	8	18.9	2.5	1.0	1.00	2.0	0.00	6.0	8	23	6	6	4	4	19
Whitcomb	17	1	3	2	0	0	5	13.5	0.5	1.5	1.00	0.0	0.00	4.0	6	11	4	4	6	4	22
A. Howard	10	1	0	1	2	0	3	10.1	1.0	0.0	1.00	2.0	0.00	3.0	1C	2C	0C	0C	1C	0C	3C
Russell	20	4	0	1	2	0	4	15.7	3.5	0.0	1.00	1.5	0.00	2.0	4	8	3	4	9	2	8
Zellous	21	1	3	0	3	0	2	17.3	0.5	2.5	0.00	2.0	0.00	1.0	12	20	17	19	11	9	33
Paris	7	2	0	0	0	1	0	6.9	2.0	0.0	0.00	0.0	1.00	0.0	9	15	4	8	19	4	22
STORM	200	36	15	12	16	4	77	200.0	29.0	14.0	11.00	15.0	3.50	69.0	41	100	33	43	57	34	111
OPPONENTS	200	40	22	9	22	3	72	200.0	34.5	19.0	7.50	21.0	3.00	70.0	41	98	38	55	50	30	110

2019 ATLANTA STATISTICS

Through May 29 (1-0)

ATLANTA DREAM

2019 REGULAR SEASON STATISTICS

PLAYER	G	GS	MIN	-FIELD GOALS-			-3-POINT FG--			-FREE THROWS-			--REBOUNDS--			PF	DQ	STL	TO	BLK	PTS	AVG
				FG	FGA	PCT	FG	FGA	PCT	FT	FTA	PCT	OFF	DEF	TOT							
Breland	1	1	25	6	13	.462	0	0	---	5	7	.714	2	4	6	2	1	0	1	3	17	17.0
Montgomery	1	1	26	5	7	.714	3	4	.750	2	4	.500	0	3	3	3	1	0	3	0	15	15.0
Sykes	1	1	25	3	9	.333	0	1	.000	4	6	.667	1	2	3	4	0	0	1	1	10	10.0
Coffey	1	0	22	3	6	.500	0	2	.000	2	3	.667	1	3	4	1	1	0	1	1	8	8.0
Williams	1	1	27	3	5	.600	0	0	---	1	2	.500	1	5	6	1	2	0	1	2	7	7.0
Gulich	1	0	10	2	2	1.000	0	0	---	2	2	1.000	1	3	4	0	1	0	0	2	6	6.0
Bentley	1	0	22	2	11	.182	1	3	.333	0	0	---	1	2	3	1	1	0	1	2	5	5.0
Hayes	1	1	29	2	8	.250	0	4	.000	1	4	.250	0	1	1	2	4	0	0	0	5	5.0
Billings	1	0	14	1	2	.500	0	0	---	1	1	1.000	1	0	1	2	2	0	1	3	3	3.0
DREAM	1	-	200	27	63	.429	4	14	.286	18	29	.621	8	23	31	16	13	0	6	16	76	76.0
OPPONENTS	1	-	200	26	74	.351	8	24	.333	12	16	.750	17	25	42	18	31	0	12	18	72	72.0

PLAYER	-- SINGLE-GAME HIGHS --							AVERAGE PER GAME							-CAREER HIGHS (C=SET, T=TIED THIS SEASON)-						
	MIN	REB	AST	ST	TO	BL	PTS	MIN	REB	AST	STL	TO	BLK	PTS	FG	FGA	FT	FTA	REB	AST	PTS
Breland	25	6	2	1	1	3	17	25.5	6.0	2.0	1.00	1.0	3.00	17.0	12	21	7	8	15	7	26
Montgomery	26	3	3	0	3	0	15	26.3	3.0	3.0	0.00	3.0	0.00	15.0	13	29	11	12	7	10	33
Sykes	25	3	4	1	1	3	10	24.7	3.0	4.0	1.00	1.0	3.00	10.0	12	23	12	13	13	7	33
Coffey	22	4	1	1	1	1	8	22.3	4.0	1.0	1.00	1.0	1.00	8.0	8	14	7	10	12	6	23
Williams	27	6	1	1	2	4	7	26.6	6.0	1.0	1.00	2.0	4.00	7.0	11	16	7	10	16	6	22
Gulich	10	4	0	0	2	0	6	10.4	4.0	0.0	0.00	2.0	0.00	6.0	3	5	2T	2T	4T	1	6T
Bentley	22	3	1	1	2	0	5	21.6	3.0	1.0	1.00	2.0	0.00	5.0	12	24	7	8	6	11	31
Hayes	29	1	2	0	0	0	5	28.6	1.0	2.0	0.00	0.0	0.00	5.0	11	19	14	15	11	8	32
Billings	14	1	2	1	3	0	3	14.2	1.0	2.0	1.00	3.0	0.00	3.0	4	6	4	4	6	2T	10
DREAM	200	31	16	6	16	11	76	200.0	31.0	16.0	6.00	16.0	11.00	76.0	45	96	36	49	54	32	109
OPPONENTS	200	42	18	12	18	6	72	200.0	42.0	18.0	12.00	18.0	6.00	72.0	45	103	40	44	63	30	112



2019 QUARTER-BY-QUARTER SCORING

DATE	OPPONENT	1Q	2Q	FIRST HALF	3Q	4Q	SECOND HALF	OT	TOTAL
5/25	PHOENIX	7-16 (16)	5-19 (16)	12-35 (32)	9-16 (24)	7-16 (21)	16-32 (45)		28-67 (77)
5/29	@ Minnesota	4-16 (9)	6-17 (15)	10-33 (24)	7-17 (20)	7-16 (17)	14-33 (37)		24-66 (61)
5/31	@ Atlanta								
6/1	@ Chicago								
6/4	MINNESOTA								
6/9	@ Chicago								
6/11	@ Indiana								
6/14	@ Washington								
6/16	@ Connecticut								
6/21	LOS ANGELES								
6/23	INDIANA								
6/25	@ Las Vegas								
6/28	CHICAGO								
6/30	PHOENIX								
7/3	NEW YORK								
7/5	ATLANTA								
7/12	DALLAS								
7/14	NEW YORK								
7/17	@ Minnesota								
7/19	LAS VEGAS								
7/23	@ Las Vegas								
8/2	WASHINGTON								
8/4	@ Los Angeles								
8/8	DALLAS								
8/11	@ New York								
8/14	@ Washington								
8/16	@ Connecticut								
8/18	MINNESOTA								
8/25	INDIANA								
8/27	CONNECTICUT								
9/1	ATLANTA								
9/3	@ Phoenix								
9/5	@ Los Angeles								
9/8	@ Dallas								



2019 QUARTER-BY-QUARTER SHOOTING (FG%)

DATE	OPPONENT	1Q	2Q	FIRST HALF	3Q	4Q	SECOND HALF	OT	TOTAL
5/25	PHOENIX	43	26.3	34.3	56.2	43.8	50		41.8
5/29	@ Minnesota	25	35.3	30.3	41.2	43.8	42.5		36.4
5/31	@ Atlanta								
6/1	@ Chicago								
6/4	MINNESOTA								
6/9	@ Chicago								
6/11	@ Indiana								
6/14	@ Washington								
6/16	@ Connecticut								
6/21	LOS ANGELES								
6/23	INDIANA								
6/25	@ Las Vegas								
6/28	CHICAGO								
6/30	PHOENIX								
7/3	NEW YORK								
7/5	ATLANTA								
7/12	DALLAS								
7/14	NEW YORK								
7/17	@ Minnesota								
7/19	LAS VEGAS								
7/23	@ Las Vegas								
8/2	WASHINGTON								
8/4	@ Los Angeles								
8/8	DALLAS								
8/11	@ New York								
8/14	@ Washington								
8/16	@ Connecticut								
8/18	MINNESOTA								
8/25	INDIANA								
8/27	CONNECTICUT								
9/1	ATLANTA								
9/3	@ Phoenix								
9/5	@ Los Angeles								
9/8	@ Dallas								



2019 TEAM BOX SCORE

DATE	OPPONENT	FG-FGA	FG%	3P-3PA	3FG%	FT-FTA	FT%	OR-DR-TOT	AST	PF	ST	TO	BS	PTS
5/25	PHOENIX	28-67	41.8	6-19	31.6	15-23	65.2	13-23-36	15	18	10	16	4	77
5/29	@ Minnesota	24-66	36.4	2-15	13.3	11-14	78.6	8-14-22	13	24	12	14	3	61
5/31	@ Atlanta													
6/1	@ Chicago													
6/4	MINNESOTA													
6/9	@ Chicago													
6/11	@ Indiana													
6/14	@ Washington													
6/16	@ Connecticut													
6/21	LOS ANGELES													
6/23	INDIANA													
6/25	@ Las Vegas													
6/28	CHICAGO													
6/30	PHOENIX													
7/3	NEW YORK													
7/5	ATLANTA													
7/12	DALLAS													
7/14	NEW YORK													
7/17	@ Minnesota													
7/19	LAS VEGAS													
7/23	@ Las Vegas													
8/2	WASHINGTON													
8/4	@ Los Angeles													
8/8	DALLAS													
8/11	@ New York													
8/14	@ Washington													
8/16	@ Connecticut													
8/18	MINNESOTA													
8/25	INDIANA													
8/27	CONNECTICUT													
9/1	ATLANTA													
9/3	@ Phoenix													
9/5	@ Los Angeles													
9/8	@ Dallas													



2019 REGULAR SEASON MISCELLANEOUS STATS

DATE	OPPONENT	PTS IN THE PAINT	SECOND CHANCE PTS	FAST BREAK PTS	BENCH PTS
5/25	PHOENIX	28 (14/31)	20 (6/13)	10 (5/9)	5 (2/9)
5/29	@ Minnesota	30 (15/30)	6 (2/7)	6 (2/6)	12 (5/13)
5/31	@ Atlanta				
6/1	@ Chicago				
6/4	MINNESOTA				
6/9	@ Chicago				
6/11	@ Indiana				
6/14	@ Washington				
6/16	@ Connecticut				
6/21	LOS ANGELES				
6/23	INDIANA				
6/25	@ Las Vegas				
6/28	CHICAGO				
6/30	PHOENIX				
7/3	NEW YORK				
7/5	ATLANTA				
7/12	DALLAS				
7/14	NEW YORK				
7/17	@ Minnesota				
7/19	LAS VEGAS				
7/23	@ Las Vegas				
8/2	WASHINGTON				
8/4	@ Los Angeles				
8/8	DALLAS				
8/11	@ New York				
8/14	@ Washington				
8/16	@ Connecticut				
8/18	MINNESOTA				
8/25	INDIANA				
8/27	CONNECTICUT				
9/1	ATLANTA				
9/3	@ Phoenix				
9/5	@ Los Angeles				
9/8	@ Dallas				



2019 STARTING LINEUPS

GAMES	FORWARD	FORWARD	CENTER	GUARD	GUARD	RECORD
2	K. Mosqueda-Lewis	N. Howard	C. Langhorne	J. Loyd	J. Canada	1-1

2019 GAMES MISSED

PLAYER	REASON	DATES OUT	GAMES #	W-L
Sue Bird	Knee	5/25-5/31	1-2	1-1
Alysha Clark	Rest	5/25-5/31	1-2	1-1

HOW THE 2019 STORM WAS BUILT

DRAFT

Sue Bird (1st pick, 2002)
Jewell Loyd (1st pick, 2015)
Kaleena Mosqueda-Lewis (3rd pick, 2015)
Jordin Canada (5th pick, 2018)
Anriel Howard (24th pick, 2019)

FREE AGENCY

Alysha Clark (5/23/12)
Sami Whitcomb (2/8/17)
Courtney Paris (2/2/18)
Mercedes Russell (5/30/18)
Shavonte Zellous (4/11/19)

TRADE

Crystal Langhorne (from WAS, 4/14/14)
Natasha Howard (from MIN, 2/7/18)

PLAYER MILESTONES

PLAYER	MILESTONE	NEEDED
Sue Bird	200 offensive rebounds	4 offensive rebounds
Sue Bird	900 three-point field goals	45 three-point field goals
Sue Bird	3000 assists	169 assists
Alysha Clark	1500 points	125 points
Alysha Clark	300 assists	46 assists
Alysha Clark	700 rebounds	10 rebounds
Natasha Howard	500 field goals	10 field goals
Natasha Howard	200 blocks	46 blocks
Natasha Howard	1500 points	273 points
Crystal Langhorne	300 starts	4 starts
Crystal Langhorne	2500 rebounds	173 rebounds
Crystal Langhorne	400 assists	5 assists
Jewell Loyd	500 rebounds	Achieved on 5/25/19 vs. PHX
Jewell Loyd	500 assists	70 assists
Jewell Loyd	2500 points	415 points
Kaleena Mosqueda-Lewis	100 defensive rebounds	2 rebounds
Kaleena Mosqueda-Lewis	100 assists	19 assists
Kaleena Mosqueda-Lewis	600 points	15 points
Courtney Paris	1500 points	111 points
Courtney Paris	1000 defensive rebounds	29 rebounds
Jordin Canada	200 points	Achieved on 5/25/19 vs. PHX
Jordin Canada	50 rebounds	Achieved on 5/25/19 vs. PHX
Sami Whitcomb	100 rebounds	13 rebounds



2019 RECORDS WHEN...

QUICK OVERVIEW	RECORD
Overall	1-1
Home	1-0
Road	0-1
vs. Western Conference	1-1
vs. Eastern Conference	

BREAKDOWN	RECORD
vs. teams .500+ (day of game)	0-1
vs. teams sub .500 (day of game)	
Games 1-10	1-1
Games 11-20	
Games 21-34	
Pre All-Star Break	

DAYS OF REST	RECORD
Back-to-back games	
1 day between games	
2 days between games	
3 days between games	0-1
4+ days between games	1-0

BY DAY	RECORD	HOME	ROAD
Monday			
Tuesday			
Wednesday	0-1		0-1
Thursday			
Friday			
Saturday	1-0	1-0	
Sunday			

BY MONTH	RECORD	HOME	ROAD
May	1-1	1-0	0-1
June			
July			
August			
September			

QUARTER SCORING	RECORD
Storm is ahead or tied after 1Q	
Storm is behind after 1Q	1-1
Storm is ahead or tied after 2Q	1-0
Storm is behind after 2Q	0-1
Storm is ahead or tied after 3Q	1-0
Storm is behind after 3Q	0-1
Storm scores 15 or fewer in any Q	0-1
Storm allows 15 or fewer in any Q	1-1
Storm scores 25 or more in any Q	
Storm allows 25 or more in any Q	
Storm scores 50+ in first half	
Storm allows 50 or more in first half	
Storm scores 50+ in the second half	
Storm allows 50+ in second half	

STORM RECORD WHEN	RECORD
Shooting 45%+	
Shooting sub 45%	1-1
Opponents shooting 45%+	
Opponents shooting sub 45%	1-1
Bench outscores opponent bench	1-0
Bench outscored by opponent bench	0-1
Bench scoring is tied	
Tied or more points in the paint	1-0
Fewer points in the paint	0-1
Score 70+ points	1-0
Score sub 70 points	0-1
Score 75+ points	1-0
Score sub 75 points	0-1
Opponent scores 75+ points	
Opponent sub 75 points	1-1
More/tied rebounds than opponent	1-0
Fewer rebounds than opponent	0-1



2019 REGULAR SEASON SUPERLATIVES

STORM TOP SINGLE-GAME PERFORMANCES

<u>Points</u>	<u>Date</u>	<u>Blocks</u>	<u>Date</u>	<u>Free Throws Made</u>	<u>Date</u>
Howard, 21 vs. PHX	5/25/19	Howard, 3 vs. PHX	5/25/19	Loyd, 7 vs. PHX	5/25/19
Howard, 18 @ MIN	5/25/19			Howard, 4 vs. PHX	5/25/19
Loyd, 17 vs. PHX	5/29/19			3 with 3	
Canada, 16 vs. PHX	5/25/19				
Loyd, 13 @ MIN	5/29/19				
<u>Rebounds</u>	<u>Date</u>	<u>Steals</u>	<u>Date</u>	<u>Free Throws Attempted</u>	<u>Date</u>
Howard, 16 vs. PHX	5/25/19	Howard, 5 vs PHX	5/25/19	Howard, 9 vs. PHX	5/25/19
Langhorne, 6 vs. PHX	5/25/19	Loyd, 4 @ MIN	5/29/19	Loyd, 7 vs. PHX	5/25/19
Howard, 5 @ MIN	5/29/19	Canada, 3 vs. PHX	5/25/19	3 with 4	
<u>Assists</u>	<u>Date</u>	<u>Field Goals Made</u>	<u>Date</u>	<u>3-FG Made</u>	<u>Date</u>
Canada, 6 vs. PHX	5/25/19	Howard, 8 vs. PHX	5/25/19	Mosqueda-Lewis, 2 vs. PHX	5/25/19
Loyd, 4 vs. PHX	5/25/19	Howard, 8 @ MIN	5/29/19	Loyd, 2 vs. PHX	5/25/19
Canada, 4 @ MIN	5/29/19	Canada, 7 vs. PHX	5/25/19	4 with 1	
		Loyd, 5 @ MIN	5/29/19		
<u>Turnovers</u>	<u>Date</u>	<u>Field Goals Attempted</u>	<u>Date</u>	<u>3-FG Attempted</u>	<u>Date</u>
Canada, 7 vs. PHX	5/25/19	Loyd, 21 @ MIN	5/29/19	Loyd, 5 @ MIN	5/29/19
Loyd, 4 vs. PHX	5/29/19	Howard, 19 vs. PHX	5/25/19	Mosqueda-Lewis, 4 vs. PHX	5/25/19
5 with 2		Howard, 15 @ MIN	5/29/19	Whitcomb, 4 @ MIN	5/29/19
		Canada, 13 vs. PHX	5/25/19	3 with 3	

OPPONENTS TOP SINGLE-GAME PERFORMANCES

<u>Points</u>	<u>Date</u>	<u>Blocks</u>	<u>Date</u>	<u>Free Throws Made</u>	<u>Date</u>
Bonner, 31 (PHX)	5/25/19	6 with 1		Bonner, 8 (PHX)	5/25/19
Griner, 18 (PHX)	5/25/19			Brown, 3 (MIN)	5/29/19
Sims, 15 (MIN)	5/29/19				
<u>Rebounds</u>	<u>Date</u>	<u>Steals</u>	<u>Date</u>	<u>Free Throws Attempted</u>	<u>Date</u>
Fowles, 13 (MIN)	5/29/19	January, 6 (PHX)	5/25/19	Bonner, 8 (PHX)	5/25/19
Bonner, 8 (PHX)	5/25/19	3 with 2		Brown, 4 (MIN)	5/29/19
Griner, 8 (PHX)	5/25/19				
<u>Assists</u>	<u>Date</u>	<u>Field Goals Made</u>	<u>Date</u>	<u>3-FG Made</u>	<u>Date</u>
Sims, 5 (MIN)	5/29/19	Bonner, 10 (PHX)	5/25/19	Bonner, 3 (PHX)	5/25/19
5 with 4		Griner, 9 (PHX)	5/25/19	Dantas, 2 (MIN)	5/29/19
		Sims, 6 (MIN)	5/29/19		
<u>Turnovers</u>	<u>Date</u>	<u>Field Goals Attempted</u>	<u>Date</u>	<u>3-FG Attempted</u>	<u>Date</u>
Griner, 6 (PHX)	5/25/19	Bonner, 23 (PHX)	5/25/19	Bonner, 8 (PHX)	5/25/19
Robinson, 6 (MIN)	5/29/19	Griner, 19 (PHX)	5/25/19	Robinson, 4 (MIN)	5/29/19
Turner, 5 (PHX)	5/25/19	Sims, 12 (MIN)	5/29/19		
Sims, 5 (MIN)	5/29/19				



2019 REGULAR SEASON SUPERLATIVES

SEATTLE STORM HIGHS

Points, Game.....	77, vs. Phoenix 5/25
Points, First Half.....	32, vs. Phoenix 5/25
Points, Second Half.....	45, vs. Phoenix 5/25
Points, 1Q.....	16, vs. Phoenix 5/25
Points, 2Q.....	16, vs. Phoenix 5/25
Points, 3Q.....	24, vs. Phoenix 5/25
Points, 4Q.....	21 vs. Phoenix 5/25
Points, Overtime.....	--
Field Goals Made.....	28, vs. Phoenix 5/25
Field Goals Att.....	67, vs. Phoenix 5/25
Field Goal Percentage.....	41.8, vs. Phoenix 5/25
3FG Made.....	6, vs. Phoenix 5/25
3FG Att.....	19, vs. Phoenix 5/25
3FG Percentage.....	31.6 vs. Phoenix 5/25
Free Throws Made.....	15, vs. Phoenix 5/25
Free Throws Att.....	23, vs. Phoenix 5/25
FT Percentage.....	78.6, @ Minnesota 5/29
Offensive Rebounds....	13, vs. Phoenix 5/25
Defensive Rebounds...	23, vs. Phoenix 5/25
Total Rebounds.....	36 vs. Phoenix 5/25
Assists.....	15, vs. Phoenix 5/25
Steals.....	12, @ Minnesota 5/29
Turnovers.....	16, vs. Phoenix 5/25
Blocked Shots.....	4, vs. Phoenix 5/25
Personal Fouls.....	24, vs. Phoenix 5/25
Largest lead at any time....	13 vs. Phoenix 5/25
Largest deficit at any time...	18, @ Minnesota 5/29

OPPONENT HIGHS

Points, Game.....	72, @ Minnesota 5/29
Points, First Half.....	39, @ Minnesota 5/29
Points, Second Half.....	36, vs. Phoenix 5/25
Points, 1Q.....	23, vs. Phoenix 5/25
Points, 2Q.....	17, @ Minnesota 5/29
Points, 3Q.....	22 @ Minnesota 5/29
Points, 4Q.....	20, vs. Phoenix 5/25
Points, Overtime.....	---
Field Goals Made.....	27, 2 times, last at Minnesota 5/29
Field Goals Att.....	61, 2 times, last at Minnesota 5/29
Field Goal Percentage.....	44.3, 2 times, last at Minnesota 5/29
3FG Made.....	6, 2 times, last at Minnesota 5/29
3FG Att.....	17, 2 times, last at Minnesota 5/29
3FG Percentage.....	35.3, 2 times, last at Minnesota 5/29
Free Throws Made.....	12, @ Minnesota 5/29
Free Throws Att.....	15, @ Minnesota 5/29
FT Percentage.....	100, vs. Phoenix 5/25
Offensive Rebounds....	11, @ Minnesota 5/29
Defensive Rebounds...	29, @ Minnesota 5/29
Total Rebounds.....	40, @ Minnesota 5/29
Assists.....	22, @ Minnesota 5/29
Steals.....	9, vs. Phoenix 5/25
Turnovers.....	19, @ Minnesota 5/29
Blocked Shots.....	3, 2 times, last at Minnesota 5/29
Personal Fouls.....	20, vs. Phoenix 5/25
Largest lead at any time....	18, @ Minnesota 5/29
Largest deficit at any time...	13, vs. Phoenix 5/25

SEATTLE STORM LOWS

61, @ Minnesota 5/29
24, @ Minnesota 5/29
37, @ Minnesota 5/29
9, @ Minnesota 5/29
15, @ Minnesota 5/29
20, @ Minnesota 5/29
17, @ Minnesota 5/29
--
24, @ Minnesota 5/29
66, @ Minnesota 5/29
36.4, @ Minnesota 5/29
2, @ Minnesota 5/29
15, @ Minnesota 5/29
13.3, @ Minnesota 5/29
11, @ Minnesota 5/29
14, @ Minnesota 5/29
78.6, vs. Phoenix 5/25
8, @ Minnesota 5/29
14 @ Minnesota 5/29
22 @ Minnesota 5/29
13, @ Minnesota 5/29
10, @ Minnesota 5/29
13, @ Minnesota 5/29
3, @ Minnesota 5/29
18, @ Minnesota 5/29

OPPONENT LOWS

68, vs. Phoenix 5/25
32, vs. Phoenix 5/25
33, @ Minnesota 5/29
22, @ Minnesota
9, vs. Phoenix 5/25
16, vs. Phoenix 5/25
11, @ Minnesota 5/29

8, vs. Phoenix 5/25
8, vs. Phoenix 5/25
80, @ Minnesota 5/29
6, vs. Phoenix 5/25
23, vs. Phoenix 5/25
29, vs. Phoenix 5/25
16 vs. Phoenix 5/25
6, @ Minnesota 5/29
17, vs. Phoenix 5/25

19, @ Minnesota 5/29



DAN HUGHES BIOGRAPHY



DAN HUGHES

WNBA Head Coaching Record: 263-295

Seattle Storm Head Coaching Record: 26-8

Seasons in the WNBA: 18th Season

Seasons with the Storm: 2nd Season

Dan Hughes was named the Seattle Storm's sixth head coach in franchise history on Oct. 4, 2017. In his first year in Seattle, Hughes guided the team to a league-best 26-8 record, an 11-win improvement from the previous season; clinched the No. 1 overall seed in the playoffs; and swept the Washington Mystics in the WNBA Finals to earn the third title in franchise history.

Hughes, who has coached more WNBA games (558) than anyone in league history, has an overall record of 263-295 (.471), good for the third-most wins all-time in the league. He was twice named WNBA Coach of the Year: first in 2001, after guiding the Cleveland Rockers to a 22-10 mark; and again in 2007, after posting a 20-14 record with San Antonio. Hughes also served as a head coach at the 2009 and 2018 WNBA All-Star Games.

Hughes spent 11 years as the head coach and general manager for San Antonio, 2005-09, and 2011-16, guiding the Stars to six postseason appearances. Prior to San Antonio, he led the Cleveland Rockers from 2000-03, and was elevated to head coach in Charlotte midway through the 1999 season, posting a 10-10 record for the Sting. With those three franchises, Hughes made 10 playoff appearances in 16 total seasons, including one WNBA Finals showing in 2008 with San Antonio.

Hughes' leadership is evidenced by his extensive head coaching tree that includes Chicago's James Wade, who began his WNBA career on Hughes' San Antonio staff from 2012-16; Minnesota's Cheryl Reeve, who worked with Hughes in Cleveland in 2003; Dallas' Brian Agler, who was on Hughes' staff in San Antonio from 2005-07; and Phoenix's Sandy Brondello, who was drafted by Hughes in 1998 and served on his staff in San Antonio from 2005-09. Many of his former players have also gone on to coach in the professional ranks, such as Becky Hammon, an assistant coach for the San Antonio Spurs.

Hughes, who served on the USA Basketball Women's National Team Player Selection Committee from 2009-16, was an assistant coach for the 2018 USA Basketball Women's National Team that won gold at the FIBA Women's World Cup.

Prior to the WNBA, he served as the assistant coach for the University of Toledo's women's basketball program (1996-97) and men's basketball program (1991-96). Hughes also served assistant coaching roles with the men's basketball teams at Mount Union College (1982-84 and 1985-91) and Baldwin-Wallace College (1984-85), and as a graduate assistant at Miami of Ohio (1977-78).

In 1977, Hughes graduated with a degree in physical education and history from Muskingum College in New Concord, Ohio. He went on to collect a Master's Degree in education from Miami University of Ohio in 1978. Hughes and his wife, Mary, have two children, Bryce and Sara, son-in-law Major Craig Bayer, and grandkids Logan, Jonah, Casey and Penny.

WNBA HEAD COACHING RECORD

YEAR	TEAM	TITLE	OVERALL	HOME	ROAD	FINISH
2018	SEA	Head Coach	26-8	13-4	13-4	Won WNBA Championship
2016	SAS	Head Coach	7-27	4-13	3-14	DNQ
2015	SAS	Head Coach	8-26	7-10	1-16	DNQ
2014	SAS	Head Coach	16-18	8-9	8-9	Lost in Western Conf. Semifinals
2013	SAS	Head Coach	12-22	8-9	4-13	DNQ
2012	SAS	Head Coach	21-13	12-5	9-8	Lost in Western Conf. Semifinals
2011	SAS	Head Coach	18-16	9-8	9-8	Lost in Western Conf. Semifinals
2009	SAS	Head Coach	15-19	10-7	5-12	Lost in Western Conf. Semifinals
2008	SAS	Head Coach	24-10	15-2	9-8	Lost in WNBA Finals
2007	SAS	Head Coach	20-14	9-8	11-6	Lost in Western Conf. Finals
2006	SAS	Head Coach	13-21	6-11	7-10	DNQ
2005	SAS	Head Coach	7-27	5-12	2-15	DNQ
2003	CLE	Head Coach	17-17	11-6	6-11	Lost in Eastern Conf. Semifinals
2002	CLE	Head Coach	10-22	4-12	6-10	DNQ
2001	CLE	Head Coach	22-10	14-2	8-8	Lost in Eastern Conf. Semifinals
2000	CLE	Head Coach	17-15	13-3	4-12	Lost in Eastern Conf. Finals
1999	CHA	Head Coach*	10-10	6-4	4-6	Lost in Eastern Conf. Finals
TOTALS			263-295	154-125	109-170	---

*Named Charlotte HC midway through 1999 season.



Guard • 5-10 • 10/16/80 • UConn • 18th season

2019 NOTABLES:

2019 NOTABLES:

SEASON AVERAGES

[illegible]

GAME-BY-GAME STATS

[illegible]

	2019 SEASON HIGHS	CAREER HIGHS
PTS	8 vs. Phoenix 5/25/19	19 vs. San Antonio 9/13/15
REB	3 vs. Phoenix 5/25/19	4 (7 times)
AST	2 vs. Phoenix 5/25/19	4 (2 times)
STL	1 vs. Phoenix 5/25/19	3 @ Chicago 9/3/17
BLK	--	1 (5 times)
FGM	3 vs. Phoenix 5/25/19	8 vs. San Antonio 9/13/15
3FGM	2 vs. Phoenix 5/25/19	4 (2 Times)
FTM	--	6 vs. Indiana 5/14/17
MINs	19 @ Minnesota 5/29/19	33 vs. San Antonio 9/13/15

2019 NOTABLES:

SEASON AVERAGES

G-GS	PPG	RPG	APG	SPG	BPG	MPG	FG%	3FG%	FT%
2-2	6.0	2.5	1.0	1.0	--	18.9	50.0	40.0	--

GAME-BY-GAME STATS

[illegible]

Center • 6-4 • 9/21/87 • Oklahoma • 10th season

2019 NOTABLES:

2019 NOTABLES:

VERAGES

BPG	MPG	FG%	3FG%	FT%
1.0	7.0	--	--	--

GAME STATS

[illegible]

Guard • 5-10 • 7/20/88 • Washington • 2nd season

2019 NOTABLES:

	2019 SEASON HIGHS	CAREER HIGHS
PTS	3 vs. Phoenix 5/25/19	22 vs. New York 5/26/17
REB	1 vs. Phoenix 5/25/19	6 @ Washington 6/27/17
AST	3 @ Minnesota 5/29/19	4 (2 times)
STL	2 @ Minnesota 5/29/19	4 vs. Dallas 8/19/18
BLK	--	1 (4 times)
FGM	2 @ Minnesota 5/29/19	6 @ New York 5/26/17
3FGM	1 vs. Phoenix 5/25/19	6 @ New York 5/26/17
FTM	--	4 @ New York 5/26/17
MIN	17 @ Minnesota 5/29/19	28 vs. Dallas 8/19/18

SEASON AVERAGES

G-GS	PPG	RPG	APG	SPG	BPG	MPG	FG%	3FG%	FT%
2-0	4.0	0.5	1.5	1.0	--	13.5	37.5	28.6	--

GAME-BY-GAME STATS

[illegible]

21

JORDIN CANADA
Guard • 5-6 • 8/11/95 • UCLA • 2nd season

	2019 SEASON HIGHS	CAREER HIGHS
PTS	16 vs. Phoenix 5/25/19	16 vs Phoenix 5/25/19
REB	3 vs. Phoenix 5/25/19	5 (2 times)
AST	6 vs. Phoenix 5/25/19	9 @ Dallas 6/2/18
STL	3 vs. Phoenix 5/25/19	5 @ Dallas 6/2/18
BLK	1 vs. Phoenix 5/25/19	1 (2 times)
FGM	7 vs. Phoenix 5/25/19	7 vs Phoenix (5/25/19
3FGM	--	1 (10 times)
FTM	3 @ Minnesota 5/29/19	6 vs. Las Vegas 5/31/18
MIN	34 vs. Phoenix 5/25/19	34 vs Phoenix 5/25/19

Made 3rd career start on 5/25/19 vs Phoenix...Recorded career-high 16 pts and played career-high 34 minutes on 5/25/19 vs. Phoenix

SEASON AVERAGES

G-GS	PPG	RPG	APG	SPG	BPG	MPG	FG%	3FG%	FT%
2-2	11.5	2.5	5.0	2.5	0.5	31.0	42.0	0.0	62.5

GAME-BY GAME STATS

[illegible]

32 **ALYSHA CLARK**
Guard • 5-10 • 7/7/87 • MTSU • 8th season

	2019 SEASON HIGHS	CAREER HIGHS
PTS	--	23 vs. New York 6/5/16
REB	--	10 @ Connecticut 8/8/17
AST	--	7 @ Atlanta 9/4/16
STL	--	5 (Los Angeles 6/7/19
BLK	--	4 vs. Los Angeles 5/16/14
FGM	--	9 (2 times)
3FGM	--	3 (10 times)
FTM	--	8 vs. Los Angeles 7/10/18
MINs	--	38 vs. Los Angeles 7/10/18

2019 NOTABLES:

SEASON AVERAGES

[illegible]

GAME-BY-GAME STATS

[illegible]

Forward • 6-2 • 9/2/91 • Florida State • 6th season

2019 NOTABLES:

2019 NOTABLES:

AVERAGES

BPG	MPG	FG%	3FG%	FT%
1.5	32.7	47.1	20.0	50.0

GAME STATS

[illegible]

Forward • 6-2 • 10/27/86 • Maryland • 13th season

2019 NOTABLES:

2019 NOTABLES:

VERAGES

BPG	MPG	FG%	3FG%	FT%
0.5	28.1	40.0	0.0	83.3

GAME STATS

[illegible]

Forward • 5-11 • 9/2/1991 • MSST • Rookie

2019 NOTABLES:[illegible]

2019 NOTABLES:

2019 NOTABLES:

SEASON AVERAGES									
G-GS	PPG	RPG	APG	SPG	BPG	MPG	FG%	3FG%	FT%
2-0	2.0	3.5	--	1.0	--	15.5	50.0	--	--

[illegible]

Guard • 5-10 • 8/28/1986 • Pittsburgh • 11th season

2019 NOTABLES:

2019 NOTABLES:

SEASON AVERAGES

G-GS	PPG	RPG	APG	SPG	BPG	MPG	FG%	3FG%	FT%
2-0	1.0	0.5	2.5	--	--	17.5	12.5	0.0	0.0

GAME-BY-GAME STATS

[illegible]

Seattle Storm 2019

Spotter Chart



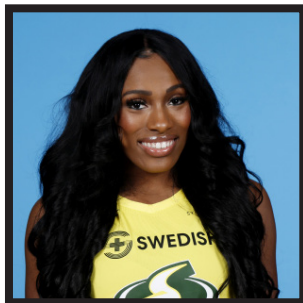
#1-CRYSTAL
LANGHORNE



#2-MERCEDES
RUSSELL



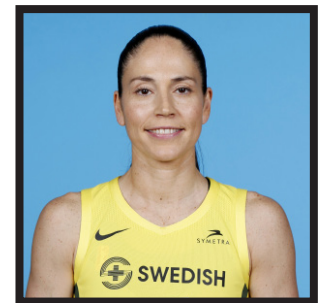
#3-COURTNEY
PARIS



#5-ANRIEL
HOWARD



#6-NATASHA
HOWARD



#10-SUE BIRD



#11-SHAVONTE
ZELLOUS



#23-KALEENA
MOSQUEDA-LEWIS



#21-JORDIN
CANADA



#24-JEWELL
LOYD



#32-ALYSHA
CLARK



#33-SAMI
WHITCOMB

