

# LOS ANGELES SPARKS 2019 GAME NOTES



## Los Angeles Sparks (11-8) vs. Las Vegas Aces (14-6)

August 1, 2019

Staples Center | 7:00 pm (PT) | ESPN2, NBA TV Canada



### PRESEASON SCHEDULE

Date	Opponent	Time/Result	Record
5/11	at Phoenix*	L, 75-82	N/A
5/17	SEATTLE*	W, 92-85	N/A

### REGULAR SEASON SCHEDULE

Date	Opponent	Time/Result	Record
5/26	at Las Vegas	L, 70-83	0-1
5/31	CONNECTICUT	W, 77-70	1-1
6/4	at New York	W, 78-73	2-1
6/6	at Connecticut	L, 89-77	2-2
6/8	at Minnesota	W, 89-85	3-2
6/14	at Phoenix	W, 85-68	4-2
6/15	NEW YORK	L, 92-98	4-3
6/18	WASHINGTON	L, 81-52	4-4
6/21	at Seattle	L, 84-62	4-5
6/23	at Phoenix	L, 82-72	4-6
6/27	LAS VEGAS	W, 86-74	5-6
6/30	CHICAGO	W, 94-69	6-6
7/7	WASHINGTON	W, 98-81	7-6
7/9	at Dallas	L, 74-62	7-7
7/12	at Indiana	W, 90-84	8-7
7/14	at Atlanta	W(OT), 76-71	9-7
7/18	DALLAS	W, 69-64	10-7
7/20	at New York	L, 83-78	10-8
7/23	at Atlanta	W, 78-66	11-8
8/1	LAS VEGAS	7:00 p.m.	
8/4	SEATTLE	2:00 p.m.	
8/8	PHOENIX	7:00 p.m.	
8/11	CHICAGO	2:00 p.m.	
8/14	at Dallas	5:00 p.m.	
8/16	at Chicago	5:00 p.m.	
8/20	MINNESOTA	7:30 p.m.	
8/22	INDIANA	7:30 p.m.	
8/25	CONNECTICUT	2:00 p.m.	
8/27	at Washington	4:00 p.m.	
8/29	at Indiana	4:00 p.m.	
8/31	at Las Vegas	7:30 p.m.	
9/3	ATLANTA	7:30 p.m.	
9/5	SEATTLE	7:30 p.m.	
9/8	MINNESOTA	1:00 p.m.	

\* = Preseason

All times listed are Pacific Time

### CONTACT INFORMATION

#### Eli Horowitz

Director, Public Relations and Communications  
ehorowitz@la-sparks.com  
(847) 644-9932

#### Natalie Gilmore

Coordinator, Public Relations and Communications  
ngilmore@la-sparks.com  
(661) 714-8051



@LA\_Sparks



@LA\_Sparks



Los Angeles Sparks

### LAST GAME STARTERS

G	12	CHELSEA GRAY					5'11"	170 LBS		
GP/GS 19/19	PPG 13.2	RPG 4.1	APG 5.5	SPG 1.2	FG% 40	3FG% 34.5	MPG 31.4			

Gray recorded her 500th career assist and scored a career-high 29 points against the Liberty on June 4. Gray also logged a 21-point performance to help the Sparks defeat the Lynx on June 8, eclipsing the 1500-point career milestone. Gray passed Tina Thompson with 1,569 points and entered the top-10 in Sparks scoring history on June 18. The point guard recorded a triple-double (13 points, 13 assists and 10 rebounds) on July 7, the eighth in WNBA history. This stat line also included a career high in assists and rebounds. Gray was named a 2019 All-Star starter, her third straight year receiving the honor.

G	24	SYDNEY WIESE				6'1"				165 LBS					
GP/GS	17/9	PPG	4.5	RPG	1.4	APG	1.2	SPG	0.6	FG%	34.6	3FG%	34.6	MPG	18.5

Drafted in 2017, Wiese scored a season high 22 points against the Mystics on May 19, 2017 and set the Sparks individual season high with six 3-pointers. The guard has started nine games this season compared to zero starts last season. She is averaging 4.5 points in 18.5 minutes while shooting 34.6% from beyond the arc. Wiese hit her season-high 12 points against Washington on June 18 and added a career high in assists against New York on July 20 with six.

G/F	10	TIERRA RUFFIN-PRATT				5'11"	180 LBS		
GP/GS	19/18	PPG 7.3	RPG 2.7	APG 2.2	SPG 0.6	FG% 39.8	3FG% 41.7	MPG 25.6	

Before the 2019 WNBA Draft, The Sparks signed free agent guard Tierra Ruffin-Pratt, who played six seasons with the Washington Mystics and helped them reach the 2018 WNBA Finals. The veteran is averaging 6.4 points per game in her sixth season in the WNBA and is shooting 35.9% from the 3-point line. TRP recorded a career high of 23 points against the Atlanta Dream on July 23, sinking a career-high six 3-pointers.

F/C	13	CHINEY OGWUMIKE				6'4"		173 LBS							
GP/GS	19/13	PPG	11.7	RPG	7.4	APG	1.2	SPG	1.2	FG%	47.9	3FG%	33.3	MPG	26.5

Ogwumike joined the Sparks in 2019 following her offseason trade from the Sun and put up 20 points in the teams' first head-to-head meeting on May 31. The former Rookie of the Year recorded her first double-double of the season in a win over the Liberty on June 4 and her second in the Sparks second game against the Liberty, scoring 26 points and grabbing 14 rebounds. She notched her third double-double of the season on July 9 against Dallas with 11 points and 10 rebounds. She currently ranks first in the WNBA offensive rebounds per game with 3.4, after grabbing seven offensive rebounds against the Atlanta Dream on July 23.

F	30	NNEKA OGWUMIKE					6'2"	174 LBS							
GP/GS	18/18	PPG	16.6	RPG	9.4	APG	2.0	SPG	1.8	FG%	47.2	3FG%	41.7	MPG	30.1

On July 15, Nneka was named an All-Star for the sixth time in her career. The 2016 MVP's 9.4 rebounds per game currently ranks third in the league. Ogumike has recorded eight double-doubles this season, which ranks tied for second most in the WNBA. She posted a career high in 3-pointers made, with five, on July 7 against the Mystics alongside 31 points and 10 rebounds. Against the Fever on July 12, Nneka tied her career high with six steals. Nneka was named WNBA Player of the Week for the week ending July 14.

## PLAYER UPDATES

NUM.	PLAYER	POS.	UPDATE
0	Alana Beard	G	Hamstring
1	Alexis Jones	G	Knee
2	Riquna Williams	G	Suspended
3	Candace Parker	F/C	Ankle
7	Maria Vadeeva	F/C	Knee

## WHERE DID YOU COME FROM?

NUM.	PLAYER	HOW ACQUIRED
0	Alana Beard	Free agent (2012)
1	Alexis Jones	Trade (2019)
2	Riquna Williams	Trade (2016)
3	Candace Parker	Draft (2008)
5	Marina Mabrey	Draft (2019)
7	Maria Vadeeva	Draft (2018)
10	Tierra Ruffin-Pratt	Free agent (2019)
12	Chelsea Gray	Trade (2016)
13	Chiney Ogwumike	Trade (2019)
21	Kalani Brown	Draft (2019)
24	Sydney Wiese	Draft (2017)
30	Nneka Ogwumike	Draft (2012)

## MILESTONE WATCH

PLAYER	MILESTONE (CURRENT)
Candace Parker	5500 points (5169) 1200 assists (1173) 3000 rebounds (2593) 550 blocks (505)
Alana Beard	5000 points (4713) 1100 assists (1052) 250 blocks (218) 800 steals (705)
Nneka Ogwumike	4000 points (3822) 2000 rebounds (1803)
Chiney Ogwumike	2000 points (1538) 1000 rebounds (839)
Chelsea Gray	2000 points (1658) 600 assists (585)

## PRONOUNCIATION

PLAYER/COACH	PRONOUNCIATION
Alana Beard	ah-LAY-nah
Kalani Brown	kuh-lah-NEE
Chiney Ogwumike	shih-NAY Oh-gwoo-MIH-kay
Nneka Ogwumike	NEH-kuh Oh-gwoo-MIH-kay
Tierra Ruffin-Pratt	Tee-air-rah
Maria Vadeeva	Vuh-DEE-vuh
Sydney Wiese	WEECE (rhymes with REESE)
Riquna Williams	rih-QUAHN-uh

## COACHING STAFF

NAME	ROLE
Derek Fisher	Head Coach
Latricia Trammell	Assistant Coach
Fred Williams	Assistant Coach
Jamal "Dash" Lovell	Player Development Coach
Courtney Watson	Athletic Trainer
Kelly Dormandy	Strength and Conditioning Coach
Rachel Schrote	Video Coordinator

## RUMBLE IN THE WEST

The Los Angeles Sparks (11-8) sit in fourth place after the All-Star break and return to take on the Las Vegas Aces (11-8) for the third time this season. The Sparks defeated Las Vegas 86-74 after the Aces were victorious in both team's first game of the season 83-70. Las Vegas is one of the hotter teams in the WNBA, going 7-1 over their last eight games. The Sparks look to improve their home record to 6-2, while extending their home winning streak to five games. Leading the charge for the Sparks are All-Stars Nneka Ogwumike and Chelsea Gray who both currently rank in the top 20 in the WNBA in scoring, tallying 16.6 and 13.2 points per game respectively.

## NNEKA DOUBLE-DOUBLE OGWUMIKE

After only grabbing five double-doubles last season, Nneka Ogwumike has already tallied eight this season, ranking her in the top three in the WNBA in total double-doubles this season. In the first seven seasons of her career, Ogwumike has averaged a hair over 9 double-doubles per season, and is on pace to finish the 2019 season with 16 double-doubles, which would tie her career-high during her MVP season of 2016. Over her last six games, Ogwumike has registered four double-doubles.

## HEADBAND T

Since signing with the Los Angeles, Tierra Ruffin-Pratt, otherwise known as TRP has been a defensive stalwart for the Sparks in the first half of the season. TRP currently ranks in the top five amongst guards in the WNBA in blocks, averaging 0.7 blocks per game. Her stifling defense has contributed to her top 20 defensive rating amongst guards who have played at least 10 games this season, but on July 23rd her offense was the topic of discussion. Sporting a headband for her first time this season, TRP recorded a career high of 23 points against the Atlanta Dream, where she was 6-9 from behind the arc, a career high in 3-pointers made.

## GRAY VS OGWUMIKE

Chelsea Gray and Nneka Ogwumike faced off against one another in the 2019 WNBA All-Star Game in Las Vegas. Gray, selected first overall by team captain A'ja Wilson, started the game for Team Wilson and finished two points shy of a double-double, scoring eight points while dishing out 10 assists. Selected by captain Elena Delle Donne, Ogwumike came off the bench for Team Delle Donne and posted a team-leading 22 points, going 11-15 from the field. Team Wilson defeated Team Delle Donne 129-126.

## SYDNEY WIESE AND THE EXPANDED ROLE

With injuries to several key players, guard Sydney Wiese has seen an expanded role in the Sparks system. After not starting any games in her first two seasons in the WNBA, Wiese has started more than half of the games she has played in and has seen her scoring and assists numbers improve exponentially. Wiese is averaging 23 minutes per game in games that she has started, providing valuable minutes for the Sparks. Wiese also recorded a career high in assists on July 20th against the New York Liberty, where she had six.

## ROOKIE SUCCESS

Rookies Kalani Brown and Marina Mabrey have been two of the most effective rookies in the WNBA this season, and the numbers do not lie. Brown ranks in the top five amongst all rookies in points (5.4), rebounds (3.7) and blocks (0.8). Mabrey ranks in the top ten in points (4.9), assists (1.3), and steals (0.7). Mabrey also leads all non-first round draft picks in points, steals and blocks.

## 2019 LOS ANGELES SPARKS ROSTER

NUM.	PLAYER	POS.	HT.	YRS OF EXP.	DOB	COLLEGE
0	Alana Beard	G/F	5'11"	13	05/14/82	Duke
1	Alexis Jones	G	5'9"	2	05/08/94	Baylor
2	Riquna Williams	G	5'7"	6	05/28/ 90	Miami (Fla.)
3	Candace Parker	F/C	6'4"	11	04/19/86	Tennessee
5	Marina Mabrey	G	5'11"	R	11/14/96	Notre Dame
7	Maria Vadeeva	F/C	6'4"	1	07/16/98	Russia
10	Tierra Ruffin-Pratt	G/F	5'11"	6	04/11/91	North Carolina
12	Chelsea Gray	G	5'11"	4	10/08/92	Duke
13	Chiney Ogwumike	F/C	6'4"	3	03/22/92	Stanford
21	Kalani Brown	C	6'7"	R	03/21/97	Baylor
24	Sydney Wiese	G	6'0"	2	06/16/95	Oregon State
30	Nneka Ogwumike	F	6'2"	7	07/02/90	Stanford

# 2019 LA SPARKS ROSTER



**ALANA BEARD**  
Position: G/F  
Height: 5'11"  
DOB: 5/14/82  
College: Duke



**ALEXIS JONES**  
Position: G  
Height: 5'9"  
DOB: 5/8/94  
College: Baylor



**RIQUANA WILLIAMS**  
Position: G  
Height: 5'7"  
DOB: 5/28/90  
College: Miami



**CANDACE PARKER**  
Position: F/C  
Height: 6'4"  
DOB: 4/19/86  
College: Tennessee



**MARINA MABREY**  
Position: G  
Height: 5'11"  
DOB: 9/14/96  
College: Notre Dame



**MARIA VADEEVA**  
Position: F/C  
Height: 6'4"  
DOB: 7/16/98  
College: Russia



**TIERRA RUFFIN-PRATT**  
Position: G/F  
Height: 5'11"  
DOB: 4/11/91  
College: North Carolina



**CHELSEA GRAY**  
Position: G  
Height: 5'11"  
DOB: 10/8/92  
College: Duke



**CHINEY OGWUMIKE**  
Position: F/C  
Height: 6'4"  
DOB: 3/22/92  
College: Stanford



**KALANI BROWN**  
Position: C  
Height: 6'7"  
DOB: 3/21/97  
College: Baylor



**SYDNEY WIESE**  
Position: G  
Height: 6'0"  
DOB: 6/16/95  
College: Oregon State

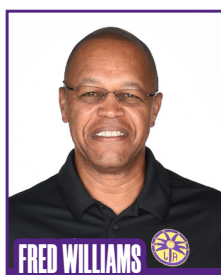


**NNEKA OGWUMIKE**  
Position: F  
Height: 6'2"  
DOB: 7/2/90  
College: Stanford

## COACHING STAFF



**DEREK FISHER**  
HEAD COACH



**FRED WILLIAMS**  
ASSISTANT COACH



**LATRICA TRAMMELL**  
ASSISTANT COACH



**JAMAL LOVELL**  
PLAYER  
DEVELOPEMENT  
COACH



**COURTNEY WATSON**  
DIRECTOR OF  
SPORTS MEDICINE/  
HEAD ATHLETIC  
TRAINER



**KELLY DORMANDY**  
STRENGTH &  
CONDITIONING  
COACH

## LAS VEGAS ACES

PREVIEW: The Los Angeles Sparks take on the Las Vegas Aces in their first game back from the All-Star break. The top two teams in the Western Conference will face off against each other for the third time this season, with each securing one win over the other.

The Las Vegas Aces are tied for the best record in the WNBA with the Connecticut Sun at 14-6. In their last game before the All-Star break, the Aces defeated the Seattle Storm 79-62. All-Stars Liz Cambage and Kayla McBride led the Aces. Cambage currently ranks in the top 10 in both points and rebounds per game. McBride leads the Aces behind the three-point line, shooting the ball 47.4% from beyond the arc, putting her third in the WNBA. The Aces are currently without A'ja Wilson due to an ankle injury.

Las Vegas currently ranks first in the WNBA in total rebounds per game (39.4) and total assists per game (21.4), while ranking second overall in points per game, scoring nearly 81.7 points a game. In addition to scoring the ball with volume, the Aces also lead the WNBA in defensive rating with 88.9 and limits opponents to 28 points in the paint per game to also lead the league.

Last time out, the Sparks took on the Atlanta Dream for the second time in nine days in Atlanta, where the Sparks defeated the Dream 78-66. Los Angeles was led by guard Tierra Ruffin-Pratt who set career-highs in points (23) and three-point field goals made (6). Ruffin-Pratt's previous career high was 20 points while a member of the Washington Mystics four years ago. Also leading the charge for the Sparks was All-Star forward Nneka Ogumike who tallied 24 points and Chiney Ogumike who recorded a double-double with 15 points and 12 rebounds, marking her fourth double-double of the season.

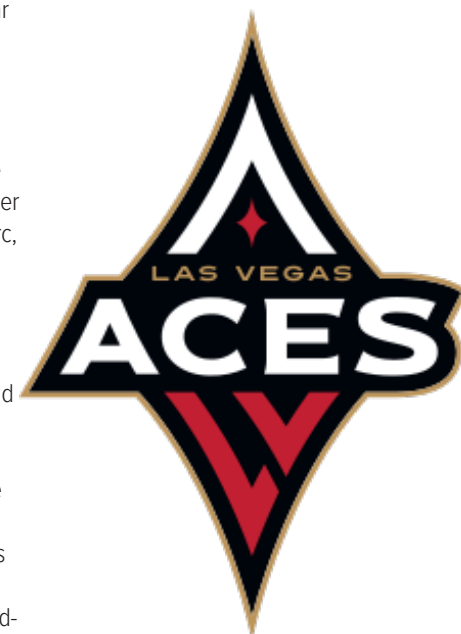
The last time the Sparks and Aces faced off was on June 27th where the Sparks defeated the Aces 86-74. Los Angeles was led by All-Star guard Chelsea Gray and Candace Parker, who each scored 18 points. The game also marked a breakthrough game for rookie center Kalani Brown who scored 12 points in this contest, marking her career high for points in a game. The Aces were led by Cambage who scored 18 points and Hamby recorded a double-double with 13 points and 10 rebounds off the bench.

Since 2018, the Aces and Sparks have played five times, with the Sparks winning three of those contests, going 2-0 at home against Las Vegas. The Sparks will look to extend their home winning streak to five games in this matchup.

HEAD COACH: Bill Laimbeer, 2nd season

### Probable Starters

C Liz Cambage  
F Dearica Hamby  
G Kayla McBride  
G Jackie Young  
G Kelsey Plum



### SPARKS MOST RECENT GAME (7/23/19)

	1	2	3	4	OT	FINAL
LA	16	14	16	32	-	78
ATL	17	15	19	15	-	66

Biggest Lead: LA: 12 | ATL: 6  
Lead Changes: 21 | Times Tied: 5

Points: LA: N. Ogumike 24 ATL: Billings 16  
Rebounds: LA: C. Ogumike 12  
ATL: Billings, Williams 8  
Assists: LA: Gray 6, ATL: Bentley 5

### SPARKS LAST GAME AGAINST ACES (6/27/19)

	1	2	3	4	OT	FINAL
LA	17	23	26	20	-	86
LV	18	16	19	21	-	74

Biggest Lead: LA: 19 | LV: 5  
Lead Changes: 3 | Times Tied: 0

Points: LA: Parker, Gray, Williams 18  
LV: Cambage 18  
Rebounds: LA: C. Ogumike 10 LV: Hamby 10  
Assists: LA: Gray 6 LV: Young 9

### ACES MOST RECENT GAME (7/30/19)

	1	2	3	4	OT	FINAL
LVA	24	18	25	19	-	86
DAL	13	14	11	16	-	54

Biggest Lead: LVA: 40 | DAL: 0  
Lead Changes: 0 | Times Tied: 0

Points: LVA: Hamby, Young 18  
DAL: Ogunbowale 14  
Rebounds: LVA: Hamby 11  
DAL: Harrison, Gustafson 8  
Assists: LVA: Young 7, DAL: Gray 4



## ATLANTA DREAM

ATLANTA (July 23, 2019) – The Sparks got a career-high 23 points and six 3-pointers made from Tierra Ruffin-Pratt to help the team pull away late in Atlanta with a 78-66 win. The Sparks trailed 65-63 midway through the fourth quarter, but ended the game on a 15-1 run to earn their win. The team scored 32 fourth quarter points, the most the team has scored in a quarter all season.

The game marked the Sparks 12th road game compared to just seven games played at Staples Center. No WNBA team has played as many contests away from home. The Sparks are now 6-6 on the road and 5-2 at home.

The Sparks were also short-handed again, playing without Candace Parker (ankle), Alana Beard (hamstring), Riquana Williams (league suspension), Maria Vadeeva (knee) and Alexis Jones (knee).



Sydney Wiese scored the first Sparks basket with a 3-pointer, but the Sparks shot just 31.8% in the first quarter on 7-for-22 shooting. Jessica Breland hit three jumpers in the opening period, including a triple, to lead the way for Atlanta with seven points. The Dream led 17-16 after the first quarter.

A Tierra Ruffin-Pratt triple tied the game at 23-23, which ignited a 10-3 run that saw the Sparks take a 30-26 lead after a Chelsea Gray drive. But the Dream answered with a 6-0 run to close the half and take a 32-30 lead into the locker room. Atlanta started the second half on a 4-0 run to force a timeout from Derek Fisher with the Dream leading 36-30. Tiffany Hayes, who missed the past two games with a hamstring injury, was called for a technical foul after gesturing to referee Jenna Schroeder after she was whistled for fouling Chiney Ogumike. A Ruffin-Pratt 3-pointer, which followed the Sparks connecting on all three foul shots, tied the game at 36. Ruffin-Pratt added two more triples to give the Sparks a 44-38 lead, but Atlanta responded with a 13-2 run to go up 51-46 after three quarters.

Ruffin-Pratt opened the scoring in the fourth quarter with her career high fifth 3-pointer of the contest. She'd hit her sixth to give her a new career high in points, previously set on June 23, 2015 as a member of the Washington Mystics against the Sparks. A Nneka put-back gave the Sparks a 58-57 lead. The game seesawed back and forth until a Chelsea Gray 3-pointer gave the Sparks a 66-65 lead and a Nneka 3-pointer put the Sparks up 71-66 with 1:45 remaining. Chiney scored an and-one to put the Sparks up 74-66 with 1:11 to go and the team never looked back.

**Attendance: 7,047**

### SPARKS MOST RECENT GAME

(7/23/19)

	1	2	3	4	OT	FINAL
LA	16	14	16	32	-	78
ATL	17	15	19	15	-	66

Biggest Lead: LA: 12 | ATL: 6

Lead Changes: 21 | Times Tied: 5

Points: LA: N. Ogumike 24 ATL: Billings 16

Rebounds: LA: C. Ogumike 12

ATL: Billings, Williams 8

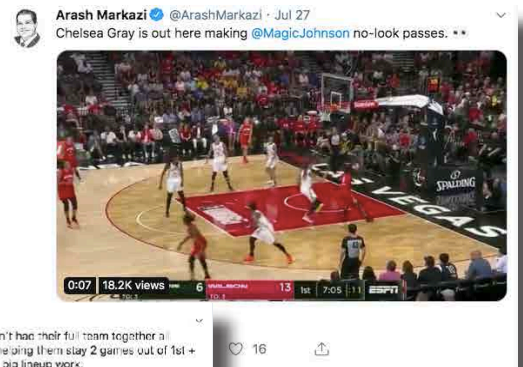
Assists: LA: Gray 6, ATL: Bentley 5

### Sparks Notes:

- The Sparks were without Candace Parker (ankle), Alana Beard (hamstring), Alexis Jones (knee), Maria Vadeeva (knee) and Riquana Williams (suspension)
- Nneka Ogumike reached double-figures for the 15th time this season and crossed the 20-point mark for the 7th time this season with 24 points, 9 rebounds and 5 assists
- Chelsea Gray reached double-figures for the 13th time this season with 10 points and 6 assists
- Tierra Ruffin-Pratt reached double-figures for the sixth time this season and made a career high five 3-pointers to finish with 23 points
- Tierra Ruffin-Pratt set a new career high with 23 points. Her previous career high was 20 points set on June 23, 2015 as a member of the Washington Mystics against the Sparks.
- Chiney Ogumike reached double-figures for the 12th time this season and recorded her fourth double-double with 15 points and 12 rebounds

# SPARKS IN THE NEWS

DATE	TITLE	OUTLET	AUTHOR
7/30/19	Post-All-Star break, the Sparks are read to tackle the second half of the season	The Suave Report	Megan Hines
7/30/19	Sparks Team Up With Local Agencies To Support Military Women And Veterans	CBS Los Angeles	—
7/27/19	Sparks' Nneka Ogumike, Chelsea Gray committed to enhanced Team USA training program	LA Daily News	Mirjam Swanson
7/27/19	Nneka Ogumike on facing Sparks teammate Chelsea Gray in All-Star game: 'It sucked'	LA Times	Brady Klopfer
7/26/19	Two sisters could be the voice of the WNBA — on the court, in labor talks and on ESPN	Washington Post	Howard Megdal
7/25/19	The Sparks are showcasing their backcourt depth in Riquna Williams' absence	The Athletic	Sabreena Merchant
7/25/19	Vol Is Life: How the Last of Pat Summitt's Players Are Keeping Her Legacy Alive	The Ringer	Brady Klopfer
7/25/19	Play-by-play breakdown: Karlie Samuelson's performance on Ryan's Mystery Playdate	High Post Hoops	Russell Steinberg
7/24/19	Los Angeles Sparks, Phoenix Mercury looking for winning touch	ESPN	Mechelle Voepel
7/23/19	Nneka Ogumike Makes LA Sparks the Contender You Won't See Coming	The Basketball Writers	Ben Dull



POINTS SCORED AGAINST THE ACES		LEAGUE AND FRANCHISE MILESTONES			
3. Liz Cambage	88	ALANA BEARD			
4. Chelsea Gray	83	WNBA	3PM	Next: 300	Current: 287
9. Breanna Stewart	71	LAS	AST	Next: 500	Current: 489
Candace Parker	71	LAS	BLK	Next: 100	Current: 89
28. Jonquel Jones	48	CHELSEA GRAY			
29. Chiney Ogwumike	47	LAS	PTS	Next: 1500	Current: 1453
34. 3 players	44	LAS	FTM	Next: 250	Current: 237
Nneka Ogwumike	44	NNEKA OGWUMIKE			
40. 4 players	40	WNBA	FGM	Next: 1500	Current: 1494
Maria Vadeeva	40	CHINEY OGWUMIKE			
62. Crystal Langhorne	31	WNBA	DREB	Next: 500	Current: 491
Riquna Williams	31	TIERRA RUFFIN-PRATT			
84. Alaina Coates	19	WNBA	FTA	Next: 500	Current: 481
Tierra Ruffin-Pratt	19	RIQUNA WILLIAMS			
90. 6 players	16	WNBA	STL	Next: 200	Current: 196
Kalani Brown	16	LAS	FGA	Next: 500	Current: 490
97. 2 players	15	RECENT MILESTONES			
Alana Beard	15	CHELSEA GRAY			
POINTS IN SPARKS FRANCHISE HISTORY		LAS	AST	500	Jul 23
1. Lisa Leslie	6253	NNEKA OGWUMIKE			
2. Candace Parker	5169	WNBA	2PA	2500	Jul 18
3. DeLisha Milton-Jones	4018	CANDACE PARKER			
4. Nneka Ogwumike	3864	WNBA	GM	300	Jul 9
8. Jantel Lavender	2267	RIQUNA WILLIAMS			
9. Alana Beard	1585	LAS	3PM	100	Jul 14
10. Chelsea Gray	1453	ALL TIME VS. ACES			
21. Ukari Figgs	567	ALL	3 - 2 (0.600)		
22. Riquna Williams	554	HOME	2 - 0 (1.000)		
44. La'Keshia Frett	228	AWAY	1 - 2 (0.333)		
45. Chiney Ogwumike	223	2018	2 - 1 (0.667)		
61. Sandrine Gruda	143	2018 VS. ACES			
62. Sydney Wiese	140	6/29	@LV	L	78-94
63. Tierra Ruffin-Pratt	139	7/1	LV	W	87-71
68. Nina Bjedov	121	7/15	@LV	W	99-78
69. Maria Vadeeva	115				
73. 2 players	94				
Kalani Brown	94				

\*Statistics courtesy of [www.acrossthetimeline.com](http://www.acrossthetimeline.com)

2019 TEAM BOX SCORE																	
DATE	OPPONENT	MIN	FG-A	PCT	3PM-A	PCT	FTM-A	PCT	OFF	DEF	TOT	AST	STL	BLK	TO	PF	PTS
5/26	@LV	200:0	28 - 77	36.4	5 - 13	38.5	9 - 13	69.2	10	30	40	17	9	8	14	22	70
5/31	CT	200:0	28 - 72	38.9	6 - 20	30.0	15 - 17	88.2	9	30	39	15	6	4	10	22	77
6/4	@NY	200:0	27 - 78	34.6	8 - 21	38.1	16 - 20	80.0	13	27	40	15	9	6	12	15	78
6/6	@CT	200:0	29 - 66	43.9	8 - 25	32.0	11 - 12	91.7	7	18	25	23	13	4	21	18	77
6/8	@MIN	200:0	32 - 74	43.2	9 - 25	36.0	16 - 17	94.1	12	21	33	18	13	5	16	21	89
6/14	@PHX	200:0	34 - 66	51.5	9 - 19	47.4	8 - 9	88.9	5	25	30	19	7	4	9	21	85
6/15	NY	200:0	39 - 84	46.4	8 - 23	34.8	6 - 7	85.7	12	30	42	22	5	3	14	22	92
6/18	WASH	200:0	19 - 66	28.8	3 - 19	15.8	11-18	61.6	10	28	38	10	9	1	26	12	52
6/21	@SEA	200:0	23 - 61	37.7	6 - 21	28.6	10 - 12	83.3	5	24	29	13	4	4	14	15	62
6/23	@PHX	200:0	26 - 70	37.1	8 - 23	34.8	12 - 14	85.7	10	29	39	19	2	2	10	24	72
6/27	LV	200:0	32 - 75	42.7	8 - 18	44.4	14 - 15	93.3	8	31	39	17	11	6	14	13	86
6/30	CHI	200:0	35 - 71	49.3	10 - 24	41.7	14 - 15	92.3	10	26	36	21	8	6	14	15	94
7/7	WASH	200:0	36 - 74	48.6	16 - 31	51.6	10 - 12	83.3	7	32	39	24	4	5	6	15	98
7/9	@DAL	200:0	26 - 71	36.6	4 - 19	21.1	6 - 7	85.7	17	19	36	16	6	4	21	12	62
7/12	@IND	200:0	34-78	43.6	7-22	31.8	15-17	88.2	13	18	31	23	16	2	12	13	90
7/14	@ATL	205:0	30 - 87	34.5	6 - 26	23.1	10 - 12	83.3	16	27	43	17	8	6	5	17	76
7/18	DAL	200:0	23 - 60	38.3	4 - 12	33.3	19 - 21	90.5	8	23	31	13	9	1	11	14	69
7/20	@NY	200:0	28 - 65	43.1	10 - 25	40.0	12 - 16	75.0	5	21	26	18	7	6	11	27	78
7/23	@ATL	200:0	28 - 65	43.1	9 - 19	47.4	13 - 15	86.7	11	27	38	22	10	5	13	16	78
8/1	LV																
8/4	SEA																
8/8	PHO																
8/11	CHI																
8/14	@DAL																
8/16	@CHI																
8/20	MIN																
8/22	IND																
8/25	CT																
8/27	@WASH																
8/29	@IND																
8/31	@LV																
9/3	ATL																
9/5	SEA																
9/8	MIN																



## 2019 REGULAR SEASON SUPERLATIVES

### LOS ANGELES SPARKS HIGHS

Points, Game.....98 vs. Washington 7/7  
 Points, First Half.....51 vs. Washington 7/7  
 Points, Second Half..... 48 @ Atlanta 7/23  
 Points, 1Q.....29 vs. Washington 7/7  
 Points, 2Q.....31 vs. New York 6/15  
 Points, 3Q.....31 @ Indiana 7/12  
 Points, 4Q.....32 @ Atlanta 7/23  
 Points, Overtime.....12 @ Atlanta 7/14

Field Goals Made.....39 vs. New York 6/15  
 Field Goals Att.....87 @ Atlanta 7/14  
 Field Goal Percentage...51.9% @ Phoenix 6/14  
 3FG Made.....16 vs. Washington 7/7  
 3FG Att.....31 vs. Washington 7/7  
 3FG Percentage.....51.6 % vs. Washington 7/7  
 Free Throws Made.....16 @ NY 6/4, @ MIN 6/8  
 Free Throws Att.....20 @ New York 6/4  
 FT Percentage.....94.1% @ Minnesota 6/8

Offensive Rebounds.....17 @ Dallas 7/9  
 Defensive Rebounds....32 vs. Washington 7/7  
 Total Rebounds.....43 @ Atlanta 7/14  
 Assists.....24 vs. Washington 7/7  
 Steals.....16 vs. Indiana 7/12  
 Turnovers.....26 vs. Washington 6/18  
 Blocked Shots.....8 @ Las Vegas 5/26  
 Personal Fouls.....27 @ New York 7/20

### OPPONENT HIGHS

Points, Game.....98 vs. New York 6/15  
 Points, First Half.....48 vs. NY 6/15, vs. WSH 6/18  
 Points, Second Half.....50 vs. New York 6/15  
 Points, 1Q.....27 @ Las Vegas 5/26  
 Points, 2Q.....31 vs. New York 6/1  
 Points, 3Q.....27 @ Minnesota 6/8  
 Points, 4Q.....32 vs. Indiana 7/12  
 Points, Overtime.....7 @ Atlanta 7/14

Field Goals Made.....34 @ Connecticut 6/6  
 Field Goals Att.....76 @ Atlanta 7/14  
 Field Goal Percentage..47.1 % vs. New York 6/14  
 3FG Made.....14 vs. WSH 6/18, @ SEA 6/21  
 3FG Att.....28 vs. Washington 6/18  
 3FG Percentage.....72.7% @ New York 7/20  
 Free Throws Made.....27 @ New York 7/20  
 Free Throws Att.....39 @ New York 7/20  
 FT Percentage.....100.0% @PHX 6/14,@DAL 7/9

### LOS ANGELES SPARKS LOWS

-Points, Game.....52 vs. Washington 6/18  
 -Points, First Half.....27 vs. Washington 6/18  
 -Points, Second Half.....25 vs. Washington 6/18  
 -Points, 1Q.....10 vs. Washington 6/18  
 -Points, 2Q.....8 @ Las Vegas 5/26  
 -Points, 3Q.....10 @ Seattle 6/21  
 -Points, 4Q.....13 vs. Dallas 7/18  
 -Points, Overtime.....12 @Atlanta 7/14

-Field Goals Made.....19 vs. Washington 6/18  
 -Field Goals Att.....61 @ Seattle 6/21  
 -Field Goal Percentage...28.8% vs. Washington 6/18  
 -3FG Made.....3 vs. Washington 6/18  
 -3FG Att.....13 @ Las Vegas 5/26  
 -3FG Percentage.....15.8% vs. Washington 6/18  
 -Free Throws Made.....6 vs. NY 6/15, @DAL 7/9  
 -Free Throws Att.....7 vs. NY 6/15, @ DAL 7/9  
 -FT Percentage.....61.1% vs. Washington 6/18

-Offensive Rebounds.....5 @ PHX 6/14, @ SEA 6/21, @NY 7/20  
 -Defensive Rebounds.....18 @ CT 6/6, @ IND 7/12  
 -Total Rebounds.....25 @ Connecticut 6/6  
 -Assists.....10 vs. Washington 6/18  
 -Steals.....2 @ Phoenix 6/23  
 -Turnovers.....5 @ Atlanta 7/14  
 -Blocked Shots.....1 vs. Washington 6/18  
 -Personal Fouls.....12 vs. WSH 6/18, @ DAL7/9

### OPPONENT LOWS

-Points, Game.....66 @ Atlanta 7/23  
 -Points, First Half.....31 vs. Connecticut 5/31  
 -Points, Second Half.....32 @ Phoenix 6/14  
 -Points, 1Q.....12 @ Atlanta 7/14  
 -Points, 2Q.....12 vs. Connecticut 5/31  
 -Points, 3Q.....11 vs. Washington 7/7  
 -Points, 4Q.....15 @ATL 7/14, @ATL 7/23  
 -Points, Overtime.....7 @ Atlanta 7/14

-Field Goals Made.....24 vs. CT 5/31, vs. CHI 6/30, @NY 7/20  
 -Field Goals Att.....52 @ New York 7/20  
 -Field Goal Percentage..30.8% vs Connecticut 5/31  
 -3FG Made.....2 @ATL 7/14, @ATL 7/23  
 -3FG Att.....11 @ New York  
 -3FG Percentage.....9.5% @ Atlanta 7/23  
 -Free Throws Made.....9 vs. Las Vegas 5/27  
 -Free Throws Att.....12 vs. Las Vegas 5/27  
 -FT Percentage.....64% vs. Connecticut 5/3

## HEAD COACH DEREK FISHER



Derek Fisher was named the 12th head coach of the Los Angeles Sparks on December 5, 2018. Fisher is a Los Angeles basketball legend, playing 18 seasons in the NBA and winning five championships with the Los Angeles Lakers. Fisher was drafted 24th overall by the Lakers in 1996, and played alongside Kobe Bryant and Shaquille O'Neal en route to three consecutive titles from 2000-2002. He later added two more rings in 2009 and 2010 with Los Angeles. Fisher also played for the Golden State Warriors, Utah Jazz, Dallas Mavericks and Oklahoma City Thunder.

Fisher's accolades include holding the all-time NBA record for playoff game appearances (259). He's also known for hitting a buzzer-beater with 0.4 seconds left against the San Antonio Spurs in Game 5 of the 2004 Western Conference Semifinals as a member of the Lakers. In his time as a player, he served as president of the players' union from 2006-2013.

After finishing the 2013 season with the Thunder, Fisher transitioned to the sidelines, being named head coach of the New York Knicks on June 10, 2014. Fisher coached into the 2015-2016 season with New York, helping develop then-rookie Kristaps Porzingis.

Fisher is a native of Little Rock, Arkansas where he attended Parkview Arts and Science Magnet High School, lettering in basketball. He then attended the University of Arkansas at Little Rock, where he finished his four-year career second all-time in school history in points (1,393), assists (472) and steals (189). His senior year, he was named Sun Belt Conference Player of the Year.

In the spring of 2016, Fisher became a television analyst for TNT, NBA TV and later Spectrum SportsNet as an in-studio analyst for the Lakers.



## ASSISTANT COACHES

### Fred Williams



Fred Williams was named assistant coach of the Los Angeles Sparks on Jan. 22, 2019 and brings over 35 years of collegiate and professional coaching experience. Most recently, Williams served as the Dallas Wings, previously Tulsa Shock, head coach from 2014-2018 where he coached WNBA All-Stars Skylar Diggins and Liz Cambage.

Williams launched his coaching career in 1983 as an assistant coach at USC where he coached standouts Cynthia Cooper, Pamela McGee, Cheryl Miller, Lisa Leslie and Tina Thompson. Williams helped lead the Trojans to back-to-back NCAA titles in 1983 and 1984 before serving as head coach from 1995-1997.

In addition to his time in Dallas, Williams previously served as head coach of the Utah Starzz from 1999-2001. Williams then spent six seasons with the Atlanta Dream, winning three WNBA Eastern Conference Championships. Williams took over Atlanta's head coach in 2012 and led the Dream to the WNBA finals in 2013.

Williams played for Boise State men's basketball program from 1976-1979 and averaged 12.0 points and 5.8 assists in his final season. The All-Big Sky Conference point guard played briefly in the NBA for the Utah Jazz before transitioning to a role on the sidelines. He also served as an advance scout for the Washington Mystics, Utah Jazz, Seattle Supersonics and Sacramento Kings.

Off the court, Williams is an avid musician who produces jazz music under the name "Freddy Bass Williams." He has released two jazz albums titled "Game Time" and "My Gift to You." Williams is originally from Inglewood, California, but currently resides in Irving, Texas with his wife Bo and their five children.

### Latricia Trammell



Latricia Trammell was named assistant coach of the Los Angeles Sparks on Jan. 22, 2019. Trammell most recently served as an assistant coach for the San Antonio Stars in 2017 where she worked with the first overall pick Kelsey Plum.

Trammell also served as head coach at Oklahoma State University, producing an 85-10 record with the Stars. She led the team to back-to-back NAIA Division I women's basketball national championships in 2014 and 2015, which earned her National Coach of the Year honors in those two years. After her two titles at OCU, Trammell transitioned to Division I basketball and became an assistant coach for Georgia State from 2015-2017 before transitioning to the WNBA. Trammell holds a 255-131 overall high school and college coaching record in her 24 years on the sidelines.

The Oklahoma native debuted as a head coach when she took over the job at Western State (Colo.) University. Trammell spent five seasons with the Mountaineers and built Western State to be a top contender in the Rocky Mountain Athletic Conference. Trammell's team notched a 105-76 record and made five consecutive RMAC Shootout appearances, catapulting her to become the third winningest coach in program history.

Trammell formally served on the WBCA National Convention Advisory Board and on the voting committee for USA Today/ESPN D-II Top 25. The Seminole, Oklahoma native is also a frequent basketball clinician and was a former player for both Seminole State College and East Central Oklahoma.

### Jamal Lovell



The Los Angeles Sparks named Jamal "Dash" Lovell their player development assistant coach on March 4, 2019. Lovell is a professional basketball skills trainer bringing over 11 years of experience working with NBA, WNBA and NCAA athletes, including Candace Parker, Paul George and Dwyane Wade.

Lovell is currently involved with high-profile training clinics in Los Angeles, New York and Miami. In total, Lovell has helped 22 players play NCAA Division I basketball and has worked with over 30 NBA and WNBA players. Lovell, who's known for his training brand DashLetics, believes that aggressiveness, balance and footwork are the key components for success on the court.

#0	ALANA BEARD	GUARD/FORWARD	5-11	5/14/84	DUKE	13TH SEASON
----	-------------	---------------	------	---------	------	-------------

**2019 Regular Season Averages:**

G-GS	PPG	RPG	APG	SPG	BPG	MPG	FG%	3FG%	FT%
7-3	3.6	1.6	2.0	1.0	0.1	16.6	38.5	0	83.3

	2019 Season Highs	Career Highs	Playoff Career Highs
PTS	8	33, at PHX 6/4/08	22, at CT 9/29/04
REB	3	10, Twice	9, at PHX 9/21/13 (Twice)
AST	4	10, at SA 6/28/12	7, vs MIN 10/14/16 (Twice)
STL	5	7, 3 Times	4, vs MIN 9/20/15 (Twice)
BLK	1	4, Twice	4, at CT 9/29/04
FGM	3	13, vs. SEA 7/23/06	9, at CT 9/29/04
3FGM	0	6, at ATL 6/3/08	1, vs. MIN 10/14/16 (6 times)
FTM	1	11, Twice	7, at CT 9/27/04
MINS	23:27	48, vs. IND 6/18/05	39, at PHX 9/21/13



## GAME BY GAME STATS

[illegible]





#2	RIQUNA WILLIAMS	GUARD	5-7	05/28/90	MIAMI (FLA.)	6TH SEASON
----	-----------------	-------	-----	----------	--------------	------------

**2019 Regular Season Averages:**

G-GS	PPG	RPG	APG	SPG	BPG	MPG	FG%	3FG%	FT%
15 - 6	11.5	2.7	1.7	1.3	0.1	25.4	37.7	40.0	88.9

	2019 Season Highs	Career Highs	Playoff Career Highs
PTS	25	51, vs. SA 9/8/13	17, vs MIN 8/21/18
REB	5	9, vs. SEA 9/12/13	3, vs MIN 8/21/18
AST	4	6 (3 Times)	1, vs. vs MIN 8/23/18 (3 times)
STL	2	5 (3 Times)	2, vs MIN 8/21/18
BLK	1	2 (5 Times)	--
FGM	7	17, SA 9/8/13	3, vs MIN 8/21/18
3FGM	5	8, vs. SA 9/8/13	3, vs MIN 8/21/18
FTM	7	18, at ATL 7/7/15	2, vs MIN 8/21/18 (Twice)
MINS	40	40, ATL 7/14/19	26, vs MIN 8/23/18



## GAME BY GAME STATS

[illegible]

#3	CANDACE PARKER	FORWARD/CENTER	6-4	4/19/86	TENNESSEE	11TH SEASON
----	----------------	----------------	-----	---------	-----------	-------------

**2019 Regular Season Averages:**

G-GS	PPG	RPG	APG	SPG	BPG	MPG	FG%	3FG%	FT%
7 - 7	8.9	6.4	2.7	1.0	0.6	23.4	31.7	27.8	76.5

	2019 Season Highs	Career Highs	Playoff Career Highs
PTS	18	40, vs HOU 7/9/08	33, vs. MIN 10/7/12
REB	11	20, at SA 6/1/13	18, at PHO 9/25/09
AST	4	11, at WAS 6/15 /18	11, at PHO 9/17/17
STL	4	8, vs IND 8/18/15	5, vs. MIN 9/29/17
BLK	2	9, vs TUL 6/20/12	4, at MIN 10/4/17 (5 Times)
FGM	6	15, vs HOU 7/9/08	14, vs. MIN 10/7/12
3FGM	2	5, Twice	3, at CHI 10/4/16 (4 Times)



## GAME BY GAME STATS

[illegible]



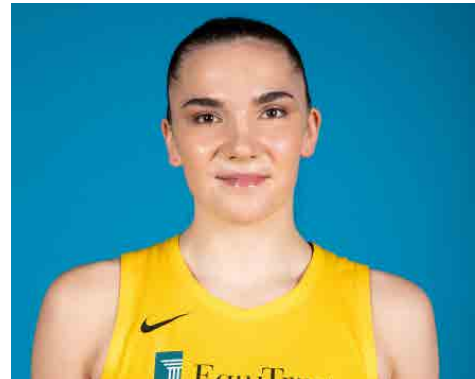


#7	MARIA VADEEVA	FORWARD/CENTER	6-4	6/16/98	RUSSIA	2ND SEASON
----	---------------	----------------	-----	---------	--------	------------

**2019 Regular Season Averages:**

G-GS	PPG	RPG	APG	SPG	BPG	MPG	FG%	3FG%	FT%
1-1	24.0	5.0	1.0	2.0	3.0	24.0	.55	50.0	0

	2019 Season Highs	Career Highs	Playoff Career Highs
PTS	24	24, at LV 5/26/19	2, at WSH 8/23/18
REB	5	7, at LV 6/29/18	--
AST	1	2, vs. DAL 6/26/18	--
STL	2	2, @ DAL 6/22/18	--
BLK	3	3, vs. DAL 6/26/18	--
FGM	11	11, at LV 5/26/19	1, at WSH 8/23/18
3FGM	2	2, 2 Times	--
FTM	0	3, at LV 6/29/18	--
MINs	24	24, at LV 5/26/19	3, at WSH 8/23/18



## GAME BY GAME STATS

[illegible]

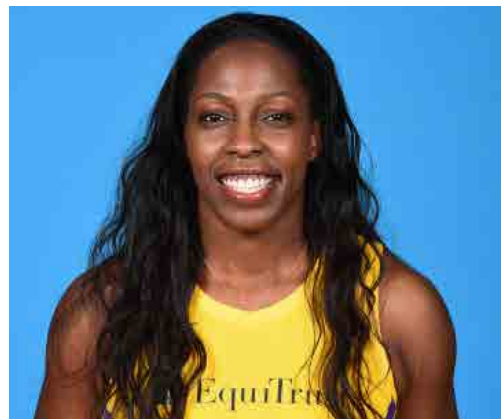


#12	CHELSEA GRAY	GUARD	5-11	10/8/92	DUKE	4TH SEASON
-----	--------------	-------	------	---------	------	------------

**2019 Regular Season Averages:**

G-GS	PPG	RPG	APG	SPG	BPG	MPG	FG%	3FG%	FT%
19-19	13.2	4.1	5.5	1.2	0.1	31.4	40	35.9	94.7

	2019 Season Highs	Career Highs	Playoff Career Highs
PTS	29	29, at NY 6/4/19	27, at MIN 9/24/17
REB	10	10, vs. WAS 7/7/19	6, vs. PHO 9/14/17
AST	13	13, vs WAS 7/7/19	9, vs. MIN 10/1/17
STL	5	6, at MN 5/20/18	3, at MIN 10/4/17 (Twice)
BLK	2	3, at Chi 6/17/18	2, vs. MIN 9/29/17
FGM	10	11, at NY 8/14/18	10, at MIN 9/24/17
3FGM	4	5, San Antonio 8/22/17	4, at MIN 9/24/17 (3 times)
FTM	6	6, vs MIN 9/6/16	6, at MIN 10/9/16
MINS	41:03	48, at CHI 8/18/17	38, vs. PHO 9/14/17



## GAME BY GAME STATS

[illegible]

#13	CHINEY OGWUMIKE	FORWARD/CENTER	6-4	03/21/92	STANFORD	3RD SEASON
-----	-----------------	----------------	-----	----------	----------	------------

**2019 Regular Season Averages:**

G-GS	PPG	RPG	APG	SPG	BPG	MPG	FG%	3FG%	FT%
19-13	11.7	7.4	1.2	1.2	1.0	26.5	47.9	33.3	81.6

	2019 Season Highs	Career Highs	Playoff Career Highs
PTS	26	30, vs. SEA 6/15/18	2, vs. PHX 8/23/18
REB	14	17, vs. NY 6/29/14	3, vs. PHX 8/23/18
AST	4	4, vs. NY 6/14/19	1, vs. PHX 8/23/18
STL	3	4, two times	2, vs. PHX 8/23/18
BLK	2	7, vs. DAL 7/20/16	–
FGM	9	13, vs. SEA 6/15/18	1, vs. PHX 8/23/18
3FGM	1	1, Twice	–
FTM	8	8, Twice	–
MINS	36	40, two times	19



## GAME BY GAME STATS

[illegible]



#21	KALANI BROWN	CENTER	6-7	03/21/97	BAYLOR	R-SEASON
-----	--------------	--------	-----	----------	--------	----------

**2019 Regular Season Averages:**

G-GS	PPG	RPG	APG	SPG	BPG	MPG	FG%	3FG%	FT%
18-0	5.2	3.9	0.6	0.3	0.8	15.3	44.9	-	80

	2018 Season Highs	Career Highs	Playoff Career Highs
PTS	12	12, Twice	–
REB	8	8, at ATL 7/23/19	–
AST	2	2, @ SEA 6/21/19	–
STL	1	1, @LV 5/26/19	–
BLK	3	3, @CHI 6/30/19	–
FGM	4	4, vs. LV (6/27/19)	–
3FGM	--	--	–
FTM	4	4, vs. LV (6/27/19)	–
MINS	22:30	22:30, vs. LV (6/27/19)	–



## GAME BY GAME STATS

[illegible]



#30	NNEKA OGWUMIKE	FORWARD	6-2	7/2/90	STANFORD	7TH SEASON
-----	----------------	---------	-----	--------	----------	------------

**2019 Regular Season Averages:**

G-GS	PPG	RPG	APG	SPG	BPG	MPG	FG%	3FG%	FT%
18-18	16.6	9.4	2.0	1.8	0.6	30.1	47.2	41.7	83.9

	2019 Season Highs	Career Highs	Playoff Career Highs
PTS	31	38 vs. ATL 6/30/16	27, vs. CHI 9/28/16
REB	15	20, at IND 7/12/12	14, vs. PHO 9/19/13
AST	5	8, Twice	6, vs. CHI 10/28/16
STL	6	6, Twice	4, at CHI 10/4/16
BLK	2	5 vs. ATL 6/30/16	3, at CHI 10/4/16
FGM	11	13 vs. ATL 6/30/16	11, vs. CHI 9/28/16
3FGM	5	5 vs. WAS 7/7/19	2, vs. MIN 10/14/16
FTM	5	14 vs. WAS, 9/3/15	7, vs. MIN 8/21/18(Twice)
MINS	37	47 vs. CHI 8/18/17	38, at MIN 9/18/15



## GAME BY GAME STATS

[illegible]

