



SPARKS GAME NOTES

Los Angeles Sparks (19-8) at Washington Mystics (16-10)
 Wednesday, August 16, 2017 | Capital One Arena | 4:00 pm (PST)
 Overall Game #28, Road Game #15
 ESPN 2

2017 SCHEDULE

Date	Opponent	Time/Result	Record
5/2	at New York	^L 65-81	--
5/7	at Connecticut	^L 62-79	--
5/6	SAN ANTONIO	^W 73-59	--
5/13	SEATTLE	W 78-68	1-0
5/19	WASHINGTON	W 99-89	2-0
5/24	at Indiana	L 90-93	2-1
5/27	at Atlanta	L 73-75	2-2
5/30	at New York	W 90-75	3-2
6/6	CHICAGO	W 79-70	4-2
6/9	at Dallas	L 90-96	4-3
6/10	at Phoenix	W 89-79	5-3
6/13	DALLAS	W 97-87	6-3
6/15	SAN ANTONIO	W 80-75	7-3
6/18	PHOENIX	W 90-59	8-3
6/24	at Indiana	W 84-73	9-3
6/27	at Connecticut	W 87-79	10-3
6/30	at Atlanta	W 85-76	11-3
7/2	WASHINGTON	W 76-69	12-3
7/6	at Minnesota	L 77-88	12-4
7/8	at Seattle	L 69-81	12-5
7/13	CONNECTICUT	W 87-77	13-5
7/17	INDIANA	W 80-62	14-5
7/20	CHICAGO	L 80-82	14-6
7/25	SEATTLE	W 68-60	15-6
7/28	at San Antonio	W 85-73	16-6
7/30	DALLAS	W 95-74	17-6
8/4	NEW YORK	W 87-74	18-6
8/6	at Dallas	L 79-85	18-7
8/11	at Minnesota	W 70-64	19-7
8/13	at New York	L 69-83	19-8
8/16	at Washington	4:00	
8/18	at Chicago	5:30	
8/22	SAN ANTONIO	7:30	
8/24	at Phoenix	6:00	
8/27	MINNESOTA	4:00	
9/1	ATLANTA	7:30	
9/3	CONNECTICUT	1:00	

*All times Local. ^ Preseason

SPARKS PR CONTACT

Christy Calvin

Director, Public Relations and Communications

CCalvin@LA-Sparks.com

Cell: (424) 385-3582

Matthew Warren

Coordinator, Public Relations and Communications

MWarren@LA-Sparks.com

Cell: (562) 233-4325

MEDIA AVAILABILITY

Pre-Game: 30 minutes, 1 1/2 hours prior to tip-off.

Post-Game: 30 minutes, 10 minutes after the game.

LOS ANGELES INJURY REPORT

Essence Carson is listed day-to-day with a right elbow strain. Riquana Williams is listed day-to-day with a left knee strain.

LOS ANGELES SPARKS PROBABLE STARTERS

G/F	0	ALANA BEARD							5-11		160	11			
GP/S	27/27	PTS	7.6	REB	3.1	AST	2.4	STL	2.0	FG%	52.8	3FG%	27.8	MIN	31.9

2017 HIGHLIGHTS:

-League leader in steals, averaging 2.0 spg and has at least one steal in 25 of 27 games this season and is fifth in field goal % with 54.5%.

-Played 31 minutes, shooting 0-4 from the field, had 3 rebounds, 2 assists, 1 steal, 2 blocks, and did not score at New York on 8/13.

-Played 34 minutes, shooting 1-3 from the field, had 5 rebounds, the game high with 3 steals, and scored 2 points at Minnesota on 8/11.

-Played 28 minutes, shot 2-3 from the field, 1-3 from the free-throw line, had 2 assists, 2 steals, and scored 5 points at Dallas on 8/6.

F	30	NNEKA OGWUMIKE							6-2	174	5				
GP/S	27/27	PTS	18.7	REB	7.7	AST	2.0	STL	1.7	FG%	55.1	3FG%	36.4	MIN	31.5

2017 HIGHLIGHTS:

-Tied for third in the league in steals averaging 1.7 spg, and fourth in field goal % with 55.7%.

-Has scored in double figures in 26 of 27 this season and has scored 20+ points in 15 of those contests.

-Named 2017 All-Star Reserve.

-Played 32 minutes, shooting 5-13 from the field, perfect 2-2 from the free throw line, had 6 rebounds, 3 assists, and scored 12 points at New York on 8/13.

-Nneka's double figure point streak of 43 games in the regular season (started on June 30, 2016 vs. Atlanta when she scored a career high 38 points) ended in Minnesota on 8/11.

-Played 37 minutes, shot 1-8 from the field, 1-1 from the free-throw line, had 8 rebounds, 4 assists, 1 steal, and scored a season low 3 points (her 3000 career point) at Minnesota on 8/11.

F/C	3	CANDACE PARKER							6-4	175	9				
GP/S	26/26	PTS	16.6	REB	8.4	AST	4.3	STL	1.5	FG%	47.5	3FG%	35.7	MIN	30.7

2017 HIGHLIGHTS:

-Fourth in the league in blocks, averaging 1.9 bpg.

-Has scored in double figures in 24 of 26 games this season.

-Named WNBA Player of the Week for 6/18, 7/2, 7/30 and named 2017 All-Star Starter for Western Conference.

-Awarded 2017 ESPY for Best WNBA Player.

-Recorded the league's sixth triple-double at San Antonio on 7/28.

-Played 30 minutes, shooting 4-12 from the field, 2-7 from 3-point range, perfect 4-4 from the free throw line, had the game high 7 rebounds, 2 assists, game high 3 steals, 2 blocks, and scored 14 points at New York on 8/13.

-Played 32 minutes, shooting 5-12 from the field, 3-6 from 3-point range, 6-7 from the free-throw line, had the team high with 10 rebounds, 3 assists, 1 steal, 2 blocks, and scored 19 points for her 8th double-double this season at Minnesota on 8/11.

G 1 ODYSSEY SIMS 5-8 160 3															
GP/S 24/7	PTS 7.9	REB 1.7	AST 2.8	STL 1.2	FG% 42.5	3FG% 15.4	MIN 21.5								

2017 HIGHLIGHTS:

-Started for the seventh straight game, playing 34 minutes, shooting 7-12 from the field, 4-5 from the free throw line, had 2 rebounds, game high 5 assists, 1 steal, 1 block, and led the Sparks scoring 18 points at New York on 8/13.

-Played a season high 36 minutes, shot 6-17 from the field, 1-6 from 3-point range, 1-1 from the free-throw line, had 2 rebounds, team high 5 assists, 1 block, and scored 14 points at Minnesota on 8/11.

-Played 33 minutes, shot 4-11 from the field, perfect 6-6 from free-throw line, had 3 rebounds, had 1 steal, and scored 14 points at Dallas on 8/6.

-Started for the fourth straight game, playing a season high 35 minutes, shooting 7-16 from the field, 1-3 from 3-point range, tied a season high 5-5 from the free-throw line, had 2 rebounds, 2 assists, and was the second highest scorer with 20 points against New York on 8/4.

The following statistics are per game averages for the 2010-2011 season.															
G	12	CHELSEA GRAY							5-11	170	2				
GP/S	27/27	PTS	15.1	REB	3.3	AST	4.2	STL	0.9	FG%	50.7	3FG%	45.3	MIN	32.9

2017 HIGHLIGHTS:

-Has scored in double figures in 22 of 27 games this season.

-Second in the league in three-point %, 45.3% and tied for third in the league averaging 32.9 minutes.

-Name 2017 All-Star Reserve.

-Played a team high 35 minutes, shooting 5-10 from the field, 3-6 from 3-point range, perfect 2-2 from the free throw line, had 1 rebound, 2 assists, 1 block, and scored 15 points at New York on 8/13.

-Played a career and season high tying 37 minutes, shot 8-17 from the field, 2-5 from 3-point range, perfect 5-5 from the free-throw line, had 3 rebounds, 3 assists, 2 steals, and scored the game high 23 points at Minnesota on 8/11.

-Played 36 minutes, shooting 3-11 from the field, perfect 6-6 from the free-throw line, had a season high 8 rebounds, game high 4 assists, 1 steal, and scored 12 points at Dallas on 8/6.

LASparks.com
 @LA_Sparks

WNBA CURRENT STANDINGS AS OF 8/14/17

EASTERN CONFERENCE	RECORD	WESTERN CONFERENCE	RECORD
Connecticut Sun - x	17-9	Minnesota Lynx - x	21-4
Washington Mystics	16-10	<u>Los Angeles Sparks - x</u>	<u>19-8</u>
New York Liberty	15-12	Phoenix Mercury	14-13
Chicago Sky	11-16	Dallas Wings	13-16
Atlanta Dream	10-18	Seattle Storm	11-16
Indiana Fever	9-19	San Antonio Stars	7-22

x: Clinched Playoff Berth

TEAM RECORDS

	Record	Home	Road	OT	2OT
Overall	(19-8)	(12-1)	(7-7)	(0-0)	(0-0)
West	(9-4)	(6-0)	(3-4)	(0-0)	(0-0)
East	(10-4)	(6-1)	(4-3)	(0-0)	(0-0)
Streaks:	(0-1)	(3-0)	(0-1)	--	--

LOS ANGELES SPARKS ROSTER

NO	PLAYER	POS	HT	WT	DOB	FROM	YRS
0	Alana Beard	G-F	5-11	160	5/14/82	Duke	11
17	Essence Carson	F-G	6-0	163	7/28/86	Rutgers	9
26	Maimouna Diarra	C	6-6	198	1/30/91	Senegal	R
12	Chelsea Gray	G	5-11	170	10/8/92	Duke	2
7	Sandrine Gruda	F-C	6-4	185	6/25/87	France	5
33	Tiffany Jackson-Jones	F	6-3	185	4/26/85	Texas	8
42	Jantel Lavender	C	6-4	185	11/12/88	Ohio State	6
30	Nneka Ogumike	F	6-2	174	7/2/90	Stanford	5
3	Candace Parker	F-C	6-4	175	4/19/86	Tennessee	9
1	Odyssey Sims	G	5-8	160	7/13/92	Baylor	3
24	Sydney Wiese	G	6-0	150	6/16/95	Oregon State	R
2	Riquna Williams	G	5-7	165	5/28/90	Miami (FLA)	4

BASKETBALL OPERATIONS STAFF

Head Coach	Brian Agler (Whittenberg)
Assistant Coach	Tonya Edwards (Tennessee)
Assistant Coach	Bobbie Kelsey (Stanford)
Athletic Trainer	Courtney Watson (California)
Strength-and-Condition Coach	Kelly Dormandy (Springfield)

PRONUNCIATION GUIDE

Brian Agler	AGG-ler
Alana Beard	ah-LAY-nah
Nneka Ogumike	NEH-kuh Oh-gwoo-MIH-kay
Sydney Wiese	WEECE (rhymes with REESE)
Riquna Williams	rih-QUAHN-uh

HOW THE 2017 LOS ANGELES SPARKS WERE BUILT

DRAFT

Candace Parker (1st pick, 2008)
Jantel Lavender (5th pick, 2011)
Nneka Ogumike (1st pick, 2012)
Sydney Wiese (11th pick, 2017)

FREE AGENCY

Alana Beard (2/8/12)
Essence Carson (3/31/16)
Tiffany Jackson-Jones (2/7/17)
Maimouna Diarra (5/12/17)
Sandrine Gruda (7/28/17)

TRADE

Riquna Williams (from DAL 3/1/16)
Chelsea Gray (from CON 4/15/16)
Odyssey Sims (from DAL, 2/17/17)

RECENT TRANSACTIONS

July 28, 2017	Agree to contract with F-C Sandrine Gruda
July 3, 2017	Waived Ify Ibekwe
May 12, 2017	Agree to contract with Maimouna Diarra
April 3, 2017	Named Bobbie Kelsey Assistant Coach
February 15, 2017	Agree to contract extension with F Nneka Ogumike and Jantel Lavender
February 9, 2017	Agree to contract extension with F Candace Parker
February 8, 2017	Re-signed G Alana Beard, Signed C Avery Warley-Tablert, F Ify Ibekwe and G Jamie Weisner
February 7, 2017	Agree to contract with Tiffany Jackson-Jones



LOS ANGELES SPARKS MEDIA HEADSHOTS



#0 Alana Beard
Guard/Forward



#17 Essence Carson
Forward/Guard



#26 Maimouna Diarra
Center



#12 Chelsea Gray
Guard



#7 Sandrine Gruda
Forward/Center



#33 Tiffany Jackson-Jones
Forward



#42 Jantel Lavender
Center



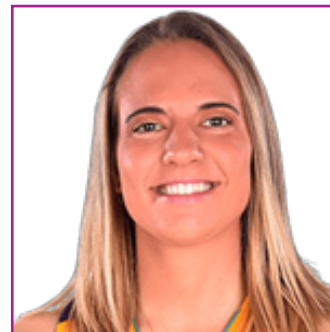
#30 Nneka Ogumike
Forward



#3 Candace Parker
Forward/Center



#1 Odyssey Sims
Guard



#24 Sydney Wiese
Guard



#2 Riquna Williams
Guard



Brian Agler
Head Coach



Tonya Edwards
Assistant Coach



Bobbie Kelsey
Assistant Coach



Courtney Watson
Athletic Trainer



Kelly Dormandy
Strength & Conditioning
Coach

CONTINUED LAST GAME RECAP: AUGUST 13, 2017 VS NEW YORK LIBERTY

LAST GAME INDIVIDUAL GAME PERFORMANCE		
LOS ANGELES	HIGHS	NEW YORK
Sims - 18	POINTS	Charles -21
Parker - 7	REBOUNDS	Charles, Vaughn, Prince -7
Sims - 5	ASSISTS	Hartley
Beard, Parker - 2	BLOCKS	Prince, Stokes, Rodgers, R. Allen - 1
Gray - 35	MINUTES	Charles - 38

KEY FACTORS		
LOS ANGELES	HIGHS	NEW YORK
10	TO PTS	11
24	Points in the Paint	28
5	2nd Chance Pts	19
3	Fast Break Pts	2
10	Bench	12

2017 REGULAR SEASON STATISTICS		
LOS ANGELES	HIGHS	NEW YORK
Ogwumike - 18.7	POINTS	Charles - 20.0
Parker - 8.4	REBOUNDS	Charles - 9.3
Parker - 4.3	ASSISTS	Prince - 3.2
Beard - 2.0	STEALS	Prince - 1.6
Parker - 1.9	BLOCKS	Stokes - 1.2
Gray - 32.9	MINUTES	Charles - 32.9

WASHINGTON MYSTICS

SERIES NOTES

All-Time Record: 28-12
 All-Time Home Record vs Mystics: 15-5
 All-Time Road Record vs. Mystics: 13-7
 Current Streak: WON 6
 Current Home Streak: WON 4
 Current Road Streak: WON 2

Last Win: vs WSH (7/2/17), 76-69 @ Staples Center
 Last Loss: @ WSH (6/23/15), 80-84 @ Verizon Center
 Most Points: LAS 101, (6/18/12), WSH 92 (6/1/14)
 Fewest Points: LAS 53 (Twice), WSH 50 (7/14/01)
 Largest Victory: LAS 31 (6/18/12), WSH 15 (6/24/10)

WHAT TO LOOK FOR:

-Los Angeles will look to sweep the season series against Washington.
 -The Mystics are 3.5 game back from the Sparks for second place.
 -Ogwumike and Delle Donne lead their respective teams in scoring in the season series with Ogumike averaging 19.0 points and Delle Donne averaging 24.5.

Last Game Recap:

Candace Parker and Chelsea Gray scored 17 points apiece and the Los Angeles Sparks rallied from a 17-point halftime deficit to beat the Washington Mystics 76-69 in their second meeting of the season on July 2.

Parker grabbed 11 rebounds, Nneka Ogumike - who played the entire second half with four fouls - had 15 points and Alana Beard added 13 for Los Angeles (12-3). The Sparks have won six in a row against the Mystics and eight straight overall.

Washington (10-6) led 47-30 at the break and had a 14-point lead with six minutes left in the third quarter after Krystal Thomas' putback of her own missed layup. Riquna Williams hit back-to-back 3-pointers to ignite a 20-4 run that gave L.A. its first lead since the opening minutes, 59-57 with 8:30 remaining. Parker scored seven points during that stretch and the Sparks never again trailed.

Kristi Tolliver's running bank shot made it 69-all with 3:03 left but Beard answered with a jumper and the Mystics went 0 for 8 from the field - and had a shot-clock violation - from there.

Elena Delle Donne led Washington with 22 points, but scored just two in the final 17-plus minutes.

FINAL

WASHINGTON 69

LOS ANGELES 76

Staples Center, Los Angeles, CA

SCORE 1 2 3 4 OT FINAL

WSH 24 23 10 12 69

LAS 17 13 24 22 76

HIGHLIGHTS

Biggest Lead:

Mystics: 17 | Sparks: 7

Lead Changes: 2 | Times Tied: 7

2017 vs. Washington

May 19 WSH W, 99-89
 July 2 WSH W, 76-69
 August 16 @ WSH 4:00 p.m. PST

NATIONAL BASKETBALL ASSOCIATION

OFFICIAL SCORE'S REPORT
FINAL BOX

Sunday, July 02, 2017 STAPLES Center, Los Angeles, CA
 Officials: #4 Sue Blauch, #45 Tom Mewer, #8 Daryl Humphrey

Game Duration: 1:59
 Attendance: 9,185

VISITOR: Washington Mystics (10-8)

	POS	MIN	FG	FGA	3P	3PA	FT	FTA	OR	DR	TOT	A	PF	ST	TO	BS	+/-	PTS
14	Tieria Ruffin-Pratt	F	24:32	4	8	0	0	2	4	2	1	3	2	3	1	1	0	10
11	Elena Delle Donne	F	29:00	7	16	2	5	8	8	2	3	5	0	4	2	2	0	22
34	Krystal Thomas	C	24:59	3	7	0	0	1	1	4	3	7	0	1	0	1	0	7
4	Taylor Hill	G	22:22	2	9	1	4	0	0	0	4	4	3	1	0	2	0	5
20	Kristi Tolliver	G	30:54	1	6	0	5	2	2	0	3	3	2	3	0	1	0	4
21	Tianna Hawkins		15:59	1	2	1	1	0	0	0	2	2	1	0	0	1	1	3
12	Ivory Latta		18:12	2	6	0	1	8	8	0	1	1	1	0	0	2	0	10
9	Natasha Cloud		17:01	1	6	0	3	0	0	1	2	3	1	2	0	1	0	2
33	Erinna Messersmith		19:01	3	8	0	0	0	0	1	3	4	0	4	2	0	2	8
25	Jessie Simms		DNP - Coach's Decision															
31	Alex Taylor		DNP - Coach's Decision															
32	Shatori Walker-Kimbrough		DNP - Coach's Decision															
			200:00	24	66	4	19	17	19	10	22	32	10	18	5	11	5	89
				36.4 %		21.1 %		89.5 %										

HOME: LOS ANGELES SPARKS (12-3)

	POS	MIN	FG	FGA	3P	3PA	FT	FTA	OR	DR	TOT	A	PF	ST	TO	BS	+/-	PTS
0	Alana Beard	F	35:13	8	7	1	1	0	0	0	5	5	3	3	2	3	1	13
30	Nneka Ogumike	F	30:55	5	8	1	1	4	5	1	4	5	3	4	3	2	1	15
3	Candace Parker	C	35:21	7	15	1	2	2	2	7	4	11	4	1	1	0	1	17
12	Chelsea Gray	G	35:30	5	15	3	5	4	8	1	5	8	3	2	0	0	0	17
2	Riquna Williams	G	21:39	2	5	2	5	0	0	0	1	1	1	1	0	1	0	8
17	Essence Carson		8:54	0	4	0	3	0	0	0	1	1	0	1	0	0	0	0
42	Jantel Lavender		18:47	2	4	0	0	0	0	1	3	4	0	1	0	3	0	4
1	Odyssey Sims		12:39	1	4	0	2	2	2	0	1	1	3	3	1	0	0	4
24	Sydney Wiese		3:02	0	0	0	0	0	0	0	0	0	0	0	0	0	0	0
28	Maimouna Diarra		DNP - Coach's Decision															
25	Ity Isokwe		DNP - Coach's Decision															
33	Tiffany Jackson-Jones		DNP - Coach's Decision															
			200:00	28	66	8	19	12	15	10	24	34	17	16	7	9	3	76
				41.2 %		42.1 %		80.0 %										

SCORE BY PERIOD

1 2 3 4 FINAL
 Mystics 24 23 10 12 69
 Sparks 17 13 24 22 76

Points in the Paint: Mystics 25 (13/27), SPARKS 29 (13/32)
 2nd Chance Points: Mystics 7 (3/10), SPARKS 11 (6/12)
 Fast Break Points: Mystics 0 (0/1), SPARKS 8 (3/8)
 Technical Fouls - Individual: NONE
 SPARKS (1): Acker 4:47 2nd
 Technical Fouls - Defensive Three Second: NONE (1): 5:43 2nd
 SPARKS: NONE

Biggest Lead: Mystics 17, SPARKS 7
 Lead Changes: 2
 Times Tied: 7

WASHINGTON MYSTICS

FINAL

INDIANA	80
WASHINGTON	100
Capital One Arena, Washington, DC	
SCORE	1 2 3 4 OT FINAL
IND	16 20 25 19 80
WAS	28 21 26 25 100

HIGHLIGHTS

Biggest Lead:

Fever: 0 | Mystics: 27

Lead Changes: 0 | Times Tied: 0

NATIONAL BASKETBALL ASSOCIATION

Saturday, August 12, 2017 Capital One Arena, Washington, DC
Officials: #6 Karleena Tobin, #7 Billy Smith, #8 Daryl Humphrey

OFFICIAL SCORER'S REPORT FINAL BOX

Game Duration: 2:37
Attendance: 7,337

VISITOR: Indiana Fever (9-19)

	POS	MIN	FG	FGA	3P	3PA	FT	FTA	OR	DR	TOT	A	PF	ST	TO	BS	+/-	PTS
17 Erica Wheeler	F	25:06	3	12	2	6	0	0	1	2	3	8	3	2	2	0	0	8
1 Jazmon Gwathmey	F	25:41	3	12	1	6	3	4	1	3	4	2	5	0	2	0	0	10
11 Natalie Achonwa	C	19:27	2	6	0	0	1	2	0	0	0	1	1	0	0	1	0	5
25 Marissa Coleman	G	30:32	1	6	1	2	0	0	0	1	1	4	4	0	1	0	0	3
4 Candice Dupree	G	29:45	12	18	0	0	2	2	3	5	8	2	1	3	1	0	0	26
32 Jeanette Pohlen-Mavunga		32:55	3	6	3	4	3	3	0	3	3	2	1	1	2	0	0	12
5 Jennifer Hamson		11:29	1	2	0	0	0	0	1	0	1	0	1	0	0	1	0	2
22 Erica McCall		22:25	5	7	0	1	2	5	2	3	5	2	2	0	2	0	0	12
2 Erlana Larkins		2:39	1	1	0	0	0	0	0	0	0	0	2	0	0	0	0	2
20 Briann January	DND - Right Knee																	
42 Shenise Johnson	NWT - Torn Left ACL																	
3 Tiffany Mitchell	DND - Right Knee																	
200:00			31	70	7	19	11	16	8	17	25	21	20	6	10	2	0	80
			44.3 %		36.8 %		68.8 %		TM REB: 8		TOT TO: 10 (13 PTS)							

HOME: WASHINGTON MYSTICS (16-10)

	POS	MIN	FG	FGA	3P	3PA	FT	FTA	OR	DR	TOT	A	PF	ST	TO	BS	+/-	PTS
33 Emma Meesseman	F	31:30	7	14	1	4	0	0	1	5	6	7	5	1	3	2	0	15
14 Tierra Ruffin-Pratt	F	24:16	1	3	0	0	5	5	0	2	2	1	2	0	1	1	0	7
34 Krystal Thomas	C	24:03	7	8	0	0	6	6	3	11	14	1	3	0	1	1	0	20
32 Shatori Walker-Kimbrough	G	25:58	2	6	2	3	7	8	0	1	1	0	1	2	1	0	0	13
20 Kristi Toliver	G	23:28	4	5	1	2	0	0	0	1	1	6	1	0	4	1	0	9
9 Natasha Cloud		16:55	0	1	0	0	0	0	0	3	3	5	0	0	0	0	0	0
12 Ivory Latta		16:32	5	8	3	4	0	0	0	0	0	1	1	0	0	0	0	13
21 Tianna Hawkins		15:43	3	4	1	1	2	2	1	3	4	1	3	1	1	1	0	9
23 Allison Hightower		12:51	4	8	2	3	0	0	0	1	1	0	1	0	0	0	0	10
31 Asia Taylor		6:32	1	2	0	0	2	4	2	1	3	1	1	0	0	0	0	4
7 Haley Peters		2:12	0	0	0	0	0	0	0	0	0	0	0	0	0	0	0	0
11 Elena Delle Donne	DND - Left Thumb																	
4 Tayler Hill	DND - ACL																	
200:00			34	59	10	17	22	25	7	28	35	23	18	4	11	6	0	100
			57.6 %		58.8 %		88.0 %		TM REB: 4		TOT TO: 11 (16 PTS)							

SCORE BY PERIOD	1	2	3	4	FINAL
Fever	16	20	25	19	80
MYSTICS	28	21	26	25	100

Points in the Paint: Fever 26 (13/26), MYSTICS 40 (20/27)

2nd Chance Points: Fever 10 (5/9), MYSTICS 13 (6/6)

Fast Break Points: Fever 10 (4/4), MYSTICS 5 (1/1)

Technical Fouls - Defensive Three Second

Fever: NONE

MYSTICS (1): 1:08 1st

MEMO: Game delayed for 48 minutes due to court safety.

MEMO: MYSTICS - Thomas, Career High Points (Prev. 15)

Biggest Lead: Fever --, MYSTICS 27

Lead Changes: 0

Times Tied: 0

All-Time Record vs Sky: 18-7
All-Time Home Record vs Sky: 10-3
All-Time Road Record vs. Sky: 8-4
Current Streak: LOST 1
Current Home Streak: LOST 1
Current Road Streak: WON 4

-Los Angeles will look to win the season series 2-1 against Chicago.

-Ogwumike is averaging 22.0 points this season versus Chicago, while Vandersloot is averaging 13.5 against the Sparks.

Stefanie Dolson hit a go-ahead 3-pointer with 13 seconds left and scored 15 points to help the Chicago Sky beat Los Angeles 82-80 on July 20 for the Sparks' first home loss of the season.

After a timeout with 20.4 seconds left, Courtney Vandersloot curled around the defense, drove the baseline and found an open Dolson in the corner for a 3-pointer.

Nneka Ogwumike dribbled into a double team in the lane and her shot was blocked out-of-bounds by Imani Boyette with 4.8 seconds left. Boyette blocked another shot under the basket, and Ogwumike's put-back was short at the buzzer.

Vandersloot had her fourth double-double in six games with 14 points and a career-high 14 assists for Chicago (8-13). Cappie Pondexter scored eight points to reach 6,500 for her career.

Pondexter made a jumper with 7:24 left in the fourth quarter to give Chicago its first lead, 67-65, since 9-8.

Nneka Ogwumike had 24 points and 10 rebounds for Los Angeles.

CHICAGO	82					
LOS ANGELES	80					
Staples Center, Los Angeles, CA						
SCORE	1	2	3	4	OT	FINAL
CHI	21	14	21	26		82
LAS	21	24	15	20		80

Biggest Lead:
Sparks: 10 | Sky: 3
Lead Changes: 9 | Times Tied: 9

Last Win: vs. CHI (6/6/17), 79-70 @ Staples Center
Last Loss: vs. CHI (7/20/17), 80-82 @ Staples Center
Most Points Scored: LAS - 102 (6/6/14), CHI - 94 (6/29/13)
Fewest Points Scored: LAS - 63 (7/29/09), CHI - 55 (5/30/06)
Largest Winning Margin: LAS - 17 (5/22/07), CHI - 12 (3 times)
Largest Losing Margin: LAS - 12 (3 times), CHI - 17 (5/22/07)

June 6 CHI	W, 79-70
July 20 CHI	L, 80-82
August 18 @ CHI	7:30 p.m. PST

OFFICIAL SCORER'S REPORT
FINAL BOX

Thursday, July 20, 2017 STAPLES Center, Los Angeles, CA
Officials: #38 Katie Lukanich. #45 Tom Meyer. #48 Vladimir Vovard-Taddei

Game Duration: 1:58
Attendance: 18,188

		POS	MIN	FG FGA	3P 3PA	FT FTA	OR DR	TOT	A PF	ST TO	BS +/-	PTS
1	Tamara Young	F	29:28	1 8	0 4	5 8	4 3	7 1	3 2	4 0	0 0	7
51	Jessica Brelund	F	20:21	4 8	0 0	0 0	1 6	7 2	1 0	1 1	0 8	5
31	Stephanie Dolson	C	27:32	7 12	1 3	0 0	0 4	4 1	3 0	2 0	0 15	15
14	Allie Gulgley	G	34:23	4 11	3 7	1 2	0 4	4 2	1 1	3 1	0 12	12
22	Courtney Vanderloot	G	37:19	5 8	2 3	2 2	1 4	5 14	1 1	2 0	0 14	14
23	Cappie Ponsleider		11:19	3 7	0 0	2 2	0 0	0 0	2 1	0 0	0 8	8
34	Imani Boyette		18:30	6 7	0 0	0 0	1 1	2 1	2 0	0 2	0 12	12
32	Cheyenne Parker		7:15	1 3	0 0	0 0	0 1	1 0	1 0	0 0	0 2	2
24	Kelsie Hampton		4:42	0 1	0 0	0 0	0 0	0 0	0 0	0 0	0 0	0
2	Kahleiah Copper		9:12	2 3	0 0	0 0	0 1	1 1	0 1	0 0	0 4	4
25	Melaysia Epps	DNP - Coach's Decision										
11	Amber Harris	DNP - Coach's Decision										
			200:00	33 66	8 17	10 12	7 24	31 22	14 8	12 4	0 0	82
				50.0 %	35.3 %	83.3 %	TM REB: 7		TOT TO: 12 (15 PTS)			

	POS	MIN	FG	FGA	3P	3PA	FT	FTA	OR	DR	TOT	A	P	ST	TO	BS	+/-	PTS
17 Essence Carson	F	7:41	0	0	0	0	0	0	0	0	0	0	0	0	0	1	0	0
30 Nikita Ogunnikhe	F	34:08	9	20	2	3	4	4	3	7	10	0	4	0	1	0	0	24
3 Candace Parker	C	35:24	7	14	0	3	5	7	0	8	8	5	0	4	4	1	0	19
0 Alana Beard	G	33:28	1	3	0	0	0	0	0	1	1	3	2	3	0	0	0	2
12 Chelsea Gray	G	34:42	8	12	1	3	0	2	0	1	1	8	0	0	2	0	0	17
2 Rheema Williams		26:15	2	8	2	5	0	0	0	2	2	0	2	0	1	0	0	8
42 Jarriel Lavender		11:38	3	5	1	1	0	0	1	6	7	0	1	0	2	0	0	7
1 Odyssey Sims		15:01	2	3	0	1	1	1	0	1	1	1	1	0	1	0	0	5
24 Sydney Wise		1:43	0	1	0	0	0	0	0	0	0	0	0	0	0	0	0	0
26 Malmona Derra	DNP - Coach's Decision																	
33 Tiffany Jackson-Jones	DNP - Coach's Decision																	
		200:00	32	68	8	18	10	14	4	24	28	15	10	7	11	2	0	80
			48.5 %		37.5 %		71.4 %			TM REB: 7					TOT TO: 12 (17 PTS)			

SPARKS	21	14	21	20	42
SPARKS	21	24	16	20	81

Points in the Pot: Sky 42 (21/38), SPARKS 42 (21/38)
2nd Chance Points: Sky 11 (8/7), SPARKS 8 (4/7)
Fast Break Points: Sky 7 (2/8), SPARKS 0 (0/2)
Technical Fouls - Defensive Three Second
Sky (1): 4-6 3rd
SPARKS: NONE
Biggest Lead: Sky 9, SPARKS 10
Lead Changes: 9
Times Tied: 9

2017 TEAM BOX SCORE

Date	Opponent	MIN	FG-A	PCT	3PM-A	PCT	FTM-A	PCT	OFF	DEF	TOI	AST	STL	BLK	TO	PF	PTS
5/13	SEA	200	33-72	45.8	8-18	44.4	4-8	50.0	5	17	22	20	14	0	11	19	78
5/19	WAS	200	34-62	54.8	10-21	47.6	21-22	95.5	5	20	25	20	8	3	11	15	99
5/24	@IND	200	34-62	54.8	8-15	53.3	14-19	73.7	4	24	28	19	4	3	9	16	90
5/27	@ATL	200	25-60	41.7	4-12	33.3	19-23	82.6	11	21	32	18	3	7	17	20	73
5/30	@NYL	200	31-62	50.0	5-16	31.3	23-27	85.2	7	21	28	16	13	3	11	18	90
6/6	CHI	200	22-64	34.4	4-13	30.8	31-40	77.5	7	25	32	17	13	6	7	15	79
6/9	@DAL	200	36-72	50.0	3-11	27.3	15-15	100	7	22	29	14	7	5	15	20	90
6/10	@PHO	200	31-59	52.5	8-18	44.4	19-27	70.4	4	18	22	22	9	4	11	20	89
6/13	DAL	200	35-61	57.4	5-16	31.3	22-26	84.6	3	24	27	22	9	2	19	29	97
6/15	SAS	200	27-56	48.2	2-12	16.7	24-28	85.7	4	24	28	15	6	4	13	11	80
6/18	PHO	200	32-67	47.8	6-19	31.6	20-23	87.0	9	31	40	22	10	4	13	19	90
6/24	@IND	200	32-60	53.3	8-17	47.1	12-14	85.7	4	27	31	19	9	5	14	21	84
6/27	@CON	200	32-64	50.0	4-12	33.3	19-26	73.1	8	24	32	20	8	7	9	19	87
6/30	@ATL	200	31-60	51.7	8-17	47.1	15-20	75.0	8	25	33	16	9	5	18	17	85
7/2	WAS	200	28-68	41.2	8-19	42.1	12-15	80.0	10	24	34	17	7	3	9	16	76
7/6	@MIN	200	32-66	48.5	4-16	25.0	9-11	81.8	9	19	28	15	9	3	17	18	77
7/8	@SEA	200	26-70	37.1	4-23	17.4	13-14	92.9	9	18	27	10	11	5	11	16	69
7/13	CON	200	31-70	44.3	8-23	34.8	17-20	85.0	9	28	37	20	7	5	15	16	87
7/17	IND	200	34-64	53.1	5-10	50.0	7-9	77.8	5	27	32	19	12	5	12	11	80
7/20	CHI	200	32-66	48.5	6-16	37.5	10-14	71.4	4	24	28	15	7	2	11	10	80
7/25	SEA	200	26-69	37.7	2-13	15.4	14-20	70.0	13	26	39	16	10	4	11	19	68
7/28	@SAS	200	37-67	55.2	4-13	30.8	7-9	77.8	3	26	29	22	7	5	8	14	85
7/30	DAL	200	40-71	56.3	3-17	17.6	12-13	92.3	8	33	41	28	10	2	15	21	95
8/4	NYL	200	32-70	45.7	6-18	33.3	17-22	77.3	5	28	33	16	7	1	6	15	87
8/6	@DAL	200	26-64	40.6	2-15	13.3	25-27	92.6	4	27	31	10	12	4	15	19	79
8/11	@MIN	200	24-64	37.5	77-19	36.8	15-16	93.8	6	24	30	15	7	3	15	17	70
8/13	@NYL	200	26-63	41.3	5-19	26.3	12-13	92.3	4	22	26	16	5	7	10	15	69
8/16	@WAS																
8/18	@CHI																
8/22	SAS																
8/24	@PHO																
8/27	MIN																
9/1	ATL																
9/3	CON																

2017 OPPONENT BOX SCORE

Date	Opponent	MIN	FG-A	PTC	3PM-A	PTC	FTM-A	PTC	OFF	DEF	TOI	AST	STL	BLK	TO	PF	PTS
5/13	SEA	200	26-50	52.0	4-16	25.0	12-12	100	3	24	27	20	4	7	23	16	68
5/19	WAS	200	31-62	50.0	9-24	37.5	18-19	94.7	8	18	26	23	7	1	14	18	89
5/24	@IND	200	36-67	53.7	11-16	68.8	10-14	71.4	7	23	30	16	3	1	8	16	93
5/27	@ATL	200	28-63	44.4	2-12	16.7	17-28	60.7	11	20	31	21	11	5	13	22	75
5/30	@NYL	200	30-66	45.5	9-21	42.9	6-12	50.0	11	19	30	18	7	2	18	21	75
6/6	CHI	200	27-65	41.5	4-13	30.8	12-15	80.0	8	30	38	16	4	4	19	28	70
6/9	@DAL	200	33-71	46.5	6-20	30.0	24-28	85.7	12	22	34	20	10	4	14	18	96
6/10	@PHO	200	29-65	44.6	9-24	37.5	20-23	87.0	11	19	30	16	6	3	14	26	87
6/13	DAL	200	35-61	57.	5-16	31.3	22-26	84.6	3	24	27	22	9	2	10	20	97
6/15	SAS	200	30-67	44.8	5-18	27.8	10-11	90.9	7	24	31	16	6	2	13	20	75
6/18	PHO	200	22-67	32.8	5-26	19.2	10-16	62.5	15	20	35	14	9	3	19	23	59
6/24	@IND	200	27-64	42.2	6-21	28.6	13-15	86.7	6	20	26	11	7	3	12	15	73
6/27	@CON	200	28-77	36.4	8-18	44.4	15-17	88.2	16	26	42	15	3	1	14	21	79
6/30	@ATL	200	31-66	47.0	3-10	30.0	11-20	55.0	9	20	29	25	8	2	14	20	76
7/2	WAS	200	24-66	36.4	4-19	21.1	17-19	89.5	10	22	32	10	5	5	11	18	69
7/6	@MIN	200	34-71	47.9	6-14	42.9	14-19	73.7	15	24	39	19	8	5	15	11	88
7/8	@SEA	200	28-54	51.9	8-15	53.3	17-18	94.4	4	24	28	20	5	3	18	12	81
7/13	CON	200	30-71	42.3	7-18	38.9	10-16	62.5	9	28	37	14	12	0	18	20	77
7/17	IND	200	23-58	39.7	7-19	36.8	9-10	90.0	7	19	26	15	3	3	16	15	62
7/20	CHI	200	33-66	50.0	6-17	35.3	10-12	83.3	7	24	31	22	6	4	12	14	82
7/25	SEA	200	21-53	39.6	5-21	23.8	13-17	76.5	4	24	28	19	8	6	18	18	60
7/28	@SAS	200	26-58	44.8	3-10	30.0	18-20	90.0	5	25	30	17	4	0	12	12	73
7/30	DAL	200	19-66	28.8	6-28	21.4	30-33	90.9	7	14	21	11	10	5	12	13	74
8/4	NYL	200	29-66	43.9	5-22	22.7	11-18	61.1	6	29	35	22	5	3	13	21	74
8/6	@DAL	200	31-79	39.2	4-16	25.0	19-21	90.5	16	31	47	12	6	4	15	22	85
8/11	@MIN	200	26-61	42.6	4-12	33.3	8-11	72.7	7	28	35	16	5	4	16	15	64
8/13	@NYL	200	31-71	43.7	10-22	45.5	11-12	91.7	12	25	37	19	5	4	11	14	83
8/16	@WAS																
8/18	@CHI																
8/22	SAS																
8/24	@PHO																
8/27	MIN																
9/1	ATL																
9/3	CON																

SPARKS 2017 SCORING BREAKDOWN

SPARKS

OPPONENTS

Date	Opponent	Result	Score			1ST		2ND		TOT			1ST		2ND		TOT
				1ST	2ND	HAL	3RD	4TH	HAL		1ST	2ND	HAL	3RD	4TH	HAL	
5/13	SEA	W	78-68	20	18	38	16	24	40	78	21	16	37	12	19	31	68
5/19	WAS	W	99-89	34	25	59	19	21	40	99	22	26	48	22	19	41	89
5/24	@IND	L	90-93	28	27	55	10	25	35	90	23	18	41	27	25	52	93
5/27	@ATL	L	73-75	18	14	32	12	29	41	73	20	9	29	22	24	46	75
5/30	@NYL	W	99-89	16	20	36	30	24	54	90	21	17	38	26	11	37	75
6/6	CHI	W	79-70	18	23	41	15	23	38	79	13	22	35	18	17	35	70
6/9	@DAL	L	90-96	28	22	50	21	19	40	90	16	25	41	23	32	55	96
6/10	@PHO	W	89-87	19	20	39	26	24	50	89	18	22	40	21	26	47	87
6/13	DAL	W	97-87	23	25	48	24	25	49	97	8	27	35	17	35	52	87
6/15	SAS	W	80-75	25	21	46	12	22	34	80	11	15	26	24	25	49	75
6/18	PHO	W	90-59	38	15	53	19	18	37	90	17	19	36	12	11	23	59
6/24	@IND	W	84-73	20	26	46	19	19	38	84	23	17	40	12	21	33	73
6/27	@CON	W	87-79	27	18	45	23	19	42	87	17	22	39	17	23	40	79
6/30	@ATL	W	85-76	23	21	44	27	14	41	85	23	13	36	18	22	40	76
7/2	WAS	W	76-69	17	13	30	24	22	46	76	24	23	47	10	12	22	69
7/6	@MIN	L	77-88	14	22	36	25	16	41	77	25	21	46	22	20	42	88
7/8	@SEA	L	69-81	21	18	39	16	14	30	69	15	22	37	23	21	44	81
7/13	CON	W	87-77	18	28	46	23	18	41	87	32	13	45	12	20	32	77
7/17	IND	W	80-62	22	20	42	19	19	38	80	19	15	34	12	16	28	62
7/20	CHI	L	80-82	21	24	45	15	20	35	80	21	14	35	21	26	47	82
7/25	SEA	W	68-60	21	19	40	11	17	28	68	19	10	29	17	14	31	60
7/28	@SAS	W	85-73	22	17	39	21	25	46	85	12	23	35	19	19	38	73
7/30	DAL	W	95-74	30	19	49	30	16	46	95	20	22	42	18	14	32	74
8/4	NYL	W	87-74	29	15	44	25	18	43	87	23	21	44	11	19	30	74
8/6	@DAL	L	79-85	21	19	40	17	22	39	79	18	23	41	22	22	44	85
8/11	@MIN	W	70-64	20	16	36	21	13	34	70	20	16	36	8	20	28	64
8/13	@NYL	L	69-83	27	8	35	21	13	34	69	16	28	44	18	21	39	83
8/16	@WAS																
8/18	@CHI																
8/22	SAS																
8/24	@PHO																
8/27	MIN																
9/1	ATL																
9/3	CON																

2017 RECORD WHEN...

QUICK OVERVIEW	RECORD
Overall	19-8
Home	12-1
Road	7-7
vs. Western Conference	9-4
vs. Eastern Conference	10-4

BREAKDOWN	RECORD
vs. teams .500+ (day of game)	8-2
vs. teams sub .500 (day of game)	11-6
Games 1-10	7-3
Games 11-20	7-3
Games 21-34	5-2
Pre All-Star Break	14-6
Post All-Star Break	5-2

DAYS OF REST	
Back-to-back games	1-0
1 day between games	3-3
2 days between games	4-1
3 days between games	4-3
4+ days between games	7-1

BY DAY	RECORD	HOME	ROAD
Monday	1-0	1-0	
Tuesday	5-0	3-0	2-0
Wednesday	0-1		0-1
Thursday	2-2	2-1	0-1
Friday	5-1	2-0	3-1
Saturday	3-2	1-0	2-2
Sunday	3-2	3-0	0-2

BY MONTH	RECORD	HOME	ROAD
May	3-2	2-0	1-2
June	8-1	4-0	4-1
July	6-3	5-1	1-2
August	2-2	1-0	1-2
September			

SPARKS RECORD WHEN	RECORD
Shooting 45%+	14-4
Shooting sub 45%	5-4
Opponents shooting 45%+	5-5
Opponents shooting sub 45%	14-3
Bench outscores opponent bench	9-2
Bench outscored by opponent bench	8-6
Bench scoring is tied	2-0
Tied or more points in the paint	14-4
Fewer points in the paint	5-4
Score 70 + points	18-6
Score sub 70 points	1-2
Score 75+ points	17-5
Score sub 75 points	1-3
Opponent scores 75+ points	8-8
Opponent sub 75 points	11-0
More/tied rebounds than opponent	9-1
Fewer rebounds than opponent	10-7

STARTING LINEUPS	RECORD
Alana Beard, Nneka Ogumike, Tiffany Jackson-Jones, Riquna Williams, and Chelsea Gray	1-0
Essence Carson, Nneka Ogumike, Candace Parker, Alana Beard, and Chelsea Gray	9-5
Alana Beard, Nneka Ogumike, Candace Parker, Riquna Williams, and Chelsea Gray	4-1
Alana Beard, Nneka Ogumike, Candace Parker, Odyssey Sims, and Chelsea Gray	5-2

2017 REGULAR SEASON SUPERLATIVES

LOS ANGELES SPARKS HIGHS

Points, Game.....	99 vs Washington 5/19
Points, First Half.....	59 vs Washington 5/19
Points, Second Half.....	54 @ New York 5/30
Points, 1Q.....	38 vs Phoenix 6/18
Points, 2Q.....	27 @ Indiana 5/24
Points, 3Q.....	30, 2 times
Points, 4Q.....	29 @ Atlanta 5/27
Points, Overtime.....	-
Field Goals Made, 1H.....	22 @ Dallas 6/9
Field Goals Att, 1H.....	41, 2 times
Field Goal %, 1H.....	67.7%, 2 times
Field Goals Made, 2H.....	21 @ New York 5/30
Field Goals Att, 2H.....	40 vs Dallas 7/30
Field Goal %, 2H.....	65.6% @ New York 5/30
Field Goals Made,Game..	40 vs Dallas 7/30
Field Goals Att,Game.....	72, 2 times
Field Goal %,Game.....	57.4% vs Dallas 6/13
3FG Made, Game.....	10 vs Washington 5/19
3FG Att, Game	23, 2 times
3FG Percentage, Game....	53.3% @ Indiana 5/24
Free Throws Made.....	31 vs Chicago 6/6
Free Throws Att.....	40 vs Chicago 6/6
FT Percentage.....	100% @ Dallas 6/9
Offensive Rebounds....	13 vs Seattle 7/25
Defensive Rebounds...	33 vs Dallas 7/30
Total Rebounds.....	41 vs Dallas 7/30
Assists.....	28 vs Dallas 7/30
Steals.....	14 vs Seattle 5/13
Turnovers.....	21 @ Atlanta 5/27
Blocked Shots.....	7, 3 times
Personal Fouls.....	21, 2 times

OPPONENT HIGHS

Points, Game.....	96 @ Dallas 6/9
Points, First Half.....	48 vs Washington 5/19
Points, Second Half.....	55 @ Dallas 6/9
Points, 1Q.....	32 vs Connecticut 7/13
Points, 2Q.....	28 @ New York 8/13
Points, 3Q.....	27 @ Indiana 5/24
Points, 4Q.....	35 vs Dallas 6/13
Points, Overtime.....	-
Field Goals Made, 1H.....	17, 3 times
Field Goals Att, 1H.....	39, 2 times
Field Goal %, 1H.....	59.3% vs Seattle 5/13
Field Goals Made, 2H.....	20 @ Indiana 5/24
Field Goals Att, 2H.....	40 @ Dallas 8/6
Field Goal %, 2H.....	58.8% @ Indiana 5/24
Field Goals Made,Game..	36 @ Indiana 5/24
Field Goals Att,Game	79 @ Dallas 8/6
Field Goal %, Game	53.7% @ Indiana 5/24
3FG Made.....	11 @ Indiana 5/24
3FG Att.....	28 vs Dallas 7/30
3FG Percentage.....	68.8% @ Indiana 5/24
Free Throws Made.....	30 vs Dallas 7/30
Free Throws Att.....	33 vs Dallas 7/30
FT Percentage.....	94.7% vs Washington 5/19
Offensive Rebounds....	16, 2 times
Defensive Rebounds...	31 @ Dallas 8/6
Total Rebounds.....	47 @ Dallas 8/6
Assists.....	25 @ Atlanta 6/30
Steals.....	12 vs Connecticut 7/13
Turnovers.....	24 vs Seattle 5/13
Blocked Shots.....	7 vs Seattle 5/13
Personal Fouls.....	28 vs Chicago 6/6

Largest lead at any time.... 33 vs Phoenix 6/18
Largest deficit at any time... 19 at Minnesota 7/6

LOS ANGELES SPARKS LOWS

-Points, Game.....	69 vs Seattle 7/25
-Points, First Half.....	30 vs Washington 7/2
-Points, Second Half.....	28 vs Seattle 7/25
-Points, 1Q.....	14 @ Minnesota 7/6
-Points, 2Q.....	8 @ New York 8/13
-Points, 3Q.....	10 @ Indiana 5/24
-Points, 4Q.....	13, 2 times
-Points, Overtime.....	-
-Field Goals Made, 1H...	10 @ New York 5/30
-Field Goals Att, 1H.....	27 vs San Antonio 6/15
-Field Goal %, 1H.....	33.3% @ New York 5/30
-Field Goals Made, 2H....	9 vs Chicago 6/6
-Field Goals Att, 2H.....	26 @ Atlanta 6/30
-Field Goal %, 2H.....	28.1% vs Chicago 6/6
-Field Goals Made,Game..	22 vs Chicago 6/6
-Field Goals Att,Game.....	56 vs San Antonio 6/15
-Field Goal %,Game.....	34.4% vs Chicago 6/6
-3FG Made, Game.....	2, 3 times
-3FG Att, Game.....	11 @ Dallas 6/9
-3FG Percentage, Game..	13.3% @ Dallas 8/6
-Free Throws Made.....	4 vs Seattle 5/13
-Free Throws Att.....	8 vs Seattle 5/13
-FT Percentage.....	50.0% vs Seattle 5/13
-Offensive Rebounds....	3, 2 times
-Defensive Rebounds...	17 vs Seattle 5/13
-Total Rebounds.....	22, 2 times
-Assists.....	10 @ Seattle 7/8
-Steals.....	3 @ Atlanta 5/27
-Turnovers.....	6 vs New York 8/4
-Blocked Shots.....	0 vs Seattle 5/13
-Personal Fouls.....	10 vs Chicago 7/20

OPPONENT LOWS

-Points, Game.....	59 vs Phoenix 6/18
-Points, First Half.....	26 vs San Antonio 6/15
-Points, Second Half.....	22 vs Washington 7/2
-Points, 1Q.....	8 vs Dallas 6/13
-Points, 2Q.....	9 @ Atlanta 5/27
-Points, 3Q.....	8 @ Minnesota 8/11
-Points, 4Q.....	11, 2 times
-Points, Overtime.....	-
-Field Goals Made, 1H...	10, 2 times
-Field Goals Att, 1H.....	27, 2 times
-Field Goal %, 1H.....	29.4% vs Dallas 7/30
-Field Goals Made, 2H...	8 vs Phoenix 6/18
-Field Goals Att, 2H.....	23 vs SEA 5/13, @ SEA 7/8
-Field Goal %, 2H.....	24.2 vs Phoenix 6/18
-Field Goals Made,Game..	19 vs Dallas 7/30
-Field Goals Att,Game	53 vs Seattle 7/25
-Field Goal %, Game.....	28.8% vs Dallas 7/30
-3FG Made.....	2 @ Atlanta 5/27
-3FG Att.....	10, 2 times
-3FG Percentage.....	16.7% @ Atlanta 5/27
-Free Throws Made.....	6 @ New York 5/30
-Free Throws Att.....	8 vs Seattle 5/13
-FT Percentage.....	50.0%, 2 times
-Offensive Rebounds....	3 vs Seattle 5/13
-Defensive Rebounds...	14 vs Dallas 7/30
-Total Rebounds.....	21 vs Dallas 7/30
-Assists.....	10 vs Washington 7/2
-Steals.....	3, 2 times
-Turnovers.....	8 @ Indiana 5/24
-Blocked Shots.....	0, 2 times
-Personal Fouls.....	11 @ Minnesota 7/6

2017 INDIVIDUAL HIGH PERFORMANCES

Sparks Individual Highs:

Points..... 29 Nneka Ogumike vs Connecticut 7/13
 Field Goals Made... 11 Nneka Ogumike at Dallas 6/9
 Candace Parker at Dallas 6/9
 Field Goals Att..... 20 Nneka Ogumike vs Seattle 5/13
 Nneka Ogumike at Dallas 6/9
 Candace Parker at Dallas 6/9
 Nneka Ogumike vs Chicago 7/20
 FG% (Min. 8 FGM)..... 88.9% (8-9) Nneka Ogumike vs Phoenix 6/18
 3FG Made..... 6 Sydney Wiese vs Washington 5/19
 3FG Att..... 10 Sydney Wiese vs Washington 5/19
 Free Throws Made.... 10 Nneka Ogumike at Indiana 5/24
 Free Throws Att..... 11 Nneka Ogumike at Indiana 5/24
 Nneka Ogumike vs Chicago 6/6
 FT%(Min. 8 FTM)..... 100% (9-9) Nneka Ogumike vs Washington 5/19
 Offensive Rebounds 7 Candace Parker vs Washington 7/2
 Defensive Rebounds 17 Candace Parker at San Antonio 7/28
 Total Rebounds..... 17 Candace Parker at San Antonio 7/28
 Assists..... 11 Candace Parker at San Antonio 7/28
 Steals..... 5 Alana Beard vs Seattle 5/13
 Turnovers..... 7 Candace Parker vs Connecticut 7/13
 Blocked Shots..... 5 Candace Parker at Connecticut 6/27
 Personal Fouls..... 6 Essence Carson at Phoenix 6/10
 Minutes Played..... 37:56 Candace Parker at Dallas 6/9

Opponent Individual Highs:

Points..... 28 Diggins-Smith vs Dallas 6/13
 Field Goals Made... 11 Tina Charles at New York 5/30
 Glory Johnson at Dallas 6/9
 Field Goals Att..... 21 Tina Charles at New York 8/13
 FG% (Min. 8 FGM)... 66.7% (10-15) Isabelle Harrison vs San Antonio 6/15
 3FG Made..... 6 Diana Taurasi at Phoenix 6/10
 3FG Att..... 10 Diana Taurasi at Phoenix 6/10
 Diana Taurasi vs Phoenix 6/18
 Free Throws Made... 12 Skylar Diggins-Smith vs Dallas 6/13
 Free Throws Att..... 13 Skylar Diggins-Smith vs Dallas 6/13
 FT%(Min. 8 FTM)..... 100% (10-10) Elena Delle Donne vs Washington 5/19
 (8-8) Breanna Stewart at Seattle 7/8
 (8-8) Kayla McBride at San Antonio 7/28
 Offensive Rebounds 10 Jonquel Jones at Connecticut 6/27
 Defensive Rebounds 11 Glory Johnson at Dallas 8/6
 Total Rebounds..... 17 Jonquel Jones at Connecticut 6/27
 Assists..... 14 Courtney Vandersloot vs Chicago 7/20
 Steals..... 5 Jasmine Thomas vs Connecticut 7/13
 Turnovers..... 9 Jewell Loyd vs Seattle 5/13
 Blocked Shots..... 6 Breanna Stewart vs Seattle 7/25
 Personal Fouls..... 6 Tiffany Hayes at Atlanta 6/30
 Minutes Played 38:19 Brianna Holmes at Atlanta 5/27

2017 TOP INDIVIDUAL PERFORMANCES

POINTS

29 Nneka Ogumike vs Connecticut 7/13
 28 Nneka Ogumike at Dallas 6/9
 27 Nneka Ogumike at Minnesota 7/6
 25 Chelsea Gray at Atlanta 5/27
 25 Candace Parker at Dallas 6/9
 24 Nneka Ogumike at Indiana 5/24
 24 Chelsea Gray at Phoenix 6/10
 24 Chelsea Gray vs Dallas 6/13
 24 Nneka Ogumike vs Chicago 7/20
 24 Candace Parker vs New York 8/4
 23 Nneka Ogumike vs Seattle 5/13
 23 Nneka Ogumike vs Washington 5/19
 23 Candace Parker vs Dallas 7/30

FIELD GOALS

11 Candace Parker at Dallas 6/9
 11 Nneka Ogumike at Dallas 6/9
 10 Nneka Ogumike vs Seattle 5/13
 10 Nneka Ogumike at Minnesota 7/6
 10 Nneka Ogumike vs Connecticut 7/13
 10 Candace Parker vs Dallas 7/30
 10 Nneka Ogumike vs Dallas 7/30
 9 Odyssey Sims vs Seattle 5/13
 9 Chelsea Gray at Atlanta 5/27
 9 Nneka Ogumike at New York 5/30
 9 Nneka Ogumike at Connecticut 6/27
 9 Candace Parker at Atlanta 6/30

3-PT. FIELD GOALS

6 Sydney Wiese vs Washington 5/19
 4 Chelsea Gray vs Connecticut 7/13
 3 Chelsea Gray, 5 times
 3 Nneka Ogumike vs Seattle 5/13
 3 Candace Parker vs Dallas 6/13
 3 Essence Carson at Indiana 5/24
 3 Riquna Williams vs Phoenix 6/18
 3 Candace Parker vs New York 8/4
 3 Candace Parker at Minnesota 8/11

FREE THROWS

10 Nneka Ogumike at Indiana 5/24
 9 Nneka Ogumike vs Washington 5/19
 9 Nneka Ogumike vs Chicago 6/6
 8 Chelsea Gray vs San Antonio 6/15

TOTAL REBOUNDS

17 Candace Parker at San Antonio 7/28
 14 Nneka Ogumike at Minnesota 7/6
 13 Nneka Ogumike at Dallas 6/9
 13 Candace Parker at Indiana 6/24
 13 Candace Parker at Atlanta 6/30
 12 Candace Parker at Indiana 5/24
 12 Nneka Ogumike vs Indiana 7/17
 11 Candace Parker at New York 5/30
 11 Nneka Ogumike vs Chicago 6/6
 11 Candace Parker vs Washington 7/2
 11 Nneka Ogumike vs Connecticut 7/13

OFFENSIVE REBOUNDS

7 Candace Parker vs Washington 7/2
 6 Nneka Ogumike at Minnesota 7/6
 5 Nneka Ogumike at Dallas 6/9
 4 Nneka Ogumike at Atlanta 5/27
 4 Nneka Ogumike at New York 5/30

DEFENSIVE REBOUNDS

17 Candace Parker at San Antonio 7/28
 13 Candace Parker at Indiana 6/24
 11 Candace Parker at Indiana 5/24
 10 Nneka Ogumike vs Chicago 6/6
 10 Candace Parker at Atlanta 6/30
 10 Nneka Ogumike vs Connecticut 7/13
 10 Nneka Ogumike vs Indiana 7/17

BLOCKED SHOTS

5 Candace Parker at Connecticut 6/27
 4 Candace Parker vs Indiana 7/17
 4 Candace Parker at San Antonio 7/28
 3 Candace Parker at Atlanta 5/27
 3 Candace Parker vs Phoenix 6/18

ASSISTS

11 Candace Parker at San Antonio 7/28
 8 Chelsea Gray vs Seattle 5/13
 8 Chelsea Gray at Phoenix 6/10
 8 Chelsea Gray vs Dallas 7/30
 8 Odyssey Sims vs Dallas 7/30
 7 Candace Parker at Indiana 6/24
 6 Odyssey Sims vs Seattle 5/13
 6 Candace Parker at Indiana 5/24
 6 Candace Parker at Atlanta 5/27
 6 Chelsea Gray at New York 5/30
 6 Candace Parker vs Phoenix 6/18
 6 Chelsea Gray at Seattle 7/8
 6 Candace Parker vs Connecticut 7/13
 6 Nneka Ogumike vs Indiana 7/17
 6 Chelsea Gray vs Chicago 7/20
 6 Candace Parker vs New York 8/4

STEALS

5 Alana Beard vs Seattle 5/13
 4 Alana Beard vs Chicago 6/6
 4 Nneka Ogumike at New York 5/30
 4 Nneka Ogumike vs Chicago 6/6
 4 Nneka Ogumike at Phoenix 6/10
 4 Candace Parker vs Chicago 7/20
 4 Candace Parker at Dallas 8/6

TURNOVERS

7 Candace Parker vs Connecticut 7/13
 6 Chelsea Gray at Atlanta 5/27
 6 Nneka Ogumike at Atlanta 6/30
 5 Candace Parker at Atlanta 5/27
 5 Candace Parker at Indiana 6/24
 5 Candace Parker at Atlanta 6/30
 5 Candace Parker at Dallas 8/6
 5 Odyssey Sims at Dallas 8/6

MINUTES PLAYED

37:56 Candace Parker at Dallas 6/9
 37:53 Nneka Ogumike vs Seattle 5/13
 37:28 Chelsea Gray at Minnesota 8/11
 37:12 Alana Beard vs San Antonio 6/15
 36:52 Chelsea Gray at Connecticut 6/27
 36:41 Nneka Ogumike at Minnesota 8/11
 36:38 Alana Beard at Minnesota 7/6

2017 OFFENSIVE TALLIES

PLAYER	G-GS	10-19 PTS	20-29 PTS	30+ PTS	10+ REB	5+ AST	DBL-DBL	TPL-DBL
Alana Beard	27-27	10				2		
Essence Carson	17-14	3						
Maimouna Diarra	7-0							
Chelsea Gray	27-27	17	5			10		
Sandrine Gruda	2-0							
Tiffany Jackson-Jones	20-1							
Jantel Lavender	25-0	5						
Nneka Ogwumike	27-27	11	15		7	1	7	
Candace Parker	26-26	16	8		8	12	8	1
Odyssey Sims	24-7	4	3			7		
Sydney Wiese	23-0		1					
Riquna Williams	21-6	8						

2017 OFFENSIVE LEADERS (INCLUDES TIES)

PLAYER	MINUTES	POINTS	REBOUNDS	ASSISTS	STEALS	BLOCKS
Alana Beard	7			1	9	5
Essence Carson					2	2
Maimouna Diarra						
Chelsea Gray	12	6	1	11	2	3
Sandrine Gruda						
Tiffany Jackson-Jones			1			2
Jantel Lavender						2
Nneka Ogwumike	4	14	12	1	10	5
Candace Parker	5	7	15	12	8	23
Odyssey Sims		2		4	2	1
Sydney Wiese						2
Riquna Williams					4	1

2016 REGULAR SEASON SUPERLATIVES

LOS ANGELES SPARKS HIGHS

Points, Game.....	102 at New York 9/7
Points, First Half.....	49 (2 times)
Points, Second Half.....	56 (2 times)
Points, 1Q.....	30 vs. Connecticut 6/24
Points, 2Q.....	26 (3 times)
Points, 3Q.....	32 vs. Atlanta 9/4
Points, 4Q.....	28 vs. Chicago 7/17
Points, Overtime.....	11 vs. Washington 5/26
Field Goals Made.....	40 at New York 9/7
Field Goals Att.....	75 at Chicago 9/2
Field Goal Percentage.....	61.4 vs. Connecticut 6/24
3FG Made.....	12 vs. Phoenix 6/3
3FG Att.....	28 vs. Chicago 7/17
3FG Percentage.....	50% (2 times)
Free Throws Made.....	25 at Indiana 6/12
Free Throws Att.....	29 vs. Connecticut 5/28
FT Percentage.....	100% (3 times)
Offensive Rebounds....	14 vs. Phoenix 6/3
Defensive Rebounds...	36 vs. San Antonio 7/20
Total Rebounds.....	41 at New York 9/7
Assists.....	28 vs. Chicago 7/17
Steals.....	10 (3 times)
Turnovers.....	24 at Los Angeles 5/15
Blocked Shots.....	9 vs. San Antonio 7/20
Personal Fouls.....	23 (4 times)

OPPONENT HIGHS

Points, Game.....	96 (2 times)
Points, First Half.....	56 vs. Chicago 7/17
Points, Second Half.....	52 (2 times)
Points, 1Q.....	36 vs. Chicago 7/17
Points, 2Q.....	31 at Indiana 6/1
Points, 3Q.....	32 at Minnesota 8/28
Points, 4Q.....	34 at Indiana 6/12
Points, Overtime.....	13 vs. Washington 5/26
Field Goals Made.....	41 vs. Minnesota 6/19
Field Goals Att.....	85 vs. Connecticut 6/24
Field Goal Percentage.....	58.1% vs. Indiana 7/10
3FG Made.....	11 (2 times)
3FG Att.....	26 vs. Connecticut 6/24
3FG Percentage.....	69.2% vs. Chicago 7/17
Free Throws Made.....	27 at Indiana 6/12
Free Throws Att.....	30 at Indiana 6/12
FT Percentage.....	100% at Phoenix 9/15
Offensive Rebounds....	16 (2 times)
Defensive Rebounds...	34 at San Antonio 6/14
Total Rebounds.....	45 at San Antonio 6/14
Assists.....	30 vs. Minnesota 6/19
Steals.....	13 at Dallas 6/16
Turnovers.....	17 (2 times)
Blocked Shots.....	10 at Atlanta 7/6
Personal Fouls.....	26 (2 times)

LOS ANGELES SPARKS LOWS

Points, Game.....	62 at Phoenix 9/15
Points, First Half.....	26 at Los Angeles 5/15
Points, Second Half.....	30 vs. Minnesota 5/22
Points, 1Q.....	11 at New York 7/6
Points, 2Q.....	7 vs. San Antonio 7/20
Points, 3Q.....	10 vs. Minnesota 5/22
Points, 4Q.....	10 at Atlanta 7/6
Points, Overtime.....	---
Field Goals Made.....	21 at Phoenix 9/15
Field Goals Att.....	49 at Los Angeles 5/15
Field Goal Percentage.....	35.0 at Phoenix 9/15
3FG Made.....	1 at Los Angeles 5/15
3FG Att.....	10 at Los Angeles 5/15
3FG Percentage.....	10% at Los Angeles 5/15
Free Throws Made.....	8 (2 times)
Free Throws Att.....	9 at Connecticut 6/10
FT Percentage.....	61.5 % at New York 7/6
Offensive Rebounds....	1 (2 times)
Defensive Rebounds...	15 at Dallas 6/16
Total Rebounds.....	22 at Indiana 6/1
Assists.....	10 at Phoenix 9/15
Steals.....	3 at Washington 9/9
Turnovers.....	8 (2 times)
Blocked Shots.....	0 (2times)
Personal Fouls.....	12 vs. Washington 7/15

OPPONENT LOWS

Points, Game.....	51 vs. Washington 7/15
Points, First Half.....	23 vs. Washington 7/15
Points, Second Half.....	28 vs. Washington 7/15
Points, 1Q.....	12 at Indiana 6/12
Points, 2Q.....	8 vs. Washington 7/15
Points, 3Q.....	8 vs. Minnesota 5/22
Points, 4Q.....	9 vs. Washington 7/15
Points, Overtime.....	---
Field Goals Made.....	20 vs. Washington 7/15
Field Goals Att.....	60 at San Antonio 7/8
Field Goal Percentage.....	29% vs. Washington 7/15
3FG Made.....	1 at Atlanta 7/6
3FG Att.....	7 at Minnesota 8/28
3FG Percentage.....	10% at Atlanta 7/6
Free Throws Made.....	5 vs. Washington 7/15
Free Throws Att.....	7 vs. Washington 7/15
FT Percentage.....	52.6% vs. Atlanta 6/28
Offensive Rebounds....	2 vs. Los Angeles 9/11
Defensive Rebounds...	16 (2 times)
Total Rebounds.....	22 vs. Connecticut 5/28
Assists.....	10 vs. Los Angeles 9/11
Steals.....	4 (3 times)
Turnovers.....	5 at Washington 9/9
Blocked Shots.....	0 (2 times)
Personal Fouls.....	15 at Washington 9/9

SPARK PLUGS / COMMUNITY CORNER

Sparks on the WNBA's All-Time Leader Boards

Career Points Leaders

21. Tina Charles	4619
22. Penny Taylor	4606
23. Alana Beard	4538
24. Candace Parker	4419
25. Jia Perkins	4370
26. Sophia Young-Malcolm	4300

Career Rebounds Leaders

15. Tangel Smith	2335
16. Candace Parker	2229
17. Erika de Souza	2220
18. Crystal Langhorne	2200

Career Steals Leaders

2. Ticha Penicheiro	764
3. Sheryl Swoopes	657
4. Alana Beard	637
5. Katie Douglas	623

Career Assists Leaders

20. Dominique Canty	1051
21. Sheryl Swoopes	1037
22. Nikki Teasley	982
23. Candace Parker	978
24. Alana Beard	975
25. Kara Lawson	950

Career Blocks Leaders

7. Ruth Riley	505
8. Brittney Griner	470
9. Candace Parker	460
10. Taj McWilliams-Franklin	443

Career Field Goals Made Leaders

21. Angel McCoughtry	1728
22. Alana Beard	1720
23. Asjha Jones	1688
24. Candace Parker	1672

#WeAreGirls Empowerment Workshop Series 2017

The fourth of seven girl empowerment engagements taking place this summer, our LeadHERship Academy: Let's W.E.R.K.I., will take place on August 12th from 1p-4p at the LA Sparks Front Office complex. 25-40 girls will come together to take part in leadership and self confidence-building exercises and activities, in addition to a segment on creative writing and expression through song writing and poetry. Guest speakers: #WeAreWomen Sparks Ambassadors Coach Kiana Shaw of the LeadHERship Academy, DeNike Turner-Stephens of Runway4Peace, and Mali Nicole, an LA Sparks MAGIC Moment musician.

The fifth of seven girl empowerment engagements taking place this summer, our Lead with Light: #WeAreWomen and #WeAreGirls Mentorship Day, will take place from August 21st to August 31st. Our nine official #WeAreGirls Youth Ambassadors will each spend time alongside one of our official #WeAreWomen Female Ambassadors for a day filled with professional development and mentorship. The LA Sparks #WeAreWomen Female Ambassadors come from walks of life and work all across the city at the business and nonprofit executive level.

The sixth of seven girl empowerment engagements taking place this summer, our My Body, My Mind: Three Cheers to Health, Fitness, & Wellness, will take place on August 26th from 1p-4p at the LA Sparks Front Office complex. 25-40 girls will come together to find their inner zen through yoga, meditation, and breast health awareness education. Guest speakers: LA County Dept of Public Health, Insight LA, and LA Care.

The final girl empowerment engagement of the 2017 season, Spark the School Year: Back-to-School Summit, will take place in October as the playoffs are in full swing. 100 girls will come together for an all-day event filled with college and career counsel, constructive study techniques, stress management exercises, positive social media, dating advice, personal brand management, and professional development. This year's Spark the School Year summit will take place in partnership with WomenSPEAK.

Sparks Visit Smithsonian National Museum of African American History and Culture

On Tuesday, August 15, from 3:30 pm to 5:30pm EST, the Los Angeles Sparks will visit the Smithsonian National Museum of African American History and Culture. This will be the team's first visit since the museum opened.

The National Museum of African American History and Culture is the only national museum devoted to the documentation of African American life, history, and culture. It was established by Act of Congress in 2003, following decades of efforts to promote and highlight the contributions of African Americans. To date, the Museum has collected more than 36,000 artifacts and nearly 100,000 individuals have become charter members. The Museum opened to the public on September 24, 2016, as the 19th and newest museum of the Smithsonian Institution.

For more information about the museum, please visit: nmaahc.si.edu.

#WeAreWomen Woman of the Year Award & #WeAreGirls Essay Scholarship Ceremonies 2017

This is the third year of the #WeAreWomen female empowerment campaign and culminates this season with the Woman of the Year Award recognizing Los Angeles-based women who work everyday to inspire those around them to work harder, reach higher, and give more. Eight nominees will be honored at halftime during the MN Lynx vs. LA Sparks game on Sunday, August 27, 2017.

This is the second year of the #WeAreGirls essay scholarship campaign. The LA Sparks are set to award one \$3,000 scholarship to a girl currently enrolled in the 5th-8th grade, and one \$3,000 scholarship to a girl currently enrolled in the 9th-12th grade. Topic this year was "How do you define your legacy?". The two scholarship winners will be honored at halftime during the MN Lynx vs. LA Sparks game on Sunday, August 27, 2017.

Driven 2 Hoop Financial Literacy Program 2017

On August 27th, the LA Sparks, in partnership with marquee sponsor EquiTrust, will host the final of five financial literacy educational experiences. This last installment of Driven2Hoop will take place before the #WeAreWomen home game at Staples Center against the MN Lynx. The LA Sparks will welcome 100 4th and 5th graders from Watts-based elementary schools for the one hour lesson followed by the Lynx vs. Sparks basketball game. In addition to the financial literacy education - all youth participants receive VIP Staples Center treatment, Sparks t-shirts, and free Levy Restaurant food vouchers.

2017 LOS ANGELES SPARKS SOCIAL MEDIA ROSTER

NO	PLAYER	TWITTER HANDLE	WEBSITE
0	Alana Beard	@Alanabeard20	
17	Essence Carson	@Pr3pe	https://soundcloud.com/PR3PE
26	Maimouna Diarra		
12	Chelsea Gray	@cgray209	
7	Sandrine Gruda	@Sandrine_Gruda	http://www.sandrinegruda.fr/news/
33	Tiffany Jackson-Jones	@tiffjack3	
42	Jantel Lavender	@jlav42	
30	Nneka Ogwumike	@Nnemkadi30	https://www.instagram.com/nnemkadi/
3	Candace Parker	@Candace_Parker	http://candaceparker.com/
1	Odyssey Sims	@Lucky_Lefty0	
24	Sydney Wiese	@swiesebaby24	https://www.instagram.com/swiesebaby24/
2	Riquna Williams	@riquna_w	
	Brian Agler	@brian_agler	
	Tonya Edwards		
	Bobby Kelsey	@BobbieKelsey	
	Los Angeles Sparks Official	@LA_Sparks	http://sparks.wnba.com/

2017 LOS ANGELES SPARKS ON SOCIAL MEDIA

Candace Parker @Candace_Parker
 Congrats to the big bro! Lakeland Magic GM!
 Proud of who you are. #SiblingThrivity
 #Love #Glacier #BasketballBlooded #BballIQ



Nnemkadi Ogwumike @Nnemkadi30
 What 3000 feels like. #Thankful



Los Angeles Sparks @LA_Sparks
 Congratulations to @Nnemkadi30 for scoring her 3,000th @WNBA career point this evening in the win against @minnesotalynx #WeRise #GoSparks



7:19 PM - 11 Aug 2017 from Los Angeles, CA

144 Retweets 397 Likes



Swish Appeal @SwishAppeal
 .@lucky_lefty0 has started to flourish for the @LA_Sparks — tonight she erupted for 20 to beat #NewYork #wnba



Los Angeles too much for NY
 The Liberty entered halftime tied with the Sparks, but as the game went on LA took off.

swishappeal.com

10:58 PM - 4 Aug 2017

24 Retweets 56 Likes

BRIAN AGLER BIOGRAPHY

WNBA Head Coaching Record: 243-205
Los Angeles Sparks Head Coaching Record: 59-36
Seasons in the WNBA: 14th Season
Seasons with the Sparks: 3rd Season

HEAD COACH BRIAN AGLER

On Jan. 5, 2015, Agler became the 12th head coach in Los Angeles Sparks history, bringing with him over 30 years of head-coaching experience, including 11 in the WNBA. In his first season with LA, Agler led the Sparks to a league-best 15th postseason appearance. Just one year later he led them to a 26-8 regular season mark and the 2016 WNBA championship, the third league title in the franchise's history.

Along the way, three Sparks players earned major WNBA awards in 2016 -- Nneka Ogwumike (league MVP); Candace (Finals MVP); and Jantel Lavender (Sixth Woman of the Year). The 2016 championship, when coupled with the one captured by his Seattle Storm in 2010, made Agler the first head coach in WNBA history to guide two different franchises to a title.

The all-time winningest coach in women's professional basketball history in the U.S. with 296 regular-season victories, Agler enters the 2017 campaign with 224 wins as a WNBA head coach and 72 from his tenure in the ABL. On June 6, 2017, when the Sparks faced the Chicago Sky at the Staples Center, Head Coach Brian Agler notched his **300th regular season career win as a head coach**.

Immediately prior to joining the Sparks, Agler spent seven seasons (2008-14) at the helm of the Storm, guiding Seattle to the playoffs in each of his first six campaigns and compiling an overall regular-season record of 136-102 (.571) during his tenure there. In 2010, when Agler was recognized as the WNBA Coach of the Year, his Storm – led by league MVP Lauren Jackson and All-Star Sue Bird – captured the franchise's second WNBA title with an impressive regular 28-6 season record and a 7-0 run through the postseason.

Agler first joined the WNBA as Head Coach and GM of the expansion Minnesota Lynx from 1999-2002, where he compiled a 42-54 (.438) record. Following that, Agler was an assistant with the Phoenix Mercury in 2004 before spending 2005-07 as an assistant with the San Antonio Stars.

Agler's move to the WNBA's Lynx in 1999 followed three seasons as head coach of the ABL's Columbus Quest from 1996-1999, when his teams compiled a 72-18 regular-season record and a 10-4 mark in the postseason. Agler led the Quest to back-to-back ABL championships in 1997 and 1998 and was the ABL Coach of the Year for the 1996-97 campaign.

Agler spent 15 seasons coaching in the collegiate ranks, including 13 seasons as a head coach. He posted an impressive collegiate record of 248-135 (.648 winning percentage). From 1993-96 he served as the head women's basketball coach at Kansas State. In 1998, Agler took over as the head women's coach at the University of Missouri-Kansas City. In five seasons at UMKC, Agler was 85-54 and took the Kangaroos from a 9-16 record in 1988-89 to four straight winning seasons. Under his direction, UMKC led the NCAA in scoring defense three straight seasons (1990-93). In 1991, UMKC set an NCAA record, allowing just 51.8 points per game.

As the head women's basketball coach at Northeast Oklahoma A&M Junior College from 1984-88, Agler compiled a 124-42 record. In 1985-86, NEO A&M ranked second nationally at 30-2.

Agler attended Wittenberg University (Springfield, Oh.), where he starred on the basketball team, leading the Tigers to their only NCAA Division III basketball championship in basketball as a freshman. He started all 112 games during his career, leaving the school as the all-time assist leader (481). Agler was the MVP of the Ohio Athletic Conference and first-team All-America as a senior. In 1995, he was inducted into the Wittenberg Hall of Honor.

BRIAN AGLER BIOGRAPHY

BRIAN AGLER BY THE NUMBERS

WNBA CAREER HEAD COACHING STATS

Season	Team	Record	Pct.	Playoffs.
2017	Los Angeles Sparks	19-8	.704	
2016	Los Angeles Sparks	26-8	.765	6-3
2015	Los Angeles Sparks	14-20	.412	1-2
2014	Seattle Storm	12-22	.353	
2013	Seattle Storm	17-17	.500	0-2
2012	Seattle Storm	16-18	.471	1-2
2011	Seattle Storm	21-13	.618	1-2
2010	Seattle Storm	28-6	.824	7-0
2009	Seattle Storm	20-14	.588	1-2
2008	Seattle Storm	22-12	.647	1-2
2002	Minnesota Lynx	6-13	.316	
2001	Minnesota Lynx	12-20	.375	
2000	Minnesota Lynx	15-17	.469	
1999	Minnesota Lynx	15-17	.469	
WNBA TOTALS		243-205	.543	18-15 .545

ABL CAREER HEAD COACHING STATS

Season	Team	Record	Pct.	Playoffs.	Pct.
1998-99	Columbus Quest	5-1	.833		
1997-98	Columbus Quest	36-8	.818	5-2	
1996-97	Columbus Quest	31-9	.775	5-2	
ABL TOTALS		72-18	.800	10-4	.714

CAREER HEAD COACHING STATS

League	Record	Pct.	Playoffs.	Pct.
WNBA	243-205	.537	18-15	.545
ABL	72-18	.800	10-4	.714
CAREER TOTALS	315-223	.585	28-19	.596

#0	ALANA BEARD	GUARD/FORWARD	5-11	5/14/84	DUKE	EXP: 11
----	-------------	---------------	------	---------	------	---------

2017 Regular Season Averages:

G-GS	PPG	RPG	APG	SPG	BPG	MPG	FG%	3FG%	FT%
27-27	7.6	3.1	2.4	2.0	0.4	31.9	52.8	27.8	79.5

	2017 Season Highs	Career Highs
PTS	18 vs CHI 6/6	33, @ PHO 6/4/08
REB	6 @ CON 6/17	10, 2 Times
AST	5, 3 times	10, @ SAN 6/28/12
STL	5 vs SEA 5/13	7, 3 Times
BLK	2, 2 times	4, 2 Times
FGM	7 vs CHI 6/6	13, vs SEA 7/23/06
3FGM	1, 5 times	6, @ ATL 6/3/08
FTM	7 vs NYL 5/30	11 (2 times)
MINs	37, 2 times	48, vs IND 6/18/05

2017 NOTABLES

2017 NOTABLES

- League leader in steals, averaging 2.0 spg and has at least one steal in 25 of 27 games this season and is fifth in field goal % with 54.5%.**
- Played 31 minutes, shooting 0-4 from the field, had 3 rebounds, 2 assists, 1 steal, 2 blocks, and did not score at New York on 8/13.
- Played 34 minutes, shooting 1-3 from the field, had 5 rebounds, the game high with 3 steals, and scored 2 points at Minnesota on 8/11.
- Played 28 minutes, shot 2-3 from the field, 1-3 from the free-throw line, had 2 assists, 2 steals, and scored 5 points at Dallas on 8/6.
- Played 27 minutes, shot 1-1 from the field, had 4 rebounds, 2 assists, 3 steals, and scored 2 points against New York on 8/4.
- Played a season low 24 minutes, shooting 5-8 from the field, perfect 3-3 from the free-throw line, had 3 rebounds, 1 assist, 1 steal, and scored 13 points against Dallas on 7/30.
- Played 32 minutes, shot 5-6 from the field, had 1 rebound, 1 assist, 1 steal, 1 block, and scored 10 points at San Antonio on 7/28.
- Played 28 minutes, shot 2-6 from the field, had 4 rebounds, 2 assists, 3 steals, 2 blocks, and scored 4 points versus Seattle on 7/25.

GAME BY GAME STATS

[illegible]

#17	ESSENCE CARSON	FORWARD/GUARD	6-0	7/28/86	RUTGERS	EXP: 9
-----	----------------	---------------	-----	---------	---------	--------

2017 Regular Season Averages:

G-GS	PPG	RPG	APG	SPG	BPG	MPG	FG%	3FG%	FT%
17-14	5.2	1.6	1.0	0.6	0.4	19.1	39.7	27.3	85.0

	2017 Season Highs	Career Highs
PTS	15 @ IND 5/24	28 VS. DET 9/10/09
REB	5 @ IND 5/24	11, vs. CHI 7/6/12
AST	3 @ ATL 5/27	7, @ CHI 6/30/15
STL	2 vs DAL 6/13, vs SAS 6/15	5, vs. CON 8/18/11
BLK	1, 4 Times	3, 3 Times
FGM	5 @ IND 5/24	11, 2 Times
3FGM	3 @ IND 5/24	4, vs. SAC 7/23/09
FTM	3 @ DAL 6/9, @ ATL 6/30	6, 2 Times
MINs	33 @ IND 5/24	46 (Indiana - 6/26/2008)

2017 NOTABLES

-Did not play against Seattle 7/25, at San Antonio 7/28, against Dallas 7/30, against New York 8/4, at Dallas 8/6, at Minnesota 8/11, and at New York 8/13 due to an elbow strain.

-Played 14 minutes, shooting a perfect 2-2 from the field, had 1 assist, and scored 4 points versus Indiana on 7/17.

-Played 13 minutes, shooting 1-5 from the field, had 1 rebound, 2 assists, 1 steal, 2 blocks, and scored 2 points versus Connecticut on 7/13.

-Played 21 minutes, shooting 2-7 from the field, had 2 rebounds, 1 assist, 1 steal, and scored 4 points at Seattle on 7/8.

-Played 23 minutes, shooting 3-6 from the field, had 2 rebounds, 2 assists, and scored 6 points at Minnesota on 7/6.

-Played 9 minutes, shooting 0-4 from the field, had 1 rebound and did not score versus Washington on 7/2.

-Returned from her groin pull in Atlanta on 6/30 playing 21 points off the bench, shooting 4-5 from the field, 1-2 from 3-point range, 3-4 from the free-throw line, collected 3 boards, 1 steal, 1 block, and scored 12 points to lead both benches.

GAME BY GAME STATS

[illegible]

2017 Regular Season Averages:

2017 NOTABLES

- Did not play at Dallas on 8/6, at Minnesota on 8/11, and at New York on 8/13 due to coach's decision.
- Played 2 minutes and did not score against New York on 8/4.
- Played 3 minutes, made her first career free-throw shooting 1-2 from the line, had 2 rebounds, her first career steal, and scored 1 point against Dallas on 7/30
- Did not play versus Chicago on 7/20, Seattle on 7/25, and at San Antonio on 7/28 due to coach's decision.
- Played 43 seconds, had 1 rebound, and did not score versus Indiana on 7/17.
- Played 27 seconds and did not score versus Connecticut on 7/13.
- Played 38 seconds and did not score at Seattle on 7/8.
- Did not play in Minnesota on 7/6 due to coach's decision.
- Did not play versus Washington on 7/2 due to coach's

[illegible]

2017 Regular Season Averages:

	2017 Season Highs	Career Highs
PTS	25, @ ATL 5/27	25, vs ATL 5/27/17
REB	8 @ DAL 8/6	9, @ CHI 8/30/15
AST	8, 3 times	8, 4 times
STL	3 vs DAL 7/30	3, 4 times
BLK	1, 7 times	2, @ SAN 9/4/15
FGM	9 @ ATL 5/27	9 vs ATL 5/27
3FGM	4 vs CON 7/13	4, 2 times
FTM	8 vs SAS 6/15	8 vs SAS 6/15/17
MINs	37, 2 times	37, 3 times

- Has scored in double figures in 22 of 27 games this season.
- Second in the league in three-point % , 45.3% and tied for third in the league averaging 32.9 minutes.
- Name 2017 All-Star Reserve.
- Played a team high 35 minutes, shooting 5-10 from the field, 3-6 from 3-point range, perfect 2-2 from the free throw line, had 1 rebound, 2 assists, 1 block, and scored 15 points at New York on 8/13.
- Played a career and season high tying 37 minutes, shot 8-17 from the field, 2-5 from 3-point range, perfect 5-5 from the free-throw line, had 3 rebounds, 3 assists, 2 steals, and scored the game high 23 points at Minnesota on 8/11.
- Played 36 minutes, shooting 3-11 from the field, perfect 6-6 from the free-throw line, had a season high 8 rebounds, game high 4 assists, 1 steal, and scored 12 points at Dallas on 8/6.
- Played 29 minutes, shooting 5-9 from the field, 1-2 from 3-point range, had the game high 7 rebounds, 3 assists, had 1 steal, and scored 11 points against New York on 8/4.

[illegible]

G-GS	PPG	RPG	APG	SPG	BPG	MPG	FG%	3FG%	FT%
2-0	1.0	0	0	0	0	1.5	50.0	0	0

2017 NOTABLES

- Played 2 minutes, shooting 1-2 from the field, and scored her first 2 points of the season at New York on 8/13.
- Did not play at Dallas on 8/6 and at Minnesota on 8/11 due to coach's decision.
- Made her first appearance in game action since signing with the team on July 28 and did not score against New York on 8/4.
- Did not play against Dallas on 7/30 due to coach's decision.
- Signed with Los Angeles on July 28.

[illegible]

2017 Regular Season Averages:

G-GS	PPG	RPG	APG	SPG	BPG	MPG	FG%	3FG%	FT%
20-1	1.1	1.1	0.2	0.1	0.2	5.8	42.9	00.0	66.7

	2017 Season Highs	Career Highs
PTS	8 vs SEA 5/13	27 (San Antonio - 8/6/2011)
REB	8 vs SEA 5/13	17 (Atlanta - 7/26/2011)
AST	2 vs WSH 5/19	6 (Washington - 6/18/2011)
STL	1 vs PHO 6/18	4 (Chicago - 7/13/2011)
BLK	1 , 3 times	4 (Los Angeles - 6/29/2007)
FGM	4 vs SEA 5/13	10 (San Antonio - 8/6/2011)
3FGM	-	1 (Seattle - 6/27/2010)
FTM	4 vs CHI 6/6	12
MINs	32 vs SEA 5/13	43 (San Antonio - 9/11/2011)

2017 NOTABLES

-Played 1 minute and did not score at New York on 8/13.

-Did not play at Minnesota on 8/11 due to coach's decision.

-Played 5 minutes, shot 1-2 from the field, had 1 rebound, and scored 2 points at Dallas on 8/6.

-Played 5 minutes, had 1 rebound, and did not score against New York on 8/4.

-Played 12 minutes, had 4 rebonds, 1 assist, and did not score against Dallas on 7/30.

-Played 5 minutes, shot 1-1 from the field, and scored 2 points at San Antonio on 7/28.

-Played 4 minutes, had 1 rebound, and did not score against Seattle on 7/25.

-Did not play versus Chicago on 7/20 due to coach's decision.

-Played 2 minutes and did not score versus Indiana on 7/17.

-Played 27 seconds and did not score versus Connecticut on 7/13.

-Played 38 seconds and did not score at Seattle on 7/8.

GAME BY GAME STATS

Date	Opponent	MIN	FG-A	PCT	3PM-A	PCT	FTM-A	PCT	OFF	DEF	TOT	AST	STL	BLK	TO	PF	PTS
5/13	SEA	32	4-9	44.4	0-0	0.0	0-0	0.0	4	4	8	0	0	0	2	2	8
5/19	WAS	15	0-1	0.0	0-0	0.0	0-0	0.0	0	3	3	2	0	1	2	1	0
5/24	@IND	2	0-0	0.0	0-0	0.0	0-0	0.0	0	0	0	0	0	0	0	1	0
5/27	@ATL	DNP															
5/30	@NYL	DNP															
6/6	CHI	1	0-0	0.0	0-0	0.0	4-6	66.7	0	1	1	0	0	0	0	0	4
6/9	@DAL	0	0-0	0.0	0-0	0.0	0-0	0.0	0	0	0	0	0	0	0	0	0
6/10	@PHO	DNP															
6/13	DAL	DNP															
6/15	SAS	2	1-1	100	0-0	0.0	0-0	0.0	0	0	0	0	0	0	0	0	2
6/18	PHO	13	1-4	25.0	0-1	0.0	0-0	0.0	0	1	1	0	1	1	0	0	2
6/24	@IND	7	0-0	0.0	0-0	0.0	0-0	0.0	0	1	1	0	0	0	0	2	0
6/27	@CON	3	1-2	50.0	0-0	0.0	0-0	0.0	0	0	0	0	0	0	1	3	2
6/30	@ATL	3	0-0	0.0	0-0	0.0	0-0	0.0	0	1	1	0	0	0	0	1	0
7/2	WAS	DNP															
7/6	@MIN	2	0-0	0.0	0-0	0.0	0-0	0.0	0	0	0	0	0	0	0	0	0
7/8	@SEA	1	0-0	0.0	0-0	0.0	0-0	0.0	0	0	0	0	0	0	1	0	0
7/13	CON	0	0-0	0.0	0-0	0.0	0-0	0.0	0	0	0	0	0	0	0	0	0
7/17	IND	2	0-0	0.0	0-0	0.0	0-0	0.0	0	0	0	0	0	0	0	0	0
7/20	CHI	DNP															
7/25	SEA	4	0-0	0.0	0-0	0.0	0-0	0.0	0	1	1	0	0	0	1	1	0
7/28	@SAS	5	1-1	100	0-0	0.0	0-0	0.0	0	0	0	0	0	0	0	0	2
7/30	DAL	12	0-1	0.0	0-0	0.0	0-0	0.0	1	3	4	1	0	0	0	1	0
8/4	NYL	5	0-0	0.0	0-0	0.0	0-0	0.0	0	1	1	0	0	0	0	1	0
8/6	@DAL	5	1-2	50.0	0-0	0.0	0-0	0.0	0	0	0	0	0	1	0	0	2
8/11	@MIN	DNP															
8/13	@NYL	1	0-0	0.0	0-0	0.0	0-0	0.0	0	0	0	0	0	0	0	1	0
8/16	@WAS																
8/18	@CHI																
8/22	SAS																
8/24	@PHO																
8/27	MIN																
9/1	ATL																
9/3	CON																

2017 Regular Season Averages:

G-GS	PPG	RPG	APG	SPG	BPG	MPG	FG%	3FG%	FT%
25-0	6.7	3.1	1.0	0.3	0.2	17.2	46.0	33.3	80.0

	2017 Season Highs	Career Highs
PTS	18 @ SAS 7/28	25, Twice
REB	7 vs CHI 7/20	13, 4 Times
AST	3, 5 times	5, vs CHI 6/6/14
STL	1, 7 Times	3, vs CHI 6/6/14
BLK	2 @ IND 6/24	5, @ SAN 8/23/15
FGM	8 @ SAS 7/28	11, Twice
3FGM	2 @ SAS 7/28	2 @ SAS 7/28
FTM	3 @ PHO 6/10, @ SEA 7/8	8, vs SAN 8/30/15
MINs	28 vs SEA 7/25	43, @ CON 6/26/15

2017 NOTABLES

-Played 17 minutes, shooting 3-8 from the field, had 5 rebounds, and led the Sparks bench scoring 6 points at New York on 8/13.

-Played 15 minutes, shot 1-5 from the field, perfect 2-2 from the free-throw line, had 2 rebounds, and scored 4 points at Minnesota on 8/11.

-Played 14 minutes, shot 1-5 from the field, had 1 rebound, and scored 2 points at Dallas on 8/6.

-Played 17 minutes, shot 2-4 from the field, had 4 rebounds, and scored 4 points against New York on 8/4.

-Played 21 minutes, shot 4-8 from the field, had 4 rebounds, tied a season high 3 assists, had 1 block, and tied for bench high scoring with 8 points against Dallas on 7/30.

-Played 25 minutes, shot a season high 8-13 from the field, career high 2-3 from 3-point range, had 3 rebounds, 1 steal, and led both benches scoring a season high 18 points at San Antonio on 7/28.

-Played a season high 28 minutes, shot 7-13 from the field, had 6 rebounds, 3 assists, 1 steal, and scored a season high 14 points against Seattle on 7/25.

GAME BY GAME STATS

[illegible]

2017 Regular Season Averages:

	2017 Season Highs	Career Highs
PTS	29 vs CON 7/13	38 vs. ATL 6/30/16
REB	14 @ MIN 7/6	20, @ IND 7/12/12
AST	6 vs IND 7/17	8, Twice
STL	4, 3 times	6 vs. CHI 6/1/14
BLK	2 @ DAL 6/9, @ SEA 7/8	5 vs. ATL 6/30/16
FGM	11 @ DAL 6/9	13 vs. ATL 6/30/16
3FGM	3 vs SEA 5/13	3 vs SEA 5/13/17
FTM	10 @ IND 5/24	14 vs. WAS, 9/3/15
MINs	38 vs SEA 5/13	42 Twice

-Tied for third in the lin steals averaging 1.7 spg, and fourth in field goal % with 55.7%.

-Has scored in double figures in 26 of 27 this season and has scored 20+ points in 15 of those contests.

-Named 2017 All-Star Reserve.

-Played 32 minutes, shooting 5-13 from the field, perfect 2-2 from the free throw line, had 6 rebounds, 3 assists, and scored 12 points at New York on 8/13.

-Nneka's double figure point streak of 43 games in the regular season (started on June 30, 2016 vs. Atlanta when she scored a career high 38 points) ended in Minnesota on 8/11.

-Played 37 minutes, shot 1-8 from the field, 1-1 from the free-throw line, had 8 rebounds, 4 assists, 1 steal, and scored a season low 3 points at Minnesota on 8/11.

-Played 36 minutes, shot 7-15 from the field, 1-3 from 3-point range, perfect 6-6 from the free-throw line, had 7 rebounds, 1 assist, 2 steals, 1 block, and tied Parker for team high scoring 21 points at Dallas on 8/6.

[illegible]

2017 Regular Season Averages:

G-GS	PPG	RPG	APG	SPG	BPG	MPG	FG%	3FG%	FT%
26-26	16.6	8.4	4.3	1.5	1.9	30.7	47.5	35.7	76.0

	2017 Season Highs	Career Highs
PTS	25 @ DAL 6/9	40, vs HOU 7/9/08
REB	17 @ SAS 7/28	20, @ SAN 6/1/13
AST	11 @ SAS 7/28	11 @ SAS 7/28
STL	4, 2 times	8, vs IND 8/18/15
BLK	5 @ CON 6/27	9, vs TUL 6/20/12
FGM	11 @ DAL 6/9	15 vs HOU 7/9/2008
3FGM	3 vs DAL 6/13	5, vs TUL 9/6/15
FTM	7, 2 times	14 vs CHI 10/5/16
MINs	38 @ DAL 6/9	48, Twice

2017 NOTABLES

-Fourth in the league in blocks, averaging 1.9 bpg.

- Has scored in double figures in 24 of 26 games this season.

-Named WNBA Player of the Week for 6/18, 7/2, 7/30 and named 2017 All-Star Starter for Western Conference.

-Awarded 2017 ESPY for Best WNBA Player.

-Recorded the league's sixth triple-double at San Antonio on 7/28.

-Played 30 minutes, shooting 4-12 from the field, 2-7 from 3-point range, perfect 4-4 from the free throw line, had the game high 7 rebounds, 2 assists, game high 3 steals, 2 blocks, and scored 14 points at New York on 8/13.

-Played 32 minutes, shooting 5-12 from the field, 3-6 from 3-point range, 6-7 from the free-throw line, had the team high with 10 rebounds, 3 assists, 1 steal, 2 blocks, and scored 19 points for her 8th double-double this season at Minnesota on 8/11.

Played 33 minutes, shooting 7-15 from the field, 1-5 from 3-point range, perfect 6-6 from the free-throw line, had a team high 9 rebounds, 2 assists, game high 4 steals, 1 block, and tied the team high scoring 21 points at Dallas on 8/6.

GAME BY GAME STATS

[illegible]

2017 Regular Season Averages:

2017 NOTABLES

- Started for the seventh straight game, playing 34 minutes, shooting 7-12 from the field, 4-5 from the free throw line, had 2 rebounds, game high 5 assists, 1 steals, 1 block, and led the Sparks scoring 18 points at New York on 8/13.
- Played a season high 36 minutes, shot 6-17 from the field, 1-6 from 3-point range, 1-1 from the free-throw line, had 2 rebounds, team high 5 assists, 1 block, and scored 14 points at Minnesota on 8/11.
- Played 33 minutes, shot 4-11 from the field, perfect 6-6 from free-throw line, had 3 rebounds, had 1 steal, and scored 14 points at Dallas on 8/6.
- Started for the fourth straight game, playing a season high 35 minutes, shooting 7-16 from the field, 1-3 from 3-point range, tied a season high 5-5 from the free-throw line, had 2 rebounds, 2 assists, and was the second highest scorer with 20 points against New York on 8/4.
- Started for the third straight game, playing 29 minutes, shooting 2-6 from the field, had 3 rebounds, set a new season high tying the game Chelsea Gray for game high assists with 8, had 2 steals, and scored 4 points against Dallas on 7/30.

Date	Opponent	MIN	FG-A	PCT	3PM-A	PCT	FTM-A	PCT	OFF	DEF	TOT	AST	STL	BLK	TO	PF	PTS
5/13	SEA	31	9-15	60.0	1-4	25.0	1-2	50.0	0	4	4	6	2	0	2	3	20
5/19	WAS	20	1-3	33.33	0-1	0.00	3-4	75.0	0	2	2	3	3	0	2	0	5
5/24	@IND	NWT	Left	Ankle	Injury												
5/27	@ATL	NWT	Left	Ankle	Injury												
5/30	@NYL	NWT	Left	Ankle	Injury												
6/6	CHI	22	1-3	33.3	0-0	0.00	5-6	83.3	1	1	2	1	1	0	1	3	7
6/9	@DAL	28	6-10	60.0	0-1	0.00	0-0	0.0	0	2	2	5	1	1	3	2	12
6/10	@PHO	14	1-2	50.0	0-1	0.00	0-1	0.0	1	1	2	1	0	1	1	2	2
6/13	DAL	22	2-6	33.3	0-1	0.00	1-3	33.3	1	3	4	3	3	1	1	3	5
6/15	SAS	14	2-3	66.7	1-2	50.0	0-0	0.0	0	0	0	1	1	0	1	0	5
6/18	PHO	25	1-7	14.3	0-2	0.00	2-2	100	1	3	4	5	2	0	3	0	4
6/24	@IND	23	3-9	33.3	1-3	33.3	2-2	100	0	0	0	4	2	0	1	3	9
6/27	@CON	9	0-2	0.0	0-0	0.00	0-0	0.0	0	0	0	2	1	0	1	1	0
6/30	@ATL	12	0-2	0.0	0-1	0.00	0-0	0.0	0	0	0	3	2	0	0	1	0
7/2	WAS	13	1-4	25.0	0-2	0.00	2-2	100	0	1	1	3	1	0	0	3	4
7/6	@MIN	9	3-5	60.0	0-0	0.00	1-1	100	0	0	0	2	1	0	0	1	7
7/8	@SEA	8	0-2	0.0	0-1	0.00	2-2	100	0	0	0	0	1	0	1	1	2
7/13	CON	12	0-1	0.0	0-0	0.00	0-0	0.0	0	1	1	0	0	0	0	0	0
7/17	IND	16	4-7	57.1	0-0	0.00	1-1	100	0	1	1	0	1	0	1	2	9
7/20	CHI	15	2-3	66.7	0-1	0.00	1-1	100	0	1	1	1	0	0	1	1	5
7/25	SEA	24	0-9	0.0	0-2	0.00	1-2	50.0	2	1	3	2	0	0	1	2	1
7/28	@SAS	30	9-12	75.0	1-2	50.0	3-3	100	1	0	1	4	2	0	0	2	22
7/30	DAL	29	2-6	33.3	0-1	0.0	0-0	0.0	1	2	3	8	2	0	1	4	4
8/4	NYL	35	7-16	43.8	1-3	33.3	5-5	100	0	2	2	2	0	0	0	3	20
8/6	@DAL	33	4-11	36.4	0-2	0.0	6-6	100	1	2	3	0	1	0	5	2	14
8/11	@MIN	36	6-17	35.3	1-6	16.7	1-1	100	1	1	2	5	0	1	2	2	14
8/13	@NYL	34	7-12	58.3	0-3	0.0	4-5	80.0	0	2	2	5	1	1	4	2	18
8/16	@WAS																
8/18	@CHI																
8/22	SAS																
8/24	@PHO																
8/27	MIN																
9/1	ATL																
9/3	CON																

#24	SYDNEY WIESE	GUARD	6-0	6/16/95	OREGON STATE	EXP: R
-----	--------------	-------	-----	---------	--------------	--------

2017 Regular Season Averages:

G-GS	PPG	RPG	APG	SPG	BPG	MPG	FG%	3FG%	FT%
23-0	2.4	0.7	0.3	0.1	0.1	7.5	39.6	41.9	66.7

	2017 Season Highs	Career Highs
PTS	22 vs WAS 5/19	22 vs WAS 5/19
REB	3, 2 times	3, 2 times
AST	2 @ NYL 8/13	2 @ NYL 8/13
STL	1, 3 times	1, 3 times
BLK	1, 3 times	1, 3 times
FGM	8 vs WAS 5/19	8 vs WAS 5/19
3FGM	6 vs WAS 5/19	6 vs WAS 5/19
FTM	3 vs NYL 8/4	3 vs NYL 8/4
MINs	27 vs WAS 5/19	27 vs WAS 5/19

2017 NOTABLES

- Came off the bench and played 19 minutes, shooting 1-2 from the field, had 2 rebounds, set a new season/career high with 2 assists, 1 block, and scored 2 points at New York on 8/13.
- Played 8 minutes, shooting 2-2 from the field, 1-1 from 3-point range, and scored 5 points to lead the Sparks bench in scoring at Minnesota on 8/11.
- Played 11 minutes, tied a career/season high 3 rebounds, had 1 assist, 1 steal, 1 block, and did not score at Dallas on 8/6.
- Played 6 minutes, and shot a career high 3-4 from the free-throw line, had 2 rebounds, and scored 3 points against New York on 8/4.
- Played 8 minutes, and did not score against Dallas on 7/30.
- Played 3 minutes, and did not score at San Antonio on 7/28.
- Did not play against Seattle on 7/25 due to coach's decision.
- Played 2 minutes and did not score versus Chicago on 7/20.
- Played 7 minutes, shooting 1-4 from the field, 1-2 from 3-point range, had 1 rebound, and scored 3 points versus Indiana on 7/17.
- Played 5 minutes, had 1 rebound, 1 assist, and did not score versus Connecticut on 7/13.

GAME BY GAME STATS

[illegible]

2017 Regular Season Averages:

	2017 Season Highs	Career Highs
PTS	15 vs PHO 6/18	51 (San Antonio - 9/8/2013)
REB	4 @ ATL 5/27	9 (Seattle - 9/12/2013)
AST	4 @ CON 6/27	6 (3 Times)
STL	3 vs PHO 6/18	5 (3 Times)
BLK	2 vs ATL 5/27	2 (5 Times)
FGM	5 vs PHO 6/18	17 (San Antonio - 9/8/2013)
3FGM	3 vs PHO 6/18	8 (San Antonio - 9/8/2013)
FTM	6 @ CON 6/27	18 (Atlanta - 7/7/2015)
MINs	29 @ CON 6/27	39 (Phoenix - 8/4/2015)

- Did not play at Minnesota on 8/11 and at New York on 8/13 due to left knee strain.
- Played 4 minutes, shot 1-1 from the field, had 1 steal, scored 2 points, and suffered a left knee strain in the first quarter at Dallas on 8/6.
- Came off the bench and played 21 minutes, shooting 3-13 from the field, had 3 rebounds, 1 assist, 1 steal, and led the bench scoring with 6 points against New York on 8/4.
- Played 21 minutes, shot 2-9 from the field, had 1 rebound and 1 steal, and co-led the both benches in scoring with 8 points against Dallas on 7/30.
- Played 17 minutes, shot 2-5 from the field, had 1 assist, 1 steal, and scored 4 points at San Antonio on 7/28.
- Played 17 minutes, shot 3-4 from the field, 1-1 from 3-point range, 4-5 from the free-throw, had 1 rebound, and scored 11 points against Seattle on 7/25.

GAME BY GAME STATS

Date	Opponent	MIN	FG-A	PCT	3PM-A	PCT	FTM-A	PCT	OFF	DEF	TOT	AST	STL	BLK	TO	PF	PTS	
5/13	SEA	12	0-3	0.0	0-1	0.0	0-0	0.0	0	1	1	1	0	0	1	1	1	
5/19	WAS	DNP																
5/24	@IND	11	0-1	0.00	0-1	0.00	0-0	0.00	0	1	1	1	0	0	0	0	0	
5/27	@ATL	15	0-6	0.00	0-1	0.00	5-6	83.3	0	4	4	2	1	2	0	2	5	
5/30	@NYL	22	4-11	36.4	2-5	40.0	2-2	100	0	2	2	2	1	0	3	2	12	
6/6	CHI	15	1-4	25.0	1-2	50.0	1-2	50.0	1	0	1	1	1	0	1	0	4	
6/9	@ DAL	3	0-1	0.0	0-0	0.00	0-0	0.00	0	0	0	0	1	0	1	1	0	
6/10	@ PHO	DNP																
6/13	DAL	10	0-3	0.0	0-2	0.0	5-6	83.3	0	0	0	0	1	0	0	2	5	
6/15	SAS	13	0-3	0.0	0-2	0.0	0-0	0.0	0	1	1	0	0	0	0	2	0	
6/18	PHO	20	5-7	71.4	3-5	60.0	2-2	100	0	1	1	0	3	0	3	3	15	
6/24	@IND	28	2-5	40.0	2-5	40.0	0-0	0.0	0	1	1	0	0	0	3	1	6	
6/27	@ CON	29	3-12	25.0	1-5	20.0	6-6	100	2	1	3	4	2	1	0	3	13	
6/30	@ATL	18	3-7	42.9	2-6	33.3	2-2	100	0	1	1	0	0	0	0	1	10	
7/2	WAS	22	2-5	40.0	2-5	40.0	0-0	0.0	0	1	1	1	0	0	1	1	6	
7/6	@MIN	13	2-5	40.0	1-4	25.0	0-0	0.0	0	0	0	0	0	0	0	2	5	
7/8	@SEA	22	4-11	36.4	0-4	0.0	2-2	100	1	1	2	0	1	0	2	2	10	
7/13	CON	26	3-10	30.0	1-5	20.0	3-5	60.0	2	3	5	1	1	0	2	2	10	
7/17	IND	22	3-6	50.0	2-2	100	2-2	100	0	1	1	1	3	0	2	4	10	
7/20	CHI	26	2-8	25.0	2-5	40.0	0-0	0.0	0	2	2	0	0	0	1	2	6	
7/25	SEA	17	3-4	75.0	1-1	100	4-5	80.0	0	1	1	0	0	0	1	3	11	
7/28	@SAS	17	2-5	40.0	0-3	0.0	0-0	0.0	0	0	0	1	1	0	1	3	4	
7/30	DAL	21	2-9	22.2	0-5	0.0	4-4	100	0	1	1	0	1	0	4	4	8	
8/4	NYL	21	3-13	23.1	0-5	0.0	0-0	0.0	0	3	3	1	1	0	0	0	6	
8/6	@DAL	4	1-1	100	0-0	0.0	0-0	0.0	0	0	0	0	1	0	0	1	2	
8/11	@MIN	NWT	Left	Knee	Strain													
8/13	@NYL	NWT	Left	Knee	Strain													
8/16	@WAS																	
8/18	@CHI																	
8/22	SAS																	
8/24	@PHO																	
8/27	MIN																	
9/1	ATL																	
9/3	CON																	