



NEW YORK LIBERTY

GAME NOTES

MEDIA CONTACT: Alesia Howard | ahoward@nyliberty.com | (914) 908-5835 | @nyliberty | #LibertyLoud

2019 SCHEDULE/RESULTS

MAY

PRESEASON

| | | |
|----------------------------------|-----------------|-----------|
| TUE, MAY 9 | VS. CHINA | W: 89-71 |
| (AT BARCLAYS CENTER) | | |
| MON, MAY 13 | VS. CONNECTICUT | L: 100-66 |
| (AT MOHEGAN SUN ARENA) | | |
| TUE, MAY 14 | VS. ATLANTA | L: 92-87 |
| (AT MOHEGAN SUN ARENA) | | |
| SUN, MAY 19 | VS. CONNECTICUT | L: 98-79 |
| (TIMES UNION CENTER, ALBANY, NY) | | |

REGULAR SEASON

| | | |
|----------------|---------|----------|
| FRIDAY, MAY 24 | INDIANA | L: 81-80 |
|----------------|---------|----------|

JUNE

| | | |
|--------------|----------------|-----------|
| SAT JUNE 1 | AT INDIANA | L: 92-77 |
| TUE, JUNE 4 | LOS ANGELES | L: 78-73 |
| FRI, JUNE 7 | WASHINGTON | L: 94-85 |
| SUN, JUNE 9 | LAS VEGAS | W: 88-78 |
| WED, JUNE 12 | MINNESOTA | W: 75-69 |
| FRI JUNE 14 | AT LAS VEGAS | L: 100-65 |
| SAT, JUNE 15 | AT LOS ANGELES | W: 98-92 |
| WED, JUNE 19 | CHICAGO | L: 91-83 |
| SAT, JUNE 22 | AT MINNESOTA | L: 92-83 |
| FRI, JUNE 28 | DALLAS | W: 69-68 |
| SUN, JUNE 30 | AT ATLANTA | W: 74-58 |

JULY

| | | |
|--------------|----------------|----------|
| WED, JULY 3 | AT SEATTLE | W: 84-83 |
| FRI, JULY 5 | AT PHOENIX | W: 80-76 |
| SUN, JULY 7 | LAS VEGAS | L: 90-58 |
| FRI, JULY 12 | AT CHICAGO | L: 99-83 |
| SUN, JULY 14 | AT SEATTLE | L: 78-69 |
| SAT, JULY 20 | LOS ANGELES | W: 83-78 |
| WED, JULY 24 | AT CONNECTICUT | L: 70-63 |

AUGUST

| | | |
|--------------|--------------------|-----------|
| THU, AUG. 1 | AT DALLAS | L: 87-64 |
| SUN, AUG. 4 | CONNECTICUT | L: 94-79 |
| WED, AUG. 7 | AT CHICAGO | L: 101-92 |
| SUN, AUG. 11 | SEATTLE (BARCLAYS) | L: 84-69 |
| TUE, AUG. 13 | MINNESOTA | L: 89-73 |
| FRI, AUG. 16 | AT DALLAS | L: 83-77 |
| SUN, AUG. 18 | AT PHOENIX | 6:00 PM |
| TUE, AUG. 20 | AT INDIANA | 7:00 PM |
| FRI, AUG. 23 | ATLANTA | 7:30 PM |
| SUN, AUG. 25 | AT WASHINGTON | 3:00 PM |
| TUE, AUG. 27 | PHOENIX | 7:00 PM |
| FRI, AUG. 30 | CONNECTICUT | 7:30 PM |

SEPTEMBER

| | | |
|--------------|------------|---------|
| TUE, SEPT. 3 | WASHINGTON | 7:00 PM |
| FRI, SEPT. 6 | INDIANA | 7:30 PM |
| SUN, SEPT. 8 | AT ATLANTA | 4:00 PM |

GAME 26: NEW YORK LIBERTY VS. PHOENIX MERCURY AWAY GAME #14



NEW YORK LIBERTY (8-17)

VS.

PHOENIX MERCURY (12-13)

Sunday, August 18 • 6:00 PM ET
Phoenix, Arizona
TV: League Pass



LIBERTY VS. MERCURY

2019 RESULTS VS. DALLAS (1-0)

7/5/19at Phoenix..... W, 80-76

INJURY REPORT: Amanda Zahui B-Out, Concussion
Asia Durr-Out, Groin Strain

| | PPG | OPP. PPG | FG% | OPP FG% | 3PT% | OPP 3PT% | FT% | RPG | APG | STL | TO | BLK |
|-----|------|----------|------|---------|------|----------|------|------|------|-----|------|-----|
| NY | 77.0 | 84.2 | 41.3 | 43.6 | 32.4 | 34.7 | 78.4 | 34.5 | 18.8 | 7.2 | 16.0 | 3.9 |
| PHO | 75.7 | 75.2 | 42.0 | 42.0 | 33.5 | 33.9 | 75.9 | 32.4 | 17.5 | 6.1 | 12.9 | 4.2 |

PROBABLE STARTERS

| NO | NAME | PPG | RPG | APG | NOTES |
|----|--|------|-----|-----|---|
| 5 | Kia Nurse, G UCONN, 2nd Season | 14.2 | 2.5 | 2.1 | LAST GAME: Scored 10 points in the first quarter. Finished with 17 points, four rebounds and three assists. |
| 30 | Tanisha Wright, G PENN STATE, 14th Season | 4.2 | 2.9 | 4.2 | LAST GAME: Passed Temeka Johnson (1382) for the 10th spot on the WNBA all-time assists list, finishing with seven assists and a game-high nine rebounds. |
| 31 | Tina Charles, C UCONN, 10th Season | 17.3 | 7.5 | 2.1 | LAST GAME: Game-high 25 points, seven rebounds on 40% from the field and 66.7% from deep. Became 11th all-time leading scorer (5855) and 5th all-time in rebounds (3,071). |
| 14 | Bria Hartley, G UCONN, 6th Season | 9.3 | 3.3 | 3.5 | LAST GAME: Scored 12 points and added two assists. |
| 12 | Reshanda Gray, F CALIFORNIA, 3rd Season | 5.6 | 6.0 | 0.6 | LAST GAME: Added four points and four rebounds. |

MERCURY PROBABLE STARTERS

12 Briann January, F
6 Yvonne Turner, F
21 Brianna Turner, C

5, Leilani Mitchell, G
24, DeWanna Bonner, G

NEW YORK LIBERTY

GAME NOTES

QUICK HITS

The New York Liberty will continue a three-game road trip, taking on the Phoenix Mercury on Sunday, August 18.

In their last meeting, New York came out victorious in a 80-76 decision in Phoenix.

Kia Nurse led the Liberty offense with a 26-point night and Tina Charles complimented Nurse's performance with a dominant double-double of 23 points and 12 rebounds. Rookie Asia Durr also added 10 points and Reshanda Gray grabbed 10 boards.

For the Mercury, Brittney Griner led the offense with an impressive 30-point and eight-rebound showing. Leilani Mitchell gave Phoenix 14 points in their home loss to the Liberty.

The Liberty are coming off a back-and-forth battle that the team loss in Dallas on Friday, August 16.

New York fell to the Wings by a score of 83-77. Tina Charles had another stellar performance of 25 points and seven rebounds. WNBA All-Star Kia Nurse added 17 points, Bria Hartley added 12 points from the backcourt, and Tanisha Wright had a team-high nine rebounds and seven assists.

With the loss in Dallas, the Liberty's record has fallen to 8-17. Phoenix is coming off a 77-68 home win over the Atlanta Dream on August 16.

In that matchup, the Mercury were led to victory by DeWanna Bonner's double-double of 27 points and 14 rebounds. Briann January had 16 points, and Leilani Mitchell finished with a line of 15 points, five rebounds and assists.

With their win on August 16, the Phoenix Mercury improved their record to 12-13.

MILESTONE WATCH

Tina Charles - Charles is approaching 100 WNBA three pointers made, as she is currently at 85.

Brittany Boyd - Approaching 250 WNBA two-point field goals made. She currently has 240.

Rebecca Allen - Currently has played 99 WNBA games and is approaching 100.

Kia Nurse - Nurse is approaching 100 three pointers in the W. She is currently at 81.

WNBA CAREER LEADERS

Points

| | |
|-------------------------------|-------------|
| 9. Lauren Jackson | 6007 |
| 10. Seimone Augustus..... | 5857 |
| 11. Tina Charles..... | 5855 |
| 12. Becky Hammon..... | 5830 |
| 13. DeLisha Milton-Jones..... | 5571 |

Assists

| | |
|--------------------------------|-------------|
| 9. Shannon Johnson..... | 1424 |
| 10. Tanisha Wright..... | 1389 |
| 11. Temeka Johnson..... | 1382 |
| 12. Teresa Weatherspoon..... | 1339 |
| 13. Dawn Staley..... | 1337 |

Rebounds

| | |
|----------------------------------|-------------|
| 4. Sylvia Fowles..... | 3274 |
| 5. Tina Charles..... | 3071 |
| 6. Tina Thompson | 3070 |
| 7. Taj McWilliams-Franklin | 3013 |
| 8. Candice Dupree..... | 2910 |
| 9. Candace Parker..... | 2620 |

STORY LINES

WNBA LEADERS IN THIS MATCHUP

NEW YORK

Tina Charles- #5 in PPG (17.3), #11 in RPG (7.5)

Kia Nurse- #14 in PPG (14.2)

Brittany Boyd- #9 in APG (4.8)

Rebecca Allen #2 in 3PT% (48.9%)

PHOENIX

Brittney Griner- #1 in PPG (19.4), #12 in RPG (7.0)

DeWanna Bonner- #4 in PPG (18.3), #9 in RPG (7.6)

Leilani Mitchell- #5 in 3PT% (44.9%) #18 in PPG (18.3)

NEW HEIGHTS FOR THE VETS

In New York's last game in Dallas, Tina Charles entered the game only 11 points behind Becky Hammon's 11th spot on the WNBA's all-time scoring list. She passed Hammon (5,841) with 25 points on the night giving her a total of 5,855 total career points.

Charles also entered the game only six rebounds behind Tina Thompson's (3,070) fifth spot on the league's all-time list. She also hit this milestone tonight with seven boards, giving her a total of 3,071.

Tanisha Wright (1389) passed Temeka Johnson (1382) to get the 10th spot on the WNBA all-time assists list, finishing with seven assists and a game-high nine boards.

THIRD QUARTER BLUES

Before the game against Dallas on Friday, New York had not won a third quarter in scoring since June 15 against the Los Angeles Sparks. The Liberty outscored the Wings 19-18 in the third, but ultimately lost the game.

CAREER NIGHTS FOR REBECCA ALLEN

Liberty sharpshooter and Australia-native Rebecca Allen had the best performance of her WNBA career (at that time) on August 7 against the Chicago Sky. Allen, who is returning from a metacarpal fracture, totaled 21 points on the night, which included six three-pointers, four assists and four blocks.

On August 13 against the Minnesota Lynx, Rebecca Allen would go on to have another career-night, dominating the Lynx defense with a 20-point second quarter off the bench. Her 20-point rally is tied for the second-most points in a quarter in WNBA history, the record is currently held by Diana Taurasi who put together a 22-point quarter on July 14, 2006. Rebecca Allen went on to score 28 total points on the night, including six-consecutive field goals made.

STORY LINES

BABY ON BOARD!

New York guard and Long Island-native, Bria Hartley is balancing life in the WNBA and motherhood, as she is the mother of a two-year old son named Bryson. He has is currently traveling with the team on the three-game road trip to Dallas, Phoenix and Indianapolis and bringing a ton of smiles along the way for the team and staff.

CONSISTENT STARTERS

During the 2019 season, the only players to start every game for the Liberty have been the two leading scorers, veteran forward Tina Charles and second-year guard Kia Nurse. This can be attributed to injuries, overseas commitments, etc.

TURNOVERS CONTINUE TO PLAGUE NEW YORK

The Liberty's Achilles heel this season has been turnovers, averaging 16 per game. The only team averaging more turnovers than the Liberty is the Minnesota Lynx with 16.6 per game.

RESHANDA'S RESILIENCE

Reshanda Gray's journey to the Liberty roster has been a long one. Before joining this year's team, she hadn't played in the WNBA for three regular seasons. In 2015, she was drafted 16th by Minnesota out of California. After her time in Minnesota, Gray was traded to the Atlanta Dream until the 2017 season. She was then traded again and waived after training camp by the Connecticut Sun.

This season, Gray has been instrumental to the team, starting many of the games and averaging nearly six points and six rebounds.

LIBERTY WITHOUT TWO STARTERS

The New York Liberty have been going into battle without two starters forward/center Amanda Zauhi B (concussion) and rookie guard Asia Durr (groin). The team is 0-2 without Zauhi B and Durr. Zauhi B is questionable for the game in Dallas. Asia Durr is out.

INTERNATIONAL FLAIR

Similar to its city, the Liberty is made up of a very diverse group of people. With six different countries and four different continents represented on the team, it's the most diverse team in the WNBA.

Rebecca Allen- Australia
Nayo Raincock-Ekunwe- Canada
Marine Johannes- France
Kia Nurse- Canada
Han Xu- China
Amanda Zauhi B- Sweden

BALL OUT, NEW YORKERS

In the highly-anticipated regular season Barclays Center debut on August 11, the Liberty were led by three of their native New Yorkers. The offense relied on Tina Charles, who had a team-high 22 points and eight rebounds on the day. Fellow New York-native, Bria Hartley, complimented Charles' performance with a 17-point performance of her own. In addition, Tanisha Wright had a game-high seven assists.

NO TERRIBLE TWOS FOR NURSE

In her second WNBA season, Kia Nurse has nearly doubled her average scoring from 9.1 to 14.2. She earned a starting position on the team and as an All-Star. Nurse become the team's second leading scorer. She has scored a season-high 26 points three times this season.

JUMP(WO)MAN

Jordan Brand signed Liberty guards Kia Nurse and Asia Durr on June 1. The two joined Maya Moore as only two of three women signed to Jordan.

WNBA SEASON LEADERS (August 17, 2019)

POINTS PER GAME

| | | |
|----|--------------------|------|
| 1. | Washington Mystics | 87.8 |
| 2. | Chicago Sky | 82.3 |
| 3. | Las Vegas Aces | 81.3 |
| 4. | Los Angeles Sparks | 78.8 |
| 5. | Connecticut Sun | 78.6 |

FIELD GOAL PERCENTAGE

| | | |
|----|--------------------|------|
| 1. | Washington Mystics | 46.9 |
| 2. | Chicago Sky | 44.6 |
| 3. | Minnesota Lynx | 44.3 |
| 4. | Las Vegas Aces | 42.7 |
| 5. | Indiana Fever | 42.1 |

REBOUNDS PER GAME

| | | |
|----|-----------------|------|
| 1. | Las Vegas Aces | 38.8 |
| 2. | Connecticut Sun | 36.7 |
| 3. | Atlanta Dream | 36.3 |
| 4. | Chicago Sky | 36.0 |
| 5. | Dallas Wings | 35.3 |

THREE POINTERS MADE

| | | |
|----|--------------------|-----|
| 1. | Washington Mystics | 228 |
| 2. | Connecticut Sun | 194 |
| 3. | Chicago Sky | 190 |
| 4. | Los Angeles Sparks | 185 |
| 4. | Seattle Storm | 185 |

ASSISTS PER GAME

| | | |
|----|--------------------|------|
| 1. | Chicago Sky | 21.4 |
| 2. | Washington Mystics | 21.3 |
| 3. | Las Vegas Aces | 21.0 |
| 4. | Minnesota Lynx | 19.9 |
| 5. | Connecticut Sun | 18.8 |

THREE POINT PERCENTAGE

| | | |
|----|--------------------|------|
| 1. | Las Vegas Aces | 38.3 |
| 2. | Washington Mystics | 36.0 |
| 3. | Los Angeles Sparks | 35.0 |
| 4. | Chicago Sky | 34.8 |
| 5. | Connecticut Sun | 34.6 |

BLOCKS PER GAME

| | | |
|----|--------------------|-----|
| 1. | Atlanta Dream | 5.3 |
| 2. | Chicago Sky | 4.6 |
| 2. | Washington Mystics | 4.6 |
| 4. | Connecticut Sun | 4.3 |
| 4. | Las Vegas Aces | 4.3 |

FREE THROW PERCENTAGE

| | | |
|----|--------------------|------|
| 1. | Washington Mystics | 86.5 |
| 2. | Phoenix Mercury | 86.0 |
| 3. | Los Angeles Sparks | 85.1 |
| 4. | Chicago Sky | 82.5 |
| 5. | Dallas Wings | 81.3 |

STEALS PER GAME

| | | |
|----|--------------------|-----|
| 1. | Seattle Storm | 9.6 |
| 2. | Connecticut Sun | 9.1 |
| 3. | Minnesota Lynx | 8.5 |
| 4. | Los Angeles Sparks | 8.3 |
| 5. | Washington Mystics | 8.2 |

PHOENIX MERCURY

2019 RECORD

| | |
|-------------|-------|
| Record..... | 12-13 |
| Home..... | 8-4 |
| Road..... | 4-9 |

2018 RECAP

| | |
|---------------|-------------------------------------|
| Record..... | 20-14 |
| Home..... | 9-8 |
| Road..... | 11-6 |
| Finish..... | 2nd in the West |
| Playoffs..... | Lost in third round against Seattle |

RECENT MATCHUPS

7/5/19.....at Phoenix..... W, 80-76

2019 SCHEDULE

7/5/19.....at Phoenix.....10:00 p.m.
 8/18/19.....at Phoenix.....6:00 p.m.
 8/27/19.....at New York.....7:00 p.m.

LIBERTY HISTORY VS. MERCURY

| | |
|----------------------|-------|
| All-Time Record..... | 28-22 |
| Home | 17-8 |
| Away | 11-14 |
| Overtime..... | 1-2 |
| Postseason..... | 1-1 |

LIBERTY

| | |
|-------------------------|--|
| Most Points | 107 at New York (8/14/10) |
| Fewest Points | 48 at Phoenix (5/31/00) |
| Largest Victory | 38 (107-69) at New York (8/14/10) |
| Individual Points | 31 - Tina Charles at Phoenix (7/1/16) |
| | 31 - Cappie Pondexter at Phoenix (8/23/12) |

MERCURY

| | |
|-------------------------|---|
| Most Points | 104 at New York (OT) (6/26/16) |
| Fewest Points | 51 at Phoenix (5/31/00) |
| Largest Victory | 19 (69-50) at Phoenix (7/7/97) |
| Individual Points | 36 - Diana Taurasi at Phoenix (OT) (7/9/06) |

ROSTER

| NUM | PLAYER | POS | HT | WEIGHT | DOB | EXP | FROM |
|-----|-------------------|-----|------|--------|--------------------|-----|--------------------|
| 24 | DeWanna Bonner | F | 6-4 | 143 | AUGUST 21, 1987 | 9 | AUBURN/USA |
| 17 | Essence Carson | G | 6-0 | 163 | JULY 28, 1986 | 11 | RUTGERS/USA |
| 9 | Sophie Cunningham | G | 6-1 | 170 | AUGUST 16, 1996 | R | MISSOURI |
| 42 | Brittney Griner | C | 6-9 | 205 | OCTOBER 18, 1990 | 6 | BAYLOR/USA |
| 12 | Briann January | G | 5-8 | 144 | JANUARY 11, 1987 | 10 | ARIZONA STATE/USA |
| 20 | Camille Little | F | 6-2 | 180 | JANUARY 18, 1985 | 12 | NORTH CAROLINA/USA |
| 31 | Sancho Lyttle | F | 6-5 | 175 | SEPTEMBER 20, 1983 | 14 | HOUSTON/USA |
| 5 | Leilani Mitchell | G | 5-5 | 138 | JUNE 15, 1985 | 10 | UTAH/USA |
| 11 | Alanna Smith | F | 6-4 | 180 | NOVEMBER 10, 1996 | R | STANFORD |
| 3 | Diana Taurasi | G | 6-0 | 163 | JUNE 11, 1982 | 14 | CONNECTICUT/USA |
| 21 | Brianna Turner | F | 6-3 | 170 | JULY 5, 1996 | R | NOTRE DAME |
| 6 | Yvonne Turner | G | 5-10 | 131 | OCTOBER 13, 1987 | 2 | NEBRASKA/USA |

Head Coach: Sandy Brondello (From - Australia)

Assistant Coaches: Julie Hairgrove (College - Arizona)

Assistant Coach: Penny Taylor (Australia)

Player Development Coach: Jennifer Gillom (College - Ole Miss)

Strength-and-Conditioning Coach: Jonathan Mak (College - Illinois State)

Athletic Trainer: Alicia Yamamoto (College - Indiana University)

WOMEN'S NATIONAL BASKETBALL ASSOCIATION

OFFICIAL SCORER'S REPORT FINAL BOX

Friday, July 5, 2019 Talking Stick Resort Arena, Phoenix, AZ
Officials: #25 Tiffany Bird, #53 Jeff Smith, #24 Tony Dawkins

Game Duration: 1:52
Attendance: 9560

VISITOR: New York Liberty (7-7)

| | POS | MIN | FG | FGA | 3P | 3PA | FT | FTA | OR | DR | TOT | A | PF | ST | TO | BS | +/- | PTS | |
|------------------------|-----------------------------|-------|--------|-------|----|-------|----|-------|----|----|--------|----|----|----|----|----|-----|-----|---------------------|
| 15 Brittany Boyd | F | 18:51 | 1 | 3 | 0 | 0 | 0 | 0 | 0 | 1 | 1 | 6 | 0 | 2 | 0 | 0 | -11 | 2 | |
| 12 Reshanda Gray | F | 20:19 | 1 | 4 | 0 | 0 | 1 | 2 | 2 | 8 | 10 | 2 | 5 | 1 | 2 | 0 | -1 | 3 | |
| 31 Tina Charles | C | 36:37 | 10 | 22 | 0 | 2 | 3 | 4 | 0 | 12 | 12 | 4 | 4 | 1 | 4 | 1 | 6 | 23 | |
| 25 Asia Durr | G | 27:25 | 5 | 11 | 0 | 2 | 0 | 0 | 0 | 2 | 2 | 2 | 1 | 0 | 0 | 0 | 12 | 10 | |
| 5 Kia Nurse | G | 37:03 | 8 | 11 | 4 | 6 | 6 | 6 | 0 | 5 | 5 | 1 | 2 | 0 | 1 | 2 | 0 | 26 | |
| 7 Avery Warley-Talbert | | 15:24 | 1 | 2 | 0 | 0 | 1 | 2 | 2 | 0 | 2 | 0 | 2 | 0 | 3 | 1 | 3 | 3 | |
| 30 Tanisha Wright | | 24:38 | 2 | 4 | 2 | 3 | 2 | 2 | 0 | 1 | 1 | 5 | 0 | 2 | 1 | 0 | 6 | 8 | |
| 4 Nayo Raincock-Ekunwe | | 07:40 | 0 | 2 | 0 | 0 | 0 | 0 | 0 | 1 | 1 | 0 | 1 | 0 | 0 | 0 | 0 | 0 | |
| 3 Tiffany Bias | | 12:03 | 2 | 4 | 1 | 3 | 0 | 0 | 0 | 1 | 1 | 1 | 0 | 0 | 1 | 0 | 5 | 5 | |
| 9 Rebecca Allen | DND - Injury/Illness - Hand | | | | | | | | | | | | | | | | | | |
| 21 Han Xu | DNP - Coach's decision | | | | | | | | | | | | | | | | | | |
| | | | 200:00 | 30 | 63 | 7 | 16 | 13 | 16 | 4 | 31 | 35 | 21 | 15 | 6 | 12 | 4 | 4 | 80 |
| | | | | 47.6% | | 43.8% | | 81.2% | | TM | REB: 7 | | | | | | | | TOT TO: 14 (18 PTS) |

HOME: PHOENIX MERCURY (5-6)

| | | POS | MIN | FG | FGA | 3P | 3PA | FT | FTA | OR | DR | TOT | A | PF | ST | TO | BS | +/- | PTS |
|----|-------------------|--------------------------------------|--------|-----|-----|-------|-----|-------|-----|----|--------|-----|----|----|----|----|----|-----|---------------------|
| 9 | Sophie Cunningham | F | 14:37 | 0 | 2 | 0 | 1 | 2 | 2 | 1 | 5 | 6 | 3 | 3 | 0 | 1 | 0 | 1 | 2 |
| 24 | DeWanna Bonner | F | 35:03 | 3 | 13 | 1 | 7 | 2 | 2 | 0 | 4 | 4 | 2 | 2 | 2 | 2 | 1 | 1 | 9 |
| 42 | Brittney Griner | C | 36:27 | 11 | 19 | 0 | 0 | 8 | 9 | 3 | 5 | 8 | 1 | 2 | 0 | 1 | 3 | -7 | 30 |
| 5 | Leilani Mitchell | G | 35:20 | 5 | 11 | 3 | 6 | 1 | 1 | 0 | 0 | 0 | 4 | 2 | 1 | 3 | 0 | 2 | 14 |
| 12 | Briann January | G | 29:10 | 2 | 9 | 1 | 5 | 0 | 0 | 0 | 1 | 1 | 2 | 0 | 0 | 2 | 0 | -11 | 5 |
| 17 | Essence Carson | | 18:29 | 2 | 6 | 1 | 2 | 2 | 2 | 0 | 0 | 0 | 3 | 0 | 1 | 1 | 0 | -3 | 7 |
| 31 | Sancho Lyttle | | 13:16 | 3 | 4 | 1 | 1 | 2 | 2 | 1 | 1 | 2 | 1 | 5 | 0 | 0 | 0 | -3 | 9 |
| 20 | Camille Little | | 15:07 | 0 | 1 | 0 | 1 | 0 | 0 | 0 | 5 | 5 | 0 | 1 | 0 | 0 | 1 | 3 | 0 |
| 11 | Alanna Smith | | 02:31 | 0 | 0 | 0 | 0 | 0 | 0 | 0 | 1 | 1 | 0 | 0 | 0 | 0 | 0 | -3 | 0 |
| 3 | Diana Taurasi | DND - Injury/Illness - Back | | | | | | | | | | | | | | | | | |
| 21 | Brianna Turner | DNP - Coach's decision | | | | | | | | | | | | | | | | | |
| 6 | Yvonne Turner | NWT - Personal - Overseas Commitment | | | | | | | | | | | | | | | | | |
| | | | 200:00 | 26 | 65 | 7 | 23 | 17 | 18 | 5 | 22 | 27 | 16 | 15 | 4 | 10 | 5 | -4 | 76 |
| | | | | 40% | | 30.4% | | 94.4% | | TM | REB: 7 | | | | | | | | TOT TO: 10 (13 PTS) |

| SCORE BY PERIOD | 1 | 2 | 3 | 4 | FINAL |
|-----------------|----|----|----|----|-------|
| Liberty | 17 | 23 | 23 | 17 | 80 |
| MERCURY | 26 | 15 | 23 | 12 | 76 |

Inactive: Liberty -

Inactive: Mercury -

Points in the Paint: Liberty 38 (19/33), MERCURY 26 (13/23) Biggest Lead: Liberty 5, MERCURY 13

2nd Chance Points: Liberty 9 (4/6), MERCURY 8 (1/3) Lead Changes: 9

Fast Break Points: Liberty 15 (7/10), MERCURY 5 (2/5) Times Tied: 9

Technical fouls - Defensive Three Seconds

Liberty (1) : Raincock-Ekunwe 0:20 1st

MERCURY (0) : NONE

MEMO: Mercury - Griner season high pts, 30 (prev. 26 (6/9/19 @ IND).

WOMEN'S NATIONAL BASKETBALL ASSOCIATION

OFFICIAL SCORER'S REPORT FINAL BOX

Tuesday, June 26, 2018 Westchester County Center, White Plains, NY
Officials: #39 Michael Price, #11 Randy Richardson, #13 Cheryl Flores

Game Duration: 1:49
Attendance: 1839

VISITOR: Phoenix Mercury (11-5)

| | POS | MIN | FG | FGA | 3P | 3PA | FT | FTA | OR | DR | TOT | A | PF | ST | TO | BS | +/- | PTS |
|--------------------|-----|-------|-------|-----|-------|-----|-------|-----|-----------|----|-----|---------------------|----|----|----|----|-----|-----|
| 24 DeWanna Bonner | F | 28:08 | 6 | 10 | 4 | 6 | 2 | 4 | 1 | 4 | 5 | 5 | 2 | 0 | 1 | 0 | 20 | 18 |
| 31 Sancho Lyttle | F | 25:55 | 4 | 11 | 0 | 0 | 4 | 4 | 1 | 4 | 5 | 1 | 3 | 0 | 1 | 0 | 12 | 12 |
| 42 Brittney Griner | C | 35:17 | 4 | 10 | 0 | 0 | 4 | 4 | 0 | 9 | 9 | 3 | 2 | 1 | 3 | 6 | 20 | 12 |
| 3 Diana Taurasi | G | 33:07 | 8 | 12 | 7 | 11 | 4 | 4 | 0 | 3 | 3 | 7 | 3 | 1 | 2 | 0 | 15 | 27 |
| 12 Briann January | G | 33:10 | 1 | 3 | 0 | 1 | 2 | 4 | 0 | 2 | 2 | 3 | 2 | 2 | 1 | 0 | 16 | 4 |
| 5 Leilani Mitchell | | 22:49 | 3 | 6 | 3 | 5 | 0 | 0 | 1 | 2 | 3 | 0 | 2 | 0 | 3 | 0 | -1 | 9 |
| 20 Camille Little | | 16:02 | 0 | 2 | 0 | 0 | 1 | 2 | 0 | 1 | 1 | 0 | 1 | 0 | 0 | 0 | 4 | 1 |
| 0 Angel Robinson | | 01:23 | 0 | 0 | 0 | 0 | 0 | 0 | 0 | 0 | 0 | 0 | 0 | 0 | 0 | 0 | -4 | 0 |
| 6 Yvonne Turner | | 01:23 | 0 | 0 | 0 | 0 | 0 | 0 | 0 | 0 | 0 | 0 | 0 | 0 | 1 | 0 | -4 | 0 |
| 8 Stephanie Talbot | | 01:23 | 0 | 0 | 0 | 0 | 0 | 0 | 0 | 0 | 0 | 0 | 0 | 0 | 1 | 0 | -4 | 0 |
| 21 Marie Göllich | | 01:23 | 0 | 0 | 0 | 0 | 0 | 0 | 0 | 0 | 0 | 0 | 0 | 0 | 0 | 0 | -4 | 0 |
| 200:00 | | | 26 | 54 | 14 | 23 | 17 | 22 | 3 | 25 | 28 | 19 | 15 | 4 | 13 | 6 | 14 | 83 |
| | | | 48.1% | | 60.9% | | 77.3% | | TM REB: 7 | | | TOT TO: 15 (22 PTS) | | | | | | |

HOME: NEW YORK LIBERTY (4-9)

| | POS | MIN | FG | FGA | 3P | 3PA | FT | FTA | OR | DR | TOT | A | PF | ST | TO | BS | +/- | PTS |
|---------------------|-----|---|-------|-----|-------|-----|-------|-----|------------|----|-----|--------------------|----|----|----|----|-----|-----|
| 1 Shavonte Zellous | F | 28:42 | 5 | 10 | 1 | 1 | 0 | 0 | 1 | 1 | 2 | 3 | 1 | 0 | 2 | 0 | -6 | 11 |
| 31 Tina Charles | F | 32:02 | 4 | 12 | 1 | 2 | 3 | 4 | 2 | 6 | 8 | 3 | 4 | 2 | 2 | 0 | -7 | 12 |
| 7 Kia Vaughn | C | 10:22 | 1 | 1 | 0 | 0 | 0 | 0 | 1 | 1 | 2 | 0 | 2 | 0 | 1 | 0 | -14 | 2 |
| 8 Bria Hartley | G | 23:53 | 5 | 10 | 1 | 3 | 0 | 0 | 0 | 5 | 5 | 3 | 0 | 1 | 1 | 0 | -5 | 11 |
| 10 Epiphanny Prince | G | 11:19 | 1 | 5 | 1 | 2 | 2 | 2 | 1 | 0 | 1 | 0 | 1 | 0 | 0 | 0 | -16 | 5 |
| 14 Sugar Rodgers | | 18:41 | 3 | 6 | 2 | 4 | 0 | 0 | 1 | 0 | 1 | 0 | 4 | 0 | 0 | 0 | -3 | 8 |
| 15 Brittany Boyd | | 16:07 | 2 | 7 | 0 | 1 | 0 | 0 | 0 | 4 | 4 | 7 | 1 | 0 | 4 | 0 | -9 | 4 |
| 17 Amanda Zahui B | | 22:15 | 4 | 8 | 1 | 2 | 1 | 4 | 0 | 1 | 1 | 0 | 3 | 0 | 1 | 0 | -4 | 10 |
| 5 Kia Nurse | | 18:41 | 1 | 3 | 1 | 3 | 1 | 2 | 1 | 1 | 2 | 1 | 2 | 2 | 1 | 1 | -4 | 4 |
| 41 Kiah Stokes | | 15:21 | 1 | 3 | 0 | 0 | 0 | 0 | 1 | 3 | 4 | 2 | 4 | 2 | 3 | 0 | -3 | 2 |
| 9 Rebecca Allen | | 02:37 | 0 | 1 | 0 | 1 | 0 | 0 | 0 | 1 | 1 | 0 | 0 | 0 | 0 | 0 | 1 | 0 |
| 0 Marissa Coleman | | DND - Injury/Illness - Right Ankle Sprain | | | | | | | | | | | | | | | | |
| 200:00 | | | 27 | 66 | 8 | 19 | 7 | 12 | 8 | 23 | 31 | 19 | 22 | 7 | 15 | 1 | -14 | 69 |
| | | | 40.9% | | 42.1% | | 58.3% | | TM REB: 11 | | | TOT TO: 16 (8 PTS) | | | | | | |

| SCORE BY PERIOD | 1 | 2 | 3 | 4 | FINAL |
|-----------------|----|----|----|----|-------|
| Mercury | 30 | 14 | 23 | 16 | 83 |
| LIBERTY | 16 | 21 | 11 | 21 | 69 |

Inactive: Mercury -

Inactive: Liberty -

Points in the Paint: Mercury 14 (7/16), LIBERTY 30 (15/35) Biggest Lead: Mercury 19, LIBERTY 0

2nd Chance Points: Mercury 2 (0/2), LIBERTY 9 (4/9) Lead Changes: 0

Fast Break Points: Mercury 11 (4/7), LIBERTY 9 (4/6) Times Tied: 0

Technical fouls - Defensive Three Seconds

Mercury (0) : NONE

LIBERTY (1) : Boyd 0:08 3rd

WOMEN'S NATIONAL BASKETBALL ASSOCIATION

OFFICIAL SCORER'S REPORT FINAL BOX

Tuesday, June 5, 2018 Madison Square Garden, New York, NY
Officials: #53 Jeff Smith, #34 Maj Forsberg, #45 Tom Mauer

Game Duration: 1:55
Attendance: 7215

VISITOR: Phoenix Mercury (5-3)

| | POS | MIN | FG | FGA | 3P | 3PA | FT | FTA | OR | DR | TOT | A | PF | ST | TO | BS | +/- | PTS |
|--------------------|-----|------------------------|-----|-----|-------|-----|-------|-----|-----------|----|-----|---------------------|----|----|----|----|-----|-----|
| 24 DeWanna Bonner | F | 33:25 | 5 | 10 | 3 | 6 | 5 | 6 | 0 | 3 | 3 | 3 | 1 | 2 | 2 | 0 | 10 | 18 |
| 31 Sancho Lyttle | F | 31:03 | 3 | 6 | 0 | 0 | 0 | 0 | 0 | 5 | 5 | 3 | 0 | 3 | 0 | 1 | 11 | 6 |
| 42 Brittney Griner | C | 37:20 | 12 | 17 | 1 | 2 | 1 | 1 | 2 | 4 | 6 | 0 | 2 | 1 | 2 | 3 | 7 | 26 |
| 3 Diana Taurasi | G | 34:32 | 5 | 14 | 1 | 9 | 10 | 10 | 0 | 3 | 3 | 8 | 2 | 1 | 3 | 0 | 16 | 21 |
| 12 Briann January | G | 30:44 | 0 | 1 | 0 | 1 | 0 | 0 | 1 | 1 | 2 | 4 | 0 | 0 | 3 | 0 | 2 | 0 |
| 20 Camille Little | | 10:52 | 0 | 2 | 0 | 0 | 1 | 2 | 0 | 1 | 1 | 1 | 3 | 0 | 1 | 0 | -5 | 1 |
| 8 Stephanie Talbot | | 03:28 | 0 | 0 | 0 | 0 | 0 | 0 | 0 | 0 | 0 | 0 | 0 | 0 | 0 | 0 | -9 | 0 |
| 5 Leilani Mitchell | | 15:13 | 3 | 5 | 2 | 4 | 0 | 0 | 0 | 1 | 1 | 2 | 0 | 1 | 0 | 0 | -2 | 8 |
| 21 Marie Glich | | 00:45 | 0 | 0 | 0 | 0 | 0 | 0 | 0 | 0 | 0 | 0 | 0 | 0 | 0 | 0 | -1 | 0 |
| 6 Yvonne Turner | | 02:38 | 0 | 1 | 0 | 1 | 0 | 0 | 0 | 0 | 0 | 0 | 1 | 0 | 0 | 0 | 1 | 0 |
| 0 Angel Robinson | | DNP - Coach's decision | | | | | | | | | | | | | | | | |
| 200:00 | | | 28 | 56 | 7 | 23 | 17 | 19 | 3 | 18 | 21 | 21 | 9 | 8 | 11 | 4 | 6 | 80 |
| | | | 50% | | 30.4% | | 89.5% | | TM REB: 8 | | | TOT TO: 12 (11 PTS) | | | | | | |

HOME: NEW YORK LIBERTY (2-3)

| | POS | MIN | FG | FGA | 3P | 3PA | FT | FTA | OR | DR | TOT | A | PF | ST | TO | BS | +/- | PTS |
|---------------------|-----|-----------------------------------|-------|-----|-------|-----|-----|-----|-----------|----|-----|---------------------|----|----|----|----|-----|-----|
| 0 Marissa Coleman | F | 21:25 | 3 | 5 | 2 | 4 | 0 | 0 | 3 | 2 | 5 | 2 | 1 | 0 | 0 | 0 | -4 | 8 |
| 31 Tina Charles | F | 36:33 | 12 | 25 | 1 | 4 | 0 | 0 | 2 | 6 | 8 | 4 | 3 | 2 | 4 | 0 | -3 | 25 |
| 7 Kia Vaughn | C | 19:54 | 1 | 5 | 0 | 0 | 0 | 0 | 1 | 4 | 5 | 0 | 3 | 1 | 0 | 0 | -8 | 2 |
| 1 Shavonte Zellous | G | 24:12 | 1 | 5 | 0 | 1 | 0 | 0 | 0 | 1 | 1 | 3 | 4 | 0 | 1 | 0 | 2 | 2 |
| 8 Bria Hartley | G | 33:33 | 7 | 13 | 4 | 8 | 0 | 2 | 2 | 1 | 3 | 5 | 1 | 2 | 3 | 0 | -2 | 18 |
| 17 Amanda Zahui B | | 15:54 | 3 | 6 | 1 | 3 | 2 | 2 | 5 | 3 | 8 | 1 | 4 | 0 | 5 | 0 | 7 | 9 |
| 5 Kia Nurse | | 22:58 | 2 | 7 | 0 | 4 | 1 | 1 | 3 | 0 | 3 | 2 | 1 | 0 | 1 | 0 | -4 | 5 |
| 9 Rebecca Allen | | 05:56 | 0 | 1 | 0 | 0 | 0 | 0 | 2 | 1 | 3 | 0 | 0 | 0 | 0 | 0 | -7 | 0 |
| 15 Brittany Boyd | | 04:02 | 1 | 3 | 0 | 0 | 0 | 0 | 1 | 0 | 1 | 0 | 0 | 0 | 1 | 0 | -5 | 2 |
| 14 Sugar Rodgers | | 15:33 | 1 | 5 | 1 | 4 | 0 | 0 | 0 | 2 | 2 | 2 | 2 | 1 | 2 | 0 | -6 | 3 |
| 10 Epiphanny Prince | | DND - Injury/Illness - Concussion | | | | | | | | | | | | | | | | |
| 41 Kiah Stokes | | DND - Injury/Illness - Left Foot | | | | | | | | | | | | | | | | |
| 200:00 | | | 31 | 75 | 9 | 28 | 3 | 5 | 19 | 20 | 39 | 19 | 19 | 6 | 17 | 0 | -6 | 74 |
| | | | 41.3% | | 32.1% | | 60% | | TM REB: 8 | | | TOT TO: 17 (18 PTS) | | | | | | |

| SCORE BY PERIOD | 1 | 2 | 3 | 4 | FINAL |
|-----------------|----|----|----|----|-------|
| Mercury | 21 | 22 | 14 | 23 | 80 |
| LIBERTY | 27 | 11 | 17 | 19 | 74 |

Inactive: Mercury -
Inactive: Liberty -
Points in the Paint: Mercury 28 (14/19), LIBERTY 38 (19/32) Biggest Lead: Mercury 6, LIBERTY 8
2nd Chance Points: Mercury 2 (1/3), LIBERTY 16 (7/19) Lead Changes: 17
Fast Break Points: Mercury 5 (2/3), LIBERTY 0 (0/3) Times Tied: 8
Technical fouls - Individual
Mercury (1): Taurasi 8:05 2nd
LIBERTY (1): Charles 7:43 4th
Technical fouls - Defensive Three Seconds
Mercury (0) : NONE
LIBERTY (1) : Allen 9:29 2nd

2019 NEW YORK LIBERTY ROSTER

ALPHABETICAL

| No. | Name | Pos | Ht. | Wt. | DOB | College/COUNTRY |
|-----|----------------------|-----|------|-----|------------|-----------------|
| 9 | Rebecca Allen | F/G | 6-2 | 162 | 11/06/1992 | Australia |
| 15 | Brittany Boyd | G | 5-9 | 156 | 06/11/1993 | California |
| 31 | Tina Charles | C | 6-4 | 186 | 12/05/1988 | Connecticut |
| 25 | Asia Durr | G | 5-10 | 151 | 04/05/1997 | Louisville |
| 12 | Reshanda Gray | F | 6-2 | 192 | 06/01/1993 | California |
| 14 | Bria Hartley | G | 5-8 | 148 | 09/30/1992 | Connecticut |
| 23 | Marine Johannès | G | 5-10 | 134 | 01/21/1995 | France |
| 5 | Kia Nurse | G | 6-0 | 168 | 02/22/1996 | Connecticut |
| 4 | Nayo Raincock-Ekunwe | F | 6-2 | 175 | 08/29/1991 | Canada |
| 30 | Tanisha Wright | G | 5-11 | 166 | 11/29/1983 | Penn State |
| 21 | Han Xu | C | 6-9 | 193 | 10/31/1999 | China |
| 17 | Amanda Zahui B. | C | 6-5 | 250 | 09/08/1993 | Minnesota |

| | |
|--|---------------------|
| Head Coach | Katie Smith |
| General Manager | Jonathan Kolb |
| Assistant Coach | Herb Williams |
| Director of Player & Franchise Development | Teresa Weatherspoon |
| Head Athletic Trainer | Theresa Acosta |

NUMERICAL

| No. | Name | Pos | Ht. | Wt. | DOB | College/COUNTRY |
|-----|----------------------|-----|------|-----|------------|-----------------|
| 4 | Nayo Raincock-Ekunwe | F | 6-2 | 175 | 08/29/1991 | Canada |
| 5 | Kia Nurse | G | 6-0 | 168 | 02/22/1996 | Connecticut |
| 9 | Rebecca Allen | F/G | 6-2 | 162 | 11/06/1992 | Australia |
| 12 | Reshanda Gray | F | 6-2 | 192 | 06/01/1993 | California |
| 14 | Bria Hartley | G | 5-8 | 148 | 09/30/1992 | Connecticut |
| 15 | Brittany Boyd | G | 5-9 | 156 | 06/11/1993 | California |
| 17 | Amanda Zahui B. | C | 6-5 | 250 | 09/08/1993 | Minnesota |
| 21 | Han Xu | C | 6-9 | 193 | 10/31/1999 | China |
| 23 | Marine Johannès | G | 5-10 | 134 | 01/21/1995 | France |
| 25 | Asia Durr | G | 5-10 | 151 | 04/05/1997 | Louisville |
| 30 | Tanisha Wright | G | 5-11 | 166 | 11/29/1983 | Penn State |
| 31 | Tina Charles | C | 6-4 | 186 | 12/05/1988 | Connecticut |

HOW THE TEAM WAS BUILT

WNBA DRAFT

Asia Durr, 1st round pick in the 2019 WNBA Draft, 2nd overall selection.
Han Xu, 2nd round pick in the 2019 WNBA Draft, 14th overall selection.

TRADES

Tanisha Wright was acquired from Minnesota in exchange for a second-round pick in the 2020 draft.

SIGNINGS

| | |
|-----------------|-------------------|
| Amanda Zahui B. | February 11, 2019 |
| Reshanda Gray | March 11, 2019 |
| Marine Johannès | March 23, 2019 |
| Brittany Boyd | March 27, 2019 |
| Tiffany Bias | April 18, 2019 |
| Tina Charles | May 3, 2019 |
| Asia Durr | May 3, 2019 |

WAIVERS

| | |
|----------------------|--------------|
| Kolby Morgan | May 10, 2019 |
| Talia Caldwell | May 15, 2019 |
| Bianca Cuevas-Moore | May 20, 2019 |
| Kelly Faris | May 20, 2019 |
| Megan Huff | May 20, 2019 |
| Avery Warley-Talbert | May 23, 2019 |
| Tiffany Bias | July 8, 2019 |
| Avery Warley-Talbert | July 8, 2019 |

PRONUNCIATION GUIDE

| PLAYER/COACH | PRONUNCIATION |
|----------------------|----------------------|
| Tanisha Wright | Ta-NEE-sha |
| Han Xu | Shoo |
| Amanda Zahui B | Zow-EEE |
| Nayo Raincock-Ekunwe | N-eye-yo E-Coone-Way |
| Marine Johannès | Ma-Reen Joe-Han-nis |



KATIE SMITH

HEAD COACH | THE OHIO STATE UNIVERSITY | '96

In 2019, Katie Smith enters her sixth season as a member of the New York Liberty coaching staff and her second as the team's head coach. Smith was elevated to the top position on the bench in October 2017, becoming the seventh head coach in franchise history. Smith originally joined the Liberty staff in 2014 and spent two seasons as an assistant to head coach Bill Laimbeer before assuming the role of associate head coach for the 2016-17 campaigns. In her four seasons working alongside Laimbeer, the Liberty posted an overall regular-season record of 81-55 (.596), including three straight 20-win seasons that earned three consecutive playoff berths from 2015 through 2017.

One of the greatest players in WNBA history, Smith played 15 seasons in the league and, coupled with her two seasons in the ABL, retired as the all-time scoring leader in women's professional basketball history with 7,885-career points. At the time of her retirement, she ranked second in WNBA history with 6,452 career points and first in both three-point field goals made (906) and attempted (2,466), fourth in free throws made (1,440), and 10th in all-time assists (1,258). Smith was a two-time WNBA champion (2006, 2008) playing for Laimbeer, then the Shock head coach. She also voted as one of the Top 15 players in WNBA history in 2011 (the league's 15th season) and as one of the Top 20 best and most influential players in WNBA history in 2016, the league's 20th campaign.

Her resume also includes seven selections to the WNBA All-Star Game and three Olympic gold medals as a member of the U.S. Women's National Team (2000, 2004, 2008). Smith began her pro career in the ABL as a member of the Columbus Quest, playing for head coach Brian Agler and winning that league's only two championships. She then signed with the WNBA in 1999, joining the expansion Minnesota Lynx along with Agler, who served as that team's first head coach. Eight years later in 2006, and by then a member of the Detroit Shock playing for Laimbeer, Smith won her first WNBA championship. In that same 2006 season, Smith - playing in her sixth WNBA All-Star Game - became the first player to notch All-Star wins as a member of both the Eastern and Western Conference teams. Following the 2009 season, her last with the Shock, Smith went on to play for the WNBA's Washington Mystics (2010) and Seattle Storm (2011-12). Then, in her final season as a player, she joined the Liberty, reuniting with Laimbeer, then the New York head coach. One year later she would join Laimbeer's and embark upon her coaching career in the professional ranks.

Smith's success also extended to the international level where, in addition to winning three Olympic gold medals, she helped the U.S. Women's National Team win gold at the FIBA World Championships in 1998 and 2002. Smith has a deep connection with Ohio State University. As a student-athlete, the Logan, Ohio native helped the Buckeyes to the NCAA championship game as a freshman and went on to break the Big Ten scoring record for points scored in a career in men's or women's basketball. On Jan. 21, 2001, The Ohio State University honored her as the first female Buckeye athlete to have her number retired. Smith spent several WNBA off-seasons on the Buckeyes' women's basketball staff.

2018 NEW YORK LIBERTY OVERALL RECORD (7-27)

CAREER COACHING HIGHLIGHTS

Earned first win against Dallas on May 29, 2018 by the score of 94-89

CAREER PLAYING HIGHLIGHTS

Played 15 seasons in the WNBA, retiring in 2013 after playing one year with the New York Liberty

Retired as the all-time scoring leader in women's professional basketball history with 7,885-career points and ranked second in WNBA history with 6,452 points

Two-time WNBA Champion (2006, 2008) winning twice with the Detroit Shock

Voted as one of the top-15 players in WNBA history

Voted as one of the top-20 best and most influential players in WNBA history in 2016

Seven-time WNBA All-Star

Three-time Olympic Gold Medalist (2000, 2004, 2008)

2018 Naismith Memorial Hall of Fame Inductee

SMITH'S CAREER COACHING RECORD

| Season | Team | Record |
|--------|------------------|--------|
| 2018 | New York Liberty | 7-27 |

LIBERTY 2019 MISCELLANEOUS STATS

INCLUDES GAMES OF FRIDAY, AUGUST 16, 2019
NEW YORK LIBERTY / MISCELLANEOUS STATISTICS

| | RECORD | HOME | ROAD | OT |
|---------|--------|------|------|----|
| Overall | 8-17 | 4- 8 | 4- 9 | |
| EASTERN | 1- 8 | 0- 4 | 1- 4 | |
| WESTERN | 7- 9 | 4- 4 | 3- 5 | |

TEAM WINNING & LOSING STREAKS:

| OVERALL | HOME | ROAD |
|----------------------------|------------------------|------------------------|
| Loss- 7 | Loss- 3 | Loss- 6 |
| Long:Win - 4 | Win - 2 | Win - 3 |
| Loss- 7 | Loss- 3 | Loss- 6 |
| Last:Win -07/20 vsLA 83-78 | Win -07/20 vsLA 83-78 | Win -07/05 @ PHO 80-76 |
| Loss-08/16 @ DAL 77-83 | Loss-08/13 vsMIN 73-89 | Loss-08/16 @ DAL 77-83 |

| | WON | LOST | OFFENSE | VsOPP | HOME ATTENDANCE |
|------|-----|------|----------|------------|-----------------|
| May | 0 | 1 | 70+ 7-11 | .500+ 6-11 | 12 Games |
| June | 5 | 6 | 70< 1- 6 | .500< 2- 5 | 28,893 Total |
| July | 3 | 4 | DEFENSE | | 2,408 Average |
| Aug. | 0 | 6 | 70+ 5-17 | | 7,715 High |
| Sep. | 0 | 0 | 70< 3- 0 | | |

| MARGINS | 1 | 2 | 3 | 4 | 5 | 6 | 7 | 8 | 9 | 10 | 11 | 12 | 13 | 14 | 15 | 16 | 17 | 18 | 19 | 20 | 21 | 22 | 23 |
|----------|----|----|----|----|----|----|----|----|----|----|----|----|----|----|----|----|----|----|----|----|----|----|-----|
| Won By: | 2 | | | 1 | 1 | 2 | | | | 1 | | | | | | 1 | | | | | | | |
| Lost By: | 1 | | | | 1 | 1 | 1 | 1 | 4 | | | | | | 3 | 2 | | | | | | | 1 |
| | 24 | 25 | 26 | 27 | 28 | 29 | 30 | 31 | 32 | 33 | 34 | 35 | 36 | 37 | 38 | 39 | 40 | 41 | 42 | 43 | 44 | 45 | 46+ |
| Won By: | | | | | | | | | | | | | | | | | | | | | | | |
| Lost By: | | | | | | | | 1 | | | 1 | | | | | | | | | | | | |

| At Start Of: | OVERALL | HOME | ROAD | FG% | OVERALL | HOME | ROAD |
|--------------|---------|------|------|--------|---------|------|------|
| 2nd- Ahead: | 4- 5 | 3- 3 | 1- 2 | -44% | 3-14 | 2- 7 | 1- 7 |
| -Behind: | 3-12 | 1- 5 | 2- 7 | 45-49% | 5- 2 | 2- 1 | 3- 1 |
| - Tied: | 1- 0 | 0- 0 | 1- 0 | 50-54% | 0- 1 | 0- 0 | 0- 1 |
| 3rd- Ahead: | 6- 4 | 4- 1 | 2- 3 | 55-59% | 0- 0 | 0- 0 | 0- 0 |
| -Behind: | 2-13 | 0- 7 | 2- 6 | +60% | 0- 0 | 0- 0 | 0- 0 |
| - Tied: | 0- 0 | 0- 0 | 0- 0 | | | | |
| 4th- Ahead: | 4- 2 | 3- 1 | 1- 1 | | | | |
| -Behind: | 3-15 | 1- 7 | 2- 8 | | | | |
| - Tied: | 1- 0 | 0- 0 | 1- 0 | | | | |

LIBERTY 2019 OVERALL STATS

Through August 16 (8-17)

NEW YORK LIBERTY

2019 REGULAR SEASON STATISTICS

| PLAYER | | | | -FIELD GOALS- | | | -3-POINT FG-- | | | -FREE THROWS- | | | --REBOUNDS-- | | | | PF | DQ | STL | TO | BLK | PTS | AVG |
|-----------------|----|----|------|---------------|------|------|---------------|-----|-------|---------------|-----|-------|--------------|-----|-----|-----|-----|----|-----|-----|-----|------|------|
| | G | GS | MIN | FG | FGA | PCT | FG | FGA | PCT | FT | FTA | PCT | OFF | DEF | TOT | AST | | | | | | | |
| Charles | 25 | 25 | 789 | 168 | 442 | .380 | 11 | 53 | .208 | 85 | 108 | .787 | 46 | 141 | 187 | 52 | 72 | 0 | 19 | 69 | 20 | 432 | 17.3 |
| Nurse | 25 | 25 | 763 | 107 | 277 | .386 | 44 | 135 | .326 | 96 | 111 | .865 | 17 | 46 | 63 | 52 | 42 | 0 | 21 | 45 | 4 | 354 | 14.2 |
| Durr | 18 | 15 | 480 | 71 | 152 | .467 | 15 | 51 | .294 | 18 | 22 | .818 | 5 | 24 | 29 | 31 | 34 | 0 | 10 | 21 | 7 | 175 | 9.7 |
| Hartley | 15 | 9 | 340 | 42 | 121 | .347 | 13 | 41 | .317 | 42 | 54 | .778 | 13 | 37 | 50 | 52 | 34 | 0 | 14 | 30 | 0 | 139 | 9.3 |
| Zahui B. | 16 | 16 | 385 | 54 | 114 | .474 | 17 | 51 | .333 | 21 | 25 | .840 | 18 | 91 | 109 | 13 | 52 | 0 | 14 | 25 | 28 | 146 | 9.1 |
| Allen | 15 | 1 | 255 | 46 | 101 | .455 | 23 | 47 | .489 | 10 | 11 | .909 | 8 | 27 | 35 | 11 | 35 | 0 | 8 | 12 | 14 | 125 | 8.3 |
| Johannes | 10 | 0 | 156 | 22 | 46 | .478 | 12 | 30 | .400 | 5 | 5 | 1.000 | 3 | 13 | 16 | 15 | 15 | 0 | 3 | 11 | 3 | 61 | 6.1 |
| Boyd | 24 | 17 | 513 | 55 | 139 | .396 | 4 | 18 | .222 | 22 | 30 | .733 | 17 | 74 | 91 | 116 | 49 | 0 | 40 | 69 | 4 | 136 | 5.7 |
| Gray | 25 | 9 | 424 | 57 | 112 | .509 | 1 | 1 | 1.000 | 26 | 45 | .578 | 54 | 97 | 151 | 15 | 89 | 0 | 16 | 26 | 7 | 141 | 5.6 |
| Wright | 22 | 8 | 418 | 33 | 86 | .384 | 10 | 27 | .370 | 17 | 21 | .810 | 16 | 47 | 63 | 92 | 42 | 0 | 24 | 44 | 5 | 93 | 4.2 |
| Raincock-Ekunwe | 19 | 0 | 243 | 28 | 52 | .538 | 1 | 3 | .333 | 6 | 11 | .545 | 24 | 23 | 47 | 8 | 29 | 0 | 6 | 15 | 2 | 63 | 3.3 |
| Xu | 12 | 0 | 93 | 15 | 33 | .455 | 2 | 6 | .333 | 1 | 2 | .500 | 1 | 8 | 9 | 2 | 4 | 0 | 2 | 0 | 2 | 33 | 2.8 |
| Bias | 12 | 0 | 105 | 7 | 28 | .250 | 3 | 19 | .158 | 6 | 7 | .857 | 0 | 6 | 6 | 11 | 7 | 0 | 3 | 8 | 0 | 23 | 1.9 |
| Warley-Talbert | 3 | 0 | 35 | 1 | 5 | .200 | 0 | 0 | --- | 1 | 2 | .500 | 3 | 4 | 7 | 0 | 7 | 0 | 0 | 4 | 2 | 3 | 1.0 |
| LIBERTY | 25 | - | 5000 | 706 | 1708 | .413 | 156 | 482 | .324 | 356 | 454 | .784 | 225 | 638 | 863 | 470 | 511 | 0 | 180 | 401 | 98 | 1924 | 77.0 |
| OPPONENTS | 25 | - | 5000 | 755 | 1733 | .436 | 177 | 510 | .347 | 418 | 534 | .783 | 238 | 640 | 878 | 498 | 433 | 2 | 212 | 342 | 116 | 2105 | 84.2 |

| PLAYER | -- SINGLE-GAME HIGHS -- | | | | | | | | ----- AVERAGE PER GAME ----- | | | | | | | | -CAREER HIGHS (C=SET, T=TIED THIS SEASON)- | | | | | | | |
|-----------------|-------------------------|-----|-----|----|----|----|-----|--|------------------------------|------|------|------|------|------|------|--|--|-----|-----|-----|-----|-----|-----|--|
| | MIN | REB | AST | ST | TO | BL | PTS | | MIN | REB | AST | STL | TO | BLK | PTS | | FG | FGA | FT | FTA | REB | AST | PTS | |
| Charles | 38 | 14 | 6 | 4 | 7 | 3 | 32 | | 31.6 | 7.5 | 2.1 | 0.76 | 2.8 | 0.80 | 17.3 | | 14 | 27 | 19 | 24 | 23 | 10 | 36 | |
| Nurse | 40 | 7 | 4 | 4 | 5 | 2 | 26 | | 30.5 | 2.5 | 2.1 | 0.84 | 1.8 | 0.16 | 14.2 | | 9T | 19C | 15T | 16T | 9 | 4T | 34 | |
| Durr | 36 | 4 | 4 | 4 | 5 | 3 | 20 | | 26.7 | 1.6 | 1.7 | 0.56 | 1.2 | 0.39 | 9.7 | | 10C | 16C | 4C | 4C | 4C | 4C | 20C | |
| Hartley | 33 | 6 | 7 | 3 | 4 | 0 | 17 | | 22.7 | 3.3 | 3.5 | 0.93 | 2.0 | 0.00 | 9.3 | | 11 | 16 | 8C | 8T | 6T | 7T | 26 | |
| Zahui B. | 35 | 13 | 5 | 3 | 5 | 6 | 37 | | 24.1 | 6.8 | 0.8 | 0.88 | 1.6 | 1.75 | 9.1 | | 13C | 16C | 6 | 8 | 13C | 5C | 37C | |
| Allen | 29 | 5 | 4 | 3 | 2 | 4 | 28 | | 17.0 | 2.3 | 0.7 | 0.53 | 0.8 | 0.93 | 8.3 | | 11C | 15C | 4 | 4 | 9 | 4C | 28C | |
| Johannes | 22 | 5 | 4 | 1 | 3 | 2 | 17 | | 15.6 | 1.6 | 1.5 | 0.30 | 1.1 | 0.30 | 6.1 | | 6C | 7C | 2C | 2C | 5C | 4C | 17C | |
| Boyd | 31 | 9 | 12 | 4 | 6 | 1 | 15 | | 21.4 | 3.8 | 4.8 | 1.67 | 2.9 | 0.17 | 5.7 | | 7 | 14C | 8 | 11 | 9T | 12C | 22 | |
| Gray | 31 | 15 | 2 | 3 | 3 | 1 | 13 | | 17.0 | 6.0 | 0.6 | 0.64 | 1.0 | 0.28 | 5.6 | | 9 | 12 | 6 | 8 | 15C | 2C | 22 | |
| Wright | 30 | 9 | 7 | 3 | 4 | 1 | 10 | | 19.0 | 2.9 | 4.2 | 1.09 | 2.0 | 0.23 | 4.2 | | 10 | 22 | 10 | 10 | 9T | 12 | 25 | |
| Raincock-Ekunwe | 24 | 6 | 1 | 2 | 2 | 1 | 8 | | 12.8 | 2.5 | 0.4 | 0.32 | 0.8 | 0.11 | 3.3 | | 4 | 9 | 6 | 10 | 6T | 2 | 12 | |
| Xu | 16 | 3 | 2 | 1 | 0 | 1 | 7 | | 7.7 | 0.8 | 0.2 | 0.17 | 0.0 | 0.17 | 2.8 | | 3C | 8C | 1C | 2C | 3C | 2C | 7C | |
| Bias | 18 | 1 | 3 | 1 | 3 | 0 | 9 | | 8.7 | 0.5 | 0.9 | 0.25 | 0.7 | 0.00 | 1.9 | | 3T | 7T | 4 | 4 | 2 | 3T | 10 | |
| Warley-Talbert | 15 | 3 | 0 | 0 | 3 | 1 | 3 | | 11.8 | 2.3 | 0.0 | 0.00 | 1.3 | 0.67 | 1.0 | | 5 | 7 | 5 | 5 | 13 | 1 | 12 | |
| LIBERTY | 200 | 46 | 30 | 13 | 22 | 9 | 98 | | 200.0 | 34.5 | 18.8 | 7.20 | 16.0 | 3.92 | 77.0 | | 41 | 89 | 32 | 41 | 57 | 32 | 107 | |
| OPPONENTS | 200 | 46 | 30 | 13 | 21 | 9 | 101 | | 200.0 | 35.1 | 19.9 | 8.48 | 13.7 | 4.64 | 84.2 | | 41 | 91 | 34 | 42 | 54 | 30T | 105 | |

LIBERTY 2019 GAME BY GAME STATS

NEW YORK LIBERTY

| Date | Opponent | Team/Opp | Home | Road | Total | High Scoring | High Rebounds | High Assists | Opponent Scoring | Atten. |
|--------|--------------|----------|------|------|-------|--------------|---------------|--------------|------------------|--------|
| May 24 | INDIANA | L 80- 81 | 0-1 | 0-0 | 0-1 | Charles-32 | Charles-12 | Hartley-4 | T. Mitchell-22 | 1,965 |
| Jun 1 | @Indiana | L 77- 92 | 0-1 | 0-1 | 0-2 | Charles-15 | Gray-9 | Boyd-6 | K. Mitchell-23 | 5,003 |
| Jun 4 | LOS ANGELES | L 73- 78 | 0-2 | 0-1 | 0-3 | Charles-21 | Charles-14 | Boyd-6 | Gray-29 | 3,579 |
| Jun 7 | WASHINGTON | L 85- 94 | 0-3 | 0-1 | 0-4 | Charles-27 | Zahui B.-7 | Hartley-5 | Cloud-26 | 1,567 |
| | | | | | | | | Boyd-5 | | |
| Jun 9 | LAS VEGAS | W 88- 78 | 1-3 | 0-1 | 1-4 | Charles-21 | Zahui B.-9 | Hartley-6 | McBride-25 | 1,447 |
| Jun 12 | MINNESOTA | W 75- 69 | 2-3 | 0-1 | 2-4 | Nurse-26 | Zahui B.-13 | Boyd-7 | Fowles-16 | 1,181 |
| Jun 14 | @Las Vegas | L 65-100 | 2-3 | 0-2 | 2-5 | Nurse-12 | Gray-5 | Boyd-5 | Plum-19 | 4,110 |
| Jun 15 | @Los Angeles | W 98- 92 | 2-3 | 1-2 | 3-5 | Zahui B.-37 | Charles-13 | Boyd-12 | C. Ogwumike-26 | 11,388 |
| Jun 19 | CHICAGO | L 83- 91 | 2-4 | 1-2 | 3-6 | Durr-19 | Zahui B.-10 | Boyd-7 | Vandersloot-25 | 1,585 |
| Jun 22 | @Minnesota | L 83- 92 | 2-4 | 1-3 | 3-7 | Nurse-24 | Charles-9 | Boyd-8 | Sims-20 | 8,600 |
| Jun 28 | DALLAS | W 69- 68 | 3-4 | 1-3 | 4-7 | Nurse-17 | Gray-11 | Boyd-7 | Thornton-20 | 2,191 |
| Jun 30 | @Atlanta | W 74- 58 | 3-4 | 2-3 | 5-7 | Charles-24 | Gray-15 | Wright-4 | Sykes-18 | 4,359 |
| | | | | | | | | Durr-4 | | |
| | | | | | | | | Boyd-4 | | |
| Jul 3 | @Seattle | W 84- 83 | 3-4 | 3-3 | 6-7 | Charles-26 | Gray-8 | Boyd-10 | Russell-19 | 8,710 |
| Jul 5 | @Phoenix | W 80- 76 | 3-4 | 4-3 | 7-7 | Nurse-26 | Charles-12 | Boyd-6 | Griner-30 | 9,560 |
| Jul 7 | LAS VEGAS | L 58- 90 | 3-5 | 4-3 | 7-8 | Charles-13 | Charles-8 | Wright-5 | McBride-24 | 1,971 |
| Jul 12 | @Chicago | L 83- 99 | 3-5 | 4-4 | 7-9 | Nurse-18 | Gray-6 | Hartley-5 | Vandersloot-17 | 7,221 |
| | | | | | | | | Boyd-5 | Lavender-17 | |
| Jul 14 | @Seattle | L 69- 78 | 3-5 | 4-5 | 7-10 | Nurse-19 | Zahui B.-8 | Hartley-5 | Langhorne-19 | 6,733 |
| Jul 20 | LOS ANGELES | W 83- 78 | 4-5 | 4-5 | 8-10 | Johannes-17 | Gray-8 | Boyd-6 | N. Ogwumike-20 | 2,195 |
| Jul 24 | @Connecticut | L 63- 70 | 4-5 | 4-6 | 8-11 | Charles-13 | Charles-11 | Wright-5 | J. Thomas-18 | 8,249 |
| Aug 1 | @Dallas | L 64- 87 | 4-5 | 4-7 | 8-12 | Nurse-13 | Boyd-6 | Wright-4 | Ogunbowale-22 | 4,011 |
| Aug 4 | CONNECTICUT | L 79- 94 | 4-6 | 4-7 | 8-13 | Charles-20 | Charles-10 | Zahui B.-5 | Williams-28 | 1,927 |
| Aug 7 | @Chicago | L 92-101 | 4-6 | 4-8 | 8-14 | Charles-24 | Zahui B.-9 | Wright-7 | Quigley-22 | 5,797 |
| | | | | | | | | Hartley-7 | | |
| Aug 11 | SEATTLE | L 69- 84 | 4-7 | 4-8 | 8-15 | Charles-22 | Charles-8 | Wright-7 | Clark-21 | 7,715 |
| Aug 13 | MINNESOTA | L 73- 89 | 4-8 | 4-8 | 8-16 | Allen-28 | Boyd-9 | Boyd-7 | Sims-17 | 1,570 |
| Aug 16 | @Dallas | L 77- 83 | 4-8 | 4-9 | 8-17 | Charles-25 | Wright-9 | Wright-7 | Gray-22 | 4,070 |

LIBERTY 2019 SEASON HIGHS

Through games of August 16
2019 HIGH GAMES

NEW YORK LIBERTY

Page 1

| PLAYER | MINUTES | FIELD GOALS | FREE THROWS | ----- OFFENSIVE | REBOUNDS DEFENSIVE | ----- TOTAL | ASSISTS | STEALS | TURNOVERS | BLOCKED SHOTS | POINTS |
|-----------------|-------------------------------|-----------------------------|-----------------------------|------------------------------|-----------------------------|-----------------------------|-----------------------------|------------------------------|------------------------------|------------------------------|------------------------------|
| REBECCA ALLEN | 29 AUG. 13 vs Minn. | 11C AUG. 13 vs Minn. | 3 AUG. 1 at Dal. | 2 (3) AUG. 13 vs Minn. | 5 AUG. 1 at Dal. | 5 (2) AUG. 1 at Dal. | 4C AUG. 7 at Chi. | 3T AUG. 1 at Dal. | 2 (3) AUG. 4 vs Conn. | 4C AUG. 7 at Chi. | 28C AUG. 13 vs Minn. |
| TIFFANY BIAS | 18T JUN. 14 at L.V. | 3T JUN. 14 at L.V. | 2 (3) JUN. 15 at L.A. | 0 | 1 (6) JUL. 5 at Phoe. | 1 (6) JUL. 5 at Phoe. | 3T JUN. 28 vs Dal. | 1T(3) JUL. 3 at Sea. | 3T JUN. 14 at L.V. | 0T | 9 JUN. 14 at L.V. |
| BRITTANY BOYD | 31 (2) JUL. 7 vs L.V. | 6 (2) JUN. 30 at Atl. | 5 AUG. 1 at Dal. | 3T AUG. 13 vs Minn. | 7 JUN. 28 vs Dal. | 9T AUG. 13 vs Minn. | 12C JUN. 15 at L.A. | 4T(3) JUL. 7 vs L.V. | 6 (3) AUG. 1 at Dal. | 1 (4) JUL. 24 at Conn. | 15 JUN. 30 at Atl. |
| TINA CHARLES | 38 JUN. 22 at Minn. | 11 (3) AUG. 7 at Chi. | 10 MAY. 24 vs Ind. | 4 (3) AUG. 4 vs Conn. | 12 JUL. 5 at Phoe. | 14 JUN. 4 vs L.A. | 6 AUG. 7 at Chi. | 4 JUN. 30 at Atl. | 7 JUN. 1 at Ind. | 3 (2) JUL. 24 at Conn. | 32 MAY. 24 vs Ind. |
| ASIA DURR | 36C JUN. 28 vs Dal. | 10C JUN. 12 vs Minn. | 4C JUN. 19 vs Chi. | 1C(5) AUG. 7 at Chi. | 4C JUL. 3 at Sea. | 4C JUL. 3 at Sea. | 4C(2) JUL. 7 vs L.V. | 4C JUN. 7 vs Wash. | 5C JUN. 12 vs Minn. | 3C JUL. 7 vs L.V. | 20C JUN. 12 vs Minn. |
| RESHANDA GRAY | 31C JUL. 28 vs Dal. | 6 JUN. 28 vs Dal. | 4 (2) AUG. 11 vs Sea. | 6C MAY. 24 vs Ind. | 10C JUN. 30 at Atl. | 15C JUN. 30 at Atl. | 2C(3) JUL. 5 at Phoe. | 3C(2) JUL. 20 vs L.A. | 3 AUG. 4 vs Conn. | 1 (7) AUG. 7 at Chi. | 13 JUN. 28 vs Dal. |
| BRIA HARTLEY | 33 AUG. 11 vs Sea. | 5 (2) AUG. 11 vs Sea. | 8C JUL. 12 at Chi. | 4C JUN. 1 at Ind. | 5 (2) JUN. 9 vs L.V. | 6T(4) AUG. 11 vs Sea. | 7T AUG. 7 at Chi. | 3 JUN. 1 at Ind. | 4 (4) AUG. 13 vs Minn. | 0 | 17 (2) AUG. 11 vs Sea. |
| MARINE JOHANNES | 22C JUL. 20 vs L.A. | 6C(2) AUG. 7 at Chi. | 2C(2) AUG. 4 vs Conn. | 2C AUG. 16 at Dal. | 5C JUL. 20 vs L.A. | 5C JUL. 20 vs L.A. | 4C AUG. 4 vs Conn. | 1C(3) AUG. 13 vs Minn. | 3C JUL. 20 vs L.A. | 2C JUL. 24 at Conn. | 17C JUL. 20 vs L.A. |
| KIA NURSE | 40T(2) JUN. 22 at Minn. | 9T(3) JUL. 3 at Sea. | 15T JUN. 15 at L.A. | 3T(3) AUG. 16 at Dal. | 6T JUN. 15 at L.A. | 7 JUN. 15 at L.A. | 4T(3) JUN. 28 vs Dal. | 4C JUN. 15 at L.A. | 5C AUG. 4 vs Conn. | 2C JUL. 5 at Phoe. | 26 (3) JUL. 5 at Phoe. |

Through games of August 16
2019 HIGH GAMES

NEW YORK LIBERTY

Page 2

| PLAYER | MINUTES | FIELD GOALS | FREE THROWS | ----- OFFENSIVE | REBOUNDS DEFENSIVE | ----- TOTAL | ASSISTS | STEALS | TURNOVERS | BLOCKED SHOTS | POINTS |
|----------------------|--------------------------------|-----------------------------|-----------------------------|------------------------------|------------------------------|----------------------------|------------------------------|-----------------------------|-----------------------------|------------------------------|-----------------------------|
| NAYO RAINCOCK-EKUNWE | 24C AUG. 1 at Dal. | 3 (4) JUL. 20 vs L.A. | 2 (2) AUG. 1 at Dal. | 4T JUL. 7 vs L.V. | 3T(2) AUG. 7 at Chi. | 6T JUL. 7 vs L.V. | 1 (8) AUG. 11 vs Sea. | 2T AUG. 11 vs Sea. | 2T(4) AUG. 7 at Chi. | 1T(2) JUN. 30 at Atl. | 8 (2) JUL. 20 vs L.A. |
| AVERY WARLEY-TALBERT | 15 JUL. 5 at Phoe. | 1 JUL. 5 at Phoe. | 1 JUL. 5 at Phoe. | 2 JUL. 5 at Phoe. | 3 JUL. 3 at Sea. | 3 JUL. 3 at Sea. | 0 | 0 | 3T JUL. 5 at Phoe. | 1 (2) JUL. 7 vs L.V. | 3 JUL. 5 at Phoe. |
| TANISHA WRIGHT | 30 AUG. 16 at Dal. | 4 (3) JUL. 3 at Sea. | 4 (2) JUL. 14 at Sea. | 4 AUG. 16 at Dal. | 5 (2) AUG. 16 at Dal. | 9T AUG. 16 at Dal. | 7 (3) AUG. 16 at Dal. | 3 (3) JUL. 14 at Sea. | 4 (2) AUG. 16 at Dal. | 1 (5) JUL. 12 at Chi. | 10 JUL. 3 at Sea. |
| HAN XU | 16C JUN. 14 at L.V. | 3C(3) JUL. 7 vs L.V. | 1C JUN. 28 vs Dal. | 1C JUL. 7 vs L.V. | 2C(2) JUL. 7 vs L.V. | 3C JUL. 7 vs L.V. | 2C JUL. 12 at Chi. | 1C(2) JUL. 12 at Chi. | 0C | 1C(2) JUL. 7 vs L.V. | 7C(2) JUL. 7 vs L.V. |
| AMANDA ZAHUI B. | 35C JUN. 15 at L.A. | 13C JUN. 15 at L.A. | 5 JUL. 12 at Chi. | 3 (2) JUN. 12 vs Minn. | 10C(3) JUN. 19 vs Chi. | 13C JUN. 12 vs Minn. | 5C AUG. 4 vs Conn. | 3C JUN. 12 vs Minn. | 5T MAY. 24 vs Ind. | 6C JUN. 4 vs L.A. | 37C JUN. 15 at L.A. |
| LIBERTY High Games | 200 (25) AUG. 16 at Dal. | 38 AUG. 7 at Chi. | 27 JUL. 20 vs L.A. | 17 JUN. 1 at Ind. | 34 JUN. 9 vs L.V. | 46 JUN. 9 vs L.V. | 30 AUG. 7 at Chi. | 13 JUN. 12 vs Minn. | 22 AUG. 1 at Dal. | 9 AUG. 7 at Chi. | 98 JUN. 15 at L.A. |
| LIBERTY Low Games | 200 (25) AUG. 16 at Dal. | 20 AUG. 1 at Dal. | 5 (2) AUG. 7 at Chi. | 3 JUN. 14 at L.V. | 16 JUN. 22 at Minn. | 21 JUN. 14 at L.V. | 13 JUN. 14 at L.V. | 3 (2) AUG. 16 at Dal. | 9 (3) JUN. 28 vs Dal. | 0 AUG. 16 at Dal. | 58 JUL. 7 vs L.V. |
| OPPONENTS High Games | 200 (25) AUG. 16 at Dal. | 39 JUN. 15 at L.A. | 29 JUN. 14 at L.V. | 15 JUN. 9 vs L.V. | 38 JUN. 14 at L.V. | 46 JUN. 14 at L.V. | 30 JUL. 12 at Chi. | 13 AUG. 1 at Dal. | 21 JUN. 12 vs Minn. | 9 JUN. 30 at Atl. | 101 AUG. 7 at Chi. |
| OPPONENTS Low Games | 200 (25) AUG. 16 at Dal. | 19 JUN. 30 at Atl. | 4 JUN. 12 vs Minn. | 5 (4) JUL. 20 vs L.A. | 18 AUG. 16 at Dal. | 26 JUL. 20 vs L.A. | 14 (2) JUN. 30 at Atl. | 4 JUL. 5 at Phoe. | 8 AUG. 7 at Chi. | 2 (2) JUL. 24 at Conn. | 58 JUN. 30 at Atl. |

MERCURY 2019 MISCELLANEOUS STATS

INCLUDES GAMES OF FRIDAY, AUGUST 16, 2019
PHOENIX MERCURY / MISCELLANEOUS STATISTICS

| | RECORD | HOME | ROAD | OT |
|---------|--------|------|------|----|
| Overall | 12-13 | 8- 4 | 4- 9 | |
| EASTERN | 7- 6 | 5- 2 | 2- 4 | |
| WESTERN | 5- 7 | 3- 2 | 2- 5 | |

TEAM WINNING & LOSING STREAKS:

| OVERALL | | | HOME | | | ROAD | | |
|-----------------|-------|-------|------------|-------|-------|------------------|-------|--|
| Win - | 1 | | Win - | 1 | | Loss- | 3 | |
| Long:Win - | 3 | | Win - | 4 | | Win - | 2 | |
| Loss- | 3 | | Loss- | 2 | | Loss- | 3 | |
| Last:Win -08/16 | vsATL | 77-68 | Win -08/16 | vsATL | 77-68 | Win -07/20 @ DAL | 70-66 | |
| Loss-08/14 | vsCT | 71-78 | Loss-08/14 | vsCT | 71-78 | Loss-08/08 @ LA | 74-84 | |

| | WON | LOST | OFFENSE | | | | VsOPP | HOME ATTENDANCE | | |
|------|-----|------|---------|----|----|-------|-------|-----------------|---------|--|
| May | 1 | 1 | 70+ | 9- | 6 | .500+ | 5- 9 | 12 | Games | |
| June | 4 | 4 | 70< | 3- | 7 | .500< | 7- 3 | 118,075 | Total | |
| July | 5 | 4 | DEFENSE | | | | | 9,840 | Average | |
| Aug. | 2 | 4 | 70+ | 5- | 10 | | | 14,090 | High | |
| Sep. | 0 | 0 | 70< | 7- | 3 | | | | | |

| MARGINS | 1 | 2 | 3 | 4 | 5 | 6 | 7 | 8 | 9 | 10 | 11 | 12 | 13 | 14 | 15 | 16 | 17 | 18 | 19 | 20 | 21 | 22 | 23 |
|----------|----|----|----|----|----|----|----|----|----|----|----|----|----|----|----|----|----|----|----|----|----|----|-----|
| Won By: | | 3 | | 1 | 1 | | 1 | | 1 | 1 | | | | | | | | 1 | | | 1 | 1 | 1 |
| Lost By: | | 1 | 1 | 1 | | 2 | 2 | | 1 | 1 | | | 1 | | 2 | | 1 | | | | | | |
| | 24 | 25 | 26 | 27 | 28 | 29 | 30 | 31 | 32 | 33 | 34 | 35 | 36 | 37 | 38 | 39 | 40 | 41 | 42 | 43 | 44 | 45 | 46+ |
| Won By: | | | | | | | | | | | | | | | | | | | | | | | |
| Lost By: | | | | | | | | | | | | | | | | | | | | | | | |

| At Start Of: | OVERALL | HOME | ROAD | FG% | OVERALL | HOME | ROAD |
|--------------|---------|------|------|--------|---------|------|------|
| 2nd- Ahead: | 6- 3 | 4- 1 | 2- 2 | -44% | 5-12 | 3- 4 | 2- 8 |
| -Behind: | 5- 6 | 4- 2 | 1- 4 | 45-49% | 2- 0 | 1- 0 | 1- 0 |
| - Tied: | 1- 4 | 0- 1 | 1- 3 | 50-54% | 4- 1 | 3- 0 | 1- 1 |
| 3rd- Ahead: | 9- 4 | 5- 2 | 4- 2 | 55-59% | 1- 0 | 1- 0 | 0- 0 |
| -Behind: | 3- 8 | 3- 2 | 0- 6 | +60% | 0- 0 | 0- 0 | 0- 0 |
| - Tied: | 0- 1 | 0- 0 | 0- 1 | | | | |
| 4th- Ahead: | 8- 1 | 5- 1 | 3- 0 | | | | |
| -Behind: | 4-11 | 3- 2 | 1- 9 | | | | |
| - Tied: | 0- 1 | 0- 1 | 0- 0 | | | | |

MERCURY 2019 OVERALL STATS

Through August 16 (12-13)

PHOENIX MERCURY

2019 REGULAR SEASON STATISTICS

| PLAYER | G | GS | MIN | FG | FGA | PCT | FG | FGA | PCT | FT | FTA | PCT | OFF | DEF | TOT | AST | PF | DQ | STL | TO | BLK | PTS | AVG |
|--------------|----|----|------|-----|------|------|-----|-----|------|-----|-----|------|-----|-----|-----|-----|-----|----|-----|-----|-----|------|------|
| Griner | 23 | 23 | 763 | 187 | 346 | .540 | 1 | 2 | .500 | 71 | 87 | .816 | 38 | 124 | 162 | 53 | 61 | 0 | 16 | 56 | 47 | 446 | 19.4 |
| Bonner | 25 | 25 | 848 | 151 | 393 | .384 | 41 | 149 | .275 | 115 | 125 | .920 | 30 | 160 | 190 | 68 | 39 | 0 | 34 | 41 | 16 | 458 | 18.3 |
| Mitchell | 23 | 18 | 710 | 100 | 224 | .446 | 57 | 127 | .449 | 50 | 58 | .862 | 10 | 67 | 77 | 98 | 55 | 0 | 22 | 39 | 7 | 307 | 13.3 |
| Y. Turner | 20 | 12 | 448 | 44 | 126 | .349 | 19 | 54 | .352 | 35 | 39 | .897 | 8 | 52 | 60 | 51 | 30 | 0 | 14 | 45 | 1 | 142 | 7.1 |
| January | 23 | 21 | 655 | 56 | 140 | .400 | 22 | 60 | .367 | 22 | 26 | .846 | 6 | 24 | 30 | 78 | 52 | 0 | 23 | 39 | 2 | 156 | 6.8 |
| Carson | 17 | 13 | 355 | 37 | 109 | .339 | 10 | 33 | .303 | 22 | 25 | .880 | 9 | 36 | 45 | 27 | 19 | 0 | 11 | 11 | 7 | 106 | 6.2 |
| Taurasi | 1 | 1 | 16 | 0 | 4 | .000 | 0 | 3 | .000 | 5 | 6 | .833 | 0 | 3 | 3 | 4 | 2 | 0 | 0 | 1 | 0 | 5 | 5.0 |
| Lyttle | 13 | 2 | 196 | 21 | 51 | .412 | 1 | 4 | .250 | 5 | 8 | .625 | 12 | 31 | 43 | 5 | 22 | 0 | 8 | 6 | 2 | 48 | 3.7 |
| Little | 20 | 0 | 299 | 26 | 58 | .448 | 5 | 12 | .417 | 16 | 22 | .727 | 14 | 40 | 54 | 18 | 29 | 0 | 7 | 21 | 5 | 73 | 3.7 |
| Cunningham | 23 | 5 | 292 | 18 | 56 | .321 | 10 | 36 | .278 | 24 | 26 | .923 | 3 | 30 | 33 | 17 | 40 | 0 | 9 | 14 | 4 | 70 | 3.0 |
| B. Turner | 20 | 5 | 240 | 26 | 52 | .500 | 0 | 0 | --- | 7 | 9 | .778 | 32 | 38 | 70 | 12 | 27 | 1 | 2 | 13 | 9 | 59 | 3.0 |
| Taylor (TOT) | 11 | 0 | 85 | 10 | 25 | .400 | 0 | 1 | .000 | 6 | 8 | .750 | 8 | 13 | 21 | 8 | 9 | 0 | 1 | 7 | 1 | 26 | 2.4 |
| Taylor (PHO) | 3 | 0 | 20 | 0 | 3 | .000 | 0 | 0 | --- | 1 | 2 | .500 | 4 | 3 | 7 | 1 | 3 | 0 | 0 | 2 | 0 | 1 | 0.3 |
| Smith | 18 | 0 | 134 | 8 | 41 | .195 | 2 | 18 | .111 | 1 | 2 | .500 | 11 | 24 | 35 | 4 | 18 | 0 | 5 | 8 | 5 | 19 | 1.1 |
| Carter | 6 | 0 | 24 | 1 | 5 | .200 | 0 | 4 | .000 | 0 | 0 | --- | 0 | 0 | 0 | 1 | 5 | 0 | 1 | 2 | 0 | 2 | 0.3 |
| MERCURY | 25 | - | 5000 | 675 | 1608 | .420 | 168 | 502 | .335 | 374 | 435 | .860 | 177 | 632 | 809 | 437 | 402 | 1 | 152 | 322 | 105 | 1892 | 75.7 |
| OPPONENTS | 25 | - | 5000 | 724 | 1724 | .420 | 171 | 505 | .339 | 262 | 345 | .759 | 249 | 662 | 911 | 428 | 466 | 1 | 139 | 342 | 86 | 1881 | 75.2 |

| | -- SINGLE-GAME HIGHS -- | | | | | | | AVERAGE PER GAME | | | | | | | --CAREER HIGHS (C=SET, T=TIED THIS SEASON)-- | | | | | | |
|--------------|-------------------------|-----|-----|----|----|----|-----|------------------|------|------|------|------|------|------|--|-----|-----|-----|-----|-----|-----|
| PLAYER | MIN | REB | AST | ST | TO | BL | PTS | MIN | REB | AST | STL | TO | BLK | PTS | FG | FGA | FT | FTA | REB | AST | PTS |
| Griner | 38 | 13 | 8 | 3 | 6 | 4 | 31 | 33.2 | 7.0 | 2.3 | 0.70 | 2.4 | 2.04 | 19.4 | 15 | 26C | 12 | 14 | 18 | 8C | 38 |
| Bonner | 39 | 14 | 6 | 4 | 4 | 3 | 31 | 33.9 | 7.6 | 2.7 | 1.36 | 1.6 | 0.64 | 18.3 | 12 | 28 | 13 | 14 | 16 | 7 | 38 |
| Mitchell | 38 | 7 | 11 | 4 | 5 | 2 | 28 | 30.9 | 3.3 | 4.3 | 0.96 | 1.7 | 0.30 | 13.3 | 10C | 15C | 11C | 12C | 9 | 11C | 28C |
| Y. Turner | 36 | 7 | 10 | 2 | 5 | 1 | 22 | 22.4 | 3.0 | 2.6 | 0.70 | 2.3 | 0.05 | 7.1 | 8C | 12T | 9C | 10C | 9 | 10C | 22C |
| January | 36 | 5 | 7 | 6 | 3 | 1 | 18 | 28.5 | 1.3 | 3.4 | 1.00 | 1.7 | 0.09 | 6.8 | 8T | 18 | 14 | 15 | 7 | 10 | 23 |
| Carson | 33 | 5 | 3 | 2 | 3 | 1 | 20 | 20.9 | 2.6 | 1.6 | 0.65 | 0.6 | 0.41 | 6.2 | 11 | 21 | 8 | 10 | 11 | 7 | 28 |
| Taurasi | 16 | 3 | 4 | 0 | 1 | 0 | 5 | 16.0 | 3.0 | 4.0 | 0.00 | 1.0 | 0.00 | 5.0 | 17 | 33 | 17 | 18 | 13 | 14 | 47 |
| Lyttle | 21 | 7 | 2 | 2 | 1 | 1 | 9 | 15.1 | 3.3 | 0.4 | 0.62 | 0.5 | 0.15 | 3.7 | 13 | 27 | 10 | 12 | 21 | 8 | 31 |
| Little | 26 | 6 | 3 | 2 | 3 | 3 | 11 | 15.0 | 2.7 | 0.9 | 0.35 | 1.1 | 0.25 | 3.7 | 12 | 19 | 12 | 14 | 15 | 7 | 31 |
| Cunningham | 23 | 6 | 3 | 2 | 2 | 1 | 19 | 12.7 | 1.4 | 0.7 | 0.39 | 0.6 | 0.17 | 3.0 | 5C | 6C | 6C | 7C | 6C | 3C | 19C |
| B. Turner | 35 | 14 | 3 | 1 | 4 | 2 | 12 | 12.0 | 3.5 | 0.6 | 0.10 | 0.7 | 0.45 | 3.0 | 6C | 9C | 2C | 3C | 14C | 3C | 12C |
| Taylor (TOT) | 17 | 5 | 2 | 1 | 2 | 1 | 13 | 7.7 | 1.9 | 0.7 | 0.09 | 0.6 | 0.09 | 2.4 | 5C | 10 | 5 | 7 | 7 | 2T | 13C |
| Taylor (PHO) | 11 | 3 | 1 | 0 | 2 | 0 | 1 | 6.5 | 2.3 | 0.3 | 0.00 | 0.7 | 0.00 | 0.3 | | | | | | | |
| Smith | 18 | 6 | 1 | 1 | 2 | 2 | 7 | 7.5 | 1.9 | 0.2 | 0.28 | 0.4 | 0.28 | 1.1 | 3C | 7C | 1C | 2C | 6C | 1C | 7C |
| Carter | 7 | 0 | 1 | 1 | 1 | 0 | 2 | 4.0 | 0.0 | 0.2 | 0.17 | 0.3 | 0.00 | 0.3 | 1C | 2C | 0C | 0C | 0C | 1C | 2C |
| MERCURY | 200 | 48 | 29 | 11 | 20 | 9 | 103 | 200.0 | 32.4 | 17.5 | 6.08 | 12.9 | 4.20 | 75.7 | 47 | 103 | 42 | 47 | 63 | 30 | 127 |
| OPPONENTS | 200 | 49 | 23 | 13 | 21 | 8 | 99 | 200.0 | 36.4 | 17.1 | 5.56 | 13.7 | 3.44 | 75.2 | 44 | 100 | 41 | 51 | 57 | 32 | 124 |

MERCURY 2019 GAME BY GAME STATS

PHOENIX MERCURY

| Date | Opponent | Team/Opp | Home | Road | Total | High Scoring | High Rebounds | High Assists | Opponent Scoring | Atten. |
|--------|--------------|----------|------|------|-------|------------------------|---------------------------------------|-----------------------------------|-----------------------------|--------|
| May 25 | @Seattle | L 68- 77 | 0-0 | 0-1 | 0-1 | Bonner-31 | Bonner-8 Griner-8 | Bonner-4 Y. Turner-4 | N. Howard-21 | 8,500 |
| May 31 | LAS VEGAS | W 86- 84 | 1-0 | 0-1 | 1-1 | Carson-20 | Bonner-12 | Y. Turner-10 | McBride-15 | 14,090 |
| Jun 6 | @Minnesota | L 56- 58 | 1-0 | 0-2 | 1-2 | Bonner-25 | Bonner-8 | Bonner-2 January-2 Griner-2 | Sims-15 | 8,001 |
| Jun 9 | @Indiana | W 94- 87 | 1-0 | 1-2 | 2-2 | Griner-26 | Bonner-7 | Mitchell-6 | K. Mitchell-26 | 3,336 |
| Jun 11 | @Chicago | L 75- 82 | 1-0 | 1-3 | 2-3 | Bonner-28 | Bonner-12 | Bonner-6 | DeShields-25 | 4,212 |
| Jun 14 | LOS ANGELES | L 68- 85 | 1-1 | 1-3 | 2-4 | Griner-24 | Griner-13 | January-5 | Gray-21 | 10,381 |
| Jun 20 | @Dallas | L 54- 69 | 1-1 | 1-4 | 2-5 | Mitchell-12 | Bonner-8 | January-3 | Thornton-18 | 4,626 |
| Jun 23 | LOS ANGELES | W 82- 72 | 2-1 | 1-4 | 3-5 | Mitchell-22 | Griner-9 | Mitchell-6 | Parker-12 | 10,132 |
| Jun 28 | INDIANA | W 91- 69 | 3-1 | 1-4 | 4-5 | Griner-23 | Bonner-5 B. Turner-5 Mitchell-5 | Mitchell-11 | C. Ogwumike-12 Dupree-15 | 9,435 |
| Jun 30 | @Seattle | W 69- 67 | 3-1 | 2-4 | 5-5 | Bonner-20 Griner-20 | Mitchell-7 Griner-7 | Mitchell-4 | Whitcomb-13 | 8,002 |
| Jul 5 | NEW YORK | L 76- 80 | 3-2 | 2-4 | 5-6 | Griner-30 | Griner-8 | Mitchell-4 | Nurse-26 | 9,560 |
| Jul 7 | ATLANTA | W 65- 63 | 4-2 | 2-4 | 6-6 | Griner-31 | Bonner-14 | Mitchell-4 | Sykes-29 | 9,850 |
| Jul 10 | @Washington | W 91- 68 | 4-2 | 3-4 | 7-6 | Griner-25 | Griner-8 | January-6 | Hawkins-24 | 15,377 |
| Jul 12 | @Connecticut | L 64- 79 | 4-2 | 3-5 | 7-7 | Bonner-20 | Bonner-8 | January-5 | A. Thomas-20 | 6,864 |
| Jul 14 | @Minnesota | L 62- 75 | 4-2 | 3-6 | 7-8 | Bonner-27 | Bonner-7 | Mitchell-5 | Sims-15 | 8,801 |
| Jul 17 | DALLAS | W 69- 64 | 5-2 | 3-6 | 8-8 | Griner-23 | Bonner-8 | January-5 | Ogunbowale-14 | 10,143 |
| Jul 20 | @Dallas | W 70- 66 | 5-2 | 4-6 | 9-8 | Griner-17 | Griner-8 | January-4 | Thornton-16 | 5,471 |
| Jul 23 | INDIANA | W 95- 77 | 6-2 | 4-6 | 10-8 | Bonner-22 Griner-22 | Griner-7 | January-7 | Wheeler-18 | 8,528 |
| Jul 30 | @Washington | L 93- 99 | 6-2 | 4-7 | 10-9 | Griner-30 | Griner-9 | Mitchell-8 | Delle Donne-33 | 3,819 |
| Aug 1 | @Connecticut | L 62- 68 | 6-2 | 4-8 | 10-10 | Bonner-20 | Bonner-10 | Bonner-4 | J. Jones-15 | 6,014 |
| Aug 4 | WASHINGTON | W103- 82 | 7-2 | 4-8 | 11-10 | Griner-26 | Griner-9 | Griner-8 | Meesseman-18 | 9,025 |
| Aug 8 | @Los Angeles | L 74- 84 | 7-2 | 4-9 | 11-11 | Griner-27 | B. Turner-14 | Mitchell-5 Y. Turner-5 | N. Ogwumike-24 | 10,345 |
| Aug 10 | DALLAS | L 77- 80 | 7-3 | 4-9 | 11-12 | Mitchell-23 | B. Turner-11 | Bonner-3 Mitchell-3 | Ogunbowale-23 | 9,717 |
| Aug 14 | CONNECTICUT | L 71- 78 | 7-4 | 4-9 | 11-13 | Bonner-17 | B. Turner-8 | Y. Turner-4 | J. Thomas-18 | 8,734 |
| Aug 16 | ATLANTA | W 77- 68 | 8-4 | 4-9 | 12-13 | Bonner-27 | Bonner-14 | Mitchell-5 | Montgomery-17 | 8,480 |

MERCURY 2019 SEASON HIGHS

Through games of August 16
2019 HIGH GAMES

PHOENIX MERCURY

Page 1

| PLAYER | MINUTES | FIELD GOALS | FREE THROWS | OFFENSIVE | REBOUNDS DEFENSIVE | TOTAL | ASSISTS | STEALS | TURNOVERS | BLOCKED SHOTS | POINTS |
|-------------------|-------------------------------|------------------------------|-----------------------------|------------------------------|------------------------------|------------------------------|------------------------------|-----------------------------|------------------------------|------------------------------|------------------------------|
| DEWANNA BONNER | 39 AUG. 16 vs Atl. | 10 (3) AUG. 16 vs Atl. | 12 JUL. 30 at Wash. | 4 JUN. 9 at Ind. | 12 (2) AUG. 16 vs Atl. | 14 (2) AUG. 16 vs Atl. | 6 (2) JUL. 30 at Wash. | 4 JUN. 23 vs L.A. | 4 (2) AUG. 1 at Conn. | 3 (2) AUG. 8 at L.A. | 31 MAY. 25 at Sea. |
| ESSENCE CARSON | 33 MAY. 31 vs L.V. | 7 MAY. 31 vs L.V. | 3 (3) JUN. 23 vs L.A. | 2 JUN. 9 at Ind. | 5 JUN. 23 vs L.A. | 5 (5) JUL. 20 at Dal. | 3 (2) JUL. 5 vs N.Y. | 2 (3) JUL. 17 vs Dal. | 3 JUN. 23 vs L.A. | 1 (7) JUL. 14 at Minn. | 20 MAY. 31 vs L.V. |
| ARICA CARTER | 7C AUG. 8 at L.A. | 1C AUG. 4 vs Wash. | 0C | 0C | 0C | 0C | 1C AUG. 8 at L.A. | 1C AUG. 8 at L.A. | 1C(2) AUG. 8 at L.A. | 0C | 2C AUG. 4 vs Wash. |
| SOPHIE CUNNINGHAM | 23C JUL. 23 vs Ind. | 5C JUN. 28 vs Ind. | 6C JUN. 28 vs Ind. | 1C(3) JUL. 5 vs N.Y. | 5C JUL. 5 vs N.Y. | 6C JUL. 5 vs N.Y. | 3C JUL. 5 vs N.Y. | 2C JUL. 20 at Dal. | 2C(3) JUN. 28 vs Ind. | 1C(4) AUG. 1 at Conn. | 19C JUN. 28 vs Ind. |
| BRITTNEY GRINER | 38 JUL. 30 at Wash. | 14 JUL. 30 at Wash. | 9 JUL. 7 vs Atl. | 6T JUN. 14 vs L.A. | 9 (2) AUG. 4 vs Wash. | 13 JUN. 14 vs L.A. | 8C AUG. 4 vs Wash. | 3T JUN. 6 at Minn. | 6 MAY. 25 at Sea. | 4 (3) JUL. 4 vs Wash. | 31 JUL. 7 vs Atl. |
| BRIANN JANUARY | 36 (2) JUN. 23 vs L.A. | 8T JUL. 10 at Wash. | 4 (2) JUN. 20 at Dal. | 1 (6) AUG. 14 vs Conn. | 4 (3) JUL. 10 at Wash. | 5 JUL. 10 at Wash. | 7 JUL. 23 vs Ind. | 6T MAY. 25 at Sea. | 3 (6) AUG. 16 vs Atl. | 1 (2) AUG. 16 vs Atl. | 18 JUL. 10 at Wash. |
| CAMILLE LITTLE | 26 (2) AUG. 14 vs Conn. | 5 JUL. 23 vs Ind. | 6 JUL. 17 vs Dal. | 3 AUG. 1 at Conn. | 6 AUG. 14 vs Conn. | 6 (3) AUG. 16 vs Atl. | 3 (2) AUG. 16 vs Atl. | 2 (2) AUG. 16 vs Atl. | 3 (2) AUG. 14 vs Conn. | 3 JUL. 17 vs Dal. | 11 (2) JUL. 23 vs Ind. |
| SANCHO LYTTLE | 21 JUL. 7 vs Atl. | 4 JUL. 10 at Wash. | 2 (2) JUL. 5 vs N.Y. | 3 (2) JUL. 10 at Wash. | 5 MAY. 31 vs L.V. | 7 (2) JUL. 10 at Wash. | 2 JUL. 12 at Conn. | 2 JUN. 9 at Ind. | 1 (6) JUL. 12 at Conn. | 1 (2) JUN. 11 at Chi. | 9 JUL. 5 vs N.Y. |
| LEILANI MITCHELL | 38 JUL. 7 vs Atl. | 10C JUL. 30 at Wash. | 11C AUG. 10 vs Dal. | 2 AUG. 16 vs Atl. | 6 (2) JUN. 30 at Sea. | 7 (2) JUN. 30 at Sea. | 11C JUN. 28 vs Ind. | 4 (2) AUG. 1 at Conn. | 5T JUL. 14 at Minn. | 2T AUG. 1 at Conn. | 28C JUL. 30 at Wash. |

Through games of August 16
2019 HIGH GAMES

PHOENIX MERCURY

Page 2

| PLAYER | MINUTES | FIELD GOALS | FREE THROWS | OFFENSIVE | REBOUNDS DEFENSIVE | TOTAL | ASSISTS | STEALS | TURNOVERS | BLOCKED SHOTS | POINTS |
|-------------------------------|--------------------------------|------------------------------|------------------------------|-------------------------------|-----------------------------|---------------------------|-----------------------------|------------------------------|-------------------------------|-----------------------------|-------------------------------|
| ALANNA SMITH | 18C(3) JUL. 14 at Minn. | 3C JUN. 6 at Minn. | 1C JUN. 11 at Chi. | 2C(4) JUL. 14 at Minn. | 4C JUN. 9 at Ind. | 6C JUN. 9 at Ind. | 1C(4) JUL. 20 at Dal. | 1C(5) JUL. 23 vs Ind. | 2C(2) JUN. 6 at Minn. | 2C JUL. 14 at Minn. | 7C JUN. 6 at Minn. |
| DIANA TAURASI | 16 JUL. 12 at Conn. | 0 | 5 JUL. 12 at Conn. | 0 | 3 JUL. 12 at Conn. | 3 JUL. 12 at Conn. | 4 JUL. 12 at Conn. | 0 | 1 JUL. 12 at Conn. | 0 | 5 JUL. 12 at Conn. |
| ASIA TAYLOR Ind.-Min.-Pho. | 17 JUL. 10 at Chi. | 5C JUL. 10 at Chi. | 3 JUL. 10 at Chi. | 3T AUG. 8 at L.A. | 3 JUL. 17 vs Sea. | 5 JUL. 17 vs Sea. | 2T(3) JUL. 17 vs Sea. | 1 JUL. 17 vs Sea. | 2 (2) AUG. 14 vs Conn. | 1T JUL. 10 at Chi. | 13C JUL. 10 at Chi. |
| ASIA TAYLOR Pho. | 11 AUG. 14 vs Conn. | 0 | 1 AUG. 14 vs Conn. | 3T AUG. 8 at L.A. | 2 AUG. 14 vs Conn. | 3 AUG. 8 at L.A. | 1 AUG. 8 at L.A. | 0 | 2 AUG. 14 vs Conn. | 0 | 1 AUG. 14 vs Conn. |
| BRIANNA TURNER | 35C AUG. 16 vs Atl. | 6C AUG. 4 vs Wash. | 2C(3) AUG. 14 vs Conn. | 8C AUG. 8 at L.A. | 6C(2) AUG. 16 vs Atl. | 14C AUG. 8 at L.A. | 3C JUL. 30 at Wash. | 1C(2) JUL. 20 at Dal. | 4C AUG. 14 vs Conn. | 2C(3) AUG. 16 vs Atl. | 12C(2) AUG. 14 vs Conn. |
| YVONNE TURNER | 36C(2) AUG. 4 vs Wash. | 8C AUG. 4 vs Wash. | 9C AUG. 14 vs Conn. | 1 (8) AUG. 16 vs Atl. | 6 AUG. 8 at L.A. | 7 AUG. 8 at L.A. | 10C MAY. 31 vs L.V. | 2 (4) AUG. 14 vs Conn. | 5C MAY. 25 at Sea. | 1T JUN. 6 at Minn. | 22C AUG. 4 vs Wash. |
| MERCURY High Games | 200 (25) AUG. 16 vs Atl. | 39 (2) AUG. 4 vs Wash. | 29 AUG. 10 vs Dal. | 14 AUG. 10 vs Dal. | 36 JUL. 7 vs Atl. | 48 JUL. 7 vs Atl. | 29 JUL. 30 at Wash. | 11 JUL. 14 at Minn. | 20 (2) AUG. 14 vs Conn. | 9 AUG. 1 at Conn. | 103 AUG. 4 vs Wash. |
| MERCURY Low Games | 200 (25) AUG. 16 vs Atl. | 15 JUN. 20 at Dal. | 5 JUL. 10 at Wash. | 3 (3) JUL. 30 at Wash. | 18 JUN. 6 at Minn. | 24 JUL. 14 at Minn. | 9 JUN. 6 at Minn. | 3 JUL. 7 vs Atl. | 6 (2) JUN. 30 at Sea. | 0 AUG. 14 vs Conn. | 54 JUN. 20 at Dal. |
| OPPONENTS High Games | 200 (25) AUG. 16 vs Atl. | 40 JUL. 30 at Wash. | 20 AUG. 10 vs Dal. | 15 (2) JUL. 14 at Minn. | 35 JUN. 20 at Dal. | 49 JUN. 20 at Dal. | 23 AUG. 4 vs Wash. | 13 AUG. 1 at Conn. | 21 JUN. 20 at Dal. | 8 JUL. 7 vs Atl. | 99 JUL. 30 at Wash. |

Through games of August 16

PHOENIX MERCURY
2019 HIGH GAMES

Page 3

| PLAYER | MINUTES | FIELD GOALS | FREE THROWS | OFFENSIVE | REBOUNDS DEFENSIVE | TOTAL | ASSISTS | STEALS | TURNOVERS | BLOCKED SHOTS | POINTS |
|------------------------|--------------------------------|-------------------------|-------------------------|-------------------------|--------------------------|--------------------------|-------------------------|-------------------------|-------------------------|-------------------------|--------------------------|
| OPPONENTS Low Games | 200 (25) AUG. 16 vs Atl. | 21 JUL. 7 vs Atl. | 3 JUN. 6 at Minn. | 3 JUL. 23 vs Ind. | 20 JUL. 23 vs Ind. | 23 JUL. 23 vs Ind. | 9 JUN. 28 vs Ind. | 1 JUL. 20 at Dal. | 7 AUG. 4 vs Wash. | 0 AUG. 1 at Conn. | 58 JUN. 6 at Minn. |

"C" indicates a new career-high, "T" a tied career-high.

Numbers in parentheses indicate the number of games in which a player or team has reached a given total (if more than one).

2019 LEAGUE STANDINGS AS OF 8/17

| TEAM | RECORD |
|-----------------------------|---------------|
| 1. WASHINGTON MYSTICS | (19-7) |
| 2. CONNECTICUT SUN | (18-8) |
| 3. LAS VEGAS ACES | (17-9) |
| 4. LOS ANGELES SPARKS | (15-10) |
| 5. CHICAGO SKY | (15-10) |
| 6. SEATTLE STORM | (14-13) |
| 7. MINNESOTA LYNX | (13-13) |
| 8. PHOENIX MERCURY | (12-13) |
| 9. INDIANA FEVER | (9-16) |
| 10. DALLAS WINGS | (9-17) |
| 11. NEW YORK LIBERTY | (8-17) |
| 12. ATLANTA DREAM | (5-21) |



FORWARD/GUARD

#9 REBECCA ALLEN

FIFTH SEASON | AUSTRALIA | 6-2 | BORN NOVEMBER 6, 1992

2019 Season: 8.3 PPG, 2.3 RPG, 0.7 APG

REBECCA'S 2019 GAME BY GAME STATS

| DATE | OPP | RESULT | MIN | FGM-A | 3PM-A | FTM-A | OREB | DREB | REB | AST | STL | BLK | TO | PF | PTS |
|--------------|-------------|--------|-----|---------|--------|-------|------|------|-----|-----|-----|-----|----|----|-----|
| AUG 16, 2019 | NYL @ DAL | L | 14 | 0 - 2 | 0 - 0 | 2 - 2 | 0 | 1 | 1 | 0 | 0 | 0 | 1 | 2 | 2 |
| AUG 13, 2019 | NYL vs. MIN | L | 29 | 11 - 15 | 6 - 7 | 0 - 0 | 2 | 2 | 4 | 0 | 0 | 0 | 1 | 2 | 28 |
| AUG 11, 2019 | NYL vs. SEA | L | 19 | 4 - 9 | 0 - 2 | 0 - 0 | 0 | 1 | 1 | 0 | 1 | 0 | 1 | 5 | 8 |
| AUG 07, 2019 | NYL @ CHI | L | 17 | 7 - 13 | 6 - 11 | 1 - 2 | 0 | 0 | 0 | 4 | 0 | 4 | 1 | 3 | 21 |
| AUG 04, 2019 | NYL vs. CON | L | 14 | 2 - 4 | 0 - 2 | 0 - 0 | 0 | 3 | 3 | 0 | 0 | 2 | 2 | 1 | 4 |
| AUG 01, 2019 | NYL @ DAL | L | 15 | 3 - 6 | 2 - 2 | 3 - 3 | 0 | 5 | 5 | 0 | 3 | 0 | 1 | 2 | 11 |
| JUL 24, 2019 | NYL @ CON | L | 14 | 3 - 9 | 3 - 5 | 0 - 0 | 0 | 2 | 2 | 1 | 0 | 0 | 1 | 2 | 9 |
| JUL 20, 2019 | NYL vs. LAS | W | 11 | 1 - 3 | 0 - 1 | 0 - 0 | 0 | 0 | 0 | 0 | 0 | 0 | 0 | 4 | 2 |
| JUL 14, 2019 | NYL @ SEA | L | 17 | 1 - 3 | 0 - 1 | 0 - 0 | 2 | 1 | 3 | 2 | 0 | 1 | 0 | 1 | 2 |
| JUL 12, 2019 | NYL @ CHI | L | 12 | 3 - 6 | 0 - 0 | 0 - 0 | 0 | 2 | 2 | 1 | 0 | 0 | 0 | 0 | 6 |
| JUN 09, 2019 | NYL vs. LVA | W | 23 | 2 - 8 | 0 - 2 | 2 - 2 | 2 | 2 | 4 | 1 | 1 | 2 | 0 | 4 | 6 |
| JUN 07, 2019 | NYL vs. WAS | L | 23 | 5 - 10 | 3 - 7 | 0 - 0 | 1 | 3 | 4 | 0 | 0 | 3 | 2 | 4 | 13 |
| JUN 04, 2019 | NYL vs. LAS | L | 10 | 2 - 3 | 1 - 1 | 0 - 0 | 0 | 0 | 0 | 0 | 0 | 0 | 0 | 1 | 5 |
| JUN 01, 2019 | NYL @ IND | L | 19 | 0 - 7 | 0 - 3 | 2 - 2 | 0 | 1 | 1 | 2 | 1 | 0 | 0 | 0 | 2 |
| MAY 24, 2019 | NYL vs. IND | L | 19 | 2 - 3 | 2 - 3 | 0 - 0 | 1 | 4 | 5 | 0 | 2 | 2 | 2 | 4 | 6 |

CAREER REGULAR SEASON HIGHS

Per Game Highs

| | Season |
|--------------------|----------------------------|
| Points | 28 (Minnesota - 8/13/2019) |
| Rebounds | 5 (2 Times) |
| Defensive Rebounds | 5 (Dallas - 8/1/2019) |
| Offensive Rebounds | 2 (3 Times) |
| Assists | 4 (Chicago - 8/7/2019) |
| Blocks | 4 (Chicago - 8/7/2019) |
| Steals | 3 (Dallas - 8/1/2019) |
| FGs Made | 11 (Minnesota - 8/13/2019) |
| FGs Attempted | 15 (Minnesota - 8/13/2019) |
| 3PT FGs Made | 6 (2 Times) |
| 3PT FGs Attempted | 11 (Chicago - 8/7/2019) |
| Minutes Played | 29 (Minnesota - 8/13/2019) |

Career

| | |
|--------------------|----------------------------|
| Points | 28 (Minnesota - 8/13/2019) |
| Rebounds | 9 (Seattle - 5/26/2017) |
| Defensive Rebounds | 7 (Seattle - 5/26/2017) |
| Offensive Rebounds | 3 (Minnesota - 6/29/2016) |
| Assists | 4 (Chicago - 8/7/2019) |
| Blocks | 4 (Chicago - 8/7/2019) |
| Steals | 3 (4 Times) |
| FGs Made | 11 (Minnesota - 8/13/2019) |
| FGs Attempted | 15 (Minnesota - 8/13/2019) |
| 3PT FGs Made | 6 (2 Times) |
| 3PT FGs Attempted | 11 (Chicago - 8/7/2019) |
| Minutes Played | 35 (Chicago - 9/16/2016) |



GUARD

#15 BRITTANY BOYD

FIFTH SEASON | CALIFORNIA '15 | RICHMOND, CALIF. | 5-9 | BORN JUNE 11, 1993

2019 Season: 5.8 PPG, 3.8 RPG, 5.0 APG

BRITTANY'S 2019 GAME BY GAME STATS

| DATE | OPP | RESULT | MIN | FGM-A | 3PM-A | FTM-A | OREB | DREB | REB | AST | STL | BLK | TO | PF | PTS |
|--------------|-------------|--------|-----|-------|-------|-------|------|------|-----|-----|-----|-----|----|----|-----|
| AUG 16, 2019 | NYL @ DAL | L | 9 | 1-2 | 0-0 | 0-0 | 1 | 3 | 4 | 1 | 0 | 0 | 2 | 3 | 2 |
| AUG 13, 2019 | NYL vs. MIN | L | 20 | 2-6 | 0-2 | 0-0 | 3 | 6 | 9 | 7 | 2 | 0 | 5 | 2 | 4 |
| AUG 11, 2019 | NYL vs. SEA | L | 17 | 2-3 | 0-0 | 0-0 | 1 | 2 | 3 | 3 | 2 | 0 | 3 | 1 | 4 |
| AUG 04, 2019 | NYL vs. CON | L | 14 | 1-2 | 0-1 | 0-2 | 0 | 1 | 1 | 1 | 0 | 0 | 1 | 0 | 2 |
| AUG 01, 2019 | NYL @ DAL | L | 19 | 1-5 | 0-0 | 5-6 | 2 | 4 | 6 | 3 | 3 | 0 | 6 | 3 | 7 |
| JUL 24, 2019 | NYL @ CON | L | 14 | 3-5 | 1-1 | 0-0 | 1 | 2 | 3 | 1 | 2 | 1 | 2 | 1 | 7 |
| JUL 20, 2019 | NYL vs. LAS | W | 18 | 2-6 | 0-0 | 2-4 | 1 | 4 | 5 | 6 | 1 | 1 | 1 | 3 | 6 |
| JUL 14, 2019 | NYL @ SEA | L | 16 | 1-3 | 0-0 | 0-0 | 0 | 4 | 4 | 1 | 0 | 0 | 4 | 1 | 2 |
| JUL 12, 2019 | NYL @ CHI | L | 19 | 2-6 | 0-1 | 0-0 | 2 | 3 | 5 | 5 | 0 | 0 | 2 | 5 | 4 |
| JUL 07, 2019 | NYL vs. LVA | L | 31 | 3-8 | 0-1 | 2-2 | 0 | 3 | 3 | 1 | 4 | 0 | 6 | 1 | 8 |
| JUL 05, 2019 | NYL @ PHO | W | 19 | 1-3 | 0-0 | 0-0 | 0 | 1 | 1 | 6 | 2 | 0 | 0 | 0 | 2 |
| JUL 03, 2019 | NYL @ SEA | W | 31 | 3-8 | 1-1 | 0-0 | 1 | 2 | 3 | 10 | 3 | 0 | 3 | 1 | 7 |
| JUN 30, 2019 | NYL @ ATL | W | 29 | 6-8 | 1-1 | 2-2 | 1 | 6 | 7 | 4 | 1 | 0 | 3 | 2 | 15 |
| JUN 28, 2019 | NYL vs. DAL | W | 29 | 3-9 | 0-0 | 1-3 | 0 | 7 | 7 | 7 | 1 | 0 | 0 | 3 | 7 |
| JUN 22, 2019 | NYL @ MIN | L | 27 | 3-10 | 0-0 | 1-1 | 0 | 2 | 2 | 8 | 3 | 0 | 5 | 3 | 7 |
| JUN 19, 2019 | NYL vs. CHI | L | 30 | 6-14 | 0-2 | 2-2 | 1 | 4 | 5 | 7 | 0 | 0 | 4 | 4 | 14 |
| JUN 15, 2019 | NYL @ LAS | W | 26 | 2-6 | 0-0 | 1-2 | 0 | 3 | 3 | 12 | 4 | 1 | 3 | 1 | 5 |
| JUN 14, 2019 | NYL @ LVA | L | 22 | 2-6 | 0-2 | 2-2 | 0 | 1 | 1 | 5 | 0 | 0 | 4 | 2 | 6 |
| JUN 12, 2019 | NYL vs. MIN | W | 22 | 1-5 | 0-1 | 0-0 | 0 | 4 | 4 | 7 | 3 | 0 | 2 | 1 | 2 |
| JUN 09, 2019 | NYL vs. LVA | W | 17 | 3-5 | 1-2 | 1-1 | 0 | 4 | 4 | 3 | 0 | 0 | 4 | 2 | 8 |
| JUN 07, 2019 | NYL vs. WAS | L | 22 | 2-3 | 0-1 | 0-0 | 1 | 1 | 2 | 5 | 2 | 0 | 6 | 3 | 4 |
| JUN 04, 2019 | NYL vs. LAS | L | 29 | 3-8 | 0-1 | 2-2 | 1 | 1 | 2 | 6 | 4 | 1 | 2 | 2 | 8 |
| JUN 01, 2019 | NYL @ IND | L | 20 | 0-3 | 0-1 | 0-0 | 1 | 2 | 3 | 6 | 3 | 0 | 0 | 4 | 0 |
| MAY 24, 2019 | NYL vs. IND | L | 15 | 2-5 | 0-0 | 1-1 | 0 | 4 | 4 | 1 | 0 | 0 | 1 | 1 | 5 |

CAREER REGULAR SEASON HIGHS

Per Game Highs

| | Season |
|-----------------------|------------------------------|
| Points | 15 (Atlanta - 6/30/2019) |
| Rebounds | 9 (Minnesota - 8/13/2019) |
| Defensive Rebounds | 7 (Dallas - 6/28/2019) |
| Offensive Rebounds | 3 (Minnesota - 8/13/2019) |
| Assists | 12 (Los Angeles - 6/15/2019) |
| Blocks | (4 Times) |
| Steals | 4 (3 Times) |
| Field Goals Made | 6 (2 Times) |
| Field Goals Attempted | 14 (Chicago - 6/19/2019) |
| 3PT FGs Made | (4 Times) |
| 3PT FGs Attempted | 2 (4 Times) |
| Minutes Played | 31 (2 Times) |

Career

| |
|------------------------------|
| 22 (Tulsa - 8/15/2015) |
| 9 (2 Times) |
| 8 (Atlanta - 8/12/2018) |
| 3 (3 Times) |
| 12 (Los Angeles - 6/15/2019) |
| 2 (Atlanta - 6/21/2015) |
| 4 (6 Times) |
| 7 (Phoenix - 9/3/2016) |
| 14 (Chicago - 6/19/2019) |
| 2 (3 Times) |
| 5 (Tulsa - 8/15/2015) |
| 35 (Dallas - 9/11/2016) |



FORWARD/CENTER

#31 TINA CHARLES

TENTH SEASON | CONNECTICUT '10 | QUEENS, N.Y. | 6-4 | BORN DEC. 5, 1988

2019 Season: 17.3 PPG, 7.5 RPG, 2.1 APG

TINA'S 2019 GAME BY GAME STATS

| DATE | OPP | RESULT | MIN | FGM-A | 3PM-A | FTM-A | OREB | DREB | REB | AST | STL | BLK | TO | PF | PTS |
|--------------|-------------|--------|-----|---------|-------|---------|------|------|-----|-----|-----|-----|----|----|-----|
| AUG 16, 2019 | NYL @ DAL | L | 37 | 10 - 25 | 2 - 3 | 3 - 5 | 2 | 5 | 7 | 2 | 1 | 0 | 3 | 3 | 25 |
| AUG 13, 2019 | NYL vs. MIN | L | 32 | 2 - 9 | 1 - 2 | 2 - 4 | 2 | 5 | 7 | 1 | 0 | 2 | 2 | 3 | 7 |
| AUG 11, 2019 | NYL vs. SEA | L | 34 | 10 - 16 | 0 - 1 | 2 - 2 | 1 | 7 | 8 | 2 | 0 | 2 | 5 | 5 | 22 |
| AUG 07, 2019 | NYL @ CHI | L | 33 | 11 - 20 | 0 - 2 | 2 - 2 | 0 | 5 | 5 | 6 | 1 | 2 | 6 | 3 | 24 |
| AUG 04, 2019 | NYL vs. CON | L | 35 | 8 - 18 | 0 - 0 | 4 - 4 | 4 | 6 | 10 | 2 | 2 | 2 | 1 | 3 | 20 |
| AUG 01, 2019 | NYL @ DAL | L | 23 | 3 - 9 | 0 - 1 | 2 - 2 | 2 | 3 | 5 | 2 | 0 | 1 | 3 | 4 | 8 |
| JUL 24, 2019 | NYL @ CON | L | 29 | 4 - 12 | 0 - 3 | 5 - 8 | 3 | 8 | 11 | 4 | 0 | 3 | 3 | 0 | 13 |
| JUL 20, 2019 | NYL vs. LAS | W | 28 | 1 - 13 | 0 - 0 | 7 - 8 | 0 | 4 | 4 | 1 | 0 | 0 | 3 | 4 | 9 |
| JUL 14, 2019 | NYL @ SEA | L | 28 | 2 - 15 | 0 - 2 | 5 - 6 | 1 | 1 | 2 | 1 | 2 | 0 | 2 | 0 | 9 |
| JUL 12, 2019 | NYL @ CHI | L | 23 | 5 - 13 | 1 - 2 | 2 - 3 | 0 | 2 | 2 | 1 | 0 | 0 | 1 | 3 | 13 |
| JUL 07, 2019 | NYL vs. LVA | L | 27 | 5 - 16 | 1 - 4 | 2 - 2 | 3 | 5 | 8 | 1 | 0 | 0 | 4 | 3 | 13 |
| JUL 05, 2019 | NYL @ PHO | W | 37 | 10 - 22 | 0 - 2 | 3 - 4 | 0 | 12 | 12 | 4 | 1 | 1 | 4 | 4 | 23 |
| JUL 03, 2019 | NYL @ SEA | W | 33 | 11 - 22 | 1 - 2 | 3 - 4 | 0 | 5 | 5 | 4 | 1 | 1 | 3 | 5 | 26 |
| JUN 30, 2019 | NYL @ ATL | W | 36 | 10 - 24 | 0 - 1 | 4 - 6 | 2 | 6 | 8 | 1 | 4 | 3 | 2 | 4 | 24 |
| JUN 28, 2019 | NYL vs. DAL | W | 35 | 5 - 19 | 1 - 3 | 4 - 5 | 2 | 7 | 9 | 2 | 1 | 0 | 1 | 0 | 15 |
| JUN 22, 2019 | NYL @ MIN | L | 38 | 9 - 22 | 1 - 6 | 3 - 5 | 3 | 6 | 9 | 3 | 3 | 1 | 1 | 5 | 22 |
| JUN 19, 2019 | NYL vs. CHI | L | 37 | 7 - 21 | 2 - 4 | 0 - 0 | 1 | 6 | 7 | 3 | 0 | 0 | 1 | 2 | 16 |
| JUN 15, 2019 | NYL @ LAS | W | 34 | 4 - 17 | 0 - 0 | 1 - 2 | 3 | 10 | 13 | 0 | 1 | 0 | 1 | 3 | 9 |
| JUN 14, 2019 | NYL @ LVA | L | 18 | 3 - 10 | 0 - 0 | 0 - 0 | 0 | 0 | 0 | 0 | 1 | 0 | 2 | 1 | 6 |
| JUN 12, 2019 | NYL vs. MIN | W | 36 | 5 - 17 | 0 - 5 | 2 - 4 | 1 | 7 | 8 | 1 | 0 | 0 | 3 | 3 | 12 |
| JUN 09, 2019 | NYL vs. LVA | W | 34 | 8 - 18 | 0 - 2 | 5 - 6 | 2 | 6 | 8 | 4 | 0 | 0 | 2 | 2 | 21 |
| JUN 07, 2019 | NYL vs. WAS | L | 36 | 10 - 20 | 1 - 5 | 6 - 7 | 3 | 3 | 6 | 2 | 0 | 1 | 2 | 3 | 27 |
| JUN 04, 2019 | NYL vs. LAS | L | 34 | 8 - 24 | 0 - 2 | 5 - 5 | 3 | 11 | 14 | 1 | 0 | 1 | 3 | 4 | 21 |
| JUN 01, 2019 | NYL @ IND | L | 23 | 6 - 17 | 0 - 0 | 3 - 4 | 4 | 3 | 7 | 2 | 0 | 0 | 7 | 3 | 15 |
| MAY 24, 2019 | NYL vs. IND | L | 32 | 11 - 23 | 0 - 1 | 10 - 10 | 4 | 8 | 12 | 2 | 1 | 0 | 4 | 2 | 32 |

CAREER REGULAR SEASON HIGHS

Per Game Highs

| | Season |
|-----------------------|-----------------------------|
| Points | 32 (Indiana - 5/24/2019) |
| Rebounds | 14 (Los Angeles - 6/4/2019) |
| Defensive Rebounds | 12 (Phoenix - 7/5/2019) |
| Offensive Rebounds | 4 (3 Times) |
| Assists | 6 (Chicago - 8/7/2019) |
| Blocks | 3 (2 Times) |
| Steals | 4 (Atlanta - 6/30/2019) |
| Field Goals Made | 11 (3 Times) |
| Field Goals Attempted | 24 (2 Times) |
| 3PT FGs Made | 2 (Chicago - 6/19/19) |
| 3PT FGs Attempted | 6 (Minnesota - 6/22/2019) |
| Minutes Played | 38 (Minnesota - 6/22/2019) |

Career

| |
|---------------------------|
| 36 (Dallas - 6/2/2017) |
| 23 (2 Times) |
| 17 (Atlanta - 7/7/2010) |
| 9 (Minnesota - 8/3/2010) |
| 10 (Atlanta - 6/22/2016) |
| 8 (Washington - 8/8/2010) |
| 7 (Atlanta - 5/24/2016) |
| 14 (3 Times) |
| 27 (Phoenix - 6/26/2016) |
| 3 (3 Times) |
| 6 (Minnesota - 6/22/2019) |
| 46 (Chicago - 6/23/2011) |



GUARD

#25 ASIA DURR

ROOKIE SEASON | LOUISVILLE | DOUGLASVILLE, GA. | 5-10 | BORN APRIL 5, 1997

2019 Season: 9.7 PPG, 1.6 RPG, 1.7 APG

ASIA'S 2019 GAME BY GAME STATS

| DATE | OPP | RESULT | MIN | FGM-A | 3PM-A | FTM-A | OREB | DREB | REB | AST | STL | BLK | TO | PF | PTS |
|--------------|-------------|--------|-----|---------|-------|-------|------|------|-----|-----|-----|-----|----|----|-----|
| AUG 07, 2019 | NYL @ CHI | L | 21 | 3 - 7 | 0 - 2 | 0 - 0 | 1 | 2 | 3 | 1 | 0 | 0 | 0 | 1 | 6 |
| AUG 04, 2019 | NYL vs. CON | L | 21 | 1 - 2 | 1 - 2 | 0 - 0 | 0 | 2 | 2 | 3 | 0 | 0 | 0 | 1 | 3 |
| AUG 01, 2019 | NYL @ DAL | L | 15 | 4 - 7 | 0 - 2 | 2 - 2 | 1 | 0 | 1 | 1 | 0 | 0 | 1 | 1 | 10 |
| JUL 24, 2019 | NYL @ CON | L | 8 | 0 - 1 | 0 - 0 | 0 - 0 | 0 | 1 | 1 | 1 | 0 | 0 | 0 | 0 | 0 |
| JUL 07, 2019 | NYL vs. LVA | L | 27 | 3 - 8 | 2 - 5 | 0 - 0 | 0 | 2 | 2 | 4 | 0 | 3 | 0 | 2 | 8 |
| JUL 05, 2019 | NYL @ PHO | W | 27 | 5 - 11 | 0 - 2 | 0 - 0 | 0 | 2 | 2 | 2 | 0 | 0 | 0 | 1 | 10 |
| JUL 03, 2019 | NYL @ SEA | W | 20 | 2 - 5 | 0 - 3 | 1 - 2 | 0 | 4 | 4 | 0 | 0 | 0 | 3 | 1 | 5 |
| JUN 30, 2019 | NYL @ ATL | W | 32 | 5 - 8 | 0 - 1 | 1 - 2 | 1 | 1 | 2 | 4 | 1 | 0 | 3 | 2 | 11 |
| JUN 28, 2019 | NYL vs. DAL | W | 36 | 6 - 10 | 2 - 4 | 0 - 0 | 0 | 2 | 2 | 0 | 0 | 0 | 2 | 1 | 14 |
| JUN 22, 2019 | NYL @ MIN | L | 33 | 4 - 8 | 2 - 4 | 0 - 0 | 0 | 0 | 0 | 3 | 0 | 0 | 2 | 3 | 10 |
| JUN 19, 2019 | NYL vs. CHI | L | 31 | 6 - 12 | 3 - 3 | 4 - 4 | 1 | 1 | 2 | 3 | 0 | 0 | 1 | 2 | 19 |
| JUN 15, 2019 | NYL @ LAS | W | 31 | 5 - 10 | 1 - 3 | 0 - 0 | 0 | 0 | 0 | 1 | 0 | 1 | 0 | 2 | 11 |
| JUN 14, 2019 | NYL @ LVA | L | 31 | 2 - 10 | 1 - 4 | 3 - 4 | 0 | 0 | 0 | 1 | 2 | 0 | 1 | 4 | 8 |
| JUN 12, 2019 | NYL vs. MIN | W | 34 | 10 - 16 | 0 - 4 | 0 - 0 | 0 | 2 | 2 | 2 | 2 | 0 | 5 | 3 | 20 |
| JUN 07, 2019 | NYL vs. WAS | L | 30 | 5 - 9 | 1 - 4 | 0 - 0 | 0 | 2 | 2 | 1 | 4 | 0 | 0 | 4 | 11 |
| JUN 04, 2019 | NYL vs. LAS | L | 31 | 3 - 8 | 1 - 3 | 2 - 2 | 0 | 2 | 2 | 1 | 1 | 0 | 1 | 0 | 9 |
| JUN 01, 2019 | NYL @ IND | L | 27 | 4 - 12 | 1 - 3 | 3 - 3 | 1 | 0 | 1 | 1 | 0 | 2 | 1 | 2 | 12 |
| MAY 24, 2019 | NYL vs. IND | L | 25 | 3 - 8 | 0 - 2 | 2 - 3 | 0 | 1 | 1 | 2 | 0 | 1 | 1 | 4 | 8 |

CAREER REGULAR SEASON HIGHS

Per Game Highs

| | Season |
|--------------------|----------------------------|
| Points | 20 (Minnesota - 6/12/2019) |
| Rebounds | 4 (Seattle - 7/3/2019) |
| Defensive Rebounds | 4 (Seattle - 7/3/2019) |
| Offensive Rebounds | (5 Times) |
| Assists | 4 (2 Times) |
| Blocks | 3 (Las Vegas - 7/7/2019) |
| Steals | 4 (Washington - 6/7/2019) |
| FGs Made | 10 (Minnesota - 6/12/2019) |
| FGs Attempted | 16 (Minnesota - 6/12/2019) |
| 3 PT FGs Made | 3 (Chicago - 6/19/2019) |
| 3 PT FGs Attempted | 5 (Las Vegas - 7/7/2019) |
| Minutes Played | 36 (Dallas - 6/28/2019) |

Career

| | Career |
|--------------------|----------------------------|
| Points | 20 (Minnesota - 6/12/2019) |
| Rebounds | 4 (Seattle - 7/3/2019) |
| Defensive Rebounds | 4 (Seattle - 7/3/2019) |
| Offensive Rebounds | (5 Times) |
| Assists | 4 (2 Times) |
| Blocks | 3 (Las Vegas - 7/7/2019) |
| Steals | 4 (Washington - 6/7/2019) |
| FGs Made | 10 (Minnesota - 6/12/2019) |
| FGs Attempted | 16 (Minnesota - 6/12/2019) |
| 3 PT FGs Made | 3 (Chicago - 6/19/2019) |
| 3 PT FGs Attempted | 5 (Las Vegas - 7/7/2019) |
| Minutes Played | 36 (Dallas - 6/28/2019) |



FORWARD

#12 RESHANDA GRAY

THIRD SEASON | CALIFORNIA '15 | LOS ANGELES, CA | 6-2 | BORN JUNE 1, 1993

2019 Season: 5.6 PPG, 6.0 RPG, 0.6 APG

RESHANDA'S 2019 GAME BY GAME STATS

| DATE | OPP | RESULT | MIN | FGM-A | 3PM-A | FTM-A | OREB | DREB | REB | AST | STL | BLK | TO | PF | PTS |
|--------------|-------------|--------|-----|--------|-------|-------|------|------|-----|-----|-----|-----|----|----|-----|
| AUG 16, 2019 | NYL @ DAL | L | 14 | 2 - 2 | 0 - 0 | 0 - 0 | 1 | 3 | 4 | 0 | 0 | 0 | 1 | 3 | 4 |
| AUG 13, 2019 | NYL vs. MIN | L | 15 | 2 - 2 | 0 - 0 | 1 - 2 | 0 | 6 | 6 | 0 | 0 | 0 | 1 | 5 | 5 |
| AUG 11, 2019 | NYL vs. SEA | L | 14 | 2 - 4 | 0 - 0 | 4 - 6 | 3 | 1 | 4 | 0 | 0 | 0 | 2 | 4 | 8 |
| AUG 07, 2019 | NYL @ CHI | L | 12 | 0 - 1 | 0 - 0 | 0 - 0 | 1 | 2 | 3 | 0 | 0 | 1 | 1 | 5 | 0 |
| AUG 04, 2019 | NYL vs. CON | L | 15 | 3 - 6 | 0 - 0 | 2 - 2 | 2 | 4 | 6 | 0 | 0 | 1 | 3 | 3 | 8 |
| AUG 01, 2019 | NYL @ DAL | L | 10 | 0 - 0 | 0 - 0 | 0 - 0 | 0 | 1 | 1 | 0 | 0 | 0 | 0 | 4 | 0 |
| JUL 24, 2019 | NYL @ CON | L | 16 | 2 - 6 | 0 - 0 | 2 - 2 | 2 | 3 | 5 | 0 | 0 | 1 | 2 | 4 | 6 |
| JUL 20, 2019 | NYL vs. LAS | W | 23 | 4 - 7 | 0 - 0 | 2 - 6 | 2 | 6 | 8 | 0 | 3 | 1 | 1 | 4 | 10 |
| JUL 14, 2019 | NYL @ SEA | L | 9 | 1 - 2 | 0 - 0 | 2 - 2 | 1 | 1 | 2 | 0 | 0 | 0 | 1 | 3 | 4 |
| JUL 12, 2019 | NYL @ CHI | L | 18 | 1 - 2 | 0 - 0 | 2 - 2 | 1 | 5 | 6 | 1 | 0 | 0 | 2 | 3 | 4 |
| JUL 07, 2019 | NYL vs. LVA | L | 12 | 3 - 5 | 0 - 0 | 0 - 0 | 1 | 2 | 3 | 1 | 0 | 0 | 0 | 4 | 6 |
| JUL 05, 2019 | NYL @ PHO | W | 20 | 1 - 4 | 0 - 0 | 1 - 2 | 2 | 8 | 10 | 2 | 1 | 0 | 2 | 5 | 3 |
| JUL 03, 2019 | NYL @ SEA | W | 27 | 2 - 5 | 0 - 0 | 0 - 0 | 3 | 5 | 8 | 0 | 3 | 0 | 1 | 5 | 4 |
| JUN 30, 2019 | NYL @ ATL | W | 27 | 3 - 8 | 0 - 0 | 2 - 2 | 5 | 10 | 15 | 1 | 2 | 0 | 1 | 5 | 8 |
| JUN 28, 2019 | NYL vs. DAL | W | 31 | 6 - 11 | 0 - 0 | 1 - 4 | 4 | 7 | 11 | 1 | 0 | 1 | 2 | 5 | 13 |
| JUN 22, 2019 | NYL @ MIN | L | 21 | 5 - 6 | 1 - 1 | 0 - 0 | 2 | 4 | 6 | 2 | 0 | 1 | 1 | 3 | 11 |
| JUN 19, 2019 | NYL vs. CHI | L | 15 | 1 - 2 | 0 - 0 | 0 - 1 | 2 | 2 | 4 | 1 | 0 | 0 | 1 | 0 | 2 |
| JUN 15, 2019 | NYL @ LAS | W | 11 | 1 - 1 | 0 - 0 | 0 - 0 | 1 | 2 | 3 | 1 | 0 | 1 | 0 | 3 | 2 |
| JUN 14, 2019 | NYL @ LVA | L | 18 | 2 - 4 | 0 - 0 | 2 - 2 | 1 | 4 | 5 | 1 | 2 | 0 | 1 | 5 | 6 |
| JUN 12, 2019 | NYL vs. MIN | W | 12 | 0 - 1 | 0 - 0 | 0 - 0 | 2 | 3 | 5 | 1 | 0 | 0 | 1 | 1 | 0 |
| JUN 09, 2019 | NYL vs. LVA | W | 16 | 2 - 7 | 0 - 0 | 0 - 0 | 3 | 5 | 8 | 0 | 2 | 0 | 0 | 3 | 4 |
| JUN 07, 2019 | NYL vs. WAS | L | 20 | 0 - 4 | 0 - 0 | 0 - 0 | 2 | 4 | 6 | 0 | 0 | 0 | 1 | 4 | 0 |
| JUN 04, 2019 | NYL vs. LAS | L | 15 | 4 - 6 | 0 - 0 | 4 - 7 | 3 | 2 | 5 | 2 | 1 | 0 | 0 | 2 | 12 |
| JUN 01, 2019 | NYL @ IND | L | 21 | 5 - 9 | 0 - 0 | 1 - 3 | 4 | 5 | 9 | 1 | 2 | 0 | 1 | 3 | 11 |
| MAY 24, 2019 | NYL vs. IND | L | 14 | 5 - 7 | 0 - 0 | 0 - 2 | 6 | 2 | 8 | 0 | 0 | 0 | 0 | 3 | 10 |

CAREER REGULAR SEASON HIGHS

Per Game Highs

Points
Rebounds
Defensive Rebounds
Offensive Rebounds
Assists
Blocks
Steals
Field Goals Made
Field Goals Attempted
3PT FGs Made
3PT FGs Attempted
Minutes Played

Season

13 (Dallas - 6/28/2019)
15 (Atlanta - 6/30/2019)
10 (Atlanta - 6/30/2019)
6 (Indiana - 5/24/2019)
2 (3 Times)
(7 Times)
3 (2 Times)
6 (Dallas - 6/28/2019)
11 (Dallas - 6/28/2019)
(Minnesota - 6/22/2019)
(Minnesota - 6/22/2019)
31 (Dallas - 6/28/2019)

Career

22 (Dallas - 7/22/2016)
15 (Atlanta - 6/30/2019)
10 (Atlanta - 6/30/2019)
6 (Indiana - 5/24/2019)
2 (3 Times)
2 (2 Times)
3 (2 Times)
9 (Dallas - 7/22/2016)
12 (Dallas - 7/22/2016)
(Minnesota - 6/22/2019)
(Minnesota - 9/17/2016)
31 (Dallas - 6/28/2019)



GUARD

#14 BRIA HARTLEY

SIXTH SEASON | CONNECTICUT '14 | NORTH BABYLON, N.Y. | 5-8 | BORN SEPTEMBER 30, 1992

2019 Season: 9.3 PPG, 3.3 RPG, 3.5 APG

BRIA'S 2019 GAME BY GAME STATS

| DATE | OPP | RESULT | MIN | FGM-A | 3PM-A | FTM-A | OREB | DREB | REB | AST | STL | BLK | TO | PF | PTS |
|--------------|-------------|--------|-----|--------|-------|-------|------|------|-----|-----|-----|-----|----|----|-----|
| AUG 16, 2019 | NYL @ DAL | L | 25 | 3 - 8 | 1 - 3 | 5 - 6 | 0 | 1 | 1 | 2 | 0 | 0 | 2 | 4 | 12 |
| AUG 13, 2019 | NYL vs. MIN | L | 24 | 4 - 12 | 0 - 2 | 2 - 4 | 0 | 1 | 1 | 1 | 0 | 0 | 4 | 4 | 10 |
| AUG 11, 2019 | NYL vs. SEA | L | 33 | 5 - 11 | 4 - 8 | 3 - 4 | 2 | 4 | 6 | 4 | 1 | 0 | 3 | 3 | 17 |
| AUG 07, 2019 | NYL @ CHI | L | 19 | 3 - 11 | 0 - 4 | 0 - 0 | 0 | 2 | 2 | 7 | 1 | 0 | 1 | 3 | 6 |
| AUG 04, 2019 | NYL vs. CON | L | 13 | 3 - 5 | 1 - 1 | 2 - 2 | 1 | 2 | 3 | 2 | 2 | 0 | 0 | 3 | 9 |
| AUG 01, 2019 | NYL @ DAL | L | 16 | 2 - 3 | 0 - 0 | 1 - 2 | 0 | 2 | 2 | 0 | 0 | 0 | 3 | 2 | 5 |
| JUL 24, 2019 | NYL @ CON | L | 26 | 4 - 8 | 2 - 4 | 2 - 4 | 1 | 2 | 3 | 3 | 0 | 0 | 1 | 5 | 12 |
| JUL 20, 2019 | NYL vs. LAS | W | 18 | 1 - 3 | 0 - 0 | 1 - 2 | 0 | 0 | 0 | 2 | 1 | 0 | 2 | 0 | 3 |
| JUL 14, 2019 | NYL @ SEA | L | 28 | 2 - 6 | 0 - 1 | 3 - 4 | 0 | 4 | 4 | 5 | 2 | 0 | 1 | 2 | 7 |
| JUL 12, 2019 | NYL @ CHI | L | 29 | 2 - 9 | 1 - 2 | 8 - 8 | 1 | 2 | 3 | 5 | 1 | 0 | 4 | 1 | 13 |
| JUN 09, 2019 | NYL vs. LVA | W | 31 | 5 - 15 | 1 - 6 | 6 - 7 | 1 | 5 | 6 | 6 | 1 | 0 | 0 | 2 | 17 |
| JUN 07, 2019 | NYL vs. WAS | L | 20 | 4 - 10 | 2 - 6 | 4 - 4 | 1 | 5 | 6 | 5 | 1 | 0 | 1 | 1 | 14 |
| JUN 04, 2019 | NYL vs. LAS | L | 21 | 2 - 5 | 0 - 0 | 0 - 0 | 0 | 3 | 3 | 3 | 1 | 0 | 4 | 1 | 4 |
| JUN 01, 2019 | NYL @ IND | L | 20 | 0 - 6 | 0 - 2 | 3 - 4 | 4 | 2 | 6 | 3 | 3 | 0 | 4 | 2 | 3 |
| MAY 24, 2019 | NYL vs. IND | L | 17 | 2 - 9 | 1 - 2 | 2 - 3 | 2 | 2 | 4 | 4 | 0 | 0 | 0 | 1 | 7 |

CAREER REGULAR SEASON HIGHS

Per Game Highs

Points
Rebounds
Defensive Rebounds
Offensive Rebounds
Assists
Blocks
Steals
Field Goals Made
Field Goals Attempted
3PT FGs Made
3PT FGs Attempted
Minutes Played

Season

17 (2 Times)
6 (4 Times)
5 (2 Times)
4 (Indiana - 6/1/2019)
7 (Chicago - 8/7/2019)
-
3 (Indiana - 6/1/2019)
5 (2 Times)
15 (Las Vegas - 6/9/2019)
4 (Seattle - 8/11/2019)
8 (Seattle - 8/11/2019)
33 (Seattle - 8/11/2019)

Career

26 (Seattle - 6/22/2014)
6 (8 Times)
6 (Los Angeles - 8/14/2018)
4 (Indiana - 6/1/2019)
7 (3 Times)
2 (Dallas - 6/2/2017)
4 (Atlanta - 6/18/2014)
11 (Seattle - 6/22/2014)
16 (Seattle - 6/22/2014)
4 (5 Times)
8 (3 Times)
39 (2 Times)



GUARD

#23 MARINE JOHANNÈS

ROOKIE SEASON | FRANCE | 5-8 | BORN JANUARY 21, 1995

2019 Season: 6.2 PPG, 1.6 RPG, 1.5 APG

MARINE'S 2019 GAME BY GAME STATS

| DATE | OPP | RESULT | MIN | FGM-A | 3PM-A | FTM-A | OREB | DREB | REB | AST | STL | BLK | TO | PF | PTS |
|--------------|-------------|--------|-----|-------|-------|-------|------|------|-----|-----|-----|-----|----|----|-----|
| AUG 16, 2019 | NYL @ DAL | L | 16 | 2 - 6 | 1 - 4 | 0 - 0 | 2 | 1 | 3 | 2 | 0 | 0 | 0 | 0 | 5 |
| AUG 13, 2019 | NYL vs. MIN | L | 19 | 1 - 5 | 0 - 2 | 0 - 0 | 0 | 1 | 1 | 1 | 1 | 0 | 0 | 3 | 2 |
| AUG 11, 2019 | NYL vs. SEA | L | 8 | 0 - 3 | 0 - 3 | 0 - 0 | 0 | 0 | 0 | 0 | 0 | 0 | 0 | 0 | 0 |
| AUG 07, 2019 | NYL @ CHI | L | 15 | 6 - 6 | 4 - 4 | 0 - 0 | 0 | 1 | 1 | 2 | 0 | 1 | 1 | 3 | 16 |
| AUG 04, 2019 | NYL vs. CON | L | 18 | 0 - 6 | 0 - 4 | 2 - 2 | 0 | 1 | 1 | 4 | 0 | 0 | 1 | 2 | 2 |
| AUG 01, 2019 | NYL @ DAL | L | 14 | 0 - 2 | 0 - 2 | 0 - 0 | 0 | 2 | 2 | 1 | 0 | 0 | 2 | 1 | 0 |
| JUL 24, 2019 | NYL @ CON | L | 13 | 1 - 2 | 0 - 1 | 0 - 0 | 1 | 1 | 2 | 0 | 0 | 2 | 2 | 3 | 2 |
| JUL 20, 2019 | NYL vs. LAS | W | 22 | 6 - 6 | 4 - 4 | 1 - 1 | 0 | 5 | 5 | 0 | 1 | 0 | 3 | 2 | 17 |
| JUL 14, 2019 | NYL @ SEA | L | 14 | 2 - 3 | 1 - 2 | 2 - 2 | 0 | 0 | 0 | 2 | 1 | 0 | 2 | 0 | 7 |
| JUL 12, 2019 | NYL @ CHI | L | 16 | 4 - 7 | 2 - 4 | 0 - 0 | 0 | 1 | 1 | 3 | 0 | 0 | 0 | 1 | 10 |

CAREER REGULAR SEASON HIGHS

Per Game Highs

| | Season |
|--------------------|------------------------------|
| Points | 17 (Los Angeles - 7/20/2019) |
| Rebounds | 5 (Los Angeles - 7/20/2019) |
| Defensive Rebounds | 5 (Los Angeles - 7/20/2019) |
| Offensive Rebounds | (Connecticut - 7/24/2019) |
| Assists | 4 (Connecticut - 8/4/2019) |
| Blocks | 2 (Connecticut - 7/24/2019) |
| Steals | (3 Times) |
| FGs Made | 6 (2 Times) |
| FGs Attempted | 7 (Chicago - 7/12/2019) |
| 3PT FGs Made | 4 (2 Times) |
| 3PT FGs Attempted | 4 (4 Times) |
| Minutes Played | 22 (Los Angeles - 7/20/2019) |

Career

| | |
|--------------------|------------------------------|
| Points | 17 (Los Angeles - 7/20/2019) |
| Rebounds | 5 (Los Angeles - 7/20/2019) |
| Defensive Rebounds | 5 (Los Angeles - 7/20/2019) |
| Offensive Rebounds | (Connecticut - 7/24/2019) |
| Assists | 4 (Connecticut - 8/4/2019) |
| Blocks | 2 (Connecticut - 7/24/2019) |
| Steals | (3 Times) |
| FGs Made | 6 (2 Times) |
| FGs Attempted | 7 (Chicago - 7/12/2019) |
| 3PT FGs Made | 4 (2 Times) |
| 3PT FGs Attempted | 4 (4 Times) |
| Minutes Played | 22 (Los Angeles - 7/20/2019) |



GUARD

#5 KIA NURSE

SECOND SEASON | CONNECTICUT '18 | HAMILTON, CANADA | 6-0 | BORN FEBRUARY 22, 1996

2019 Season: 14.2 PPG, 2.5 RPG, 2.1 APG

KIA'S 2019 GAME BY GAME STATS

| DATE | OPP | RESULT | MIN | FGM-A | 3PM-A | FTM-A | OREB | DREB | REB | AST | STL | BLK | TO | PF | PTS |
|--------------|-------------|--------|-----|--------|--------|---------|------|------|-----|-----|-----|-----|----|----|-----|
| AUG 16, 2019 | NYL @ DAL | L | 33 | 4 - 9 | 0 - 4 | 9 - 11 | 3 | 1 | 4 | 3 | 0 | 0 | 2 | 3 | 17 |
| AUG 13, 2019 | NYL vs. MIN | L | 33 | 5 - 15 | 1 - 3 | 0 - 1 | 1 | 1 | 2 | 3 | 1 | 0 | 2 | 2 | 11 |
| AUG 11, 2019 | NYL vs. SEA | L | 27 | 1 - 8 | 1 - 6 | 0 - 0 | 0 | 1 | 1 | 1 | 0 | 0 | 1 | 3 | 3 |
| AUG 07, 2019 | NYL @ CHI | L | 23 | 2 - 7 | 0 - 2 | 2 - 4 | 1 | 5 | 6 | 2 | 0 | 0 | 2 | 1 | 6 |
| AUG 04, 2019 | NYL vs. CON | L | 26 | 4 - 12 | 1 - 6 | 2 - 2 | 0 | 1 | 1 | 1 | 0 | 0 | 5 | 0 | 11 |
| AUG 01, 2019 | NYL @ DAL | L | 22 | 3 - 10 | 2 - 4 | 5 - 6 | 0 | 1 | 1 | 3 | 2 | 0 | 1 | 1 | 13 |
| JUL 24, 2019 | NYL @ CON | L | 18 | 0 - 8 | 0 - 4 | 2 - 2 | 0 | 0 | 0 | 2 | 1 | 0 | 1 | 0 | 2 |
| JUL 20, 2019 | NYL vs. LAS | W | 29 | 2 - 3 | 1 - 2 | 9 - 12 | 0 | 2 | 2 | 3 | 0 | 0 | 1 | 2 | 14 |
| JUL 14, 2019 | NYL @ SEA | L | 30 | 5 - 10 | 3 - 7 | 6 - 7 | 0 | 0 | 0 | 0 | 1 | 0 | 2 | 1 | 19 |
| JUL 12, 2019 | NYL @ CHI | L | 28 | 6 - 13 | 1 - 2 | 5 - 5 | 3 | 2 | 5 | 3 | 0 | 0 | 1 | 2 | 18 |
| JUL 07, 2019 | NYL vs. LVA | L | 30 | 1 - 13 | 0 - 5 | 4 - 4 | 0 | 2 | 2 | 2 | 0 | 0 | 2 | 2 | 6 |
| JUL 05, 2019 | NYL @ PHO | W | 37 | 8 - 11 | 4 - 6 | 6 - 6 | 0 | 5 | 5 | 1 | 0 | 2 | 1 | 2 | 26 |
| JUL 03, 2019 | NYL @ SEA | W | 37 | 9 - 12 | 4 - 7 | 2 - 2 | 0 | 2 | 2 | 1 | 2 | 1 | 3 | 2 | 24 |
| JUN 30, 2019 | NYL @ ATL | W | 31 | 2 - 12 | 0 - 6 | 2 - 2 | 0 | 2 | 2 | 1 | 1 | 0 | 2 | 2 | 6 |
| JUN 28, 2019 | NYL vs. DAL | W | 38 | 6 - 14 | 1 - 4 | 4 - 4 | 3 | 3 | 6 | 4 | 2 | 0 | 2 | 1 | 17 |
| JUN 22, 2019 | NYL @ MIN | L | 40 | 9 - 19 | 5 - 11 | 1 - 1 | 1 | 0 | 1 | 0 | 2 | 1 | 4 | 3 | 24 |
| JUN 19, 2019 | NYL vs. CHI | L | 35 | 5 - 16 | 2 - 7 | 2 - 2 | 1 | 0 | 1 | 3 | 2 | 0 | 0 | 1 | 14 |
| JUN 15, 2019 | NYL @ LAS | W | 34 | 5 - 12 | 1 - 6 | 15 - 16 | 1 | 6 | 7 | 3 | 4 | 0 | 1 | 1 | 26 |
| JUN 14, 2019 | NYL @ LVA | L | 26 | 3 - 13 | 1 - 8 | 5 - 6 | 1 | 3 | 4 | 1 | 0 | 0 | 2 | 0 | 12 |
| JUN 12, 2019 | NYL vs. MIN | W | 40 | 9 - 15 | 4 - 9 | 4 - 5 | 1 | 2 | 3 | 4 | 2 | 0 | 4 | 1 | 26 |
| JUN 09, 2019 | NYL vs. LVA | W | 31 | 4 - 11 | 3 - 8 | 4 - 5 | 0 | 3 | 3 | 2 | 0 | 0 | 0 | 1 | 15 |
| JUN 07, 2019 | NYL vs. WAS | L | 26 | 4 - 8 | 2 - 2 | 0 - 0 | 1 | 0 | 1 | 3 | 0 | 0 | 2 | 4 | 10 |
| JUN 04, 2019 | NYL vs. LAS | L | 30 | 3 - 8 | 2 - 5 | 0 - 0 | 0 | 2 | 2 | 2 | 0 | 0 | 2 | 4 | 8 |
| JUN 01, 2019 | NYL @ IND | L | 26 | 4 - 8 | 3 - 7 | 3 - 4 | 0 | 1 | 1 | 4 | 0 | 0 | 1 | 3 | 14 |
| MAY 24, 2019 | NYL vs. IND | L | 32 | 3 - 10 | 2 - 4 | 4 - 4 | 0 | 1 | 1 | 0 | 1 | 0 | 1 | 0 | 12 |

CAREER REGULAR SEASON HIGHS

Per Game Highs

Points
Rebounds
Defensive Rebounds
Offensive Rebounds
Assists
Blocks
Steals
Field Goals Made
Field Goals Attempted
3PT FGs Made
3PT FGs Attempted
Minutes Played

Season

26 (3 Times)
7 (Los Angeles - 6/15/19)
6 (Los Angeles - 6/15/19)
3 (2 Times)
4 (3 Times)
2 (Phoenix - 7/5/2019)
4 (Los Angeles - 6/15/19)
9 (3 Times)
19 (Minnesota) - 6/22/2019
5 (Minnesota - 6/22/2019)
11 (Minnesota - 6/22/2019)
40 (2 Times)

Career

34 (Indiana - 6/2/2018)
9 (Indiana - 6/2/2018)
6 (2 Times)
3 (5Times)
4 (6 Times)
2 (Phoenix - 7/5/2019)
4 (Los Angeles - 6/15/19)
9 (3 Times)
16 (3 Times)
5 (Minnesota - 6/22/2019)
11 (Minnesota - 6/22/2019)
40 (4 Times)



FORWARD/CENTER

#4 NAYO RAINCOCK-EKUNWE

SECOND SEASON | SIMON FRASIER (CANADA) | TORONTO, CANADA | 6-3 | BORN AUGUST 29, 1991

2019 SEASON: 3.3 PPG, 2.5 RPG, APG 0.4

NAYO'S 2019 GAME BY GAME STATS

| DATE | OPP | RESULT | MIN | FGM-A | 3PM-A | FTM-A | OREB | DREB | REB | AST | STL | BLK | TO | PF | PTS |
|--------------|-------------|--------|-----|-------|-------|-------|------|------|-----|-----|-----|-----|----|----|-----|
| AUG 16, 2019 | NYL @ DAL | L | 22 | 2-3 | 0-0 | 0-0 | 2 | 0 | 2 | 0 | 0 | 0 | 1 | 4 | 4 |
| AUG 13, 2019 | NYL vs. MIN | L | 4 | 1-1 | 0-0 | 0-0 | 0 | 0 | 0 | 0 | 0 | 0 | 0 | 1 | 2 |
| AUG 11, 2019 | NYL vs. SEA | L | 20 | 2-4 | 0-1 | 0-0 | 2 | 2 | 4 | 1 | 2 | 0 | 1 | 3 | 4 |
| AUG 07, 2019 | NYL @ CHI | L | 17 | 2-4 | 0-0 | 0-0 | 0 | 3 | 3 | 1 | 1 | 0 | 2 | 3 | 4 |
| AUG 04, 2019 | NYL vs. CON | L | 7 | 2-2 | 0-0 | 0-0 | 0 | 0 | 0 | 0 | 0 | 0 | 0 | 0 | 4 |
| AUG 01, 2019 | NYL @ DAL | L | 24 | 1-3 | 0-0 | 2-4 | 1 | 2 | 3 | 1 | 1 | 0 | 1 | 1 | 4 |
| JUL 24, 2019 | NYL @ CON | L | 11 | 1-2 | 0-0 | 0-0 | 1 | 0 | 1 | 1 | 0 | 0 | 0 | 1 | 2 |
| JUL 20, 2019 | NYL vs. LAS | W | 12 | 3-3 | 1-1 | 1-2 | 1 | 0 | 1 | 0 | 0 | 0 | 0 | 2 | 8 |
| JUL 14, 2019 | NYL @ SEA | L | 9 | 2-2 | 0-0 | 1-1 | 1 | 1 | 2 | 0 | 0 | 0 | 1 | 0 | 5 |
| JUL 12, 2019 | NYL @ CHI | L | 7 | 3-5 | 0-0 | 0-1 | 2 | 1 | 3 | 0 | 0 | 0 | 1 | 0 | 6 |
| JUL 07, 2019 | NYL vs. LVA | L | 19 | 1-5 | 0-0 | 0-0 | 4 | 2 | 6 | 0 | 1 | 0 | 2 | 3 | 2 |
| JUL 05, 2019 | NYL @ PHO | W | 8 | 0-2 | 0-0 | 0-0 | 0 | 1 | 1 | 0 | 0 | 0 | 0 | 1 | 0 |
| JUL 03, 2019 | NYL @ SEA | W | 12 | 3-3 | 0-0 | 2-3 | 3 | 2 | 5 | 1 | 0 | 0 | 2 | 1 | 8 |
| JUN 30, 2019 | NYL @ ATL | W | 16 | 3-5 | 0-0 | 0-0 | 0 | 3 | 3 | 1 | 0 | 1 | 1 | 3 | 6 |
| JUN 28, 2019 | NYL vs. DAL | W | 6 | 1-2 | 0-0 | 0-0 | 2 | 0 | 2 | 1 | 0 | 1 | 0 | 1 | 2 |
| JUN 22, 2019 | NYL @ MIN | L | 19 | 0-1 | 0-0 | 0-0 | 3 | 2 | 5 | 0 | 0 | 0 | 2 | 2 | 0 |
| JUN 14, 2019 | NYL @ LVA | L | 20 | 1-4 | 0-1 | 0-0 | 0 | 2 | 2 | 1 | 1 | 0 | 1 | 2 | 2 |
| JUN 01, 2019 | NYL @ IND | L | 6 | 0-0 | 0-0 | 0-0 | 2 | 1 | 3 | 0 | 0 | 0 | 0 | 1 | 0 |
| MAY 24, 2019 | NYL vs. IND | L | 4 | 0-1 | 0-0 | 0-0 | 0 | 1 | 1 | 0 | 0 | 0 | 0 | 0 | 0 |

CAREER REGULAR SEASON HIGHS

Per Game Highs

| | Season |
|-----------------------|---------------------------|
| Points | 8 (2 Times) |
| Rebounds | 6 (Las Vegas - 7/7/2019) |
| Defensive Rebounds | 3 (2 Times) |
| Offensive Rebounds | 4 (Las Vegas - 7/7/2019) |
| Assists | (8 Times) |
| Blocks | (2 Times) |
| Steals | 2 (Seattle - 8/11/2019) |
| Field Goals Made | 3 (4 Times) |
| Field Goals Attempted | 5 (3 Times) |
| 3PT FGs Made | (Los Angeles - 7/20/2019) |
| 3PT FGs Attempted | (3 Times) |
| Minutes Played | 24 (Dallas - 8/1/2019) |

Career

| |
|------------------------------|
| 12 (Connecticut - 8/18/2017) |
| 6 (3 Times) |
| 3 (6 Times) |
| 4 (3 Times) |
| 2 (2 Times) |
| (3 Times) |
| 2 (2 Times) |
| 4 (Connecticut - 6/14/2017) |
| 9 (Connecticut - 6/14/2017) |
| (Los Angeles - 7/20/2019) |
| (7 Times) |
| 24 (Dallas - 8/1/2019) |



GUARD

#30 TANISHA WRIGHT

14TH SEASON | PENN STATE '05 | BROOKLYN, N.Y. | 5-11 | BORN NOVEMBER 29, 1983

2019 Season: 4.2 PPG, 2.9 RPG, 4.2 APG

TANISHA'S 2019 GAME BY GAME STATS

| DATE | OPP | RESULT | MIN | FGM-A | 3PM-A | FTM-A | OREB | DREB | REB | AST | STL | BLK | TO | PF | PTS |
|--------------|-------------|--------|-----|-------|-------|-------|------|------|-----|-----|-----|-----|----|----|-----|
| AUG 16, 2019 | NYL @ DAL | L | 30 | 2-5 | 0-0 | 2-2 | 4 | 5 | 9 | 7 | 2 | 0 | 4 | 4 | 6 |
| AUG 13, 2019 | NYL vs. MIN | L | 21 | 0-0 | 0-0 | 2-2 | 0 | 5 | 5 | 6 | 1 | 0 | 2 | 1 | 2 |
| AUG 11, 2019 | NYL vs. SEA | L | 23 | 1-4 | 1-2 | 0-0 | 2 | 2 | 4 | 7 | 1 | 0 | 2 | 0 | 3 |
| AUG 07, 2019 | NYL @ CHI | L | 24 | 2-2 | 1-1 | 0-0 | 1 | 1 | 2 | 7 | 0 | 0 | 2 | 4 | 5 |
| AUG 04, 2019 | NYL vs. CON | L | 13 | 0-2 | 0-1 | 0-0 | 0 | 1 | 1 | 2 | 0 | 0 | 1 | 3 | 0 |
| AUG 01, 2019 | NYL @ DAL | L | 19 | 0-5 | 0-1 | 0-0 | 0 | 1 | 1 | 4 | 1 | 0 | 3 | 3 | 0 |
| JUL 24, 2019 | NYL @ CON | L | 26 | 2-4 | 0-1 | 1-2 | 0 | 3 | 3 | 5 | 2 | 0 | 3 | 3 | 5 |
| JUL 20, 2019 | NYL vs. LAS | W | 22 | 2-5 | 1-2 | 2-2 | 0 | 3 | 3 | 5 | 0 | 0 | 1 | 1 | 7 |
| JUL 14, 2019 | NYL @ SEA | L | 19 | 1-2 | 0-0 | 4-4 | 2 | 0 | 2 | 4 | 3 | 0 | 4 | 2 | 6 |
| JUL 12, 2019 | NYL @ CHI | L | 15 | 1-3 | 0-1 | 0-0 | 0 | 3 | 3 | 3 | 1 | 1 | 2 | 2 | 2 |
| JUL 07, 2019 | NYL vs. LVA | L | 18 | 3-8 | 2-3 | 0-0 | 2 | 1 | 3 | 5 | 0 | 0 | 3 | 2 | 8 |
| JUL 05, 2019 | NYL @ PHO | W | 8 | 0-2 | 0-0 | 0-0 | 0 | 1 | 1 | 0 | 0 | 0 | 0 | 1 | 0 |
| JUL 03, 2019 | NYL @ SEA | W | 25 | 4-12 | 2-4 | 0-2 | 2 | 2 | 4 | 4 | 2 | 0 | 1 | 0 | 10 |
| JUN 30, 2019 | NYL @ ATL | W | 20 | 1-3 | 0-1 | 0-0 | 1 | 4 | 5 | 4 | 1 | 1 | 1 | 3 | 2 |
| JUN 22, 2019 | NYL @ MIN | L | 18 | 4-8 | 1-3 | 0-0 | 1 | 2 | 3 | 4 | 3 | 1 | 1 | 2 | 9 |
| JUN 19, 2019 | NYL vs. CHI | L | 20 | 1-5 | 0-1 | 0-1 | 0 | 3 | 3 | 3 | 0 | 1 | 2 | 3 | 2 |
| JUN 15, 2019 | NYL @ LAS | W | 16 | 3-6 | 0-2 | 0-0 | 0 | 1 | 1 | 3 | 1 | 0 | 2 | 1 | 6 |
| JUN 14, 2019 | NYL @ LVA | L | 10 | 0-0 | 0-0 | 4-4 | 0 | 2 | 2 | 2 | 0 | 0 | 1 | 1 | 4 |
| JUN 12, 2019 | NYL vs. MIN | W | 22 | 0-2 | 0-0 | 0-0 | 0 | 2 | 2 | 5 | 3 | 0 | 1 | 2 | 0 |
| JUN 09, 2019 | NYL vs. LVA | W | 18 | 4-6 | 0-1 | 0-0 | 1 | 3 | 4 | 4 | 1 | 1 | 3 | 1 | 8 |
| JUN 01, 2019 | NYL @ IND | L | 2 | 0-0 | 0-0 | 0-0 | 0 | 1 | 1 | 0 | 0 | 0 | 2 | 0 | 0 |
| MAY 24, 2019 | NYL vs. IND | L | 13 | 0-0 | 0-0 | 0-0 | 0 | 1 | 1 | 3 | 0 | 0 | 2 | 4 | 0 |

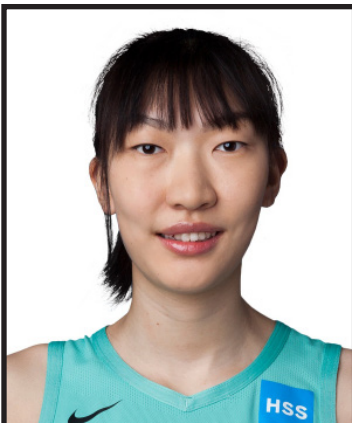
CAREER REGULAR SEASON HIGHS

Per Game Highs

| | Season |
|-----------------------|------------------------------|
| Points | 10 (Seattle - 7/3/2019) |
| Rebounds | 9 (Dallas - 8/16/2019) |
| Defensive Rebounds | 5 (Minnesota - 8/13/2019) |
| Offensive Rebounds | 4 (Dallas - 8/16/2019) |
| Assists | 7 (2 Times) |
| Blocks | (5 Times) |
| Steals | 3 (3 Times) |
| Field Goals Made | 4 (3 Times) |
| Field Goals Attempted | 12 (Seattle - 7/3/2019) |
| 3PT FGs Made | 2 (3 Times) |
| 3PT FGs Attempted | 4 (Seattle - 7/3/2019) |
| Minutes Played | 26 (Connecticut - 7/24/2019) |

Career

| |
|------------------------------|
| 25 (2 Times) |
| 9 (2 Times) |
| 7 (Phoenix - 5/22/2010) |
| 5 (Los Angeles - 6/26/2009) |
| 12 (San Antonio - 6/29/2010) |
| 3 (Sacramento - 7/9/2009) |
| 5 (2 Times) |
| 10 (Atlanta - 8/29/2009) |
| 22 (Phoenix - 9/10/2009) |
| 3 (2 Times) |
| 6 (San Antonio - 6/9/2012) |
| 46 (Phoenix - 7/14/2010) |



CENTER

#21 HAN XU

ROOKIE SEASON | CHINA | 6-9 | BORN OCTOBER 31, 1999

2019 Season: 2.8 PPG, 0.8 RPG, 0.2 APG

HAN'S 2019 GAME BY GAME STATS

| DATE | OPP | RESULT | MIN | FGM-A | 3PM-A | FTM-A | OREB | DREB | REB | AST | STL | BLK | TO | PF | PTS |
|--------------|-------------|--------|-----|-------|-------|-------|------|------|-----|-----|-----|-----|----|----|-----|
| AUG 13, 2019 | NYL vs. MIN | L | 3 | 1-1 | 0-0 | 0-0 | 0 | 0 | 0 | 0 | 0 | 0 | 0 | 0 | 2 |
| AUG 11, 2019 | NYL vs. SEA | L | 6 | 0-2 | 0-1 | 0-0 | 0 | 0 | 0 | 0 | 0 | 0 | 0 | 0 | 0 |
| AUG 01, 2019 | NYL @ DAL | L | 12 | 2-5 | 0-0 | 0-0 | 0 | 0 | 0 | 0 | 0 | 0 | 0 | 0 | 4 |
| JUL 14, 2019 | NYL @ SEA | L | 10 | 2-4 | 0-0 | 0-0 | 0 | 1 | 1 | 0 | 0 | 0 | 0 | 0 | 4 |
| JUL 12, 2019 | NYL @ CHI | L | 10 | 1-3 | 0-1 | 0-0 | 0 | 1 | 1 | 2 | 1 | 0 | 0 | 0 | 2 |
| JUL 07, 2019 | NYL vs. LVA | L | 13 | 3-6 | 1-2 | 0-0 | 1 | 2 | 3 | 0 | 0 | 1 | 0 | 0 | 7 |
| JUN 28, 2019 | NYL vs. DAL | W | 8 | 0-1 | 0-0 | 1-2 | 0 | 0 | 0 | 0 | 0 | 0 | 0 | 2 | 1 |
| JUN 22, 2019 | NYL @ MIN | L | 2 | 0-0 | 0-0 | 0-0 | 0 | 0 | 0 | 0 | 0 | 0 | 0 | 0 | 0 |
| JUN 14, 2019 | NYL @ LVA | L | 16 | 3-8 | 0-1 | 0-0 | 0 | 2 | 2 | 0 | 0 | 1 | 0 | 1 | 6 |
| JUN 07, 2019 | NYL vs. WAS | L | 1 | 0-0 | 0-0 | 0-0 | 0 | 1 | 1 | 0 | 0 | 0 | 0 | 0 | 0 |
| JUN 01, 2019 | NYL @ IND | L | 11 | 3-3 | 1-1 | 0-0 | 0 | 1 | 1 | 0 | 1 | 0 | 0 | 0 | 7 |

CAREER REGULAR SEASON HIGHS

Per Game Highs

| | Season |
|-----------------------|----------------------------|
| Points | 7 (2 Times) |
| Rebounds | 3 (Las Vegas - 7/7/2019) |
| Defensive Rebounds | 2 (2 Times) |
| Offensive Rebounds | (Las Vegas - 7/7/2019) |
| Assists | 2 (Chicago - 7/12/2019) |
| Blocks | (2 Times) |
| Steals | (2 Times) |
| Field Goals Made | 3 (3 Times) |
| Field Goals Attempted | 8 (Las Vegas - 6/14/2019) |
| 3PT FGs Made | (2 Times) |
| 3PT FGs Attempted | 2 (Las Vegas - 7/7/2019) |
| Minutes Played | 16 (Las Vegas - 6/14/2019) |

Career

| | |
|-----------------------|----------------------------|
| Points | 7 (2 Times) |
| Rebounds | 3 (Las Vegas - 7/7/2019) |
| Defensive Rebounds | 2 (2 Times) |
| Offensive Rebounds | (Las Vegas - 7/7/2019) |
| Assists | 2 (Chicago - 7/12/2019) |
| Blocks | (2 Times) |
| Steals | (2 Times) |
| Field Goals Made | 3 (3 Times) |
| Field Goals Attempted | 8 (Las Vegas - 6/14/2019) |
| 3PT FGs Made | (2 Times) |
| 3PT FGs Attempted | 2 (Las Vegas - 7/7/2019) |
| Minutes Played | 16 (Las Vegas - 6/14/2019) |



CENTER

#17 AMANDA ZAHUI B.

FIFTH SEASON | MINNESOTA '15 | 6-5 | BORN SEPTEMBER 8, 1993

2019 Season: 9.1 PPG, 6.8 RPG, 1.8 BPG

AMANDA'S 2019 GAME BY GAME STATS

| DATE | OPP | RESULT | MIN | FGM-A | 3PM-A | FTM-A | OREB | DREB | REB | AST | STL | BLK | TO | PF | PTS |
|--------------|-------------|--------|-----|---------|-------|-------|------|------|-----|-----|-----|-----|----|----|-----|
| AUG 07, 2019 | NYL @ CHI | L | 18 | 2 - 4 | 0 - 1 | 0 - 0 | 2 | 7 | 9 | 0 | 1 | 1 | 0 | 0 | 4 |
| AUG 04, 2019 | NYL vs. CON | L | 23 | 7 - 12 | 1 - 5 | 1 - 1 | 1 | 4 | 5 | 5 | 0 | 0 | 3 | 5 | 16 |
| AUG 01, 2019 | NYL @ DAL | L | 11 | 1 - 2 | 0 - 1 | 0 - 0 | 0 | 0 | 0 | 0 | 0 | 1 | 0 | 4 | 2 |
| JUL 24, 2019 | NYL @ CON | L | 24 | 1 - 6 | 1 - 4 | 2 - 2 | 1 | 8 | 9 | 0 | 0 | 1 | 1 | 3 | 5 |
| JUL 20, 2019 | NYL vs. LAS | W | 17 | 2 - 3 | 1 - 1 | 2 - 2 | 0 | 3 | 3 | 0 | 1 | 1 | 3 | 3 | 7 |
| JUL 14, 2019 | NYL @ SEA | L | 21 | 2 - 7 | 0 - 3 | 0 - 0 | 1 | 7 | 8 | 0 | 1 | 1 | 2 | 3 | 4 |
| JUL 12, 2019 | NYL @ CHI | L | 22 | 0 - 3 | 0 - 1 | 5 - 6 | 1 | 4 | 5 | 0 | 1 | 2 | 2 | 3 | 5 |
| JUN 19, 2019 | NYL vs. CHI | L | 28 | 5 - 10 | 2 - 4 | 1 - 1 | 0 | 10 | 10 | 2 | 1 | 2 | 0 | 5 | 13 |
| JUN 15, 2019 | NYL @ LAS | W | 35 | 13 - 16 | 7 - 8 | 4 - 4 | 1 | 6 | 7 | 1 | 1 | 3 | 2 | 1 | 37 |
| JUN 14, 2019 | NYL @ LVA | L | 22 | 3 - 6 | 0 - 2 | 0 - 0 | 1 | 3 | 4 | 0 | 2 | 1 | 0 | 4 | 6 |
| JUN 12, 2019 | NYL vs. MIN | W | 32 | 5 - 8 | 1 - 3 | 4 - 4 | 3 | 10 | 13 | 2 | 3 | 2 | 1 | 2 | 15 |
| JUN 09, 2019 | NYL vs. LVA | W | 30 | 4 - 11 | 1 - 5 | 0 - 0 | 3 | 6 | 9 | 1 | 2 | 5 | 0 | 4 | 9 |
| JUN 07, 2019 | NYL vs. WAS | L | 20 | 3 - 7 | 0 - 2 | 0 - 0 | 1 | 6 | 7 | 0 | 0 | 1 | 2 | 2 | 6 |
| JUN 04, 2019 | NYL vs. LAS | L | 31 | 2 - 6 | 1 - 3 | 1 - 2 | 2 | 10 | 12 | 0 | 0 | 6 | 4 | 4 | 6 |
| JUN 01, 2019 | NYL @ IND | L | 19 | 4 - 9 | 2 - 6 | 1 - 3 | 1 | 4 | 5 | 0 | 1 | 0 | 0 | 4 | 11 |
| MAY 24, 2019 | NYL vs. IND | L | 29 | 0 - 4 | 0 - 2 | 0 - 0 | 0 | 3 | 3 | 2 | 0 | 1 | 5 | 5 | 0 |

CAREER REGULAR SEASON HIGHS

Per Game Highs

| | |
|-----------------------|----------------------------|
| Points | 37 (Los Angeles - 6/15/19) |
| Rebounds | 13 (Minnesota - 6/12/2019) |
| Defensive Rebounds | 10 (3 Times) |
| Offensive Rebounds | 3 (2 Times) |
| Assists | 5 (Connecticut - 8/4/2019) |
| Blocks | 6 (Los Angeles - 6/4/2019) |
| Steals | 3 (Minnesota - 6/12/2019) |
| Field Goals Made | 13 (Los Angeles - 6/15/19) |
| Field Goals Attempted | 16 (Los Angeles - 6/15/19) |
| 3PT FGs Made | 7 (Los Angeles - 6/15/19) |
| 3PT FGs Attempted | 8 (Los Angeles - 6/15/19) |
| Minutes Played | 35 (Los Angeles - 6/15/19) |

Season

Career

| | |
|-----------------------|----------------------------|
| Points | 37 (Los Angeles - 6/15/19) |
| Rebounds | 13 (Minnesota - 6/12/2019) |
| Defensive Rebounds | 10 (3 Times) |
| Offensive Rebounds | 6 (2 Times) |
| Assists | 5 (Connecticut - 8/4/2019) |
| Blocks | 6 (Los Angeles - 6/4/2019) |
| Steals | 3 (Minnesota - 6/12/2019) |
| Field Goals Made | 13 (Los Angeles - 6/15/19) |
| Field Goals Attempted | 16 (Los Angeles - 6/15/19) |
| 3PT FGs Made | 7 (Los Angeles - 6/15/19) |
| 3PT FGs Attempted | 8 (Los Angeles - 6/15/19) |
| Minutes Played | 35 (Los Angeles - 6/15/19) |

SPOTTER'S CHART



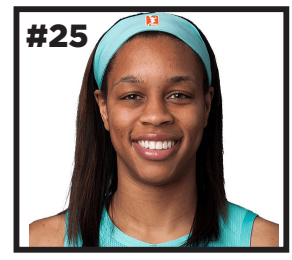
REBECCA ALLEN
FORWARD/GUARD
AUSTRALIA



BRITTANY BOYD
GUARD



TINA CHARLES
CENTER
UCONN



ASIA DURR
GUARD



RESHANDA GRAY
FORWARD
CALIFORNIA



BRIA HARTLEY
GUARD
UCONN



MARINE JOHANNÉS
GUARD
FRANCE



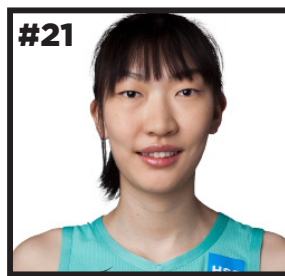
KIA NURSE
GUARD
UCONN



NAYO RAINCOCK-EKUNWE
FORWARD/CENTER
CANADA



TANISHA WRIGHT
GUARD
PENN STATE



HAN XU
CENTER
CHINA



AMANDA ZAHUI B
CENTER
MINNESOTA



KATIE SMITH
HEAD COACH
2ND SEASON



HERB WILLIAMS
ASSISTANT COACH
5TH SEASON



TERESA WHEATERSPOON
DIRECTOR OF PLAYER &
FRANCHISE DEVELOPMENT
4TH SEASON